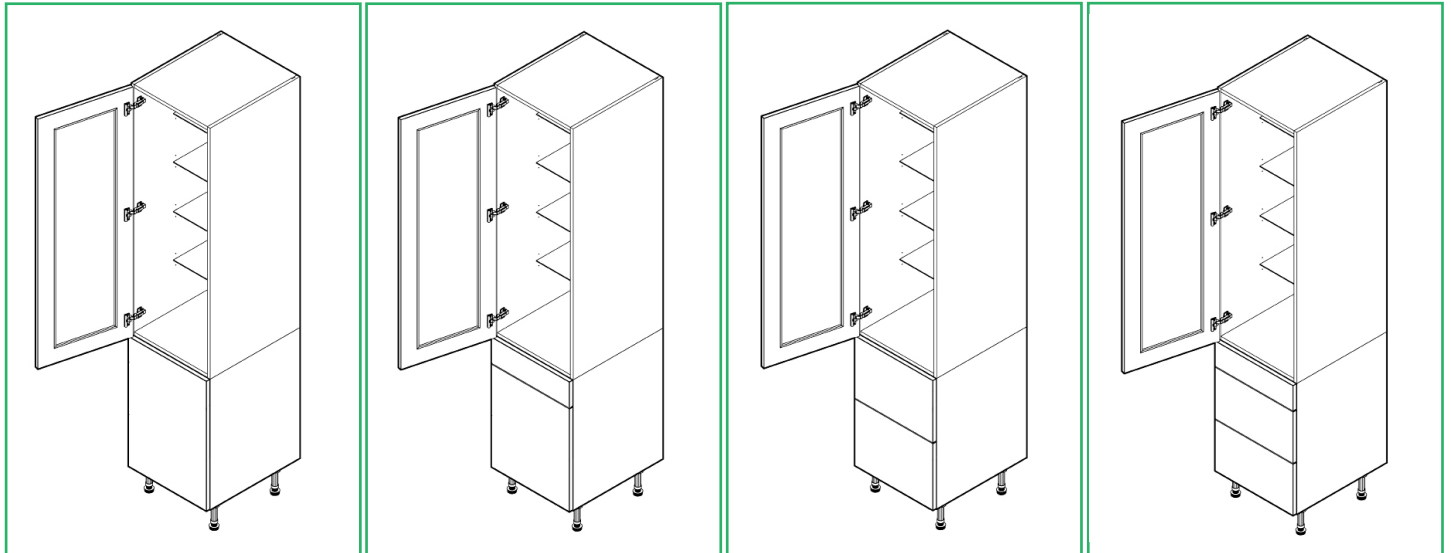


Tower Unit

Feature Combi Dresser Unit (1 Door, Solid Top) - Fitting Guide



Unit Parts



4x
15mm Screws



10x
30mm Screws



5x
Door Buffers

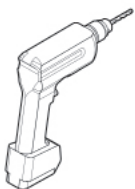


16x
Shelf Supports



18x
Cover Stickers

Tools Required



Drill



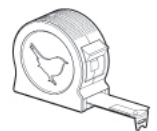
Screwdriver



Clamp



Spirit Level



Tape Measure

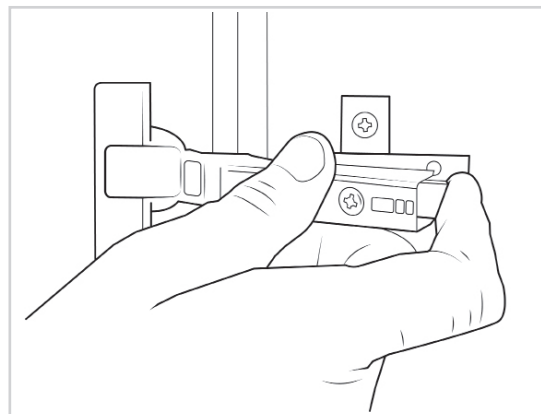
The base units should be installed before continuing with this guide.

Remember to take care when unpacking. Please keep your workspace clean, clear and tidy when working. This will help keep all items safe from any damage. Any un-needed cardboard or plastic should be flattened down and placed in the bin.

A minimum of two people will be needed to lift the unit.

Removing the frontal

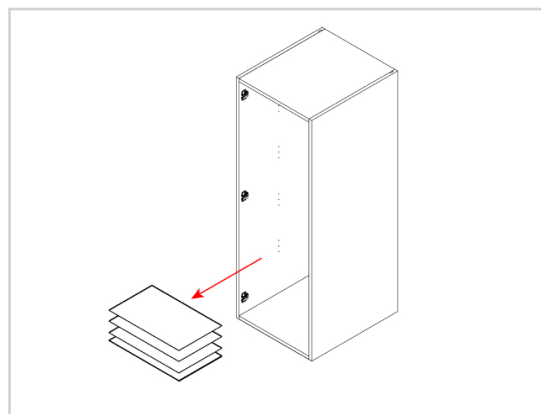
Before installing the unit, remove the frontal by pulling the release catch.



Removing the fittings

Remove all content so the unit is empty.

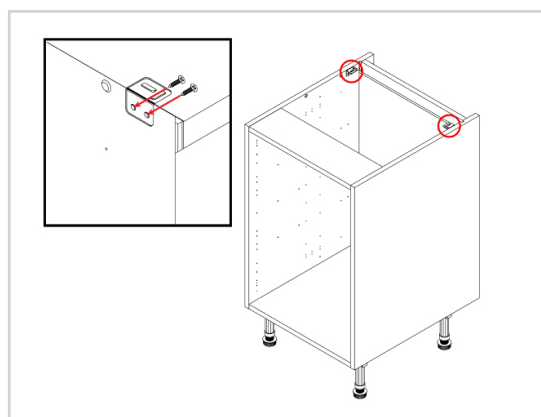
All fittings should be kept on a clean and level surface.



The door / drawer should be removed from the base unit to make installing easier.

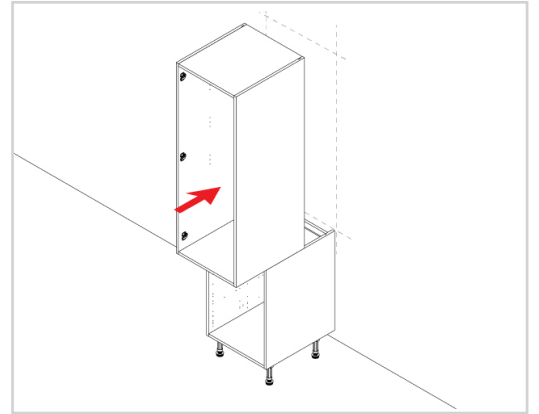
Securing the L-bracket

Fix the L-brackets to the back of the base unit with **2x15mm** screws per L-bracket, as shown in the image.



Lifting the unit into place

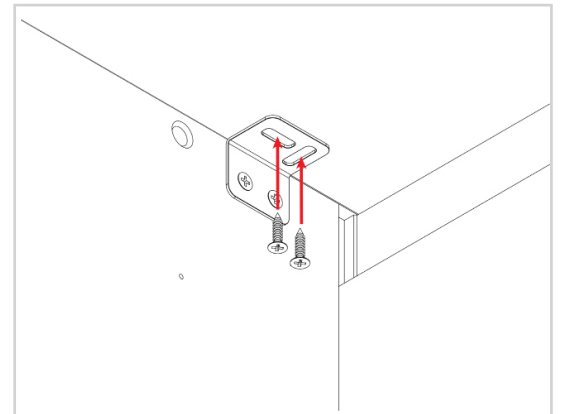
Lift the unit into place against the wall and align it with the wall markings that will have been drawn during the room preparation stage.



Make sure the front and side of the unit are flush and level with the base unit.

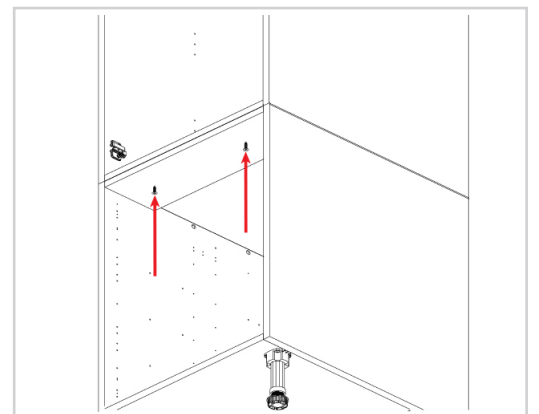
Securing the units together

Using **2x15mm** screws per L-bracket to fix the back of dresser unit to the base unit, as shown in the image.



Fixing to the front rail

Fix the front of the units together, by screwing upwards through the front rail of the base units using **2x30mm** screws on each side, as shown in the image.

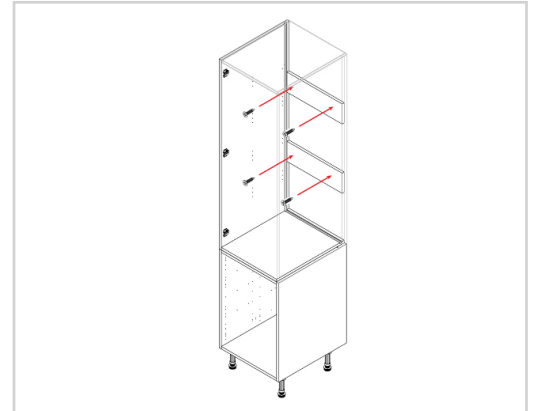


No screws or wall plugs are provided for attaching the unit to the wall.
This is due to variations in wall construction.

Before drilling into the wall, you **MUST** check for any hidden services or pipework within the walls.

Securing unit to the wall

Secure the unit by screwing through the back panel and support rails directly into the wall. Screws are not supplied.

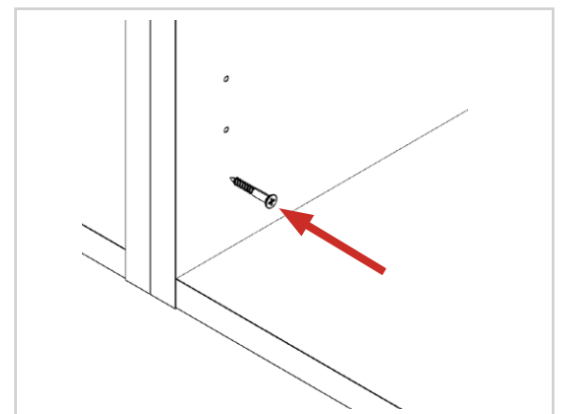


Securing to adjacent unit

Clamp together the two units, checking the front edges are level and flush.

Using the screws provided, **1x30mm** screw should be fixed into each corner of the carcass side.

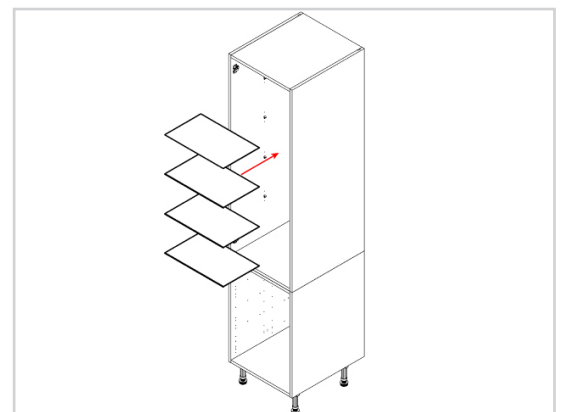
The screws can be concealed by placing them behind the shelf. The cover stickers can be used to hide any visible screw heads that remain.



Placing the shelf into position

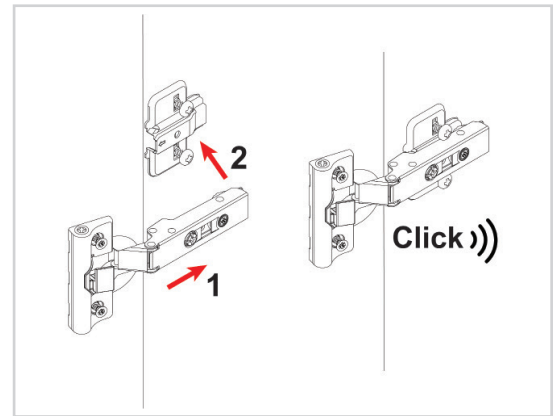
Position the shelf pegs into the pre-drilled holes. Place the shelves into position so the pin of the shelf peg is inserted into the pre-drilled holes.

The shelves will touch the back panel when installed, if there is a gap between the back panel and shelf then the shelf has been installed back to front and needs to be rotated.



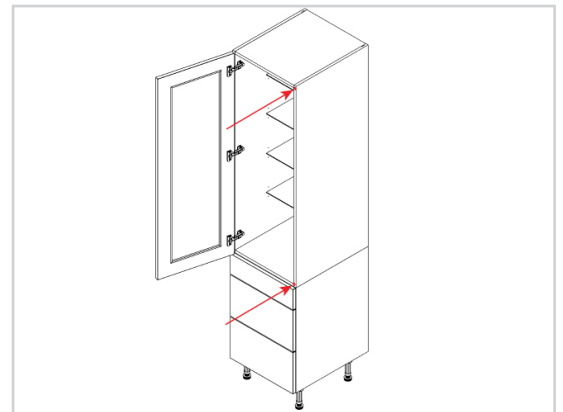
Attaching the frontal

The frontal should be re- attached to the unit by clipping the hinges onto the hinge plates. The bar of the hinge needs to be positioned into the hooks on the hinge plate. Then the rear of the hinge pushed to the hinge plate until it clicks.



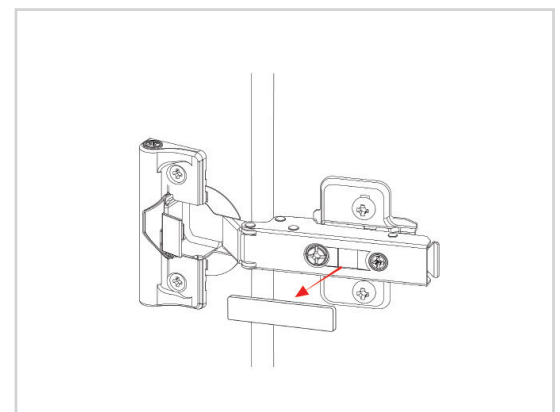
Adding the door buffers

Position **1x** door buffer at the top and bottom corners of the carcase, as illustrated in the image.



Removing the hinge cover cap

Use a flathead screwdriver to remove the hinge cover cap by inserting it into the slot of the cover cap and twisting.



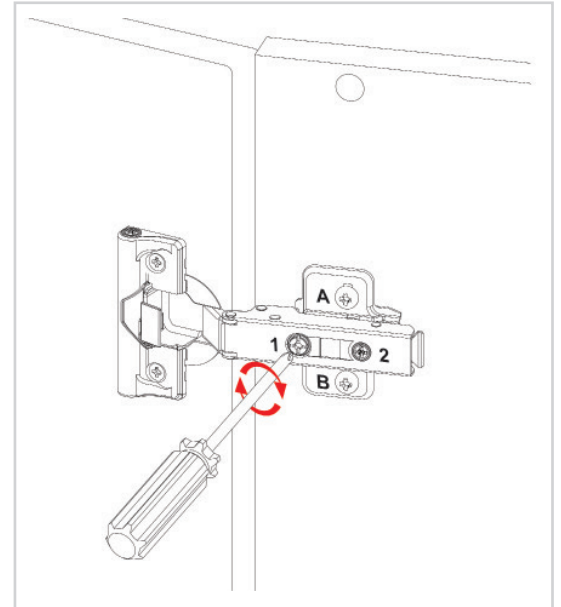
Adjusting the hinge

To adjust the hinges, use a screwdriver as required at points 1 and 2.

Point 1 - Will adjust the frontals left and right.

Point 2 - Will adjust the frontals in and out.

To move the hinges up or down, loosen the screws A and B. Manoeuvre the door, then re-tighten the screws.

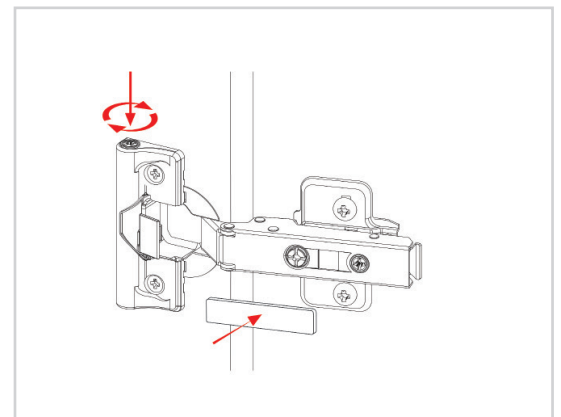


Altering the soft-close

Fit the hinge cover caps to the hinges by pressing down to secure.

Adjust the soft-close to suit (if required).

The soft-close is adjusted by turning the screw at the top of the hinge clockwise or anti-clockwise.



Cleaning the unit

Finally, the unit should be thoroughly cleaned to remove any debris that may have accumulated during the installation.

