

Directions & Parking

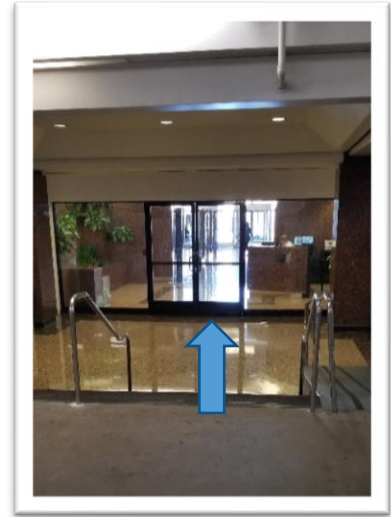
15910 Ventura Blvd. Suite 1605 | Encino, CA 91436 | 818.728.4500



Our office is on the 16th floor of the Encino Plaza building, make this turn onto Gloria Ave. to enter the parking structure.

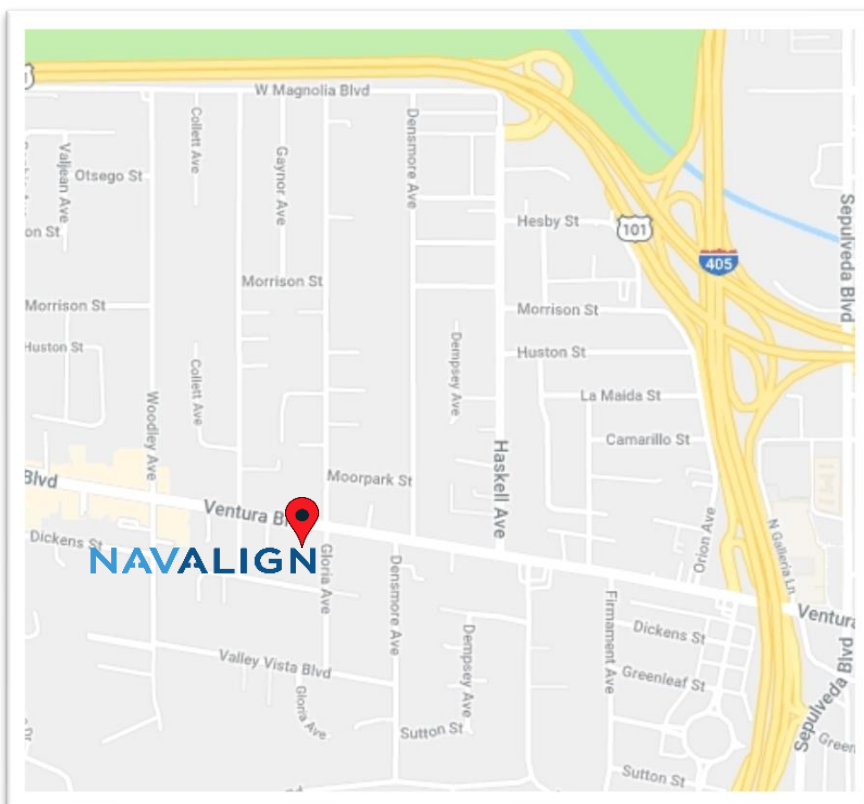


Parking entrance from Gloria Ave. Take a ticket and proceed straight to visitor parking. For handicap parking make an immediate right upon entering the parking structure.



From the parking structure follow the signs to enter the building lobby. An accessible ramp and handicap lift are available.

We validate parking, enter the parking structure from Gloria Ave. It's the first driveway on your right when traveling South from Ventura Blvd. Visitor parking is conveniently located on the first level, you may park on either the left or right side. Follow signs to the lobby and take any elevator to the 16th floor. Exit the elevator towards the hallway and turn left. We are in Suite 1605 at the end of the hallway.



From Calabasas / Westlake / Thousand Oaks

Travel East on US-101 South
Exit 19B for Haskell Ave.
Turn left onto Haskell Ave.
Turn right onto Ventura Blvd.
Turn left onto Gloria Ave.

From Burbank / Glendale / Pasadena

Travel West on CA-134 West
Merge onto US-101 North
Exit 19B for Haskell Ave.
Turn left onto Haskell Ave.
Turn right onto Ventura Blvd.
Turn left onto Gloria Ave.

From Beverly Hills / Santa Monica

Travel North on I-405 North
Exit 63A for Ventura Blvd.
Turn left onto Sepulveda Blvd.
Turn left onto Ventura Blvd.
Turn left onto Gloria Ave.