

# U.S. Department of the Interior Bureau of Indian Education

*INSPIRING THE NEXT  
GENERATION*

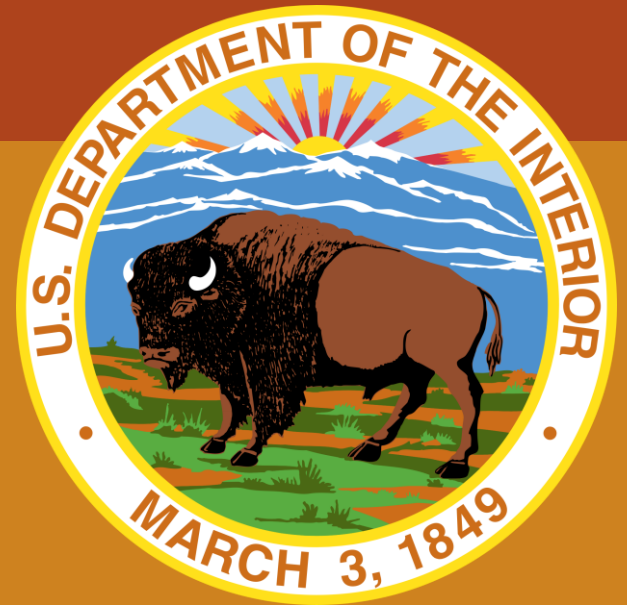
## BIE 2023 TIBC Mini-Session Update

Tony Dearman, Director, Bureau of Indian Education

Sharon Pinto, Deputy Director, Bureau of Indian Education

September 21, 2021

Online at: [bie.edu](http://bie.edu)



# Agenda

- BIE Organization updates
- Operating under COVID-19
- 2021 Highlights
- BIE Funding Trends
- 2022 Budget Priorities
- Strategic Direction



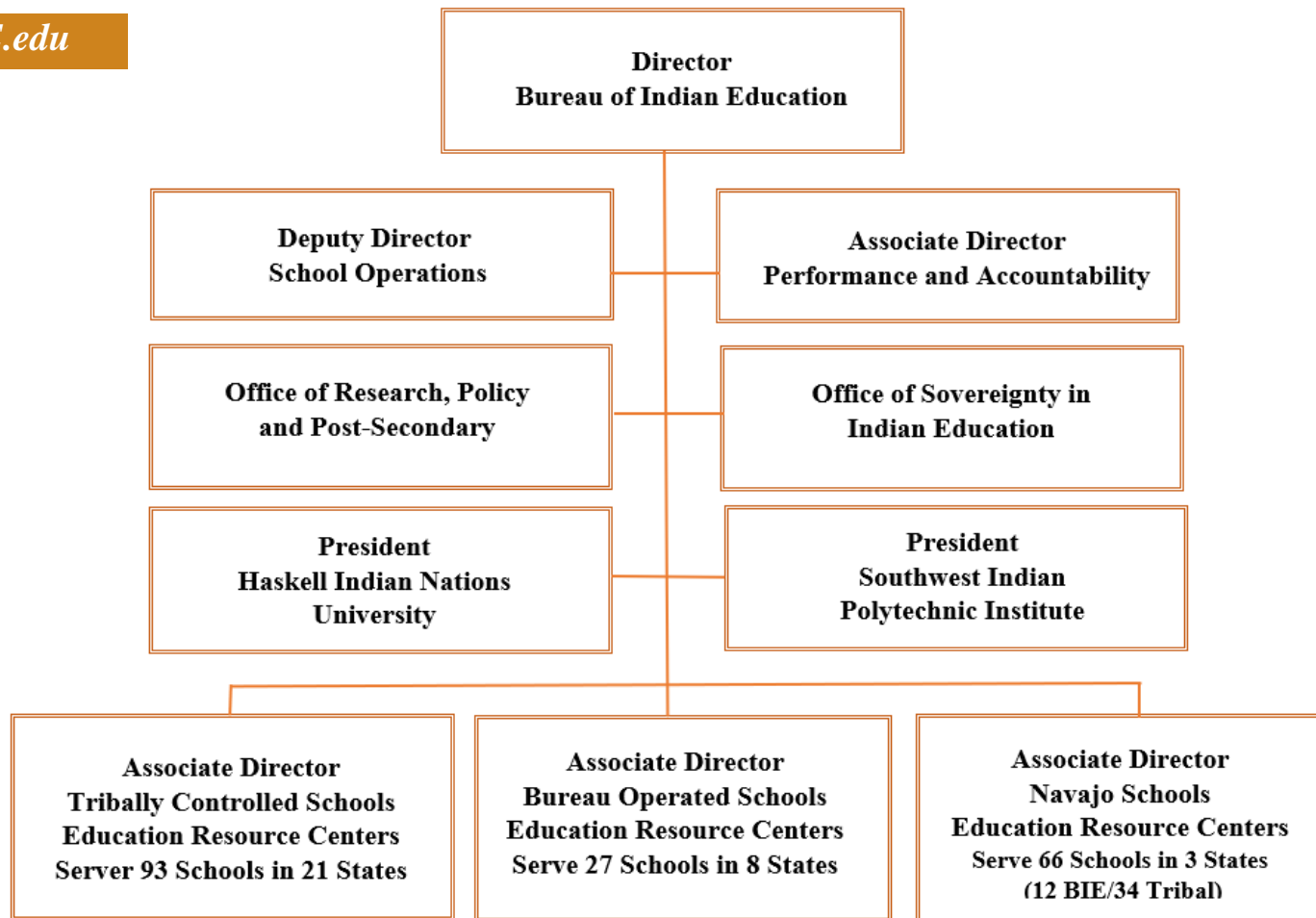
BIE

## Leadership Team

- Tony Dearman - Director
- Sharon Pinto - Deputy Bureau Director
- Clint J. Bowers - Chief of Staff
- Travis Clark - Chief Performance Officer
- Dr. Maureen Lesky - (Acting) Chief Academic Officer
- Margo DeLaune - (Acting) ADD DPA
- Hankie Ortiz - ADD Bureau Operated Schools
- Connie Albert– (Acting) ADD TCS
- Emily Arviso - (Acting) ADD Navajo Schools
- Dr. Tamarah Pfeiffer – (Acting) President, Haskell
- Monte Montieh – (Acting) President, SIPI

# Organization – Program Offices

*BIE.edu*



## Operating Under COVID-19

- **Delivering Emergency Resources** - to schools and TCUs directly impacted by the on-going pandemic.
- **Tribal Listening Sessions and Consultations** – to receive input and concerns, including American Rescue Plan Act needs and requests.
- **Continuing Support** – to promote sustaining and holding school harmless in supporting operational capabilities.

COVID Funding*				
CARES Act	ESF-1	ESF-12	American Rescue Plan	Total
\$69,000,000	\$153,750,000	\$409,400,000	\$850,000,000	\$1,482,150,000

*\*School and TCU allocations on BIE.edu*

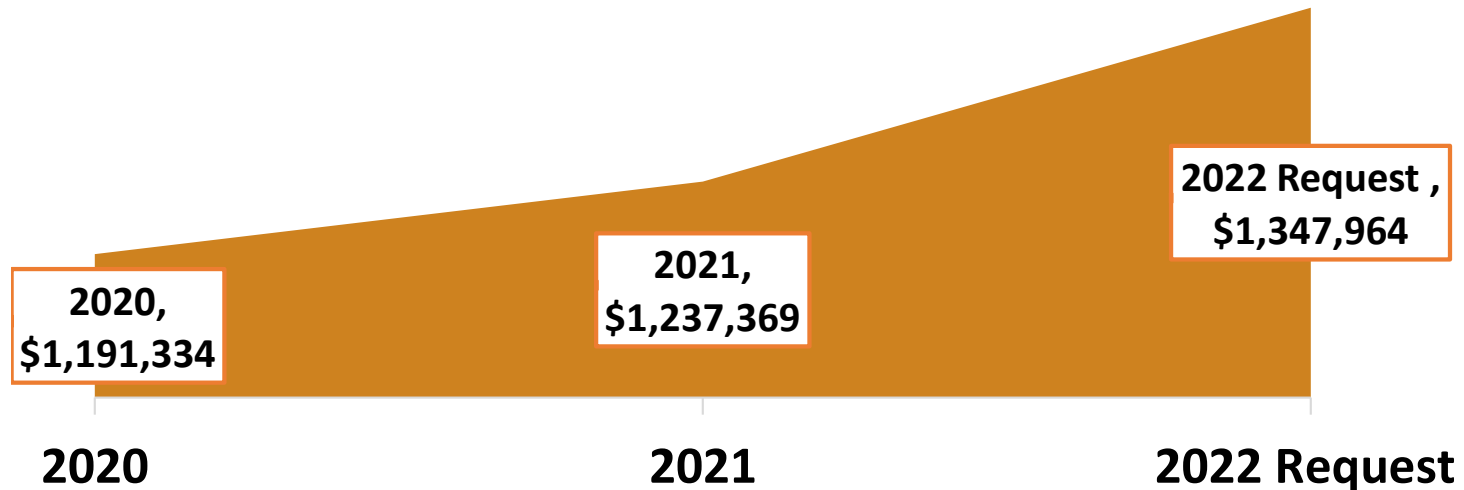
*\*Over 99% of FY 2021 Expiring COVID Funds Obligated*

## 2021 Highlights

- **Pivot to Remote and Distance Learning** - included IT assessments, supplemental resourcing support for IT needs, and start-up of Learning Management System initiative.
- **Blanket Waivers** - supporting educational and operational needs due to dynamic changes in school calendars and instructional.
- **Transition Priorities** – supporting new administration goals and new priorities.
- **Support Services and Education Construction** – hiring key positions to support grant-making, acquisition, and continuing BIE facility upgrades and improvements.

# BIE Funding Trends & Outlook

## Enacted Funding & 2022 Budget Request



Account	2020	2021	2022
Operation of Education Programs	\$943,077	\$973,092	\$1,083,634
Education Construction	<u>\$248,257</u>	<u>\$264,277</u>	<u>\$264,330</u>
<b>Total Bureau of Education</b>	<b>\$1,191,334</b>	<b>\$1,237,369</b>	<b>\$1,347,964</b>

## 2022 Request Budget Priorities

- **ISEP increase +\$49m to \$486m** to support school operations. 13% ISEP increase requested- WSU increase to nearly \$6,900.
- **Fixed costs of \$18.1m** to support teacher, school leader, and staff pay raises.
- **Tribal Grant Support Costs increase +\$8.0m to \$95m** to support Tribally Controlled School operating costs.
- **New Post-Secondary opportunities +\$10m** for Scholarships and Adult Education **+\$2.0 m** for R&D internships
- **Advancing technology +\$20m** for BIE Education Technology.



# 2022 Activities

*BIE.edu*

## Strategic Direction Activities

- Consultations and Listening Sessions
- Workforce planning
- Early Childhood Learning Awareness Training
- Operating Procedures to guide hiring activities
- Effectively using supplemental funding, including recruitment and retention Incentives

## Questions

Mvto HiyHiy LemLmts Wado  
Wawaenon DaWaEh Miigwech Wopila  
Quyana Pinagigi Wimblahaho  
Baasee AnaaBasee HiriweTudahe  
Ahéhee Pilamiya Taikuu  
ThankYou Nya:Weh Aho  
Tansi

BIE