



Qmotion<sup>®</sup>uk  
advanced shading systems

Automated Roller Blind

# The BEST solution to automation in window treatments

QMotion UK Advanced Shading Systems specialise in providing wire free window covering solutions for the home. Whereas traditional motorised window coverings require a qualified electrician to install 240v power wiring for the blind motor, the QMotion UK solution requires no wiring at all.

Now for the first time the user has the ability to install a fully functional quiet motorised roller system that provides a wire free system operated via remote control or by their smart phone or tablet using the QMotion app. The user can remotely operate their shades individually, by room, by elevation, by floor and all at the same time.

With unique inbuilt technology, the QMotion UK shade also provides a dual control feature that allows the user to operate the shade manually without the need for a remote control. By simply tugging the bottom bar you can lower the shade or send the shade back up to either its last pre-set position or to a fully raised position, bringing a new level of convenience to shade controls.

Power for the shade is provided by standard readily available alkaline D cell batteries. Due to the special counter balancing springs installed within the tube itself, the batteries provide up to 3 years operation based on 2 fully raise/lower operations per day.

## Easy Battery Replacement

By placing the access port for the readily available alkaline D cell batteries in the shade tube wall, you can now change the batteries without having to remove the shade from the brackets.

## Easy Fabric Removal and Installation

The spline that attaches the roller shade fabric to the tube permits the fabric to be easily removed for cleaning, maintaining and sanitising or replacement of the fabric altogether.



If you want to change your fabric for decorative reasons no problem your QMotion UK Reseller can order you a new QMotion UK fabric to use on your existing QMotion UK hardware providing unique longevity and return on investment from your QMotion UK window covering.

Please ask your QMotion UK Authorised Reseller to show you our full range of fabrics that are available for use with the system.



- Completely wireless motorisation - no exposed wires or RF antenna's
- Manual override (blind can be moved by hand without the need for a transmitter)
- Easy three minute set up after installation to provide upper and lower stop positions as well as automatically including three intermediate equal and aligned stop positions
- Powered by standard readily available D cell type batteries giving up to 3 years operation based on 2 cycles per day normal usage
- Batteries can be changed over easily by anyone as they are contained within the shade hardware itself
- Low Voltage wired shades available as an option complete with manual override
- QMotion UK shades come complete with a five year warranty

## Two Way Communication

- Wire Free ZigBee native with Control4 and Amazon® Echo Plus home automation systems whereby no interface is required.
- Wire Free ZigBee compatible with major home automation companies including Vantage, Savant, Crestron and RTI when you use the ZigBee Interface to integrate the blinds.
- Hardwired QiS with power and communication over Cat6/Rs485 cable via the QiS Power/Communication Panel.
- Wiring Adapter available for existing wiring infrastructures.



## QMotion UK Control Options

Along with the newest and most innovative control technology QMotion UK shades can interface with nearly all home automation systems either new or existing within your home. QMotion UK has developed the following accessories to make interfacing as easy as possible.

### Multi-Channel Remote

Up to 5 individual or group settings plus an "ALL" setting.

- Up to 4 custom presets
- LED feedback
- Motion activated channel



### Qrelay

Improves signal reception where factors effect remote transmission.

- Extends range of all QMotion UK remotes
- Powered from a wall outlet or from a powered USB port
- Two modes of operation



### Qsync

QMotion UK Smartphone Application "App" Features:

- Control QMotion UK shades with iOS and Android
- Virtual Shade: Drag your finger to place the shade to the desired positions
- Connects automatically to Wifi\* and Bridge. "Plug and Play"
- Channel System to name, take and set reference photo to group shades
- Step by Step setup for learning, setting lower limit, and deleting shades
- Control up to 100 shades and 8 groups from each Qsync TCP/IP to 433Mhz bridge\* (Automatic Wifi Connection not available on iOS)



### Remote Wall Station

For the convenience of the user, consider a Wall Docking Station.

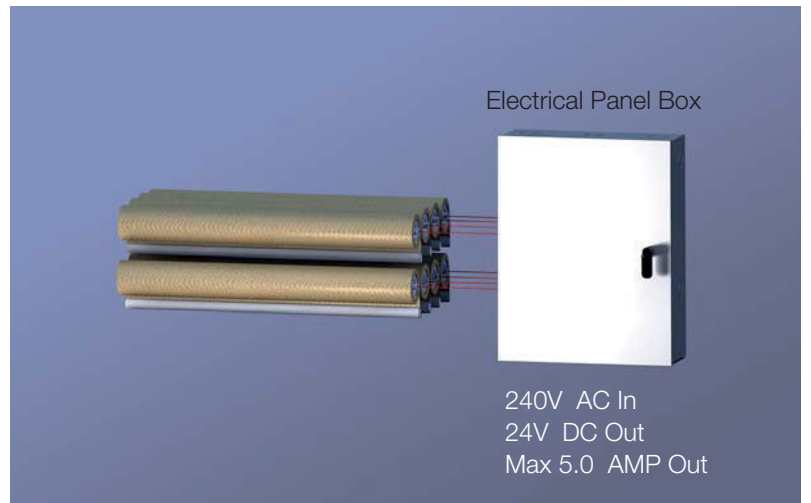
These wall plates are built to be installed on a wall and used as a place to retain transmitters. Remote controls hold in place on the docking station via a strong magnet. Wall plates are flush mounted and do not require routing a hole in drywall or other mounting wall finishes.



## Low Voltage Power Option

QMotion UK offers a low voltage power option

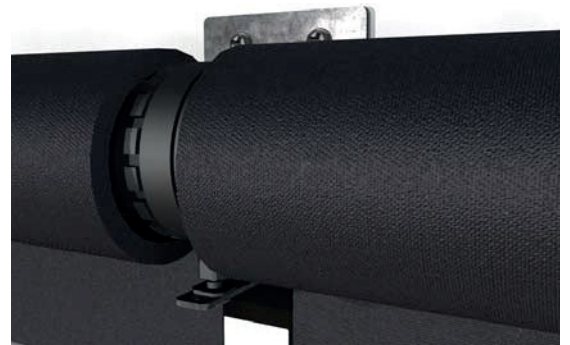
- Tube is configured to convert low voltage into the proper level to power the shade
- No need to purchase dedicated power supplies with various voltage levels
- Transformer has the option to be dinrail mounted in an electrical panel box or fixed alone. Power supply available for up to 8 shades
- Each shade comes with a 300mm wire lead
- Includes manual override system
- QMotion UK does not supply the cables from the transformer to the shades



Please note this requires a qualified electrician for installation of mains power supply for shade operation

## Linked shades - Qlink

- Another first is our wireless linked shade system
- Multi-window covering using one motor to drive multiple linked shades (size dependent)
- Manual override facility
- Unique linked shade system supports angles up to 40°



## QMotion UK Printed Shades

In addition to providing glare and heat control, QMotion UK shades are ideal to display logos, special announcements, window signage, and additional display areas.

- Promotional Signage
- Advertising
- Signs and banners
- Restaurants
- Showrooms
- Scenic designs
- Space dividers
- Exhibits



info@qmotionshades.co.uk    www.qmotionshades.co.uk