

Metallo 100

MET-100-N-PC
 MET-100-1TH-PC
 MET-100-3TH-PC



 **Polished Chrome washstand topped with a Lario 100 Solo basin**

- Option to order with or without faucet/tap holes
- Two legs with distinctive tee joint detailing
- Towel rail and rack for storage
- Wall anchors included

 **Waschbeckenständer in poliertem Chrom, mit dem Becken Lario 100 Solo**

- Mit oder ohne Armaturenlöcher erhältlich
- Zwei Beine mit charakteristischen Gelenken
- Handtuchhalter und Aufbewahrungsregal
- Inklusive Wandbefestigung

 **Lavabo chromé surmonté d'une vasque Lario 100 Solo**

- Possibilité de commander avec ou sans trou de robinetterie
- Deux pieds avec finition des jointures en T
- Porte-serviette et support pour le rangement
- Elements d'ancrage mural inclus

 **Palanganero en acabado cromado pulido con lavamanos Lario 100 Solo**

- Con posibilidad de solicitarlo con o sin orificios para la grifería
- Incluye dos patas con los clásicos detalles en las uniones
- Soporte toallero y balda para almacenaje
- Incluye los anclajes de pared

 **Lavabo in cromo lucido sormontato da un lavabo Lario 100 Solo**

- Opzione per ordinare con o senza rubinetto/fori per rubinetto
- Due gambe con dettagli di giunture eleganti
- Portasciugamante un ripiano
- Ancoraggi a muro inclusi

Metallo 100

MET-100-N-PC / MET-100-1TH-PC / MET-100-3TH-PC

Special Options/Sonderoptionen/Options spéciales/Opciones especiales/Opzioni speciali



Tap Holes

Bohrungen für Armaturen/Trou derobinetterie/
Agujerosparagifos/ Fori per rubinetti

Optiontoorder withor without pre-drilledtapholes
Mit oder ohneVorböhrungenfür Armaturen erhältlich
Option decommande: avecou sansrou derobinetterie
Disponblecon osin agujeros pretaladradospargifos
Possibilitãdi ordinaecon osenzafori per rubinetti



MET-100-N-PC

No tap holes
OhneBohrungen für Armaturen
Sanstrou derobinetterie
Sin agujerosparagifos
Senzafori per rubinetti



MET-100-1TH-PC

1 pre-drilledtaphole
Mit 1Vorböhrung für Armaturen
1Trou derobinetteriepré-percé
Con 1 agujero pretaladrado paragifos
1foroper rubinetti preforato



MET-100-3TH-PC

3 pre-drilledtapholes
Mit 3Vorböhrungen für Armaturen
3trousderobinetteriepré-percés
Con 3 agujeros pretaladradospargifos
3fori per rubinetti preforati

Recommended: K22/K24/K25/K122



Internal overflow
Trop-plein interne
Rebosadero integrado



K24



K25



K22



K122

Related collections



Florin tap - FLO-09



Staffordshire tap - STA-09

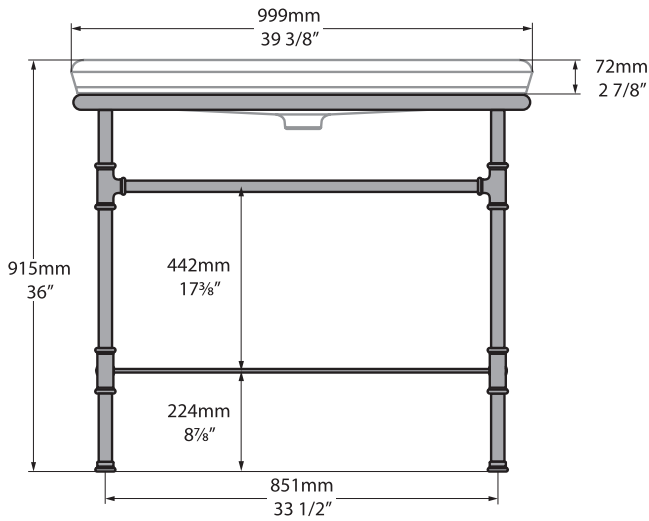


Just
BATHROOMWARE

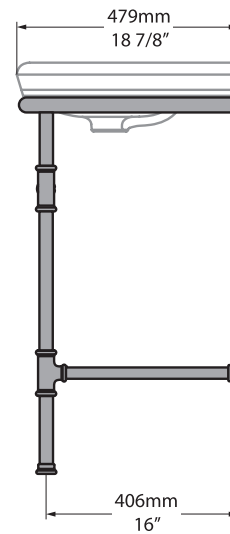
Metallo 100

MET-100-N-PC / MET-100-1TH-PC / MET-100-3TH-PC

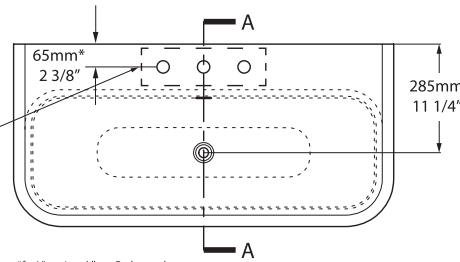
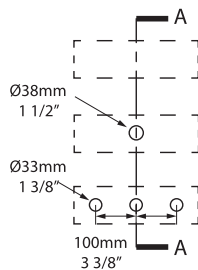
Front View



Side view



MET-100-N-PC
MET-100-1TH-PC
MET-100-3TH-PC

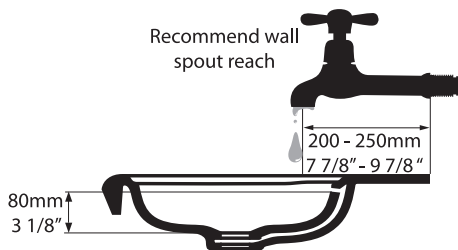


*for Victoria + Albert Baths products, check if fitting other products



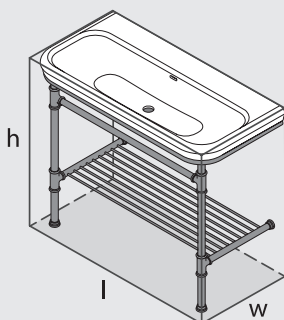
Tapholes can be drilled by installer
Armaturenlöcher können leicht vom Installateur gebohrt werden
Lestrousde robinetterie peuvent être percés par l'installateur
Pueden ser perforados por el instalador
I fori per rubinetti possono essere perforati dall'installatore

Section AA

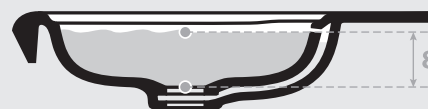


Just
BATHROOMWARE


*All measurements subject to +/-5% tolerance



l = 999mm / 39 3/8"
w = 479mm / 18 7/8"
h = 915mm / 36"



 48
 33

 15 ltr
 0 ltr



.dwg | .dxf | .skp www.vandabaths.com



Massachusetts Code: Approved
cUPC listing by IAPMO: File No. 6970



VA/1204/03/Jan19