



## DETAILED COMPENSATION PLAN OVERVIEW

### TABLE OF CONTENTS

#### 1. BECOMING A CUSTOMER OR BRAND PARTNER p.2

#### 2. COMMISSION STRUCTURE p.3

##### BONUSES

- p.3 Fast Start Bonuses
- p.3 Group Bonuses
- p.3 Personal Sales
- p.4 Uni-Level Overrides
- p.4 Infinity Overrides
- p.5 Monthly Commission Process

#### 3. BUSINESS VOLUME & LEADERSHIP LEVELS p.6

##### BUSINESS VOLUME CHART

##### LEADERSHIP POSITIONS and PROMOTION REQUIREMENTS

- |            |                       |                         |
|------------|-----------------------|-------------------------|
| 1. Ruby    | 4. Double Diamond     | 7. Black Diamond        |
| 2. Emerald | 5. Blue Diamond       | 8. Double Black Diamond |
| 3. Diamond | 6. Royal Blue Diamond | 9. Royal Black Diamond  |

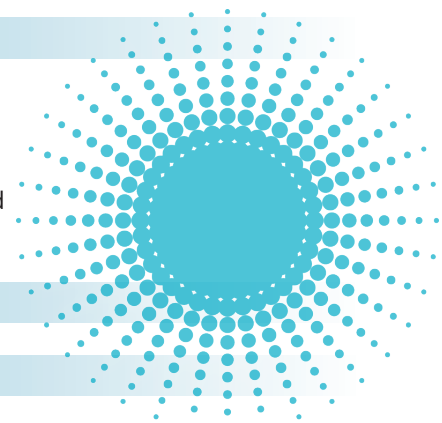
#### 4. PROMOTIONAL PROGRAMS p.7

#### 5. FIRST ORDER OPTIONS p.7

#### 6. PLACEMENT SPONSOR p.7

#### 7. CHARGEBACKS p.7

#### 8. CANCELLATION p.8



## 1. BECOMING A NEWYOU CUSTOMER and/or BRAND PARTNER

To become a NEWYOU Brand Partner, go to the website of the NEWYOU Brand Partner who introduced you to NEWYOU. All sites are [username.newyoupro.com](http://username.newyoupro.com). Click on the JOIN button and fill out the required information and check the "I have read and agree to the Privacy Policy, Brand Partner Agreement, Policies & Procedures and Refund Policy."

Once a Brand Partners application has been accepted, he or she will be considered a NEWYOU Brand Partner and will be eligible to earn commissions as outlined below.

Additionally, when the application has been accepted by NEWYOU, an online computer entry is made. This assigns the new Brand Partner a Personal Website, Back Office, and position in the Uni-Level structure of their upline sponsor.

### THE COMPENSATION PLAN

The New You Compensation Plan has multiple income opportunities including: Elite Bonuses, Fast-Start Bonuses, Monthly Residuals, Power Team Bonuses, Personal Sales, Uni-level Overrides, Infinity Bonuses and Commissions.

This generous compensation plan makes NEWYOU the most powerful and profitable opportunity within the industry.

The Compensation Plan is used to reward Brand Partners for their sales efforts on behalf of NEWYOU. NEWYOU offers individuals the opportunity to market NEWYOU products to others, and simply requires the potential NEWYOU Brand Partner to complete the online application and agreement to the company.

Commissions are earned from the sale of NEWYOU products by Brand Partners. Products are purchased by customers and optionally by Brand Partners.

Our customers are able to enjoy our products on a monthly autoship or may purchase the products as needed from their NEWYOU Brand Partner.

Our state-of-the-art products include:

- CBD DROPS**
- CB2 Oil**
- CB2 PLUS Oil**
- Caffe Canna**
- ENDO30 Weight Loss System**
- Release**
- Absorb**
- Sleep FX**
- Energy FX**

## 2. COMMISSION STRUCTURE

### BONUSES - PAID WEEKLY

#### a. Fast-Start Bonuses

A Fast-Start Bonus of **\$200** is triggered weekly when you sponsor a Brand Partner that purchases a **\$1000 Pro Pack**

A Fast-Start Bonus of **\$100** is triggered weekly when you sponsor a Brand Partner that purchases a **\$500 Business Pack**

A Fast-Start Bonus of **\$60** is triggered weekly when you sponsor a Brand Partner that purchases a **\$300 ENDO30 Pack**

A Fast-Start Bonus of **\$20** is triggered weekly when you sponsor a Brand Partner that purchases a **\$100 Essential Pack**

Enrollment fee is non-commissionable.

Each Sunday at 11:59pm (CT) that week is "closed". All Bonuses are calculated based on Starter Pack volume. Commission checks are sent Thursdays, eleven days after the close of business each Sunday.

#### b. Group Bonuses

New Brand Partners will be given 30 days from the day they purchase a NEWYOU Pack to qualify for a one-time...

**\$1,000 Elite Team Bonus** when your Team Bonus Volume reaches **\$3,000 Team Bonus Volume** in new business within 30 days of their purchase of one of the 6 Starter Pack options. Once a new Brand Partner earns a **\$1,000 Elite Team Bonus** or their 30 days expires, they can then participate in the other Team Bonuses.

**Existing Brand Partners** can qualify for a **\$400 Power TEAM Bonus** each and every time their Team Bonus Volume reaches **\$3,000 Team Bonus Volume** in new pack purchases in their entire organization in a 30-day period. (See *Team Bonus Qualifications to the right*)

#### c. Personal Sales

If a customer orders a product from the website without electing to go on auto ship, they will pay suggested retail pricing and the difference between that amount and wholesale brand partner cost will be paid to the upline active Brand Partner. If the customer decides to go on auto ship then they will pay wholesale cost for the product.

- All monthly checks must meet a minimum of \$20 (*accumulative*) before commissions are sent out to Brand Partners.
- Brand Partners can purchase NEWYOU products in their Back Office at [username.newyoupro.com](http://username.newyoupro.com)
- **You do not earn commissions on your own personal purchases.**

#### Team Bonus Qualifications:

- A Brand Partner can qualify for a Power Team Bonus when their Team Bonus Volume reaches \$3,000 in new business volume in a 30-day period.
- Team Bonus Volume is based on purchases of Pro, Business, ENDO30 and Essential Packs. Volume from these purchases remains in TBV until a Bonus is achieved or 30 days after which the volume drops off.
- The \$3,000 Team Bonus Volume must be from orders of Essential Packs, Business Packs and Pro Packs
- Each pack order has a 30 day "shelflife" and will either expire or will be used toward a Team Group Bonus.
- Brand Partners cannot use more than 45% of the \$3,000 from any leg. (If a leg has maxed out, any TBV from new business enrolled in that leg after it has reached its maximum and **before** the Brand Partner qualifies for a Power Team Bonus, will carry over to the next Team Bonus qualification.) **Example:** John Doe has a leg that has reached the 45% (\$1,350 maximum). That leg enrolls an additional \$1,300 BV of new business **before** John Doe's other legs qualify him for a Power Team Bonus. That \$1,300 BV will count for John Doe's next Power Team Bonus.
- Revenue from an account can only be used for a Brand Partner and their upline one time (everyone has the opportunity to use that TBV) in a Power Team Bonus. If your downline triggers a Power Team Bonus, it does not prevent you from using the same TBV.
- Emeralds, Diamonds and Double Diamonds can qualify for up to **4 Power Team Bonuses PER WEEK**. Blue Diamonds and above can qualify for up to **8 Power Team Bonuses PER WEEK**. (Any new business enrolled after a Brand Partner reaches the weekly cap and **before** the end of the business week **will not count** for future Power Team Bonuses.)
- When a Brand Partner has \$2,950 of Team BV and the next piece of new business in that leg is a Business Builders Pack, the total is then \$3,450. Only \$3,000 will count for the Brand Partner and the other \$450 will not carry over in the next qualification because it is part of a piece of business that made up the \$3,000.
- If a Team Bonus is paid out and then some of the TBV used for that Group Bonus is refunded, we will deduct the full amount of TBV from the next Power Team Bonus Qualification.

## 2. COMMISSION STRUCTURE ♦ CONTINUED

### d. Uni-Level Overrides

Brand Partners can earn up to **9 levels of overrides** in their organization based on their rank and qualifications.

NOTE: Group volume for rank advancement is calculated from levels 1-7 only.

Any TBV connected to an initial Pro Pack, Business Pack or Essential Pack will roll up at 75% to 3 levels at 5% in the Uni-level commissions payout starting at the level above the sponsor (earner of the fast-start bonus) of the Brand Partner who placed the order.

RANK	RUBY	EMERALD	DIAMOND	DOUBLE DIAMOND	BLUE DIAMOND	ROYAL BLUE DIAMOND	BLACK DIAMOND	DOUBLE BLACK DIAMOND	ROYAL BLACK DIAMOND
1	10%	10%	10%	10%	10%	10%	10%	10%	10%
2		5%	5%	5%	5%	5%	5%	5%	5%
3			5%	5%	5%	5%	5%	5%	5%
4				5%	5%	5%	5%	5%	5%
5					5%	5%	5%	5%	5%
6						5%	5%	5%	5%
7							5%	5%	5%
8								5%	5%
9									5%

Ruby Brand Partners earn commissions on their 1st level.

Emerald Brand Partners earn commissions on their 1st and 2nd levels.

Diamond Brand Partners earn commissions on their 1st through 3rd levels.

Double Diamonds earn commissions on their 1st through 4th levels.

Blue Diamonds earn commissions on their 1st through 5th levels.

Royal Blue Diamonds earn commissions on their 1st through 6th levels.

Black Diamonds earn commissions on their 1st through 7th levels.

Double Black Diamonds earn commissions on their 1st through 8th levels.

Royal Black Diamonds earn commissions on their 1st through 9th levels.

### e. Infinity Overrides

a. **1% Infinity Overrides** - As a **Black Diamond**, you earn an additional **1% Infinity Override** on active NEWYOU Customers and Brand Partners starting from your 10th level down through unlimited levels to the next Black Diamonds 10th level.

## 2. COMMISSION STRUCTURE ♦ CONTINUED

b. As a **Double Black Diamond**, you can earn an **additional 1% Infinity Override** on active NEWYOU Customers and Brand Partners starting from your 10th level down through unlimited levels to the next Double Black Diamonds 10th level.

c. **Royal Black Diamond** - will receive the following compensation on their monthly residual check: **1/4 % Infinity Override** on active NEWYOU Customers and Brand Partners starting from your 10th level down through your next downline Royal Black Diamond.

### 6. Monthly Commission Process

**Team Elite, Power Team and Fast Start Bonuses are paid weekly.** Once you earn one of these bonuses it is paid the 2nd week following the week you qualified.

All of these bonuses are paid based on the purchase price of each pack.

Personal Commissions, Overrides and Infinity Overrides will be paid on the 15th of the following month payment is received by NEWYOU. These commissions are based on the Bonus Volume (BV) assigned to each product.

All Brand Partners will have 30 days from their start date to complete the tax form details. In the event the tax form details is not completed, your commissions may be held. You will receive 100% of your commission once completed.

All monthly checks must meet a minimum of \$20 (*accumulative*) before being sent out.

You can choose **Credit WALLET** or **Direct Deposit in your Back Office**.

### 3. BUSINESS VOLUME & LEADERSHIP LEVELS

There are several leadership positions with NEWYOU. Once a new title has been achieved, the title is permanent but you **must maintain your Personal Volume (PV) and rank requirement in order to be qualified for overrides, bonuses and commissions at that level.**

Brand Partners who enroll with the purchase of a Business Pack (\$500 pack) will be promoted to and paid at the rank of Diamond for 180 days. Brand Partners who enroll with the purchase of a Pro Pack (\$1,000 pack) will be promoted to and paid at the rank of Double Diamond for 365 days. Both positions must still be personally active (minimum PV of 70 points) during this time period. These Brand Partners will also remain Ruby qualified when personally qualified (70 points) after their 180 or 365 days.

Brand Partners who have purchased a \$100 Essential or a \$500 Business Pack may purchase an upgrade pack, one time, within 30 days of their initial pack purchase in order to receive rank advancement benefits associated with the new pack as described above.

You can purchase an upgraded pack after 30-days but there are no rank advancements for the purchaser or fast-start bonuses paid to the upline.

Any upgrade pack purchase does not re-start the time clock for the Elite Bonus qualification.

#### **Ruby Brand Partner**

- a) Be an active Brand Partner (active means 70 personal business volume (PV) each month.
- b) Have 2 active frontline Brand Partners. If you enroll with an Essential, Business or Pro Pack, you will be qualified to be paid as a Ruby Brand Partner as long as you are personally qualified.

#### **Emerald Brand Partner**

- a) 70 Personal Business Volume each month
- b) 3,000 monthly in Group Business Volume (60% max per leg)
- c) Have 2 Active Frontline Brand Partners

#### **Diamond Brand Partner**

- a) 70 Personal Business Volume each month
- b) 12,000 monthly in Group Business Volume (60% max per leg)
- c) Have 3 active frontline Brand Partners

#### **Double Diamond Brand Partner**

- a) 70 Personal Business Volume each month
- b) 25,000 monthly in Group Business Volume (60% max per leg)
- c) Have 4 active front line Brand Partners

#### **Blue Diamond Brand Partner**

- a) 70 Personal Business Volume each month
- b) 40,000 monthly in Group Business Volume (60% max per leg)
- c) Have 5 active frontline Brand Partners

#### **Royal Blue Diamond Brand Partner**

- a) 70 Personal Business Volume each month
- b) 80,000 monthly in Group Business Volume (60% max per leg)
- c) Have 6 active frontline Brand Partners

#### **Black Diamond Brand Partner**

- a) 70 Personal Business Volume each month
- b) 150,000 monthly in Group Business Volume (60% max per leg)
- c) Have 7 active frontline Brand Partners

#### **Double Black Diamond**

- a) 70 Personal Business Volume
- b) Must have 8 active frontline Brand Partners of which 3 legs must have at least one active Qualified Black Diamond.

#### **Royal Black Diamond**

- a) 70 personal business volume
- b) A qualified Royal Black Diamond must have 9 active front line Brand Partners of which 6 legs must have at least one Qualified Black Diamond

NOTE: Group Volume (GV) is all volume generated within your first seven levels.

## 4. PROMOTIONAL PROGRAMS

### GET 4 and GET FREE DROPS!

In any given calendar month, a Brand Partner qualifies by having 4 or more active NEWYOU Customers with one or more products on a recurring order. The following month the Brand Partner will receive a check in the amount of \$70 and two FREE bottles of DROPS.

## 5. FIRST ORDER OPTIONS

When you join NEWYOU as a Brand Partner you can choose any of the NEWYOU starter pack options:

- a. Pro Pack - \$1000.00 (Best)
- b. Business Pack - \$500 (Better)
- c. ENDO30 Pack - \$300 (Good)
- d. Essential Pack - \$100 (Good)

## 6. PLACEMENT SPONSOR

A Brand Partner may sponsor a new person and have 30 days in which to place that person, if they elect to do so, under any other personally sponsored Brand Partner on their 1ST LEVEL ONLY. If they are not placed within the 30-day period they will remain permanently on the sponsors 1st level.

## 7. CHARGE-BACKS

When a bank forcibly reverses a credit card transaction, returning funds to the cardholder, it is known as a chargeback. When NEWYOU receives notice of a chargeback, the account in which the service was purchased is immediately blocked, and all related services in the account are suspended. In the interest of caution, NEWYOU considers charge-

## 7. CHARGE-BACKS ♦ CONTINUED

backs to be the result of fraud and will suspend the account until the issue is resolved.

When a Brand Partner receives a commission on any NEWYOU product, they are subject to a claw back of any “un-earned” commissions if the membership receives a refund at Company’s discretion. Chargeback’s will be deducted from any future commission checks until chargeback’s are relieved. Bonuses received by Brand Partners are subject to a 100% clawback due to fraudulent business or unethical activity.

## 8. CANCELLATION

An annual renewal fee of \$39.95 is due on the anniversary date of acceptance of the Brand Partner Agreement. There is no BV and Commission paid on the \$39.95 Fee.

If the Brand Partner is drafted to pay the recurring \$39.95 annual fee (if required) and the draft fails, the Brand Partner will be suspended until payment is made. When a Brand Partner cancels, commissions will no longer be paid to that Brand Partner.

**Any Brand Partner may cancel in writing (U.S. Mail or email) within 3 days of the date of enrollment or the date the Brand Partner Application and Agreement is received at NEWYOU and will receive a full refund.**

### EXAMPLES:

#### Team Bonuses and Rank Logic Notes

Team Bonuses are based on TBV

If you qualify for a Rank in month 1, you move into month 2 with that Rank and bonuses are paid at that Rank unless you earn a rank advancement during month 2, then you are paid at the new, higher rank for the balance of month 2. You can promote mid-month and earn Team Bonuses only.

Example:

- *Month 1 you are Double Diamond.*
- *You enter month 2 as Double Diamond (weekly Team Bonus max of 4/week)*  
*10 days into Month 2 you earn the Rank of Blue Diamond:*
  - *Weekly Team bonus max is now 8/week for the rest of month 2*
- *Entering month 3 you will be a Blue Diamond with a Team Bonus cap of 8*  
*Alternately, if by the end of Month 2 you remain at the Double Diamond level you'll enter month 3 as a Double Diamond with a max Team Bonus of 4/week.*

All Orders have a Shelf Life of 30 days commission eligibility.



## 8. CANCELLATION ✦ CONTINUED

If the Elite Bonus is not achieved in the first 30 days after the purchase of your first Pack, any TBV created (exclusive of “expired” orders) will carry forward towards a Team Bonus. (Each pack order has a 30 Day Shelf Life.)

### EXAMPLES:

#### Team/Elite Bonus Qualifications:

A Consultant can qualify for a Team Bonus when their Team Bonus Volume (TBV) reaches 3,000 in new business volume within a 30 day period.

Team Bonus Volume counts for the upline at the time of Pack Purchase by the new Brand Partner. If the Brand Partner purchases a 2nd pack within 30 days, it will also count towards the Team Bonus Volume. The 2nd pack must be a new pack. All Brand Partners have a onetime option to upgrade and purchase a 2nd pack greater than their original pack, within 30 days.

The 3,000 Team Bonus Volume must be from pack orders of Essential, Business and Pro Packs.

Each pack order has a 30 day “shelf life” and will either expire or will be used toward a Team Bonus.

Brand Partners cannot use more than \$1350 (45%) from any one leg.

If a leg has maxed out (\$1350), any TBV from new business enrolled in that leg after it has reached its maximum and before the Brand Partner qualifies for a Team Bonus, will carry over to the next Team Bonus qualification.

Example:

***John Doe has a leg that has reached the 45% maximum. That leg enrolls an additional 1,500 BV of new business before John Doe's other legs qualify him for a Team Bonus. Only 1,350 of that volume will count for John Doe's next Team Bonus.***

Revenue from an account can only be used for a Brand Partner and their upline one time (everyone has the opportunity to use that TBV) in a Team Bonus.

If your downline triggers a Team Bonus, it does not prevent you from using the same TBV.

## 8. CANCELLATION ✦ CONTINUED

Blue Diamond and above Brand Partners can qualify for up to 8 Team Bonuses PER WEEK. (Any new business enrolled after a Brand Partner reaches the weekly cap, max number of bonuses, and before the end of the business week will not count for future Team Bonuses.)

Example:

*When a Brand Partner has 2,950 of Team BV and the next piece of new business in that leg is a Business Pack, the total is then 3,450. Only 3,000 will count for the Brand Partners and the other 450 will not carry over in the next qualification because it is part of a piece of business that made up the 3,000. Any other pack volume for that week will not carry over once the Brand Partner has earned 8 Team Bonuses.*

If a Team Bonus is paid out and then some of the TBV used for that Team Bonus is refunded, we will deduct the full amount of TBV from the next Team Bonus Qualification.

Every Sunday at 11:59pm PT, we will calculate all Team Bonuses earned for the week. Payment of Team Bonuses will pay on the weekly commission run after the close of the business week the week following the week the Team Bonus was earned.

All Pack Orders have a Shelf Life of 30 days commission eligibility.

If the Elite Bonus is not achieved in the first 30 days, any TBV created (exclusive of “expired” orders) will carry forward towards a Team Bonus.