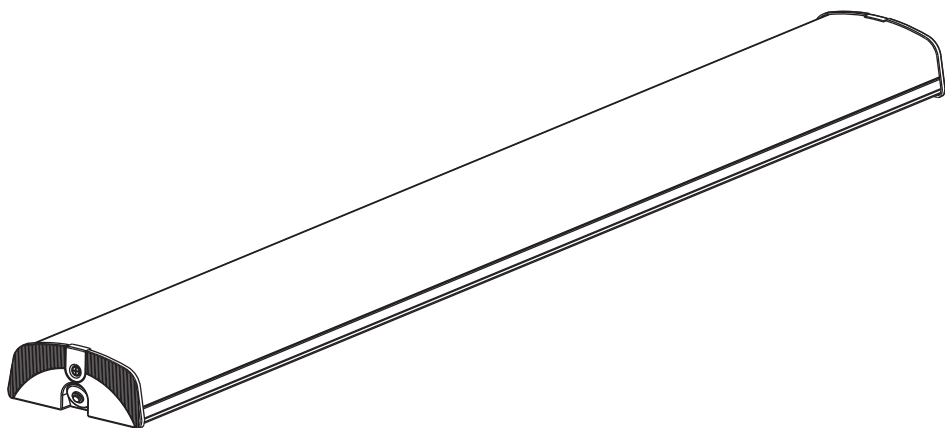


OPERATING INSTRUCTION

LED BATTEN LIGHTING

norikon as
www.norikon.no



NORIKON N855 LED

IP44

CE

RoHS
2011/65/EU

APPLICATION

- Industries
- Workshop
- Warehouse
- Corridor
- Indoor area
- Car parking

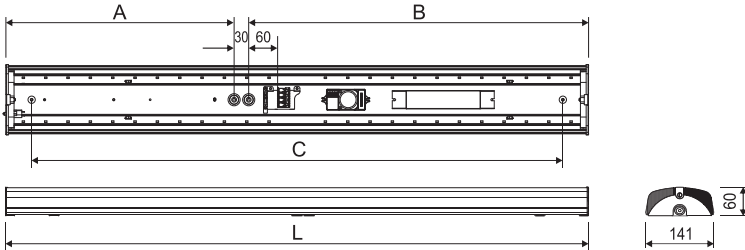
MAIN TECHNICAL DATA

Input: AC 220-240V 50/60Hz

Light source: LED SMD2835

Working temperature:

-25°C---+50°C



TECHNICAL INFORMATION

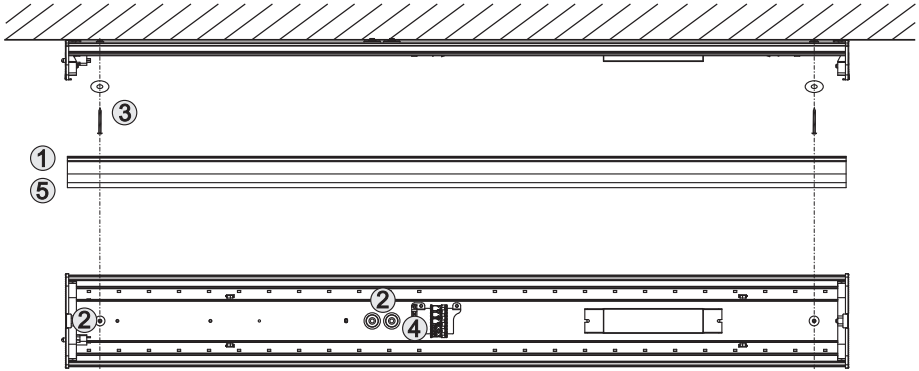
Code	Input Voltage	LED Type	Input Power	Lumen	CCT	L(mm)	A(mm)	B(mm)	C(mm)	NW(kg)
3304104	220-240V ~ 50/60Hz	SMD2835	21 W	2100 Lm	3000K	600	315	255	534	1.4
3304105	220-240V ~ 50/60Hz	SMD2835	21 W	2100 Lm	4000K	600	315	255	534	1.4
3304110	220-240V ~ 50/60Hz	SMD2835	40 W	4200 Lm	3000K	1200	700	470	1094	2.4
3304111	220-240V ~ 50/60Hz	SMD2835	40 W	4200 Lm	4000K	1200	700	470	1094	2.4
3304116	220-240V ~ 50/60Hz	SMD2835	57 W	6000 Lm	3000K	1500	850	620	1094	2.8
3304117	220-240V ~ 50/60Hz	SMD2835	57 W	6000 Lm	4000K	1500	850	620	1094	2.8

Parameter tolerance: ±10%

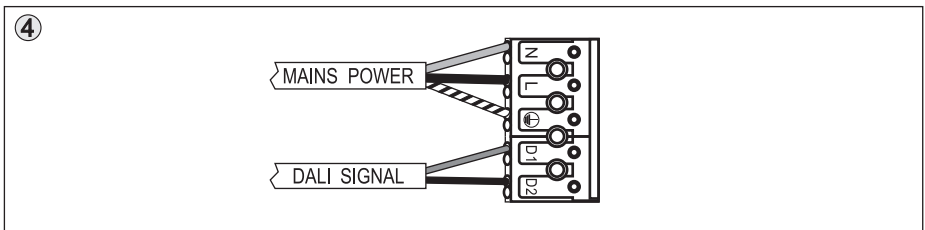
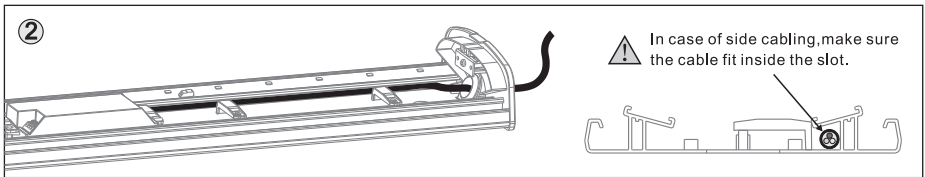
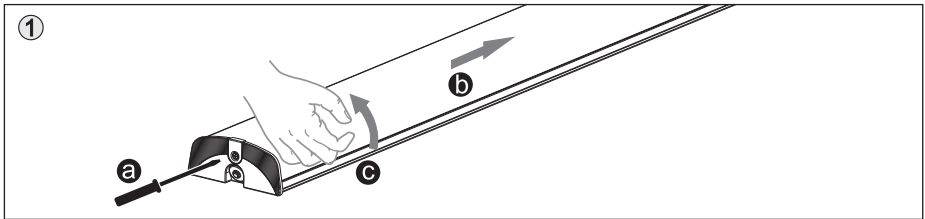
CAUTION

1. The product must be installed by professional technicians and power supply must be cut off before installation.
2. The installation wiring must be 3x 1.0-2.5mm² and wired in accordance with the latest IEE electrical regulations or the national requirements,(Recommend type of cable is H03VV-F)
3. Don't touch LED while installing or maintaining.
4. The light source of this luminaire is not replaceable,when the light source reaches its end of life the whole luminaire shall be replaced.

MOUNTING

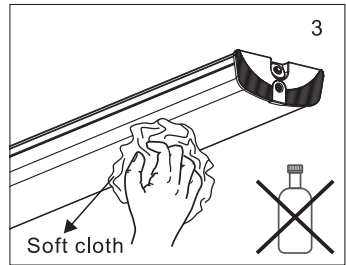
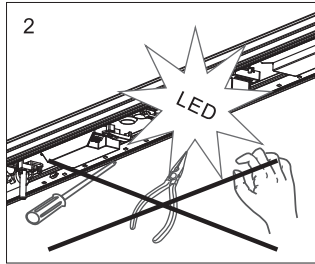
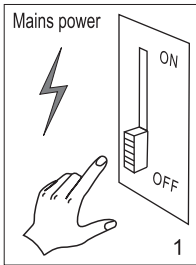


1. Open the diffuser.
2. Pull in the power cord through the gasket.
3. Fix the base on the surface with screws.
4. Connect the power cord on the terminal correctly.
(Caution:Earth cable must be connected firmly.)
5. Assemble the diffuser.



MAINTENANCE

1. Cut off the mains power first.
2. Don't touch LED while maintaining or cleaning.
3. Don't use chemical reagent to clean lamp.



Environmental protection: Waste electrical products should not be disposed of with household waste. Please recycle where facilities exist. Check with your local authority or retailer for recycling advice.

