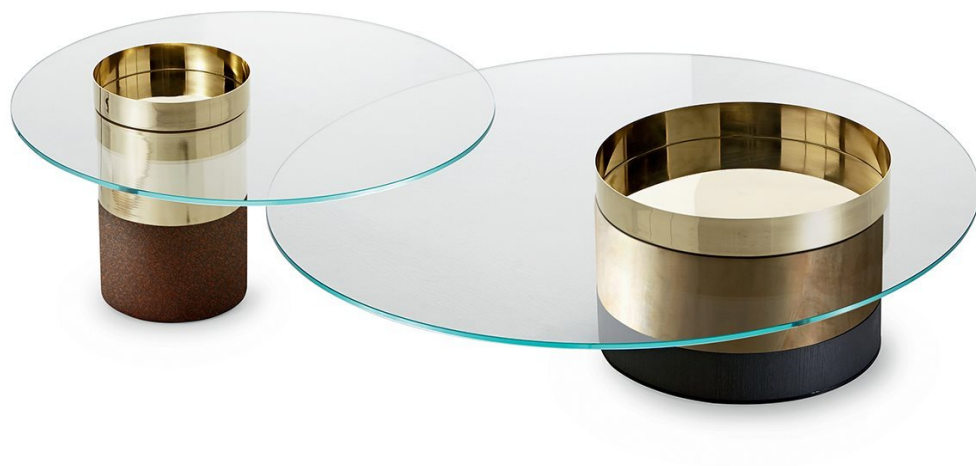


---

# Haumea

---

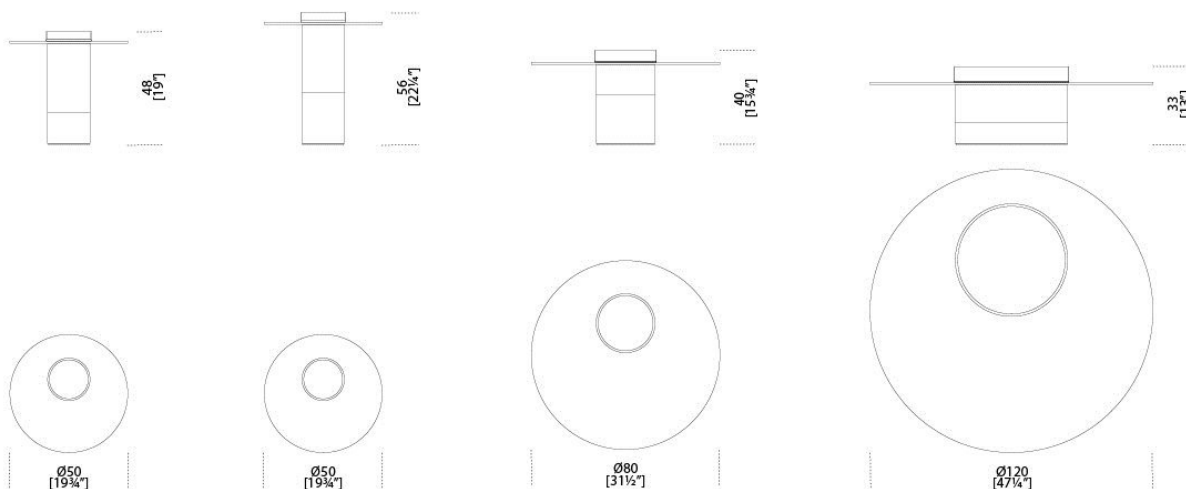
*Massimo Castagna*  
2015



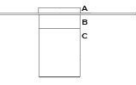
Tavolino con piano in cristallo temperato extralight 10mm. Su richiesta piano in cristallo temperato "Grigio Italia" 10mm. Base in frassino tinto nero poro aperto, bianco poro aperto o laccato ruggine. Cilindro centrale in metallo ottonato lucido, brunito a mano, ramato, cromato nero, laccato bianco o nichelato lucido. Ciotola disponibile in ottone lucido, ottone cromato nero, ottone nichelato lucido o ottone laccato bianco.

Coffee table with 10mm extralight tempered glass top. 10 mm tempered smoke "Grigio Italia" glass, on request. Black or white open pore stained ash or rust lacquered wooden base. Central cylinder in bright brass-plated, hand-burnished, copper-plated, black chromed, white lacquered or bright nickel-plated metal. Bowl available in bright brass, black chromed brass, bright nickel-plated brass or white lacquered brass.

Dimensioni / Sizes  
 Cm (Ø x H)  
 XS 50 x 48  
 S 50 x 56  
 M 80 x 40  
 L 120 x 33





	A	B	C
	<b>COMB. 1</b> Ottone lucido Bright brass	<b>COMB. 1</b> Ottone brunito Burnished brass	<b>COMB. 1</b> Frassino tinto nero poro aperto Black open pore stained ash
	<b>COMB. 2</b> Ottone lucido Bright brass	<b>COMB. 2</b> Ottone lucido Bright brass	<b>COMB. 2</b> Ruggine Rust
	<b>COMB. 3</b> Ottone cromato nero Black chromed brass	<b>COMB. 3</b> Ottone cromato nero Black chromed brass	<b>COMB. 3</b> Frassino tinto nero poro aperto Black open pore stained ash
	<b>COMB. 4</b> Ottone cromato nero Black chromed brass	<b>COMB. 4</b> Ottone ramato Coppered brass	<b>COMB. 4</b> Ruggine Rust
	<b>COMB. 5</b> Ottone cromato nero Black chromed brass	<b>COMB. 5</b> Ottone brunito Burnished brass	<b>COMB. 5</b> Ruggine Rust
	<b>COMB. 6</b> Ottone cromato nero Black chromed brass	<b>COMB. 6</b> Ottone brunito Burnished brass	<b>COMB. 6</b> Frassino tinto nero poro aperto Black open pore stained ash
	<b>COMB. 7</b> Ottone nichelato lucido Bright nickel-plated brass	<b>COMB. 7</b> Metallo nichelato lucido Bright nickel-plated metal	<b>COMB. 7</b> Bianco poro aperto White open pore
	<b>COMB. 8</b> Ottone laccato bianco opaco Mat white lacquered brass	<b>COMB. 8</b> Metallo laccato bianco lucido Glossy white lacquered metal	<b>COMB. 8</b> Bianco poro aperto White open pore

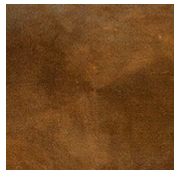
### *Metallo / Metal*



*Cromo nero*  
*Black chrome*



*Ottone lucido*  
*Bright brass*



*Ottone brunito  
a mano*  
*Hand  
burnished  
brass*



*Ottone ramato*  
*Coppered brass*

---

### *Legno / Wood*



*Bianco poro  
aperto*  
*White open  
pore*



*Nero poro  
aperto*  
*Black open pore*



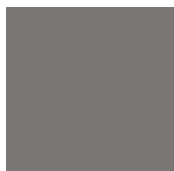
*Ruggine*  
*Rust*

---

### *Cristallo / Glass*



*Extralight*  
*Extralight*



*"Grigio Italia"*  
*"Grigio Italia"*

---