



The Premium Pocket Door Solution



Distributed by



Pocket Frame Systems

The CS Cavity Slider™ is a practical solution for those areas where there is not enough space for a swinging door.

In addition to its space saving attributes in restrooms, hallways, and laundries, it can be used with confidence for architectural feature openings around your project.

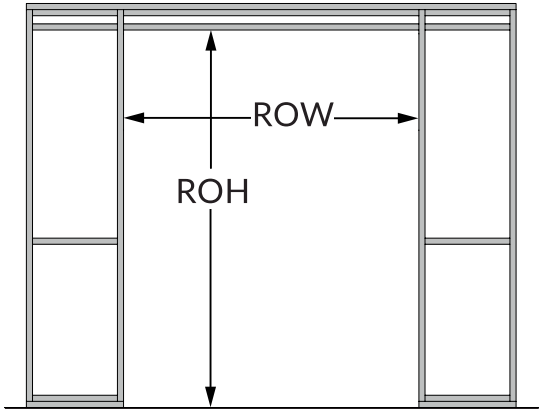
Features

- Structurally robust due to its construction from aluminum extrusions
- Easy to assemble and install
- Available for both 2x4 and 2x6 framing
- Can be cut down to size on site
- Suitable for residential and commercial projects (meets Type 1 construction code without any combustible materials)

Rough Opening

DH - Door Height DW - Door Width

Dimension	Inches
RO Height	DH + 4-1/4"
RO Width Single	(DW x 2) + 2"
RO Width Bi-Parting	(DW x 4) + 2"



How to Order

1. Choose Framing and Door Size

Frames can be cut down on site to maximize size for each model:

Framing	Door Size	Novo CSD	CS SKU
4" Framing (2x4 Stud)	2'0" x 6'8"	1061037	CSS4K2068
	2'6" x 6'8"	1061038	CSS4K2668
	2'8" x 6'8"	1061039	CSS4K2868
	3'0" x 6'8"	1061040	CSS4K3068
	2'6" x 8'0"	1061041	CSS4K2680
	2'8" x 8'0"	1061042	CSS4K2880
	3'0" x 8'0"	1061043	CSS4K3080
	4'0" x 8'0"	1061044	CSS4K4080
6" Framing (2x6 Stud)	2'6" x 8'0"	1061029	CSU6K2680
	3'0" x 8'0"	1061030	CSU6K3080
	4'0" x 8'0"	1061031	CSU6K4080
	3'0" x 9'0"	1061032	CSU6K3090
	4'0" x 9'0"	1061033	CSU6K4090
	3'0" x 10'0"	1061034	CSU6K30100
	4'0" x 10'0"	1061035	CSU6K40100
	5'0" x 10'0"	1061036	CSU6K50100

2. Choose a Carriage Pack (one per door)

Includes: Carriages, mounting plates, T-Guide, fixing screws, and adjusting wrench

Carriage Pack Type	Novo CSD	CS SKU
Standard M6 (200lb/90kg)	1061021	DKM0611
Standard M8 (M8 (500lb/240kg)	1061022	DKM0811
CS SofStop Single Action Door Weight: 0-200 lb (90kg) Min Door Width No Stop: 23" (584mm) Min Door Width 1 Stop: 26" (660mm)	1061023	DKS0511
CS SofStop Twin Action Door Weight: 0-200 lb (90kg) Min Door Width No Stop: 23" (584mm) Min Door Width 1 Stop: 26" (660mm)	1061024	DKS0711
CS SofStop HD Twin Action Door Weight: 0-350 lb (160kg) Min Door Width No Stop: 26" (660mm) Min Door Width 1 Stop: 29" (737mm)	1061025	DKS0811

CS Cavity Slider™ Features



Smooth running carriages
with encased ball bearings.
Up to 500lb (240kg) capacity

SofStop Soft Close/Soft Open
also available



Corner joining brackets
ensure precise right angled assembly



T-joining brackets
for easy assembly of
slats to split jambs &
back stud

Horizontal slats
for added strength

Strong aluminum frame
complies with Type 1 Construction

Split Jambs and slats
use hollow core technology for superior rigidity

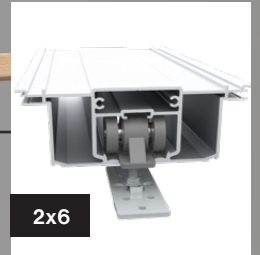
Door Thickness

1-3/8" to 1-3/4"
2x4 Stud

1-3/8" to 2-1/4"
2x6 Stud



2x4



2x6

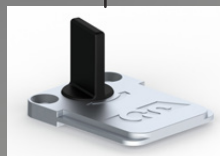
Extruded aluminum track
incorporated into head unit



Trim Clips for quick
& easy trim fitting

Compatible with
4" and 6" stud sizes

Bottom plate assembly



Adjustable T-Guide

Patent Pending



Cycle tested
1 million openings



ADA Compliant



Available with
SofStop®



Single or
Bi-Parting units



Maximum door
weight

Instructions/
Instrucciones



CS Track Systems and Hardware for Sliding Doors

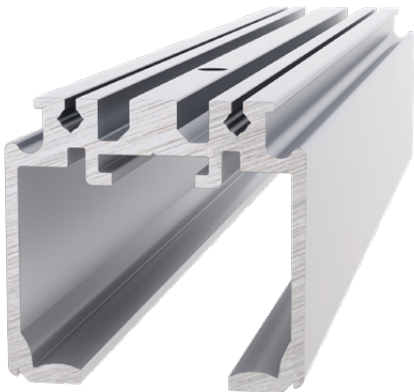
CS CaviTrack

Low profile track system suitable for incorporating into pocket door frame assemblies.



Design Features & Options

- Track is made from high-quality, heavy duty extruded aluminum
- Track is notched for simple carriage insertion
- Track can be configured to suit bi-parting or corner meeting door setups
- Double and triple tracks are available
- Compatible with standard and soft close carriages



CL400 Magnetic

Patented magnetic pocket door handle that features a magnetic catch and plunger system.

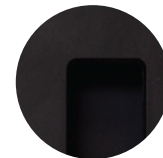


Design Features & Options

- Configurations include Passage, Privacy, Key Locking, Bi-Parting
- Design ensures that the doors slides flush back into the pocket
- Suitable for doors 1-3/8" and 1-3/4" thick
- Available in five standard finishes



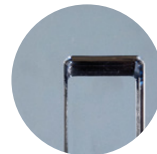
Satin Nickel



Matte Black



Oil Rubbed Bronze



Bright Chrome
Special Order



Satin Chrome
Special Order