

# ATTACK ON PEARL HARBOR



Prepared by Les Dropkin

January, 2007

# ATTACK ON PEARL HARBOR

## A photographic Record

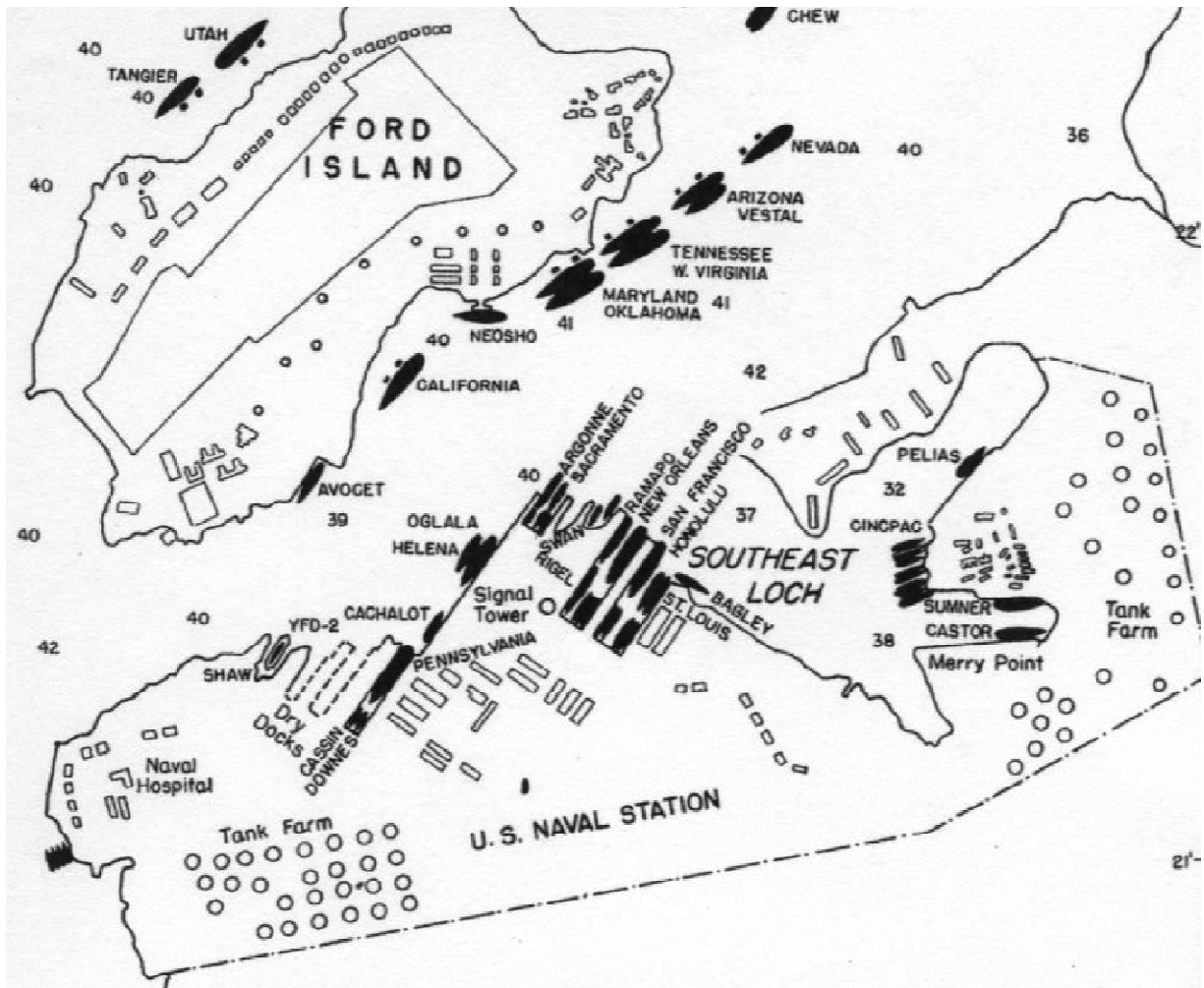


“Yesterday, December 7th, 1941 – a date which will live in infamy – the United States of America was suddenly and deliberately attacked by naval and air forces of the Empire of Japan.”

The beginning of President Roosevelt’s address to the Congress on December 8<sup>th</sup>, asking for a declaration that a state of war existed.

# PEARL HARBOR

AT 0755 SUNDAY  
7 DECEMBER 1941





Battleship Row 3 days after the attack. Seen (left to right) are the *California*; the *Oklahoma* (capsized) next to the *Maryland*; the *West Virginia* outboard of the *Tennessee*; and the *Arizona*.

National Archives # 80 G 387565



The U. S. Hawaiian Air Base at Wheeler Airfield. The hangars on the leeward side have burst into flames after being bombed. The rows of planes have not yet been destroyed by bombing.

National Archives # 80 G 30555  
(A Captured Japanese Photo)



View of Battleship Row on fire. Capsized minelayer *Ogala* in foreground.

National Archives # 80 G 474789



View of Battleship Row on fire. The *Tennessee* and *West Virginia* are in the center of the photo. The capsized battleship *Oklahoma* is at the left.

National Archives # 80 G 32750



The burning *West Virginia* sinks at her berth with her side ripped open after taking as many as 7 torpedo hits. The relatively undamaged *Tennessee* is trapped by the *West Virginia* on one side and the mooring quays on the other. Smoke from the *Arizona* is seen on the right.

National Archives # 80 G 32726





A Japanese plane in action. The submarine *Narwhal* (seen in left foreground) was not hit.

National Archives # 80 G 32737



Wreckage at the Naval Air Station. The *Arizona* is in the background, shortly after her forward magazines exploded.

National Archives # 80 G 32744



The *Shaw*, her magazine exploding. The *Nevada* can be seen on the right, her foredeck on fire, as she prepares to try to make it to the clear channel.

National Archives # 80 G 16871



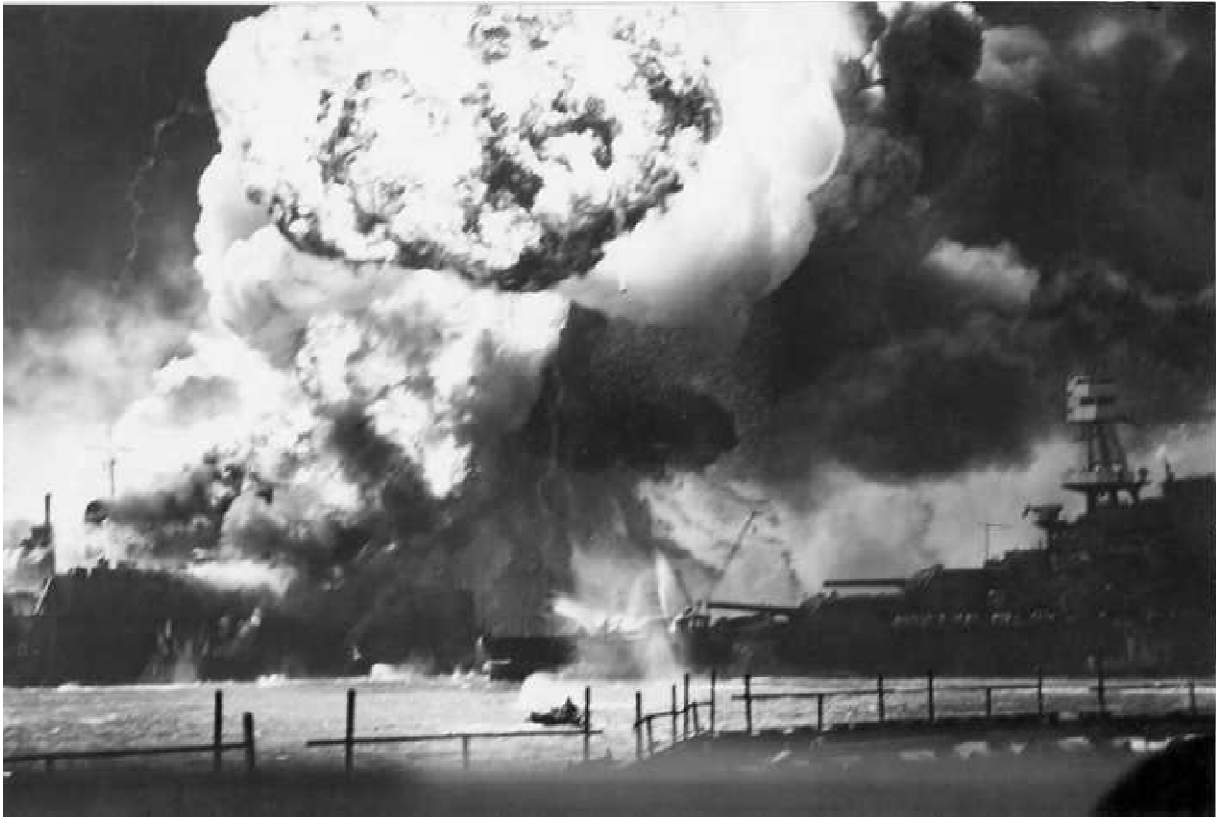
The *Shaw* as her magazine explodes.

National Archives # 80 G 32573



The destroyers *Downes* (left) and *Cassin* (right) in dry dock; the *Pennsylvania* [the flagship of the Pacific Fleet] is in the rear. The machinery and fittings of the *Cassin* and *Downes* were salvaged and used in new hulls. The *Pennsylvania* suffered only minor damage.

National Archives # 80 G 19943



The explosion of the *Arizona's* forward magazines. The burning debris rained down on the nearby *West Virginia* setting her on fire; the burning fuel gushing out from the *Arizona* produced a wall of fire that raced toward the *West Virginia* and the *Tennessee*.

National Archives # 80 G 32637



The *California* listing after being torpedoed twice. To her right the oiler *Neosho*, fully loaded with aviation fuel, is trying to move out of harm's way. Although strafed by Japanese planes about an hour later, the *Neosho* did not receive any hits that would have resulted in a horrific inferno.

National Archives # 80 G 20047



In the second Japanese attack wave the California also suffered from an explosion by a bomb that penetrated to the second deck. The explosion caused the rupture of the forward bulkheads as well as intensive fires.

National Archives # 80 G 32740





Although hit by a torpedo on her port bow, the *Nevada* tried to get to open ocean waters, but was hit by a bomb on her forward deck while still in the channel.

National Archives # 80 G 19940



The *Nevada* as she deliberately grounded herself off Hospital Point to avoid sinking and blocking the channel.

National Archives # 80 G 32559

# U. S. LOSSES AT PEARL HARBOR

## CASUALTIES:

Killed: 218, Army; 2008, Navy; 109, Marines; 68, Civilians - 2403 in Total

Wounded: 364, Army; 710, Navy; 69, Marines; 35, Civilians - 1178 in Total

## BATTLESHIPS:

Arizona – Total Loss

Oklahoma – Total Loss

California – Sunk at berth; later raised and repaired

West Virginia - Sunk at berth; later raised and repaired

Nevada – Beached to prevent sinking; later repaired

Pennsylvania – Light damage

Maryland – Light damage

Tennessee – Light damage

Utah (used for target practice) – Sunk

## CRUISERS:

New Orleans – Light damage

San Francisco – Light damage

Detroit – Light damage

Raleigh – Heavily damaged, but repaired

Helena – Light damage

Honolulu – Light damage

## DESTROYERS:

Downes – Destroyed; parts salvaged

Cassin – Destroyed; parts salvaged

Shaw – Very Heavy damage

## MINELAYER:

Ogala – Sunk; later raised and repaired

## SEA PLANE TENDER:

Curtis – Severely damaged; later repaired

## REPAIR SHIP:

Vestal – Severely damaged; later raised and repaired

## AIRCRAFT:

188 Aircraft destroyed -

92 Navy; 96 Army Air Force