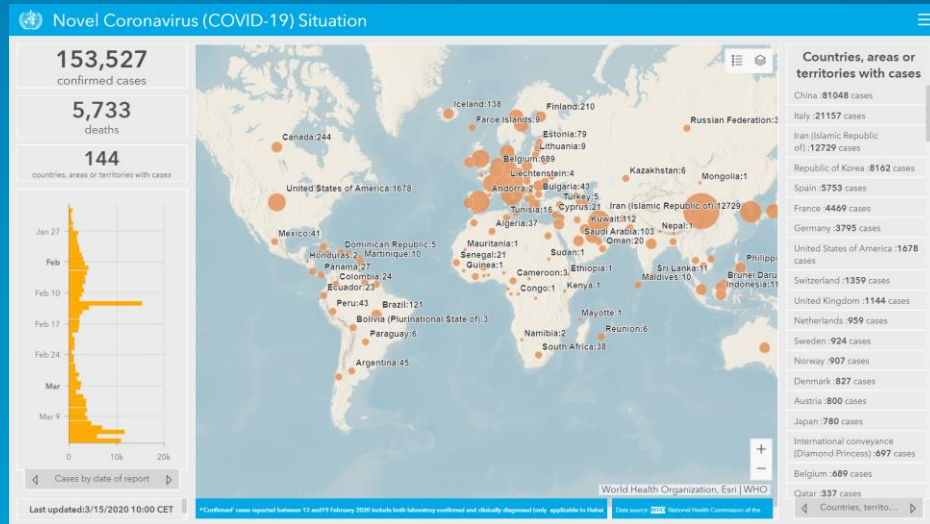
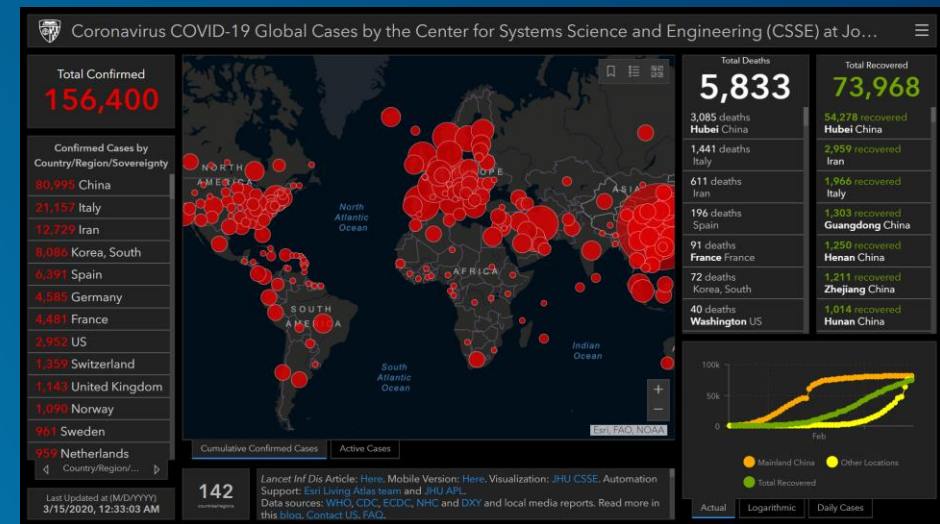


Key Dashboards – why are they different?



WHO Dashboard – Authoritative, now linked on Google when you search for COVID-19 or coronavirus. Built using ArcGIS Experience builder, so works on mobile or PC.

>100,000 requests per hour



JHU Dashboard – Authoritative, some differences from WHO based on confirmed vs presumptive cases. Benefit for US is that they have broken down the cases by county (WHO is by country). Separate mobile version.

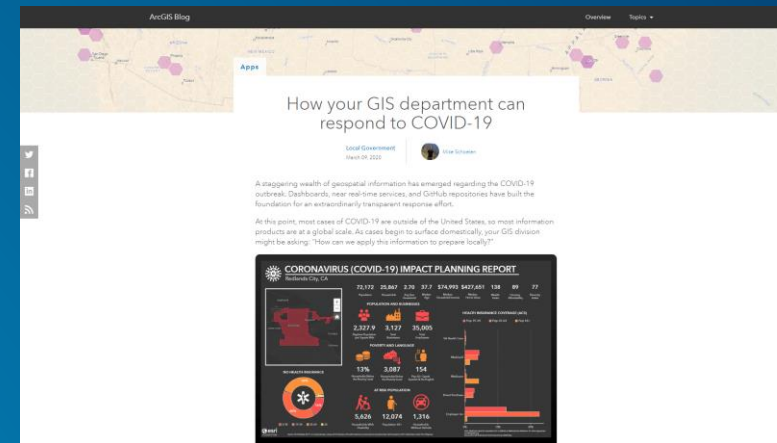
Recent stats...

>3 M requests per hour

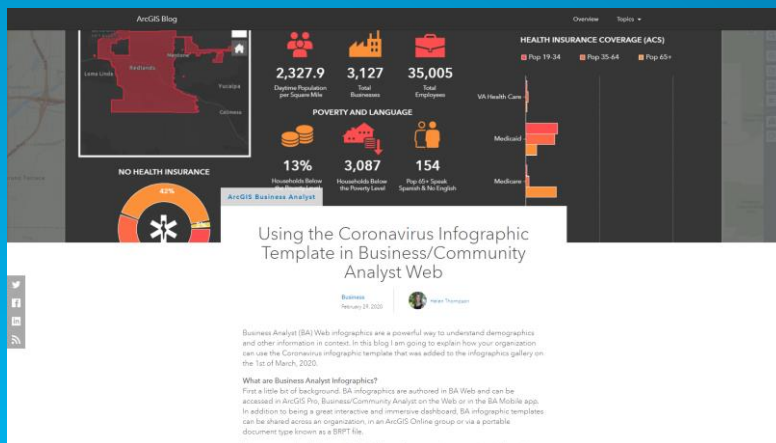
Helpful Blogs



[Malware Info Blog](#)
By Michael Young



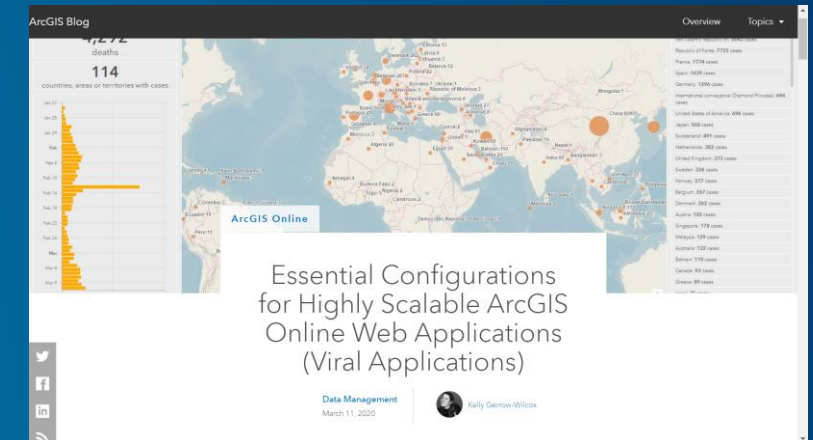
[How to respond to COVID-19](#)
By Mike Schoelen



[BA/CA Infographic](#)
By Helen Thompson



[Mapping Coronavirus Responsibly](#)
By Kenneth Field



[Scalable Apps Blog](#)
By Kelly Gerrow-Wilcox