



FRYSJA PARKEN

4- og 5-roms leiligheter

Hus C3 - 58 Selveierleiligheter - Kikut Sameie



STOR ØSLO
EIENDOM



Ekeberg

Vålerenga

Nydalen

Kjelsås

Norsk Teknisk Museum

Togstasjon

Stilla (bade plass)

Rema 1000

Maridalssjøen



Oslo S

Sentrum

Tåsen


FRYSJA
PARKEN



Marka



603

9

KIKUT
SAMEIE

1

10

FRYSJAVEIEN

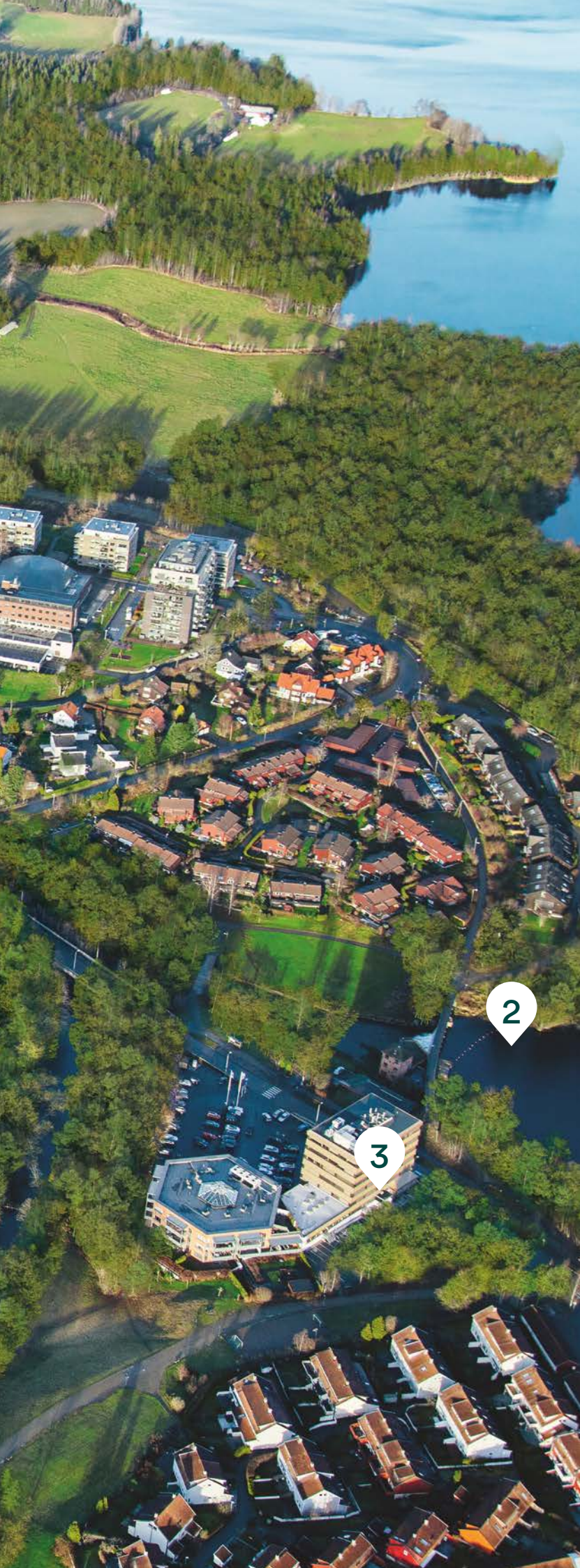
6

8

7

5

4



- 1 Nærmeste bussholdeplass, Frysja
- 2 Stilla, badeplass
- 3 Servicetilbud
- 4 Akerselva
- 5 Fremtidig skole
- 6 Fremtidig bussholdeplass
- 7 Bussholdeplass
- 8 Fremtidig barnehage
- 9 Bussholdeplass, Brekke
- 10 Fremtidig Frysja Torg med butikker

TRANSPORT

Frysja bussholdeplass	200 m
Kjelsås togstasjon	550 m
Kjelsåsalléen	
trikkholdeplass	850 m
Tåsen T-banestasjon	1.8 km

SPORT

Lysløype nr 603	300 m
Stadion Fysio/Trenings.	500 m
Engebråten Idrettshall	900 m
Akerselva miljøpark	1.3 km

VARER OG TJENESTER

Rema 1000 Kjelsås	500 m
Vitusapotek Kjelsås	500 m
Brekkehagen Kiosk	1 km

SKOLER OG BARNEHAGER

Stilla bhg 1-6 år	700 m
Engebråten bhg 1-6 år	800 m
Engebråten skole 8-10	900 m
Kjelsås skole 1-7	1 km
Kjelsås (skole) bhg 1-6 år	1 km

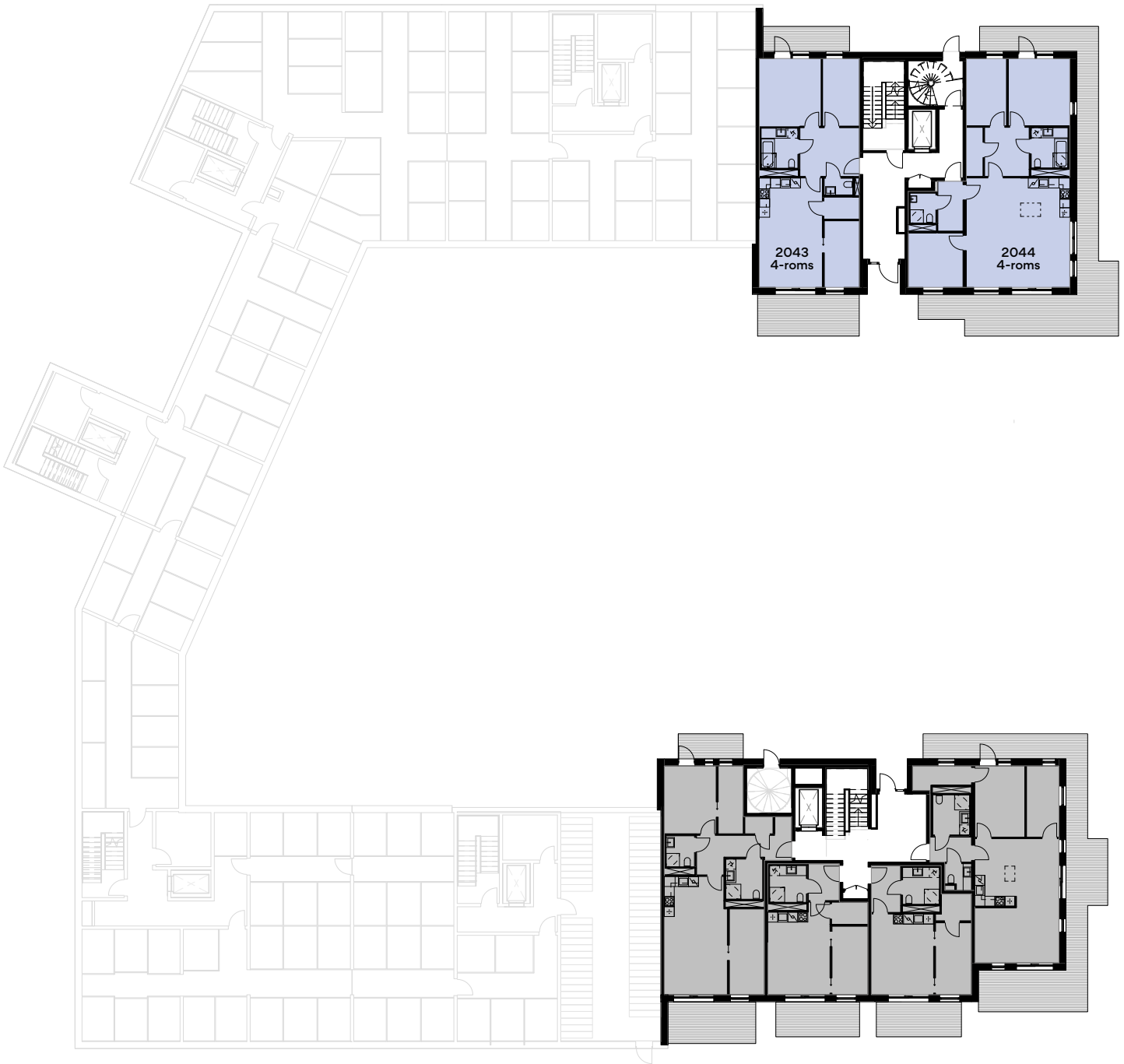
KULTURTILBUD

Frysja kunstsenter	550 m
Teknisk museum	600 m





Etasjeplaner hus C3 - Plan 2



Plan 3



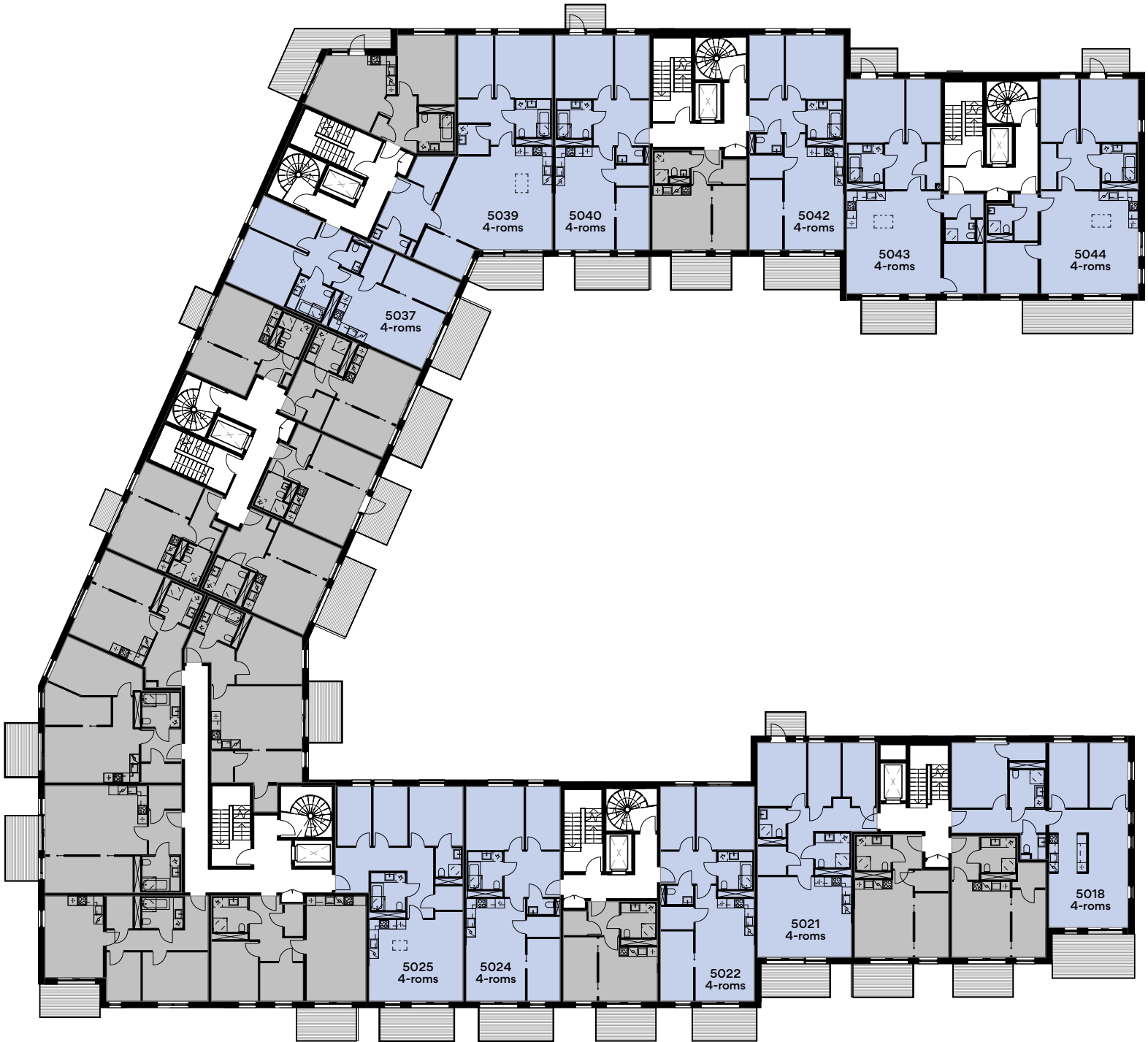
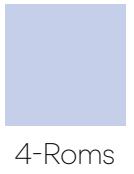
4-Roms



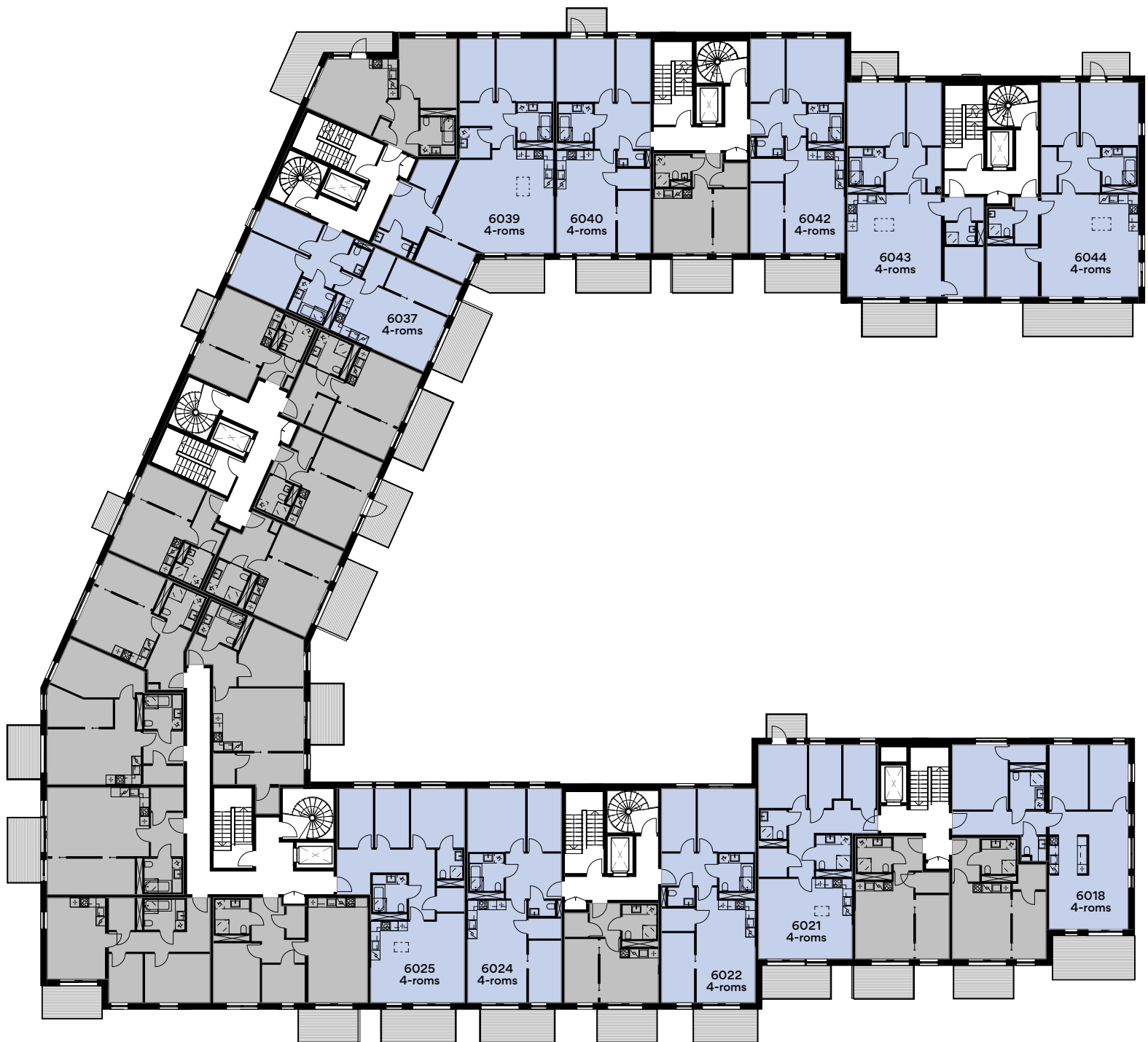
Etasjeplaner hus C3 - Plan 4



Plan 5



Etasjeplaner hus C3 - Plan 6



Plan 7

4-Roms 5-Roms



Etasjeplaner hus C3 - Plan 8



4-Roms













R O M S

4-roms

LEILIGHET
3018, 5018

PLAN
3,5

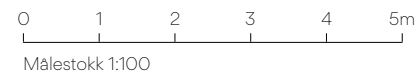
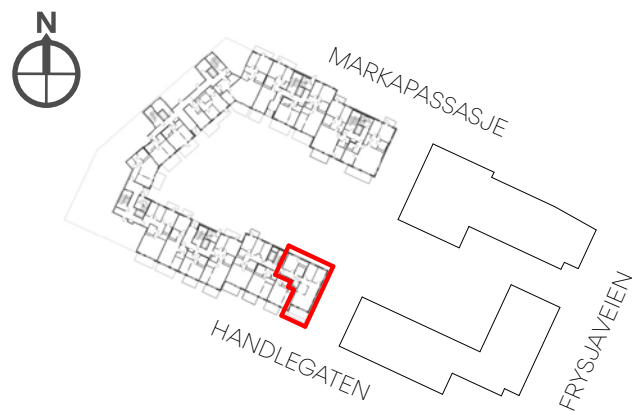
ROM
4

AREAL BRA
98,5 KVM

P-ROM
93,5 KVM

BALKONG
14,5 KVM

HUS
C3



FASADE MOT SYD

4-roms

LEILIGHET
4018, 6018

PLAN
4, 6

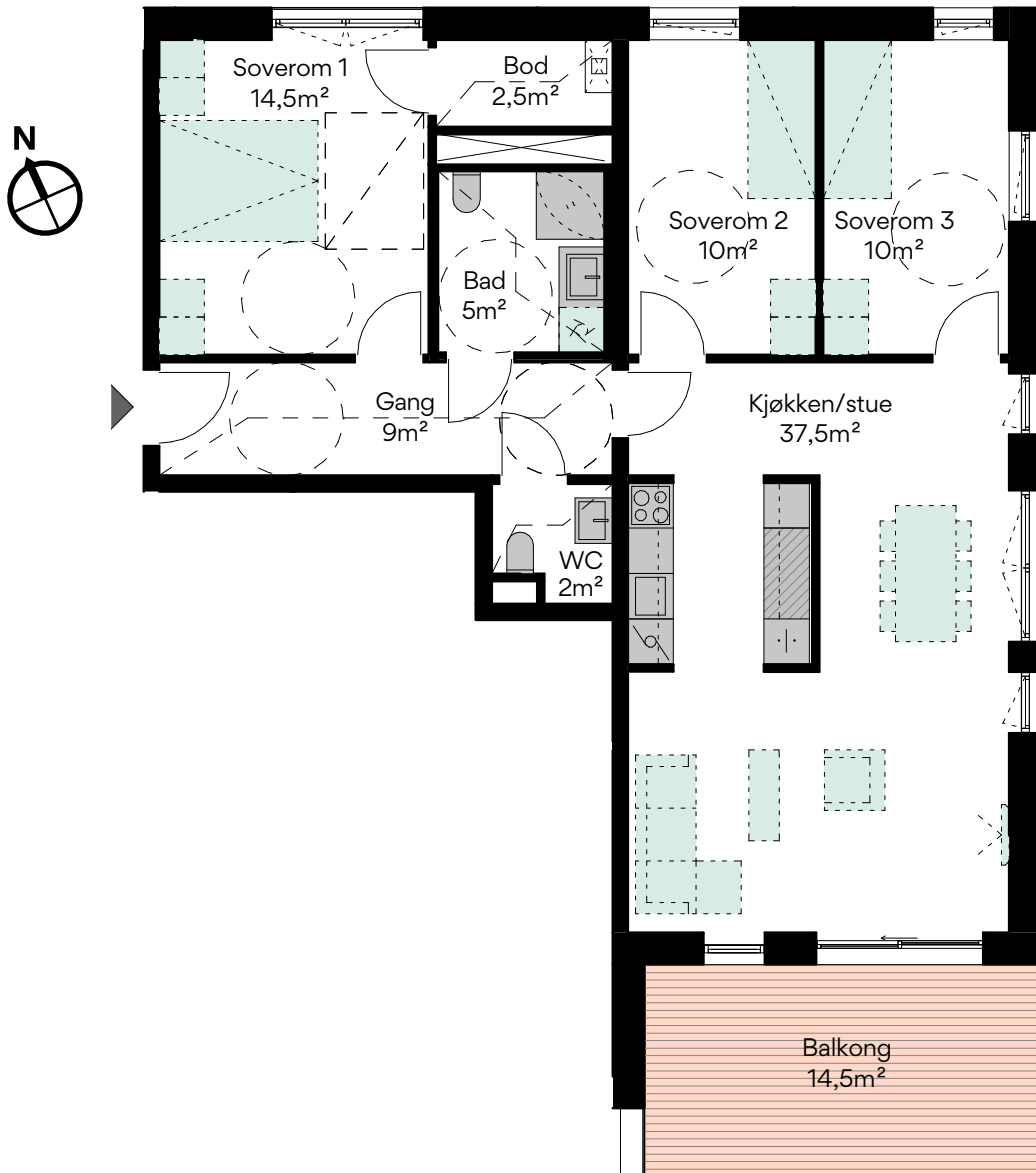
ROM
4

AREAL BRA
98,5 KVM

P-ROM
93,5 KVM

BALKONG
14,5 KVM

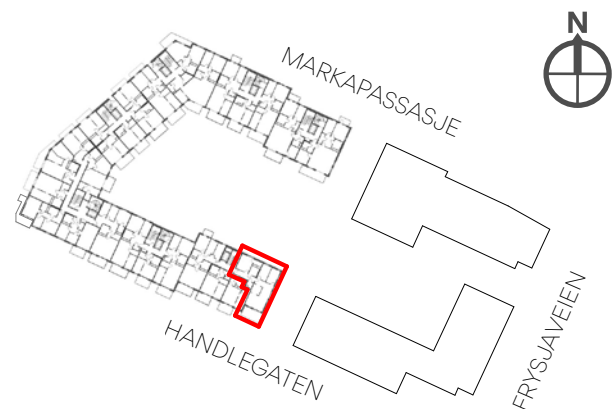
HUS
C3



0 1 2 3 4 5m
Målestokk 1:100



FASADE MOT SYD



4-roms

LEILIGHET
3021, 4021, 5021, 6021

PLAN
3, 4, 5, 6

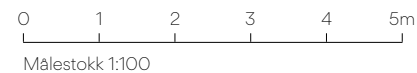
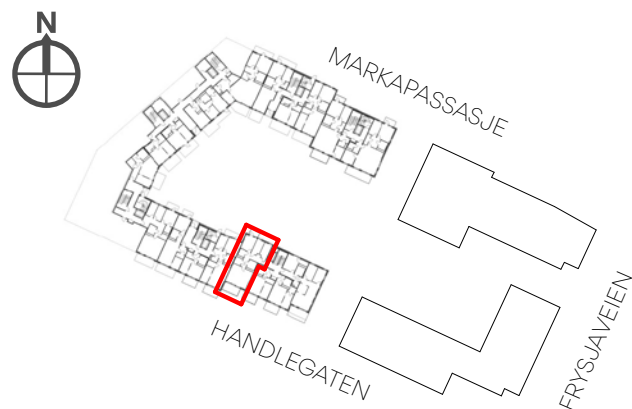
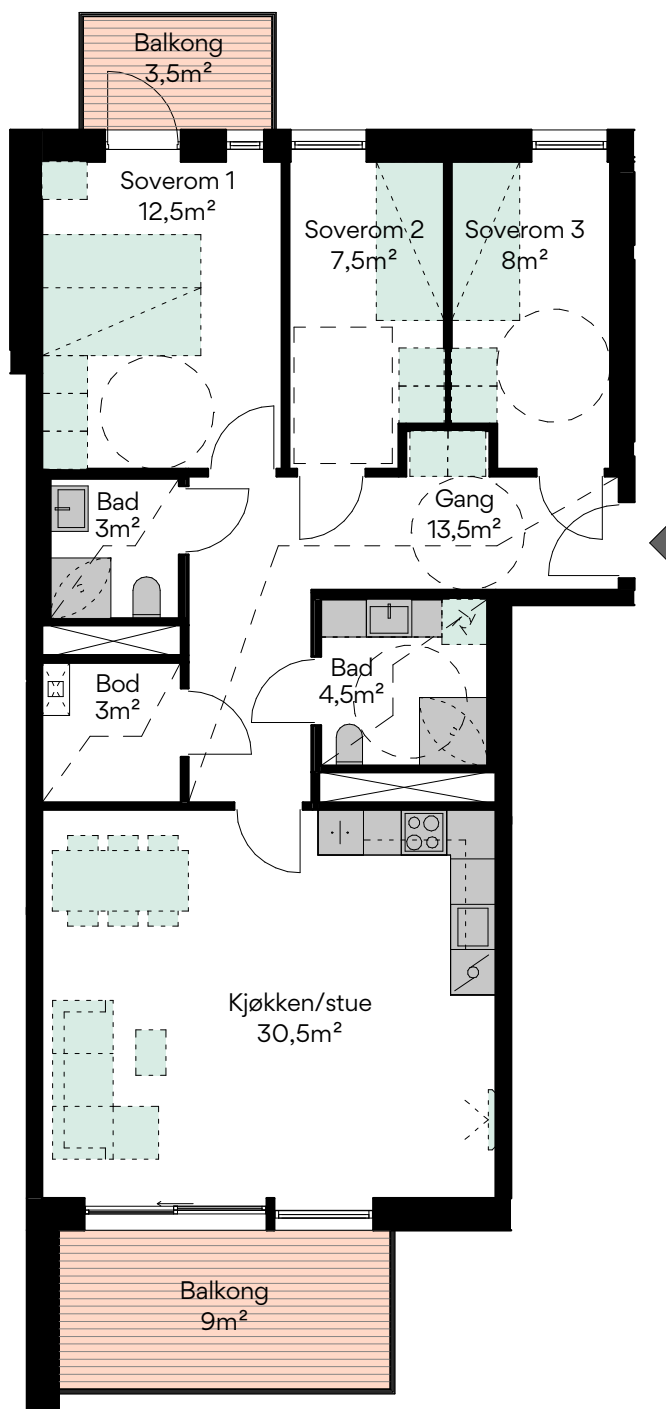
ROM
4

AREAL BRA
91,5 KVM

P-ROM
85 KVM

BALKONG
9 KVM + 3,5 KVM

HUS
C3



FASADE MOT SYD

4-roms

LEILIGHET
3022

PLAN
3

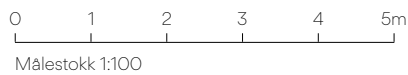
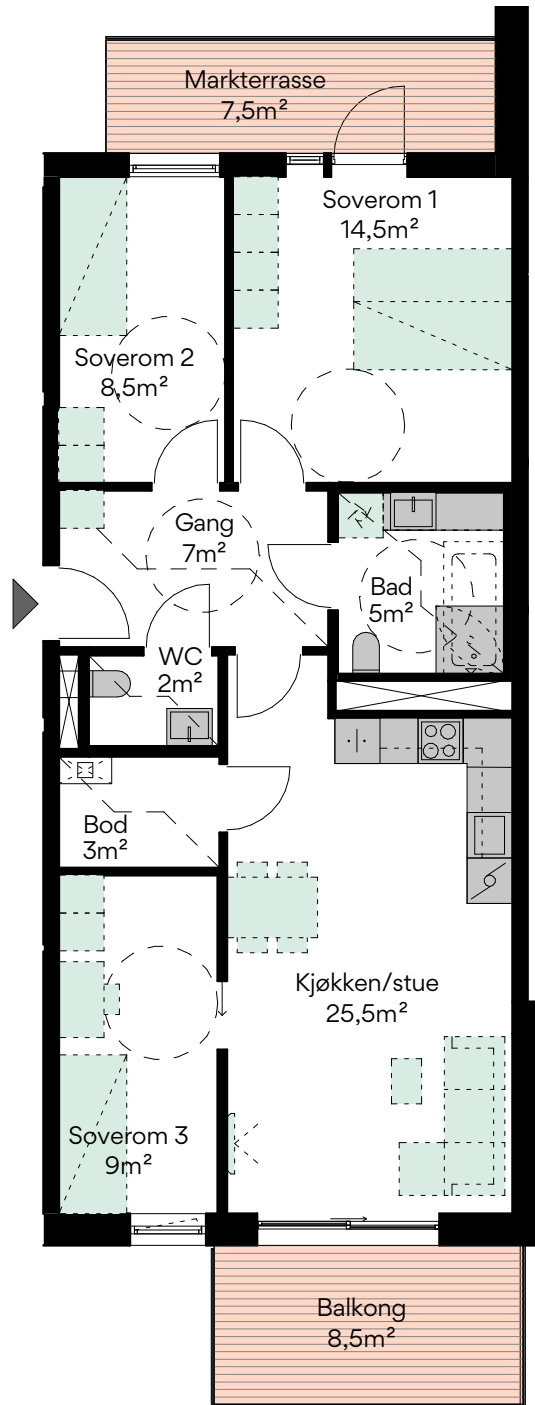
ROM
4

AREAL BRA
82,5 KVM

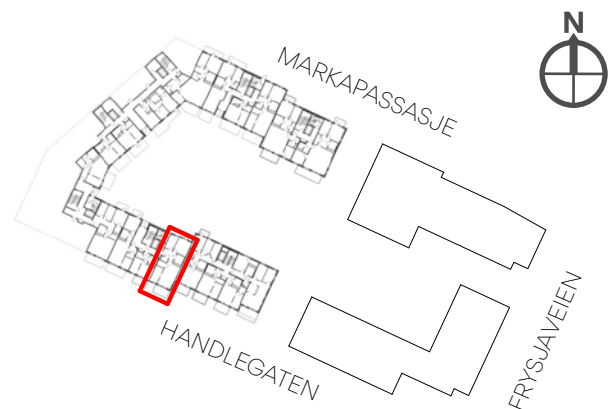
P-ROM
76,5 KVM

BALKONG / MARKTERRASSE
8,5 KVM + 7,5 KVM

HUS
C3



FASADE MOT SYD



4-roms

LEILIGHET
4022, 5022, 6022, 7022

PLAN
4, 5, 6, 7

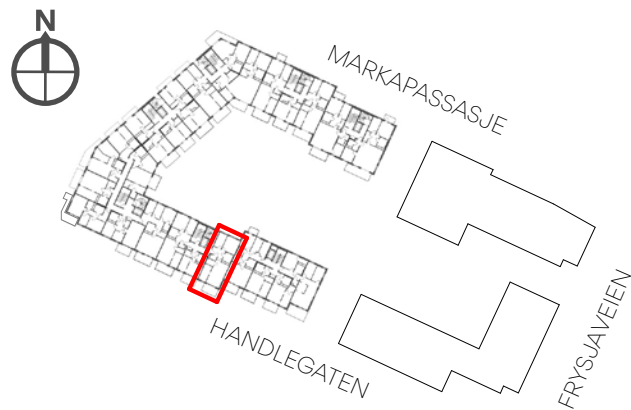
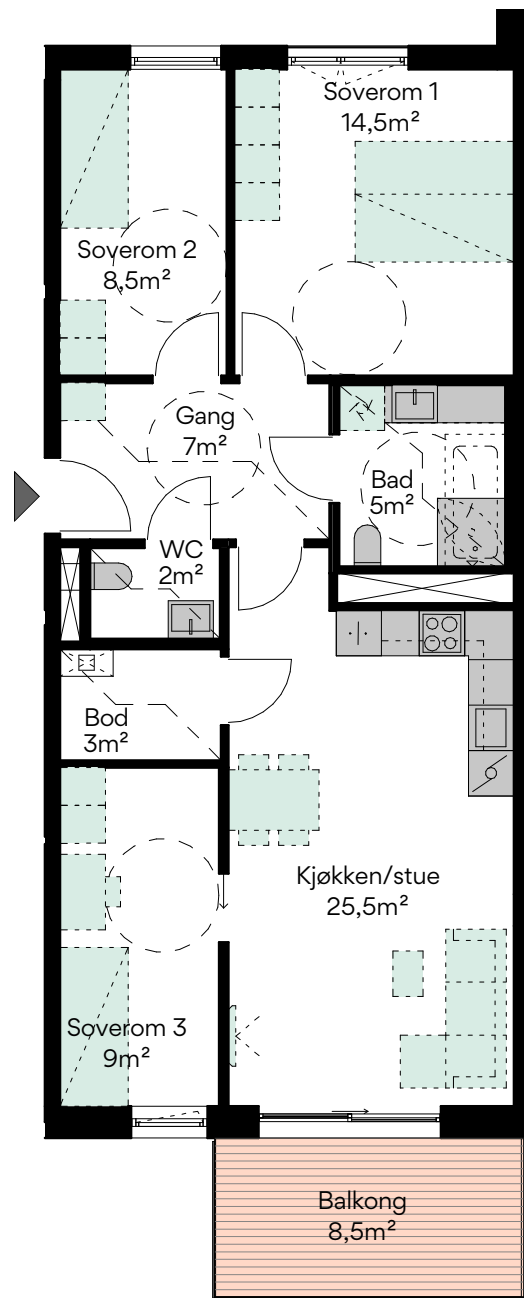
ROM
4

AREAL BRA
82,5 KVM

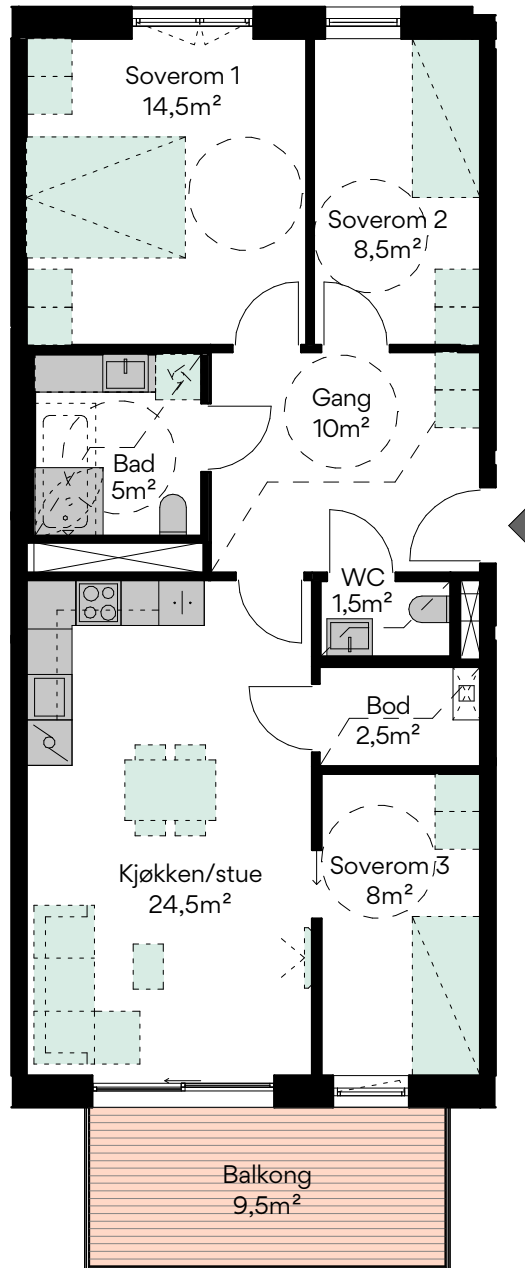
P-ROM
76,5 KVM

BALKONG
8,5 KVM

HUS
C3



FASADE MOT SYD



4-roms

LEILIGHET
4024, 5024, 6024, 7024

PLAN
4, 5, 6, 7

ROM
4

AREAL BRA
82,5 KVM

P-ROM
77 KVM

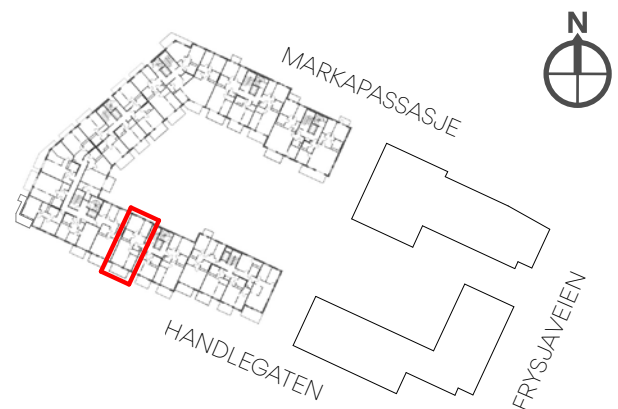
BALKONG
9,5 KVM

HUS
C3

0 1 2 3 4 5m
Målestokk 1:100



FASADE MOT SYD



4-roms

LEILIGHET
3025

PLAN
3

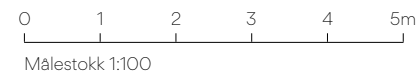
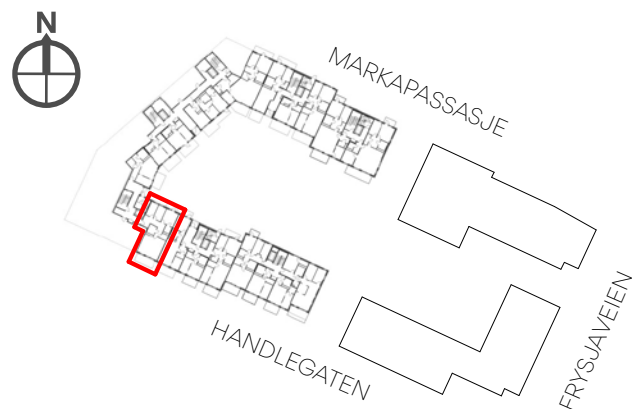
ROM
4

AREAL BRA
97 KVM

P-ROM
91,5 KVM

MARKTERRASSE
10,5 KVM + 4,5 KVM

HUS
C3



FASADE MOT SYD

4-roms

LEILIGHET
4025, 5025, 6025, 7025

PLAN
4, 5, 6, 7

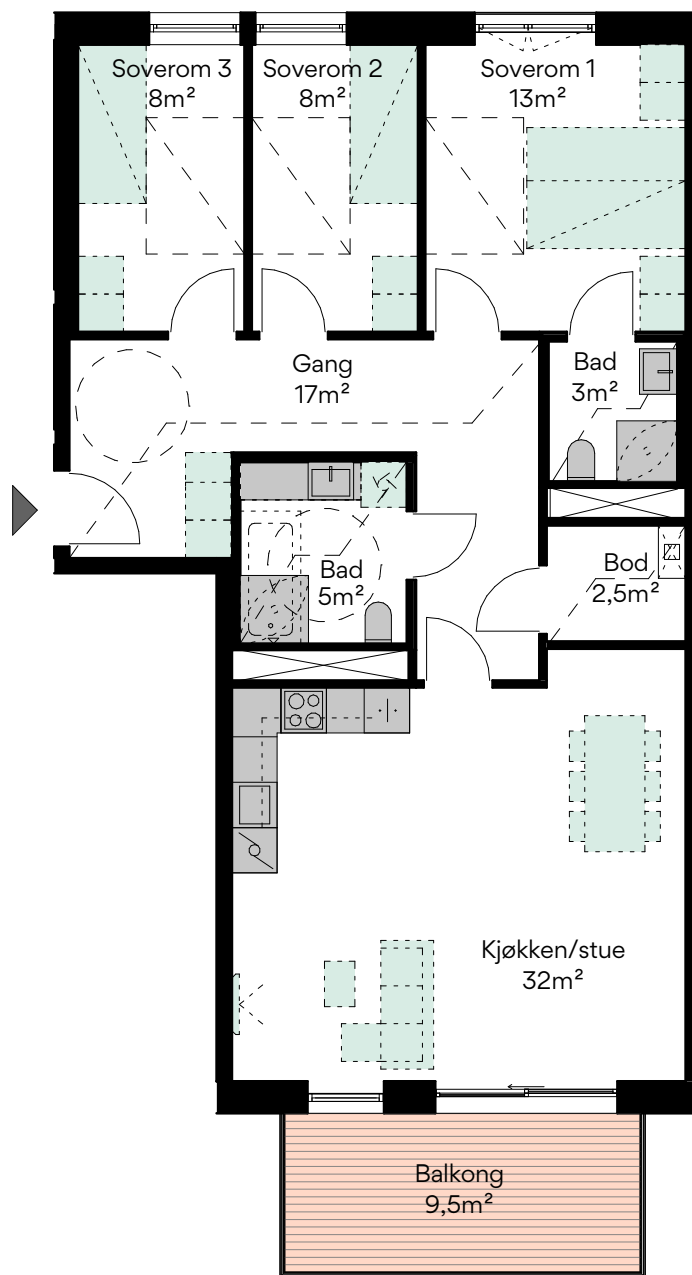
ROM
4

AREAL BRA
97 KVM

P-ROM
91,5 KVM

BALKONG
9,5 KVM

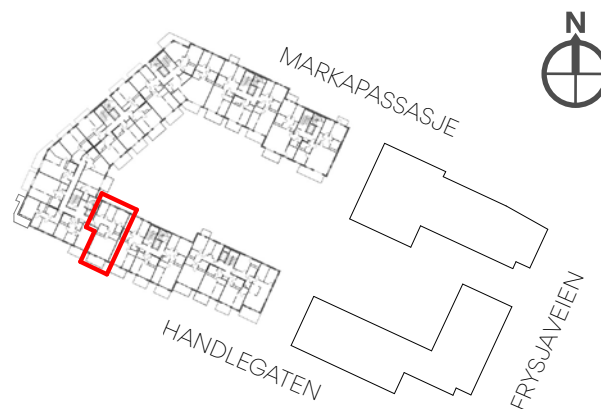
HUS
C3



0 1 2 3 4 5m
Målestokk 1:100



FASADE MOT SYD



4-roms

LEILIGHET
4037

PLAN
4

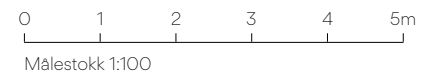
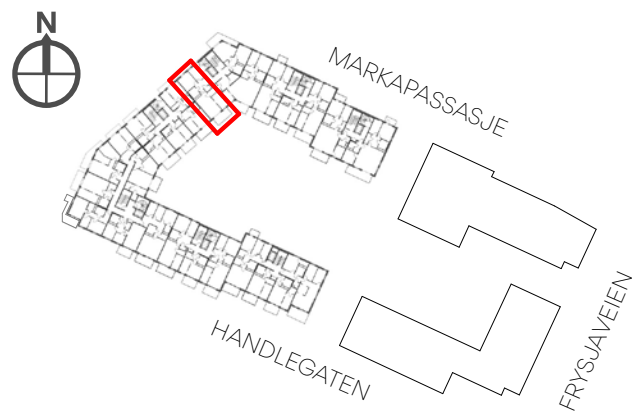
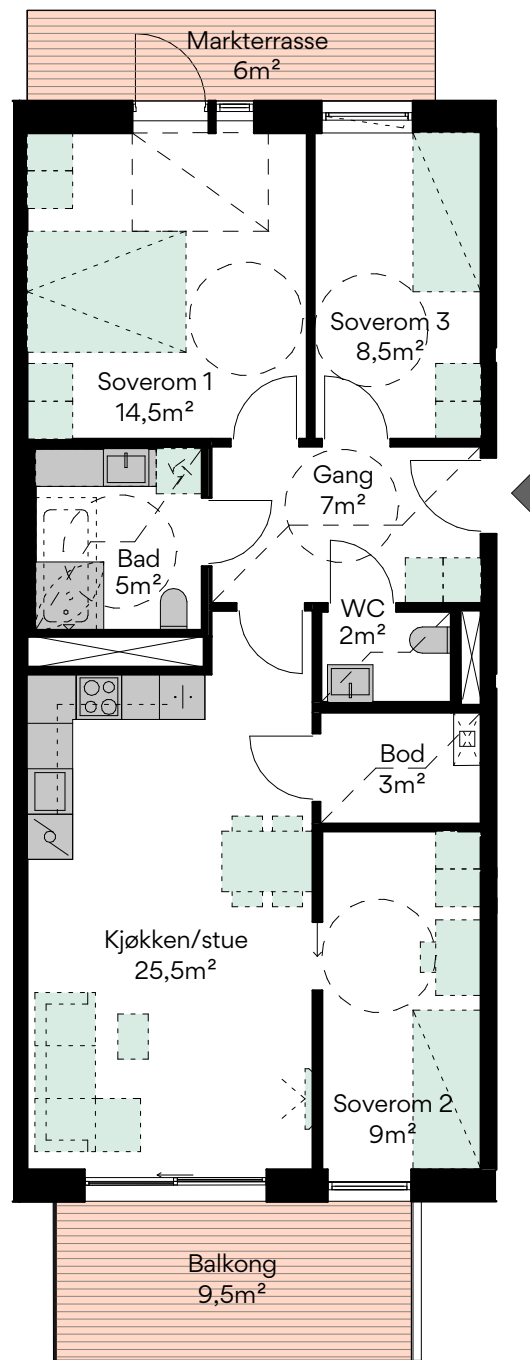
ROM
4

AREAL BRA
82,5 KVM

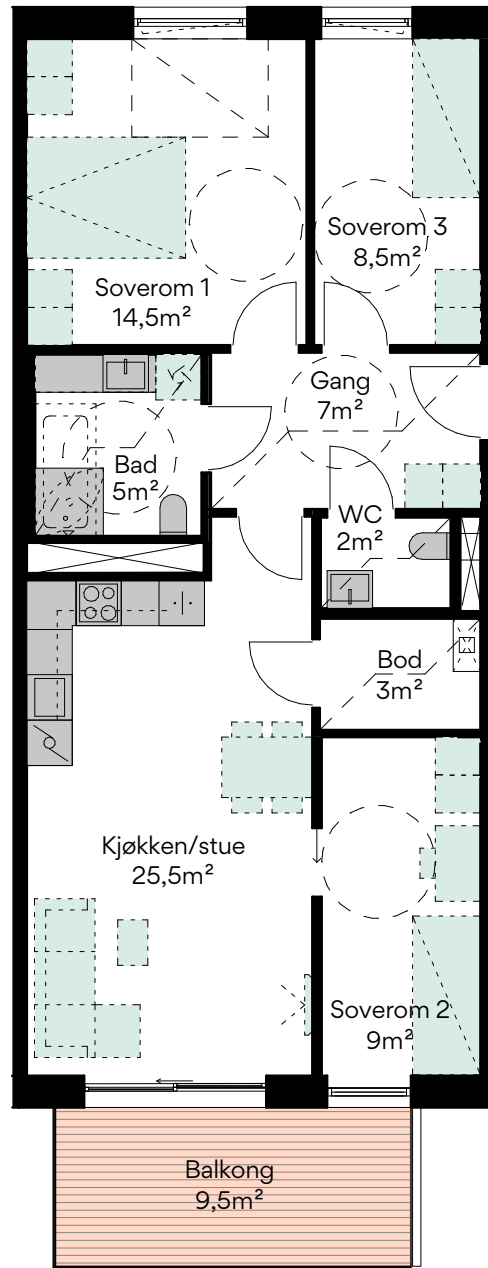
P-ROM
76,5 KVM

BALKONG / MARKTERRASSE
9,5 KVM + 6 KVM

HUS
C3



FASADE GÅRDSROM MOT ØST



4-roms

LEILIGHET
5037,7037

PLAN
5,7

ROM
4

AREAL BRA
82,5 KVM

P-ROM
76,5 KVM

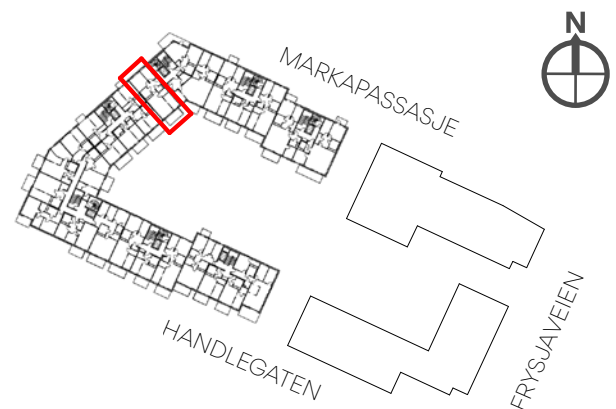
BALKONG
9,5 KVM

HUS
C3

0 1 2 3 4 5m
Målestokk 1:100



FASADE GÅRDSROM MOT ØST



4-roms

LEILIGHET
6037

PLAN
6

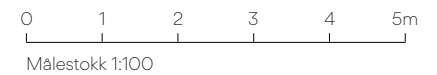
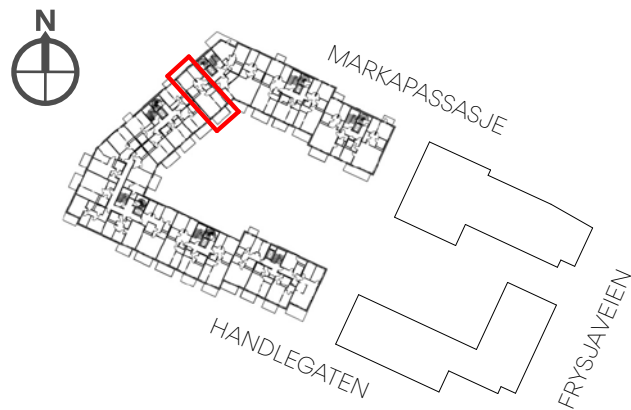
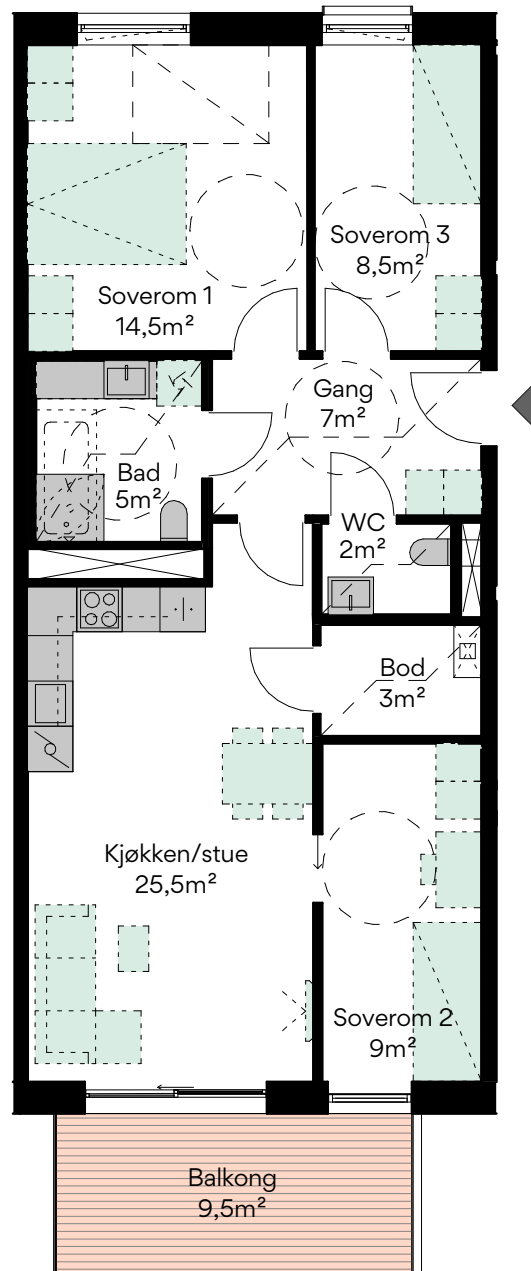
ROM
4

AREAL BRA
82,5 KVM

P-ROM
76,5 KVM

BALKONG
9,5 KVM

HUS
C3



FASADE GÅRDSROM MOT ØST

4-roms

LEILIGHET
3039

PLAN
3

ROM
4

AREAL BRA
113 KVM

P-ROM
106 KVM

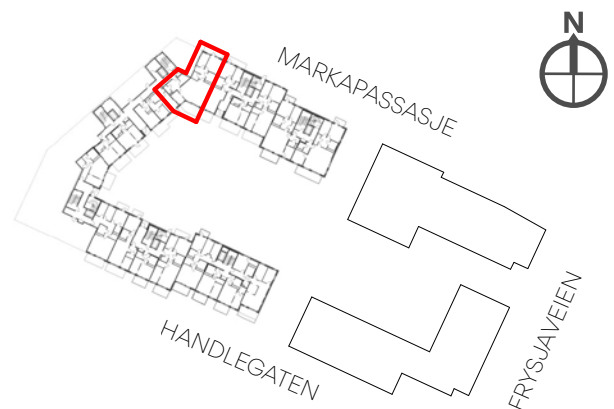
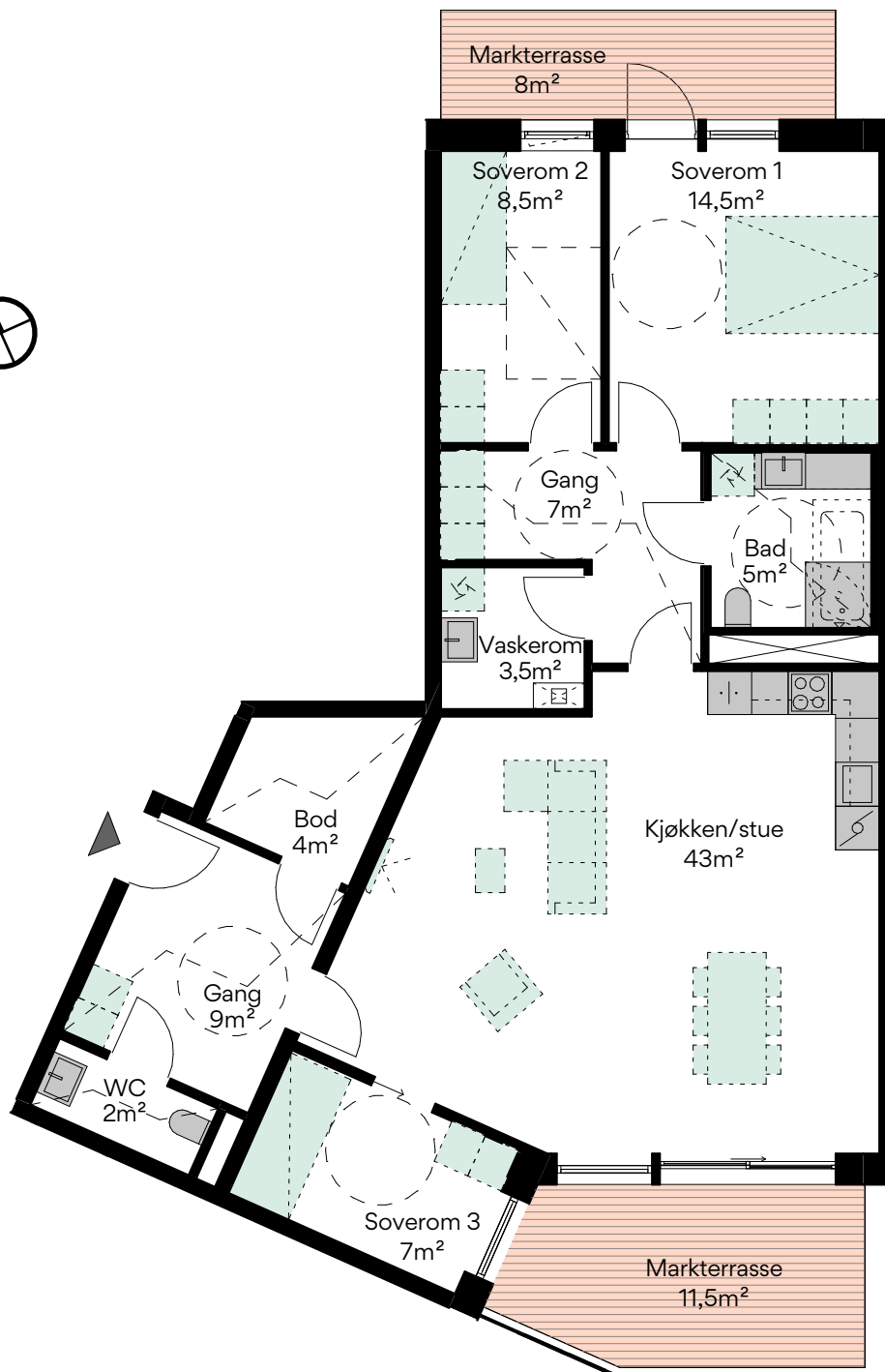
MARKTERRASSE
11,5 KVM + 8 KVM

HUS
C3

0 1 2 3 4 5m
Målestokk 1:100



FASADE GÅRDSROM MOT SYD



4-roms

LEILIGHET
4039, 5039, 6039, 7039

PLAN
4, 5, 6, 7

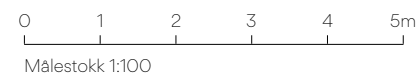
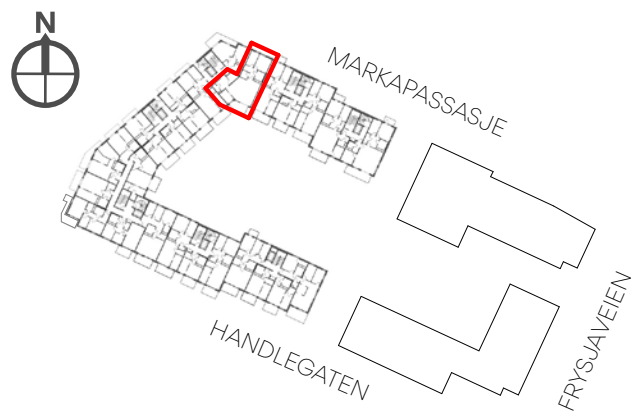
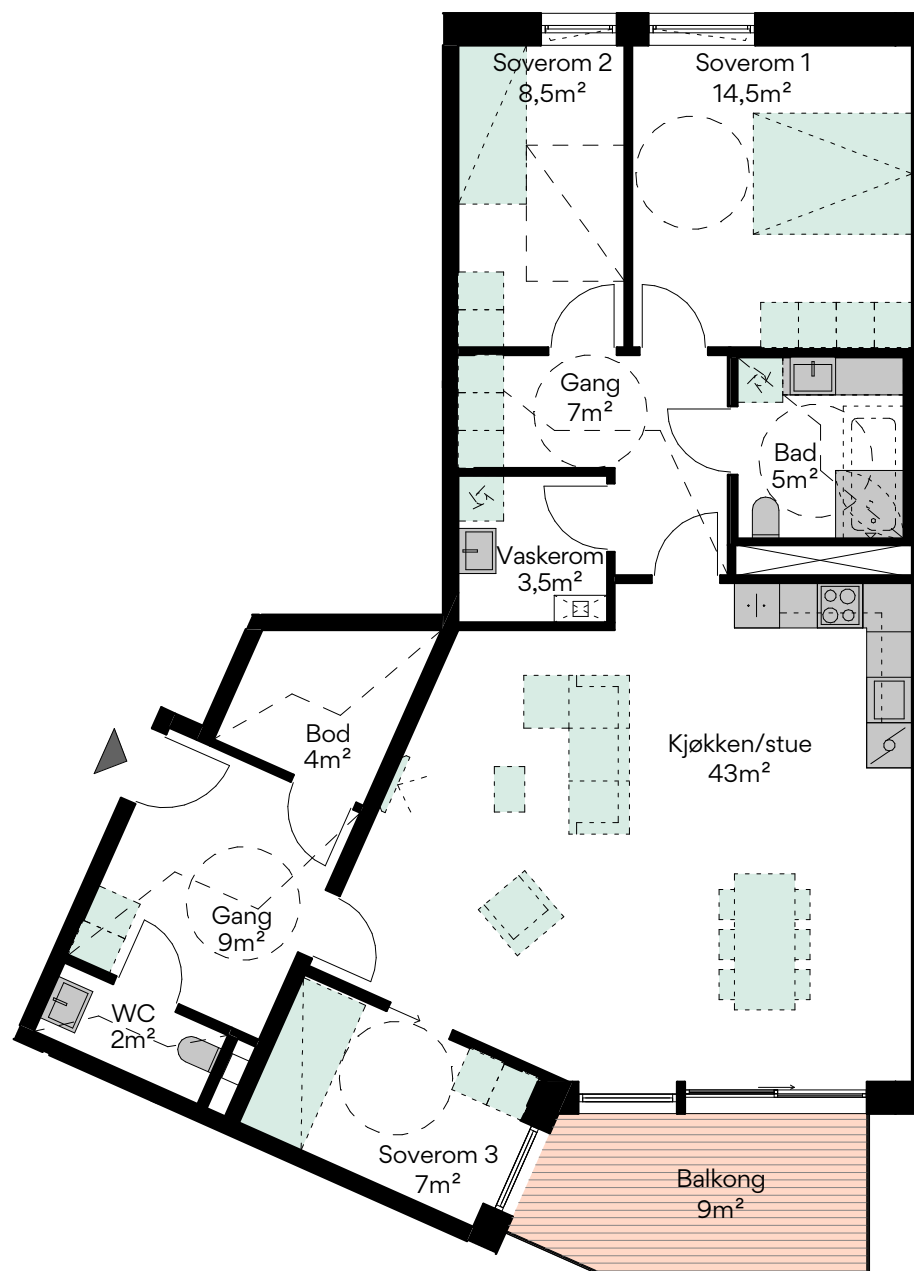
ROM
4

AREAL BRA
113 KVM

P-ROM
106 KVM

BALKONG
9 KVM

HUS
C3



FASADE GÅRDSROM MOT SYD

4-roms

LEILIGHET
4040, 5040, 6040, 7040

PLAN
4, 5, 6, 7

ROM
4

AREAL BRA
82,5 KVM

P-ROM
77 KVM

BALKONG
9,5 KVM + 3,5 KVM

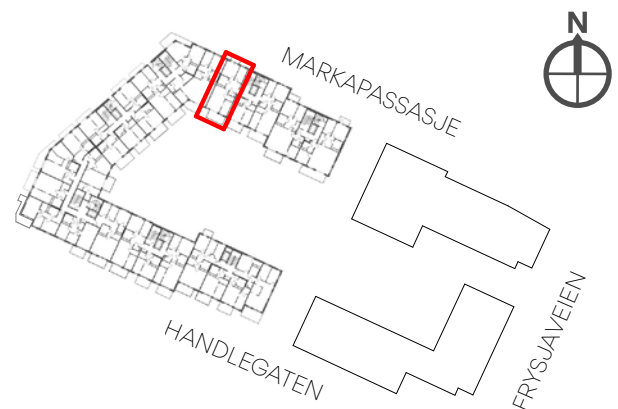
HUS
C3



0 1 2 3 4 5m
Målestokk 1:100



FASADE GÅRDSROM MOT SYD



4-roms

LEILIGHET
8040

PLAN
8

ROM
4

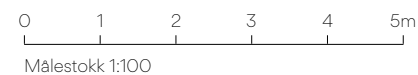
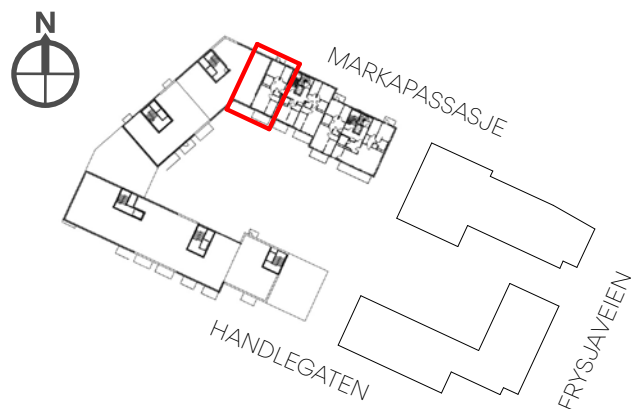
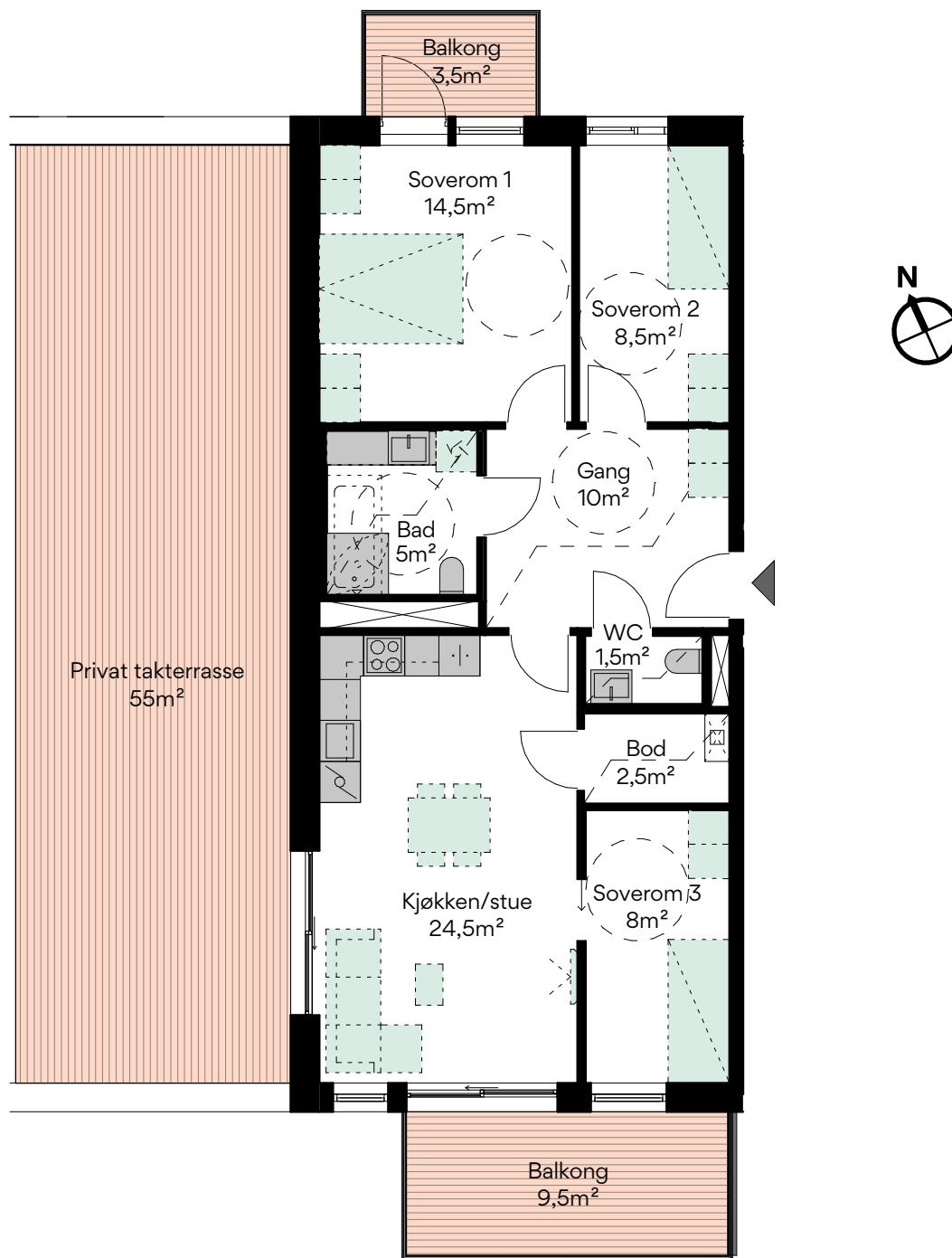
AREAL BRA
82,5 KVM

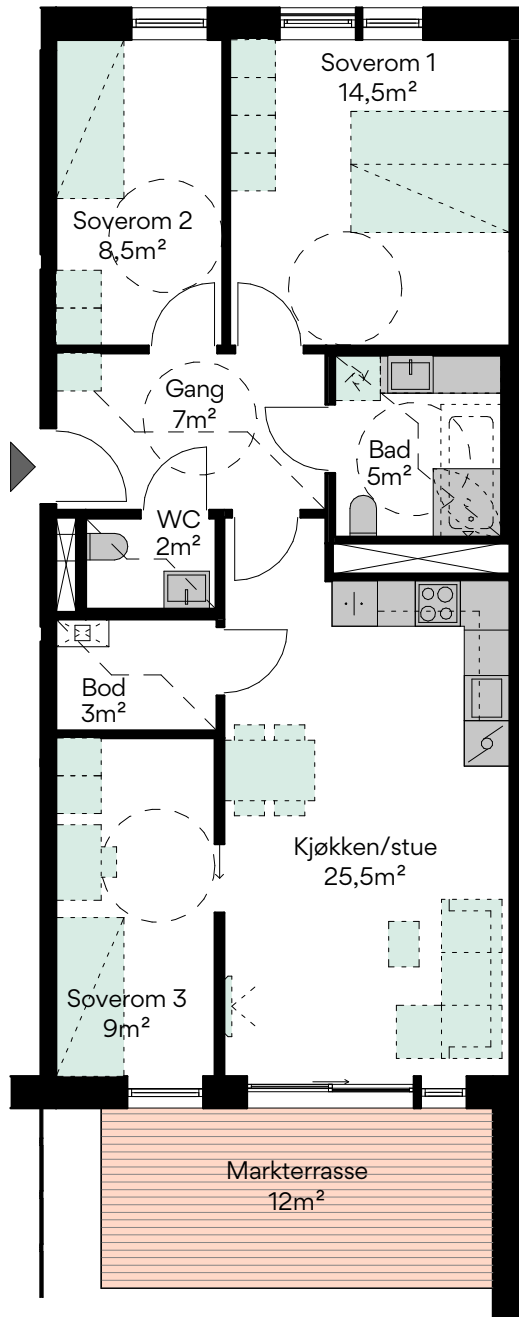
P-ROM
77 KVM

BALKONG
9,5 KVM + 3,5 KVM

PRIVAT TAKTERRASSE
55 KVM

HUS
C3





4-roms

LEILIGHET
3042

PLAN
3

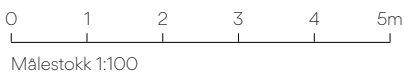
ROM
4

AREAL BRA
82,5 KVM

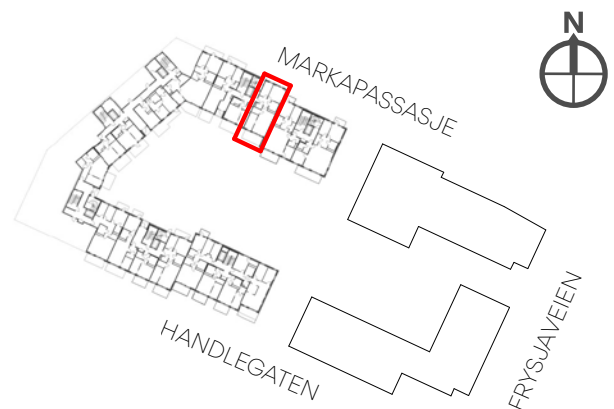
P-ROM
76,5 KVM

MARKTERRASSE
12 KVM

HUS
C3



FASADE GÅRDSROM MOT SYD



4-roms

LEILIGHET
4042, 5042, 6042, 7042, 8042

PLAN
4, 5, 6, 7, 8

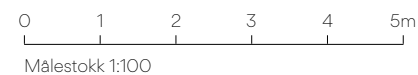
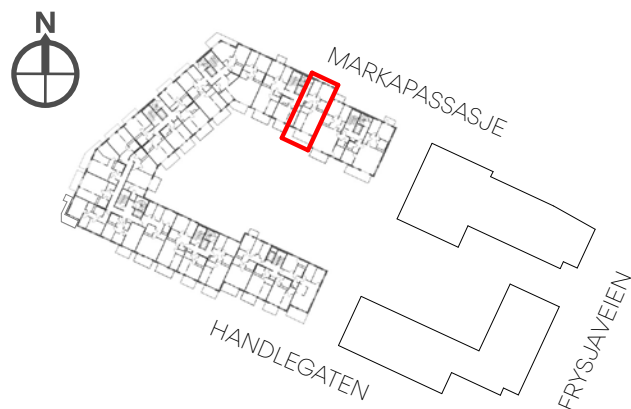
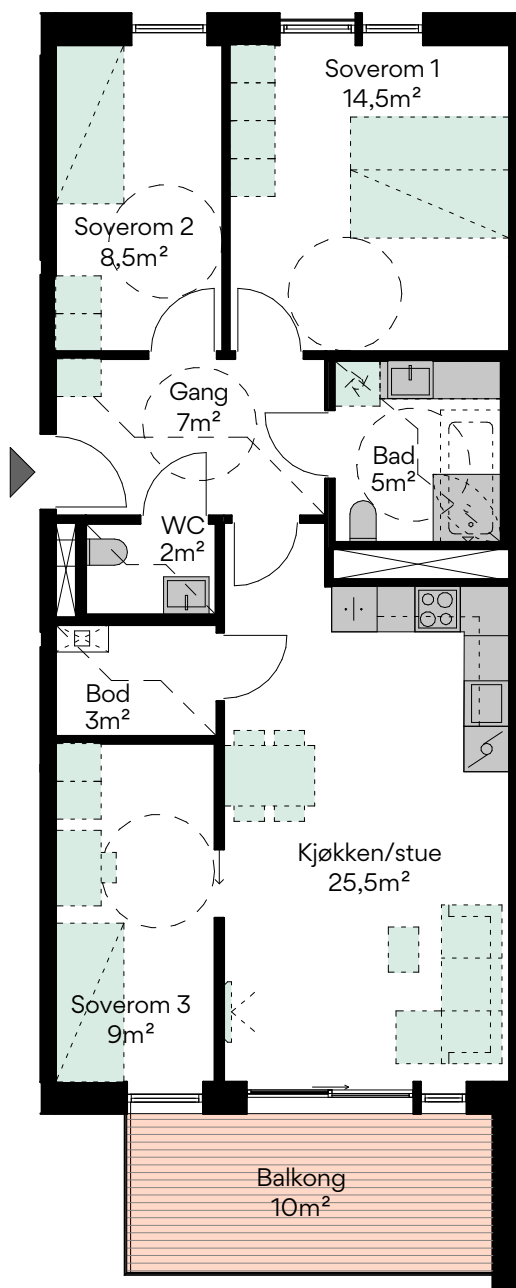
ROM
4

AREAL BRA
82,5 KVM

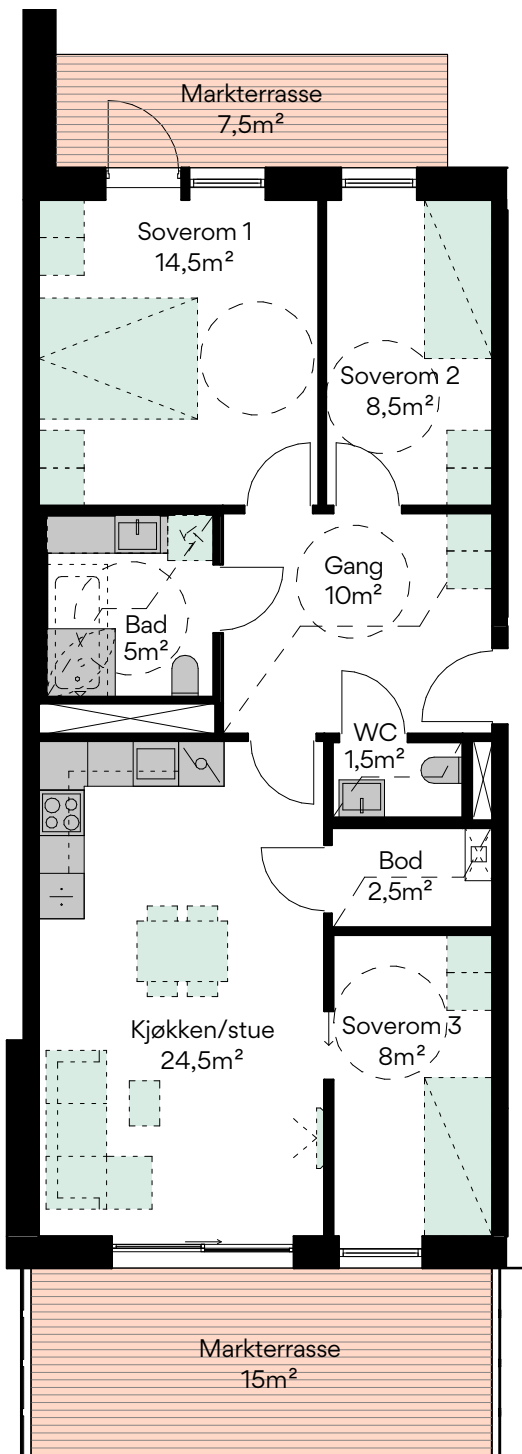
P-ROM
76,5 KVM

BALKONG
10 KVM

HUS
C3



FASADE GÅRDSROM MOT SYD



4-roms

LEILIGHET
2043

PLAN
2

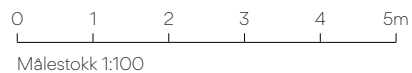
ROM
4

AREAL BRA
82,5 KVM

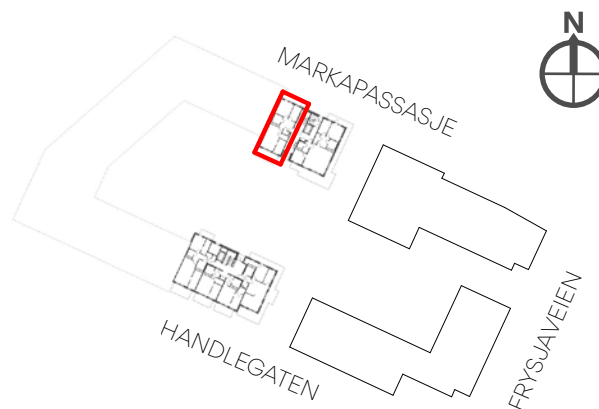
P-ROM
77 KVM

MARKTERRASSE
15 KVM + 7,5 KVM

HUS
C3



FASADE GÅRDSROM MOT SYD



4-roms

LEILIGHET
3043, 5043

PLAN
3,5

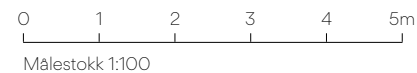
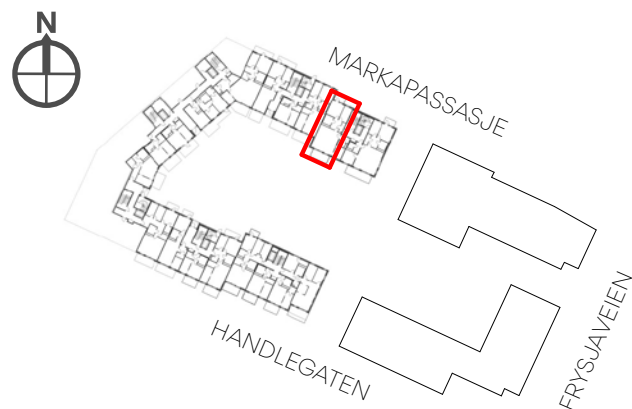
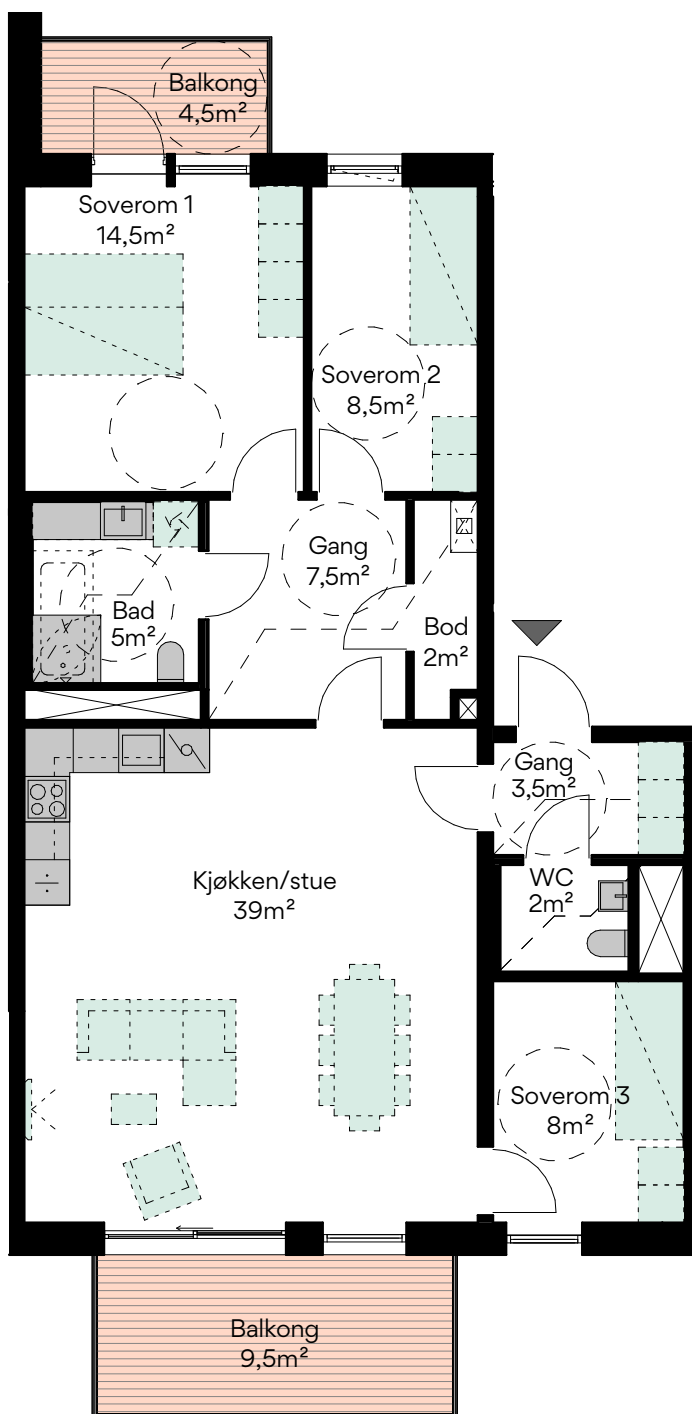
ROM
4

AREAL BRA
99,5 KVM

P-ROM
94 KVM

BALKONG
9,5 KVM + 4,5 KVM

HUS
C3



FASADE GÅRDSROM MOT SYD

4-roms

LEILIGHET
4043, 6043

PLAN
4, 6

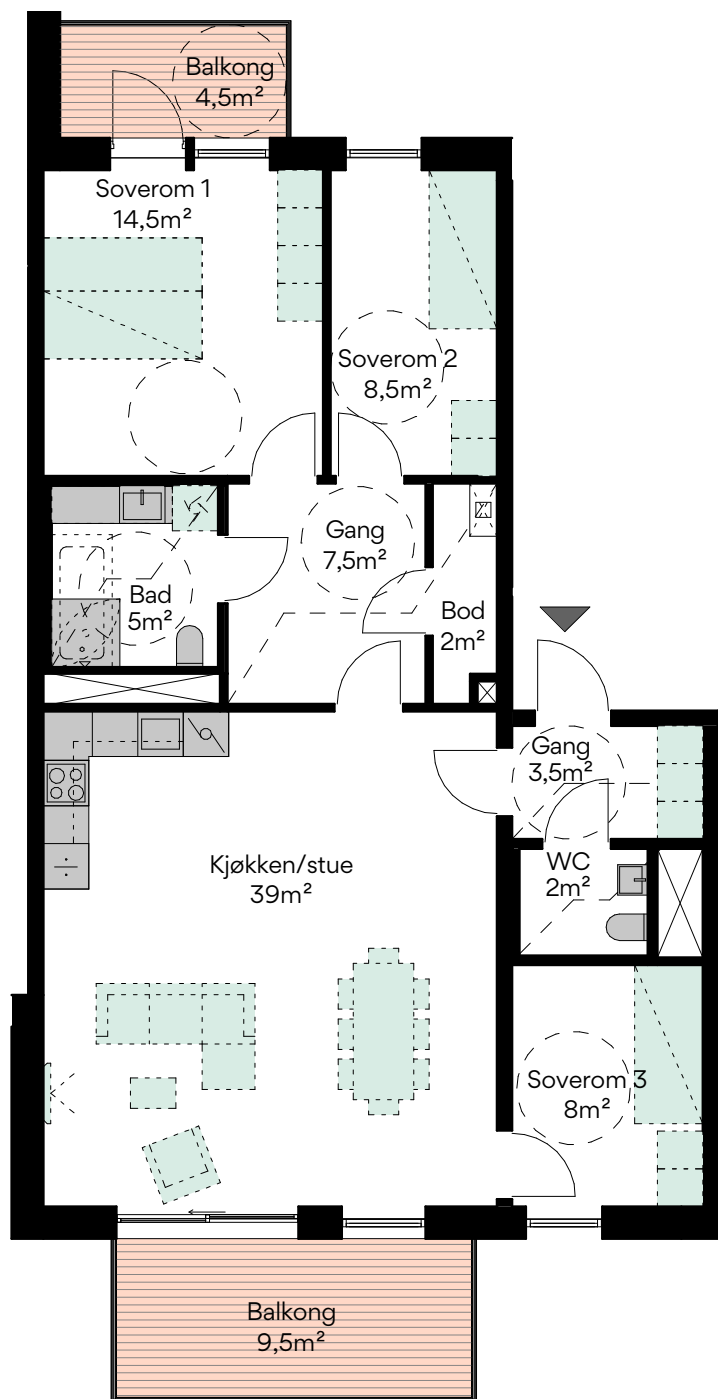
ROM
4

AREAL BRA
99,5 KVM

P-ROM
94 KVM

BALKONG
9,5 KVM + 4,5 KVM

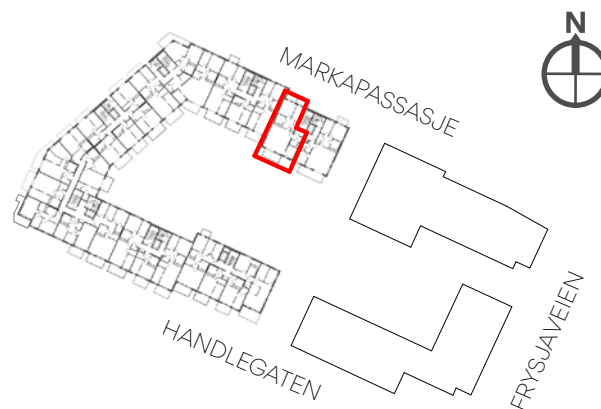
HUS
C3



0 1 2 3 4 5m
Målestokk 1:100



FASADE GÅRDSROM MOT SYD



4-roms

LEILIGHET
7043

PLAN
7

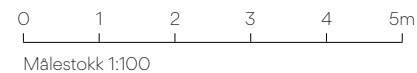
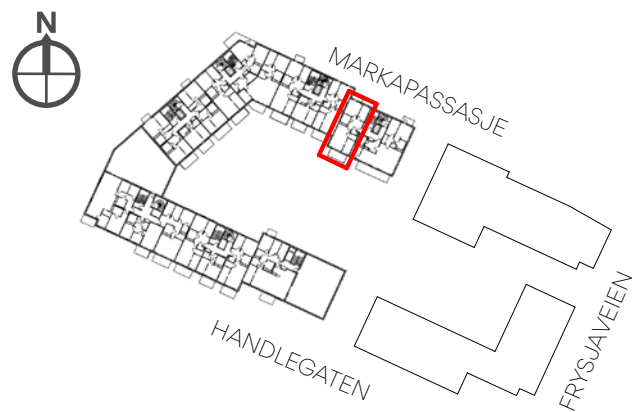
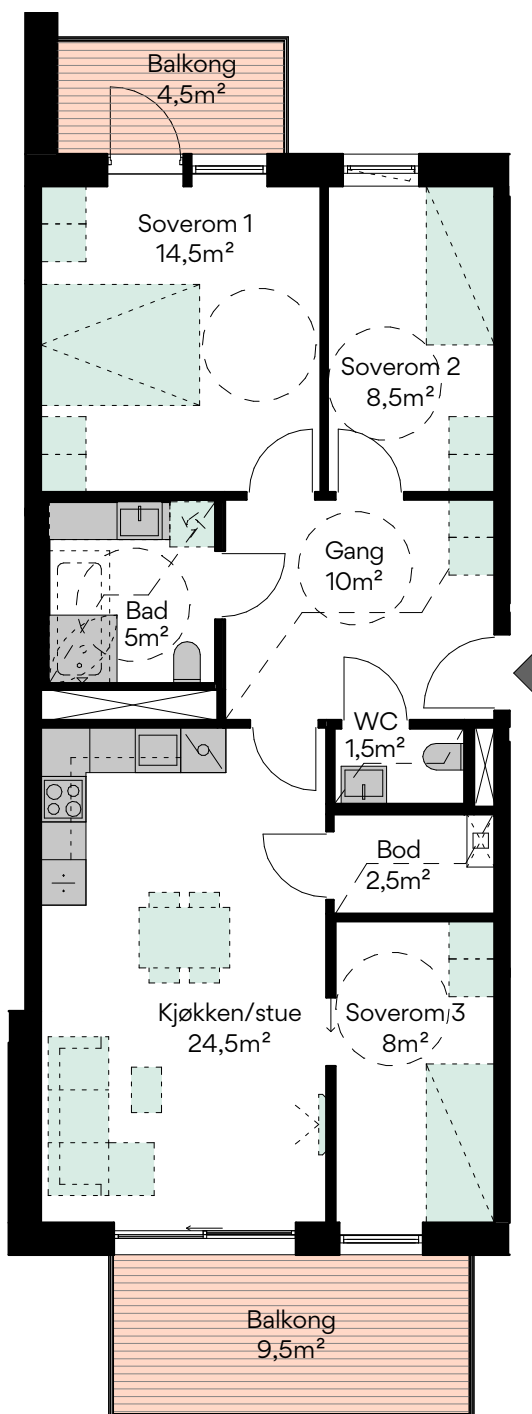
ROM
4

AREAL BRA
82,5 KVM

P-ROM
77 KVM

BALKONG
9,5 KVM + 4,5 KVM

HUS
C3



FASADE GÅRDSROM MOT SYD

4-roms

LEILIGHET
8043

PLAN
8

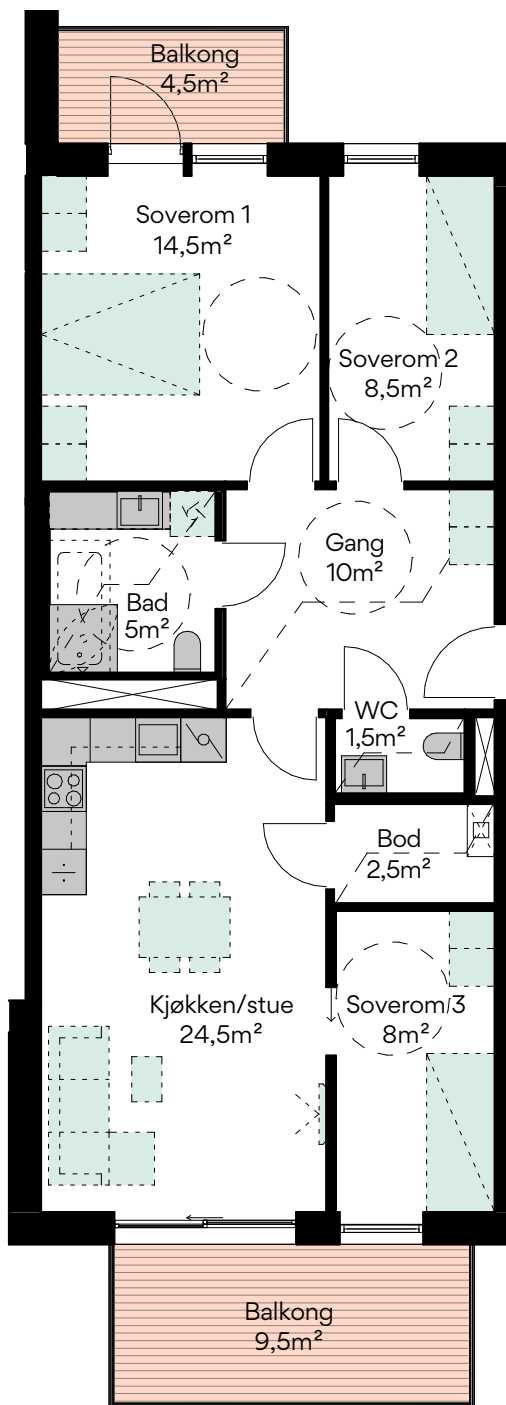
ROM
4

AREAL BRA
82,5 KVM

P-ROM
77 KVM

BALKONG
9,5 KVM + 4,5 KVM

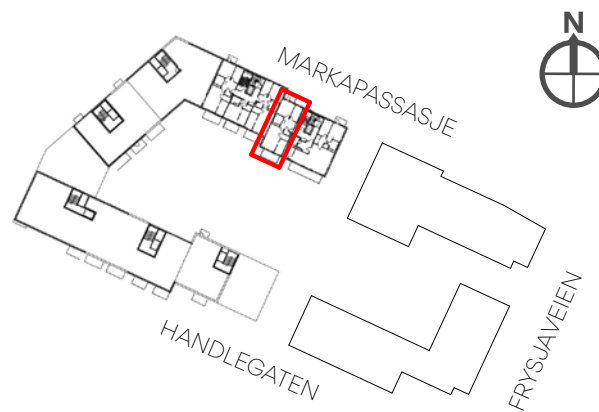
HUS
C3



0 1 2 3 4 5m
Målestokk 1:100



FASADE GÅRDSROM MOT SYD



4-roms

LEILIGHET
2044

PLAN
2

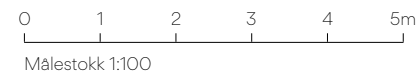
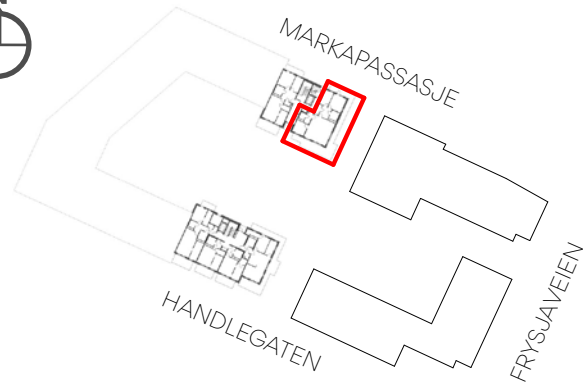
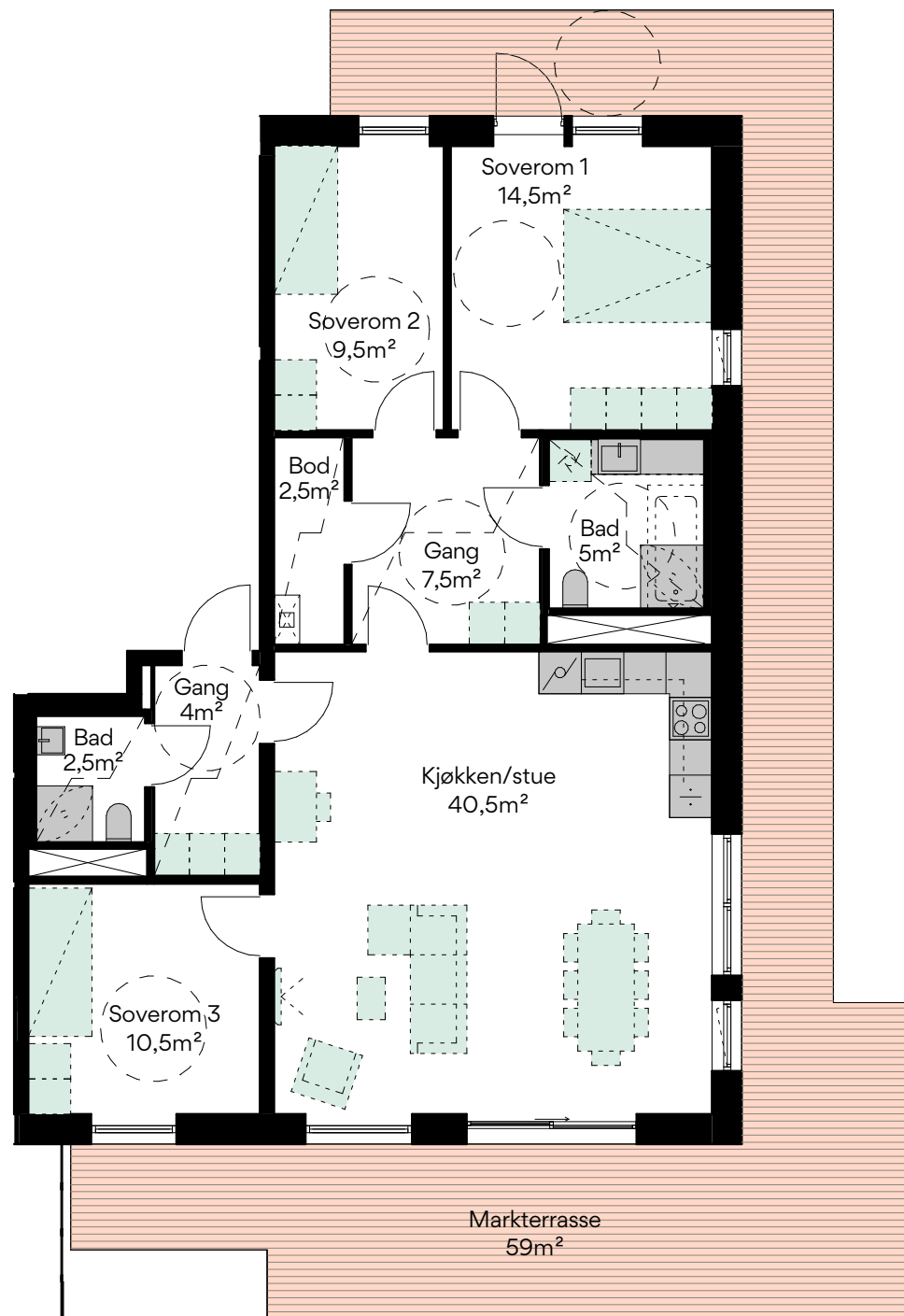
ROM
4

AREAL BRA
106 KVM

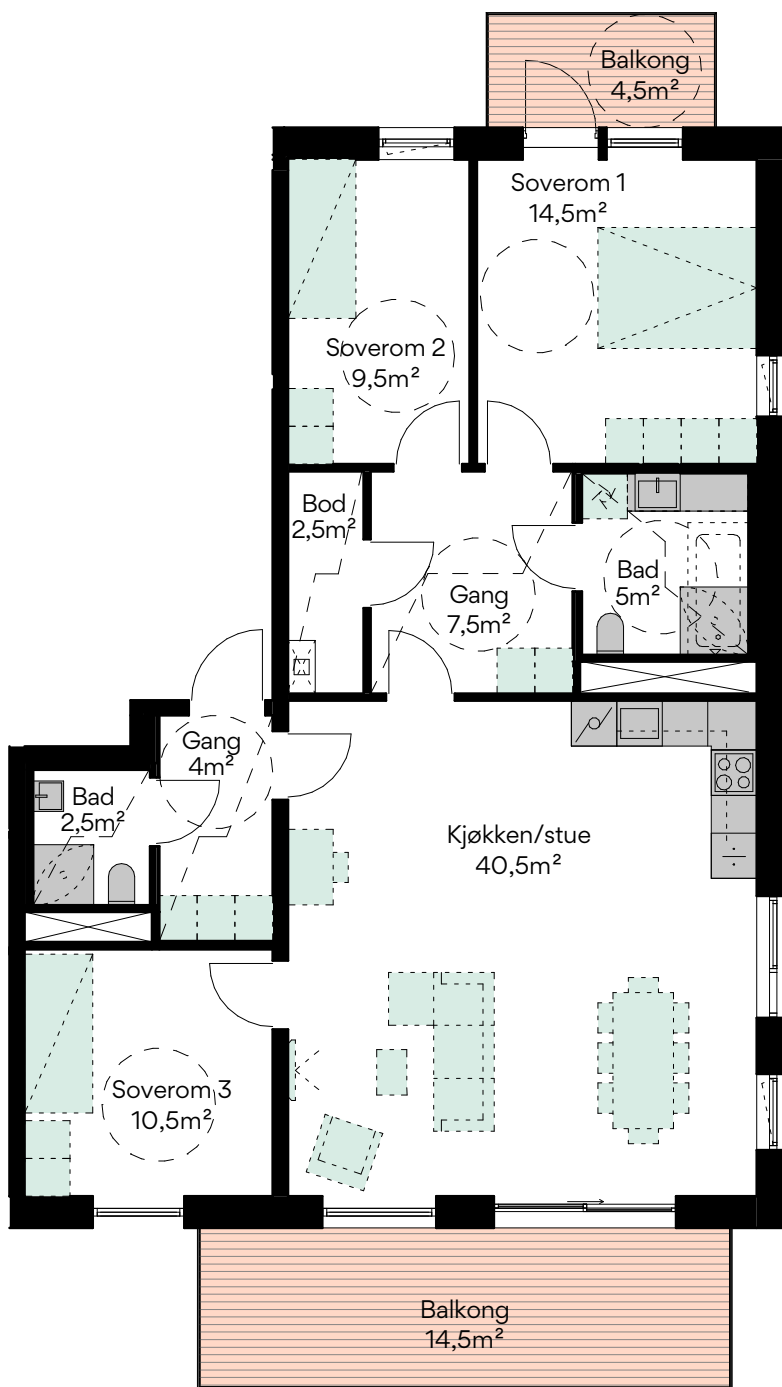
P-ROM
100 KVM

MARKTERRASSE
59 KVM

HUS
C3



FASADE GÅRDSROM MOT SYD



4-roms

LEILIGHET
3044

PLAN
3

ROM
4

AREAL BRA
106 KVM

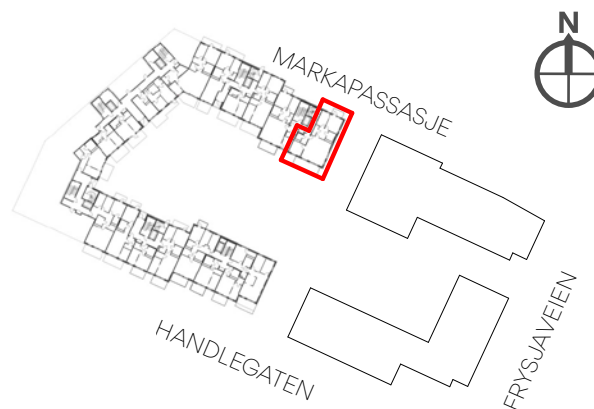
P-ROM
100 KVM

BALKONG
14,5 KVM + 4,5 KVM

HUS
C3



FASADE GÅRDSROM MOT SYD



4-roms

LEILIGHET
4044

PLAN
2

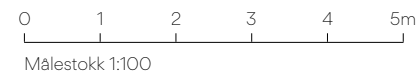
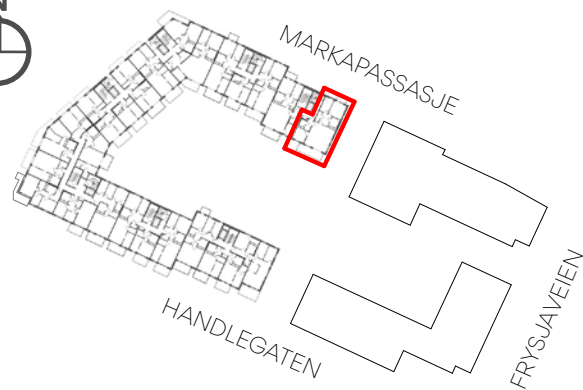
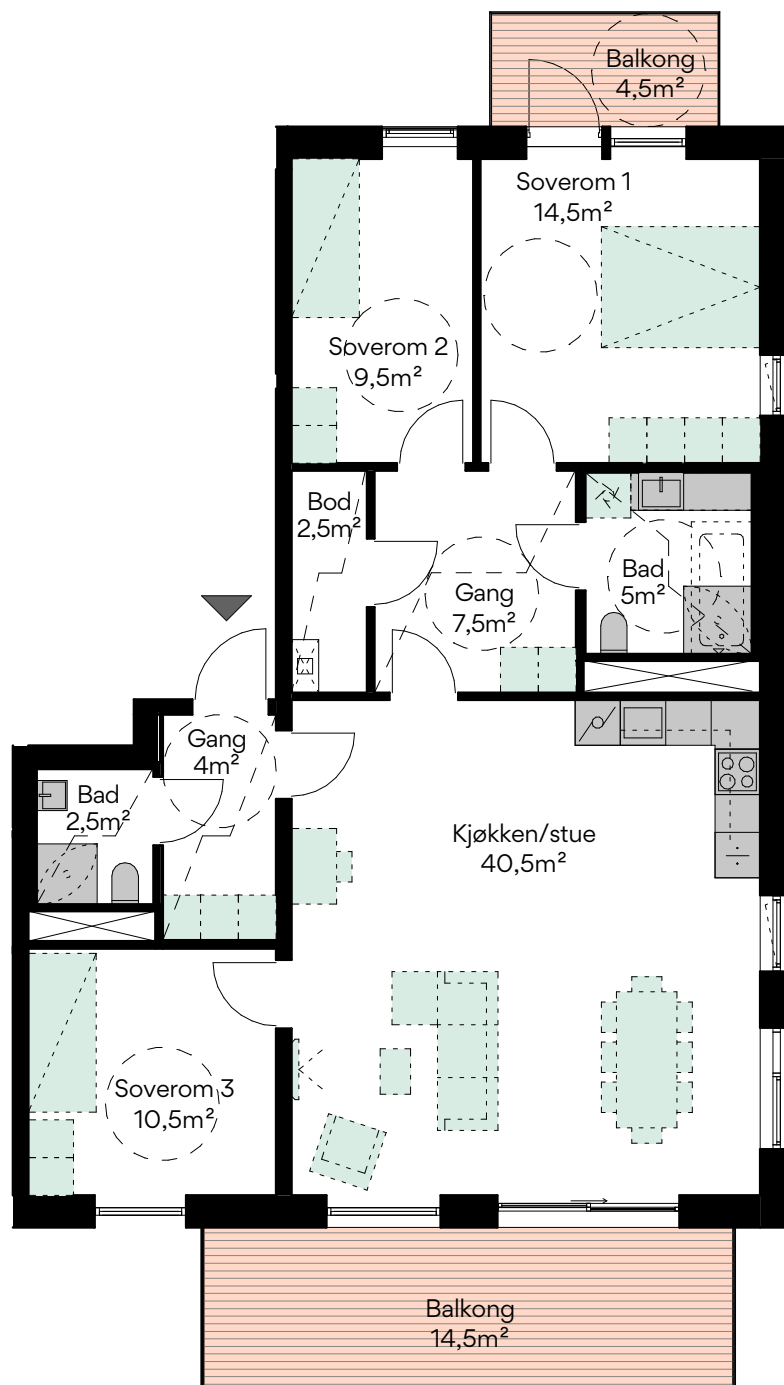
ROM
4

AREAL BRA
106 KVM

P-ROM
100 KVM

BALKONG
14,5 KVM + 4,5 KVM

HUS
C3



FASADE GÅRDSROM MOT SYD

4-roms

LEILIGHET
3044

PLAN
3

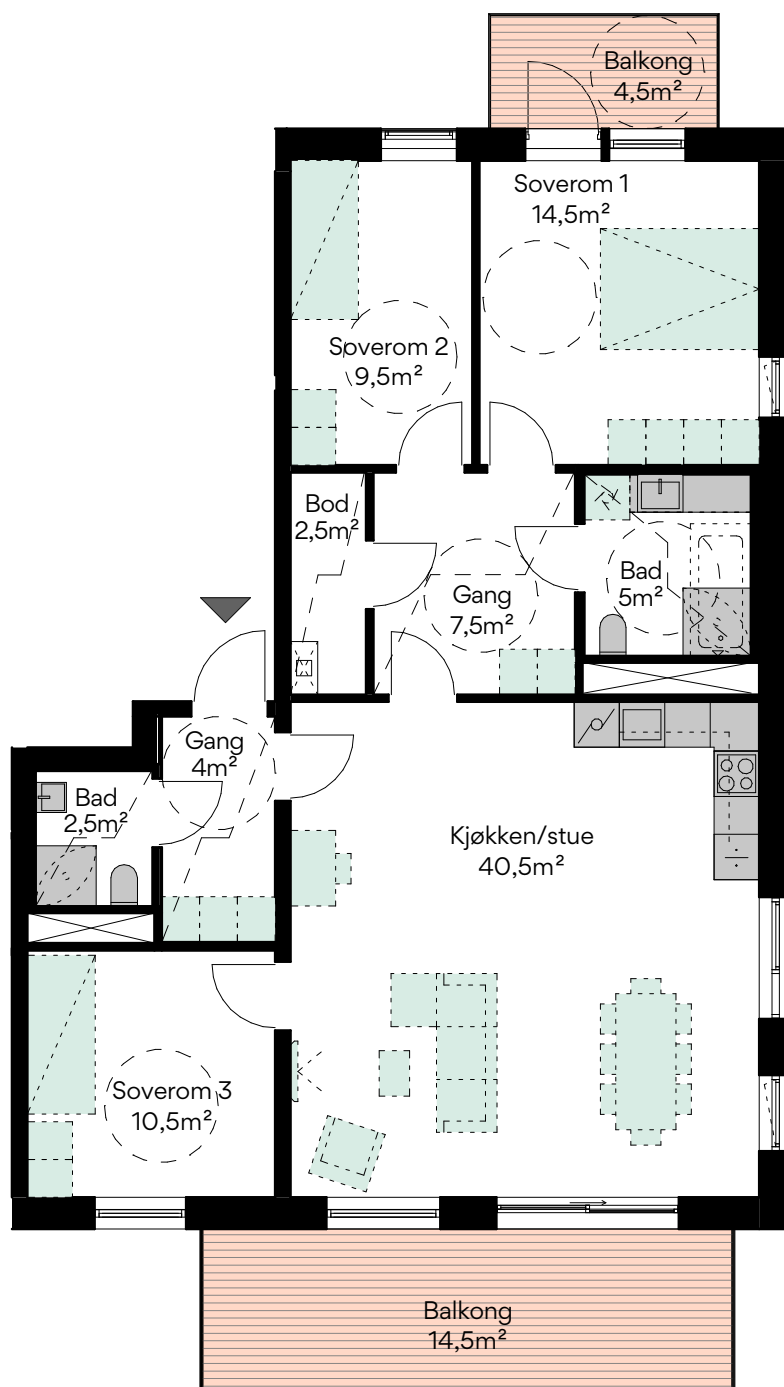
ROM
4

AREAL BRA
106 KVM

P-ROM
100 KVM

BALKONG
14,5 KVM + 4,5 KVM

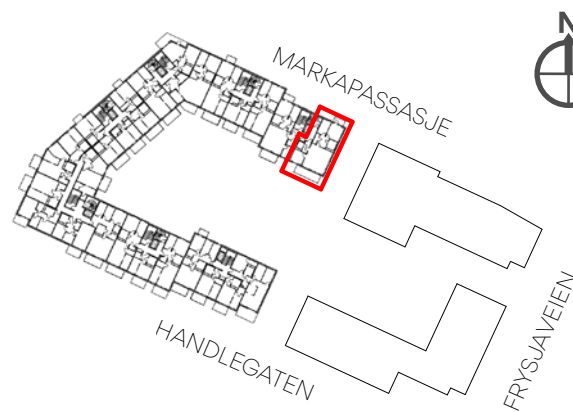
HUS
C3



0 1 2 3 4 5m
Målestokk 1:100



FASADE GÅRDSROM MOT SYD



4-roms

LEILIGHET
6044

PLAN
6

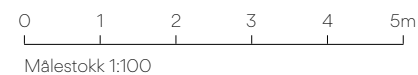
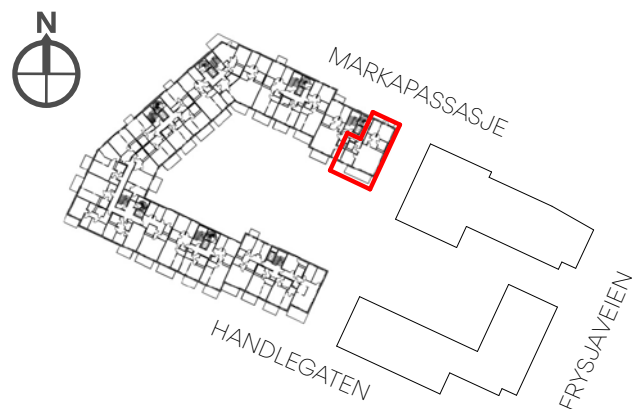
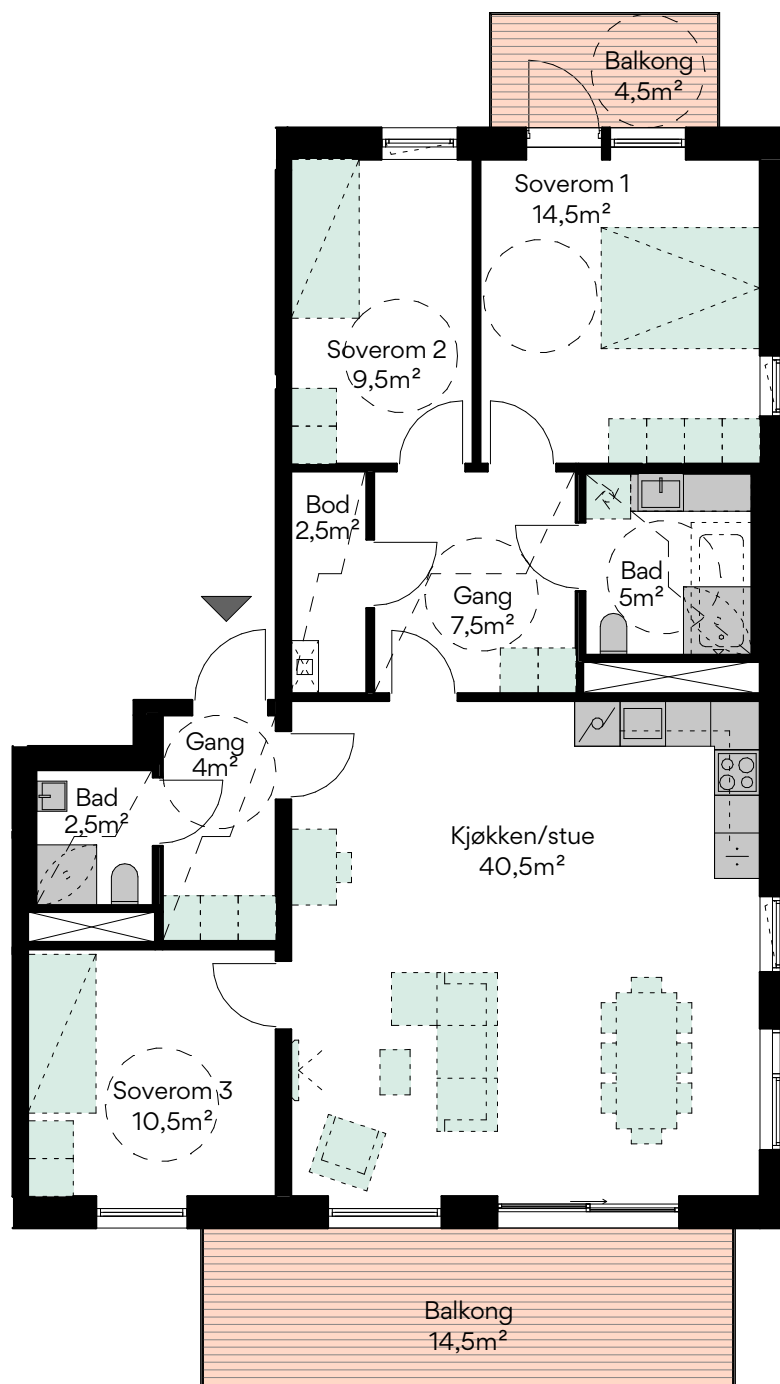
ROM
4

AREAL BRA
106 KVM

P-ROM
100 KVM

BALKONG
14,5 KVM + 4,5 KVM

HUS
C3



FASADE GÅRDSROM MOT SYD

4-roms

LEILIGHET
7044, 8044

PLAN
7,8

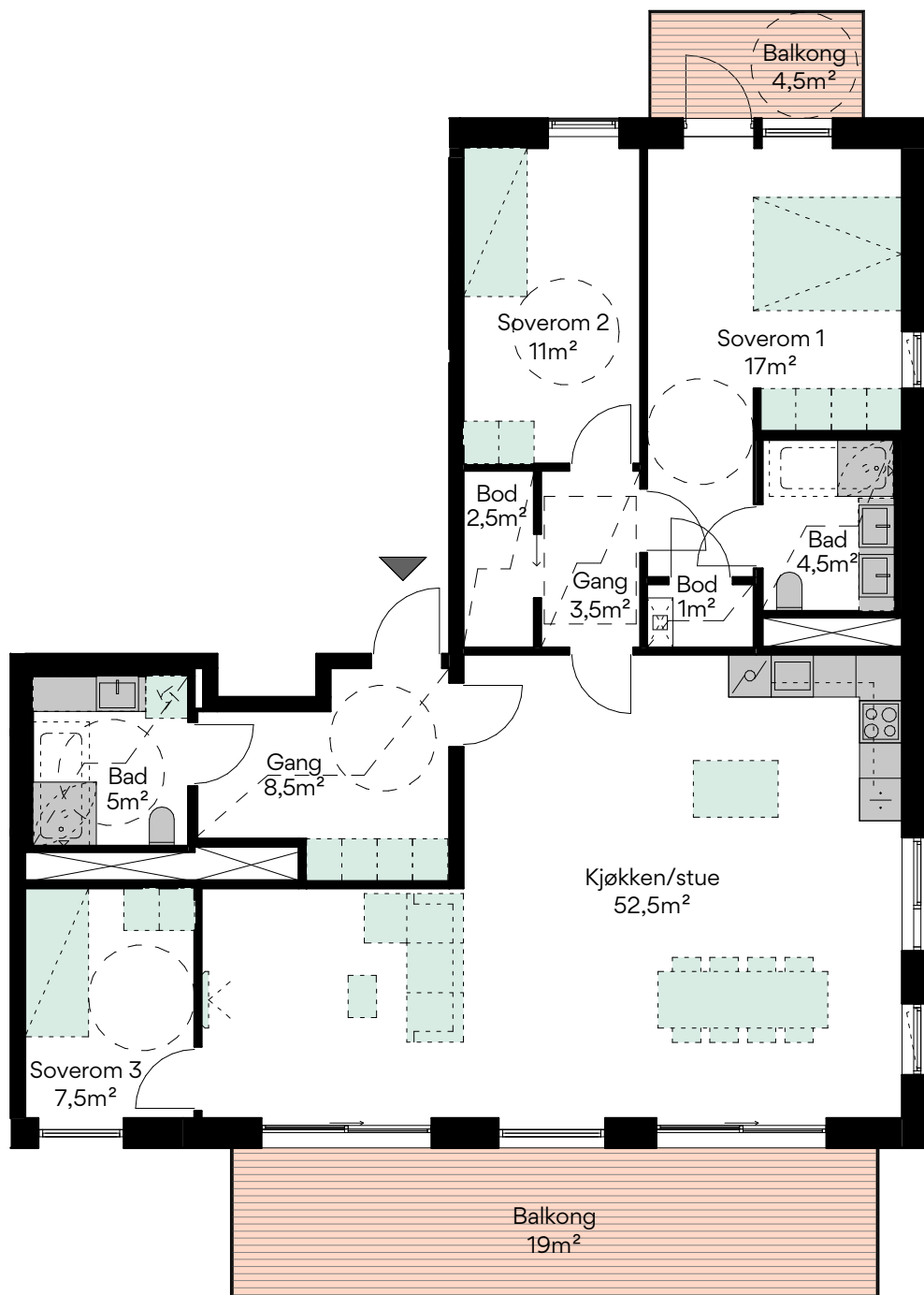
ROM
4

AREAL BRA
123,5 KVM

P-ROM
115 KVM

BALKONG
19 KVM + 4,5 KVM

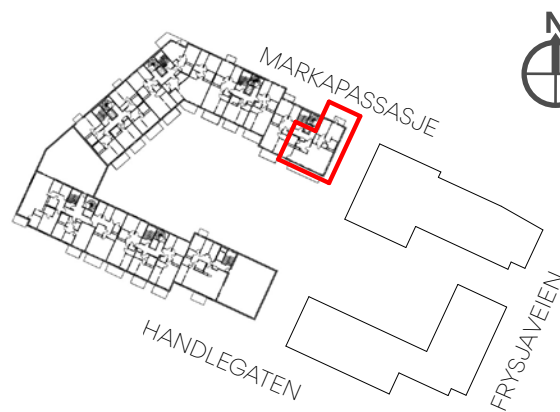
HUS
C3



0 1 2 3 4 5m
Målestokk 1:100



FASADE GÅRDSROM MOT SYD



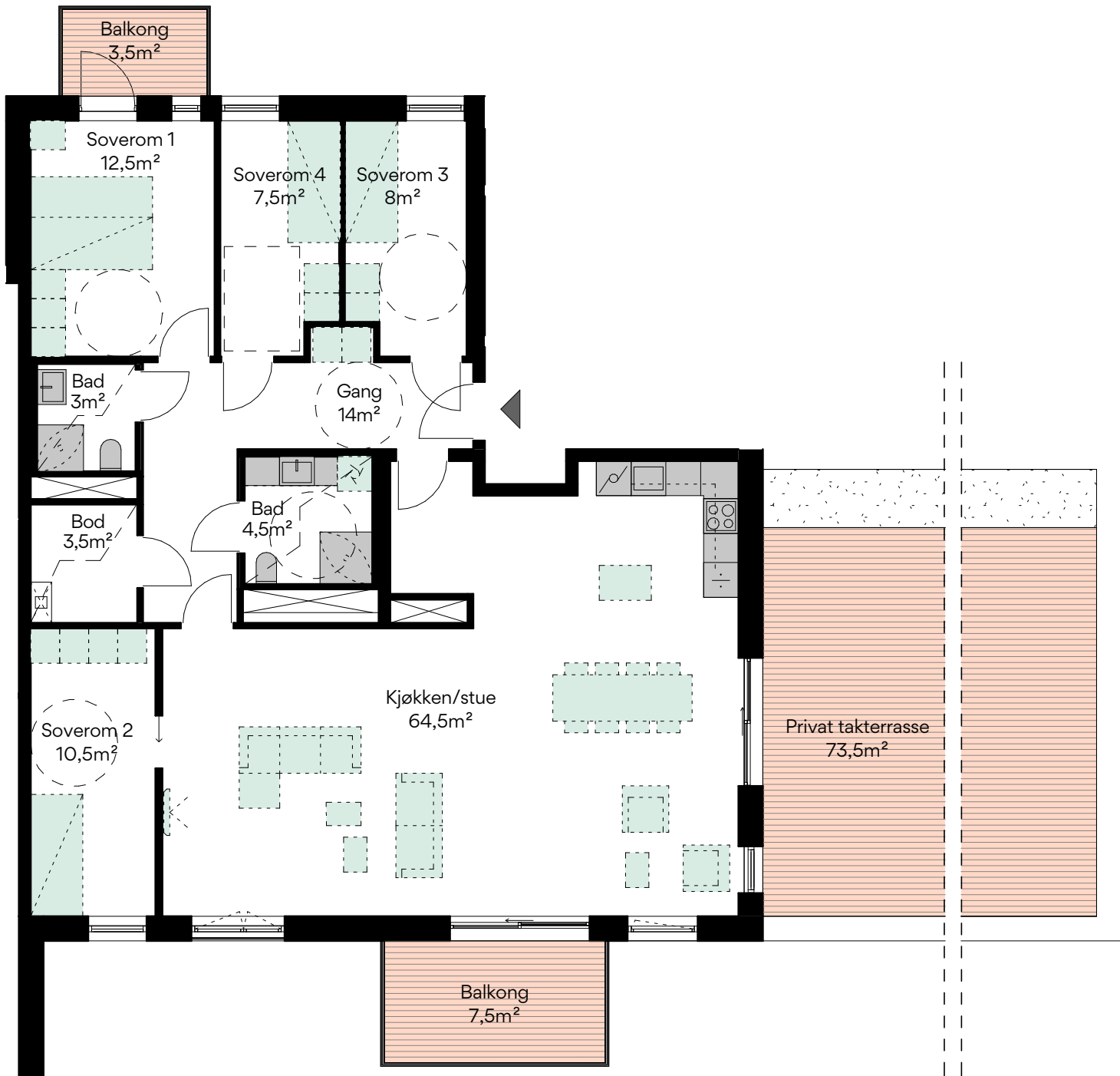




5

R O M S

Leilighet 7021



5-roms

LEILIGHET
7021

PLAN
7

ROM
5

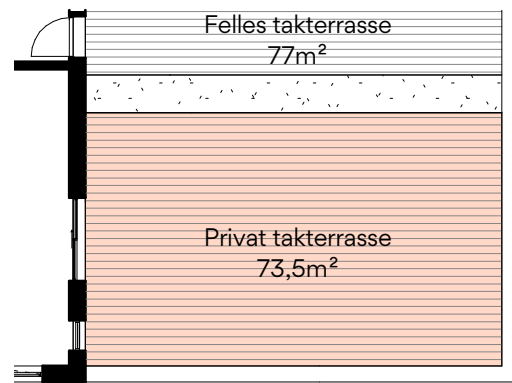
AREAL BRA
139,5 KVM

P-ROM
131,5 KVM

BALKONG
7,5 KVM + 3,5 KVM

PRIVAT TAKTERRASSE
73,5 KVM

HUS
C3

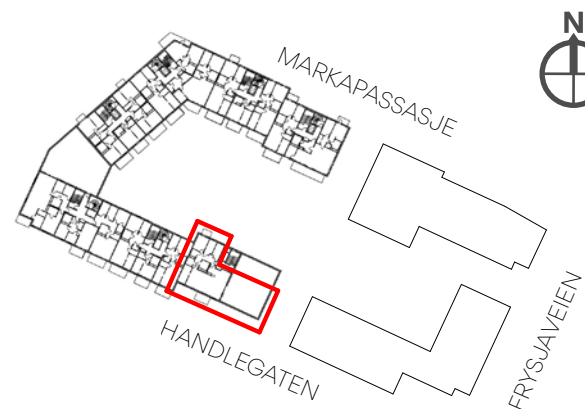


MÅL: 1: 200

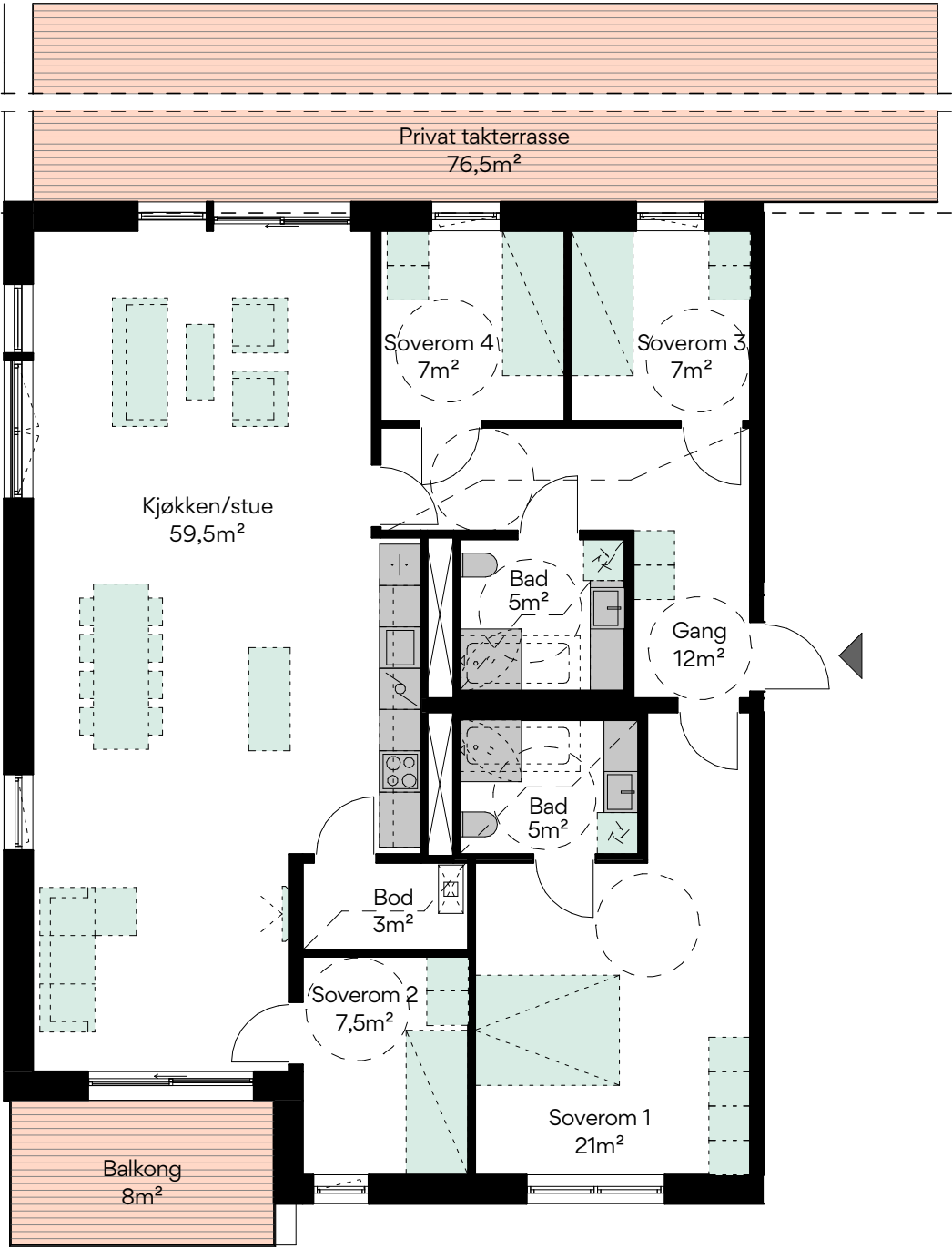
0 1 2 3 4 5m
Målestokk 1:100



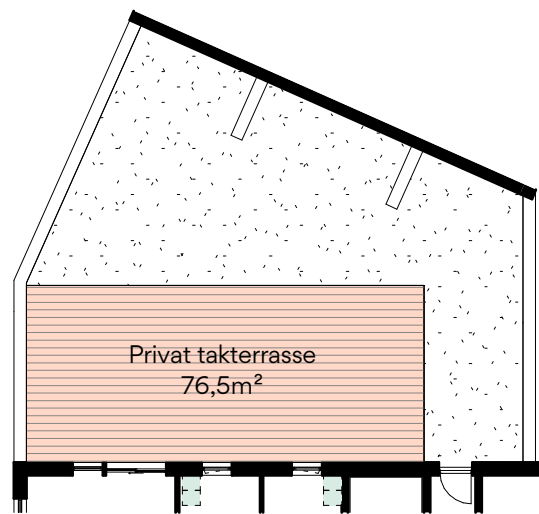
FASADE MOT SYD



Leilighet 7027



5-roms



MÅL: 1 : 250

LEILIGHET
7027

PLAN
7

ROM
5

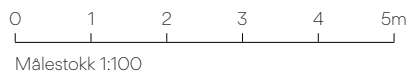
AREAL BRA
137 KVM

P-ROM
130,5 KVM

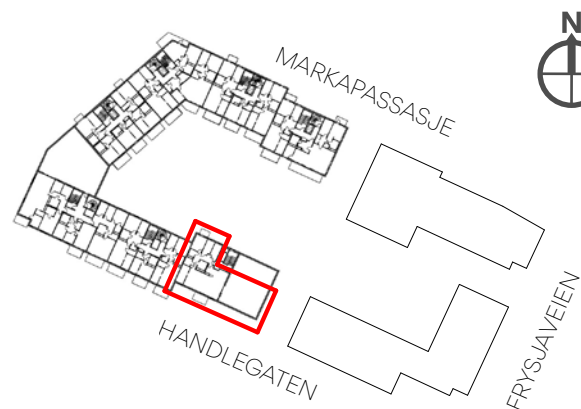
BALKONG
8 KVM

PRIVAT TAKTERRASSE
76,5 KVM

HUS
C3



FASADE MOT SYD



Eier og prosjektselger:



Thomas Rasmussen
Tlf: 48 60 33 66
E-post: thomas.rasmussen@obos.no

Eskil Flakstad
Tlf: 928 07 749
E-post: eskil.flakstad@obos.no

Velkommen til vårt visningssenter i Frysjaveien 40, 0884 Oslo.
Følg med på obos.no/frysja for åpningstider.

Besøksadresse:

Ulvenveien 82, 0581 Oslo

Postadresse:

Postboks 6666 St. Olavs Plass, 0129 Oslo
Tlf.: 22 86 55 00
E-post: obos@obos.no
www.obos.no

Eier og utvikler:

STOR OSLO EIENDOM

Besøksadresse:

Kirkegata 17, 0153 Oslo

Postadresse:

Postboks 606, 0106 Oslo
Tlf.: 21 60 52 20
E-post: post@soeiendom.no
www.soeiendom.no

Arkitekt:

www.a-lab.no

Idé og design:

Schjærven Reklamebyrå AS

3D:

www.oxivisuals.no

Foto:

Aki Tolentino/unsplash.com og Getty Images



