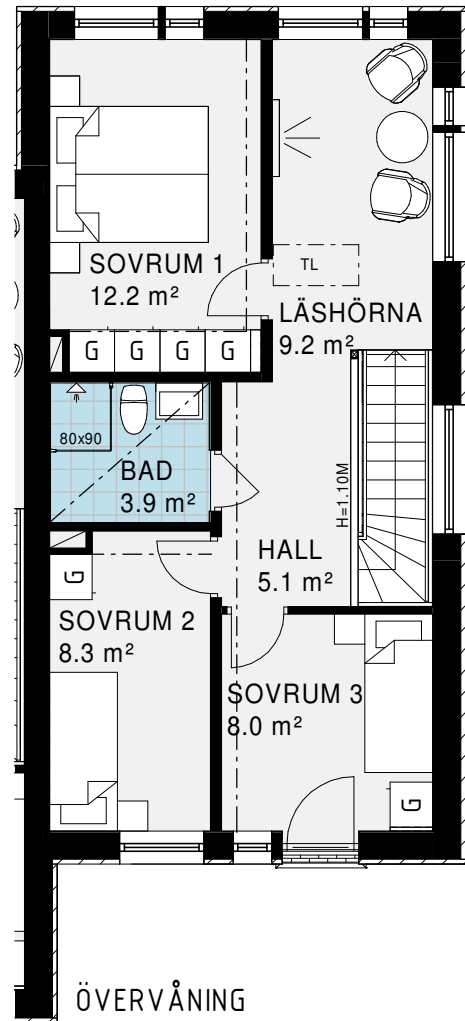
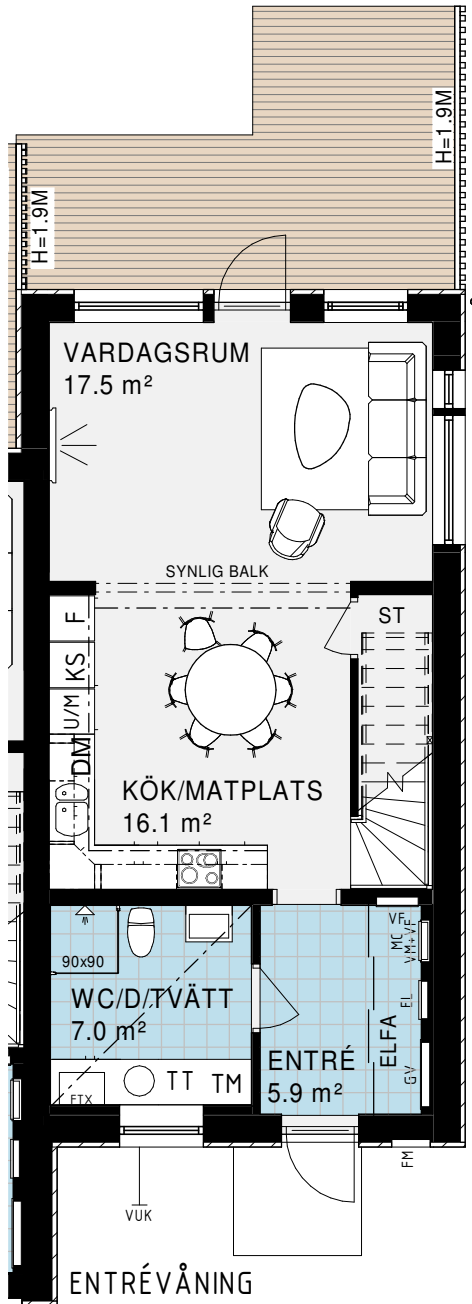


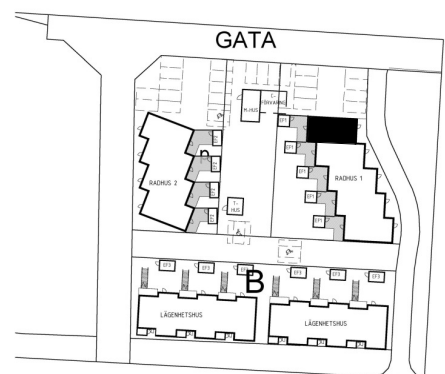
# Bofaktablad

Avser bostad: 01-1005

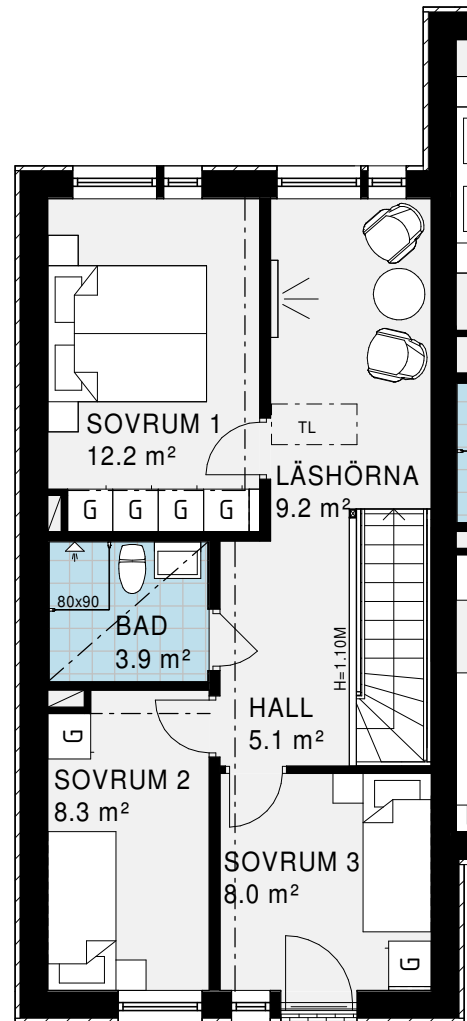
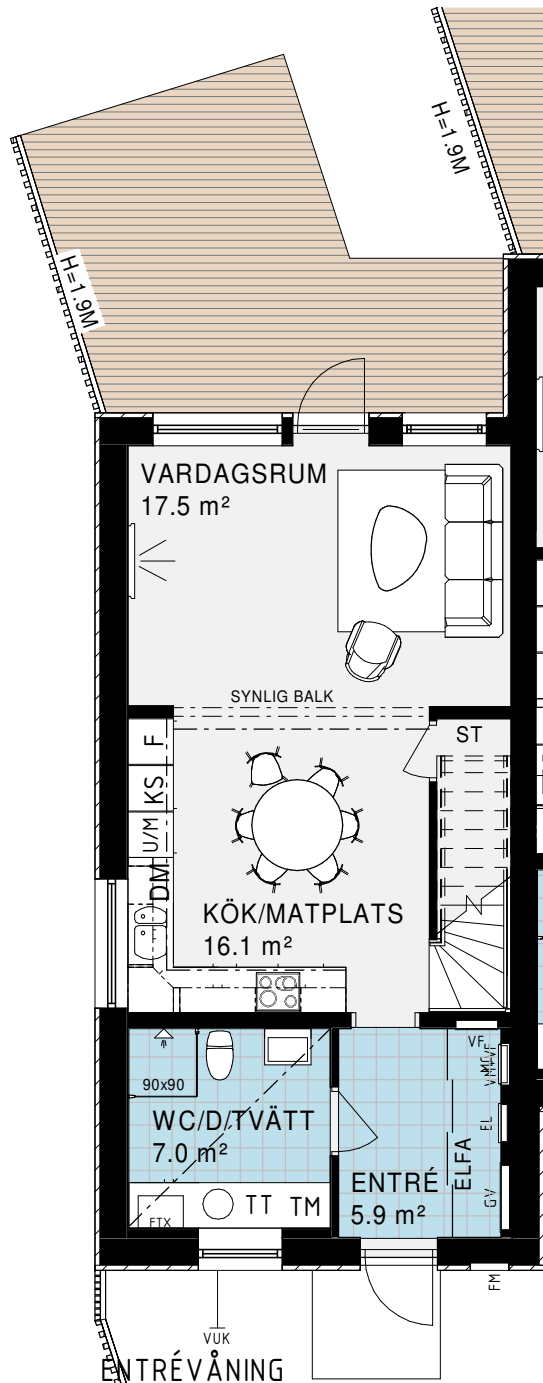


## FÖRKLARINGAR:

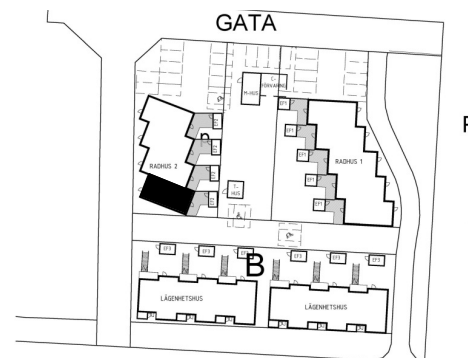
- |                      |                          |
|----------------------|--------------------------|
| ST STÅDSKÅP          | SCHAKT                   |
| KAPPHYLLA            | G GARDEROB               |
| DM DISKMASKIN        |                          |
| SPIS                 | U/M UGN/MICRO I HÖGSKÅP  |
| K/S KYL/SVAL         | F FRYSS                  |
| TM TVÄTTMASKIN       | TT TORKTUMLARE           |
| FJÄRRVÄRMEMODUL      | FTX VENTILATIONSAGGREGAT |
| TL INVÄNDIG TAKLUCKA |                          |



VI FÖRBEHÅLLER OSS RÄTTEN FÖR KONSTRUKTIONSÄNDRINGAR.

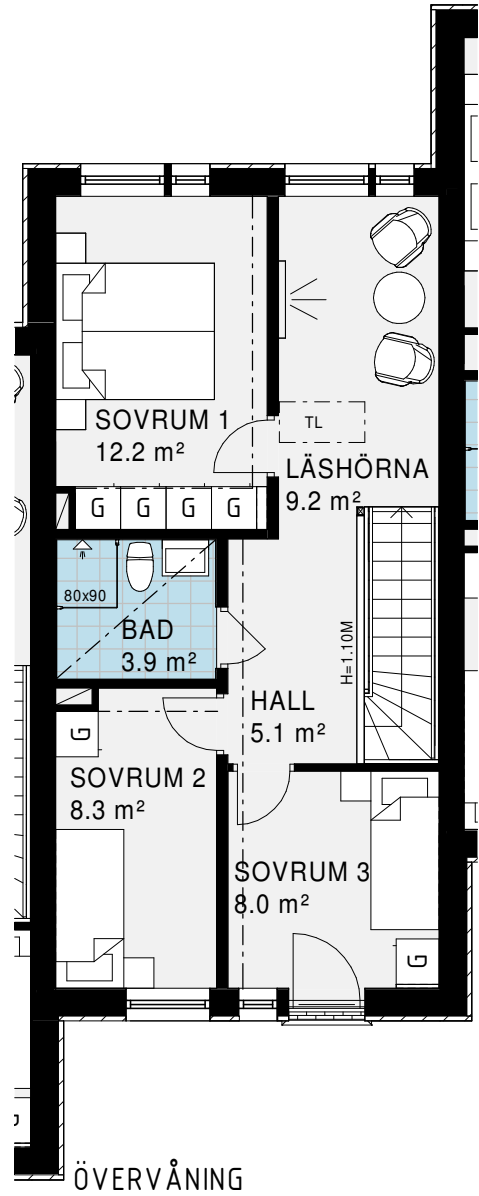
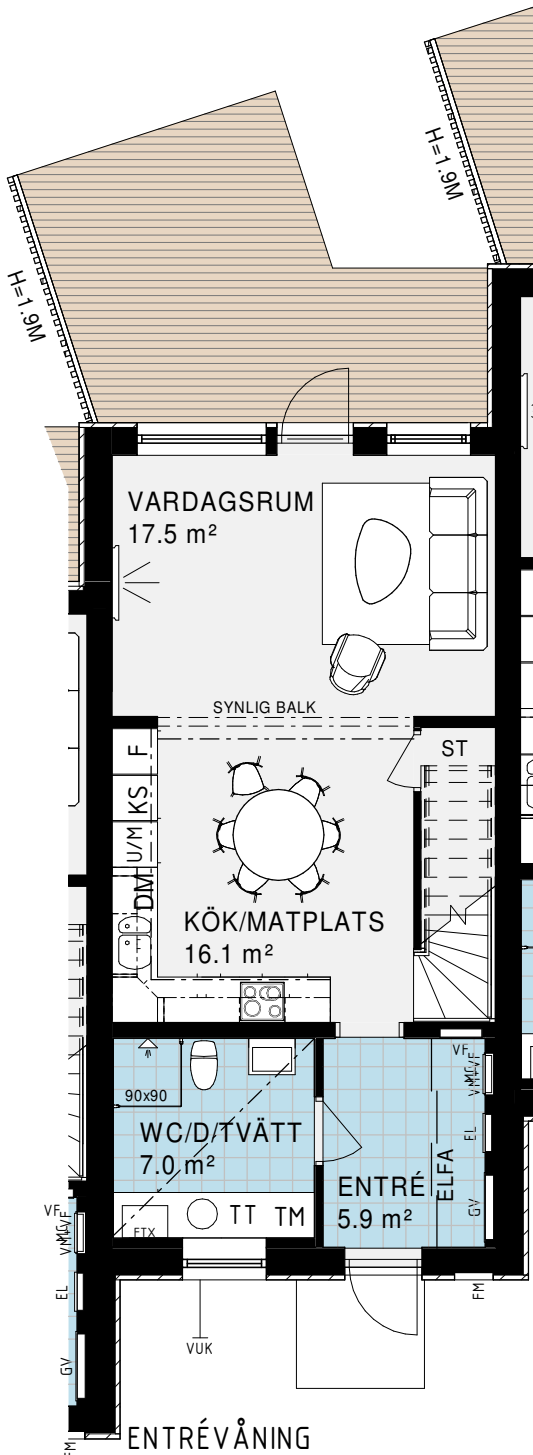
**FÖRKLARINGAR:**

 ST	STÅDSKÅP	 SCHAKT
 KAPPHYLLA		 G
 DM	DISKMASKIN	 U/M
 SPIS		 F
 K/S	KYL/SVAL	 TM
 TVÄTTMASKIN		 TT
 FJÄRRVÄRMEMODUL		 FTX
 INVÄNDIG TAKLUCKA		



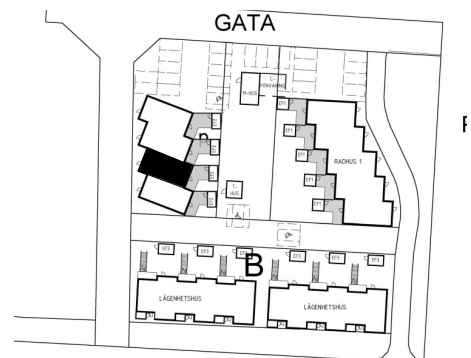
# Bofaktablad

Avser bostad: 02-1002



## FÖRKLARINGAR:

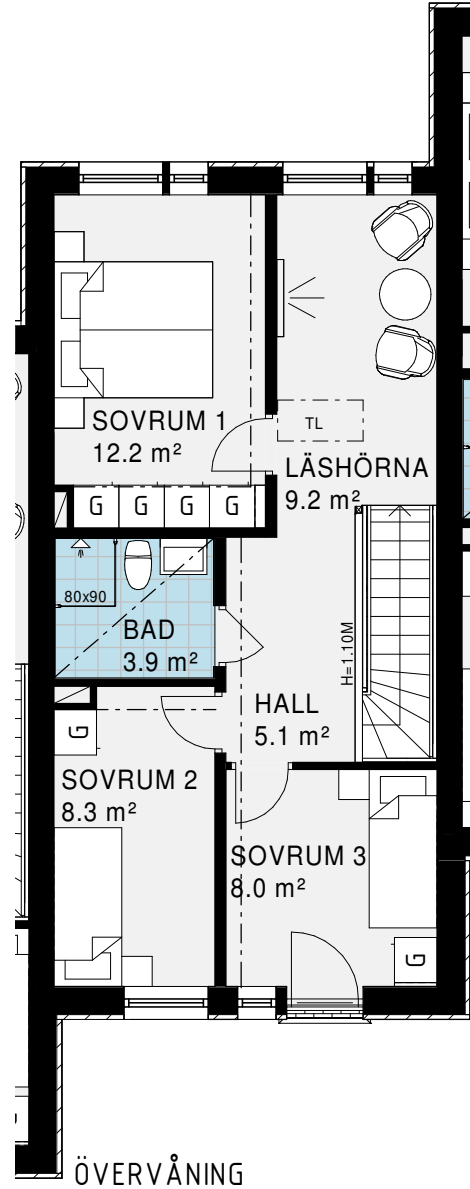
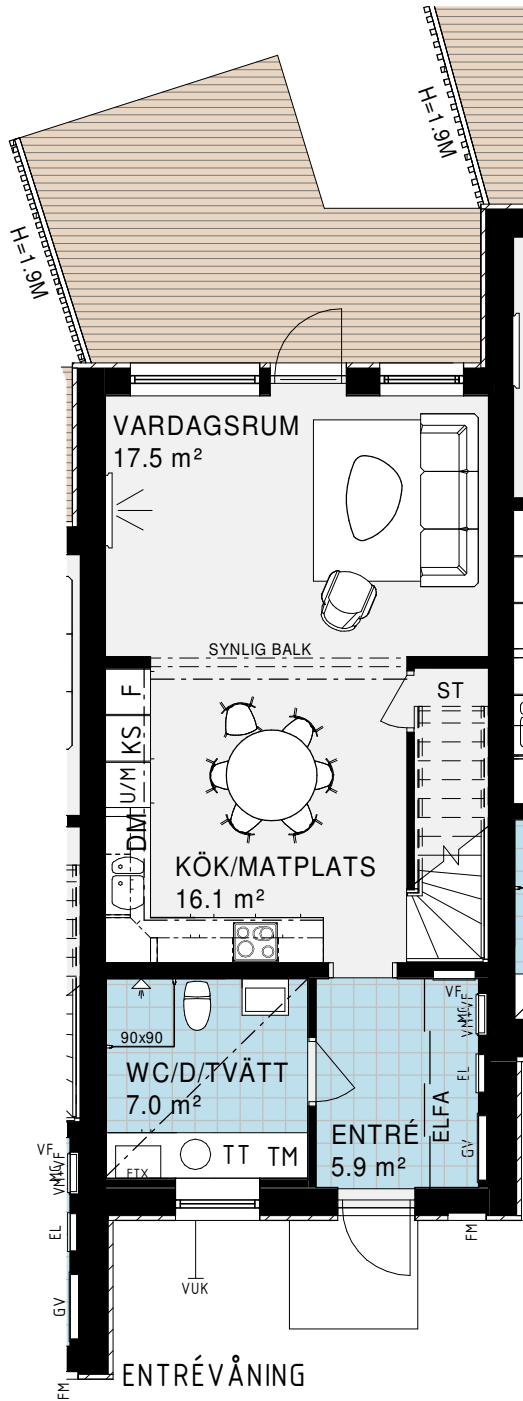
- |                 |                      |                     |
|-----------------|----------------------|---------------------|
| ST              | STÅDSKÅP             | SCHAKT              |
| KAPPHYLLA       |                      | G                   |
| DM              | DISKMASKIN           | U/M                 |
| SPIS            |                      | UGN/MICRO I HÖGSKÅP |
| K/S             | KYL/SVAL             | F                   |
| TM              | TVÄTTMASKIN          | TT                  |
| FJÄRRVÄRMEMODUL |                      | TORKTUMLARE         |
| FTX             | VENTILATIONSAGGREGAT |                     |
| TL              | INVÄNDIG TAKLUCKA    |                     |



VI FÖRBEHÅLLER OSS RÄTTEN FÖR KONSTRUKTIONSÄNDRINGAR.

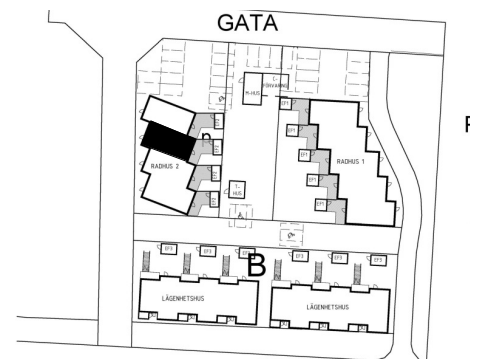
# Bofaktablad

Avser bostad: 02-1003

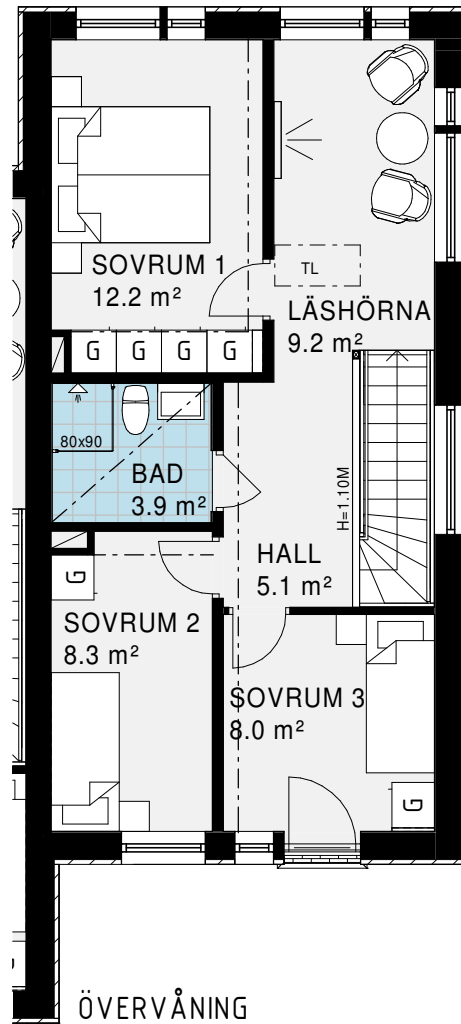
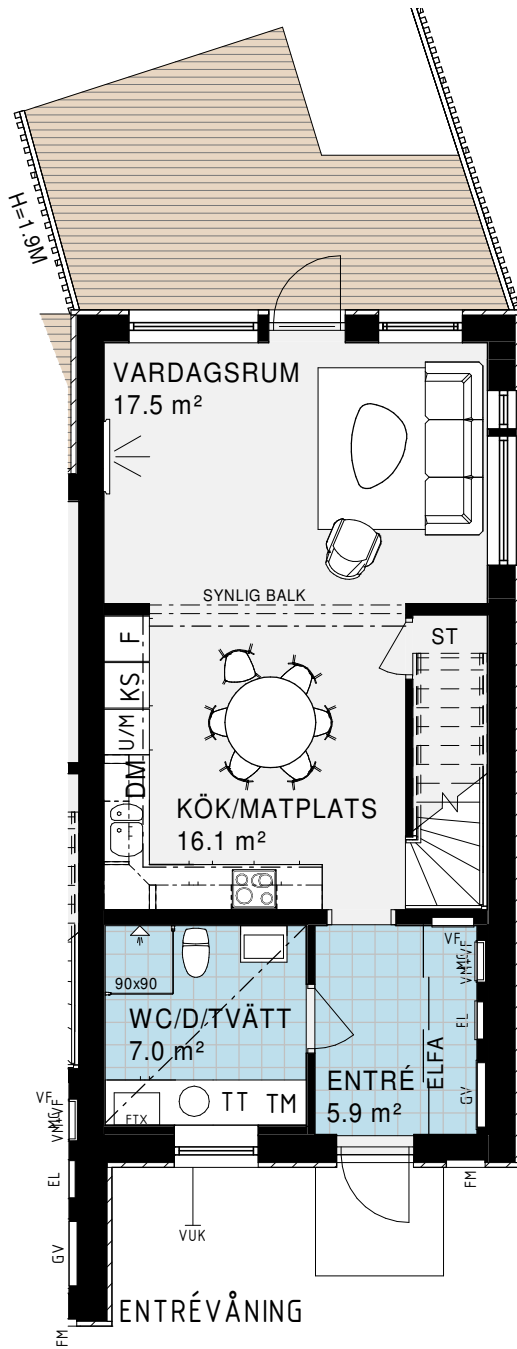


## FÖRKLARINGAR:

- |                 |                          |
|-----------------|--------------------------|
| ST STÅDSKÅP     | SCHAKT                   |
| KAPPHYLLA       | G GARDEROB               |
| DM DISKMASKIN   | U/M UGN/MICRO I HÖGSKÅP  |
| SPIS            | F FRYS                   |
| K/S KYL/SVAL    | TT TORKTUMLARE           |
| TM TVÄTTMASKIN  | FTX VENTILATIONSAGGREGAT |
| FJÄRRVÄRMEMODUL | TL INVÄNDIG TAKLUCKA     |

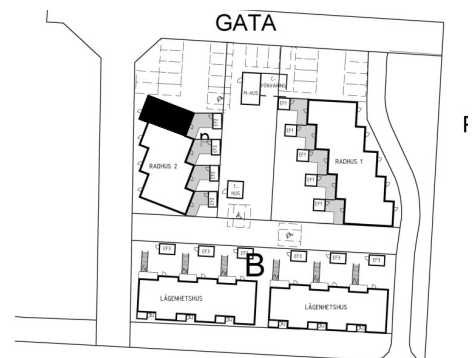


VI FÖRBEHÅLLER OSS RÄTTEN FÖR KONSTRUKTIONSÄNDRINGAR.



## FÖRKLARINGAR:

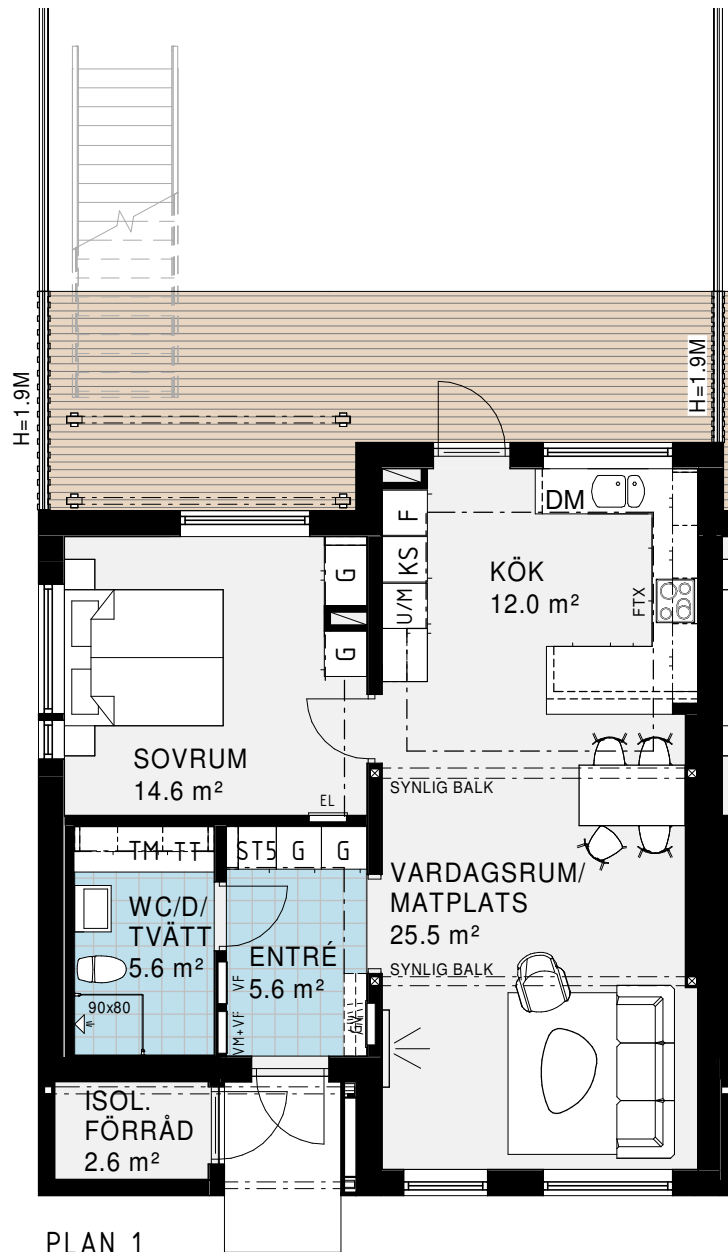
- |                      |                          |
|----------------------|--------------------------|
| ST STÅDSKÅP          | SCHAKT                   |
| KAPPHYLLA            | G GARDEROB               |
| DM DISKMASKIN        |                          |
| SPIS                 | U/M UGN/MICRO I HÖGSKÅP  |
| K/S KYL/SVAL         | F FRYS                   |
| TM TVÄTTMASKIN       | TT TORKTUMLARE           |
| FJÄRRVÄRMEMODUL      | FTX VENTILATIONSAGGREGAT |
| TL INVÄNDIG TAKLUCKA |                          |



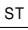

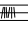
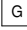

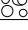
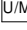
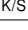

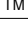


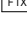
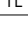
VI FÖRBEHÅLLER OSS RÄTTEN FÖR KONSTRUKTIONSÄNDRINGAR.

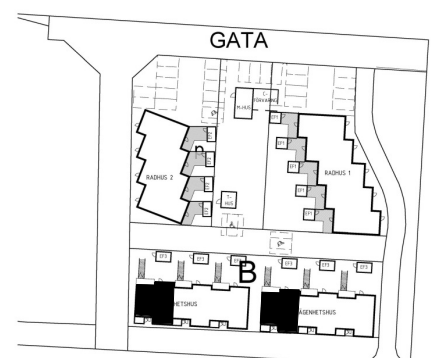
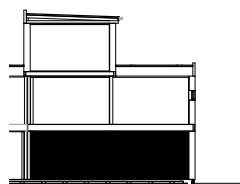
# Bofaktablad

Avser bostad: 03-1001 & 04-1001



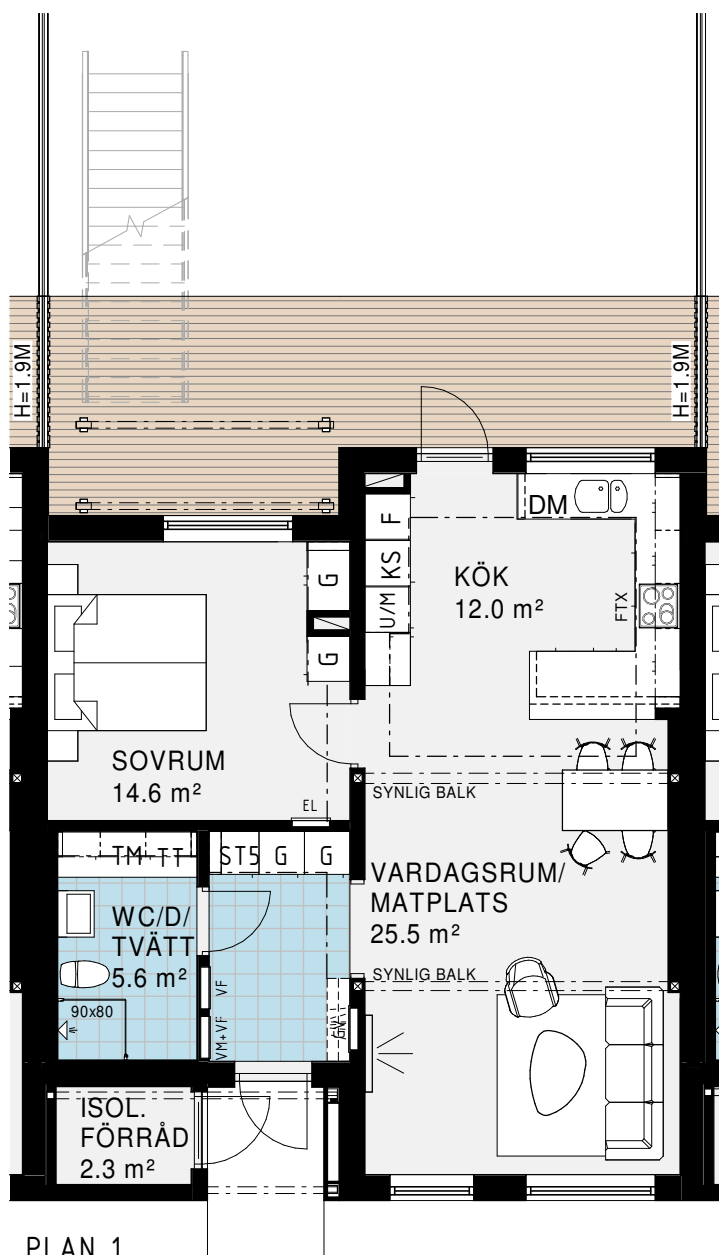
## FÖRKLARINGAR:

 ST	STÅDSKÅP	 SCHAKT
 KAPPHYLLA		 G
 DM	DISKMASKIN	 L
 SPIS		 U/M
 K/S	KYL/SVAL	 F
 TM	TVÄTTMASKIN	 TT
 FJÄRRVÄRMEMODUL		 FTX
 TL	INVÄNDIG TAKLUCKA	



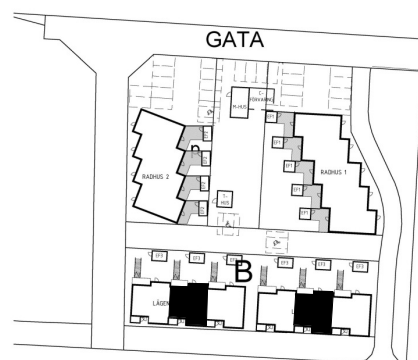
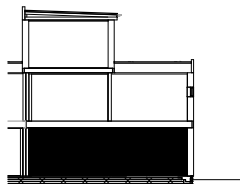
# Bofaktablad

Avser bostad: 03-1002 & 04-1002



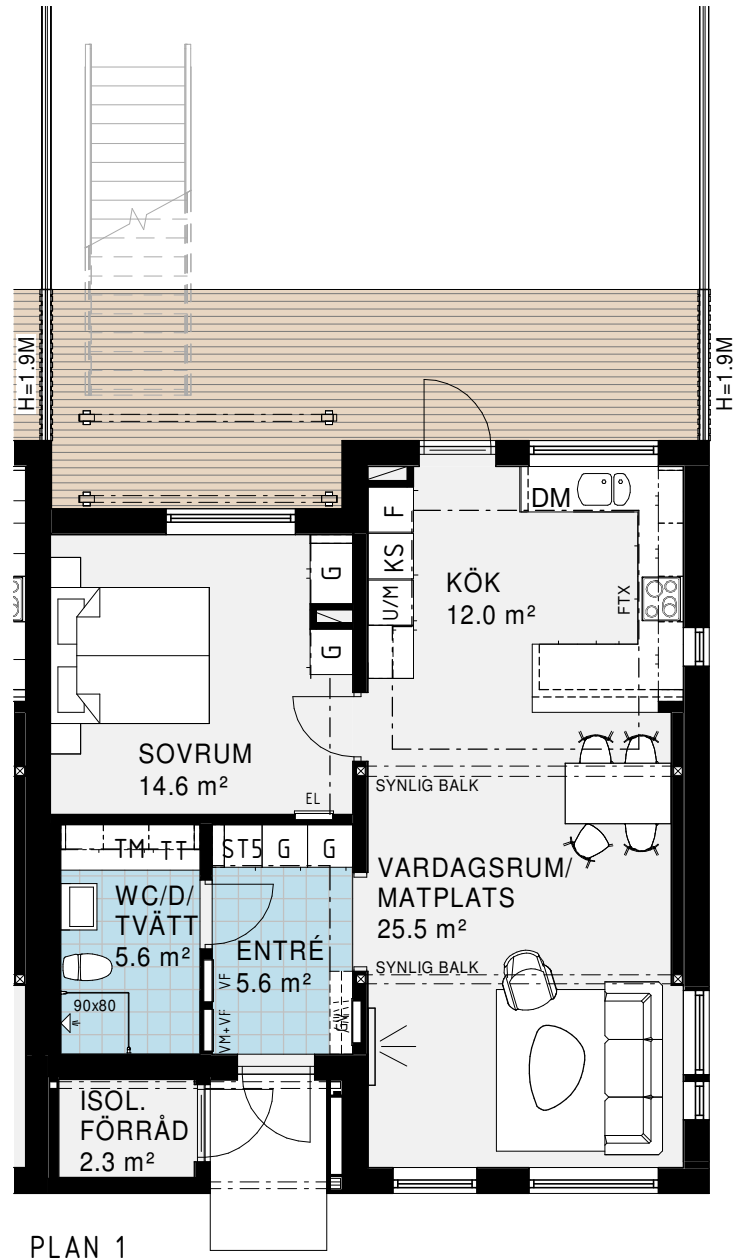
## FÖRKLARINGAR:

 ST	STÅDSKÅP	 SCHAKT
 KAPPHYLLA		 G
 DM	DISKMASKIN	 L
 SPIS		 U/M
 K/S	KYL/SVAL	 F
 TM	TVÄTTMASKIN	 TT
 F750	VÄRMEPUMP	
 TL	INVÄNDIG TAKLUCKA	



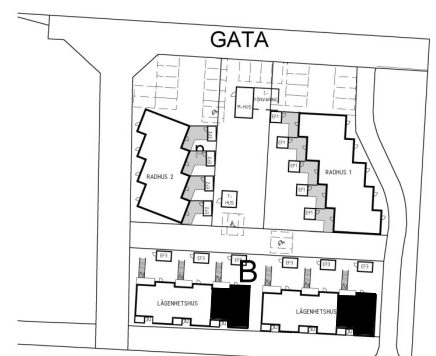
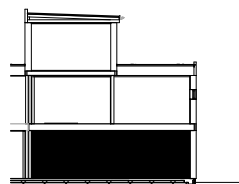
# Bofaktablad

Avser bostad: 03-1003 &amp; 04-1003



## FÖRKLARINGAR:

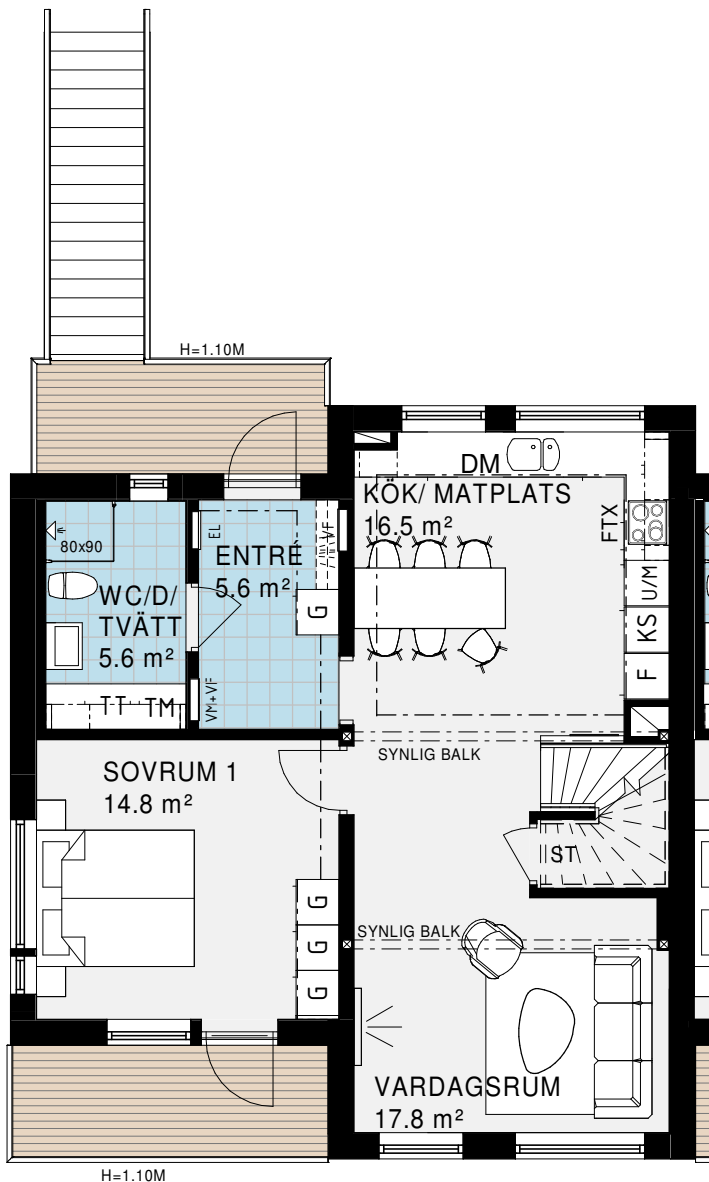
 ST	STÅDSKÅP	 SCHAKT
 KAPPHYLLA		 G
 DM	DISKMASKIN	 L
 SPIS		 U/M
 K/S	KYL/SVAL	 F
 TM	TVÄTTMASKIN	 TT
 F750	VÄRMEPUMP	
 TL	INVÄNDIG TAKLUCKA	



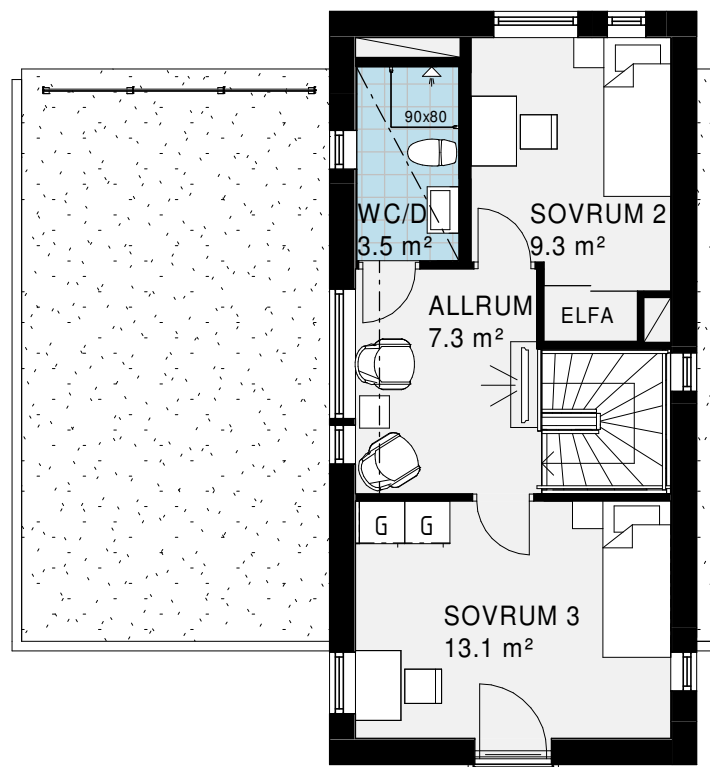


# Bofaktablad

Avser bostad: 03-1101 & 04-1101


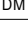
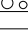
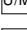




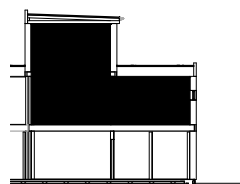
PLAN 2



PLAN 3

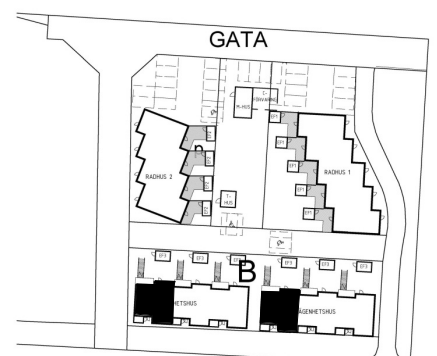
## FÖRKLARINGAR:

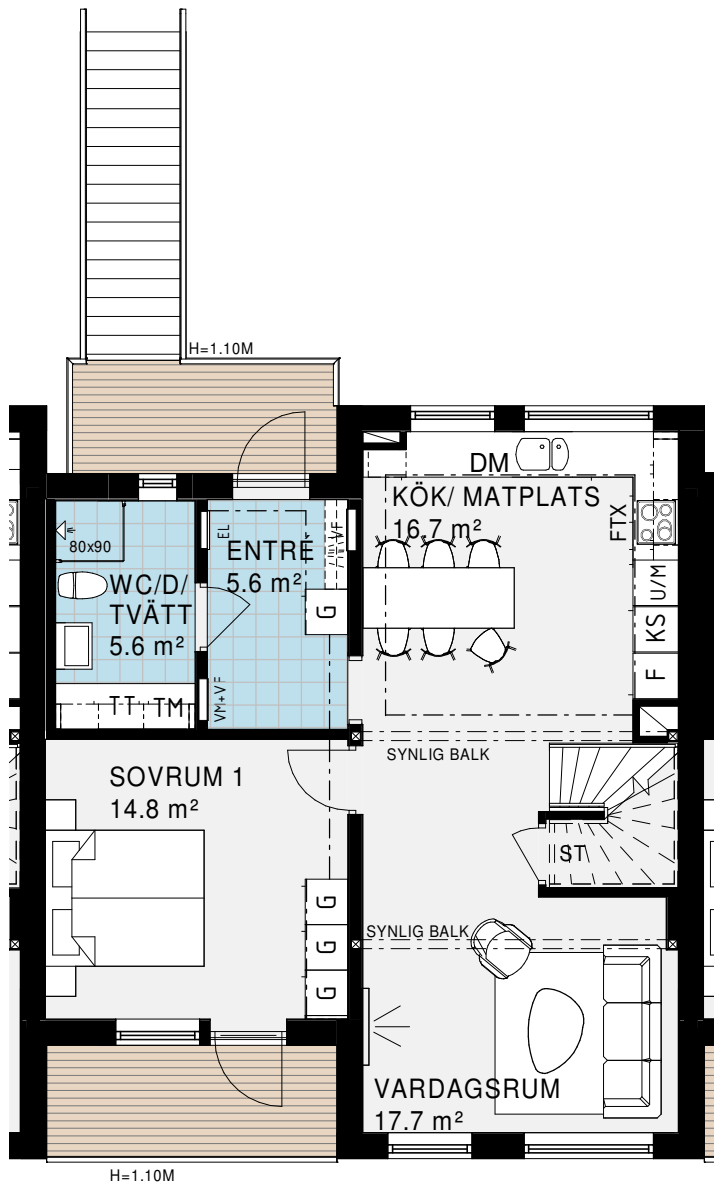
 ST	STÄDSKÅP	 SCHAKT
 KAPPHYLLA		 G
 DM	DISKMASKIN	 L
 SPIS		 U/M
 K/S	KYL/SVAL	 F
 TM	TVÅTTMASKIN	 TT
 FJÄRRVÄRMEMODUL		 FTX
 TL	INVÄNDIG TAKLUCKA	



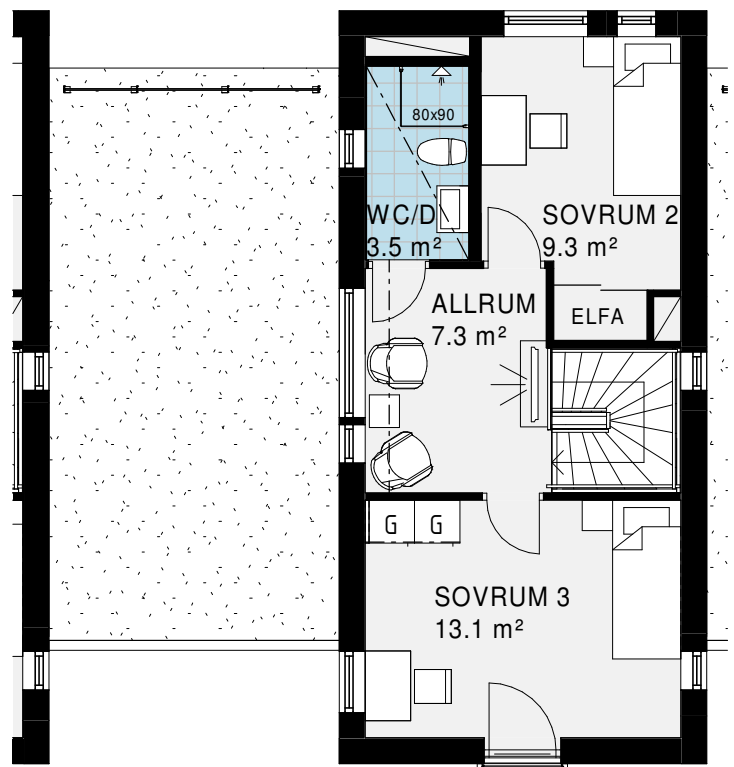
0 5 m

Skala 1:100





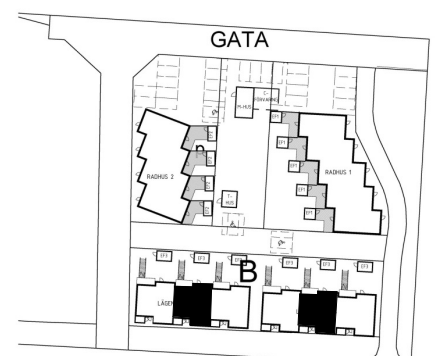
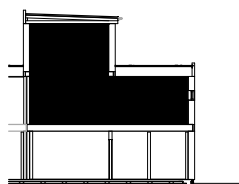
PLAN 2



PLAN 3

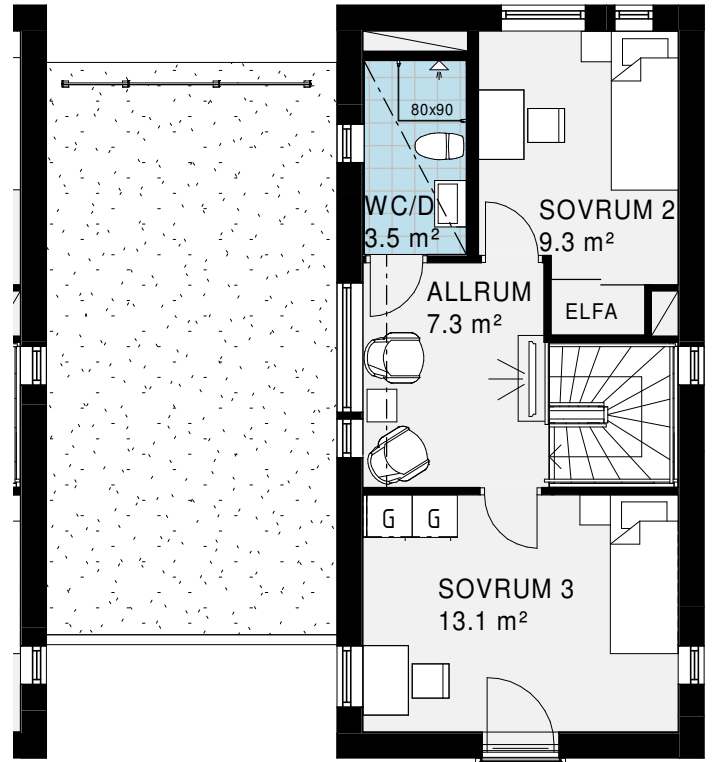
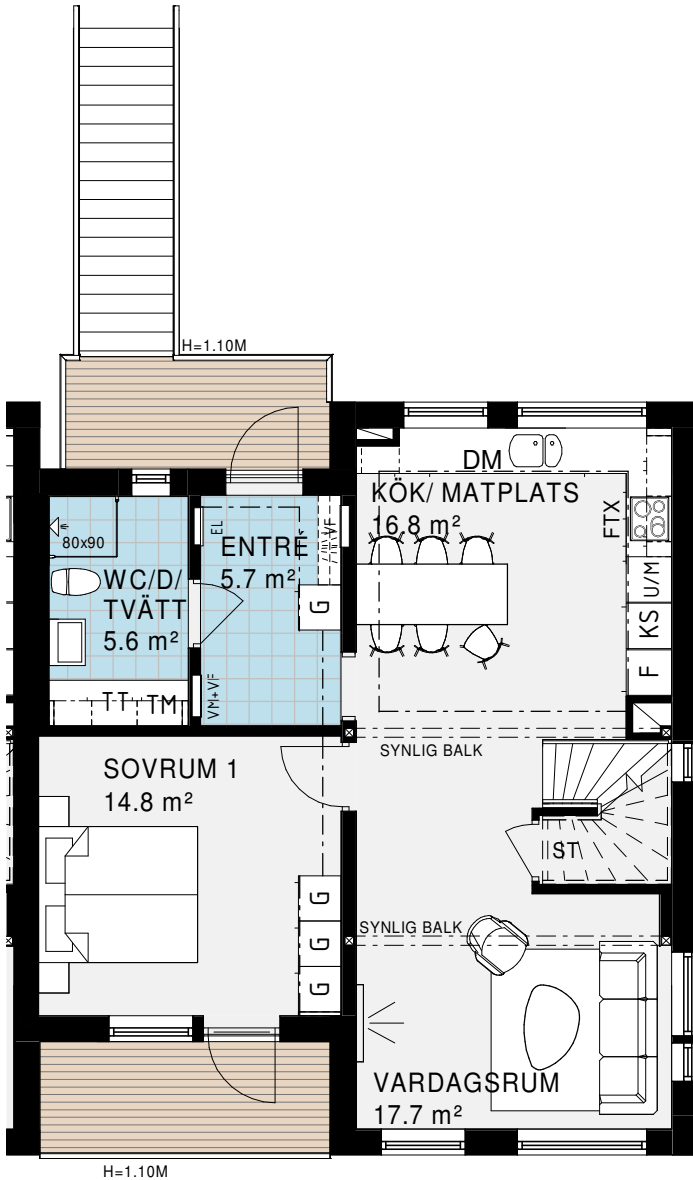
## FÖRKLARINGAR:

 ST	STÄDSKÅP	 SCHAKT
 KAPPHYLLA		 G
 DM	DISKMASKIN	 L
 SPIS		 U/M
 K/S	KYL/SVAL	 F
 TM	TVÄTTMASKIN	 TT
 F750	VÄRMEPUMP	
 TL	INVÄNDIG TAKLUCKA	



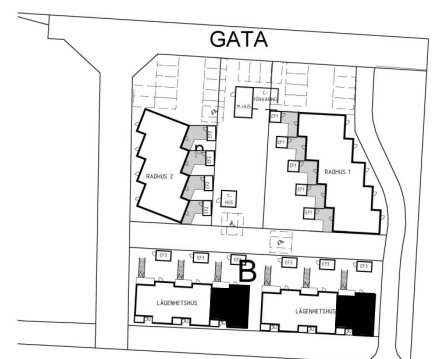
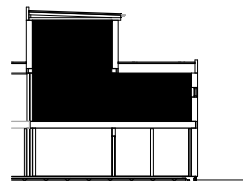
# Bofaktablad

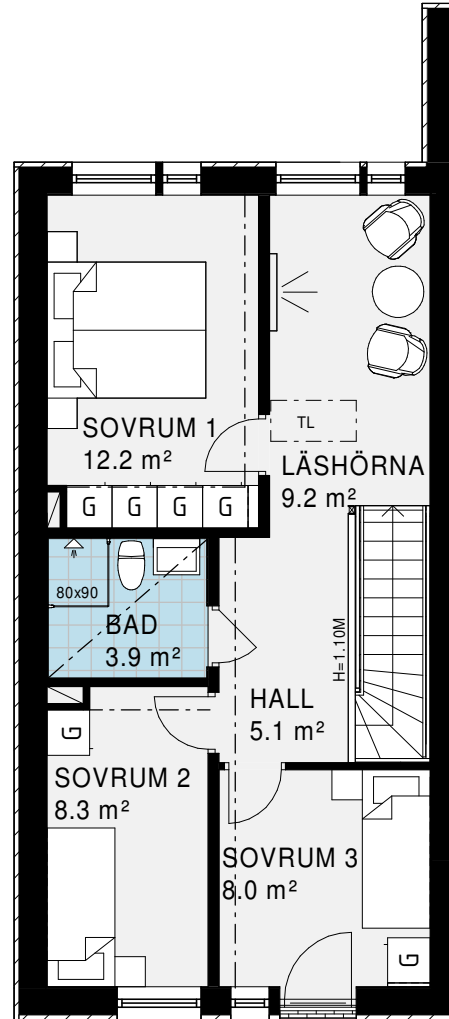
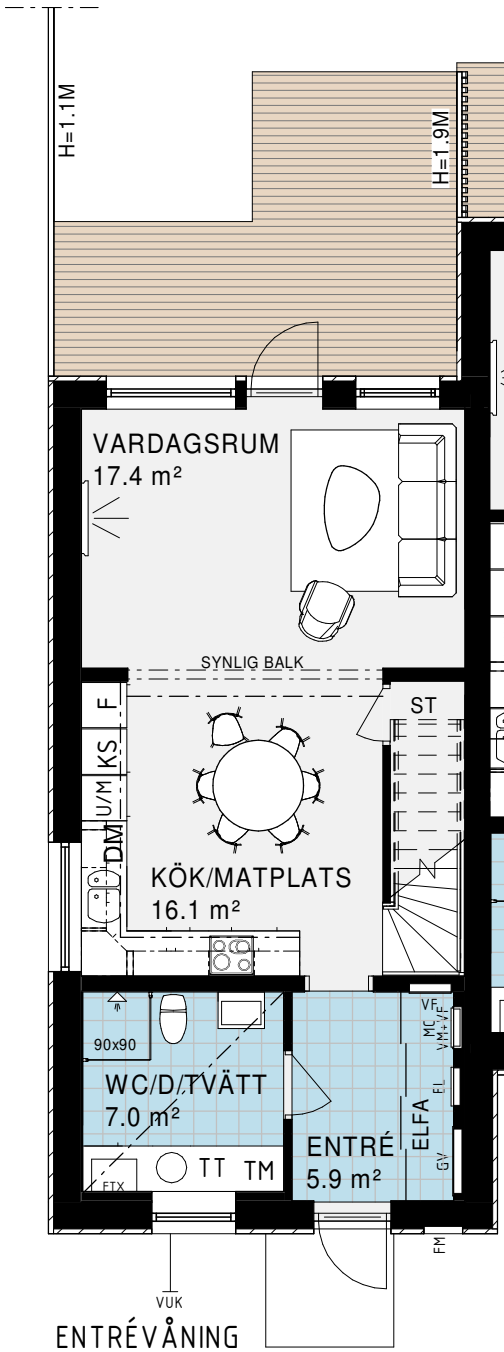
Avser bostad: 03-1103 & 04-1103



## FÖRKLARINGAR:

- |                      |                         |
|----------------------|-------------------------|
| ST STÄDSKÅP          | SCHAKT                  |
| KAPPHYLLA            | G GARDEROB              |
| DM DISKMASKIN        | L LINNESKÅP             |
| SPIS                 | U/M UGN/MICRO I HÖGSKÅP |
| K/S KYL/SVAL         | F FRYSS                 |
| TM TVÄTTMASKIN       | TT TORKTUMLARE          |
| F750 VÄRMEPUMP       |                         |
| TL INVÄNDIG TAKLUCKA |                         |



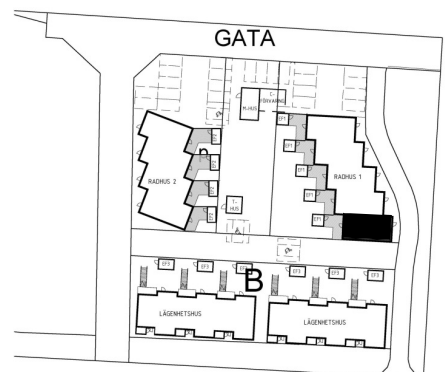


## FÖRKLARINGAR:

- |                      |                      |
|----------------------|----------------------|
| ST STÅDSKÅP          | SCHAKT               |
| KAPPHYLLA            | GARDEROB             |
| DM DISKMASKIN        |                      |
| SPIS                 | UGN/MICRO I HÖGSKÅP  |
| K/S KYL/SVAL         | FRYS                 |
| TM TVÄTTMASKIN       | TORKTUMLARE          |
| FJÄRRVÄRMEMODUL      | VENTILATIONSAGGREGAT |
| TL INVÄNDIG TAKLUCKA |                      |

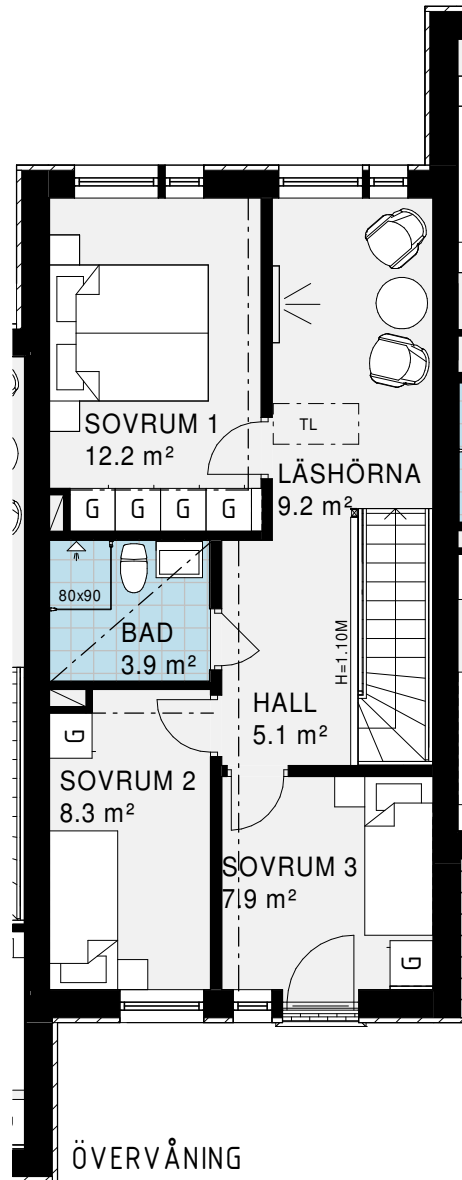
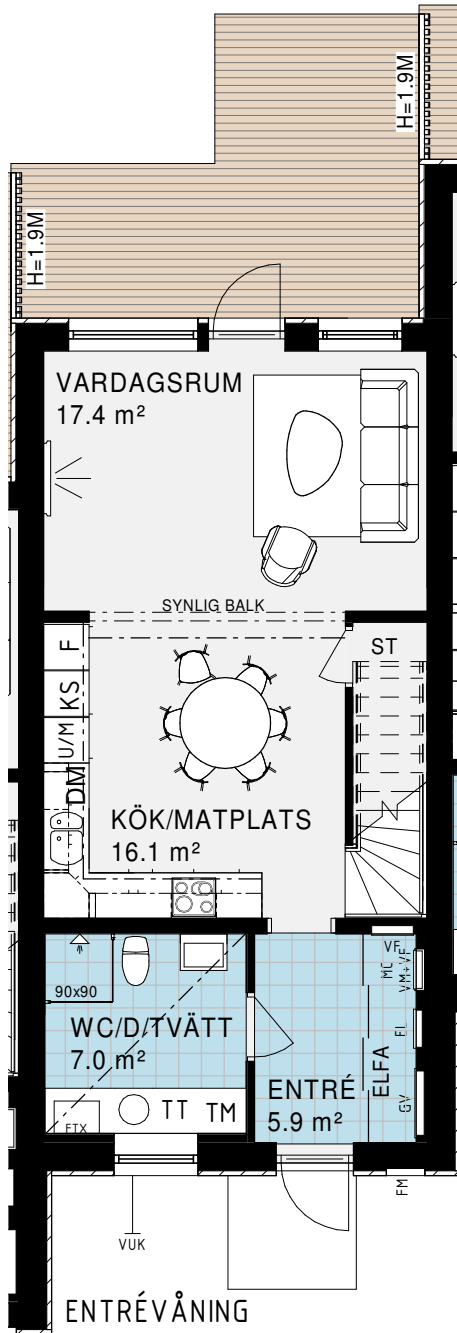


ÖVERVÅNING



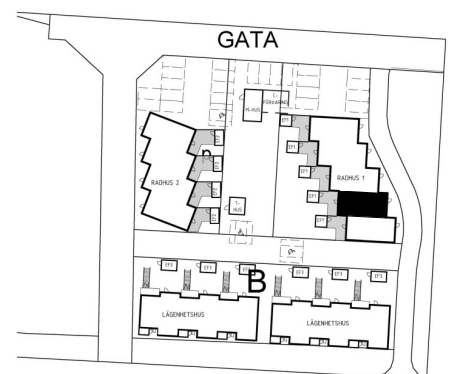
# Bofaktablad

Avser bostad: 01-1002



## FÖRKLARINGAR:

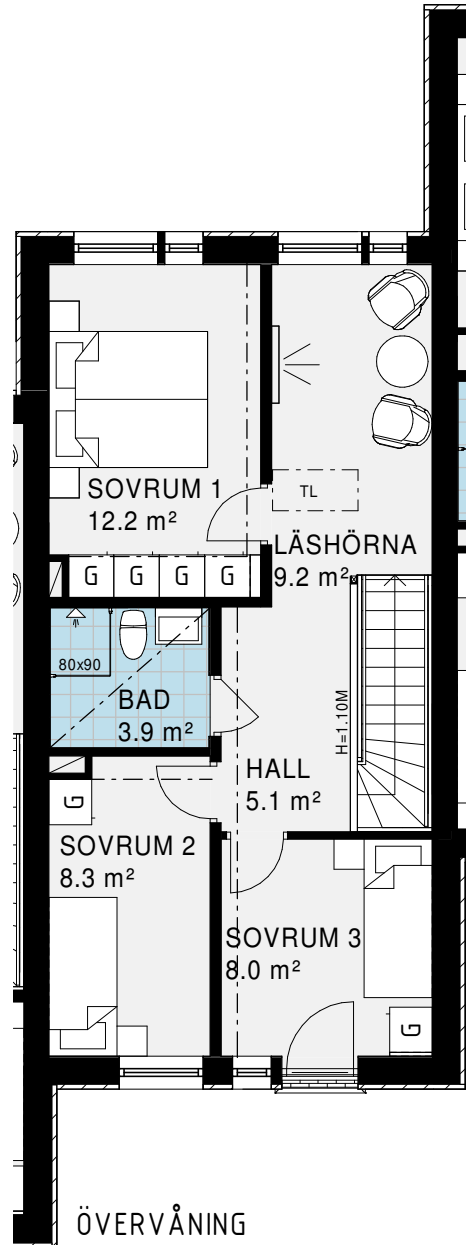
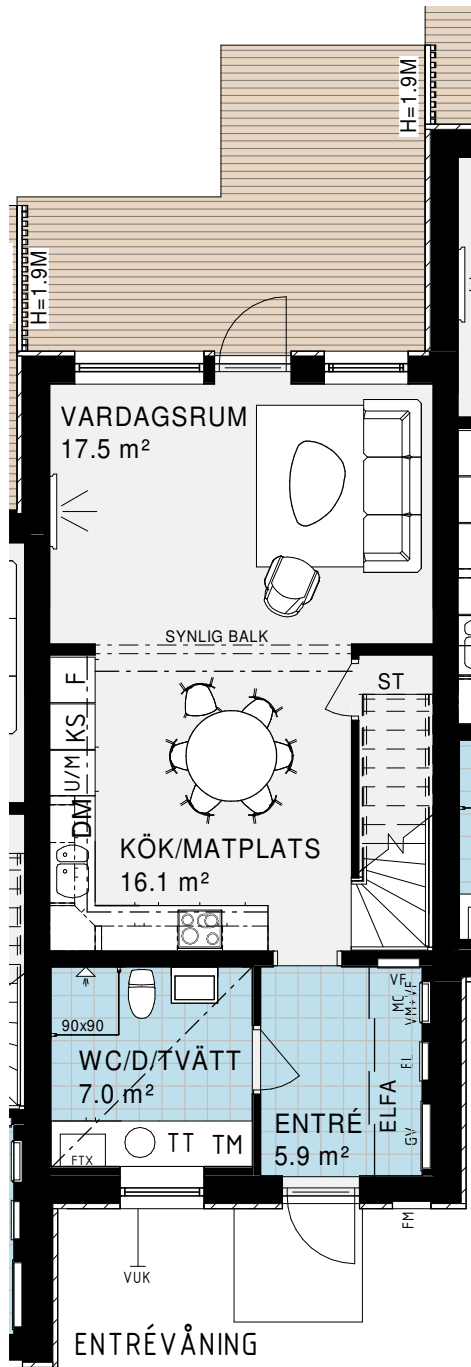
- |                      |                          |
|----------------------|--------------------------|
| ST STÅDSKÅP          | SCHAKT                   |
| KAPPHYLLA            | G GARDEROB               |
| DM DISKMASKIN        |                          |
| SPIS                 | U/M UGN/MICRO I HÖGSKÅP  |
| K/S KYL/SVAL         | F FRYS                   |
| TM TVÄTTMASKIN       | TT TORKTUMLARE           |
| FJÄRRVÄRMEMODUL      | FTX VENTILATIONSAGGREGAT |
| TL INVÄNDIG TAKLUCKA |                          |



VI FÖRBEHÅLLER OSS RÄTTEN FÖR KONSTRUKTIONSÄNDRINGAR.

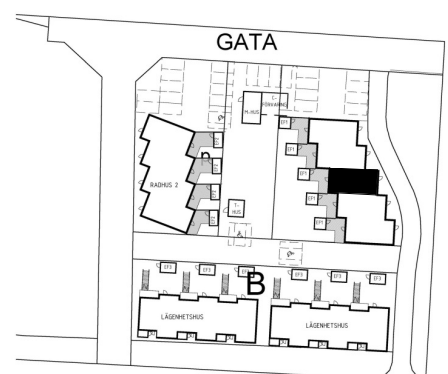
# Bofaktablad

Avser bostad: 01-1003



## FÖRKLARINGAR:

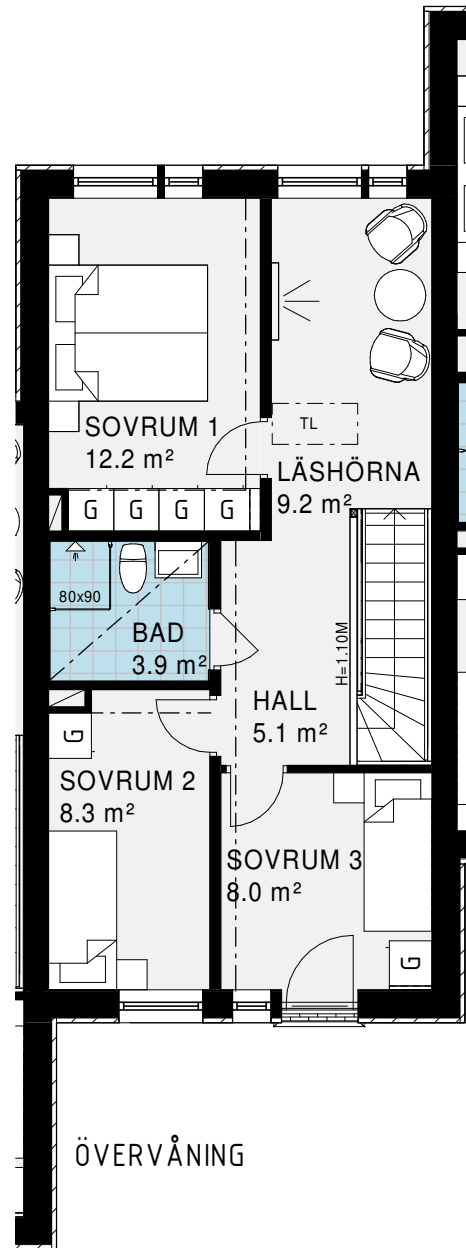
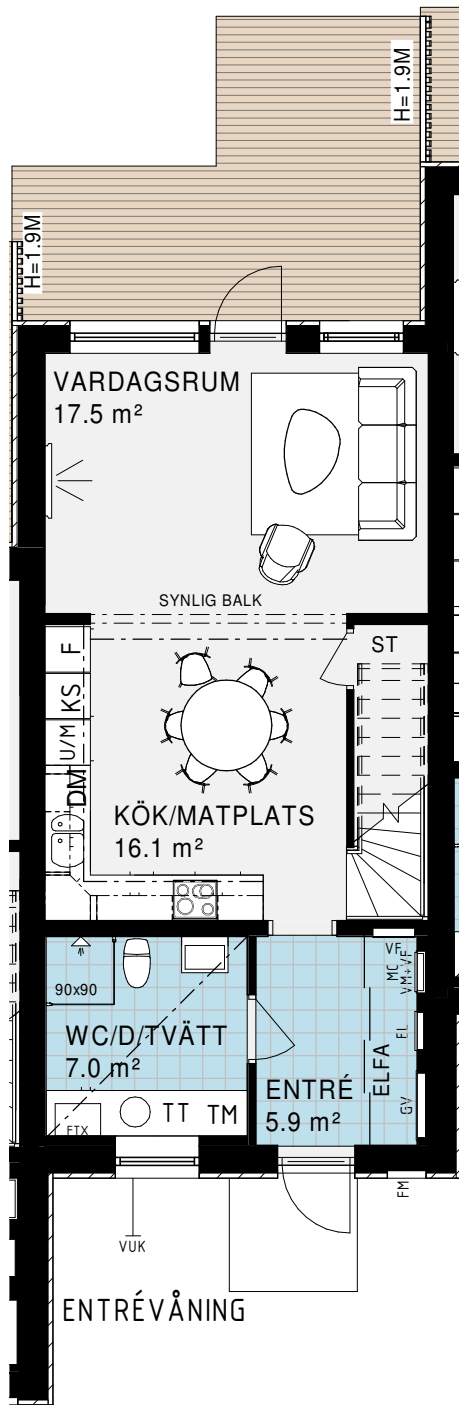
- |                      |                          |
|----------------------|--------------------------|
| ST STÅDSKÅP          | SCHAKT                   |
| KAPPHYLLA            | G GARDEROB               |
| DM DISKMASKIN        |                          |
| SPIS                 | U/M UGN/MICRO I HÖGSKÅP  |
| K/S KYL/SVAL         | F FRYS                   |
| TM TVÄTTMASKIN       | TT TORKTUMLARE           |
| FJÄRRVÄRMEMODUL      | FTX VENTILATIONSAGGREGAT |
| TL INVÄNDIG TAKLUCKA |                          |



VI FÖRBEHÅLLER OSS RÄTTEN FÖR KONSTRUKTIONSÄNDRINGAR.

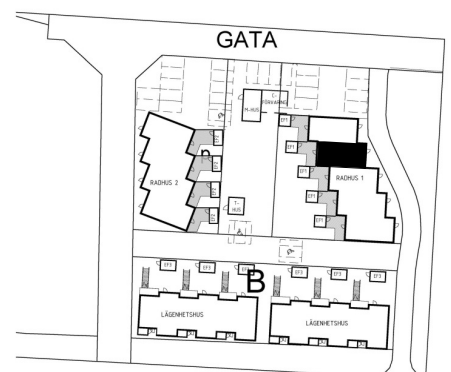
# Bofaktablad

Avser bostad: 01-1004



## FÖRKLARINGAR:

- |                      |                          |
|----------------------|--------------------------|
| ST STÅDSKÅP          | SCHAKT                   |
| KAPPHYLLA            | G GARDEROB               |
| DM DISKMASKIN        |                          |
| SPIS                 | U/M UGN/MICRO I HÖGSKÅP  |
| K/S KYL/SVAL         | F FRYS                   |
| TM TVÄTTMASKIN       | TT TORKTUMLARE           |
| FJÄRRVÄRMEMODUL      | FTX VENTILATIONSAGGREGAT |
| TL INVÄNDIG TAKLUCKA |                          |



VI FÖRBEHÅLLER OSS RÄTTEN FÖR KONSTRUKTIONSÄNDRINGAR.