



NEW!

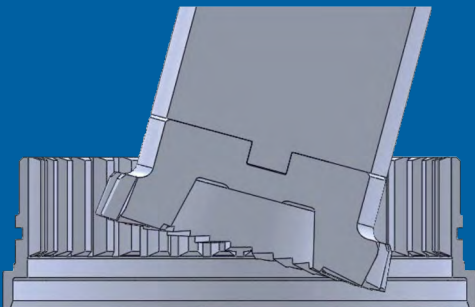
SKIVING CUTTERS

Features & Benefits

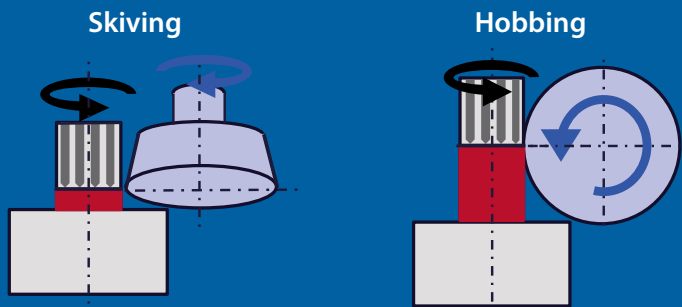
- Turning and gear cutting can be performed on the same multi-axis machine to consolidate the machining process.
- Applicable for both internal and external gears.
- Adjustments on tooth profile and tooth lead can be easily made on the machine.
- Higher efficiency than conventional pinion cutters (shaper cutters) and broaching.



Prevents Tool Interference



Enables Cutting up to the End of the Workpiece



Uncuttable Area Skiving up to the end of the workpiece with small clearance, which cannot be achieved by hobbing.



Module: m0.55~m6.0
Cutter Material: Powder metallurgy HSS, Carbide
Coating: WXL coating, which has a proven track record in gear cutting tools, as well as additional coating options based on individual application needs

Cutter Grade: JIS (DIN) Grade AA
 JIS B 4356-1996
Gear Grade*: JIS (DIN) Grade N5
 JIS B 1702-1 : 2016
 *Varies depending on cutting environment.

The OSG Global Technology Center is equipped with multi-axis machines, gear inspection machines and cutter grinders. Cutting Trials can be performed according to specified requirements. Contact us to learn more!

As a total solution provider, OSG can also fulfill needs pertaining threading and special gages in spline applications.

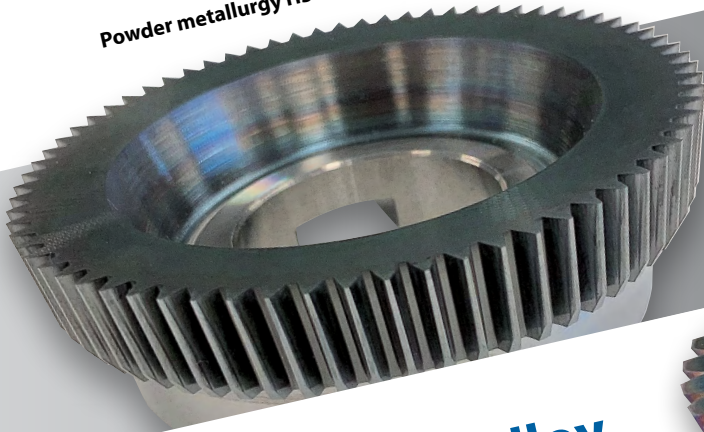
SKIVING CUTTER LINEUP

Cost, Machining, and Material Efficiency

for General Materials

WXL COATING

Powder metallurgy HSS with WXL coating for general steels



for Hardened Steel

DUROREY COATING

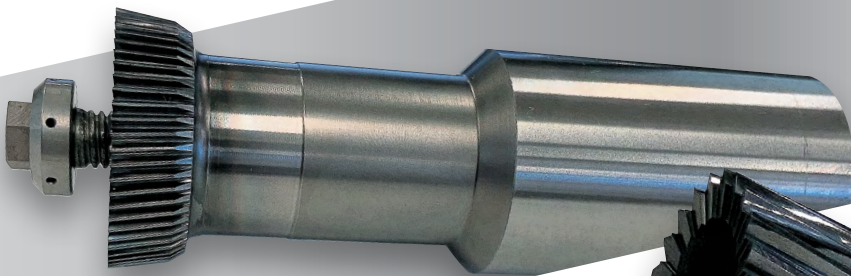
Cemented carbide with DUROREY coating for hardened steel



for Aluminum Alloy

DLC COATING

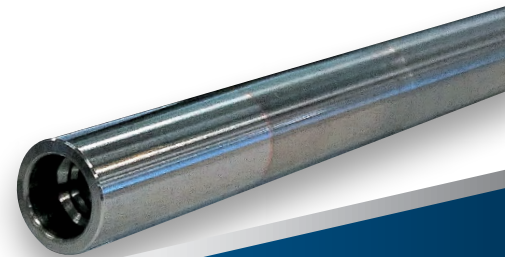
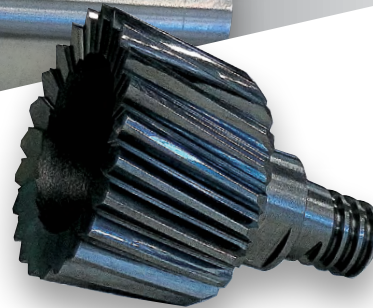
Powder metallurgy HSS with DLC coating for aluminum alloy



Center-Through

WXL COATING

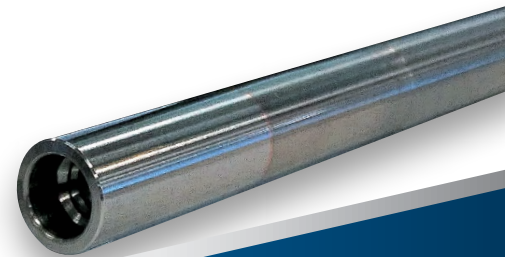
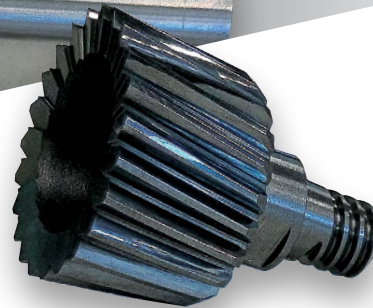
Powder Metallurgy HSS center-through type with WXL coating for excellent chip evacuation



Exchangeable Head

WXL COATING

Cemented carbide exchangeable head with WXL coating for maximum cost efficiency



For more information on special tooling use your phone to scan the QR code to the right and visit: osgtool.com/contact-us



© Copyright 2024 OSG USA, INC. All rights reserved.
EDP#800434CA

osgtool.com
OSG USA, Inc. : 800-837-2223

OSG Canada, Ltd. : 905-632-8032 • OSG Royco (Mexico) : +52 (722) 279-36-08 to 11