

## Miami TLSO™ Technical Presentation

Fernando Serratos

April 2020



# Miami TLSO™ – Indications for use

**Indications:** Conditions requiring gross immobilization of the trunk in the lumbar region. Such conditions may include:

- Post-surgical immobilization
- Spinal Support TLSO attachment is up to T7
- Spinal stenosis
- Herniated disc
- Degenerative spinal fractures
- Spondylolithesis
- Spondylolysis

**Contra-indication:**

- Unstable, Displaced fractures

Level of Immobilization



# Anatomy / Indications

## Spinal Stenosis

Spinal stenosis can put pressure on the spinal cord and the nerves within the spine. It commonly occurs in the neck and lower back. The condition is often caused by age-related wear and tear.

## Herniated Disc

This condition occurs when the soft center of a spinal disk pushes through a crack in the tougher exterior casing. Some herniated discs cause no symptoms. Others can irritate nearby nerves and result in pain, numbness, or weakness in an arm or leg.

## Degenerative Spinal Fractures

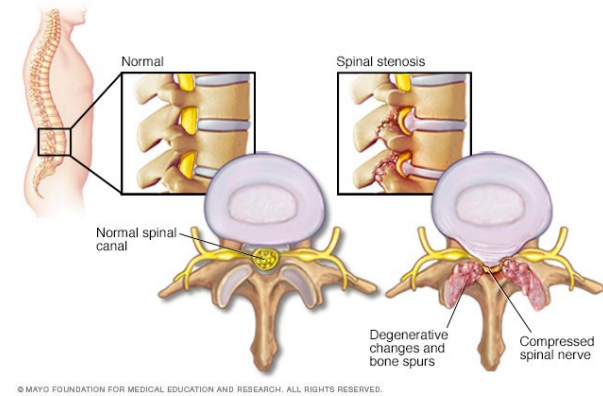
A vertebral fracture occurs when a vertebra in the spine cracks and has a small, thin break in the bone due to stress or other spine conditions, such as arthritis of the spine. The symptoms of a vertebral fracture can be immediate if caused by injury or gradual if caused by the natural degeneration of the spine.

## Spondylolisthesis

The forward displacement of a vertebra over a lower segment, usually of the fourth or fifth lumbar vertebra.

## Spondylolysis

Spondylolysis is a defect in the pars interarticularis of a vertebra. It is typically caused by stress fracture of the bone. Majority of cases occur in the lowest of the lumbar vertebrae (L5), but spondylolysis may also occur in the other lumbar vertebrae, as well as in the thoracic vertebrae. It is typically caused by stress fracture of the bone.



## Primary

1. Post-surgical stabilization
2. Motion restriction of the Thoracic and Lumbar spine in all three planes
  - Sagittal Plane: Flexion/Extension
  - Coronal Plane: Lateral Bending
  - Transverse Plane: Rotation

## Secondary

- Ease of use
- Minimal preparation
- Enhanced comfort





# MIAMI TLSO: CONFIGURATIONS

Fernando Serratos



Miami TLSO 464  
Over the  
Shoulder



Miami TLSO 464  
Axillary



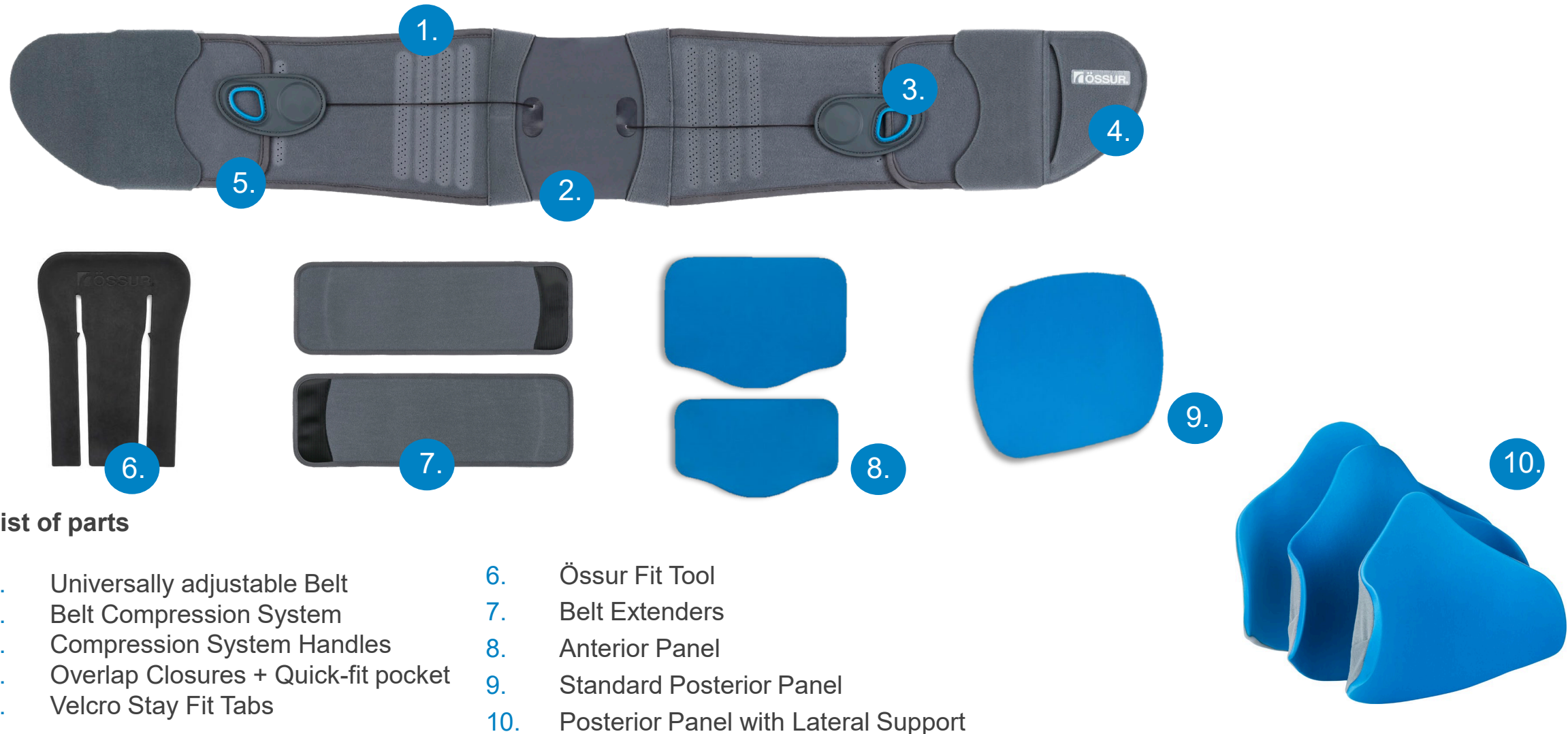
Miami TLSO 464  
Over the Shoulder  
+ Axillary



Miami TLSO 456  
PTE



# Miami® TLSO™ – List of parts



## MIAMI LUMBAR® TLSO VS MIAMI TLSO™ (Panels)

**Miami Lumbar TLSO:** Miami Lumbar belt with integrated panel *plus* posterior lumbar panel. Accessory ATE & PTE TLSO attachment.



**Miami TLSO:** requires minimal preparation and is designed to provide optimal patient comfort.





# Features and benefits

Feature	Miami TLSO™	Competitive TLSO
<b>Fit and Comfort</b>		
<b>Easy Fitting</b> <ul style="list-style-type: none"> <li>• Pre-Assembled</li> <li>• Quick Release Buckles</li> </ul>	<ul style="list-style-type: none"> <li>• The Miami TLSO brace requires minimal preparation and is designed to provide optimal patient comfort</li> <li>• Easily applied in over the shoulder or underarm configuration, donning and doffing is further simplified with the conveniently located quick release buckles</li> </ul>	<ul style="list-style-type: none"> <li>• This is a feature competitors offer</li> <li>• This is a feature competitors offer</li> </ul>
<b>Comfort during Use</b>	<ul style="list-style-type: none"> <li>• The product is light weight</li> <li>• Has a low profile or very thin                             <ul style="list-style-type: none"> <li>• Due to the thin belt structure there is less of a micro climate next to skin and is discreet under clothes</li> </ul> </li> </ul>	<ul style="list-style-type: none"> <li>• Typically heavier</li> <li>• Thicker belts made of Spacer material create micro climates similar to insulation barriers, creating heat retention and are uncomfortable during long periods of use</li> </ul>
<b>Four Configurations</b>	<ul style="list-style-type: none"> <li>• ATE+PTE Over the Shoulder</li> <li>• ATE+PTE Axillary</li> <li>• ATE+PTE Over the Shoulder +Axillary</li> <li>• PTE Only (Backpack Version)</li> </ul>	<ul style="list-style-type: none"> <li>• This is a feature competitors offer</li> </ul>



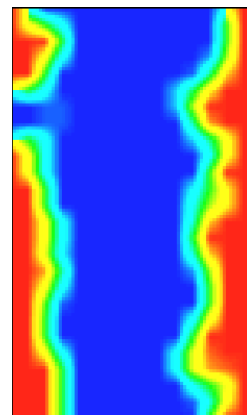
# Anatomically Shaped Panels



- Truly shaped to fit the anatomy, the anatomically contoured design better immobilizes the spine while maximizing patient comfort
- Prevents any pressure on the surgical site and provides pressure on the para-spinal muscles

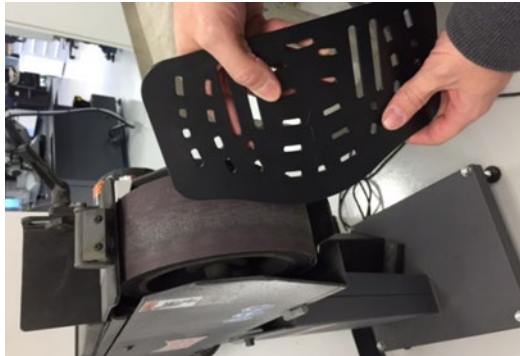
This pressure mapping study shows the relief along the spine (blue color) and the gentle even contact of the brace with the anatomy in the remaining areas of the lumbar region (yellow / red area). No pressure spikes indicating possible areas of discomfort were seen on patients wearing the Miami LSO

◀ Anatomical posterior panels unique to Össur's design encourage patient comfort and compliance and reduce pressure on the spinous process.



# Product Modifications

Miami TLSO panels are thermo-formable and trim-able to accommodate most body types.



The posterior and anterior rigid panels can be modified as necessary to optimize patient fit and comfort. Simply remove the panels from their fabric sleeve and adjust the rigid panel with a heat gun (350° F/175° C). The panels can also be grinded, and/or trimmed for proper relief and comfort.

# Product Modifications

The length of the belt and compression cord can be adjusted to achieve a custom circumferential fit.



- To lengthen the belt arms, remove the closure tabs and unfold the belt arms.
- Secure belt arm extension on both ends



- To lengthen or shorten the compression cord, remove the spool from the pulley handle and roll or release the cord as needed.

## BRACE MAINTENANCE

The Miami TLSO system is designed for minimum maintenance and care. The padded covers may be removed from the rigid panels for washing.

- Hand-wash using mild soap and rinse thoroughly.
- Air dry flat.
- do not machine wash or place in tumble dryer.



# Warranty

---

- Belt and Panels:  
6 months

# WE IMPROVE PEOPLE'S MOBILITY

