

758Z117

EN Original instructions	
---------------------------------------	--

DE - Weitere Sprachversionen können Sie herunterladen unter: www.pe.ottobock.com/downloadcenter
EN - Additional language versions are available for download under: www.pe.ottobock.com/downloadcenter
FR - Vous pouvez télécharger d'autres versions linguistiques sur: www.pe.ottobock.com/downloadcenter
IT - Ulteriori lingue possono essere scaricate all'indirizzo: www.pe.ottobock.com/downloadcenter
ES - Puede descargar la versión en otros idiomas en: www.pe.ottobock.com/downloadcenter
NL - Overige taalversies kunt u downloaden via: www.pe.ottobock.com/downloadcenter
SV - Andra språkversioner går att ladda ner från: www.pe.ottobock.com/downloadcenter
RU - Версии на других языках можно скачать по ссылке: www.pe.ottobock.com/downloadcenter

Table of contents

EN

1	Important information on this document	5
1.1	Scope of this document	5
1.2	Document release date	5
1.3	Structure of this document	6
1.4	Meanings of safety instructions and pictograms	6
1.4.1	Meanings of signal words in safety instructions	6
1.4.1.1	Signal word DANGER	7
1.4.1.2	Signal word WARNING	7
1.4.1.3	Signal word CAUTION	7
1.4.1.4	Signal word NOTICE	7
1.4.1.5	Structure of the safety instructions	7
1.4.2	Meanings of pictograms	7
1.4.2.1	Meanings of pictograms in the illustration	7
2	Product Description	8
2.1	Intended Use	8
2.2	Improper use	9
2.3	Product overview	9
2.3.1	Control elements	9
2.3.1.1	Main switch	9
2.3.1.2	Vacuum regulator	10
2.3.1.3	Vacuum ball valves	11
2.3.1.4	Condensate drain ball valve	11
2.3.1.5	Clamping lever	11
2.3.1.6	Locking lever	12
2.3.1.7	Triangular key	12
2.3.2	Indicator elements	12
2.3.2.1	Pressure gauge	12
2.3.2.2	Viewing window for oil level	13
2.3.3	Special product components	13
2.3.3.1	Air exhaust grid	13
2.3.3.2	Storage pocket for operating instructions	13
3	Safety	14
3.1	Hazardous areas and precautions	15
3.1.1	Hazardous area 1	15
3.1.2	Hazardous area 2	15
3.1.3	Hazardous area 3	16
3.1.4	Hazardous area 4	16
4	Technical data	17
4.1	Dimensions and weight	17
4.2	Electrical data	17
4.3	Noise emissions	17
4.4	Environmental conditions	17
5	Transport	18
6	Storage	18
7	Unpacking	19
7.1	Checking the delivered items	20
8	Positioning	21
9	Installation	22
9.1	Installation of the product on the floor	22
9.2	Checking and correcting the installation of the vacuum hoses	23
10	Initial operation	23
10.1	Optional: Installation of another mains plug	24

11	Operation	24
11.1	Switching on the product	24
11.2	Laminating	25
11.3	Switching off the product	25
11.4	Cleaning	26
12	Troubleshooting	26
13	Maintenance	27
13.1	Inspection	28
13.1.1	Checking the nameplate and the labels.....	28
13.1.2	Checking the cables.....	29
13.1.3	Checking the lamps	30
13.1.4	Checking the oil level	30
13.1.5	Checking the vacuum filters	31
13.2	Maintenance.....	32
13.2.1	Changing the vacuum filters	32
13.2.2	Changing the oil	33
13.2.3	Changing the oil filter	34
13.2.4	Draining condensate	35
13.2.5	Changing the fuse.....	36
13.3	Repair	37
13.4	Electrical diagram	37
14	Putting out of operation	38
15	Disassembly	38
16	Packaging	38
17	Disposal	38
18	Legal Information	39
18.1	Liability	39
18.2	Declaration of Conformity.....	39
19	Appendices	40
19.1	List of pictograms used.....	40
19.1.1	Warning symbols	40
19.1.2	Mandatory symbols	40
19.1.3	Prohibition symbols	41
19.1.4	Transport and storage pictograms.....	41

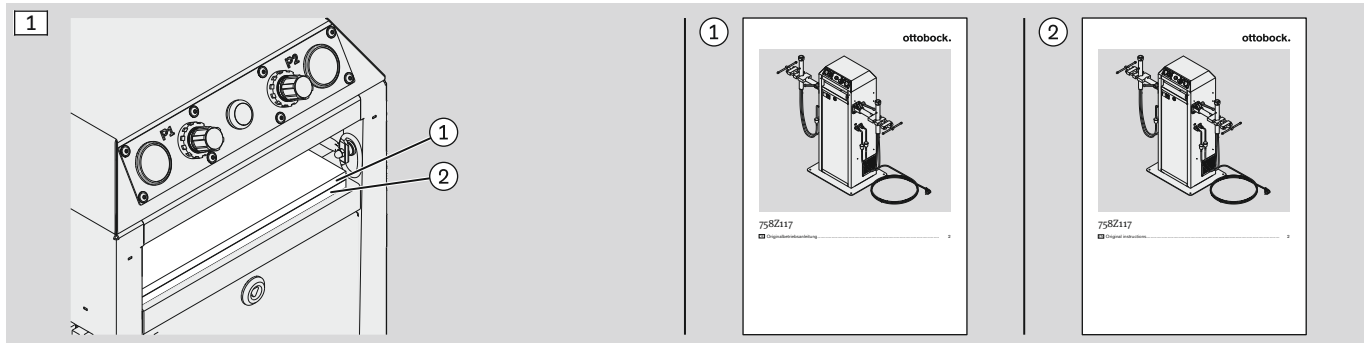
1 Important information on this document

⚠ WARNING

Working with the product without observing the operating instructions

Death or serious injury due to reckless work

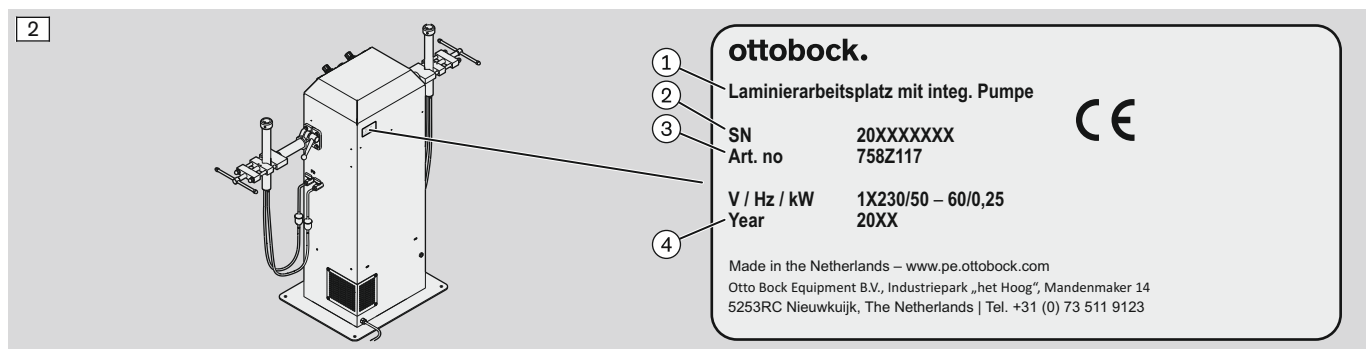
- ▶ Observe the operating instructions when working with the product.
- ▶ Familiarise yourself with the structure and contents of the operating instructions by reading the chapter "Structure of this document" (see Page 6).
- ▶ Please especially observe the chapter "Safety" (see Page 14) and the safety instructions in the chapters in connection with the work to be carried out.
- ▶ Please always keep these operating instructions by the product.



1.1 Scope of this document

This document is valid for the following products:

Reference number	Designation	From year of manufacture
758Z117	Laminating workstation with integrated pump	2019



Nameplate legend			
①	Laminating workstation with integrated pump	③	Art no. (reference number)
②	SN (Serial number)	④	Year (Year of manufacture)

1.2 Document release date

This document is valid as of the following release date:

Printing reference number	Version	Release date [year-month-day]
647G1450	01	2019-05-24

1.3 Structure of this document

The chapters of this document contain all important product information.

The document structure is essentially oriented towards the various phases in the product life cycle and the associated tasks.

The product can only be used safely if all chapters relevant to the given work have been read.

The following list shows the chapters important for all work, those important for specific tasks and those containing general information:

Chapters important for all work

- **Important information on this document** (see Page 5)
- **Product description** (see Page 8)
- **Safety** (see Page 14)
- **Legal information** (see Page 39)

Chapters important for specific tasks

- **Technical data** (see Page 17)
- **Transport** (see Page 18)
- **Storage** (see Page 18)
- **Unpacking** (see Page 19)
- **Positioning** (see Page 21)
- **Installation** (see Page 22)
- **Initial Operation** (see Page 23)
- **Operation** (see Page 24)
- **Troubleshooting** (see Page 26)
- **Servicing** (see Page 27)
- **Putting out of operation** (see Page 38)
- **Disassembly** (see Page 38)
- **Packaging** (see Page 38)
- **Disposal** (see Page 38)

Chapter containing general information

- **Appendices** (see Page 40)

1.4 Meanings of safety instructions and pictograms

1.4.1 Meanings of signal words in safety instructions

This document contains safety instructions that provide information about hazards connected to the product.

The hazard severity level and consequences are highlighted and classified in the safety instructions by means of signal words.

In the following subchapters the signal words and the structure of the safety instructions are explained.

1.4.1.1 Signal word DANGER

The signal word "DANGER" draws attention to dangerous actions or situations which will inevitably have the severe consequences specified in the safety instruction (e.g. death or serious injury) in case of noncompliance.

1.4.1.2 Signal word WARNING

The signal word "WARNING" draws attention to dangerous actions or situations which could possibly have the severe consequences specified in the safety instruction (e.g. death or serious injury) in case of noncompliance.

1.4.1.3 Signal word CAUTION

The signal word "CAUTION" draws attention to dangerous actions or situations which will have the minor consequences specified in the safety instruction (minor injury) in case of noncompliance.

1.4.1.4 Signal word NOTICE

The signal word "NOTICE" draws attention to dangerous actions or situations which could possibly lead to the material damage specified in the safety instruction (e.g. damage to the product) in case of noncompliance.

1.4.1.5 Structure of the safety instructions

In this document the following types of safety instructions are used:

- Safety instructions
- Embedded safety instructions

The following examples illustrate the manner in which these types of safety instructions are structured. The signal word "CAUTION" is used as an example.

Structure of a safety instruction

In the first paragraph under the signal word the type and source of the hazard are indicated. These are dangerous activities or situations connected with the product.

The optional pictogram represents either the hazard type and source or the precautionary measure to be taken.

In the second paragraph the consequences of disregarding the hazard are described.

► From the third paragraph on handling instructions for avoiding the hazard are given.

Structure of an embedded safety instruction

The embedded safety instruction is only used in handling instructions.

► **CAUTION! The first part of the handling instruction is the embedded safety instruction. After the signal word a handling instruction is given as a measure for avoiding the hazard.**

The second part contains the handling instruction which is directly connected with the embedded safety instruction.

1.4.2 Meanings of pictograms

In this document symbols and pictograms which are either self-explanatory or whose meaning can be deduced from the context are used.

The chapter "Appendix" contains an explanation of the symbols and pictograms in the section "List of pictograms used" (see Page 40).

1.4.2.1 Meanings of pictograms in the illustration

	Numbering for the illustrations		The instructions accompanying the illustrations are relevant to safety
	Numbering for a defined sequence		Numbering for the parts of an illustration
	Acceptable		Unacceptable
	Locked		Unlocked

2 Product Description

2.1 Intended Use

⚠ WARNING

Improper use of the product

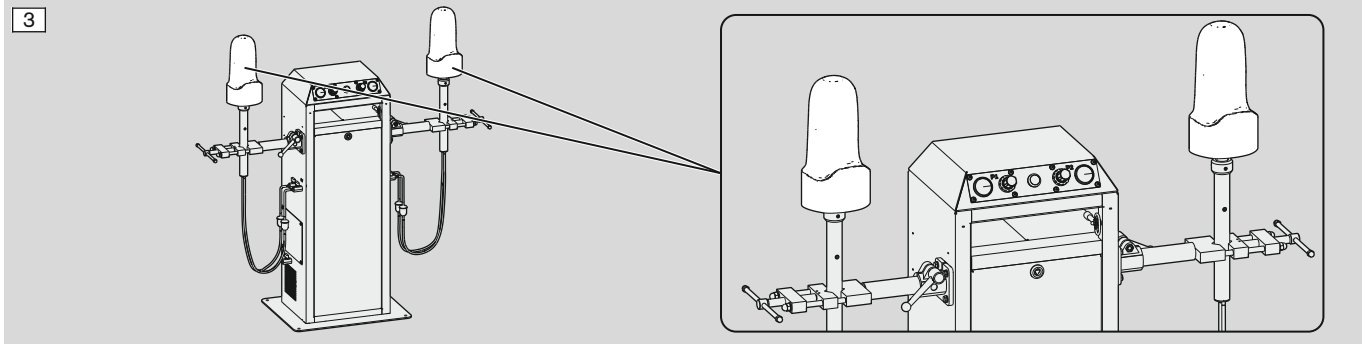
Death, serious injury or damage to health and to the product through improper use

- Only use the product for its intended purpose.

The product has been designed for the following application area only:

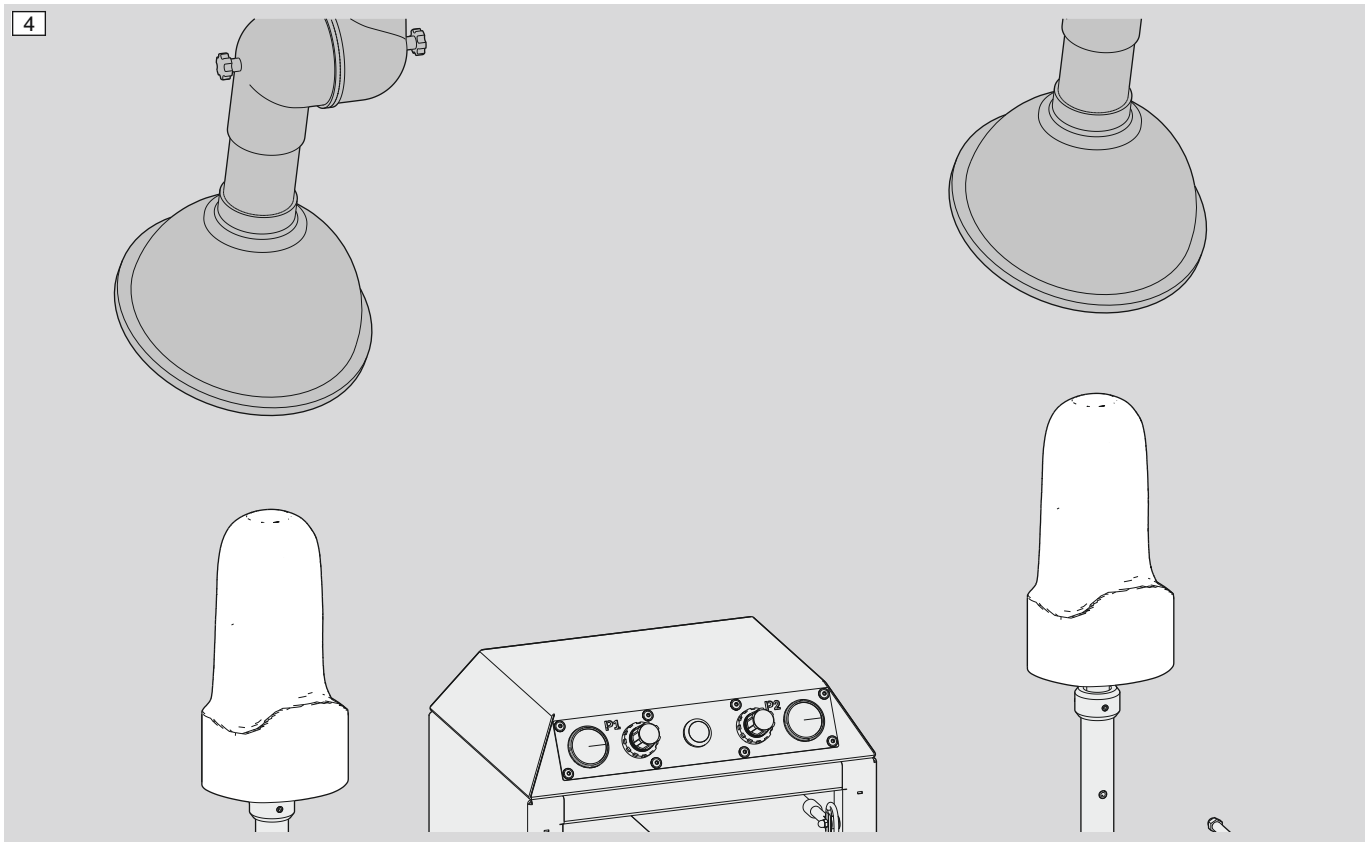
Intended production methods

- Generating negative pressure for laminating



Intended additionally required machines

- Suction of health-endangering substances



Intended tools

- Ottobock tools appropriate for the production method and the workpiece material

Intended installation location

- Orthopaedic workshop

Correct staff selection

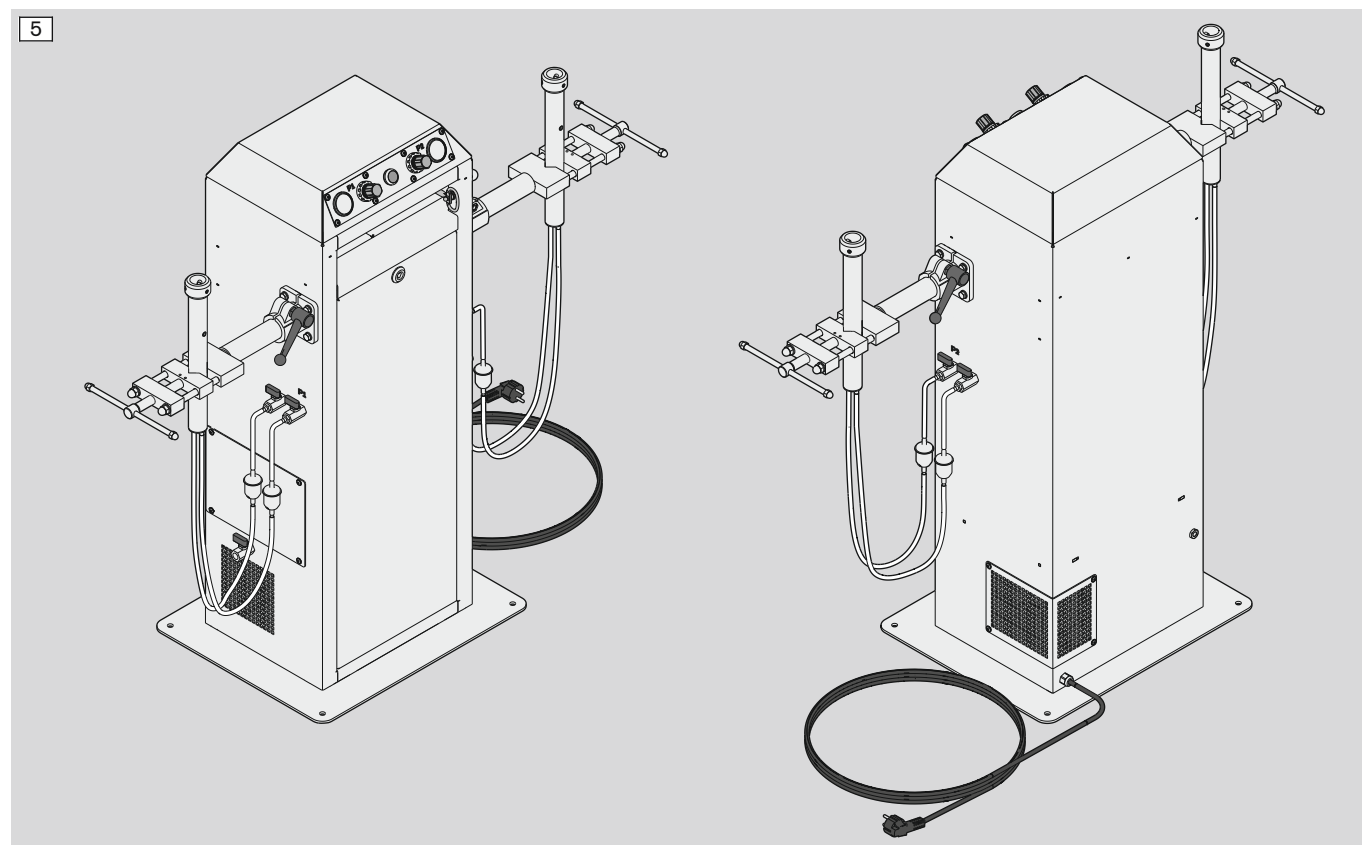
- Use only by properly trained employees authorised by operator
- Use only following product training by operator
- Repair and maintenance work only by service technicians or specialists authorised by Ottobock in accordance with the requirements given in the respective chapters
- Special work (e.g. transport) only by staff in accordance with the requirements given in the respective chapter

2.2 Improper use

The product is not intended for the following prohibited uses:

- Improper use is any use not listed in the chapter "Intended use"

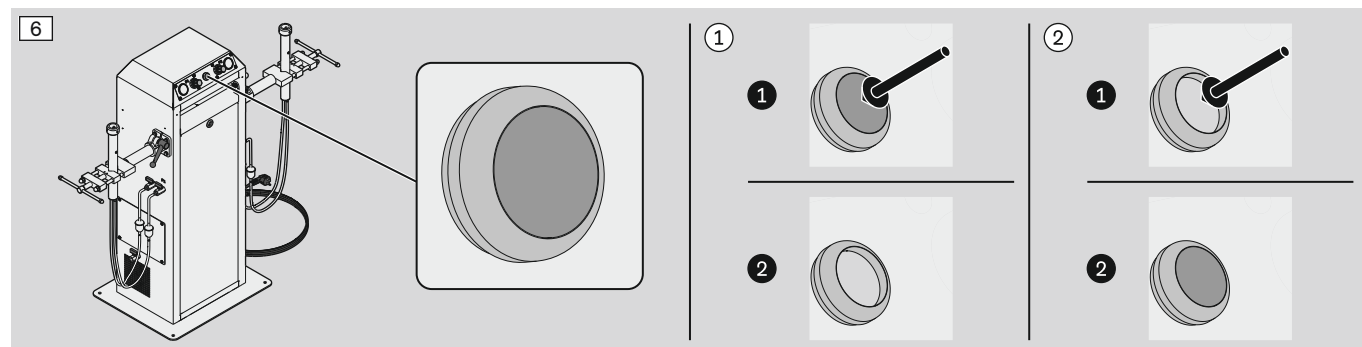
2.3 Product overview



2.3.1 Control elements

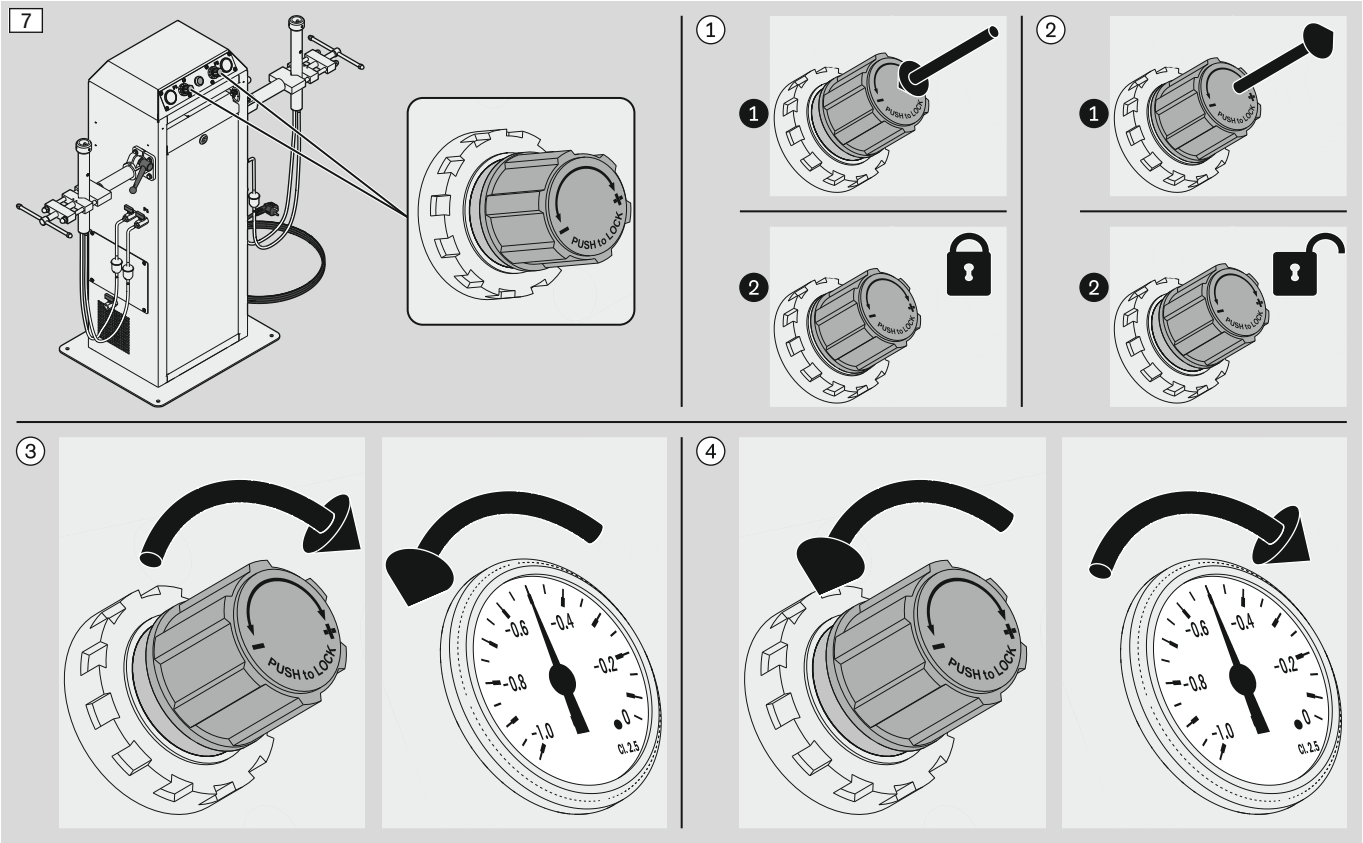
2.3.1.1 Main switch

Switching on ①, Switching off ②

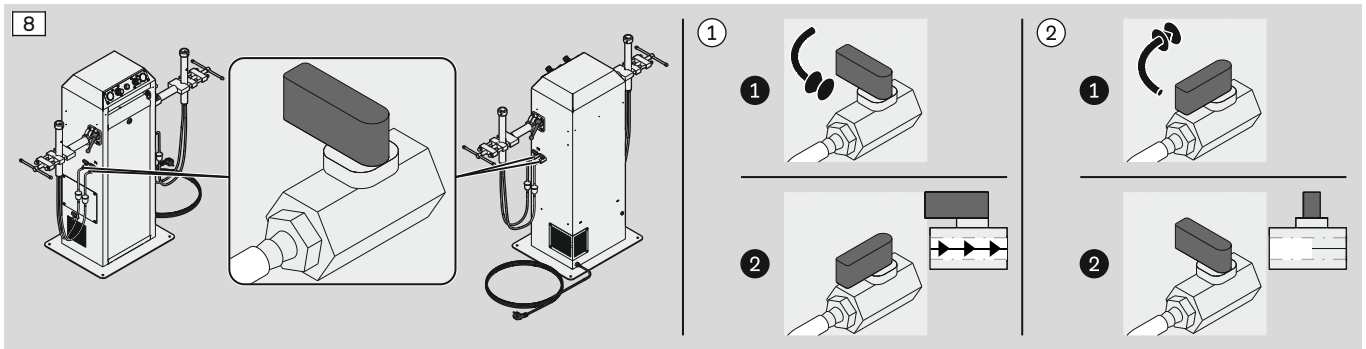


2.3.1.2 Vacuum regulator

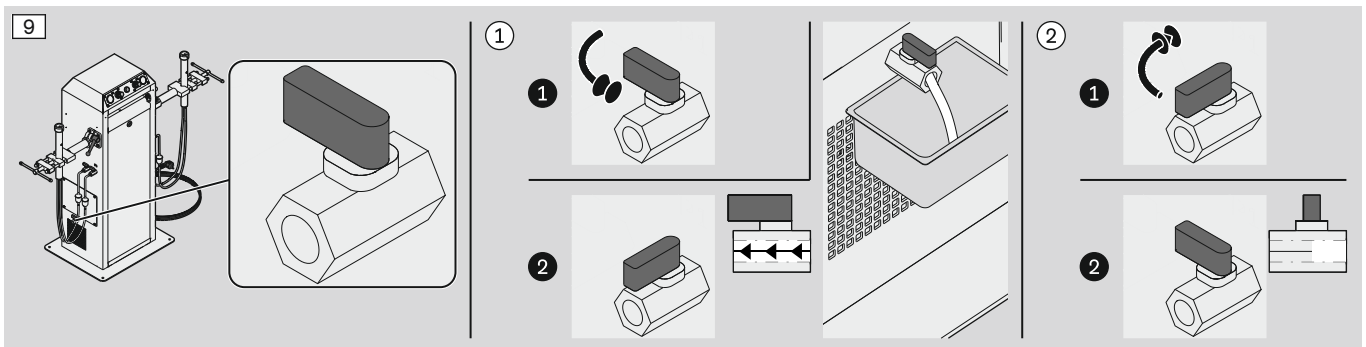
Locking ①, Unlocking ②, Increasing negative pressure ③, Decreasing negative pressure ④



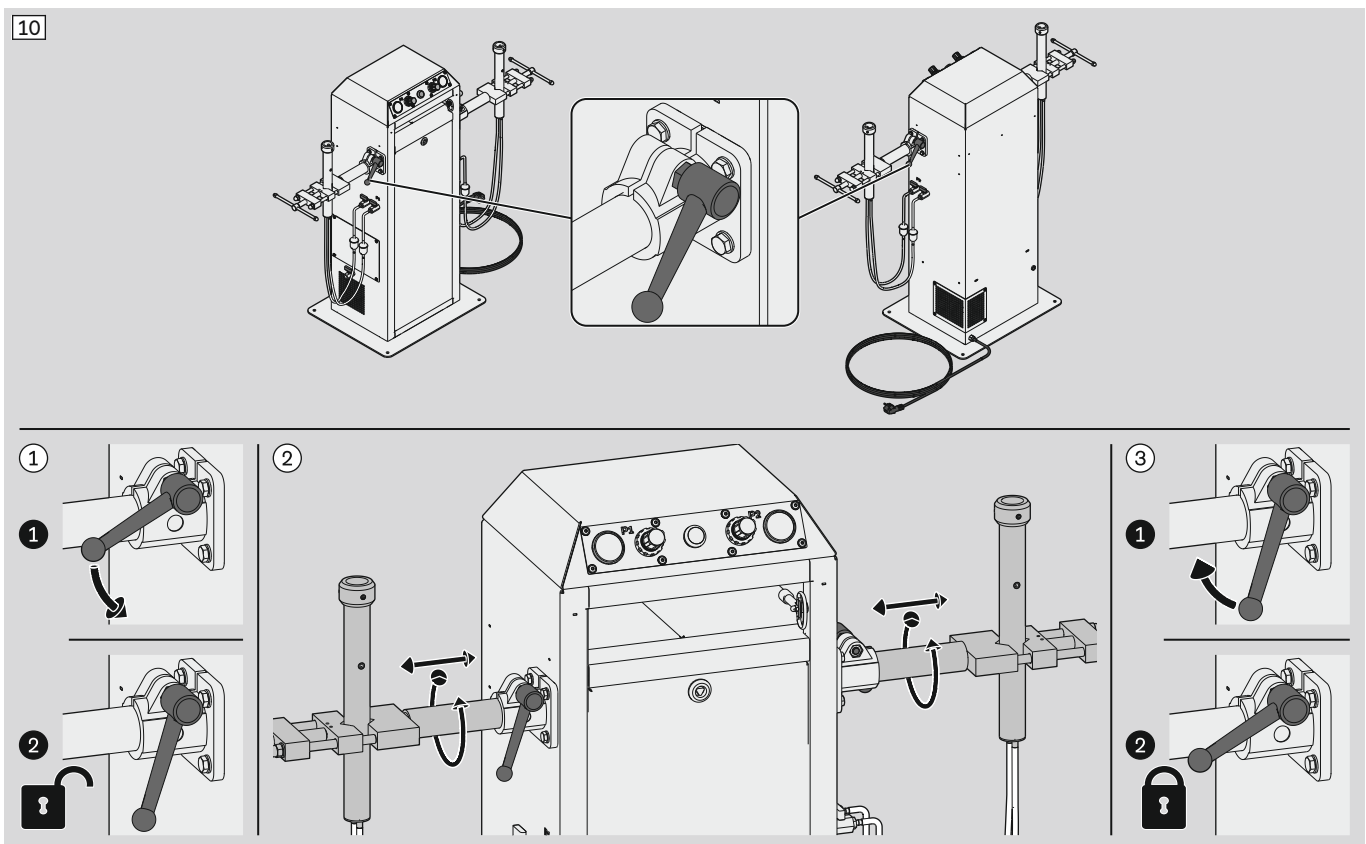
2.3.1.3 Vacuum ball valves



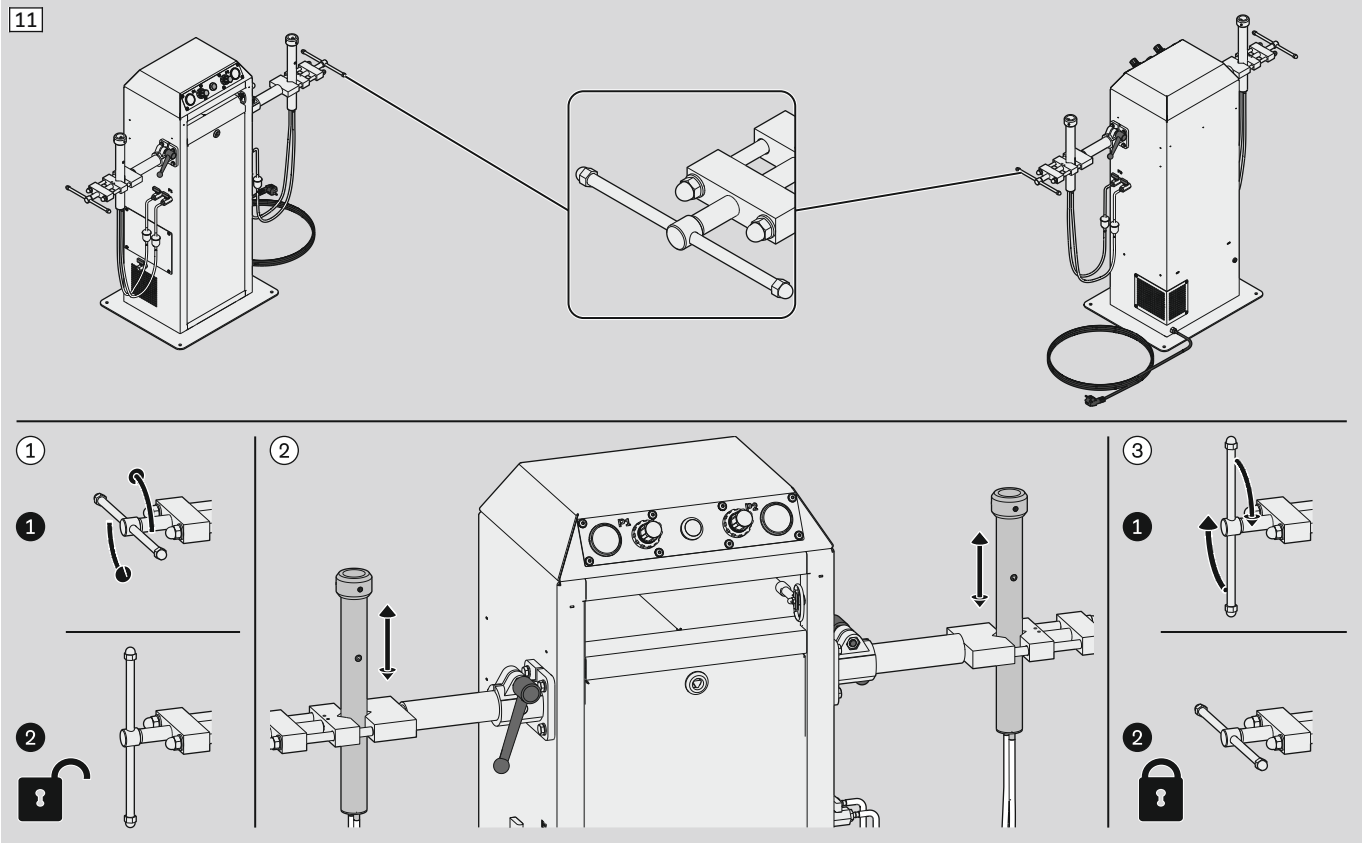
2.3.1.4 Condensate drain ball valve



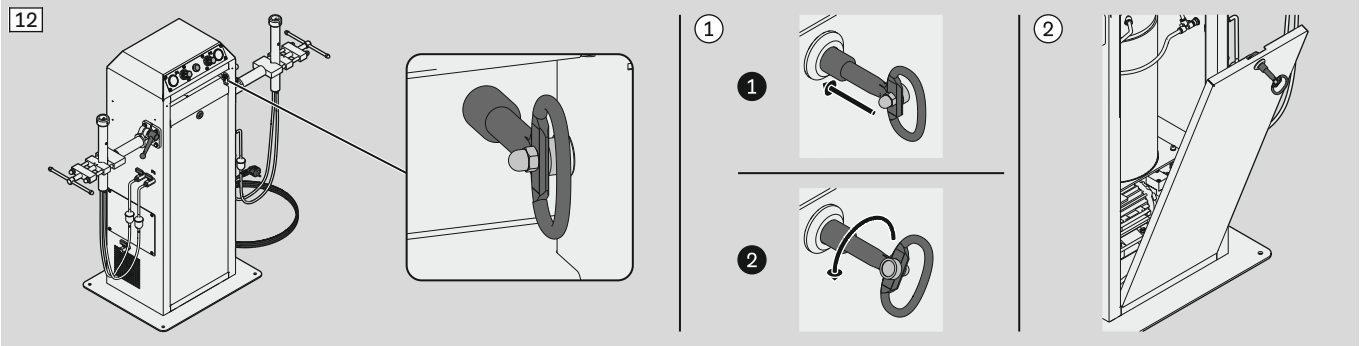
2.3.1.5 Clamping lever



2.3.1.6 Locking lever

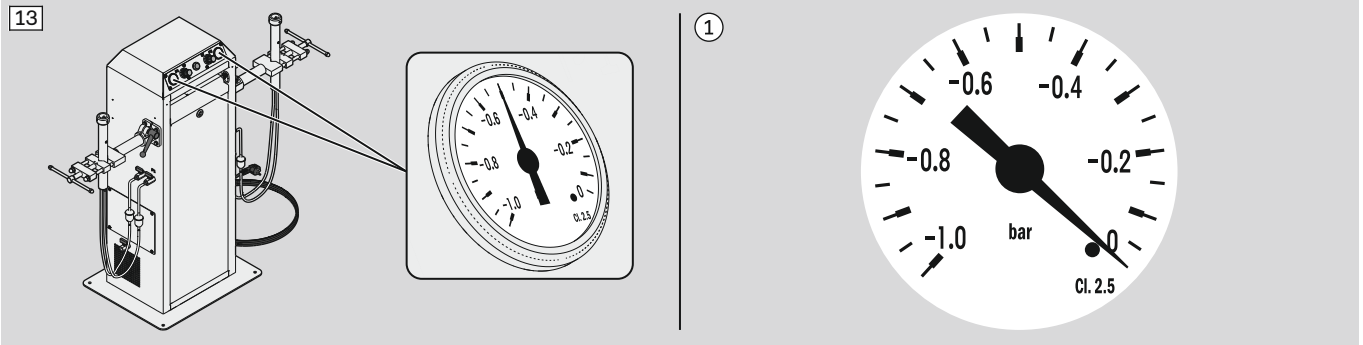


2.3.1.7 Triangular key

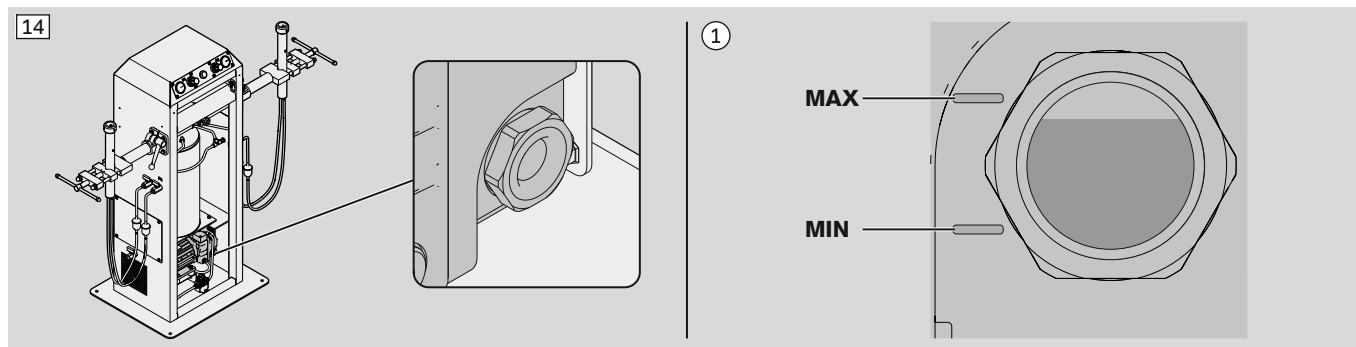


2.3.2 Indicator elements

2.3.2.1 Pressure gauge



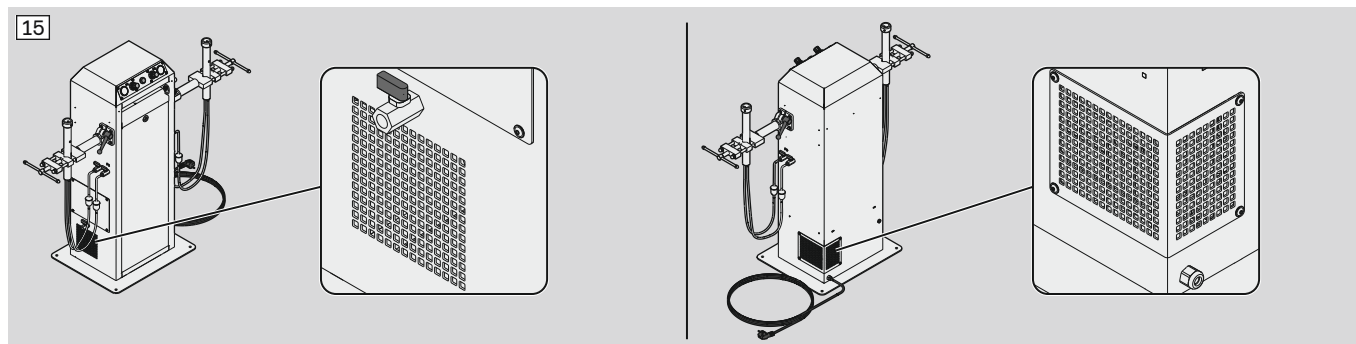
2.3.2.2 Viewing window for oil level



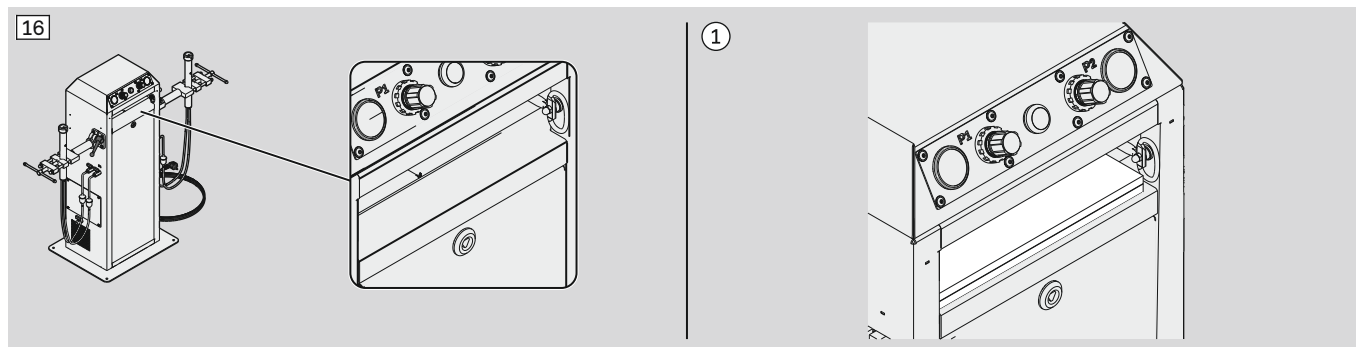
2.3.3 Special product components

2.3.3.1 Air exhaust grid

NOTICE! Covering of the air grids is prohibited.



2.3.3.2 Storage pocket for operating instructions



3 Safety

Staff selection

It is critical to safety that the respective product-related tasks be carried out by the intended staff specified in this document.

Staff is divided into the following groups in this document:

- **Operating staff**
This term refers to staff operating the product.
- **Specialist staff**
This term refers to staff required to carry out specific product-related tasks due to their specialised knowledge.
- **Service technicians**
This term refers to staff foreseen for maintenance and repair tasks (chapter "Repair" - see Page 37).

WARNING

Incorrect staff selection

Personal injury and material damage through deployment of inappropriate staff

- ▶ Deploy only staff specified in this document for the respective tasks.

Product safety concept

In order to be able to work safely with the product the user must be aware of the hazardous areas and must observe the precautions.

The hazardous areas of the product are described in the following chapter. For each hazardous area precautionary measures are specified.

The precautionary measures encompass the following points:

- product's safety devices
- personal protective equipment.

WARNING

Disregard of hazardous areas and precautions

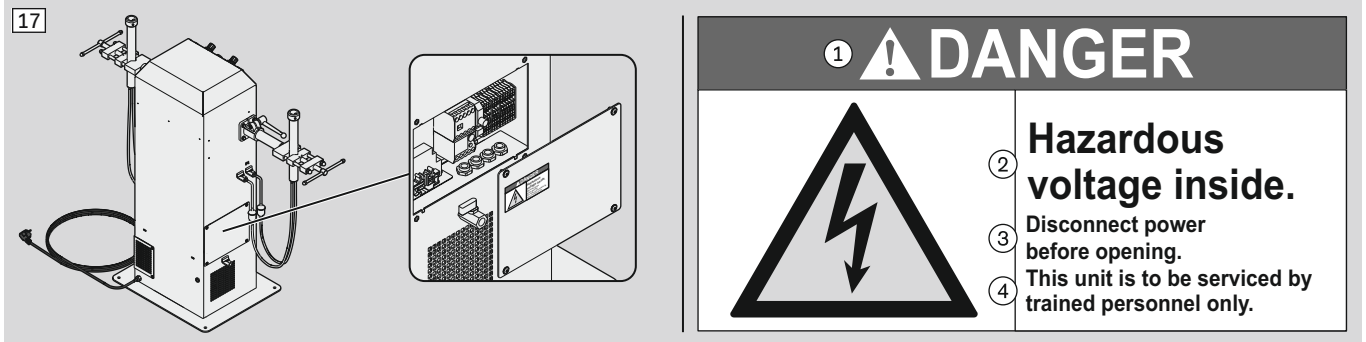
Personal injury and material damage due to unsafe work practices

- ▶ Familiarise yourself with the product's hazardous areas.
- ▶ Do not operate the product without the foreseen safety devices.
- ▶ Use the appropriate personal protective equipment for the given task.

3.1 Hazardous areas and precautions

3.1.1 Hazardous area 1

High voltage



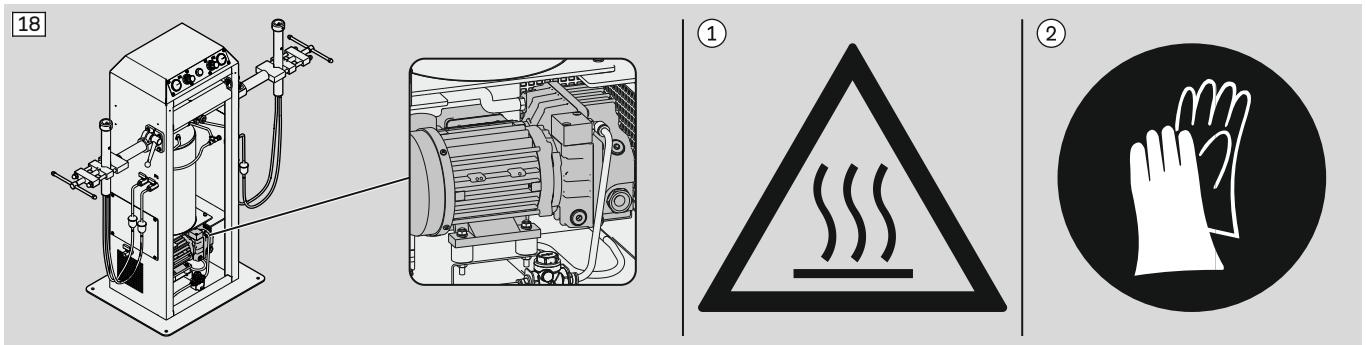
DANGER! ①; Hazardous voltage inside ②; Disconnect power before opening. ③; This unit is to be serviced by trained personnel only. ④

Product safety devices: Cover plate

► Observe the safety notice on the cover plate.

3.1.2 Hazardous area 2

Hot surface

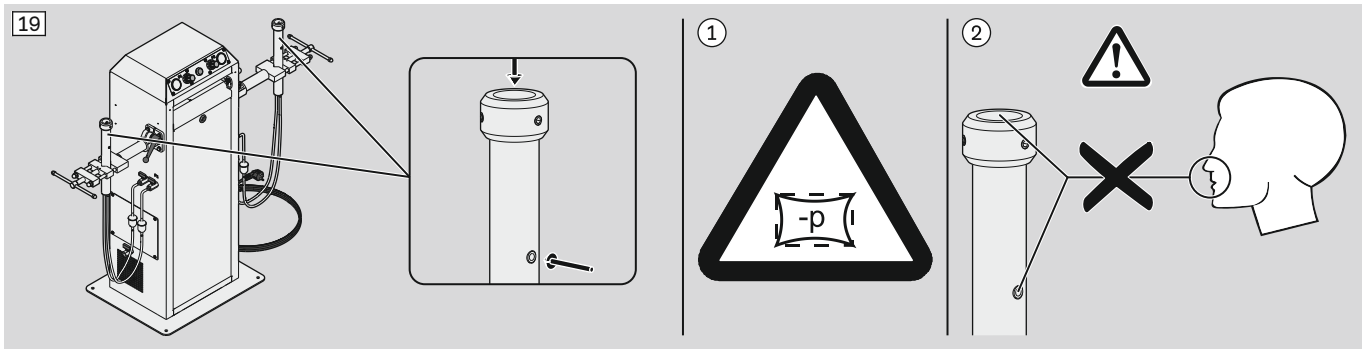


Product safety devices: Safety instruction label "Hot surface" ①

► **Personal protective equipment:** Wear protective gloves ②

3.1.3 Hazardous area 3

Negative pressure

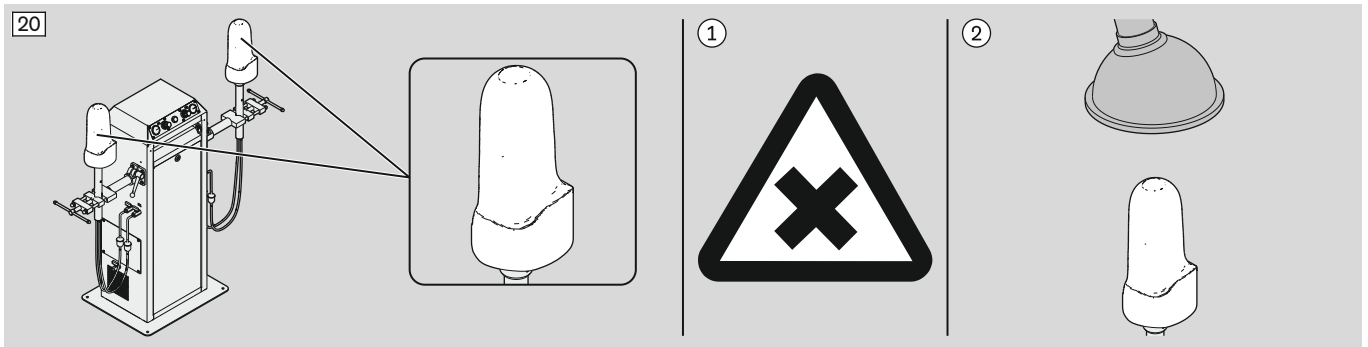


Warning symbol: Warning of negative pressure ①

► Protect mouth and nose from negative pressure.. ②

3.1.4 Hazardous area 4

Harmful or irritating substances

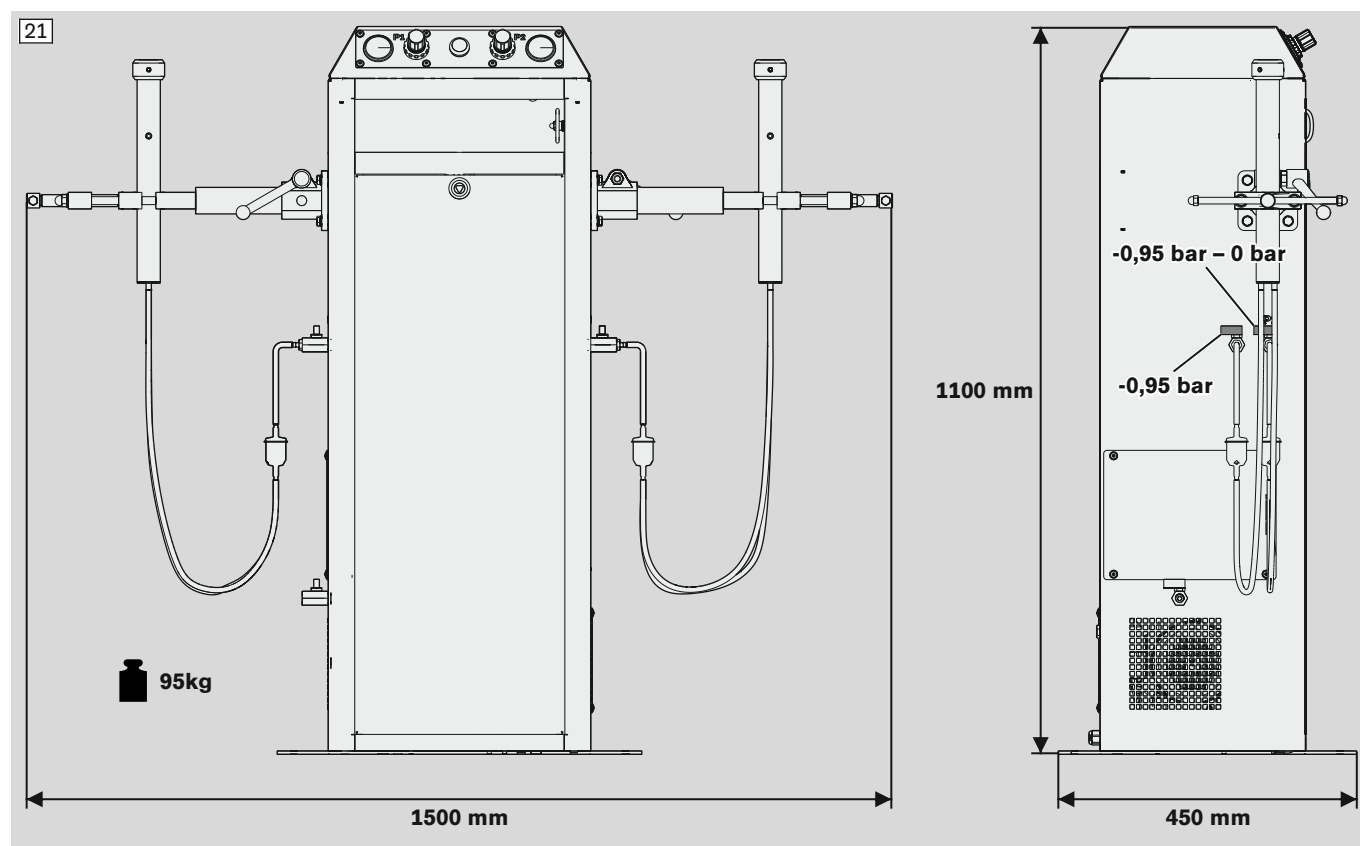


Warning symbol: Warning of negative pressure ①

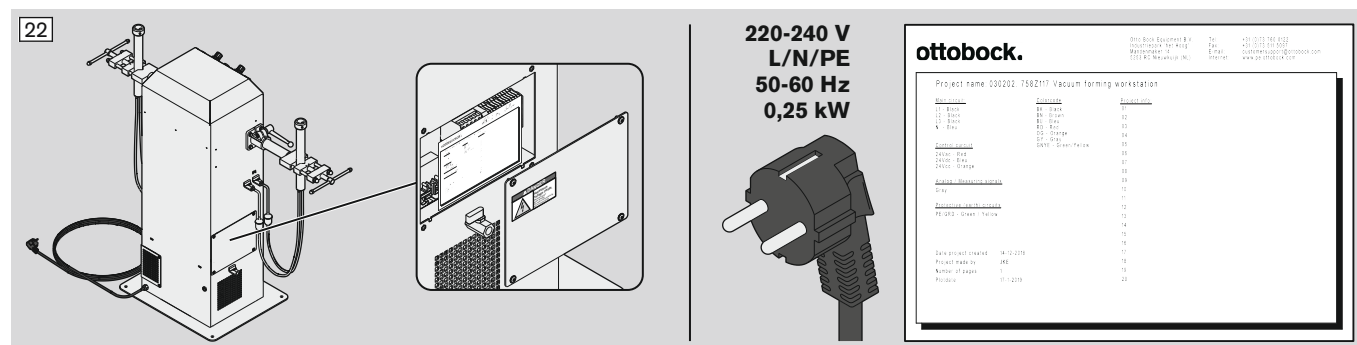
► Protect mouth and nose from negative pressure.. ②

4 Technical data

4.1 Dimensions and weight



4.2 Electrical data



5 Transport

WARNING

Standing under suspended loads

Death or severe injury due to falling or tipping product

- ▶ Make sure there is no one in the region of suspended loads during transport.



> **Required staff:**

specialist staff for transport

Required personal protective equipment:

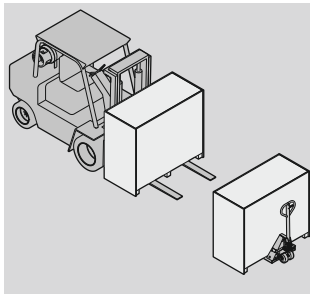
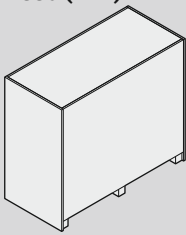
safety boots

- ▶ **WARNING! Carry out transport with the required staff and required personal protective equipment only.**

- ▶ **WARNING! Be aware of that the product is top-heavy during transport (centre of gravity).**

Observe the transport symbols on the transport crate (explanation in chapter "Transport and storage pictograms" - see Page 41).

1560x720x1330 (mm)
140 kg



- ▶ For transport and lifting use means of transport (e.g. crane with hoist, forklift truck and pallet jack) of sufficient lift capacity (chapter "Dimensions and weight" - see Page 17).

6 Storage



- ▶ For storage observe the technical data in the chapter "Environmental conditions" (see Page 17).
- ▶ Protect the product from moisture and extreme temperature fluctuations.
- ▶ To prevent the product being contaminated during storage leave it in the transport crate or cover it with a protective film.

7 Unpacking



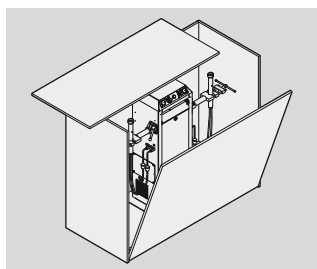
- > **Required staff:**
specialist staff for transport
- Required personal protective equipment:**
safety boots
- ▶ **WARNING! Carry out transport with the required staff and required personal protective equipment only.**

NOTICE

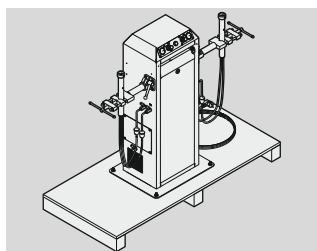
Lifting the product at unsuitable points

Damage to the product due to deformation and tipping

- ▶ Lift the product at the housing base between the legs only (e.g. using a forklift truck).
- ▶ When lifting ensure that the product cannot tip over.



- ▶ Remove the top and side panels of the transport crate.

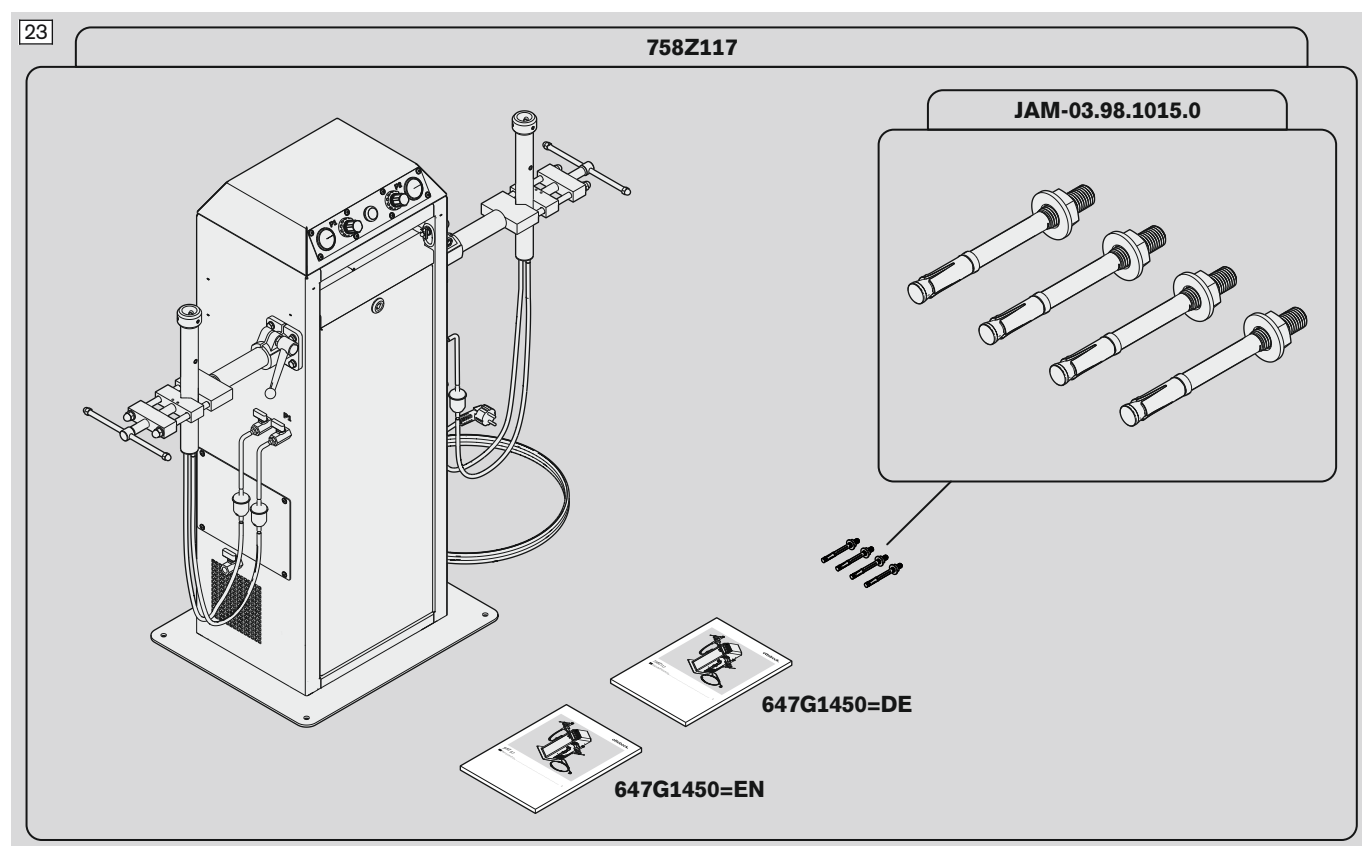


- ▶ Unscrew the screws fastening the product to the pallet.
- ▶ Lift the product from the transport pallet using a lifting means such as a forklift truck of sufficient lift capacity.
- ▶ Transport the product to the location of installation.
- ▶ Keep the packaging material for reuse or dispose of in an environmentally friendly manner according to the regulations of the user country.

7.1 Checking the delivered items

- Check the delivery for completeness.

The following products are included in the delivery:

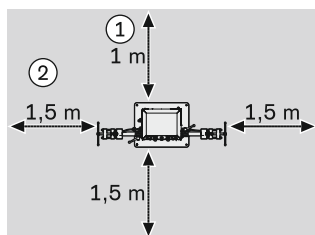
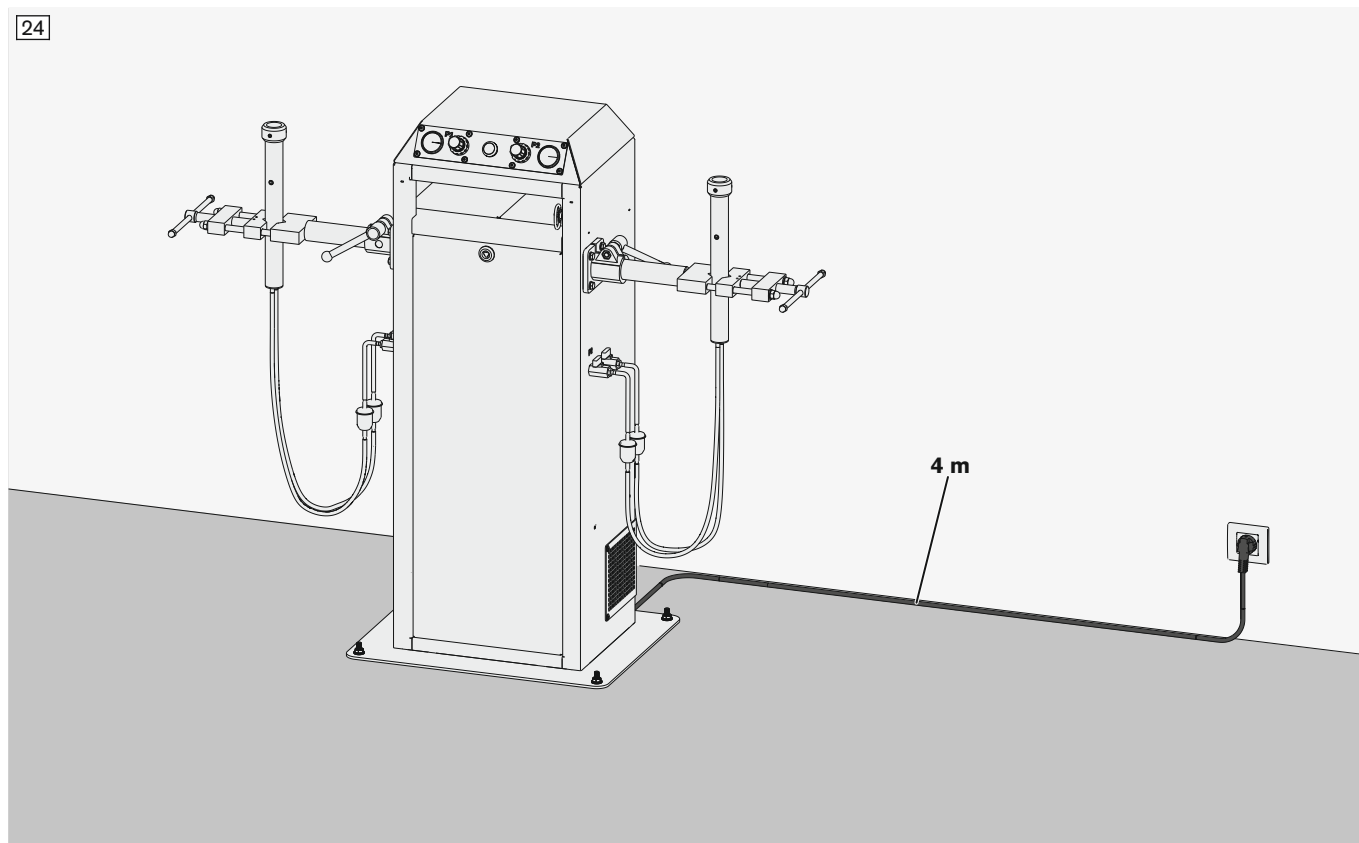


8 Positioning



- > **Required staff:**
specialist staff for transport
- Required personal protective equipment:**
safety boots
- ▶ **WARNING! Carry out transport with the required staff and required personal protective equipment only.**

24



- ▶ When selecting the installation location maintain the recommended minimum distances to the walls - the dimensions ① and ② may be smaller than specified if space is insufficient.
- INFORMATION: This facilitates work in connection with use, cleaning and maintenance.**



- > **Required staff:**
several people
- ▶ **WARNING! When transporting the product ensure that it does not tip over.**
Transport the product to the location of installation.

9 Installation

- **CAUTION! Deploy the following staff for this work:**
operating staff, specialist staff or service technicians.

9.1 Installation of the product on the floor

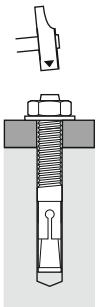
- Reach through the holes in the product legs to mark the drill hole locations on the floor.



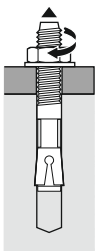
- > **Required staff:**
several employees with specialised transport and setup knowledge
- > **Required equipment and materials:**
drill, drill tip Ø 10 mm, fastening set for machine (4 anchors with washers and nuts), hammer, torque spanner, insulating mat (optional)
- > **Required tightening torque for the anchor nuts (17 mm):**
30 Nm
- > **Required substrate:**
non-cracked concrete
- **INFORMATION: For other substrates other screws and screw anchors must be used.**



- 1) **Optional:**
Place an insulating mat under the product.
- 2) Drill the holes into the floor (drilling depth = anchor length).
- 3) Remove any debris from the drill holes using a vacuum cleaner.

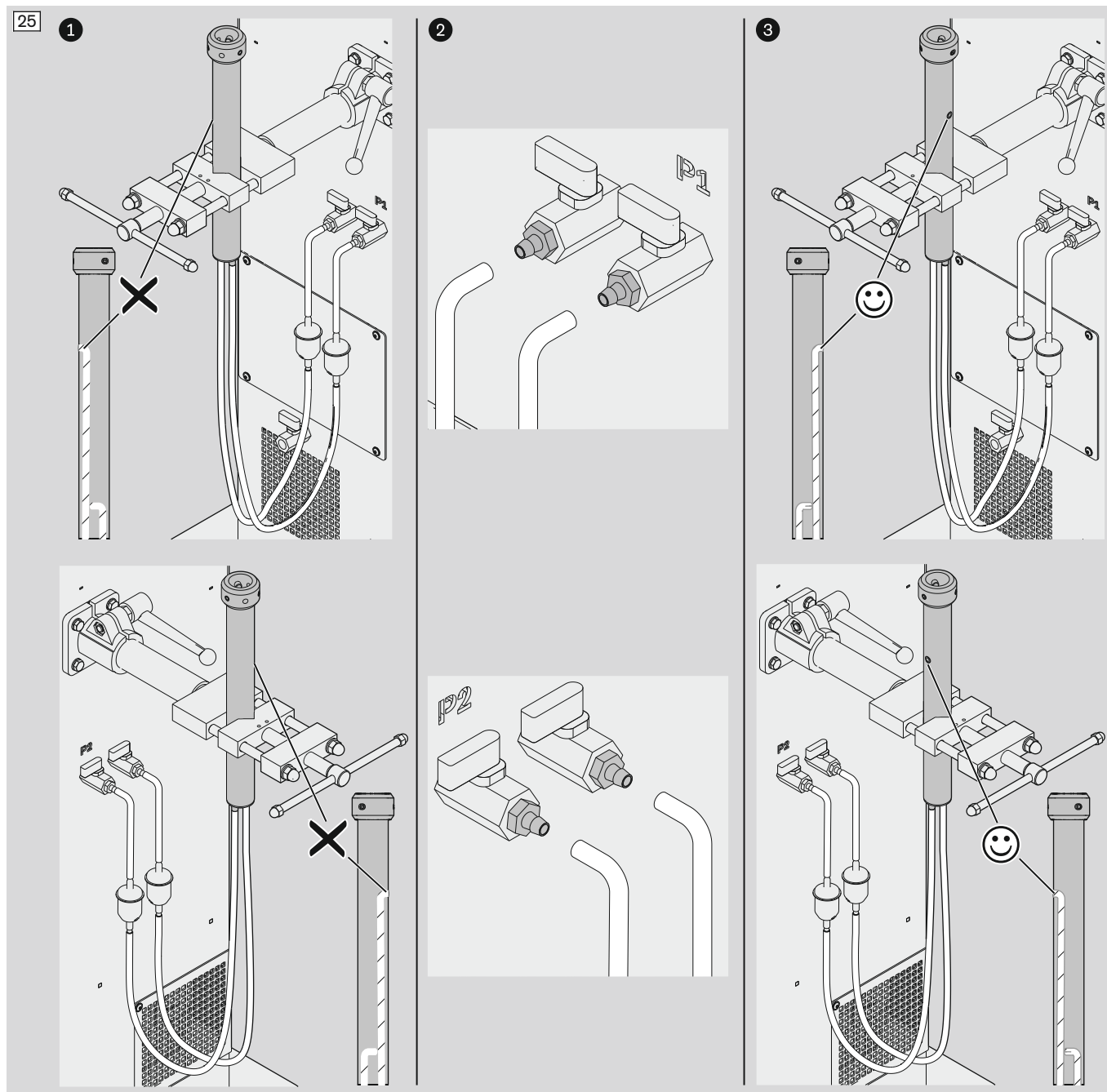


- 1) Position the nut at the top end of the anchor.
- 2) Hammer the anchor into the drill hole until the nut with the washer is lying against the machine leg.

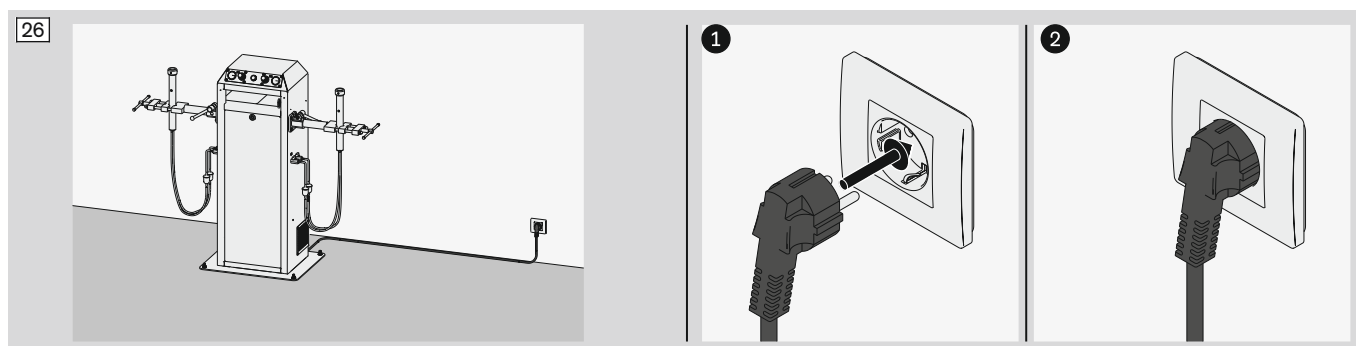


- Tighten the nut to the required torque.

9.2 Checking and correcting the installation of the vacuum hoses



10 Initial operation



10.1 Optional: Installation of another mains plug

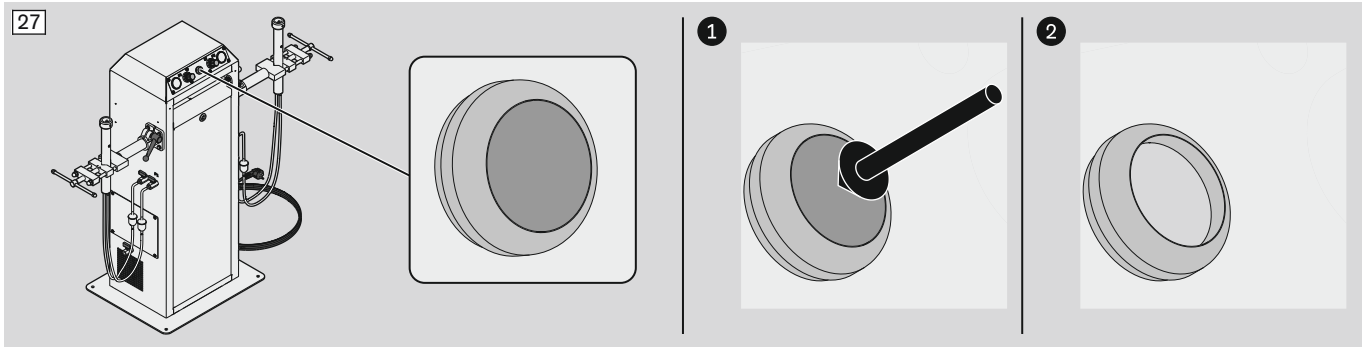


- > **Required staff:**
specialist staff for electrical installation
- Required mains plug:**
mains plug (L/N/PE)
- ▶ **WARNING!** The installation of another mains plug has to be carried out by the required personnel with the required mains plug only.

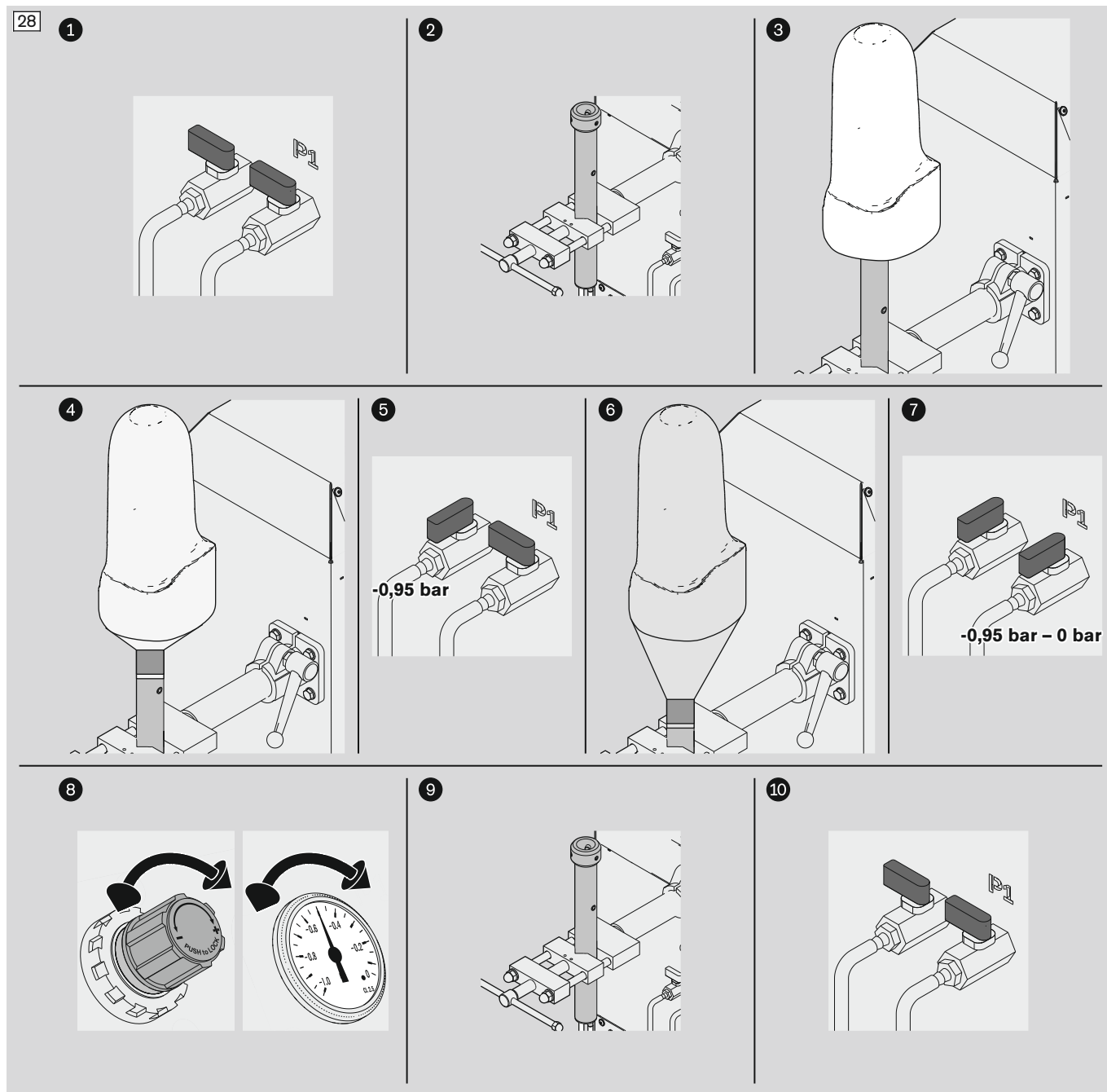
11 Operation

- ▶ **INFORMATION:** Deploy the following staff for this work:
operating staff

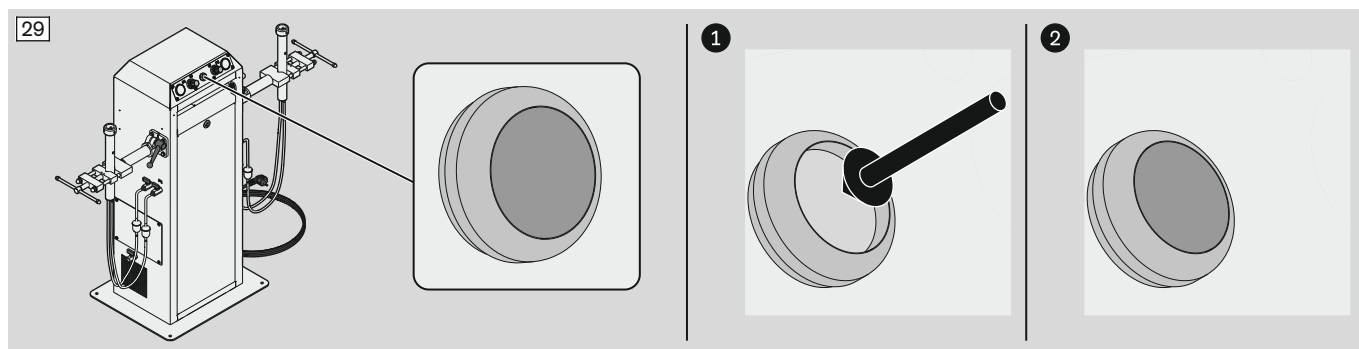
11.1 Switching on the product



11.2 Laminating



11.3 Switching off the product



11.4 Cleaning

⚠ CAUTION

Poor cleaning of the floor in the workspace

Injury due to slipping on dirty floor

- ▶ Clean the floor if dirty.

NOTICE

Improper cleaning

Damage to product due to use of improper cleaning agents

- ▶ Do not use any aggressive cleaning agents.
- ▶ Do not use water or pressure washers.
- ▶ Do not use compressed air.
- ▶ Use a suitable vacuum cleaner for dust and chips.

Cleaning light soiling

- 1) Clean the product with a damp, soft cloth.
- 2) Dry the product with a soft cloth.
- 3) Allow to air dry in order to remove residual moisture.

Cleaning heavier soiling

> **Required materials:** Cleaning cloth, 634A58 Isopropyl Alcohol, soft cloth

- 1) **NOTICE! Verify material compatibility! Do not remove lubricant from bearing points!**
Clean the product with a cleaning cloth and isopropyl alcohol.
- 2) Dry the product with a cloth.

12 Troubleshooting

FAULT		PROBABLE CAUSE		SUGGESTED REMEDY
Motor not starting		Power supply fault		Have qualified personnel with the appropriate electrical expertise remedy the fault
		Fuse defective		Replace fuse
		Motor protection switch activated due to overheating		After a cooling phase (approx. 20 min) the fault indicator automatically resets

13 Maintenance

Product maintenance encompasses the following areas:

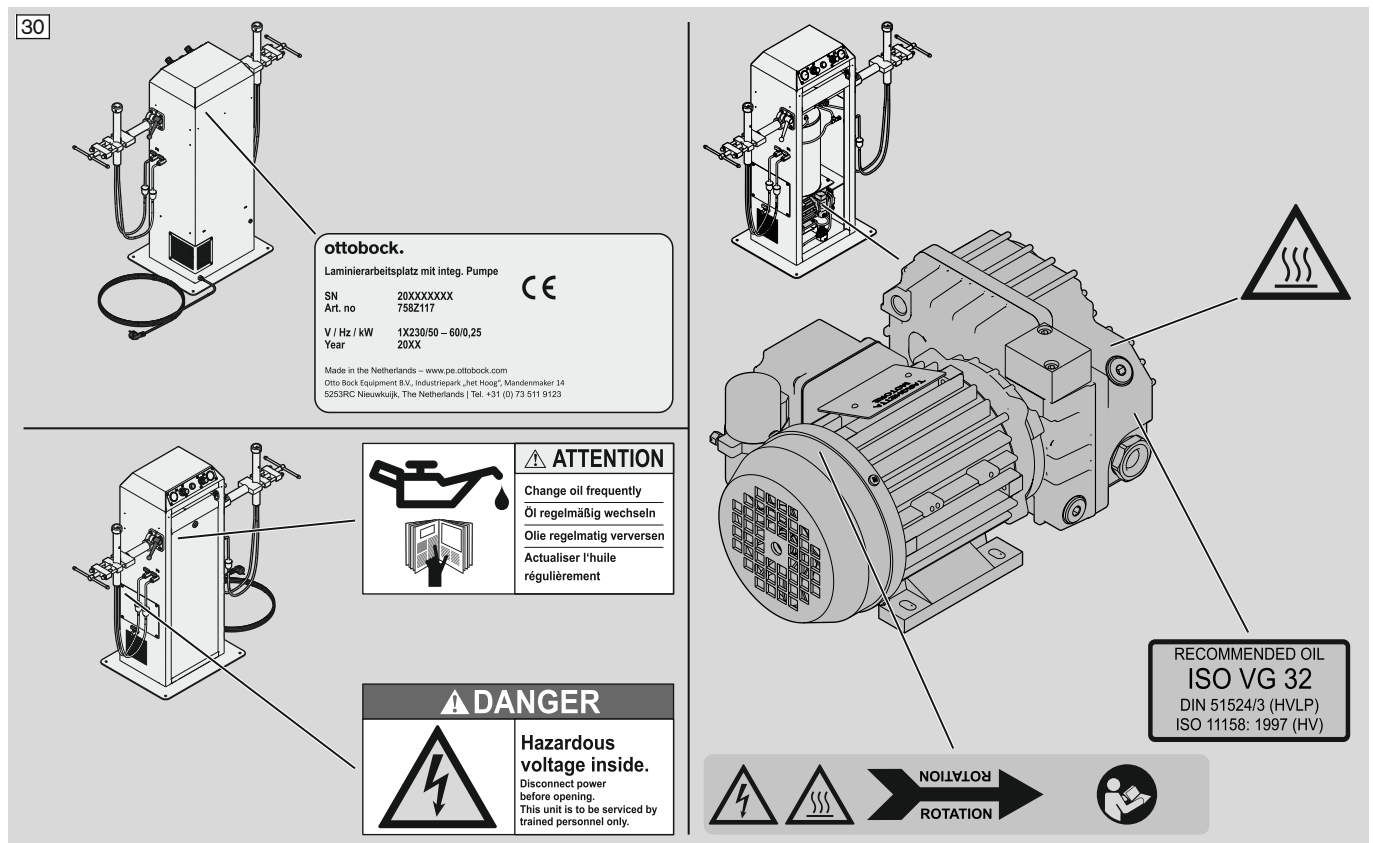
- **Inspection**
During the inspection the product is checked to determine whether it is in good condition.
- **Maintenance**
During maintenance actions are taken to maintain the good condition of the product.
- **Repair**
Repair refers to repair measures taken to restore the product to good condition.

Maintenance plan

Inspection					
Section	daily	weekly	monthly	half-yearly	yearly
13.1.1 Checking the nameplate and the labels (see Page 28)	X				
13.1.2 Checking the cables (see Page 29)	X				
13.1.3 Checking the lamps (see Page 30)	X				
13.1.4 Checking the oil level (see Page 30)	X				
13.1.5 Checking the vacuum filters (see Page 31)	X				
Maintenance					
Section	daily	weekly	monthly	half-yearly	yearly
13.2.1 Changing the vacuum filters (see Page 32)				X	
13.2.2 Changing the oil (see Page 33)				X	
13.2.3 Changing the oil filter (see Page 34)					X
13.2.4 Draining condensate (see Page 35)		X			
13.2.5 Changing the fuse (see Page 36)	In case of defective fuse				

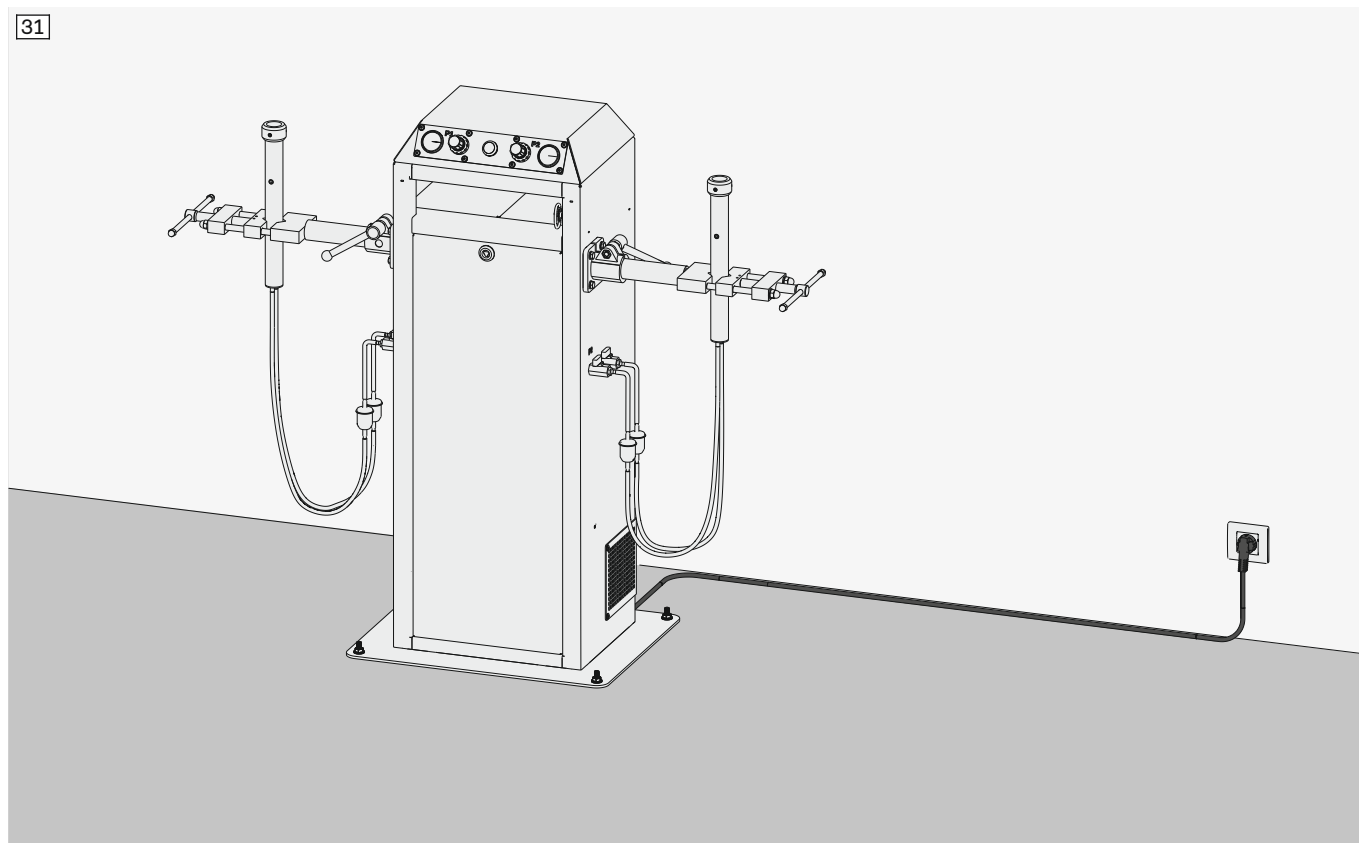
13.1 Inspection

13.1.1 Checking the nameplate and the labels



- ▶ **NOTICE! Deploy the following staff only for these inspection tasks:** operating staff, specialist staff or service technicians.
- ▶ Carry out the following inspections **daily**:
- ▶ Clean the nameplate and the labels if soiled.
- ▶ Replace labels as required.
- ▶ Order any missing labels from the manufacturer and attach to product.

13.1.2 Checking the cables



► **WARNING! Deploy the following staff only for these inspection tasks:**

Inspection:

operating staff

Repair:

specialist staff or service technicians

► Carry out the following inspections **daily**:

► Pull the plug out of the socket.

► Check the cable for damage.

► **In case of damage:**

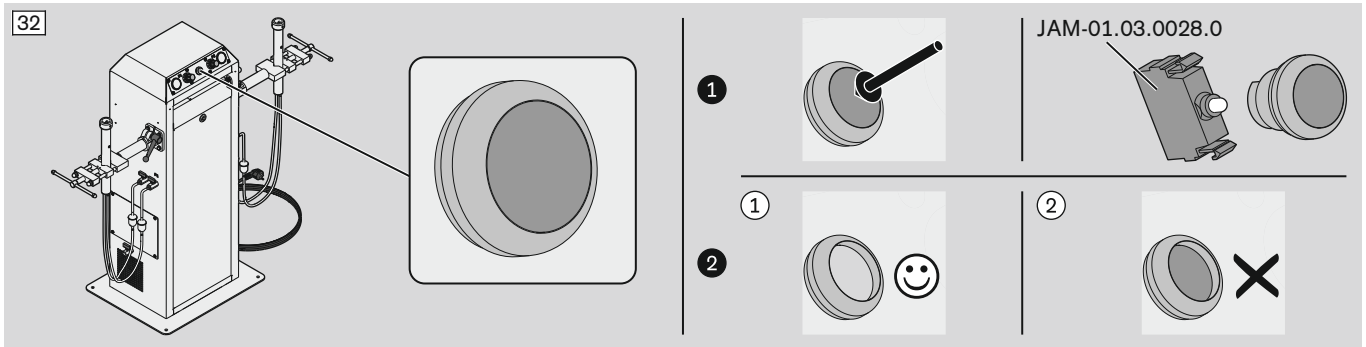
Shut down the product (do not insert the mains plug again!).

Have the damage inspected by specialist staff (electrician).

► **In case of no damage:**

Insert the plug into the socket.

13.1.3 Checking the lamps



► **WARNING! Deploy the following staff only for these inspection tasks:**

Inspection:

operating staff

Repair:

specialist staff or service technicians

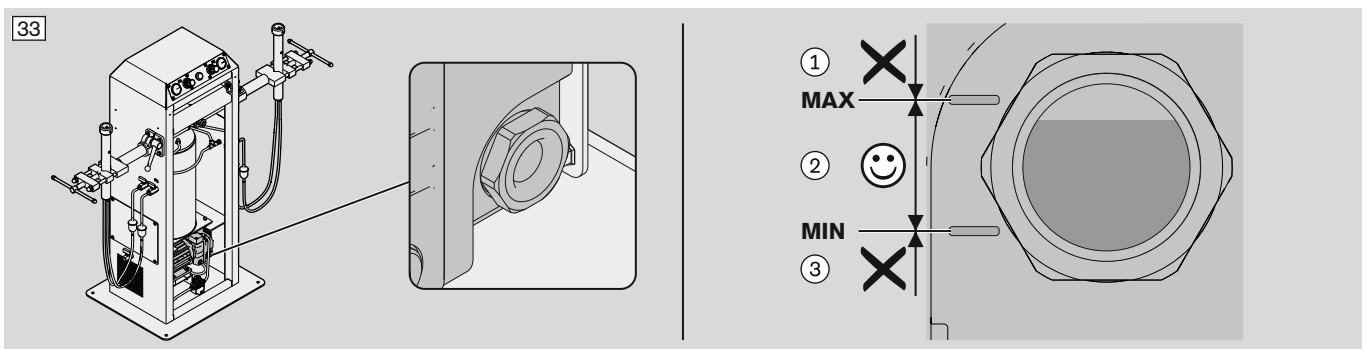
► Carry out the following inspections **daily**:

► Check whether after switch-on the lamp illuminates.

► **In case of defective lamp:**

Have the defective lamp replaced by specialist staff (electrician) or a service technician.

13.1.4 Checking the oil level



► **WARNING! Deploy the following staff only for these inspection tasks:**

Inspection:

operating staff

► Carry out the following inspections **daily**:

► Check whether the oil level is between MIN and MAX.

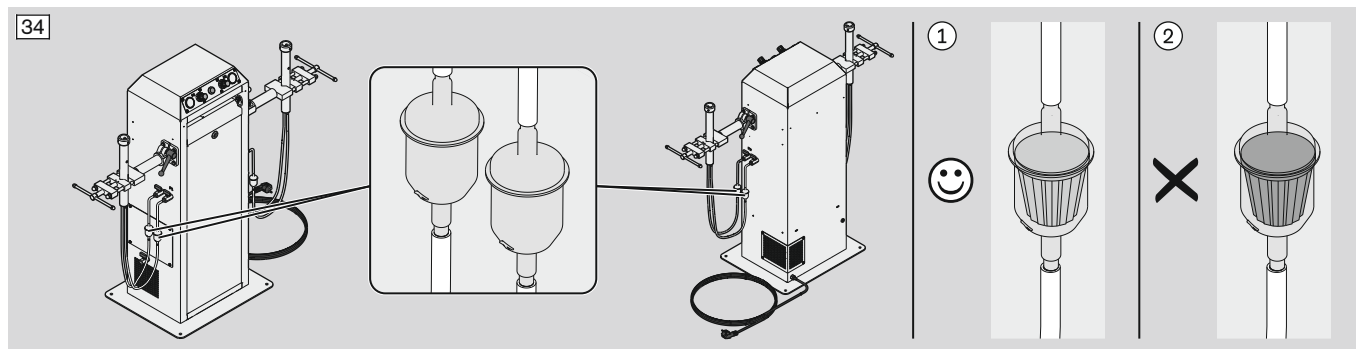
► **In case of too much oil:**

Drain the oil (section "Changing the oil" – see Page 33).

► **In case of too little oil:**

Refill oil (section "Changing the oil" – see Page 33).

13.1.5 Checking the vacuum filters



► **WARNING! Deploy the following staff only for these inspection tasks:**

Inspection:

operating staff

► Carry out the following inspections **daily**:

► Check whether the vacuum filters are very dirty ②.

► **In case of very dirty vacuum filters:**

Change the vacuum filters (section "Changing the vacuum filters" – see Page 32).

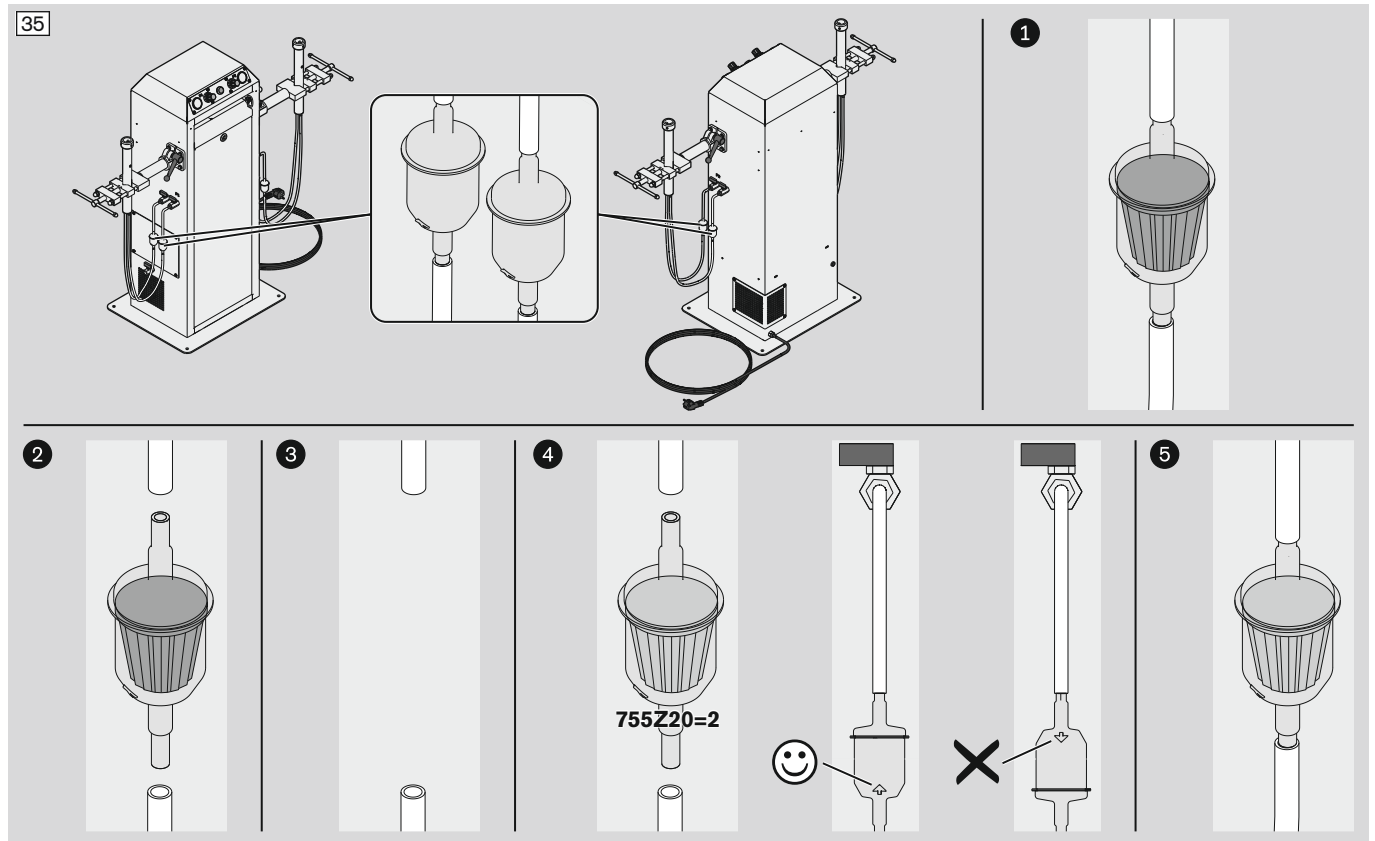
13.2 Maintenance

INFORMATION

Depending on the user country there may be differing regulations pertaining to inspection, maintenance and other tests.

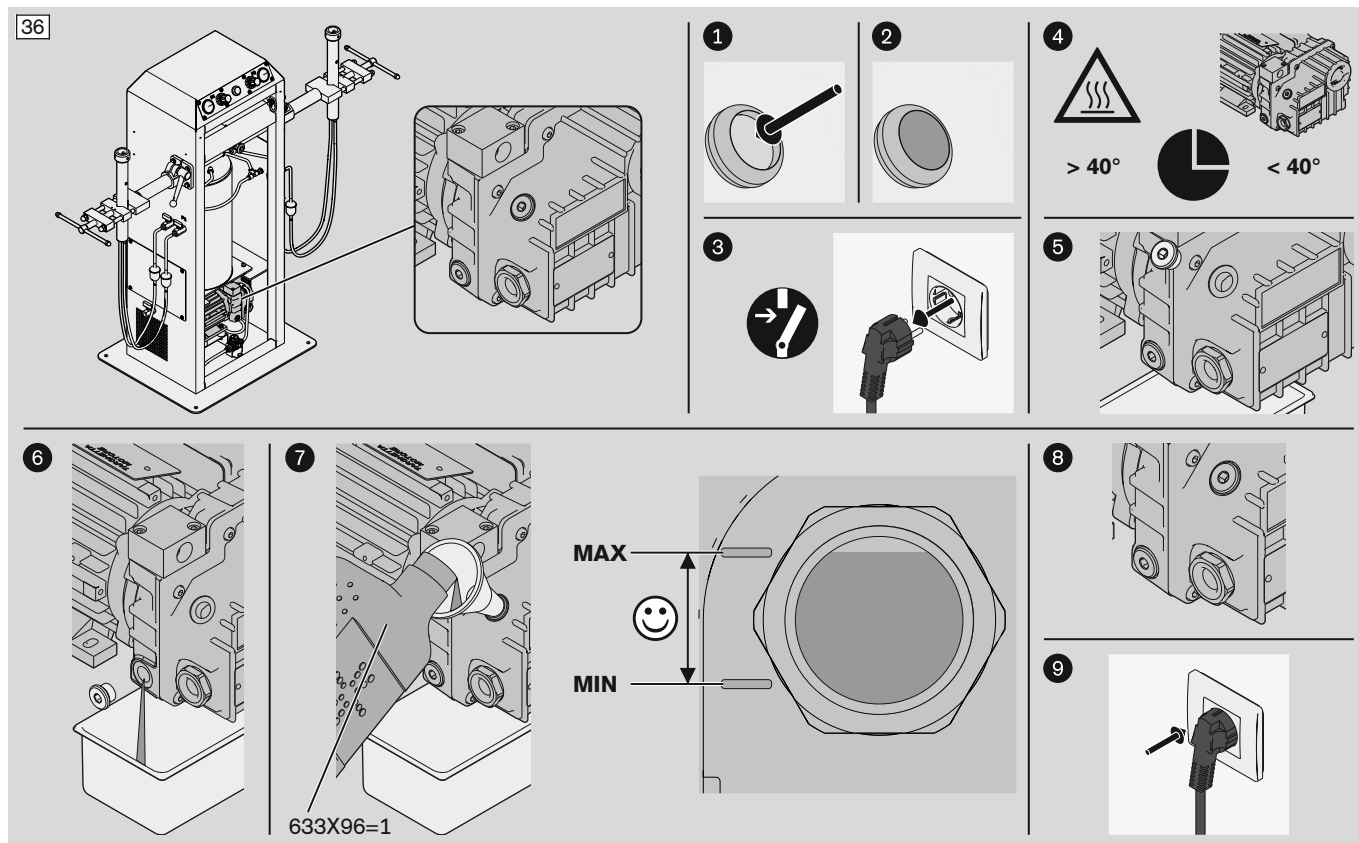
► Please observe all of your country's regulations that apply to operation of the product.

13.2.1 Changing the vacuum filters



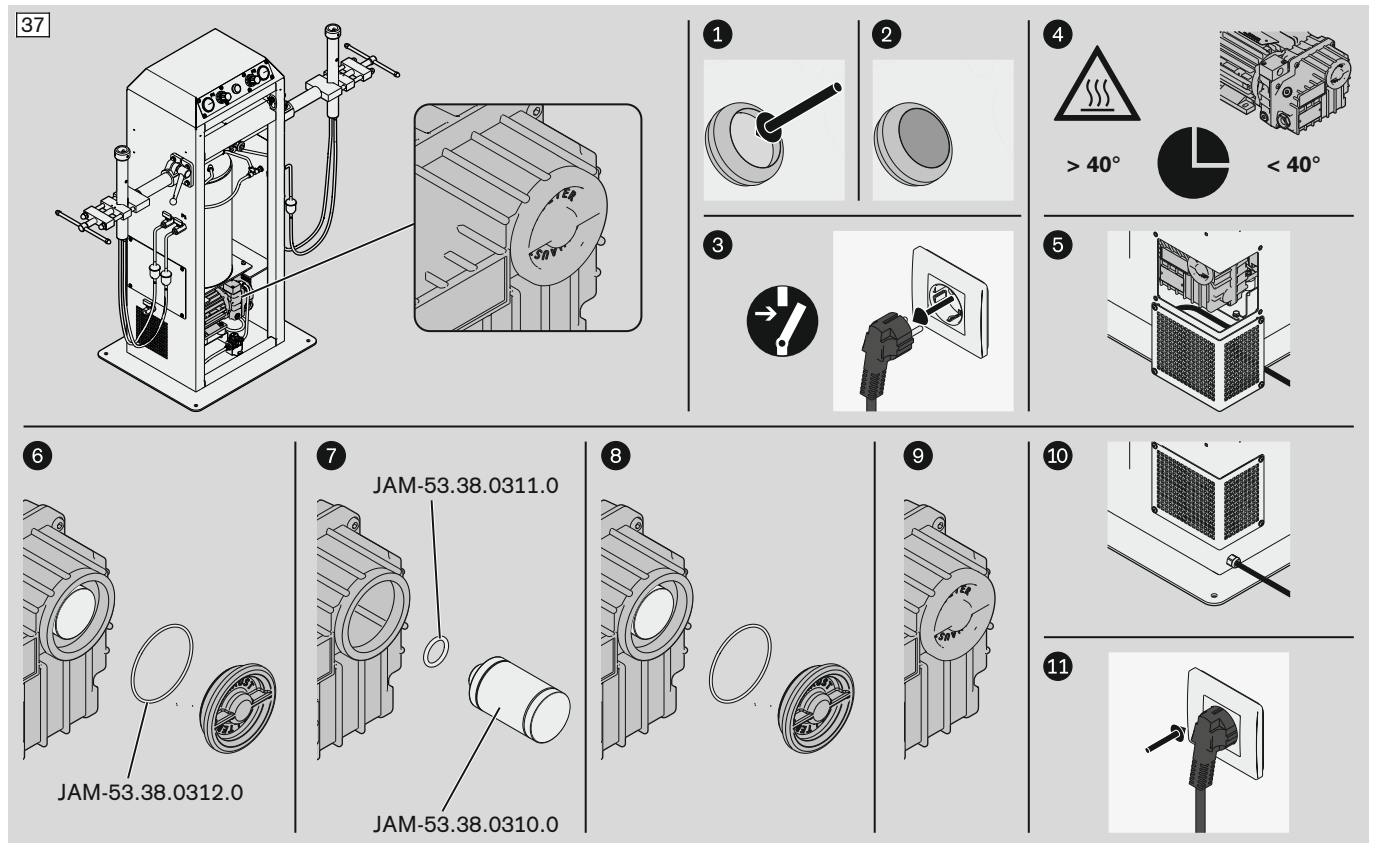
- **WARNING! Deploy the following staff only for this maintenance work:**
specialist staff or service technicians
- In case of heavier soiling or at least **every six months** carry out the following maintenance work:
- Change the vacuum filters according to the illustration. Pay attention to the permissible flow direction.

13.2.2 Changing the oil



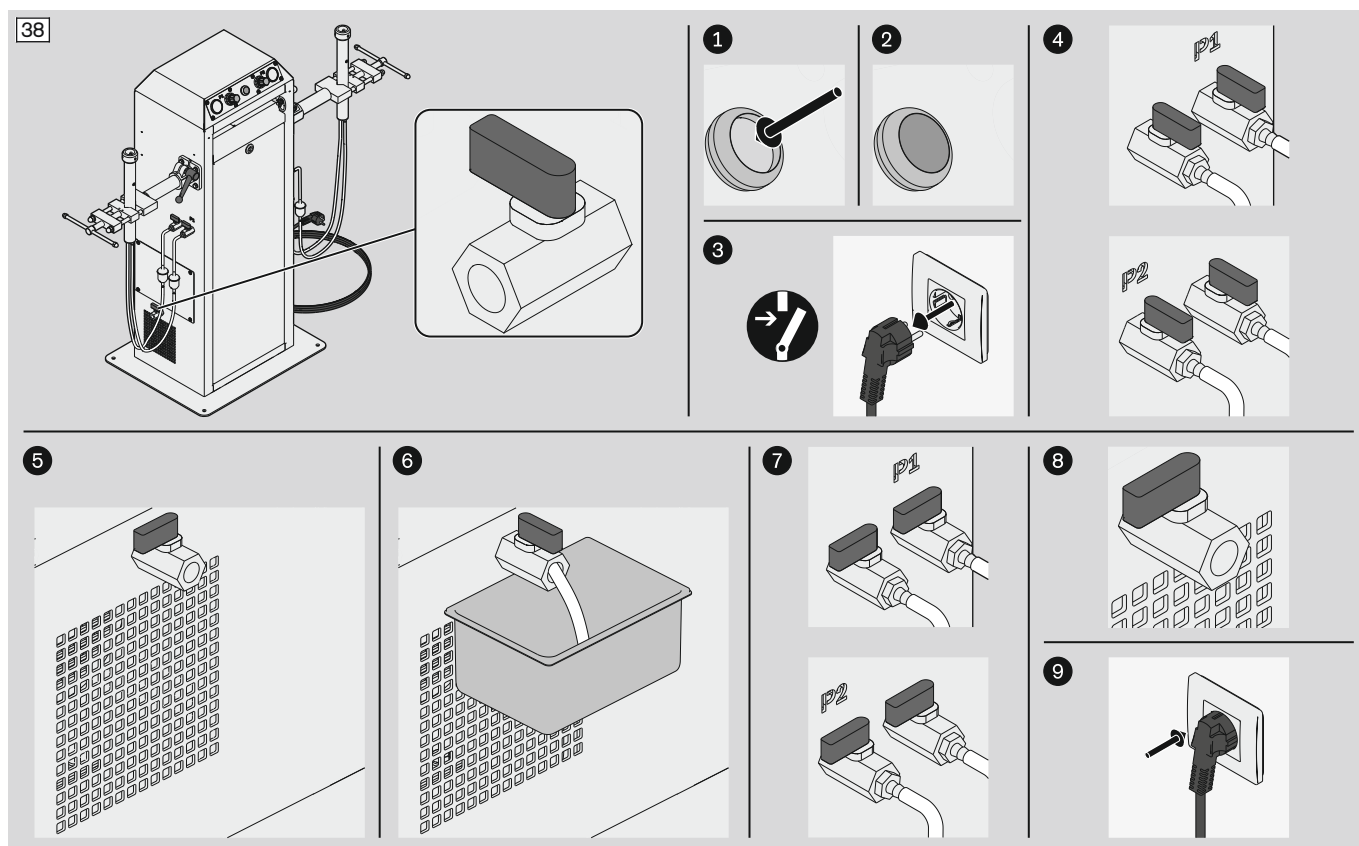
- **WARNING! Deploy the following staff only for this maintenance work:**
specialist staff or service technicians
- Carry out the following maintenance work **every six months**:
- Change the oil according to the illustration.

13.2.3 Changing the oil filter



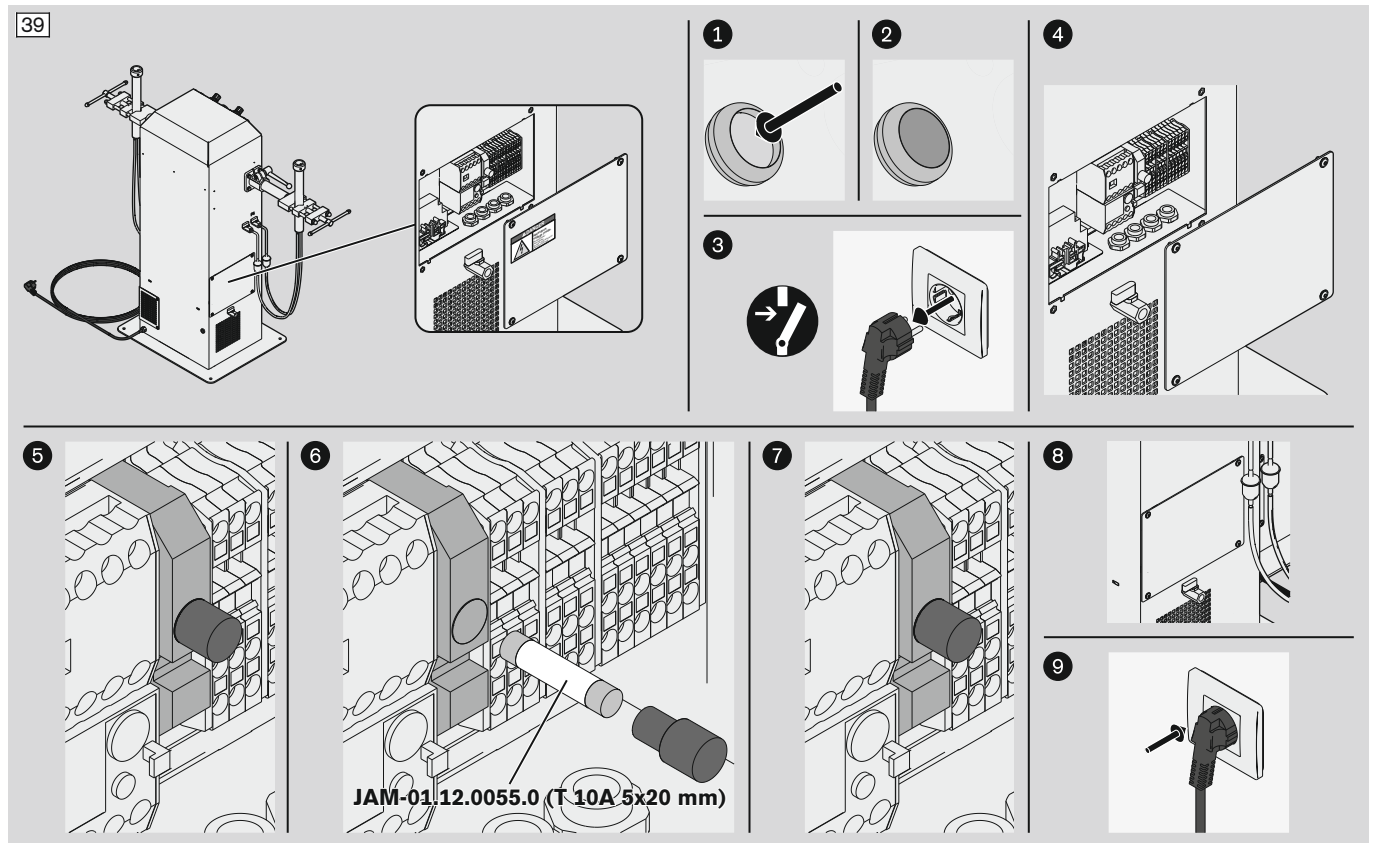
- ▶ **WARNING! Deploy the following staff only for this maintenance work:**
specialist staff or service technicians
- ▶ Carry out the following maintenance work **every year**:
- ▶ Change the oil filter according to the illustration.

13.2.4 Draining condensate



- ▶ **WARNING! Deploy the following staff only for this maintenance work:**
specialist staff or service technicians
- ▶ Carry out the following maintenance work **weekly**:
- ▶ Drain the condensate according to the illustration.

13.2.5 Changing the fuse



- ▶ **WARNING! Deploy the following staff only for this maintenance work:**
specialist staff or service technicians
- ▶ In case of defective fuse carry out the following maintenance work:
- ▶ Change the fuse according to the illustration.

13.3 Repair

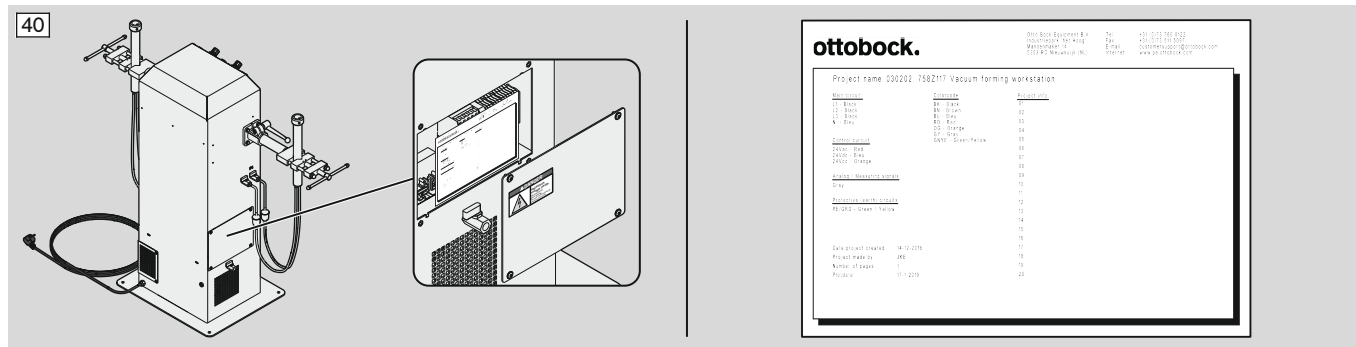
⚠ WARNING

Repair by inappropriate employee

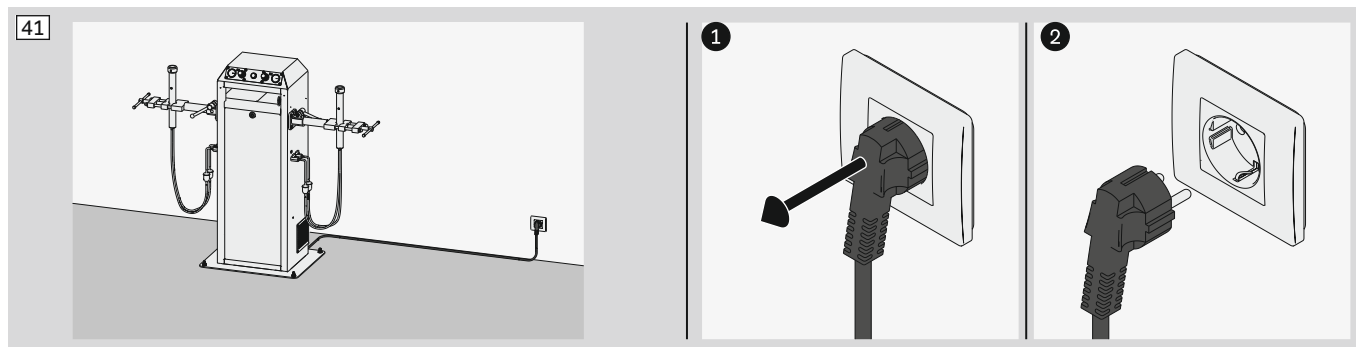
Death and serious injury as well as damage to the product due to insufficient expertise

- Repair work may only be carried out by a service technician authorised by the manufacturer.

13.4 Electrical diagram



14 Putting out of operation



15 Disassembly

INFORMATION

Disassembly is carried out in the opposite order to installation (see Page 22) and positioning (see Page 21).

16 Packaging

INFORMATION

Packaging such as that used for initial delivery is recommended for transport.

17 Disposal

INFORMATION

This product may not be disposed of with regular domestic waste in all jurisdictions. Disposal that is not in accordance with the regulations of the country where the product is used may have a detrimental impact on health and the environment. Please observe the information provided by the responsible authorities in the country of use regarding return, collection and disposal procedures.

18 Legal Information

18.1 Liability

The manufacturer will only assume liability if the product is used in accordance with the descriptions and instructions provided in this document (Operating Instructions). The manufacturer will not assume liability for damage caused by disregard of this document.

18.2 Declaration of Conformity

EC Declaration of Conformity

in accordance with EC Machinery Directive 2006/42/EC, Annex II 1.A

ottobock.

Manufacturer

Ottobock Equipment B.V.

Mandenmaker 14
5253 RC Nieuwkuijk
Netherlands

Person residing in the community and authorised to compile the relevant technical documents

Ottobock Equipment B.V.

Manager R&D
Mandenmaker 14
5253 RC Nieuwkuijk
Netherlands

Description and identification of the machine

Product	Workstation for lamination with integrated pump
Type	758Z117
Trade name	Workstation for lamination with integrated pump
Function	Workstation for lamination

This is to declare in express terms that the machine complies with all of the relevant provisions of the following EC directives.

2006/42/EC	Directive 2006/42/EC of the European Parliament and of the Council of 17 May 2006 on machinery and amending Directive 95/16/EC (amended version) (1)
2014/35/EU	Directive 2014/35/EU of the European Parliament and of the Council of 26 February 2014 on the harmonisation of the laws of the Member States relating to the making available on the market of electrical equipment designed for use within certain voltage limits
2011/65/EU	Directive 2011/65/EU of the European Parliament and of the Council of 8 June 2011 on the restriction of the use of certain hazardous substances in electrical and electronic equipment

Source of applied harmonised standards according to Article 7 paragraph 2

EN ISO 12100:2010-11	Safety of machinery - General principles for design - Risk assessment and risk reduction (ISO 12100:2010)
EN 60204-1:2006/A1:2009	Safety of machinery – Electrical equipment of machines – Part 1: General requirements

Nieuwkuijk 2018-11-22 A.H.M. Boom + J.Boers

Place Date Managing director + Manager R&D

19 Appendices



19.1 List of pictograms used




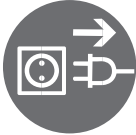

In the following subchapters the symbols and pictograms used in this document along with their meanings are given.

19.1.1 Warning symbols


	<ul style="list-style-type: none"> Hazard warning
	<ul style="list-style-type: none"> Fall hazard warning
	<ul style="list-style-type: none"> Tip hazard warning
	<ul style="list-style-type: none"> High voltage warning
	<ul style="list-style-type: none"> Harmful or irritating substances warning
	<ul style="list-style-type: none"> Trip hazard warning
	<ul style="list-style-type: none"> Slip hazard warning
	<ul style="list-style-type: none"> Warning of negative pressure

19.1.2 Mandatory symbols


	<ul style="list-style-type: none"> General mandatory symbol
	<ul style="list-style-type: none"> Observe operating instructions

	<ul style="list-style-type: none"> • Work in pairs or with a second person present
	<ul style="list-style-type: none"> • Wear protective gloves
	<ul style="list-style-type: none"> • Wear safety boots
	<ul style="list-style-type: none"> • Pull out the mains plug
	<ul style="list-style-type: none"> • De-energise prior to carrying out work

19.1.3 Prohibition symbols

	<ul style="list-style-type: none"> • Standing in the vicinity or under suspended loads prohibited
---	--

19.1.4 Transport and storage pictograms

	<ul style="list-style-type: none"> • Protect from moisture
---	---



A series of horizontal lines for writing, spanning the width of the page.



A series of horizontal lines for writing, spanning the width of the page.

