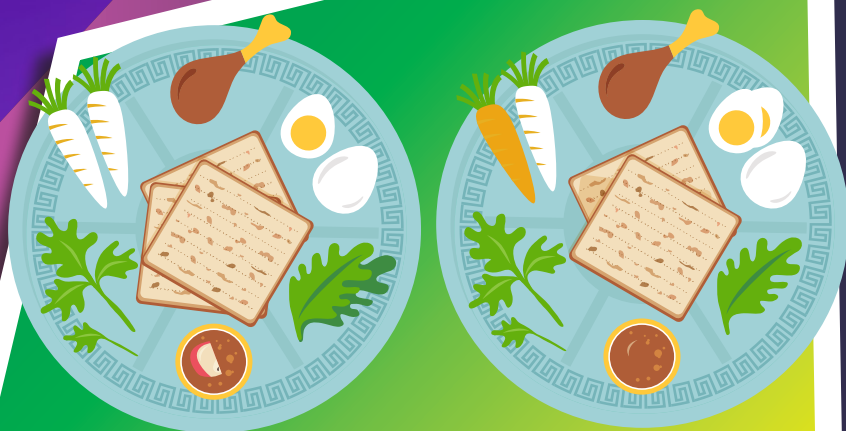


FUN Times

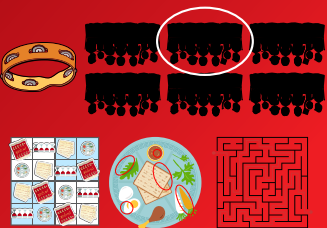
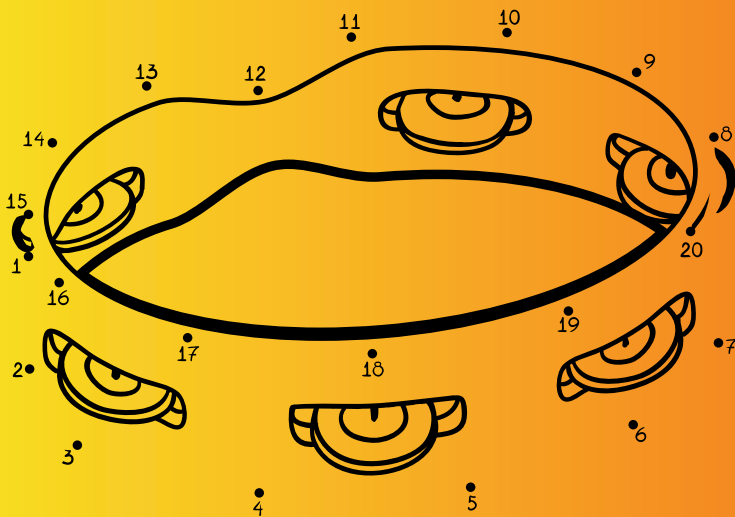


Find your way through the matzah.

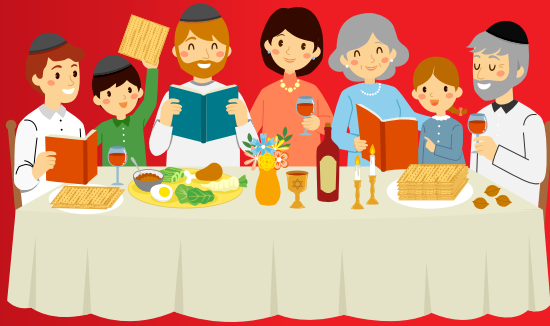


Find 5 differences.

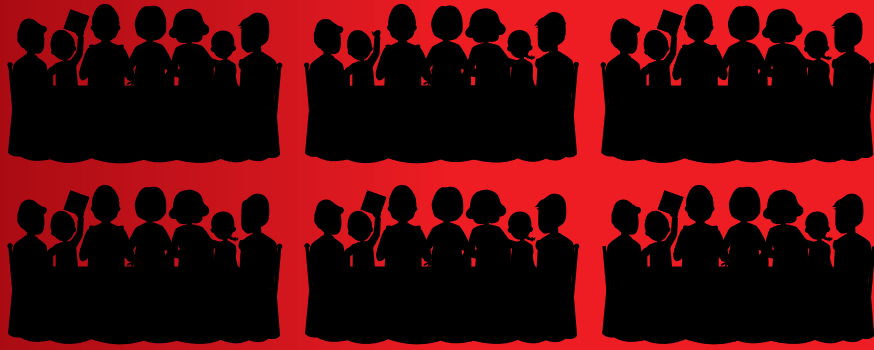
Connect the dots.



Answers:



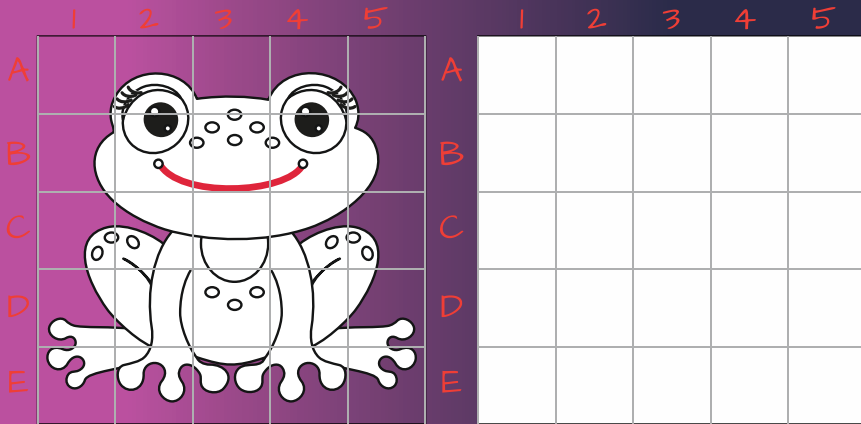
Find the correct shadow.



Complete the picture sudoku.



Copy the picture.





Escape the Zoo

Finally, Yanky's family actually went somewhere on Chol Hamoed instead of just talking about it. They made it to the zoo!

Now, his family is taking way too long looking at the lizards. Yanky is getting impatient; he's eager to see the interesting stuff! He starts to wander away from his family, making sure they are still in sight.

Then he spots a small path on his right. It leads to a slightly opened gate. He curiously heads down the path to see what's beyond the gate. As he steps through the opening, he trips on a rock and grabs the gate to regain his balance.

CLANG!

The gate is now locked — with Yanky stuck on the other side. He looks around frantically. He doesn't notice any other living company, but he is afraid to risk venturing further. What if he's alone with the elephants? Or the lions? He has to get out of there, *fast*.

Wait. There's a lock on the gate with a four-digit combination code.



CLUE 4

TO FIND THE THIRD NUMBER ON THE LOCK, SPOT THE LARGEST FAMILY IN THE ZOO. HOW MANY KIDS ARE THERE?

CLUE 1
USING THE NUMBERS FROM THE ANSWER TO CLUE 4, FILL IN ALL SIX BOXES TO CREATE A SUM OF 100. WHAT IS THE FIRST TWO NUMBERS THAT YANKY CAN USE?

+ + + + + = 100

MIND STE

Can you help Yanky figure out the code before his little escapade becomes far more dangerous?

See answers on page 95.

Blond Benson

the Room



...S OF CLUES 2 AND 3.
THE TWO-DIGIT ANSWER IS THE
CENTER INTO THE NUMBER LOCK

CLUE 5
THE LAST DIGIT OF THE LOCK
CODE IS HIDDEN BETWEEN
SOME LETTERS.
CAN YOU FIND IT?

DO NOT FEED!

CLUE 2
ADD THE FIRST AND LAST DIGITS OF EACH
CODE. YOU WILL GET THE SAME TOTAL,
EXCEPT FOR ONE CODE. WHICH CODE IS THE
ODD ONE OUT? ----

2367	8941
6093	7532
0879	3206
6935	9310
5684	4765

CLUE 3
USE THE SIGN TO PLOT THE POINTS
SHOWN BELOW. DRAW FROM ONE
POINT TO ANOTHER TO REVEAL A
NUMBER.

1. N ⇔ S = _____
2. S ⇔ N ⇔ W ⇔ E = _____