



# The Green

## Glusburn | 1 bedroom stone brick houses

We are delighted to introduce to you our collection of one bedroom stone brick homes, in the desirable location of Glusburn. If you're looking for home in a beautiful, rural environment, The Green could offer the perfect home for you.

Our homes are in close proximity to good schools, including Glusburn Community Primary School, and

Sutton in Craven C of E Primary School.

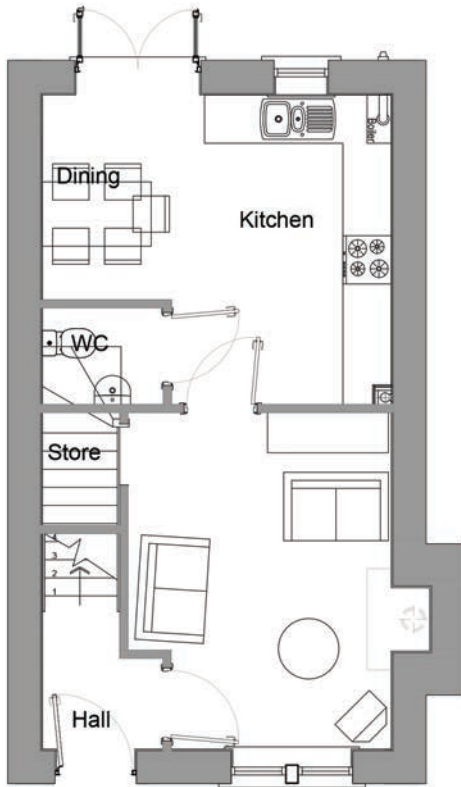
Local amenities are less than a mile away, including a Co-op, GP surgery and a petrol station.

Getting out and about couldn't be easier, with Steeton and Silsden train station just 3.1 miles away.

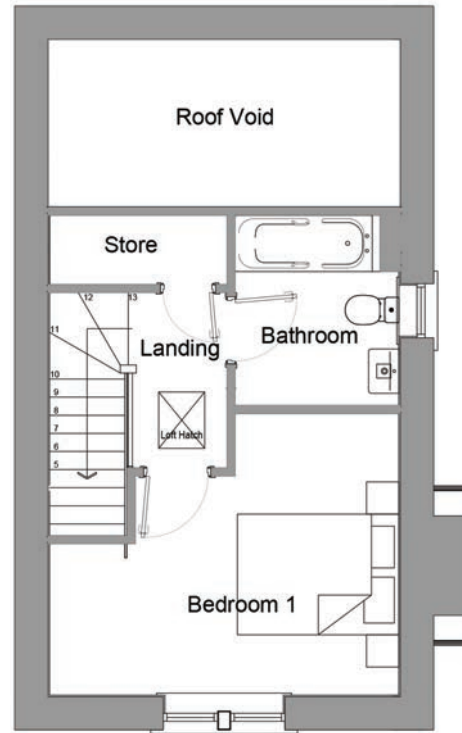


# The Green

Glusburn | 1 bedroom stone brick house



Ground floor



First floor

## Measurements

### Ground floor

Living room	3.25m x 4.16m
Dining area	1.14m x 1.44m
Kitchen	2.94m x 3.78m

### First floor

Bedroom 1	4.29m x 2.66m
Bathroom	1.98m x 2.18m

**Total floor space: 60.94m<sup>2</sup>**

Any floor plans are a general outline of the layout of the property for guidance only. All measurements are approximate and may vary and any intending purchasers should not rely on them as statements of fact or representations of fact but must satisfy themselves by inspection or otherwise as to their accuracy. Dimensions shown are not intended to be relied upon for installation of appliances or items of furniture or otherwise.

## Get in touch

0800 073 0600

[buyahome@homegroup.org.uk](mailto:buyahome@homegroup.org.uk)

[www.homegroup.org.uk](http://www.homegroup.org.uk)





# The Green

Glusburn | 1 bedroom stone brick house



## Specification includes

- Beautiful stone brick exterior
- Integrated electric oven
- Ceramic hob
- Extractor hood
- White gloss kitchen cupboards
- Black worktops
- Stainless steel splashback
- Enclosed turfed rear garden
- Off street parking
- Additional storage space



Any floor plans are a general outline of the layout of the property for guidance only. All measurements are approximate and may vary and any intending purchasers should not rely on them as statements of fact or representations of fact but must satisfy themselves by inspection or otherwise as to their accuracy. Dimensions shown are not intended to be relied upon for installation of appliances or items of furniture or otherwise.

## Get in touch

0800 073 0600

[buyahome@homegroup.org.uk](mailto:buyahome@homegroup.org.uk)

[www.homegroup.org.uk](http://www.homegroup.org.uk)

