

Augusta Drive | Dinnington

For further information or
to arrange a viewing,
please call 0800 073 0600



The Chestnut

Semi-detached 3 bedroom homes

Our collection of three bedroom semi-detached homes are in the vibrant village of Dinnington offering stunning views of the surrounding countryside. Our homes are in a lovely position in a quiet cul-de-sac.

Ideally located, our homes are just a 10-minute drive away from Kingston Park retail parks, perfect all your shopping needs, as well as Ponteland Village, a fantastic and popular hotspot for restaurants and

bars. If you have children, there are a number of well-regarded schools nearby including Dinnington First School.

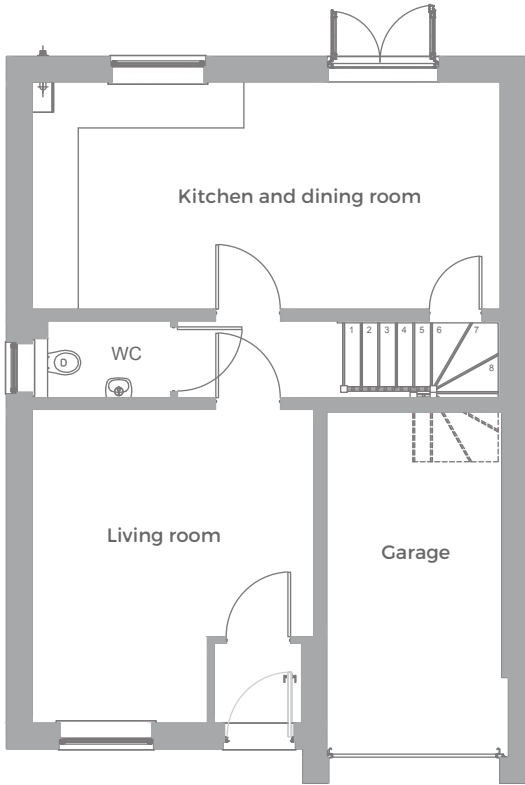
The Chestnut is a semi-detached family home with the benefit of an integral garage and two off-street parking bays. Surrounding the homes are vast green fields and countryside, offering beautiful views to enjoy.



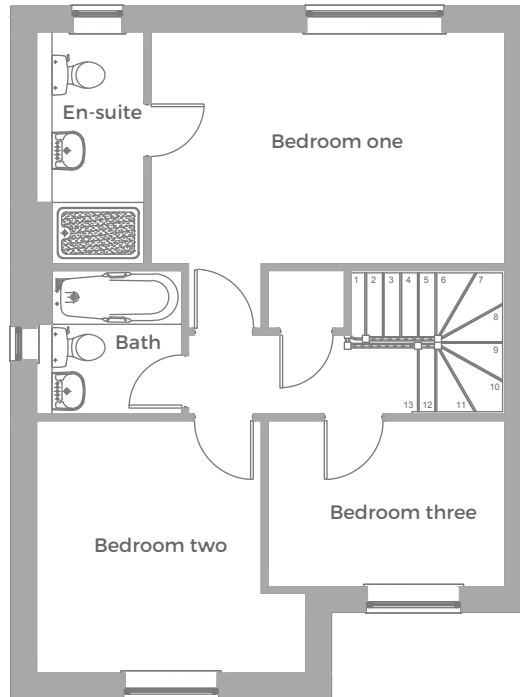


The Chestnut

Semi-detached 3 bedroom homes



Ground floor



First floor

Measurements

Ground floor

Kitchen and dining room 6.08m x 2.90m
Living room 4.08m x 3.66m

First floor

Bedroom 1 4.0m x 2.98m
Bedroom 2 4.0m x 2.90m
Bedroom 3 2.90m x 2.89m

Specification includes

- Zanussi gas hob, electric oven and extractor
- Integrated Zanussi dishwasher
- Integrated Zanussi fridge-freezer
- Integrated Zanussi washing machine
- Fencing and turf to the rear garden
- Beautiful bathroom, en-suite and cloakroom tiling
- Off-street parking
- An integral garage

Any floor plans are a general outline of the layout of the property for guidance only. All measurements are approximate and may vary and any intending purchasers should not rely on them as statements of fact or representations of fact but must satisfy themselves by inspection or otherwise as to their accuracy. Dimensions shown are not intended to be relied upon for installation of appliances or items of furniture or otherwise.

Get in touch

0800 073 0600

BuyAHome@homegroup.org.uk

www.homegroup.org.uk

