



# Stannington Mews

## 2 and 3 bedroom homes

Our two and three bedroom homes at Stannington Mews are in a quiet, rural location, surrounded by beautiful woodlands and just a five minute drive from the A1.

Our homes are on a fantastic development in the heart of the Northumberland countryside. As you arrive at the development, you will instantly enjoy the

woodland setting with vast trees, wide open green spaces, courtyards and beautiful views. Some of these views you can enjoy from our homes too!

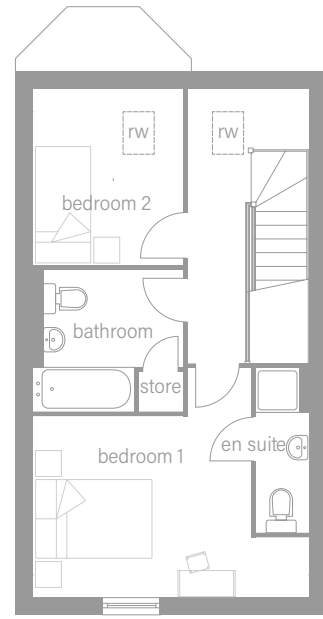
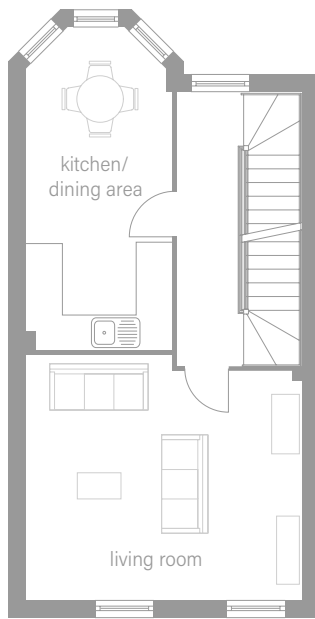
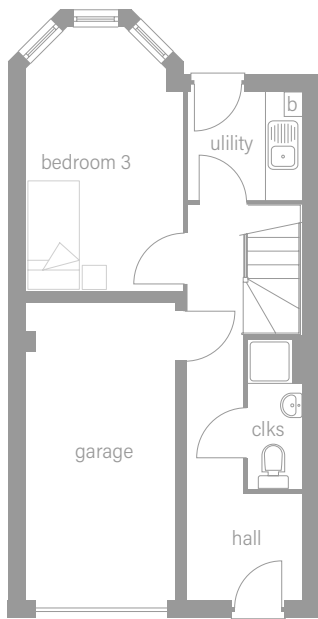
Each home has a high specification throughout, with integrated kitchen appliances, versatile living spaces, an en suite to the master bedroom, allocated off street parking and a garage.





# Stannington Mews

The Cavell | 3 bedroom townhouse with a garage



## Measurements

### Ground floor

Bedroom 3	4.50m x 2.66m
Utility	1.93m x 1.83m
Cloakroom	2.55m x 0.90m

### First floor

Kitchen/ dining area	5.51m x 2.46m
Living room	4.69m x 4.18m

### Second floor

Bedroom 1	4.69m x 3.90m
En suite	2.81m x 0.90m
Bedroom 2	3.00m x 2.53m
Bathroom	2.53m x 2.41m

Any floor plans are a general outline of the layout of the property for guidance only. All measurements are approximate and may vary and any intending purchasers should not rely on them as statements of fact or representations of fact but must satisfy themselves by inspection or otherwise as to their accuracy. Dimensions shown are not intended to be relied upon for installation of appliances or items of furniture or otherwise.

## Get in touch

0800 073 0600

[buyahome@homegroup.org.uk](mailto:buyahome@homegroup.org.uk)

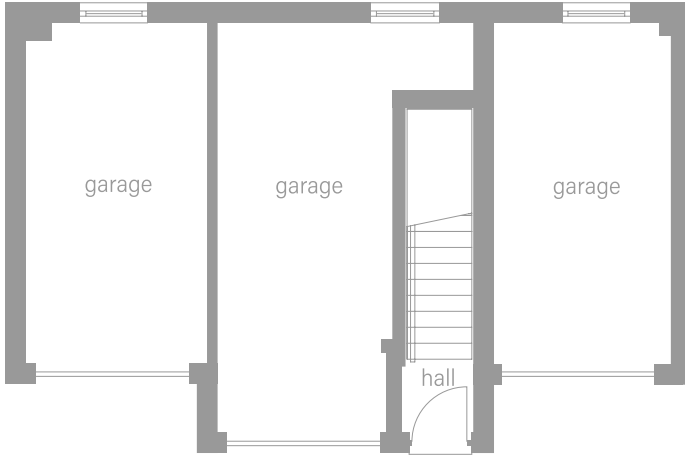
[www.homegroup.org.uk](http://www.homegroup.org.uk)





# Stannington Mews

The Reimann | 2 bedroom maisonette with a garage



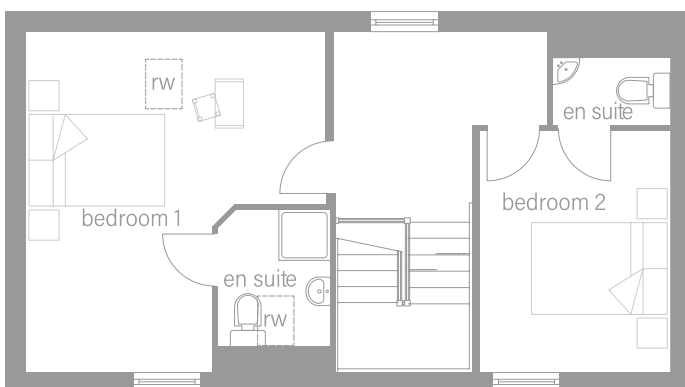
**Ground floor**



**Measurements**

**First floor**

Kitchen/living area	4.96m x 4.43m
Dining room	3.52m x 2.75m
Bathroom	2.39m x 1.70m



**Second floor**

Bedroom 1	4.96m x 4.41m
En suite	2.00m x 1.60m
Bedroom 2	3.52m x 2.75m
Cloakroom	1.69m x 0.98m

Any floor plans are a general outline of the layout of the property for guidance only. All measurements are approximate and may vary and any intending purchasers should not rely on them as statements of fact or representations of fact but must satisfy themselves by inspection or otherwise as to their accuracy. Dimensions shown are not intended to be relied upon for installation of appliances or items of furniture or otherwise.

## Get in touch

0800 073 0600

[buyahome@homegroup.org.uk](mailto:buyahome@homegroup.org.uk)

[www.homegroup.org.uk](http://www.homegroup.org.uk)







# Stannington Mews

2 and 3 bedroom homes



## Specification includes

- Avola kitchen units in Bari White, Bari Grey Green and Bari Grey Bardolino Oak
- Kitchen worktops in natural, light oak and a dark grey
- Zanussi single fan oven
- Zanussi gas hob
- Stainless steel chimney extractor hood
- 70/30 fridge freezer
- 1.5 bowl kitchen sink
- Bathroom and en suite tiles in cream, a light grey and a marble effect light grey
- Roca white sanitaryware
- Garage
- Off street parking

Any floor plans are a general outline of the layout of the property for guidance only. All measurements are approximate and may vary and any intending purchasers should not rely on them as statements of fact or representations of fact but must satisfy themselves by inspection or otherwise as to their accuracy. Dimensions shown are not intended to be relied upon for installation of appliances or items of furniture or otherwise.

**Get in touch**

**0800 073 0600**

**buyahome@homegroup.org.uk**

**www.homegroup.org.uk**

