

Essendene Rise | North Seaton

For further information or
to arrange a viewing,
please call 0800 073 0600



Essendene Rise

2 and 3 bedroom homes

Our two and three bedroom homes at Essendene Rise are in a desirable location within easy reach of local amenities and a short drive from the coast.

The Ash, our two bedroom home, is perfect for a couple looking for their first home. The Cherry is a

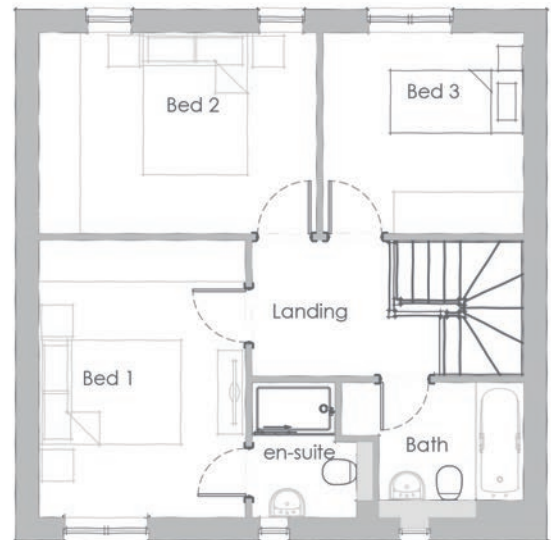
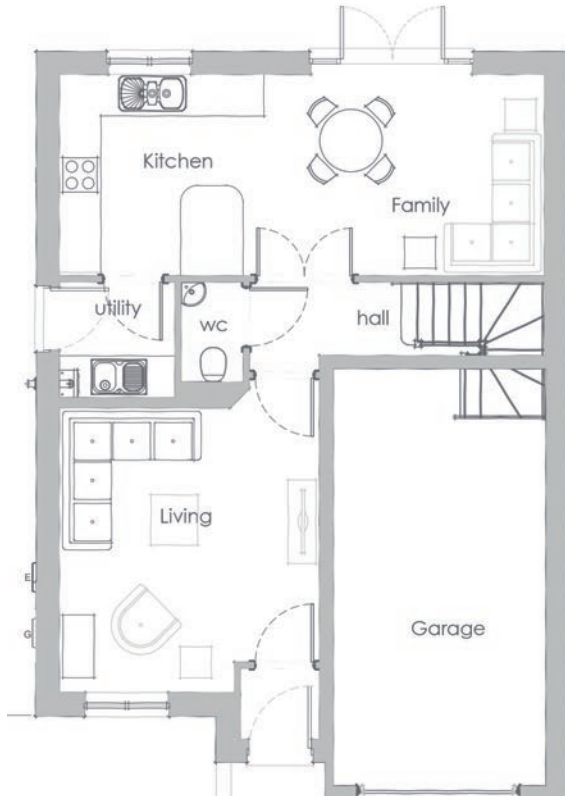
great home for a family, offering good-sized rooms and living spaces. These homes are available as semi-detached and terraced and all benefit from a good specification, integrated appliances and off street parking.





Essendene Rise

The Peony | 3 bedroom house



Measurements

Ground floor

Kitchen	2.95m x 2.90m
Dining area	4.04m x 2.90m
Living room	4.10m x 3.74m

First floor

Bedroom 1	4.0m x 2.98m
Bedroom 2	4.0m x 2.90m
Bedroom 3	2.90m x 2.89m

Any floor plans are a general outline of the layout of the property for guidance only. All measurements are approximate and may vary and any intending purchasers should not rely on them as statements of fact or representations of fact but must satisfy themselves by inspection or otherwise as to their accuracy. Dimensions shown are not intended to be relied upon for installation of appliances or items of furniture or otherwise.

Get in touch

0800 073 0600

buyahome@homegroup.org.uk

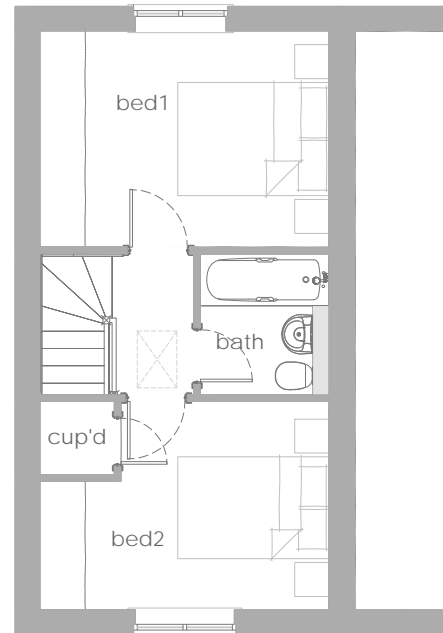
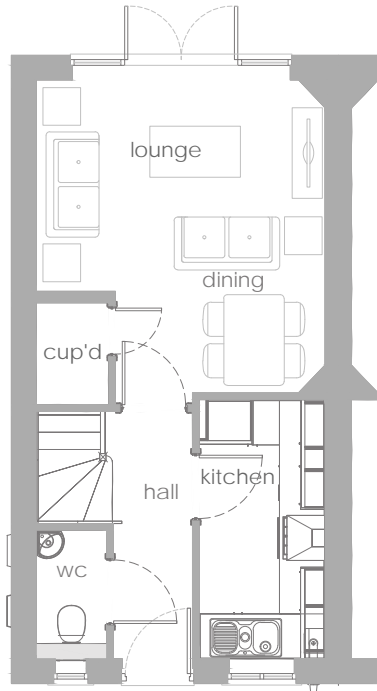
www.homegroup.org.uk





Essendene Rise

The Ash | 2 bedroom house



Measurements

Ground floor

Living room 4.14m x 3.82m
Kitchen 3.43m x 1.66m

First floor

Bedroom 1 3.82m x 2.86m
Bedroom 2 3.82m x 2.76m

Any floor plans are a general outline of the layout of the property for guidance only. All measurements are approximate and may vary and any intending purchasers should not rely on them as statements of fact or representations of fact but must satisfy themselves by inspection or otherwise as to their accuracy. Dimensions shown are not intended to be relied upon for installation of appliances or items of furniture or otherwise.

Get in touch

0800 073 0600

buyahome@homegroup.org.uk

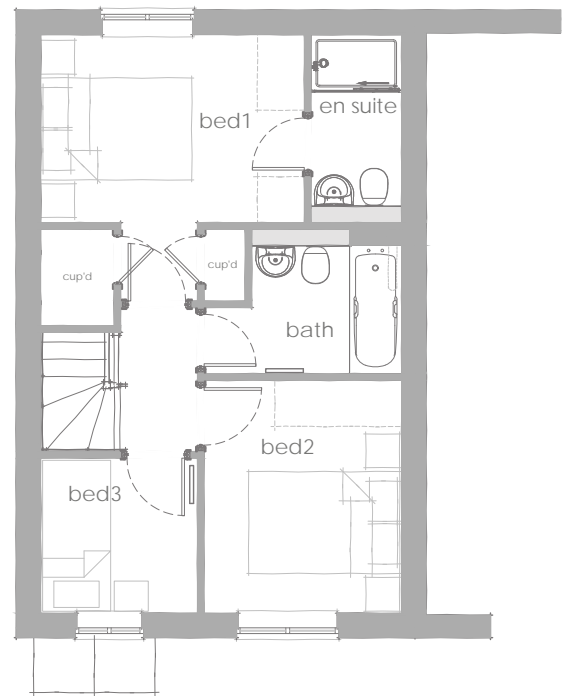
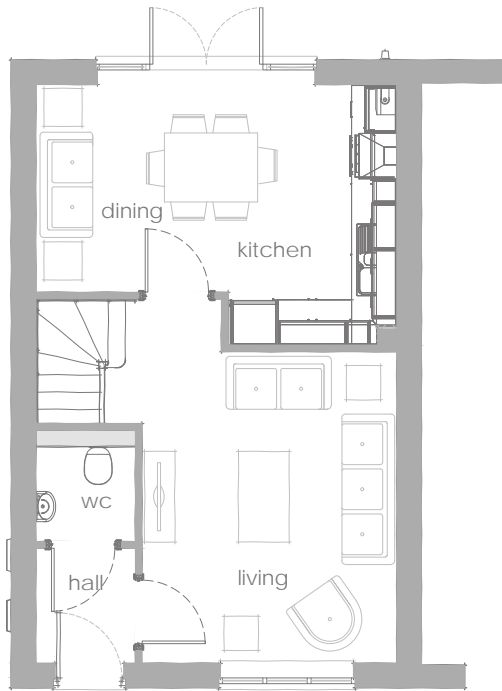
www.homegroup.org.uk





Essendene Rise

The Cherry | 3 bedroom house



Measurements

Ground floor

Kitchen	3.45m x 2.23m
Dining area	2.75m x 2.54m
Living room	4.12m x 3.37m

First floor

Bedroom 1	3.49m x 2.49m
Bedroom 2	3.08m x 2.61m
Bedroom 3	2.07m x 2.05m

Any floor plans are a general outline of the layout of the property for guidance only. All measurements are approximate and may vary and any intending purchasers should not rely on them as statements of fact or representations of fact but must satisfy themselves by inspection or otherwise as to their accuracy. Dimensions shown are not intended to be relied upon for installation of appliances or items of furniture or otherwise.

Get in touch

0800 073 0600

buyahome@homegroup.org.uk

www.homegroup.org.uk





Essendene Rise

2 and 3 bedroom homes



Specification includes

- Zanussi gas hob, electric oven and extractor
- Integrated dishwasher (The Cherry only)
- Integrated fridge-freezer
- Integrated washing machine (The Cherry only)
- A shed and fencing to the rear garden
- Beautiful bathroom, en-suite and cloakroom tiling
- Parking bays

Any floor plans are a general outline of the layout of the property for guidance only. All measurements are approximate and may vary and any intending purchasers should not rely on them as statements of fact or representations of fact but must satisfy themselves by inspection or otherwise as to their accuracy. Dimensions shown are not intended to be relied upon for installation of appliances or items of furniture or otherwise.

Get in touch

0800 073 0600

buyahome@homegroup.org.uk

www.homegroup.org.uk

