



# Roecliffe Drive

Our collection of two and three bedroom terraced and semi-detached homes are in the rural village of Minskip, a mile south west of Boroughbridge.

Our homes are surrounded by beautiful communal green spaces, trees and hedgerow as well as nature right on your doorstep. The little village of Minskip is close to Boroughbridge, home to three good schools, a Morrisons supermarket and garage and plenty of

pubs and restaurants to enjoy. There's even a local farm shop just up the road!

Our homes are available through shared ownership, a more affordable way to get on the property ladder.

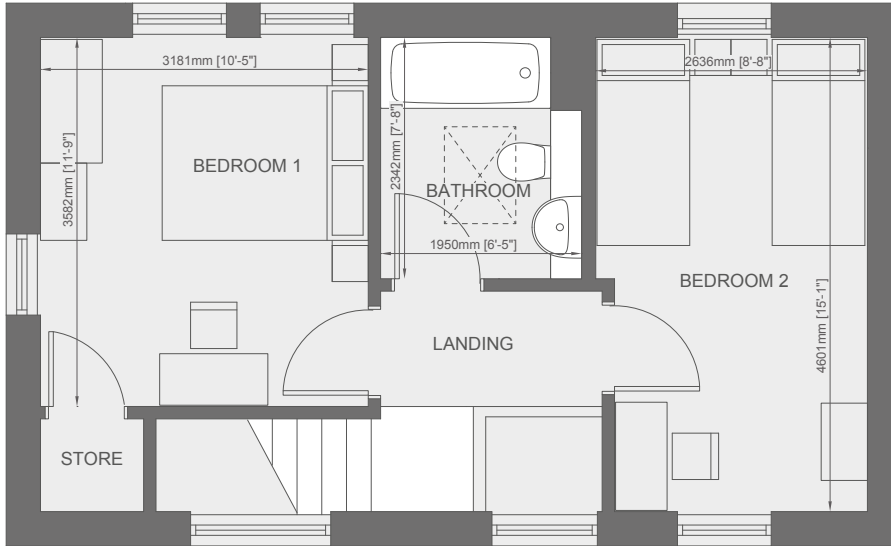
The Vermont is a mid or end terrace two bedroom home, The Linden and the Salisbury are our semi-detached three bedroom homes.



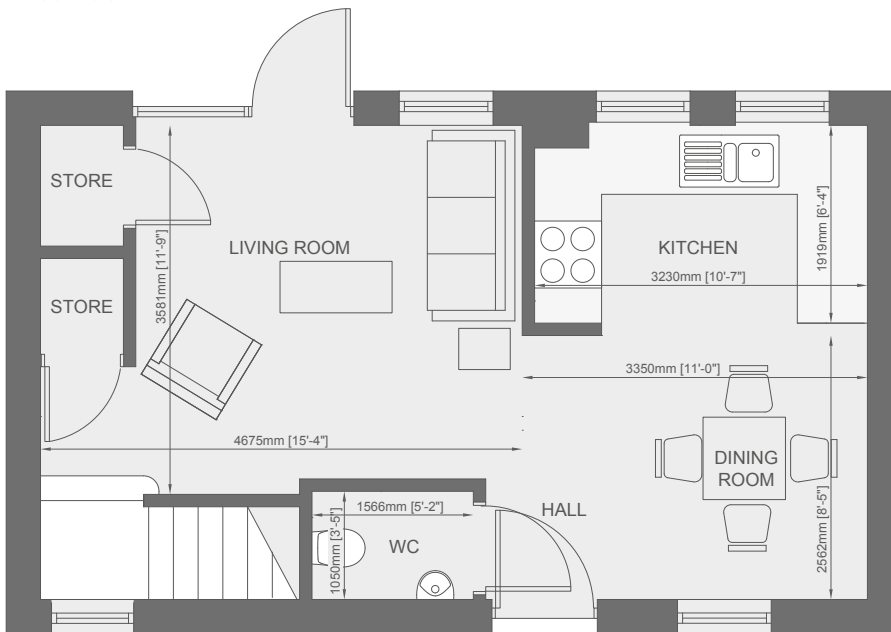


# Roecliffe Drive

The Vermont | 2 bedroom home



First floor



Ground floor

## Measurements

### Ground floor

Kitchen	3.23m x 1.91m
Dining room	3.35m x 2.56m
Living room	4.67m x 3.58m

### First floor

Bedroom 1	3.18m x 3.58m
Bedroom 2	2.63m x 4.60m
Bathroom	1.95m x 2.34m

Any floor plans are a general outline of the layout of the property for guidance only. All measurements are approximate and may vary and any intending purchasers should not rely on them as statements of fact or representations of fact but must satisfy themselves by inspection or otherwise as to their accuracy. Dimensions shown are not intended to be relied upon for installation of appliances or items of furniture or otherwise.

## Get in touch

0800 073 0600

buyahome@homegroup.org.uk

www.homegroup.org.uk

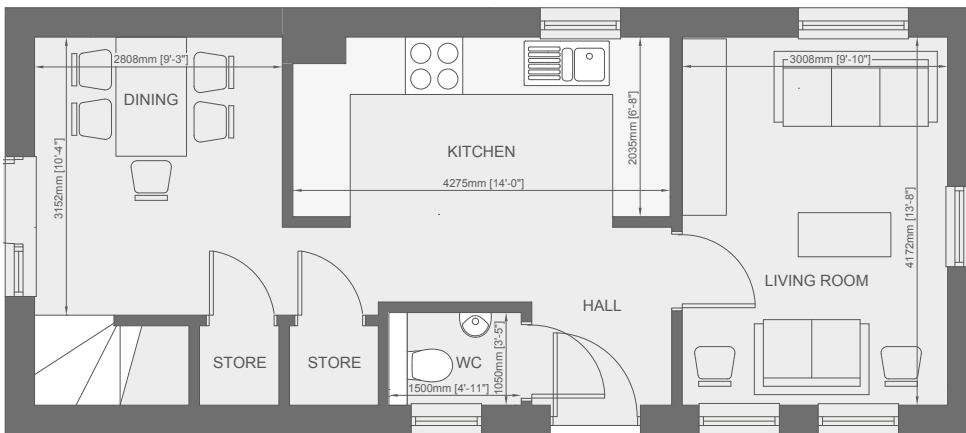


# Roecliffe Drive

The Salisbury | 3 bedroom home



First floor



Ground floor

## Measurements

### Ground floor

Kitchen	4.27m x 2.03m
Dining room	2.80m x 3.15m
Living room	3.00m x 4.17m

### First floor

Bedroom 1	3.34m x 4.17m
Bedroom 2	3.10m x 3.15m
Bedroom 3	2.10m x 2.98m
Bathroom	2.10m x 2.01m

Any floor plans are a general outline of the layout of the property for guidance only. All measurements are approximate and may vary and any intending purchasers should not rely on them as statements of fact or representations of fact but must satisfy themselves by inspection or otherwise as to their accuracy. Dimensions shown are not intended to be relied upon for installation of appliances or items of furniture or otherwise.

## Get in touch

0800 073 0600

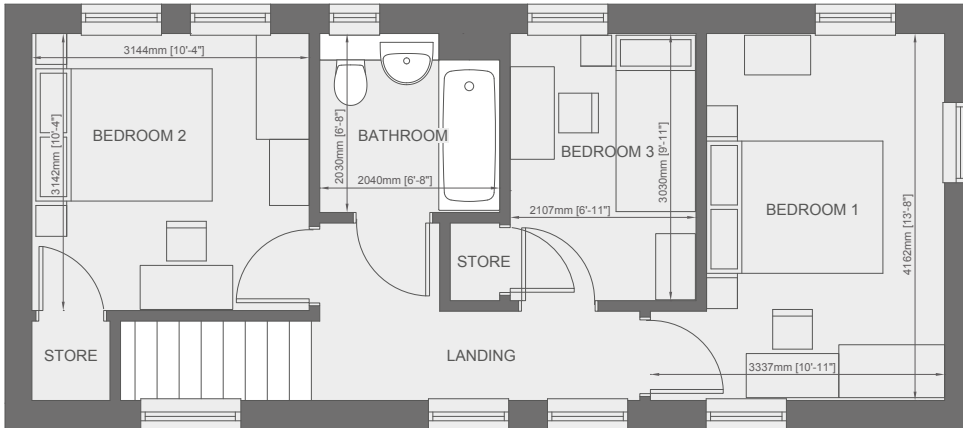
[buyahome@homegroup.org.uk](mailto:buyahome@homegroup.org.uk)

[www.homegroup.org.uk](http://www.homegroup.org.uk)

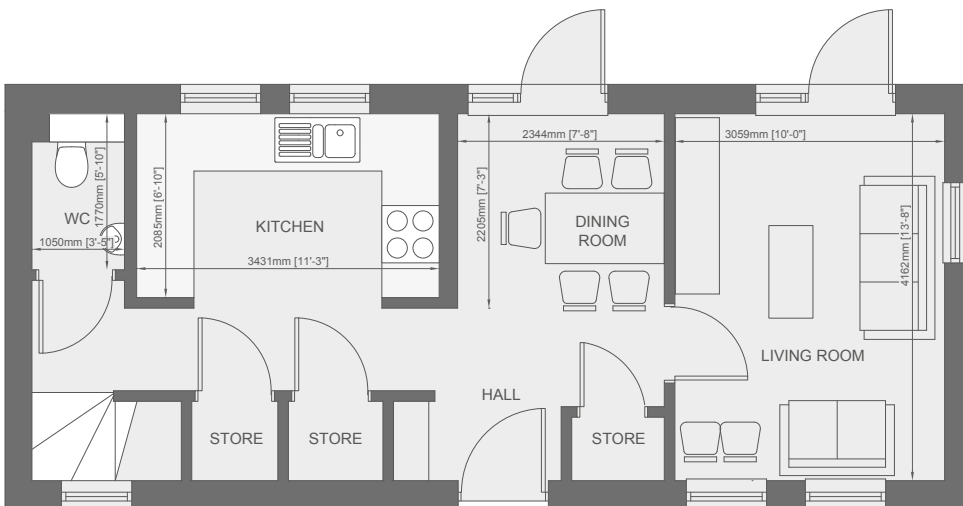


# Roecliffe Drive

The Linden | 3 bedroom home



First floor



Ground floor

## Measurements

### Ground floor

Kitchen	3.43m x 2.08m
Dining room	2.34m x 2.20m
Living room	3.05m x 4.16m

### First floor

Bedroom 1	3.33m x 4.18m
Bedroom 2	3.14m x 3.14m
Bedroom 3	2.10m x 3.03m
Bathroom	2.04m x 2.03m

## Specification includes

- Electric oven
- Induction hob
- Extractor hood
- Rixonway kitchen cupboards and worktops
- Allocated parking
- Good sized turfed and fenced rear garden

\*Specifications and gardens may vary from plot to plot.

Any floor plans are a general outline of the layout of the property for guidance only. All measurements are approximate and may vary and any intending purchasers should not rely on them as statements of fact or representations of fact but must satisfy themselves by inspection or otherwise as to their accuracy. Dimensions shown are not intended to be relied upon for installation of appliances or items of furniture or otherwise.

## Get in touch

0800 073 0600

[buyahome@homegroup.org.uk](mailto:buyahome@homegroup.org.uk)

[www.homegroup.org.uk](http://www.homegroup.org.uk)

