



The Elder

Semi-detached 3 bedroom homes

Conveniently located on the edge of Birtley and close to the famous Angel of the North, The Aspens is a collection of semi-detached three-bedroom homes, with 8 available now through shared ownership.

Perfect for first time buyers and families, our stylish new homes offer plenty of room for relaxing and entertaining, fitted kitchens with integrated

appliances, and pleasant gardens. There's a great range of local amenities right on the doorstep and you're in a great location for commuting too.

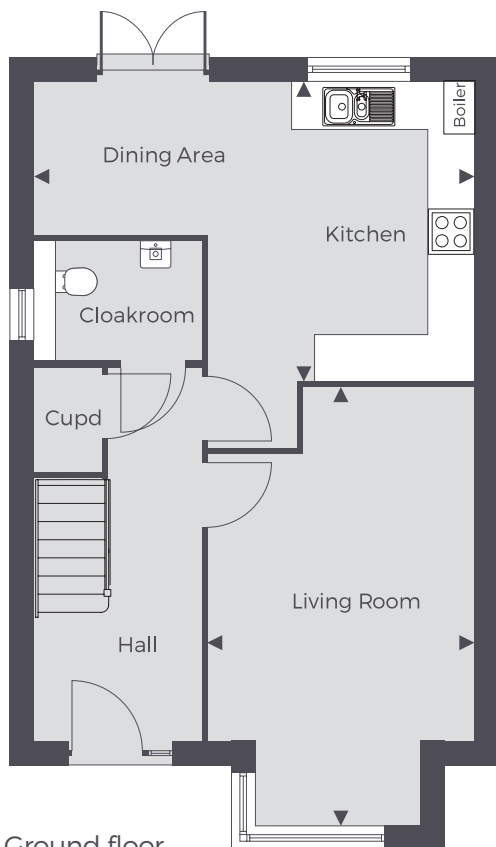
Our homes are available through shared ownership, a more affordable way to get on the property ladder. Take a look at our helpful shared ownership guide to discover how shared ownership could work for you.



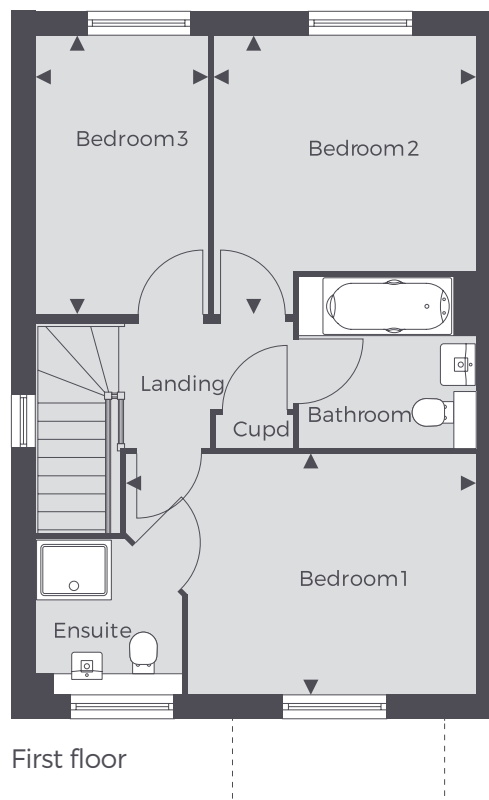


The Aspens

The Elder | 3 bedroom home



Ground floor



First floor

Measurements

Ground floor

Kitchen/dining area 5.79m x 3.91m
Living room 5.79m x 3.50m

First floor

Bedroom 1 4.59m x 3.16m
Bedroom 2 3.64m x 3.43m
Bedroom 3 3.64m x 2.26m

Specification includes

- Stylish Symphony kitchen
- Stainless steel 1.5 bowl sink
- Double integrated Electrolux oven
- Gas hob
- Stainless steel extractor hood and splashback
- Integrated dishwasher
- Integrated fridge-freezer
- Ideal Standard white sanitaryware
- Off-street parking

*Specifications and gardens vary from plot to plot.

Any floor plans are a general outline of the layout of the property for guidance only. All measurements are approximate and may vary and any intending purchasers should not rely on them as statements of fact or representations of fact but must satisfy themselves by inspection or otherwise as to their accuracy. Dimensions shown are not intended to be relied upon for installation of appliances or items of furniture or otherwise.

