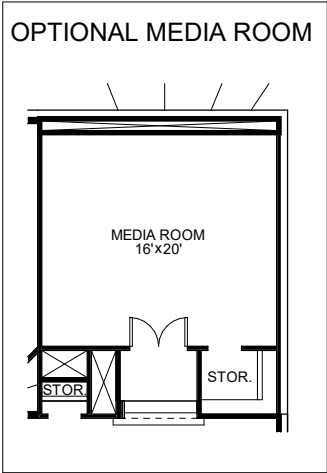
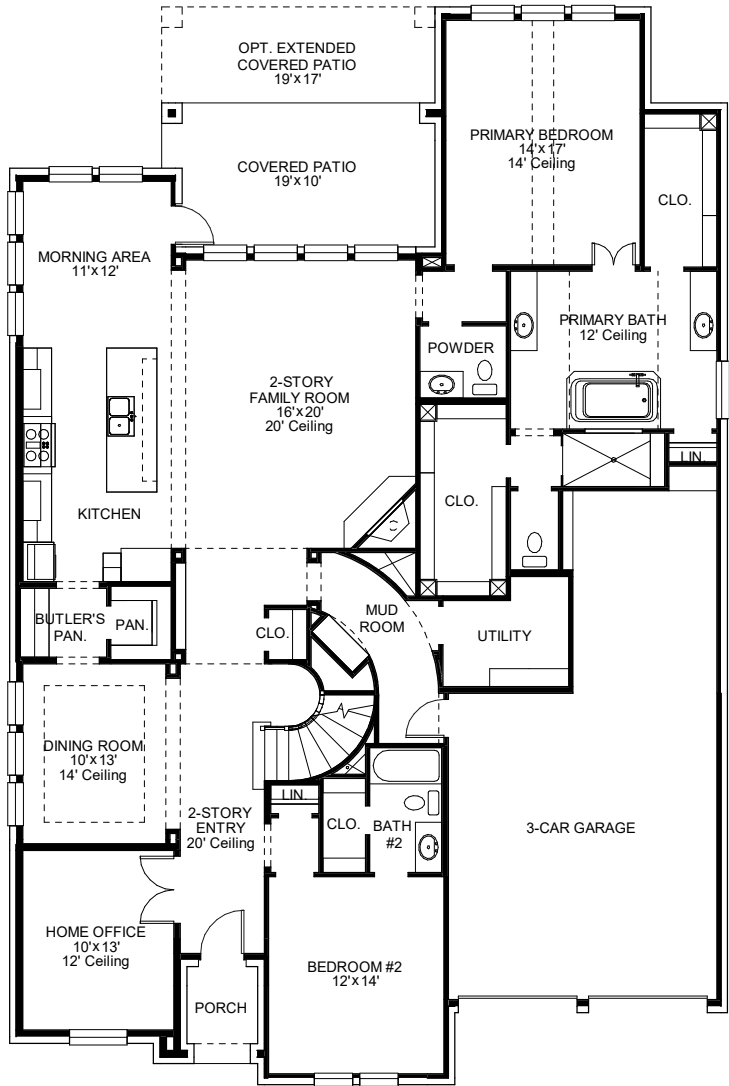


BRITTON HOMES

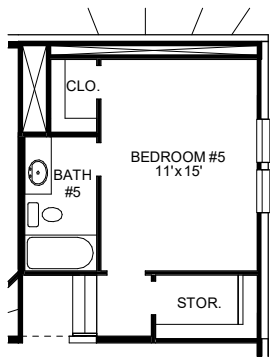
DESIGN 553A

This home contains approximately 3,489 square feet.*

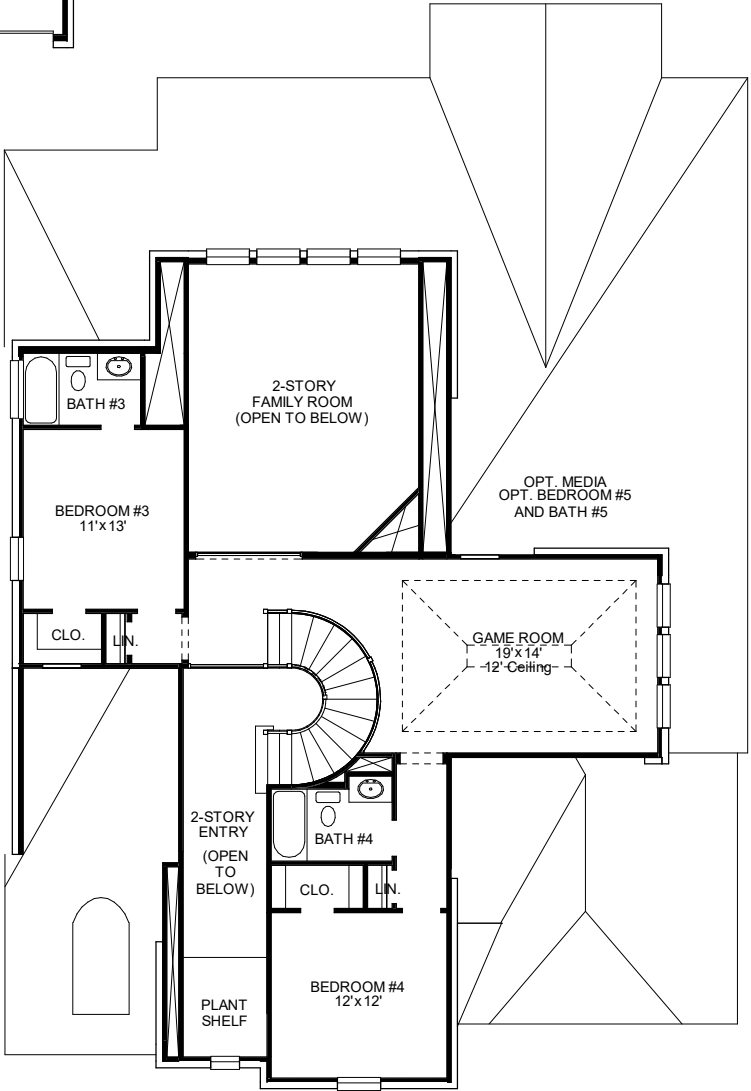


This option adds approximately 319 square feet.

OPTIONAL BEDROOM #5 & BATH #5



This option adds approximately 323 square feet.



*See Elevation Page(s) for Details and Disclaimers. © Perry Homes, LLC 2025



BRITTON

HOMES



DESIGN 553A E-1



DESIGN 553A E-30



DESIGN 553A E-72

*See Elevation Page(s) for Details and Disclaimers. © Perry Homes, LLC 2025



BRITTON

HOMES



DESIGN 553A E-90



DESIGN 553A E-91



DESIGN 553A E-92

*See Elevation Page(s) for Details and Disclaimers. © Perry Homes, LLC 2025





DESIGN 553A E-93



This design, as originally designed and prior to any changes you make, is estimated to yield approximately the number of square feet shown on page 1. All dimensions are approximate. Square footage may vary based on as-built dimensions, configurations, plan options and/or the method of calculation. Designs are not-to-scale, and are conceptual illustrations that may differ from construction plans or completed improvements. A design may depict features not available on all homesites or in all communities. Britton Homes reserves the right to make changes in plans and specifications, and to substitute material of similar quality. Prices, terms, promotions, plans, dimensions, features, options, amenities, elevations, designs, square footages, specifications, materials, and availability of homes or communities are subject to change without notice or obligation. All obligations will be governed by a written contract. This design does not constitute a commitment to build a particular floor plan or home in any given community. Some floor plans, options, and/or elevations may not be available on certain homesites or in a particular community and may require additional charges. Please check with Britton Homes to verify current offerings in the communities you are considering. This rendering is the property of Perry Homes, LLC. Any reproduction or exhibition is strictly prohibited. © Perry Homes, LLC 2025