

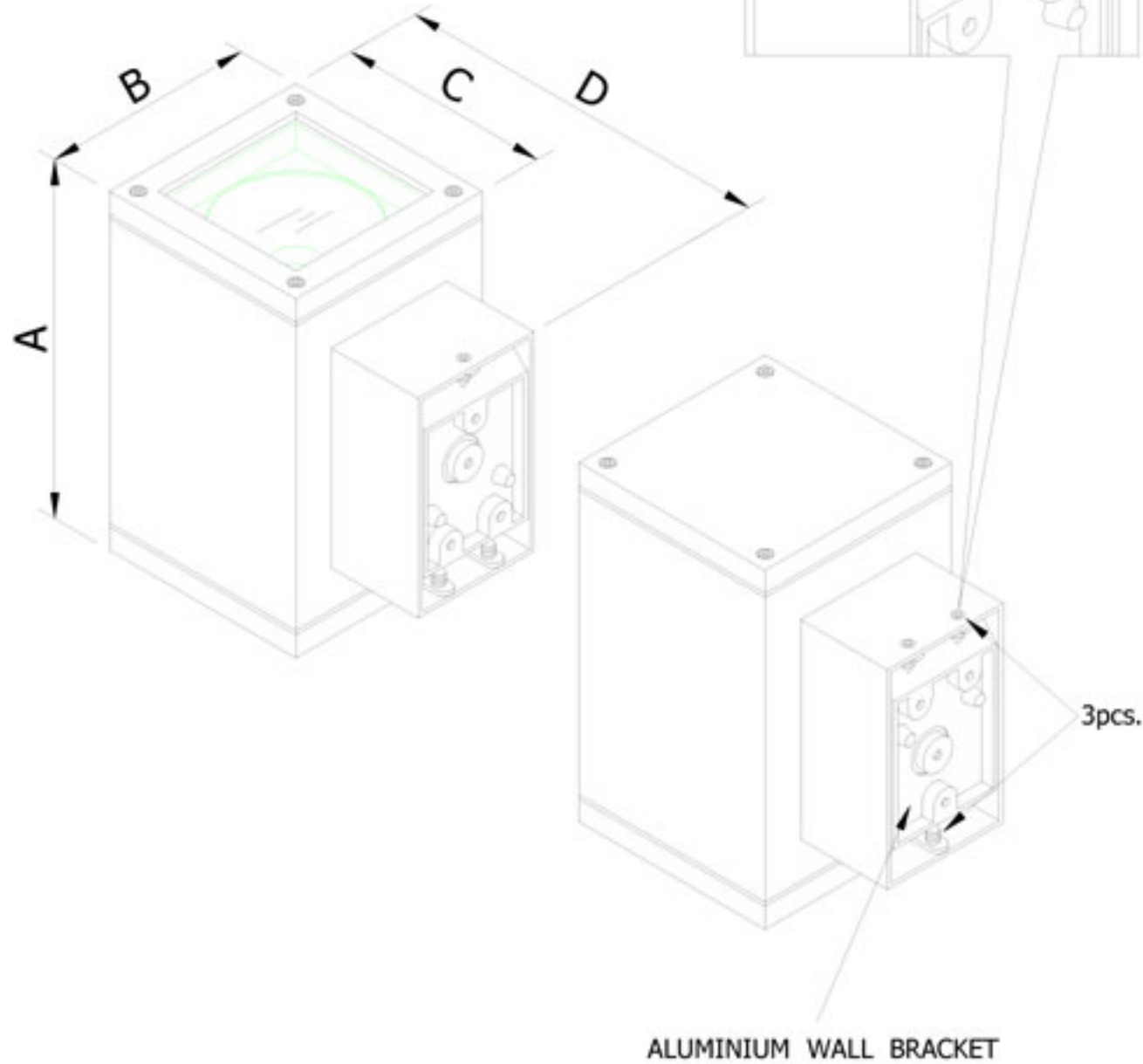
INSTRUCTION MANUAL FOR DL 3121



1

DIMENSION

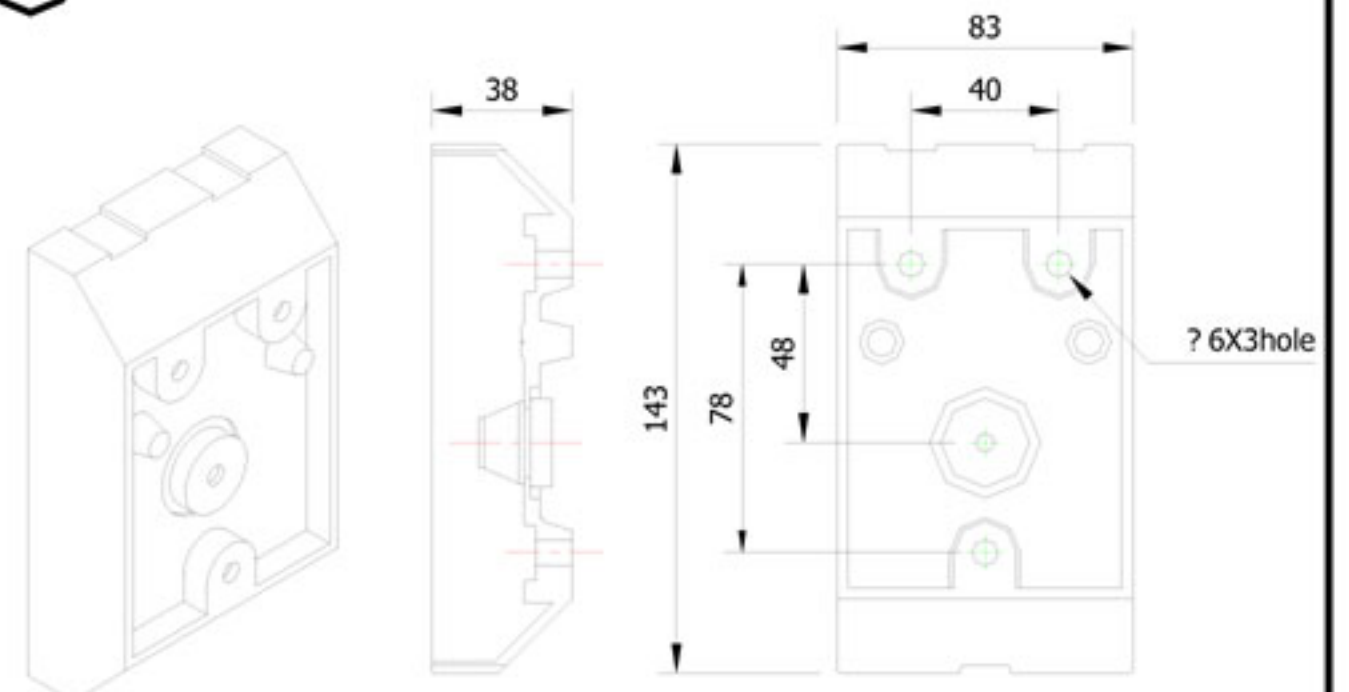
	A	B	C	D
DL 3121	250	150	150	220



ALUMINIUM WALL BRACKET

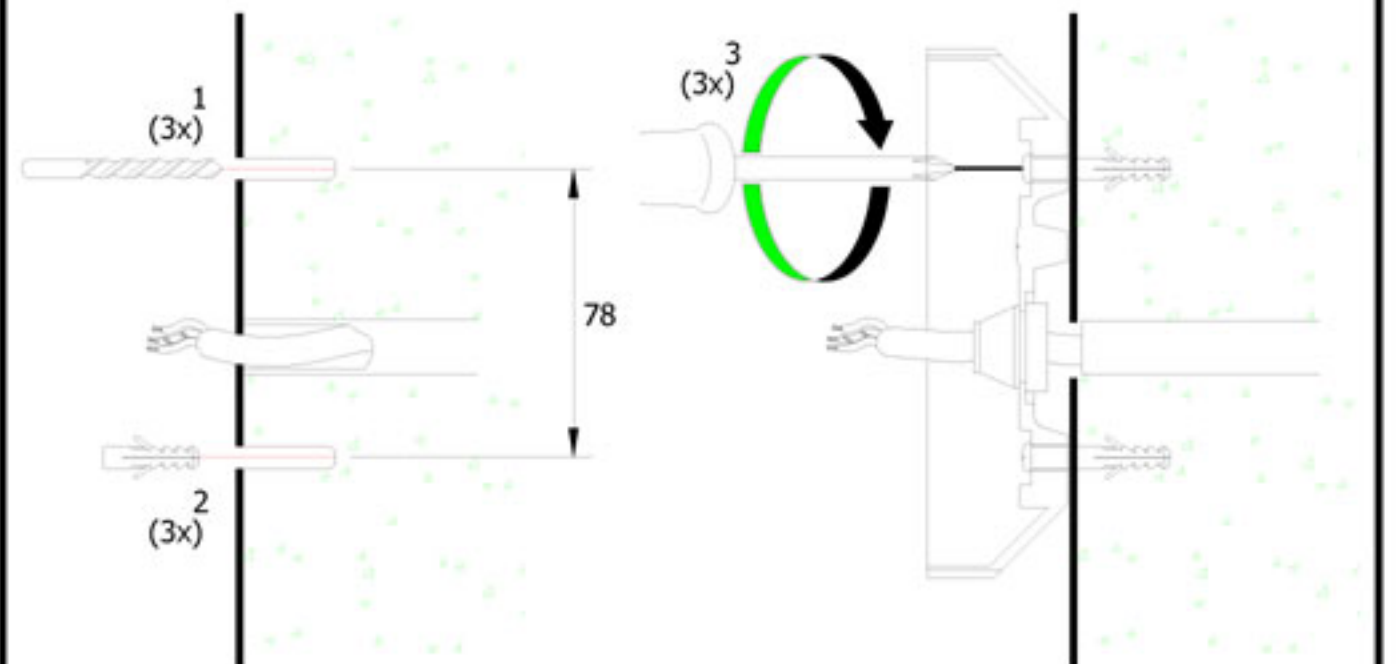
2

ALUMINIUM WALL BRACKET

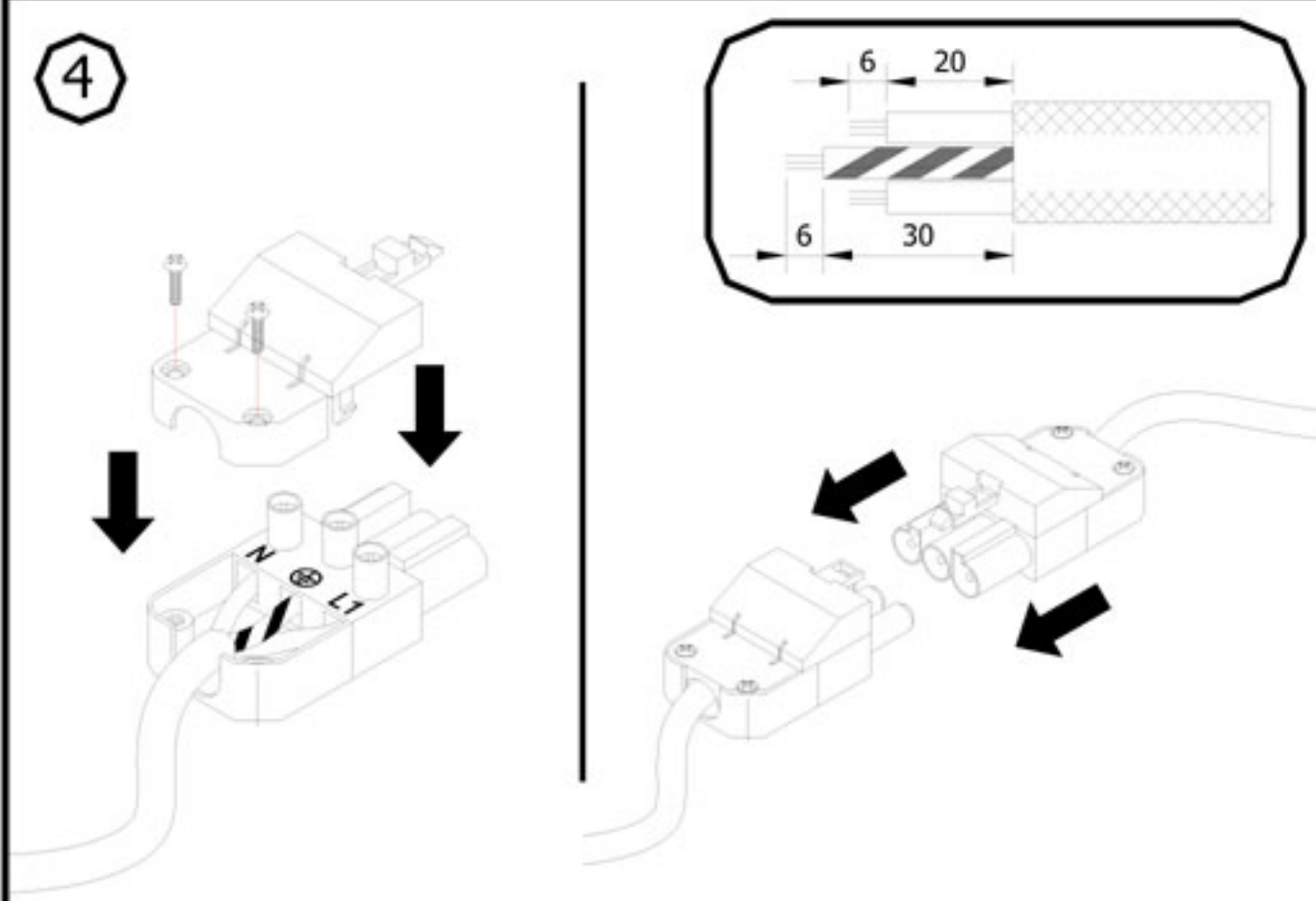


All Dimension are in millimeter

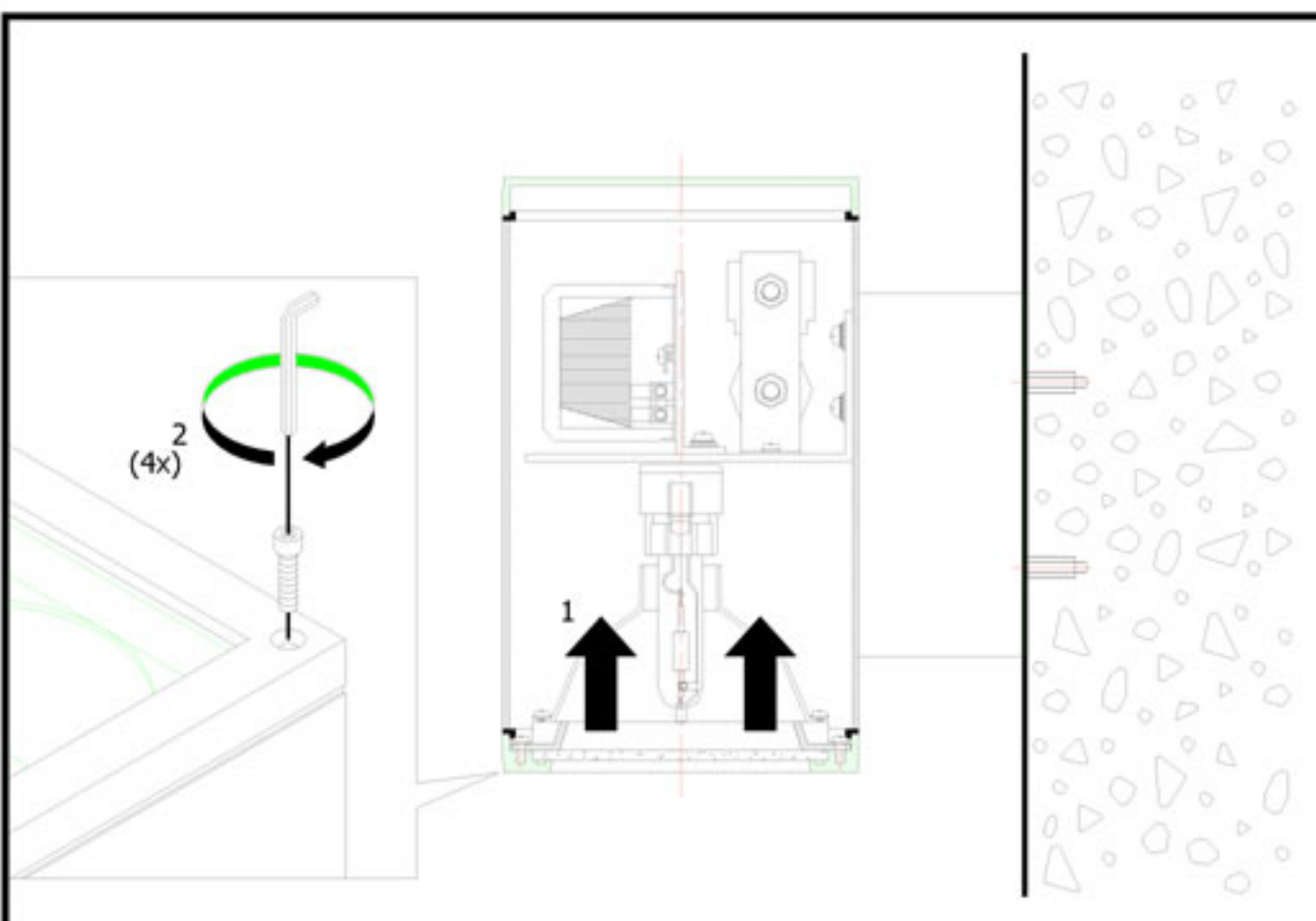
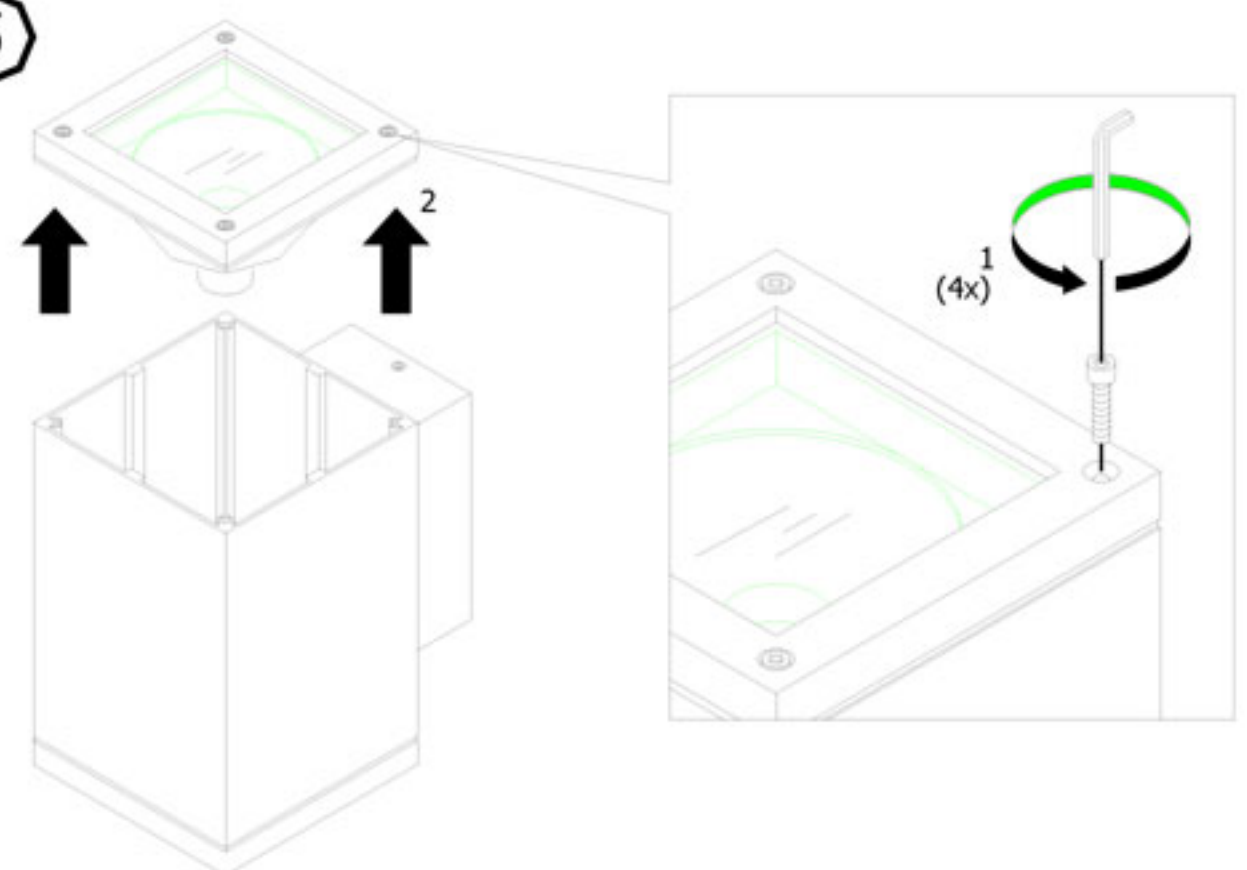
3



4



5



REMARK :

- 1 INSTALLATION SHOULD BE CARRIED OUT BY A QUALIFIED ELECTRICIAN IN ACCORDANCE WITH APPROPRIATE NATIONAL WIRING REGULATION.
- 2 DISCONNECT THE POWER BEFORE CHANGING THE LAMP.
- 3 THIS IS CLASS 1 LIGHTING FIXTURE AND MUST BE EARTHED.
- 4 DO NOT EXCEED THE MAXIMUM WATTAGE.

ilmas