

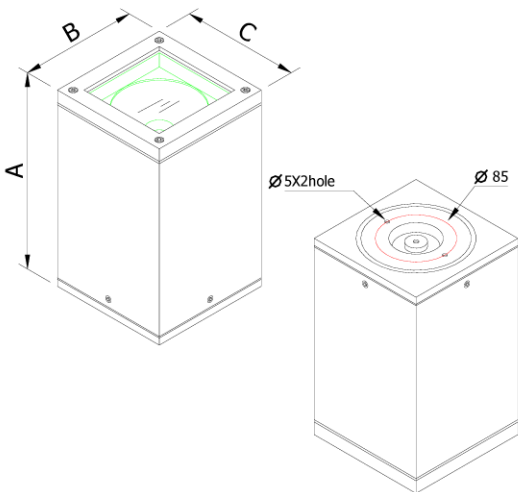
INSTRUCTION MANUAL FOR DL-3220



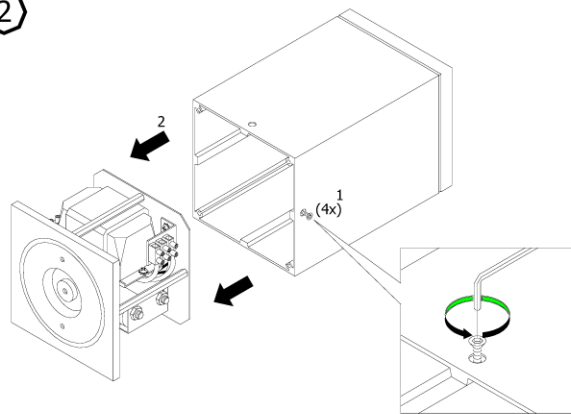
1

DIMENSION

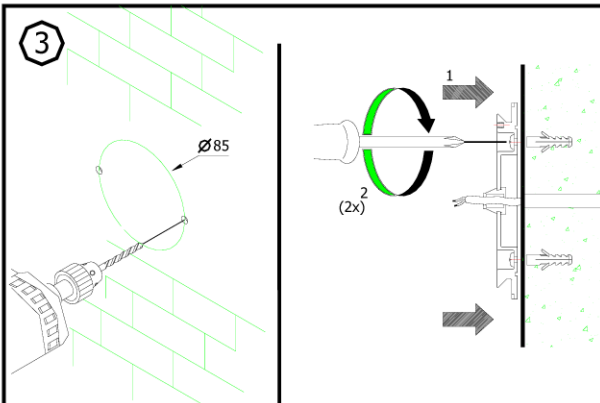
	A	B	C
CD-4102	250	150	150



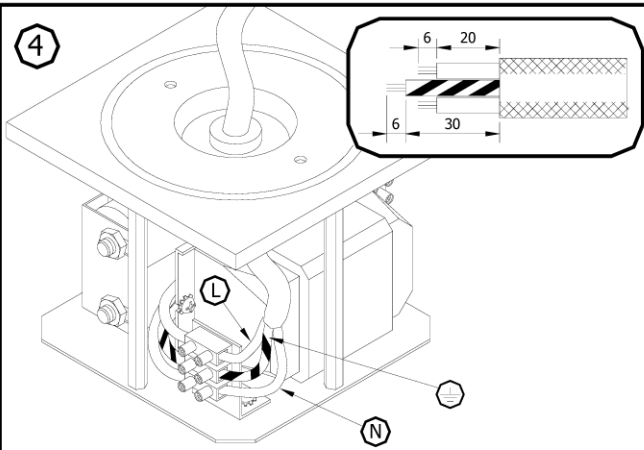
2



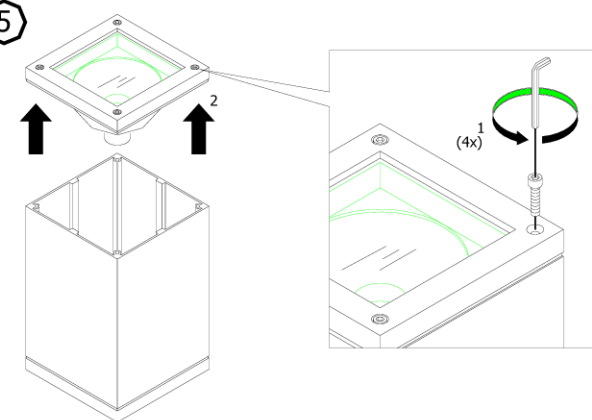
3



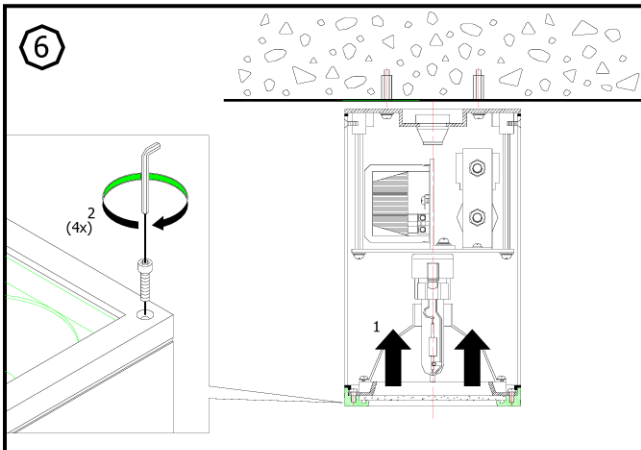
4



5



6



Applicable lamp :

1	230V 50Hz MAX HIT 70W

REMARK :

- 1 INSTALLATION SHOULD BE CARRIED OUT BY A QUALIFIED ELECTRICIAN IN ACCORDANCE WITH APPROPRIATE NATIONAL WIRING REGULATION.
- 2 DISCONNECT THE POWER BEFORE CHANGING THE LAMP.
- 3 THIS IS CLASS 1 LIGHTING FIXTURE AND MUST BE EARTHED.
- 4 DO NOT EXCEED THE MAXIMUM WATTAGE.

