

Safety door interlocks

TZM/TZF type series

Solenoid-operated versions

Features

- Interlocking device to EN 1088 with failsafe device
- Funnel-shaped entry for actuator, suitable for large door tolerances
- Holding force 1,500 N
- Operating head adjustable 3 x 90°
- Closed circuit-current principle (unlocked under voltage)

Cross-references

- General description: refer to page 3
- Contact configuration: see below
- Actuator: refer to page 54
- Accessories: refer to page 58
- Assembly instructions: refer to page 68
- Technical data: refer to page 69

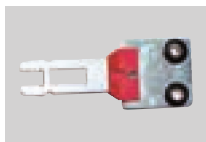
Options (on request)

- Plug connection
- Version with Viton seals for use with particularly aggressive media
- Individually coded actuator
- Other voltages



N.B.

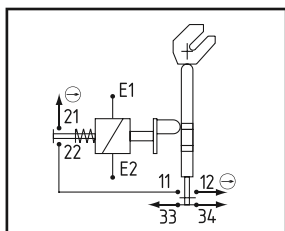
Actuator: standard actuator TZ/CO supplied. Refer to page 54 for dimensions and other actuators.



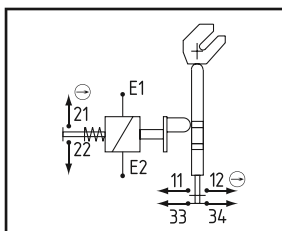
LED display: In the case of devices with LED display the NC contacts are not floating. Only sequencing circuitry may be used in which the two channels are controlled with positive potential.

Contact configurations

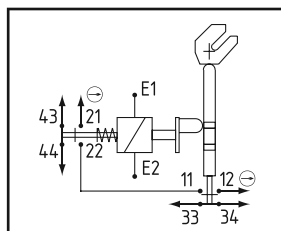
TZM..



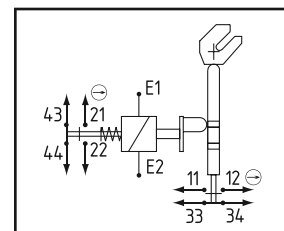
TZMW..



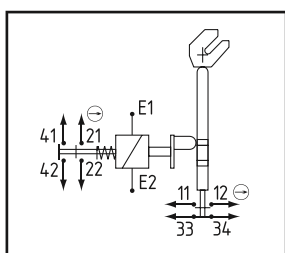
TZMC...



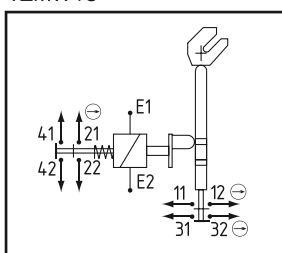
TZMCW..



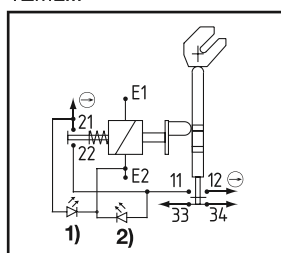
TZMW2MOE



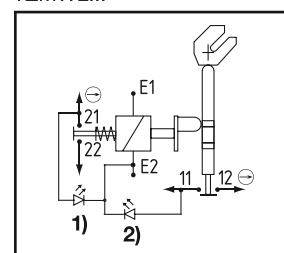
TZMW4Ö



TZML...



TZMWL...



Representations of the contacts with unlocked solenoid and open guard.

LED display: 1) green "locked", 2) yellow "door closed"

Test symbol (with respect to the basic design)



BIA 954023



A031156

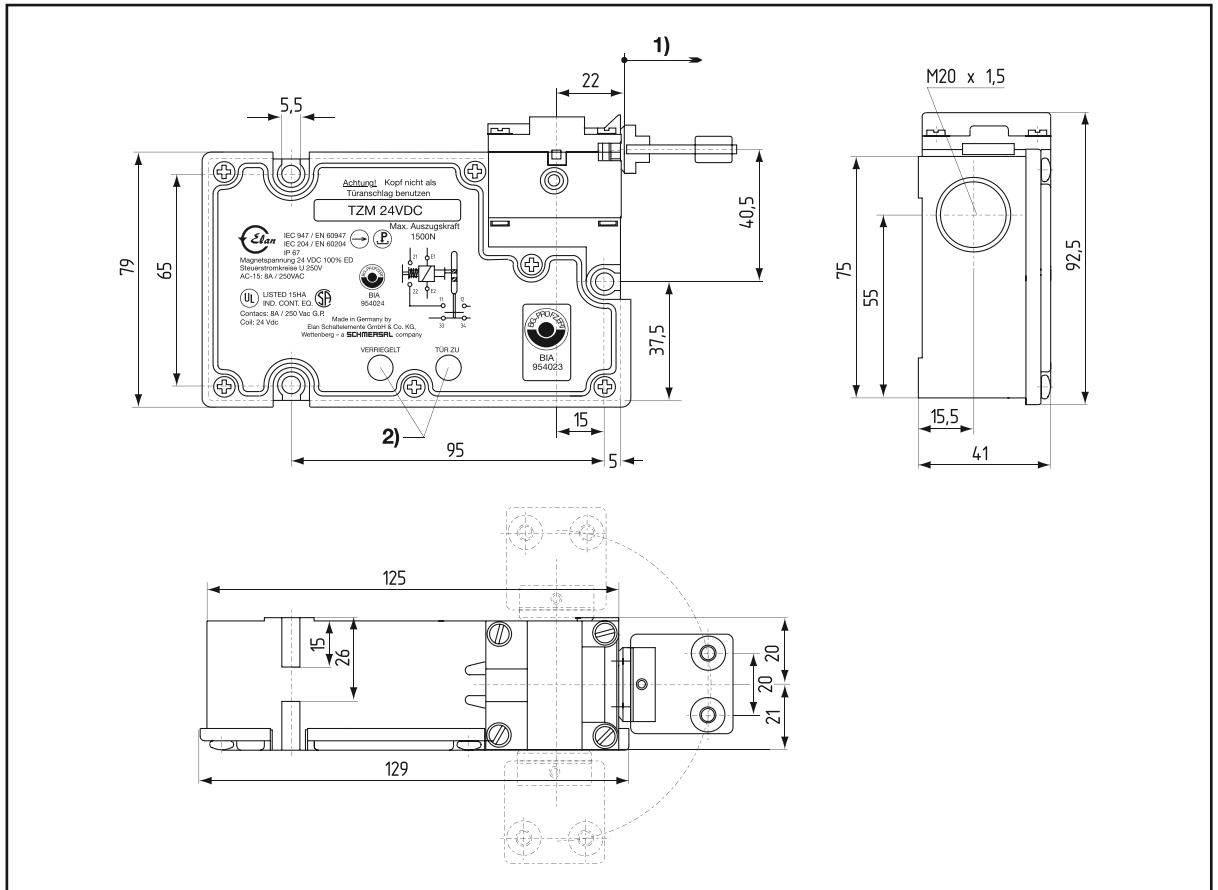
Scope of delivery

Door interlock, standard actuator, fixing material, disposable screws

Product table

Type	Version	Supply voltage	Part number
2 NC in series ...			
TZM	... + 1 NO	24 VDC	191 0000
TZM115	... + 1 NO	115 VAC	191 0420
TZM230	... + 1 NO	230 VAC	191 0300
TZMC	... + 2 NO	24 VDC	191 0091
TZMC115	... + 2 NO	115 VAC	191 0092
TZMC230	... + 2 NO	230 VAC	191 0093
TZML	... + 1 NO, with LED display	24 VDC	191 0060
2 NC parallel			
TZMW	... + 1 NO	24 VDC	191 0080
TZMW115	... + 1 NO	115 VAC	191 0480
TZMW230	... + 1 NO	230 VAC	191 0380
TZMCW	... + 2 NO	24 VDC	191 0094
TZMWL	... + with LED display	24 VDC	191 0085
3 NC parallel			
TZMW2MOE	... + 1 NO	24 VDC	191 0007
TZMW4Ö	4 NC parallel	24 VDC	191 0052

Dimensions TZM...



- 1) Dimensional base for actuator
- 2) LED display optional