

Torsgatan 2

Kv. Läraren 5

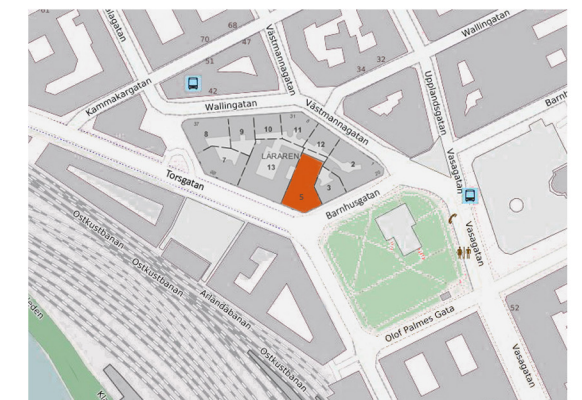
Plan 6, våning 4 tr

Idéskiss:

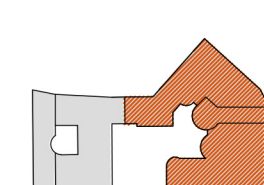
- 23 arbetsplatser
- 1 st mötesrum med 10 platser

- Yta ca 385 m²

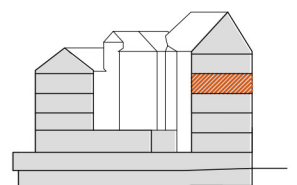
- 16,7 m² / arbetsplats



Situationsplan



Lokalen i huset



Sektion



Sign NK/SO



Skala 1:150
(Papper A3)



Arbetsplats:
Skrivbord 1400 x 800 mm
Hurts 800 x 350 mm

2022-06-21

