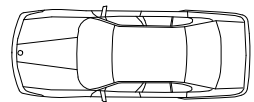
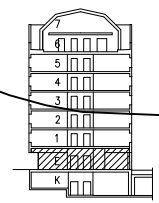
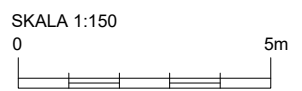


PLAN 2, BV

- 18 ARBETSPLATSER (BORDSSTÖRLEK 1400 mm)
- 3 TOUCH-DOWN PLATSER
- 2 MÖTESRUM
- 2 SAMTALSRUM
- 3 WC
- 1 RWC



KV. LÖNNEN 25
PLAN 2, ENTRÉPLAN
MÖBLERING

- KONTORSLANDSKAP
- MÖTESRUM
- SAMTALSRUM
- WC & RWC
- MATSAL
- FASTIGHTES YTOR

