

**BORGARFJORDSGATAN 12,**

Plan 1

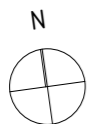
ca 558 kvm

55 Arbetsplatser

- INTERN YTA
- ÖPPET KONTOR
- TOUCHDOWN /WORK LOUNGE
- RECEPTION/EXTERN YTA
- MÖTESRUM
- TELEFONRUM
- FÖRRÅD/KOPIERINGSRUM
- TEKNIK
- WC/STÄD
- VILRUM
- LOUNGE/MATSAL
- PENTRY
- ENTRÉPIL
- UTRYMNINGSPIL
- 1400 x 800



SKALA 1:150  
0 1 2 5m

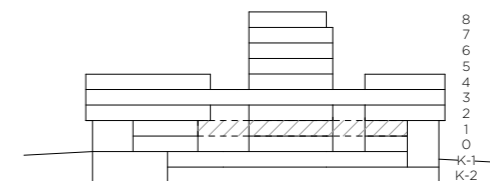
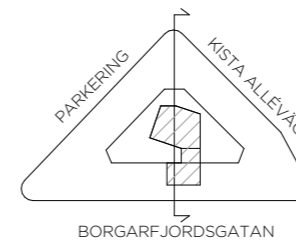


**KV. BORGARNÄS 1, NOD**

Skala 1:150 (A3)

2020-11-13

Studio Stockholm  
Arkitektur



**AL**  
ATRIUM LJUNGBERG