

Trädgårdsgatan 5

Inom Vallgraven 5:4
Entréplan

Idéskiss: 4

- 6 arbetsplatser

- 1 mötesrum 2 platser

- 1 teamsrum

- 1 WC

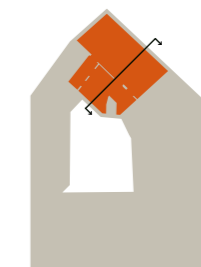
- 1 Pentry

- Yta ca 93 m²

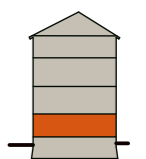
- ca 15,5 m² /arbetsplats



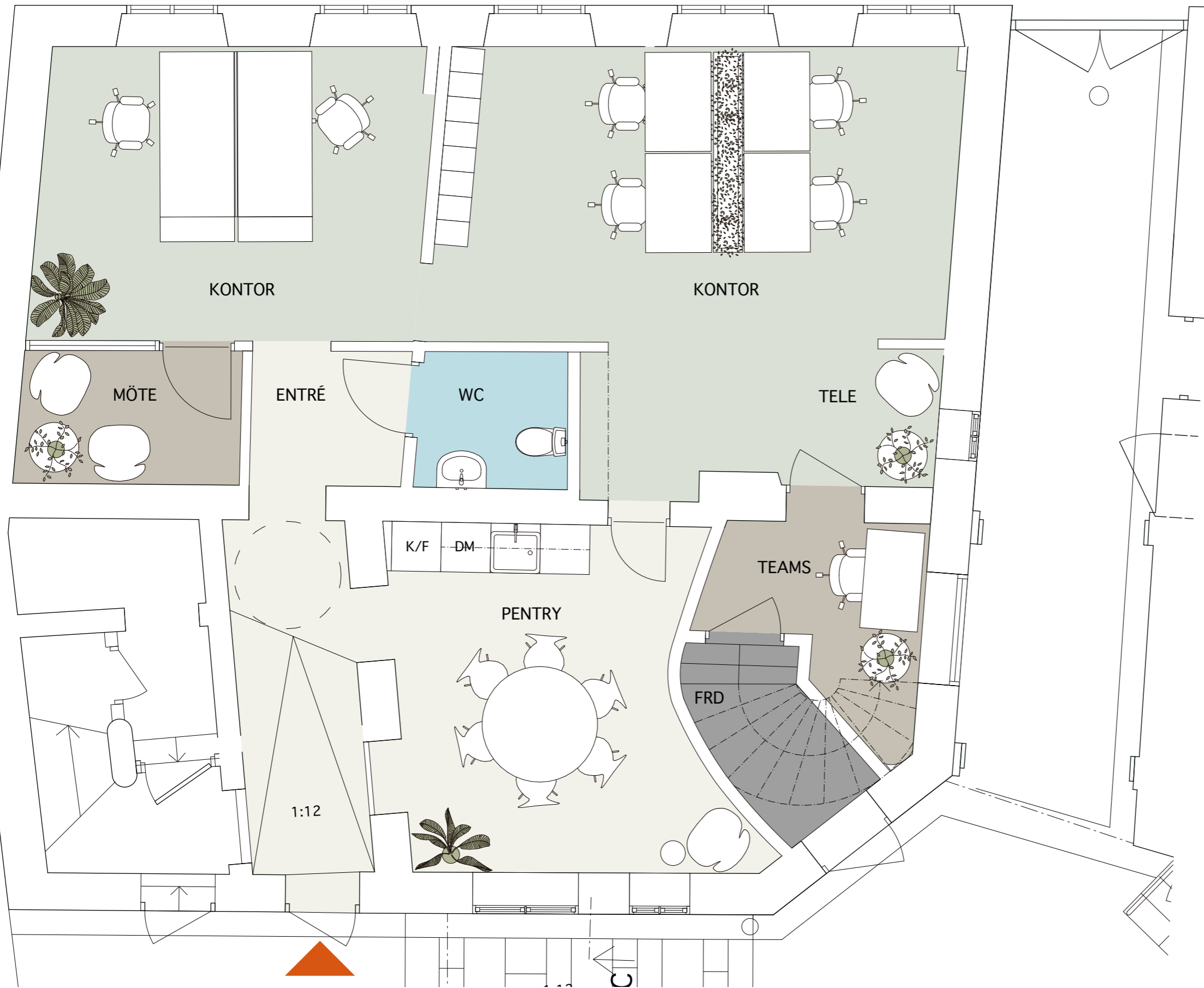
Situationsplan



Lokalen i huset

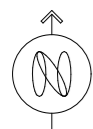


Sektion

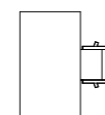


GAJD®arkitekter

Skissförslag hyresgästskiss



Skala 1:100
(Papper A3)



Arbetsplats:
Skrivbord 1400 x 800 mm

2023-10-30

NOVIER