



REVEALS AND MOLDINGS PROFILES

PROAKS METAL BUILDING SYSTEM



PROAKS METAL

We...

As Proaks Metal we would like to inform you about our products which we manufacture and market. We stand by our products reliability not only throughout the project and essembly stages but also in the course of utilization, even after years. Our sole purpose is earning your trust and deserving your preference for your next project based upon your impression of our products.

Finding the best solutions for your projects with Proaks products, prioritising our customers satisfaction in every step of production. Therefore, we process the best quality raw materials with our experience and fund of knowledge. On top of that, we guarantee our quality with the certificates we proudly own. Despite all, if any irregularities occur during application which are not in accordance with our standarts, we simply replace it.

That way the solution always provides satisfactory consequences. That result is the biggest source of pride for Proaks Metal staff. Constant drive for progress is the result of our passion and respect to our jobs.





WORLD QUALITY REGISTRAR

CERTIFICATE

Nr : A-221177 EC DECLARATION OF CONFORMITY AT UYGUNLUK BEYANI

Manufacturer / Üretici :

PROAKS METAL YAPI SİSTEMLERİ SANAYİ VE TİC. LTD. ŞTİ.

Address / Adres :

ORGANİZE SANAYİ BÖLGESİ BİRLİK KÜÇÜK SAN. SİT. 17. ADA 5. CAD. NO:29
BEYLİKDÜZÜ İSTANBUL TÜRKİYE TURKEY

Products / Ürün :

ALÇI LEVHA MÜDEHALE KAPAKLARI / PLASTERBOARD ACCESS PANEL
FUGA VE DETAY PROFİLLERİ / REVEALS AND MOLDINGS PROFILES
ASMA TAVAN, DUVAR BÖLME AKSESUARLARI / SUSPENDED CEILING, WALL PARTITION ACCESSORIES

Related Standards / İlgili Standartlar :

TS EN 14190:2014 - ALÇI LEVHALAR - TEKRAR İŞLEME TABİ TUTULARAK ELDE EDİLEN - TARİFLER, GEREKLER VE DENEY YÖNTEMLERİ / GYPSUM BOARD PRODUCTS FROM REPROCESSING - DEFINITIONS, REQUIREMENTS AND TEST METHODS
TS EN 14195:2014 - ALÇI LEVHA SİSTEMLERİNDE KULLANILAN METAL ÇERÇEVE BİLEŞENLERİ - TARİFLER, GEREKLER VE DENEY YÖNTEMLERİ / METAL FRAMING COMPONENTS FOR GYPSUM BOARD SYSTEMS - DEFINITIONS, REQUIREMENTS AND TEST METHODS

Base of Certification / Sertifikasyon Zeminini :

Technical File No: CE-PROAKS-221118

For the above products, the technical file and base product provided by the manufacturer is prepared on the basis of a voluntary test in accordance with the Construction Products Regulation 305/2011/EU Category I basic protection requirements.

The CE mark shown below can be used on the product at the discretion of the company, after the preparation of the necessary technical documents and declaration of conformity, and as long as other relevant directives and standards are complied with.

The use of CE marking is at the discretion of the company.

Yukarıda belirtilen ürünler için, üretici tarafından sunulan teknik dosya ve baz alınan ürün, gönüllü bir test temelinde

Yapı Malzemeleri Yönetmeliği 305/2011/AB temel koruma gereksinimlerine uygun hazırlanmışsa, gerekli teknik

belgelerin ve uygunluk beyanının hazırlanmasından sonra ve diğer ilgili direktifler ve standartlara uyum sağlandığı

sürece aşağıda gösterilen CE işareti firmanın inisiyatifiyle ürün üzerine kullanılabilir.

CE işaretinin kullanılması firmanın inisiyatifindedir.

CERT. PUBLICATION DATE
SERT. YAYIN TARİHİ
18.11.2022

CERTI. EXPIRY DATE
SERT. GEÇERLİLİK TARİHİ
17.11.2023


DIRECTOR

WQR International Certification Ltd.
www.wqrcert.com | info@wqrcert.com



The validity of the certificate can be checked through www.wqrcert.com
Bu belgenin geçerliliği www.wqrcert.com internet sitesinden kontrol edilebilir.



CERTIFICATE

Proaks Metal Yapı Sistemleri Sanayi ve Ticaret Ltd. Şti.

**Organize Sanayi Bölgesi Birlik Küçük San. Sit. 17. Ada 5. Cad.
No: 29 Beylikdüzü İstanbul Turkey**

The above-mentioned organization implements and maintains a management system in the following scope, and its compliance with the standard has been approved by KingCert.

ISO 45001:2018 Occupational Health and Safety Management System

Scope : Manufacturing and Sales of Galvanized Sheet Roof Connection Elements, Suspended Ceiling Partition Wall Accessories, Plastic Anchor Aluminum Intervention Cover and Detail Profiles
IAF/EA Code: 14,17



ACCREDITED
Management Systems
Certification Body
MSCB-196



This certificate is valid during above mentioned company perform the requirements of ISO 45001:2018 standard and fulfill all responsibilities to KingCert.

Certificate Publication Date : 18.11.2022

Cert. Last Issue Date : 18.11.2022

Cert. Expiry Date : 17.11.2023

Cert. Period Exp. Date : 17.11.2025

Certificate Number : I16687659530

King Cert International Certification Ltd.
Director

King Cert International
Certification Ltd.
Manastirski Livadi, Str. Lavski
Rid 19, Sofia Bulgaria
info@KingCert.com
FR.25. / 01.09.2016 / 04.06.2019 / 02

Hereby, King Cert International Certification Ltd., certifies that the above stated company have the appropriate management system according to the requirements of the above standards. This certificate is valid for three years as long as the system effectively maintained and surveillance audits are carried out. The validity of the certificate can be checked through www.KingCert.com. The certificate is property of King Cert International Certification Ltd. and shall be returned if so requested.



CERTIFICATE

**Proaks Metal Yapı Sistemleri Sanayi ve
Ticaret Ltd. Şti.**

**Organize Sanayi Bölgesi Birlik Küçük San. Sit. 17. Ada 5. Cad.
No: 29 Beylikdüzü İstanbul Turkey**

The above-mentioned organization implements and maintains a management system in the following scope, and its compliance with the standard has been approved by KingCert.

ISO 9001:2015 Quality Management System

**Scope : Manufacturing and Sales of Galvanized Sheet Roof Connection
Elements, Suspended Ceiling Partition Wall Accessories, Plastic Anchor
Aluminum Intervention Cover and Detail Profiles
IAF/EA Code: 14,17**



ACCREDITED
Management Systems
Certification Body
MSCB-196



This certificate is valid during above mentioned company perform the requirements of ISO 9001:2015 standard and fulfill all responsibilities to KingCert.

Certificate Publication Date : 18.11.2022

Cert. Last Issue Date : 18.11.2022

Cert. Expiry Date : 17.11.2023

Cert. Period Exp. Date : 17.11.2025

Certificate Number : I1668765817Q

King Cert International Certification Ltd.
Director

King Cert International
Certification Ltd.
Manastirski Livadi, Str. Lavski
Rid 19, Sofia Bulgaria
info@KingCert.com
FR.25. / 01.09.2016 / 04.06.2019 / 02

Hereby, King Cert International Certification Ltd., certifies that the above stated company have the appropriate management system according to the requirements of the above standards. This certificate is valid for three years as long as the system effectively maintained and surveillance audits are carried out. The validity of the certificate can be checked through www.KingCert.com. The certificate is property of King Cert International Certification Ltd. and shall be returned if so requested.



CERTIFICATE

**Proaks Metal Yapı Sistemleri Sanayi ve
Ticaret Ltd. Şti.**

**Organize Sanayi Bölgesi Birlik Küçük San. Sit. 17. Ada 5. Cad.
No: 29 Beylikdüzü İstanbul Turkey**

The above-mentioned organization implements and maintains a management system in the following scope, and its compliance with the standard has been approved by KingCert.

ISO 14001:2015 Environmental Management System

**Scope : Manufacturing and Sales of Galvanized Sheet Roof Connection
Elements, Suspended Ceiling Partition Wall Accessories, Plastic Anchor
Aluminum Intervention Cover and Detail Profiles
IAF/EA Code: 14,17**

This certificate is valid during above mentioned company perform the requirements of ISO 14001:2015 standard and fulfill all responsibilities to KingCert.

Certificate Publication Date : 18.11.2022

Cert. Last Issue Date : 18.11.2022

Cert. Expiry Date : 17.11.2023

Cert. Period Exp. Date : 17.11.2025

Certificate Number : I1668765895E



ACCREDITED
Management Systems
Certification Body
MSCB-196



King Cert International Certification Ltd.
Director

King Cert International
Certification Ltd.
Manastirski Livadi, Str. Lavski
Rid 19, Sofia Bulgaria
info@KingCert.com
FR.25. / 01.09.2016 / 04.06.2019 / 02

Hereby, King Cert International Certification Ltd., certifies that the above stated company have the appropriate management system according to the requirements of the above standards. This certificate is valid for three years as long as the system effectively maintained and surveillance audits are carried out. The validity of the certificate can be checked through www.KingCert.com. The certificate is property of King Cert International Certification Ltd. and shall be returned if so requested.

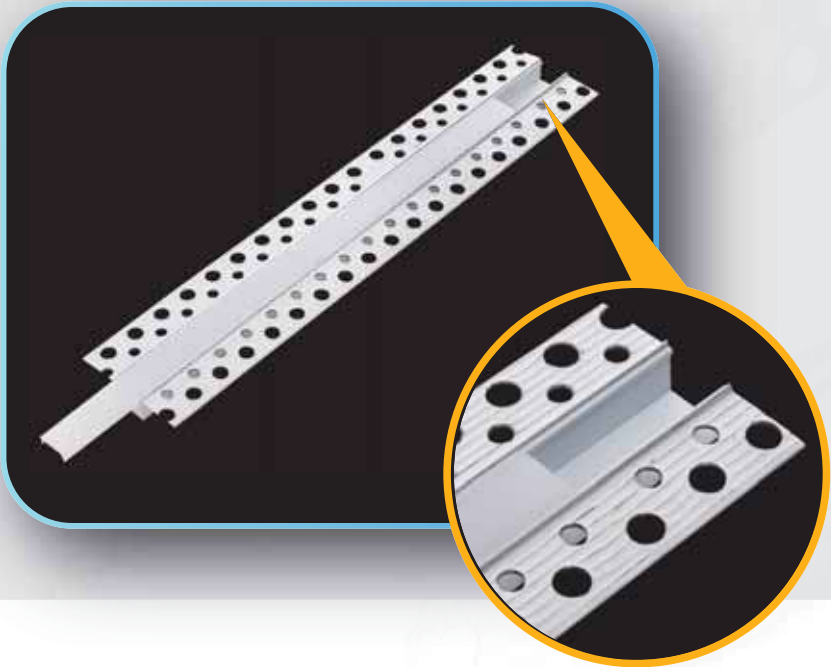
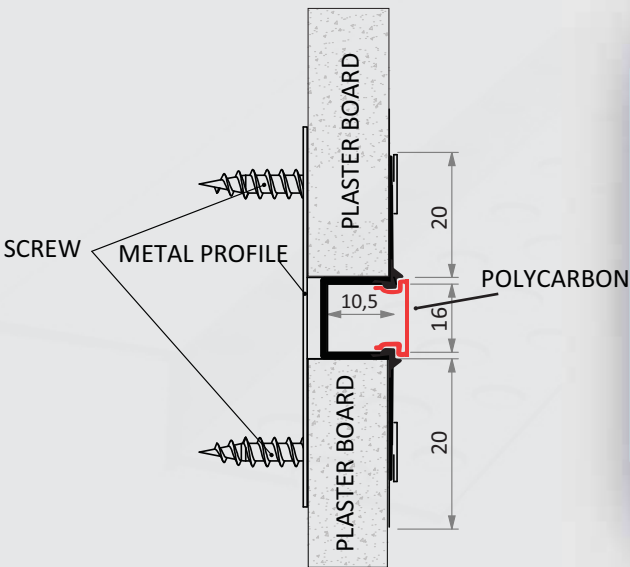
JOINT GAP AND DETAIL PROFILES

Profile accessories are used as complementary materials in plasterboard suspended ceiling partition systems. The raw material used in the accessories is manufactured with hot dip galvanization properties and provides protection against rust. None of our products are stainless. Due to the coating that our products have, their coating does not fall off when folded. When used in application standards, it distributes the load evenly and does not cause cracking in any component of the system. When our products are modular, they can be easily disassembled and assembled.



PROAKS METAL

LED PROFILES (WITH POLYCARBON COVER)



ALUMINUM LED PROFILE

Order Code	Product Type	Package Quantity
1300	LED PROFILE 16mm	25 pcs x 3m
1301	LED PROFILE 35mm	10 pcs x 3m
1302	LED PROFILE 46mm	10 pcs x 3m

Product Description:

It is used to prevent cracks in wide movable joints at the junctions of plasterboard suspended ceiling and partition wall systems and separate surfaces at junction points such as ceramics in wet areas. It provides ease of use and provides visual aesthetics without making any additions to the areas where it is used.

Area of Use

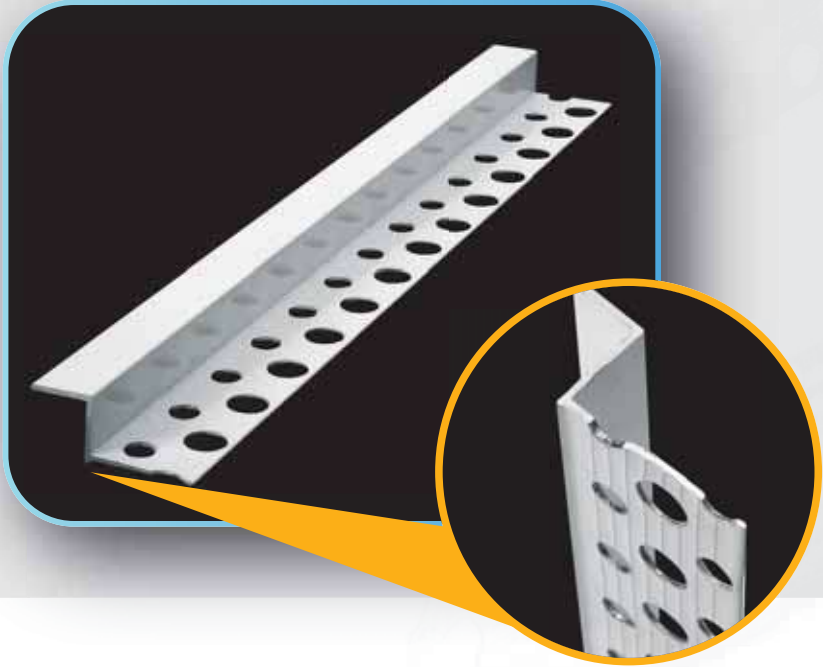
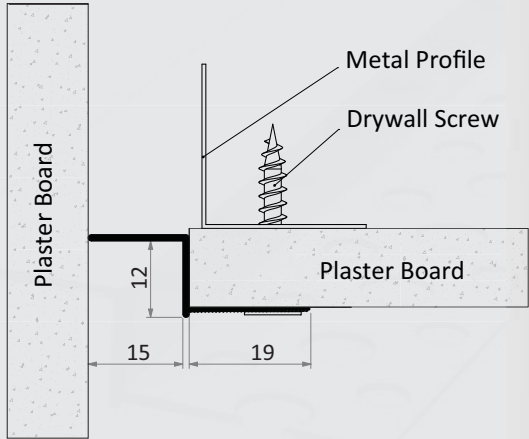
It is used in drywall, suspended ceiling and wall joints.

Product Storage Conditions

All joints and detail profiles are painted to avoid surface sensitivity, and galvanized profiles to avoid contact with water and in order to obtain a flat surface, it must be kept in a way that it will not be subjected to impact.

Our aluminum white painted products are in Ral 9016 code. Optional special color production can be done.

JOINT GAP AND DETAIL PROFILES



ALUMINUM Z PROFILE SHORT EDGE

Order Code	Product Type	Package Quantity
1110	Z profile 5 mm short side	50 pcs x 3m
1123	Z profile 10 mm short side	50 pcs x 3m
1124	Z profile 15 mm short side	50 pcs x 3m
1125	Z profile 20 mm short side	50 pcs x 3m
1174	Z profile 25 mm short side	50 pcs x 3m

Product description:

It is used to prevent cracks in wide movable joints at the junctions of plasterboard suspended ceiling and partition wall systems and separate surfaces at junction points such as ceramics in wet areas.
It provides ease of use and provides visual aesthetics without making any additions to the areas where it is used.

Area of Use

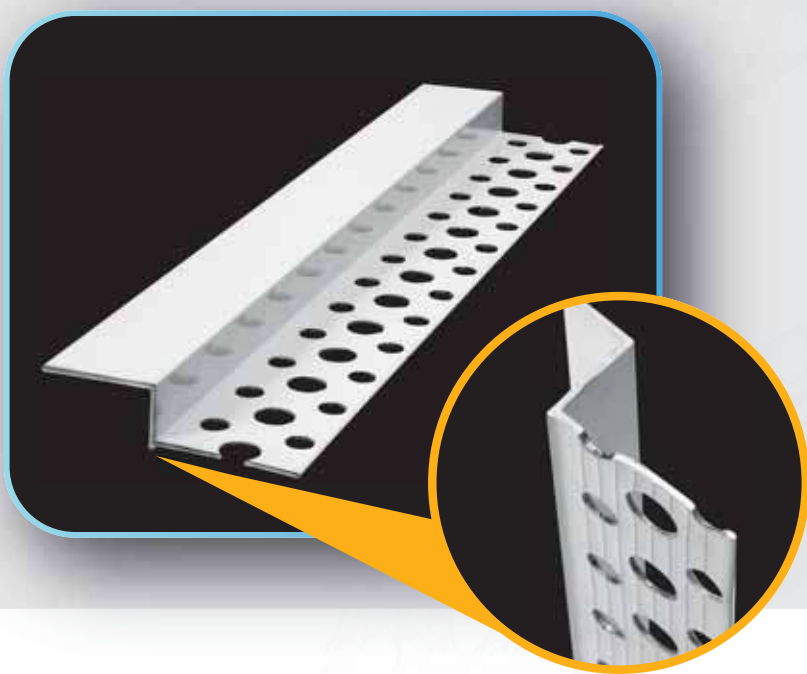
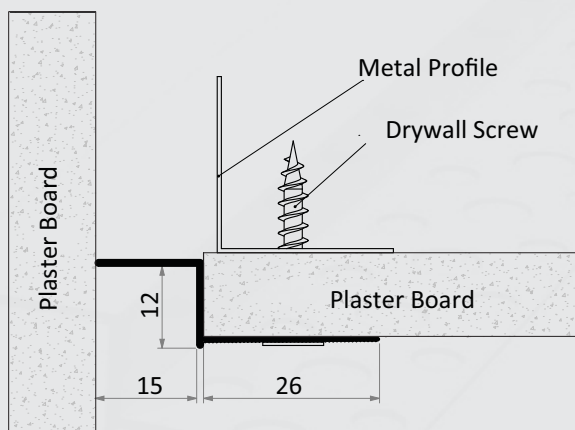
It is used in drywall, suspended ceiling and wall joints.

Product storage conditions

It is used to prevent cracks in wide movable joints at the junctions of plasterboard suspended ceiling and partition wall systems and separate surfaces at junction points such as ceramics in wet areas.
It provides ease of use and provides visual aesthetics without making any additions to the areas where it is used.

Our aluminum white painted products are in Ral 9016 code. Optional special color production can be done.

JOINT GAP AND DETAIL PROFILES



ALUMINUM PAINTED WHITE Z PROFILE LONG EDGE

Order Code	Product Type	Package Quantity
1112	Aluminum Z 10 mm	50 pcs x 3m
1113	Aluminum Z 15 mm	50 pcs x 3m
1114	Aluminum Z 20 mm	50 pcs x 3m
1116	Aluminum Z 30 mm	50 pcs x 3m

Product description:

It is used to prevent cracks in wide movable joints at the junctions of plasterboard suspended ceiling and partition wall systems and separate surfaces at junction points such as ceramics in wet areas.
It provides ease of use and provides visual aesthetics without making any additions to the areas where it is used.

Area of Use

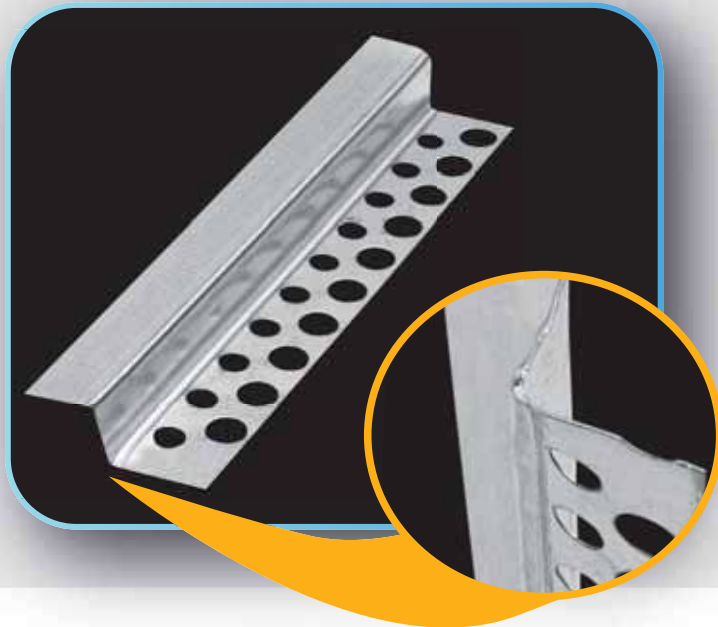
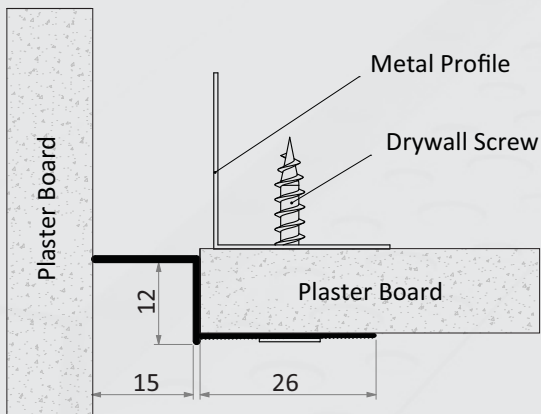
It is used in drywall, suspended ceiling and wall joints.

Product storage conditions

It is used to prevent cracks in wide movable joints at the junctions of plasterboard suspended ceiling and partition wall systems and separate surfaces at junction points such as ceramics in wet areas.
It provides ease of use and provides visual aesthetics without making any additions to the areas where it is used.

Our aluminum white painted products are in Ral 9016 code. Optional special color production can be done.

JOINT GAP AND DETAIL PROFILES



GALVANIZED Z PROFILE LONG EDGE

Order Code	Product Type	Package Quantity
1117	Galvanized z 15 mm	25 pcs/3 mt
1118	Galvanized z 10 mm	25 pcs/3 mt
1119	Galvanized z 20 mm	25 pcs/3 mt

Product description:

It is used to prevent cracks in wide movable joints at the junctions of plasterboard suspended ceiling and partition wall systems and separate surfaces at junction points such as ceramics in wet areas. It provides ease of use and provides visual aesthetics without making any additions to the areas where it is used.

Area of Use

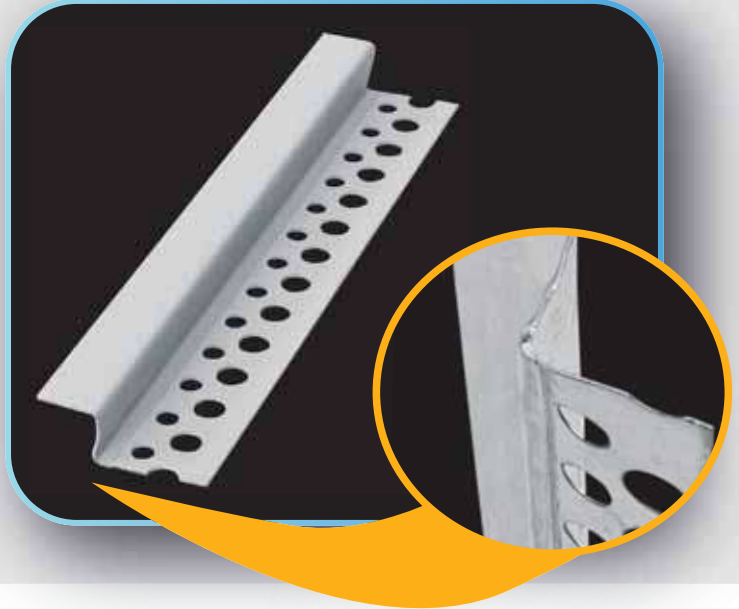
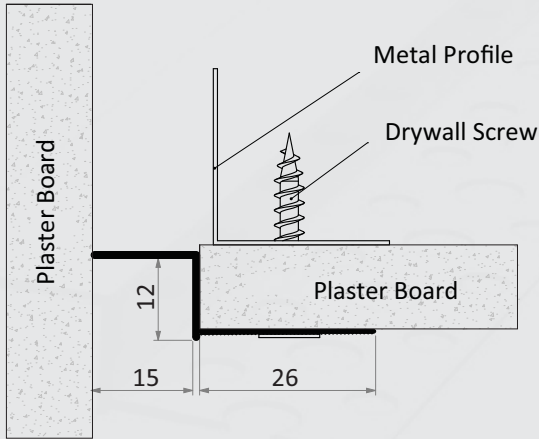
It is used in drywall, suspended ceiling and wall joints.

Product storage conditions

All joints and detail profiles are painted to avoid surface sensitivity, and galvanized profiles to avoid contact with water and in order to obtain a flat surface, it must be kept in a way that it will not be subjected to impact.

Our aluminum white painted products are in Ral 9016 code. Optional special color production can be done.

JOINT GAP AND DETAIL PROFILES



PVC Z PROFILE LONG SIDE

Order Code	Product Type	Package Quantity
1122	Pvc Z 15 mm	100 pcs x 3m

Product description:

It is used to prevent cracks in wide movable joints at the junctions of plasterboard suspended ceiling and partition wall systems and separate surfaces at junction points such as ceramics in wet areas. It provides ease of use and provides visual aesthetics without making any additions to the areas where it is used.

Area of Use

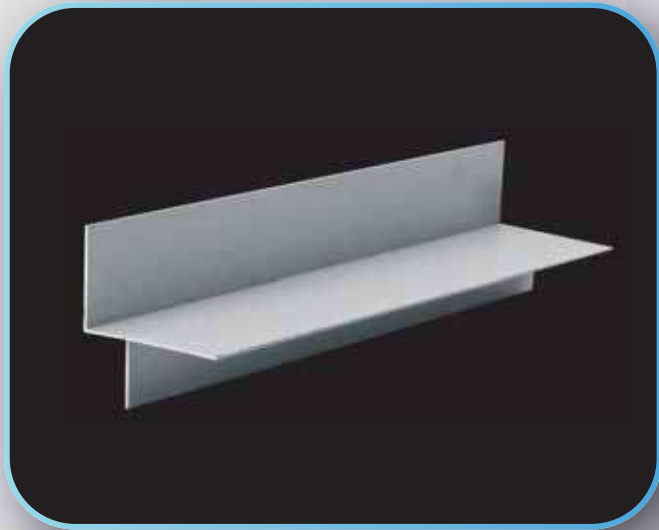
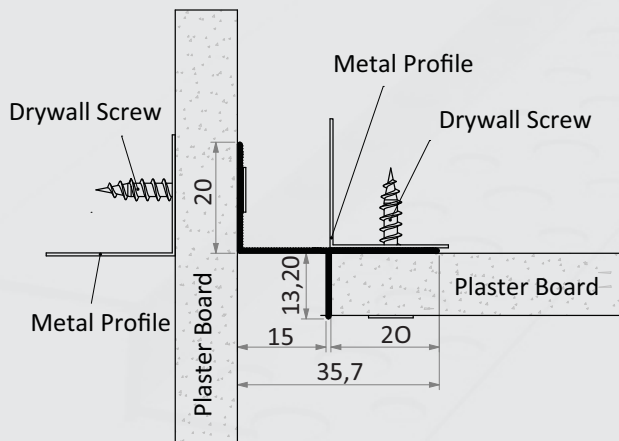
It is used in drywall, suspended ceiling and wall joints.

Product storage conditions

All joints and detail profiles are painted to avoid surface sensitivity, and galvanized profiles to avoid contact with water and in order to obtain a flat surface, it must be kept in a way that it will not be subjected to impact.

Our aluminum white painted products are in Ral 9016 code. Optional special color production can be done.

JOINT GAP AND DETAIL PROFILES



ALUMINUM T PROFILE

Order Code	Product Type	Package Quantity
1126	Aluminum T 10 mm	20 pcs x 3m
1127	Aluminum T 15 mm	20 pcs x 3m
1128	Aluminum T 20 mm	20 pcs x 3m
1129	Aluminum T 25 mm	20 pcs x 3m

Product description:

It is used to prevent cracks in wide movable joints at the junctions of plasterboard suspended ceiling and partition wall systems and separate surfaces at junction points such as ceramics in wet areas. It provides ease of use and provides visual aesthetics without making any additions to the areas where it is used.

Area of Use

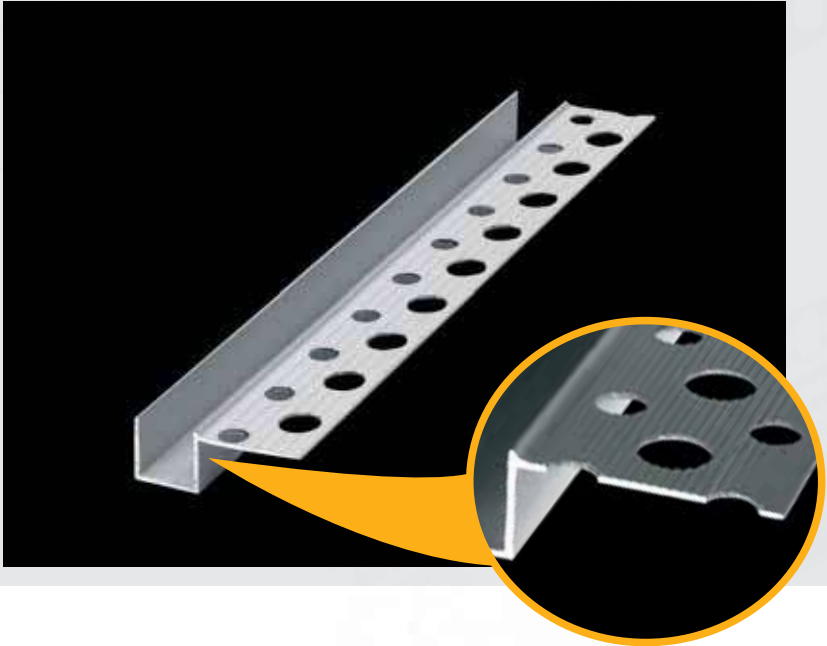
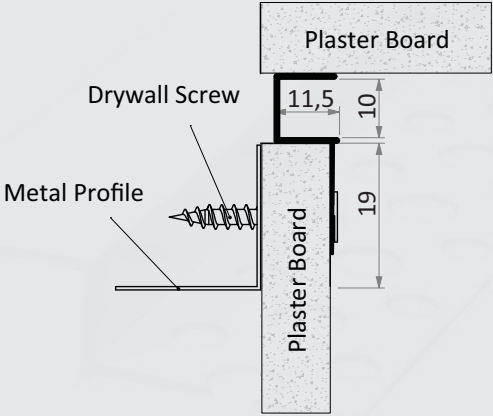
It is used in drywall, suspended ceiling and wall joints.

Product storage conditions

All joints and detail profiles are painted to avoid surface sensitivity, and galvanized profiles to avoid contact with water and in order to obtain a flat surface, it must be kept in a way that it will not be subjected to impact.

Our aluminum white painted products are in Ral 9016 code. Optional special color production can be done.

JOINT GAP AND DETAIL PROFILES



SINGLE WING JOINT GAP PROFILE SHORT EDGE

Order Code	Product Type	Package Quantity
1135	Aluminum Single Wing Gap Profile Short Edge U10 mm	25 pcs x 3m

Product description:

*It is used to prevent cracks in wide movable joints at the junctions of plasterboard suspended ceiling and partition wall systems and separate surfaces at junction points such as ceramics in wet areas.
It provides ease of use and provides visual aesthetics without making any additions to the areas where it is used.*

Area of Use

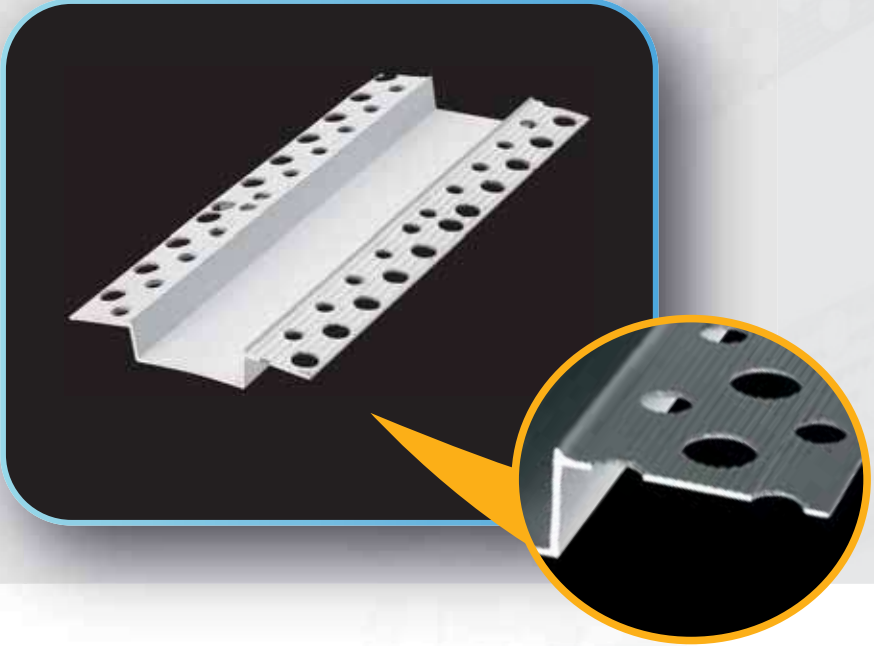
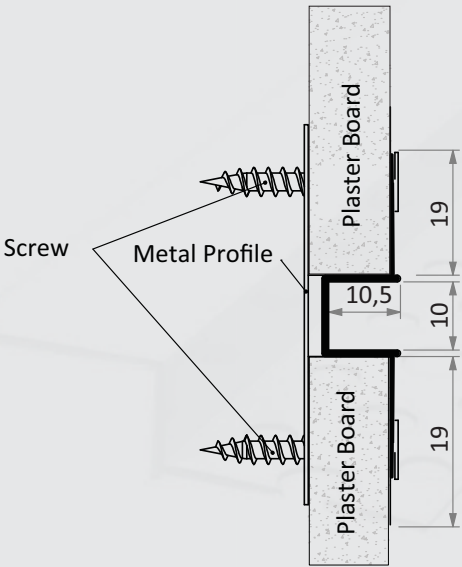
It is used in drywall, suspended ceiling and wall joints.

Product storage conditions

All joints and detail profiles are painted to avoid surface sensitivity, and galvanized profiles to avoid contact with water and in order to obtain a flat surface, it must be kept in a way that it will not be subjected to impact.

Our aluminum white painted products are in Ral 9016 code. Optional special color production can be done.

JOINT GAP AND DETAIL PROFILES



DOUBLE WING JOINT GAP PROFILE SHORT EDGE

Order Code	Product Type	Package Quantity
1140	Double wing gap Profile short side	10 mm 25 size /3 mt
1141	double wing gap profile short side	20 mm 10 size /3 mt
1153	double wing gap profile short side	30 mm 10 size /3 mt
1216	double wing gap profile short side	50 mm 10 size /3 mt

Product description:

*It is used to prevent cracks in wide movable joints at the junctions of plasterboard suspended ceiling and partition wall systems and separate surfaces at junction points such as ceramics in wet areas.
It provides ease of use and provides visual aesthetics without making any additions to the areas where it is used.*

Area of Use

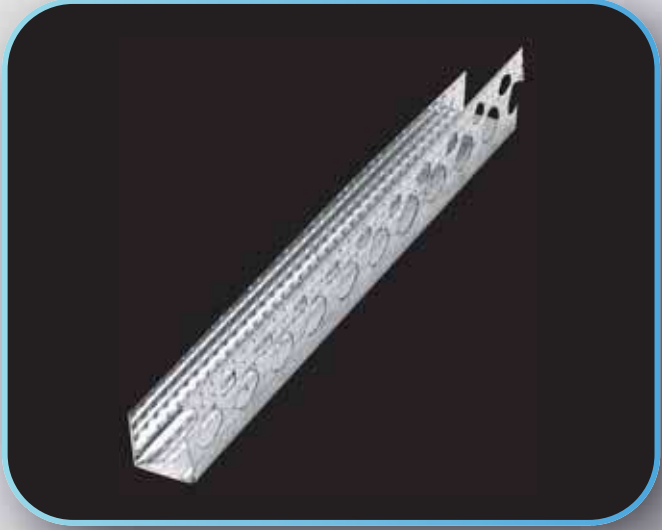
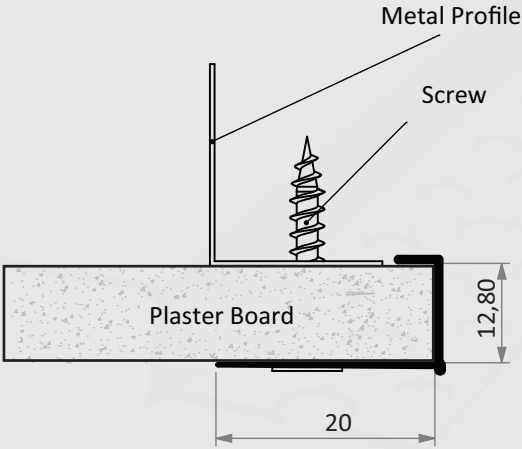
It is used in drywall, suspended ceiling and wall joints.

Product storage conditions

All joints and detail profiles are painted to avoid surface sensitivity, and galvanized profiles to avoid contact with water and in order to obtain a flat surface, it must be kept in a way that it will not be subjected to impact.

Our aluminum white painted products are in Ral 9016 code. Optional special color production can be done.

JOINT GAP AND DETAIL PROFILES



GALVANIZED DETAIL U PROFILE

Order Code	Product Type	Package Quantity
1143	Galvanized Detail U	60 pcs x 3m
1217	Galvanized Detail U	60 pcs x 2,5m

Product description:

It is used to create a straight and sharp line at plasterboard corner unit points and to create a hidden LED light band. It provides ease of use without making any additions to the area where it is used and provides visual aesthetics.

Area of Use

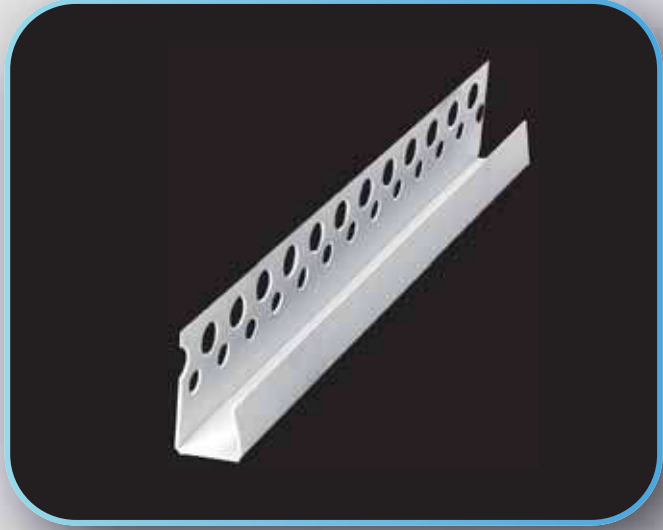
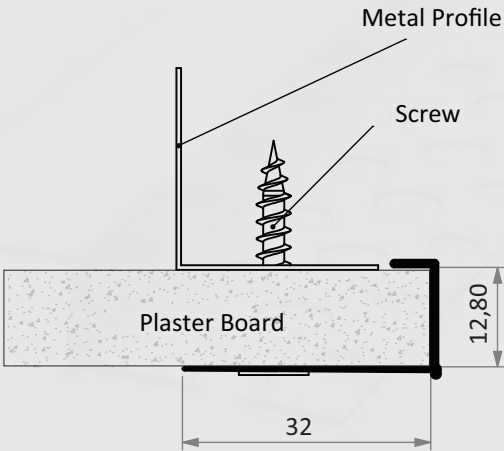
It is used in drywall, suspended ceiling and wall joints.

Product storage conditions

All joints and detail profiles are painted to avoid surface sensitivity, and galvanized profiles to avoid contact with water and in order to obtain a flat surface, it must be kept in a way that it will not be subjected to impact.

Our aluminum white painted products are in Ral 9016 code. Optional special color production can be done.

JOINT GAP AND DETAIL PROFILES



PVC DETAIL U PROFILE

Order Code
1144

Product Type
PVC Detail U

Package Quantity
50 pcs x 3m

Product description:

It is used to create a straight and sharp line at plasterboard corner unit points and to create a hidden LED light band. It provides ease of use without making any additions to the area where it is used and provides visual aesthetics.

Area of Use

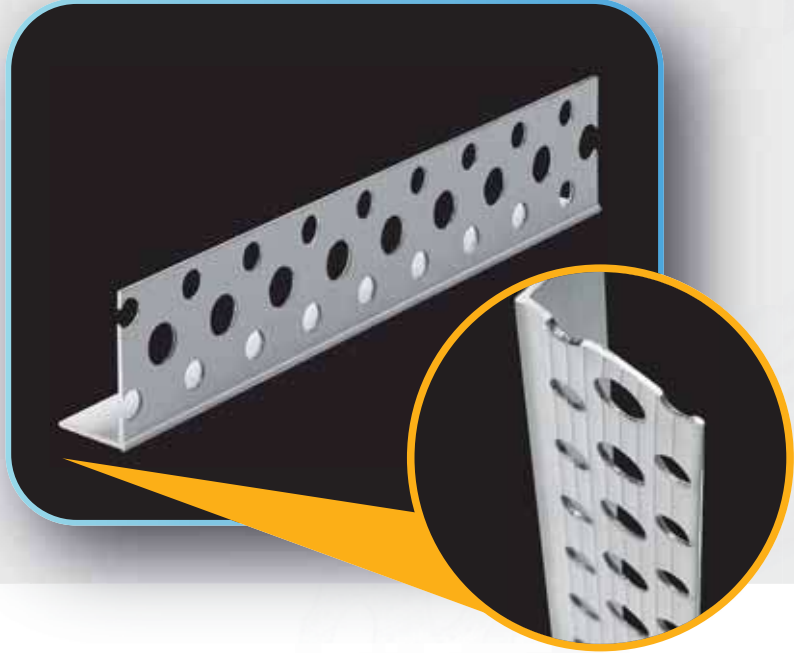
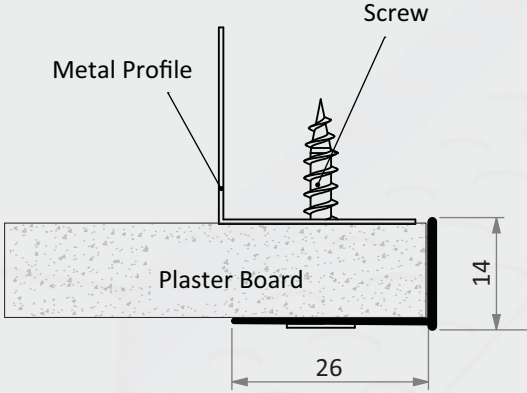
It is used in drywall, suspended ceiling and wall joints.

Product storage conditions

All joints and detail profiles are painted to avoid surface sensitivity, and galvanized profiles to avoid contact with water and in order to obtain a flat surface, it must be kept in a way that it will not be subjected to impact.

Our aluminum white painted products are in Ral 9016 code. Optional special color production can be done.

JOINT GAP AND DETAIL PROFILES



ALUMINUM WHITE PAINTED DETAIL L PROFILE

Order Code	Product Type	Package Quantity
1145	ALUMINUM PAINTED DETAIL L	25 pcs x 3m

Product description:

It is used to create a straight and sharp line at plasterboard corner unit points and to create a hidden LED light band. It provides ease of use without making any additions to the area where it is used and provides visual aesthetics.

Area of Use

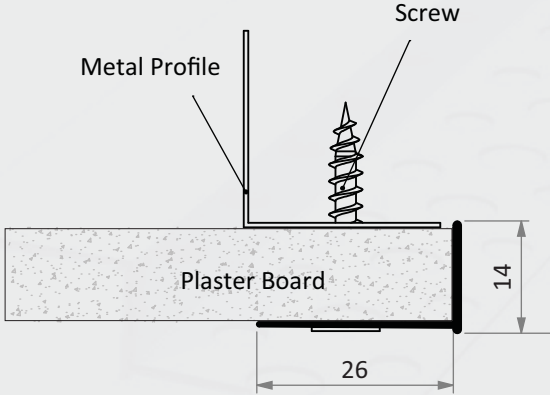
It is used in drywall, suspended ceiling and wall joints.

Product storage conditions

All joints and detail profiles are painted to avoid surface sensitivity, and galvanized profiles to avoid contact with water and in order to obtain a flat surface, it must be kept in a way that it will not be subjected to impact.

Our aluminum white painted products are in Ral 9016 code. Optional special color production can be done.

JOINT GAP AND DETAIL PROFILES



GALVANIZED DETAIL L PROFILE

Order Code	Product Type	Package Quantity
1147	GALVANIZED DETAIL L	50 pcs x 3m

Product description:

It is used to create a straight and sharp line at plasterboard corner unit points and to create a hidden LED light band. It provides ease of use without making any additions to the area where it is used and provides visual aesthetics.

Area of Use

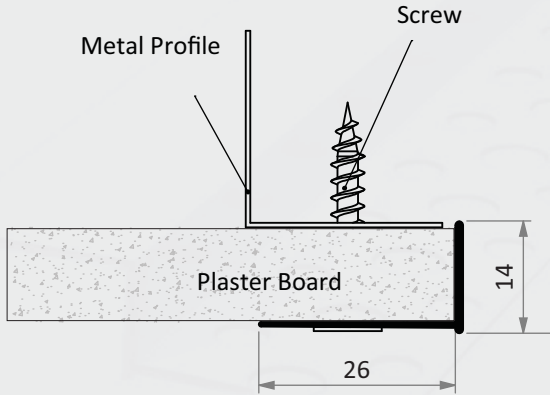
It is used in drywall, suspended ceiling and wall joints.

Product storage conditions

All joints and detail profiles are painted to avoid surface sensitivity, and galvanized profiles to avoid contact with water and in order to obtain a flat surface, it must be kept in a way that it will not be subjected to impact.

Our aluminum white painted products are in Ral 9016 code. Optional special color production can be done.

JOINT GAP AND DETAIL PROFILES



ALUMINUM DETAIL L PROFILE

Order Code
1194

Product Type
Aluminum Detail L

Package Quantity
25 pcs x 3m

Product description:

It is used to create a straight and sharp line at plasterboard corner unit points and to create a hidden LED light band. It provides ease of use without making any additions to the area where it is used and provides visual aesthetics. It does not corrode due to its raw material properties.

Area of Use

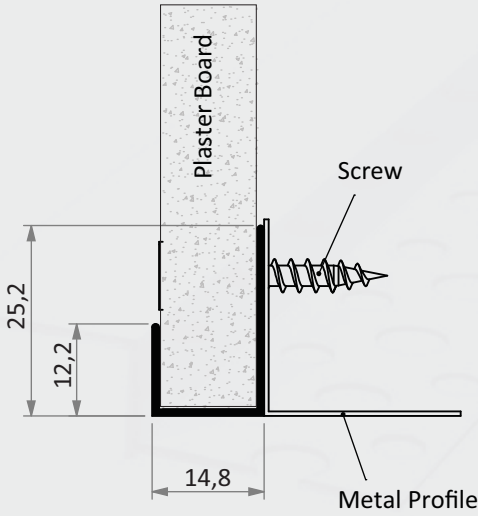
It is used in plasterboard, suspended ceiling and wall connection systems.

Product storage conditions

All joints and detail profiles are painted to avoid surface sensitivity, and galvanized profiles to avoid contact with water and in order to obtain a flat surface, it must be kept in a way that it will not be subjected to impact.

Our aluminum white painted products are in Ral 9016 code. Optional special color production can be done.

JOINT GAP AND DETAIL PROFILES



ALUMINUM CORNER END PROFILE

Order Code	Product Type	Package Quantity
1148	ALUMINUM CORNER END	50 pcs x 3m

Product description:

It is used to create a straight and sharp line at plasterboard corner unit points and to create a hidden LED light band. It provides ease of use without making any additions to the area where it is used and provides visual aesthetics.

Area of Use

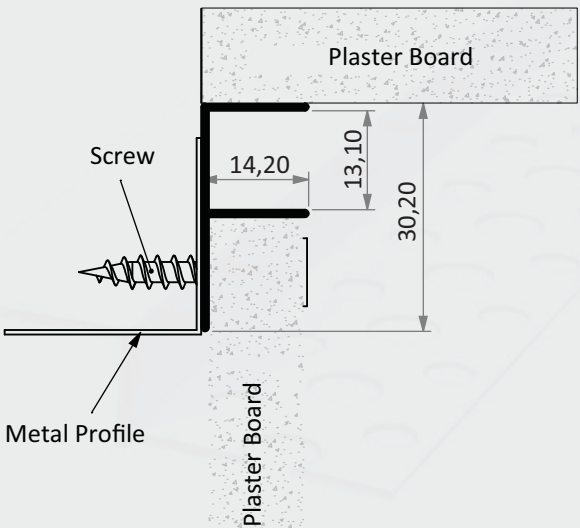
It is used in drywall, suspended ceiling and wall joints.

Product storage conditions

All joints and detail profiles are painted to avoid surface sensitivity, and galvanized profiles to avoid contact with water and in order to obtain a flat surface, it must be kept in a way that it will not be subjected to impact.

Our aluminum white painted products are in Ral 9016 code. Optional special color production can be done.

JOINT GAP AND DETAIL PROFILES



ALUMINUM F PROFILE

Order Code

1149

Product Type

ALUMINUM F

Package Quantity

20 pcs x 3m

Product description:

It is used to create a straight and sharp line at plasterboard corner unit points and to create a hidden LED light band. It provides ease of use without making any additions to the area where it is used and provides visual aesthetics.

Area of Use

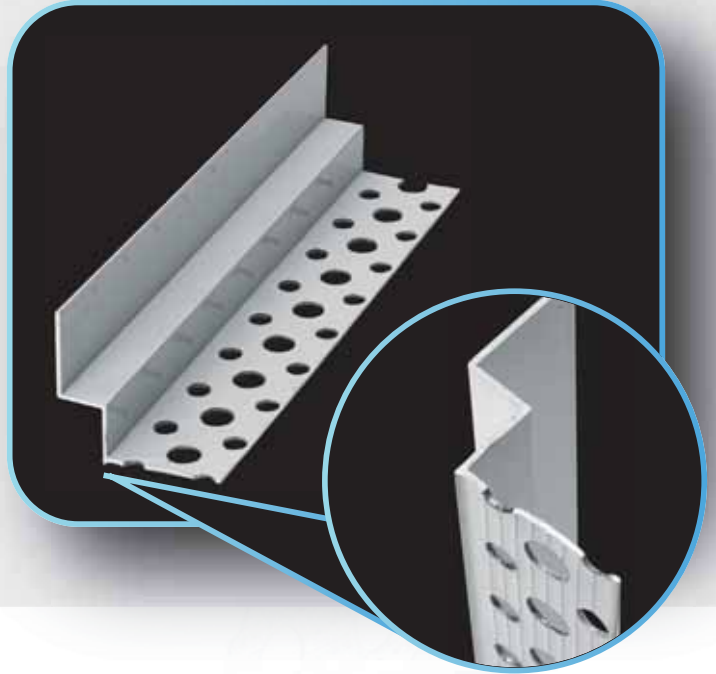
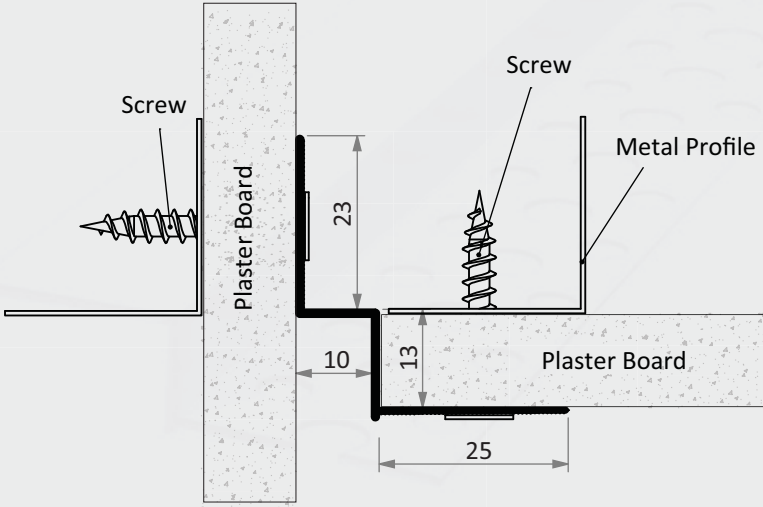
It is used in drywall, suspended ceiling and wall joints.

Product storage conditions

All joints and detail profiles are painted to avoid surface sensitivity, and galvanized profiles to avoid contact with water and in order to obtain a flat surface, it must be kept in a way that it will not be subjected to impact.

Our aluminum white painted products are in Ral 9016 code. Optional special color production can be done.

JOINT GAP AND DETAIL PROFILES



ALUMINUM GRADUAL Z PROFILE

Order Code	Product Type	Package Quantity
1151	ALUMINUM GRADUAL Z	25 pcs x 3m

Product description:

All joints and detail profiles are painted to avoid surface sensitivity, and galvanized profiles to avoid contact with water and in order to obtain a flat surface, it must be kept in a way that it will not be subjected to impact.

Area of Use

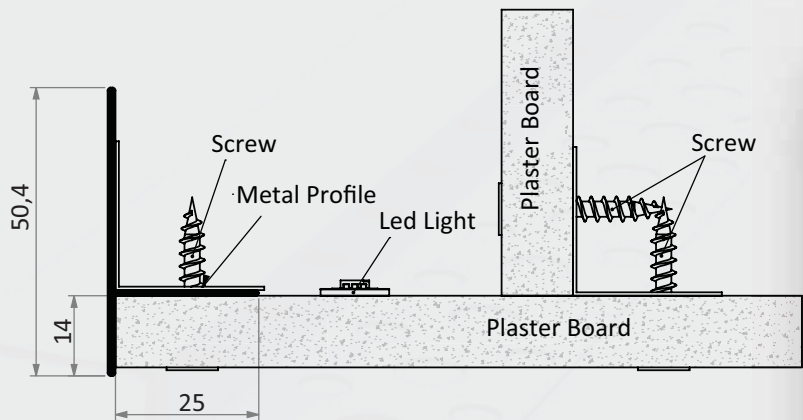
It is used in drywall, suspended ceiling and wall joints.

Product storage conditions

All joints and detail profiles are painted to avoid surface sensitivity, and galvanized profiles to avoid contact with water and in order to obtain a flat surface, it must be kept in a way that it will not be subjected to impact.

Our aluminum white painted products are in Ral 9016 code. Optional special color production can be done.

JOINT GAP AND DETAIL PROFILES



ALUMINUM HIDDEN LIGHT BAND PROFILE 50 mm

Order Code	Product Type	Package Quantity
1152	ALUMINUM HIDDEN LIGHT BAND	20 pcs x 3m

Product description:

It is used to create a straight and sharp line at plasterboard corner unit points and to create a hidden LED light band. It provides ease of use without making any additions to the area where it is used and provides visual aesthetics.

Area of Use

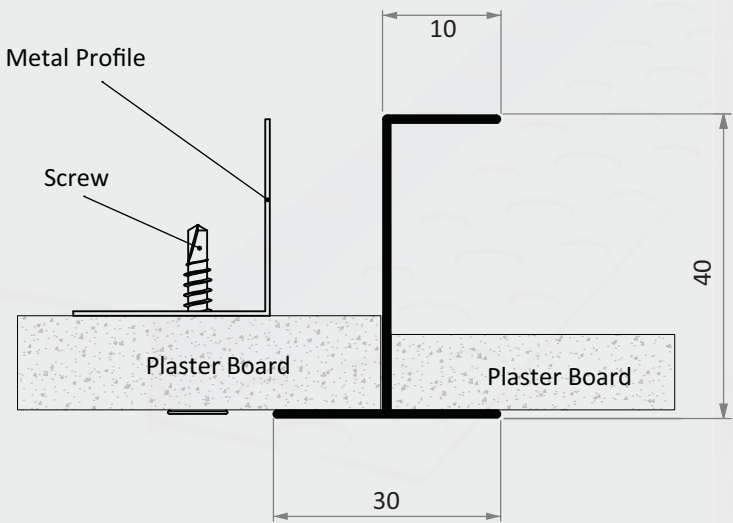
It is used in drywall, suspended ceiling and wall joints.

Product storage conditions

All joints and detail profiles are painted to avoid surface sensitivity, and galvanized profiles to avoid contact with water and in order to obtain a flat surface, it must be kept in a way that it will not be subjected to impact.

Our aluminum white painted products are in Ral 9016 code. Optional special color production can be done.

JOINT GAP AND DETAIL PROFILES



ALUMINUM CLIPINS H PROFILE

Order Code	Product Type	Package Quantity
1156	ALUMINUM CLIPINS H	20 pcs x 3m

Product description:

It is used to create a straight and sharp line at plasterboard corner unit points and to create a hidden LED light band. It provides ease of use without making any additions to the area where it is used and provides visual aesthetics.

Area of Use

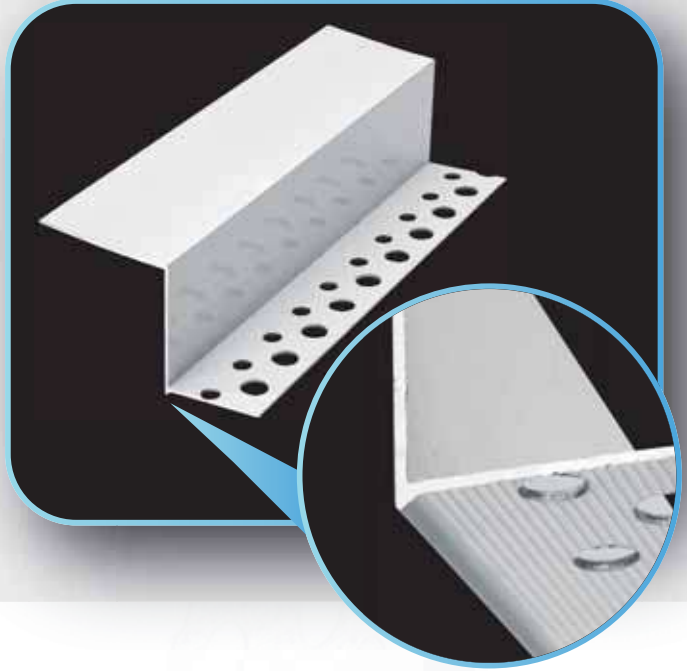
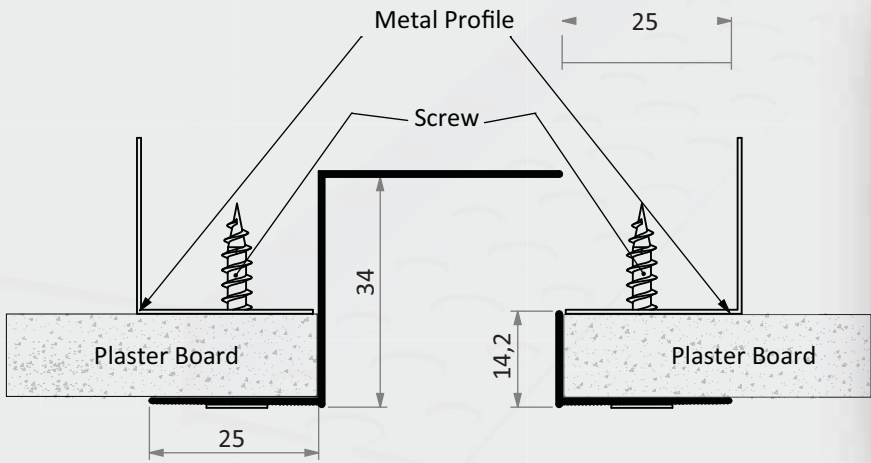
It is used in drywall, suspended ceiling and wall joints.

Product storage conditions

All joints and detail profiles are painted to avoid surface sensitivity, and galvanized profiles to avoid contact with water and in order to obtain a flat surface, it must be kept in a way that it will not be subjected to impact.

Our aluminum white painted products are in Ral 9016 code. Optional special color production can be done.

JOINT GAP AND DETAIL PROFILES



ALUMINUM DILETATION PROFILE

Order Code

1158

Product Type

Aluminum Dilatation Transition

Package Quantity

25 pcs x 3m

Product description:

It is used to create a straight and sharp line at plasterboard corner unit points and to create a hidden LED light band. It provides ease of use without making any additions to the area where it is used and provides visual aesthetics.

Area of Use

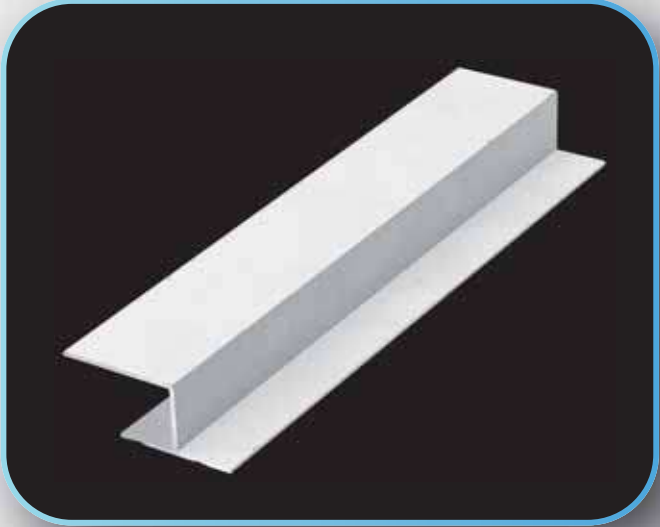
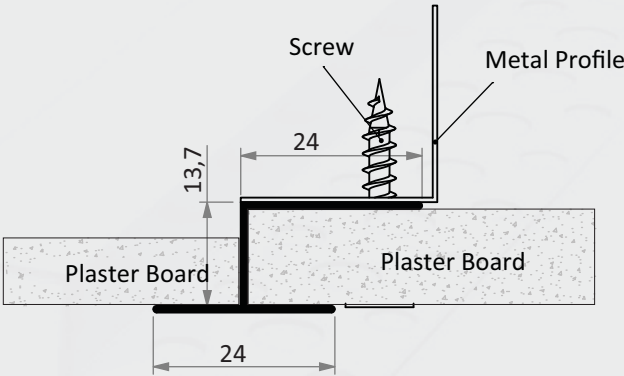
It is used in drywall, suspended ceiling and wall joints.

Product storage conditions

All joints and detail profiles are painted to avoid surface sensitivity, and galvanized profiles to avoid contact with water and in order to obtain a flat surface, it must be kept in a way that it will not be subjected to impact.

Our aluminum white painted products are in Ral 9016 code. Optional special color production can be done.

JOINT GAP AND DETAIL PROFILES



ALUMINUM PANEL PLATE U TRANSITION PROFILE

Order Code	Product Type	Package Quantity
1161	ALUMINUM PANEL PLATE U TRANSITION	20 pcs x 3m

Product description:

It is used to create a straight and sharp line at plasterboard corner unit points and to create a hidden LED light band. It provides ease of use without making any additions to the area where it is used and provides visual aesthetics.

Area of Use

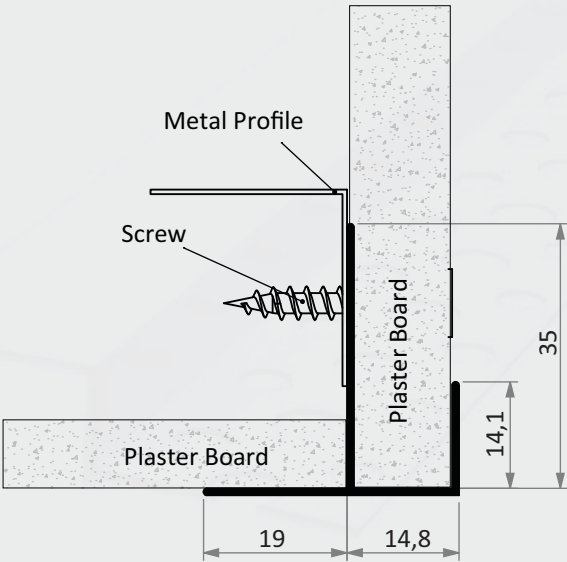
It is used in drywall, suspended ceiling and wall joints.

Product storage conditions

All joints and detail profiles are painted to avoid surface sensitivity, and galvanized profiles to avoid contact with water and in order to obtain a flat surface, it must be kept in a way that it will not be subjected to impact.

Our aluminum white painted products are in Ral 9016 code. Optional special color production can be done.

JOINT GAP AND DETAIL PROFILES



ALUMINUM DRYWALL FRAME CORNER TRANSITION PROFILE

Order Code	Product Type	Package Quantity
1162	ALUMINUM DRYWALL FRAME CORNER TRANSITION	20 pcs x 3m

Product description:

It is used to create a straight and sharp line at plasterboard corner unit points and to create a hidden LED light band. It provides ease of use without making any additions to the area where it is used and provides visual aesthetics.

Area of Use

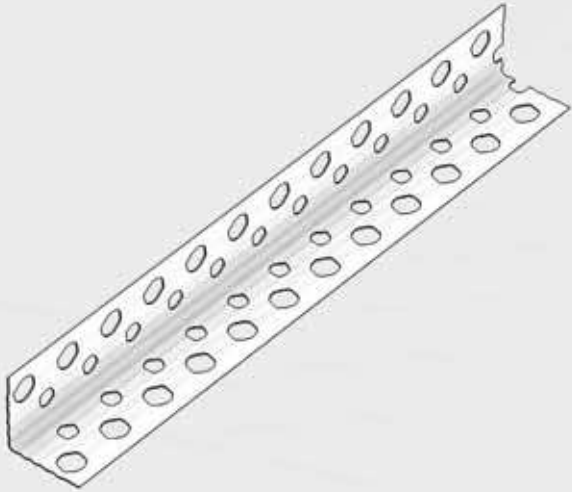
It is used in drywall, suspended ceiling and wall joints.

Product storage conditions

All joints and detail profiles are painted to avoid surface sensitivity, and galvanized profiles to avoid contact with water and in order to obtain a flat surface, it must be kept in a way that it will not be subjected to impact.

Our aluminum white painted products are in Ral 9016 code. Optional special color production can be done.

JOINT GAP AND DETAIL PROFILES



PERFORATED GALVANIZED CORNER PROFILE

Order Code	Product Type	Package Quantity
1175	19x19 perforated galvanized corner	50 pcs x 2.70 mt
1176	19x19 perforated galvanized corner	50 pcs x 3.00 mt
1183	23x23 perforated galvanized corner	50 pcs x 2.70 mt
1183	23x23 perforated galvanized corner	50 pcs x 3.00 mt

Product description:

Creating a smooth line at corner joints in plasterboard partition wall systems and increasing resistance to impacts.

Area of Use

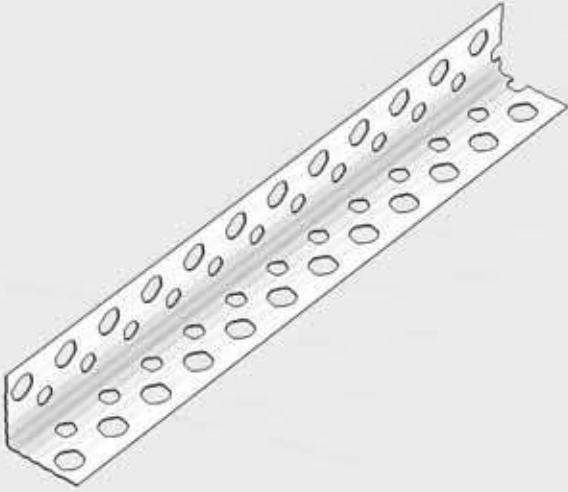
It is used in drywall, suspended ceiling and wall joints.

Product storage conditions

All joints and detail profiles are painted to avoid surface sensitivity, and galvanized profiles to avoid contact with water and in order to obtain a flat surface, it must be kept in a way that it will not be subjected to impact.

Our aluminum white painted products are in Ral 9016 code. Optional special color production can be done.

JOINT GAP AND DETAIL PROFILES



PERFORATED CORNER PROFILE ALUMINUM

Order Code	Product Type	Package Quantity
1188	21x21 ALM PERFORATED EDGE	50 pcs x 2,70 mt
1181	21x21 ALM PERFORATED EDGE	50 pcs x 3.00 mt
1200	23x23 ALM PERFORATED EDGE	50 pcs x 2,70 mt
1201	23x23 ALM PERFORATED EDGE	50 pcs x 3.00 mt

Product description:

Creating a smooth line at corner joints in plasterboard partition wall systems and increasing resistance to impacts.

Area of Use

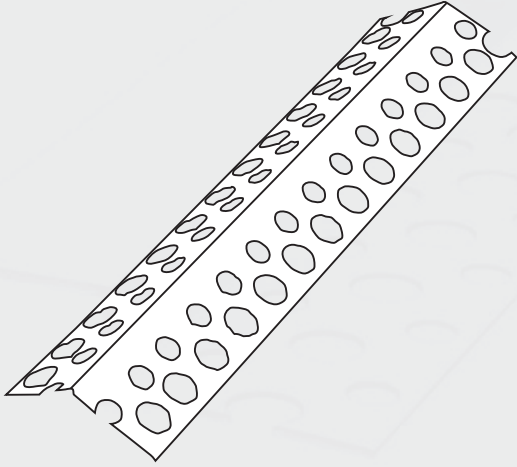
It is used in drywall, suspended ceiling and wall joints.

Product storage conditions

All joints and detail profiles are painted to avoid surface sensitivity, and galvanized profiles to avoid contact with water and in order to obtain a flat surface, it must be kept in a way that it will not be subjected to impact.

Our aluminum white painted products are in Ral 9016 code. Optional special color production can be done.

JOINT GAP AND DETAIL PROFILES



GALVANIZED 135° ANGLE PERFORATED CORNER PROFILE

Order Code	Product Type	Package Quantity
1186	135° Angled Perforated Corner Profile Galvanized	50 pcs x 2,70 m.

Product description:

Creating a smooth line at corner joints in plasterboard partition wall systems and increasing resistance to impacts.

Area of Use

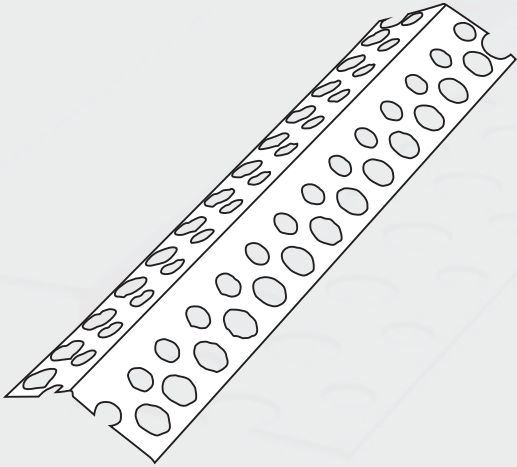
It is used in drywall, suspended ceiling and wall joints.

Product storage conditions

All joints and detail profiles are painted to avoid surface sensitivity, and galvanized profiles to avoid contact with water and in order to obtain a flat surface, it must be kept in a way that it will not be subjected to impact.

Our aluminum white painted products are in Ral 9016 code. Optional special color production can be done.

JOINT GAP AND DETAIL PROFILES



ALUMINUM 135° ANGLE HOLE CORNER PROFILE

Order Code	Product Type	Package Quantity
1228	135° Angled Perforated Corner Profile Aluminum	50 pcs x 2,70 m.

Product description:

Creating a smooth line at corner joints in plasterboard partition wall systems and increasing resistance to impacts. It does not corrode due to its raw material properties.

Area of Use

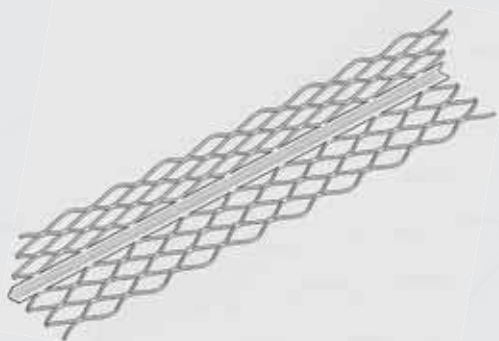
It is used in drywall, suspended ceiling and wall joints.

Product storage conditions

All joints and detail profiles are painted to avoid surface sensitivity, and galvanized profiles to avoid contact with water and in order to obtain a flat surface, it must be kept in a way that it will not be subjected to impact.

Our aluminum white painted products are in Ral 9016 code. Optional special color production can be done.

JOINT GAP AND DETAIL PROFILES



DIAMOND-SHAPED CORNER PROFILE

Order Code	Product Type	Package Quantity
1184	Diamond shaped corner profile galvanized	25 pcs x 2,70 m.
1191	Diamond shaped corner profile galvanized	25 pcs x 3 m.

Product description:

Creating a smooth line at corner joints in plasterboard partition wall systems and increasing resistance to impacts. Thanks to its diamond-shaped edges, it becomes easier to hold mortar.

Area of Use

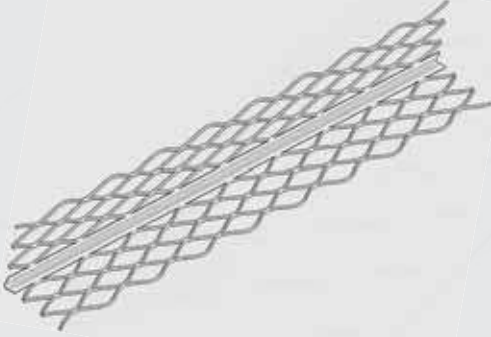
It is used in drywall, suspended ceiling and wall joints.

Product storage conditions

All joints and detail profiles are painted to avoid surface sensitivity, and galvanized profiles to avoid contact with water and in order to obtain a flat surface, it must be kept in a way that it will not be subjected to impact.

Our aluminum white painted products are in Ral 9016 code. Optional special color production can be done.

JOINT GAP AND DETAIL PROFILES



ALUMINUM DIAMOND-SHAPED CORNER PROFILE

Order Code	Product Type	Package Quantity
1190	Diamond shaped corner profile ALUMINUM	25 pcs x 2,70 m.
1182	Diamond shaped corner profile ALUMINUM	25 pcs x 3 m.

Product description:

Creating a smooth line at corner joints in plasterboard partition wall systems and increasing resistance to impacts. It does not corrode due to its raw material properties. Thanks to its diamond-shaped edges, it becomes easier to hold mortar.

Area of Use

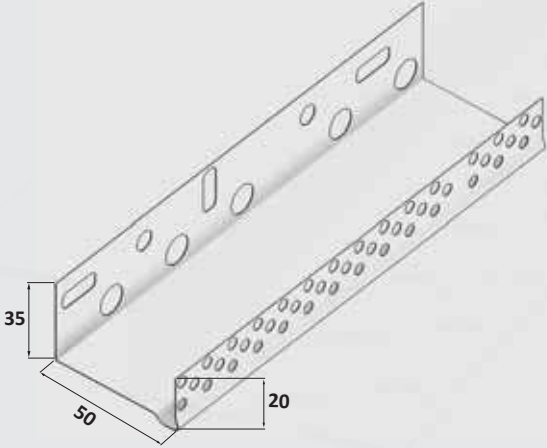
It is used in drywall, suspended ceiling and wall joints.

Product storage conditions

All joints and detail profiles are painted to avoid surface sensitivity, and galvanized profiles to avoid contact with water and in order to obtain a flat surface, it must be kept in a way that it will not be subjected to impact.

Our aluminum white painted products are in Ral 9016 code. Optional special color production can be done.

JOINT GAP AND DETAIL PROFILES



ALUMINUM WATER BASE PROFILE

Order Code	Product Type	Package Quantity
1400	30 mm WATER BASE PROFILE	8 pcs x 2,50 m
1401	50 mm WATER BASE PROFILE	8 pcs x 2,50 m
1402	70 mm WATER BASE PROFILE	8 pcs x 2,50 m
1403	80 mm WATER BASE PROFILE	8 pcs x 2,50 m
1404	100 mm WATER BASE PROFILE	8 pcs x 2,50 m
1405	140 mm WATER BASE PROFILE	8 pcs x 2,50 m

Product description:

In order to determine the starting levels of thermal insulation boards, to protect the finish at the bottom and, when necessary, at the side. It is the reference profile used for this purpose. Its widths vary depending on the insulation thickness.

Area of Use

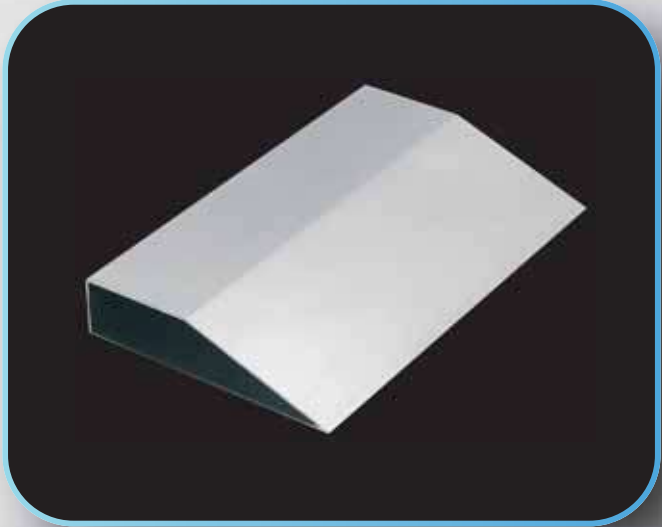
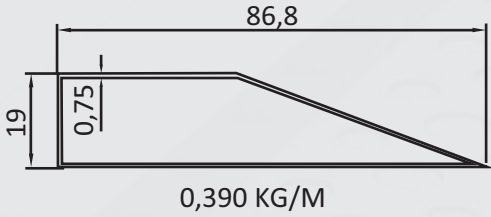
It is used in exterior mountings.

Product storage conditions

All joints and detail profiles are painted to avoid surface sensitivity, and galvanized profiles to avoid contact with water and in order to obtain a flat surface, it must be kept in a way that it will not be subjected to impact.

Our aluminum white painted products are in Ral 9016 code. Optional special color production can be done.

JOINT GAP AND DETAIL PROFILES



KNIFE GAUGE

Order Code
1165

Product Type
KNIFE GAUGE

Package Quantity
10 pcs x 3m

Product description:

It is used to prevent cracks in wide and moving joints at plasterboard ceiling joints. It provides ease of use without making any additions to the areas where it is used and provides visual aesthetics in the area where it is used.

Area of Use

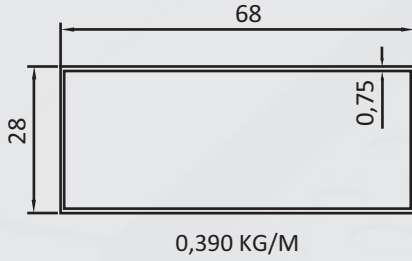
It is used in drywall, suspended ceiling and wall joints.

Product storage conditions

All joints and detail profiles are painted to avoid surface sensitivity, and galvanized profiles to avoid contact with water and in order to obtain a flat surface, it must be kept in a way that it will not be subjected to impact.

Our aluminum white painted products are in Ral 9016 code. Optional special color production can be done.

JOINT GAP AND DETAIL PROFILES



BOX GAUGES

Order Code	Product Type	Package Quantity
1171	BOX GAUGE 30x70 mm	10 pcs x 3m

Product description:

It is used to prevent cracks in wide and moving joints at plasterboard ceiling joints. It provides ease of use without making any additions to the areas where it is used and provides visual aesthetics in the area where it is used.

Area of Use

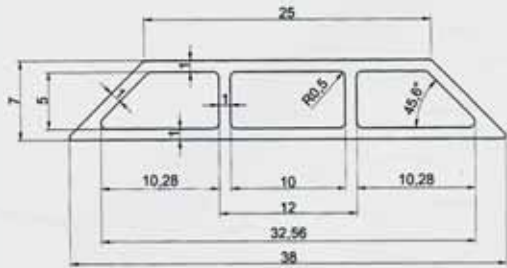
It is used in drywall, suspended ceiling and wall joints.

Product storage conditions

All joints and detail profiles are painted to avoid surface sensitivity, and galvanized profiles to avoid contact with water and in order to obtain a flat surface, it must be kept in a way that it will not be subjected to impact.

Our aluminum white painted products are in Ral 9016 code. Optional special color production can be done.

JOINT GAP AND DETAIL PROFILES



Plaster Strip Bar

Order Code	Product Type	Package Quantity
1166	Plaster Strip Bar 5 mm	30 pcs x 3m
1167	Plaster Strip Bar 7 mm	30 pcs x 3m
1169	Plaster Strip Bar 7 mm	30 pcs x 2,70m
1170	Plaster Strip Bar 7 mm	30 pcs x 2,70m
1171	Plaster Strip Bar 7 mm	30 pcs x 3m
1172	Plaster Strip Bar 7 mm PRO	30 pcs x 2.70 m
1173	Plaster Strip Bar 7 mm PRO	30 pcs x 3 m

Product description:

It is a profile that can be used more than once to eliminate wall curves during the plastering process.

Area of Use

It is used in wall plaster applications.

Product storage conditions

All joints and detail profiles are painted to avoid surface sensitivity, and galvanized profiles to avoid contact with water and in order to obtain a flat surface, it must be kept in a way that it will not be subjected to impact.

Our aluminum white painted products are in Ral 9016 code. Optional special color production can be done.

JOINT GAP AND DETAIL PROFILES



GALVANIZED FLUSH MOUNTED PLASTER STRIP BAR

Order Code	Product Type	Package Quantity
1230	Plaster Strip Bar 6 mm	50 pcs x 2,70 m
1231	Plaster Strip Bar 10 mm	50 pcs x 2,70 m
1232	Plaster Strip Bar 6 mm	50 pcs x 3 m
1233	Plaster Strip Bar 10 mm	50 pcs x 3 m

Product description:

Thanks to the flush-mounted galvanized plaster strip that remains under the plaster, a surface of the same thickness is obtained at every point. The final surface allows flawless plaster application. Based on the application, the distance between the profiles should be at least 180 cm.

Area of Use

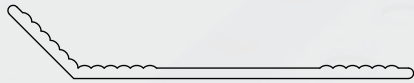
It is used in wall plaster applications.

Product storage conditions

All joints and detail profiles are painted to avoid surface sensitivity, and galvanized profiles to avoid contact with water and in order to obtain a flat surface, it must be kept in a way that it will not be subjected to impact.

Our aluminum white painted products are in Ral 9016 code. Optional special color production can be done.

JOINT GAP AND DETAIL PROFILES



DILATION PRESSURE BAR

Order Code	Product Type	Package Quantity
2920	Single Lugged	50 pcs x 3m

Product description:

It is used as a starting and ending profile in membrane applications. Prevents leakage when applied with membrane adhesive.

Area of Use

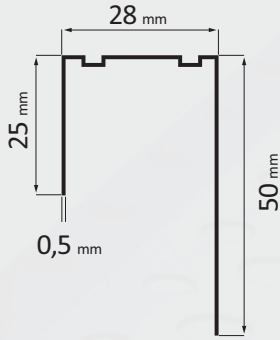
It is used for fixing the drainage plate in curtain insulation and membrane applications.

Product storage conditions

All joints and detail profiles are painted to avoid surface sensitivity, and galvanized profiles to avoid contact with water and in order to obtain a flat surface, it must be kept in a way that it will not be subjected to impact.

Our aluminum white painted products are in Ral 9016 code. Optional special color production can be done.

JOINT GAP AND DETAIL PROFILES



GALVANIZED LAME U PROFILE

Order Code	Product Type	Package Quantity
1219	LAME U PROFILE	24 pcs x 3m

Product description:

It is the profile used in plasterboard ceiling applications.

Area of Use

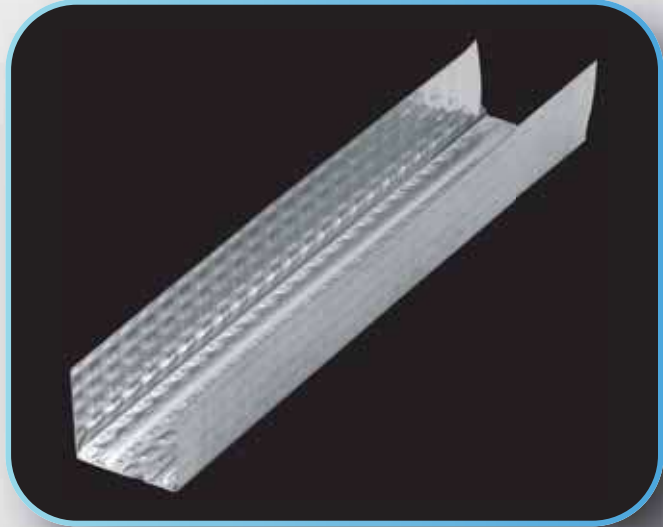
It is used for fixing the drainage plate in curtain insulation and membrane applications.

Product storage conditions

All joints and detail profiles are painted to avoid surface sensitivity, and galvanized profiles to avoid contact with water and in order to obtain a flat surface, it must be kept in a way that it will not be subjected to impact.

Our aluminum white painted products are in Ral 9016 code. Optional special color production can be done.

JOINT GAP AND DETAIL PROFILES



GALVANIZED CEILING U PROFILE

Order Code	Product Type	Package Quantity
1803	CEILING U PROFILE	24 pcs x 3m

Product description:

It is the profile used in plasterboard ceiling applications.

Area of Use

It is used in plasterboard and suspended ceiling systems.

Product storage conditions

All joints and detail profiles are painted to avoid surface sensitivity, and galvanized profiles to avoid contact with water and in order to obtain a flat surface, it must be kept in a way that it will not be subjected to impact.

Our aluminum white painted products are in Ral 9016 code. Optional special color production can be done.

JOINT GAP AND DETAIL PROFILES



GALVANIZED CEILING C PROFILE

Order Code	Product Type	Package Quantity
1804	CEILING C PROFILE	12 pcs x 3m

Product description:

It is the profile used in plasterboard ceiling applications.

Area of Use

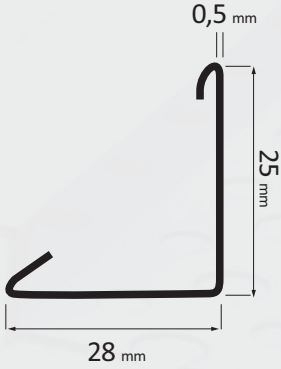
It is used in plasterboard and suspended ceiling systems.

Product storage conditions

All joints and detail profiles are painted to avoid surface sensitivity, and galvanized profiles to avoid contact with water and in order to obtain a flat surface, it must be kept in a way that it will not be subjected to impact.

Our aluminum white painted products are in Ral 9016 code. Optional special color production can be done.

JOINT GAP AND DETAIL PROFILES



GALVANIZED PAINTED T 24 L CORNER PROFILE

Order Code
1805

Product Type
T 24 L CORNER

Package Quantity
50 pcs x 3 m.

Product description:

It is the corner profile used in Modular Suspended ceiling systems.

Area of Use

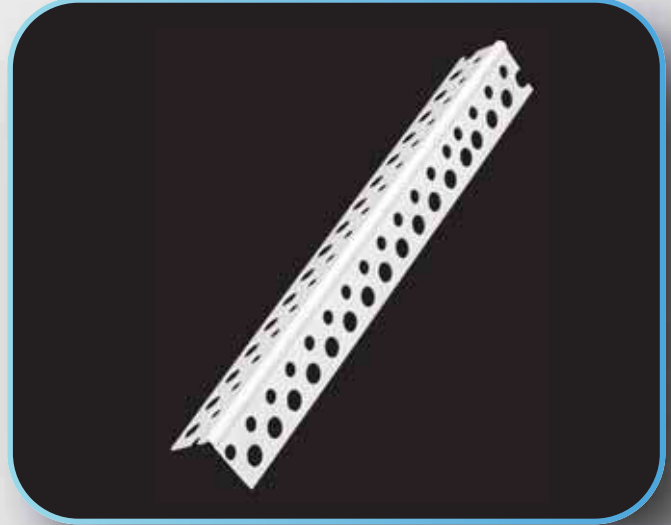
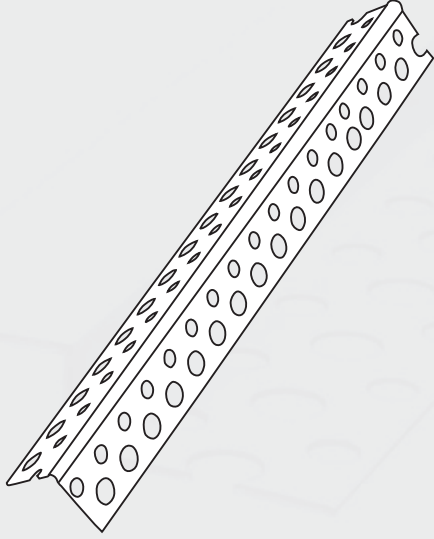
It is used in modular suspended ceiling systems.

Product storage conditions

All joints and detail profiles are painted to avoid surface sensitivity, and galvanized profiles to avoid contact with water and in order to obtain a flat surface, it must be kept in a way that it will not be subjected to impact.

Our aluminum white painted products are in Ral 9016 code. Optional special color production can be done.

JOINT GAP AND DETAIL PROFILES



PVC PERFORATED CORNER PROFILE

Order Code	Product Type	Package Quantity
1806	PVC PERFORATED CORNER	50 pcs x 3m

Product description:

Creating a smooth line at corner joints in plasterboard partition wall systems and increasing resistance to impacts. It does not corrode due to its raw material properties.

Area of Use

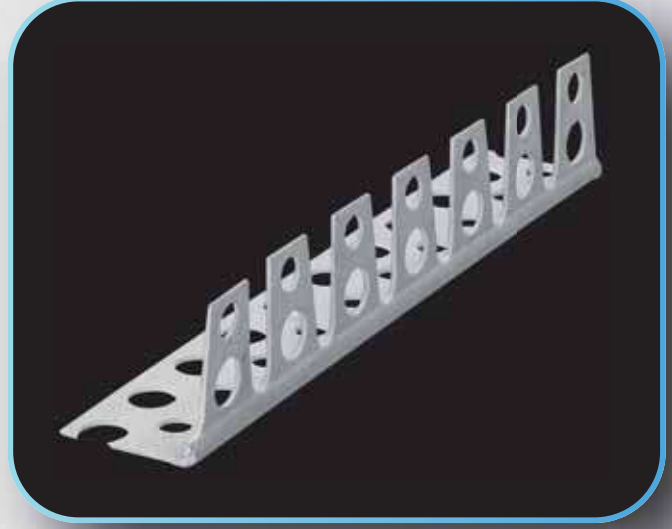
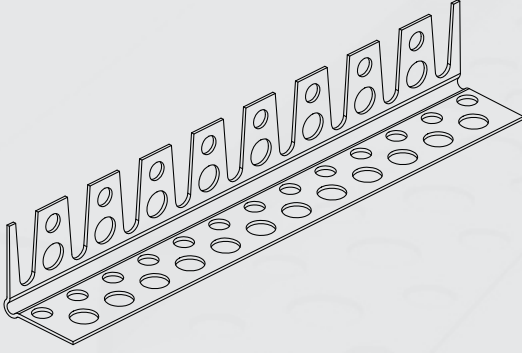
It is used in plasterboard and suspended ceiling, partition and wall joints.

Product storage conditions

All joints and detail profiles are painted to avoid surface sensitivity, and galvanized profiles to avoid contact with water and in order to obtain a flat surface, it must be kept in a way that it will not be subjected to impact.

Our aluminum white painted products are in Ral 9016 code. Optional special color production can be done.

JOINT GAP AND DETAIL PROFILES



PVC CUT CORNER PROFILE

Order Code	Product Type	Package Quantity
1164	PVC CUT CORNER	100 pcs x 2,5m

Product description:

It is the profile used to make curved corners resistant to impacts in suspended ceiling systems.

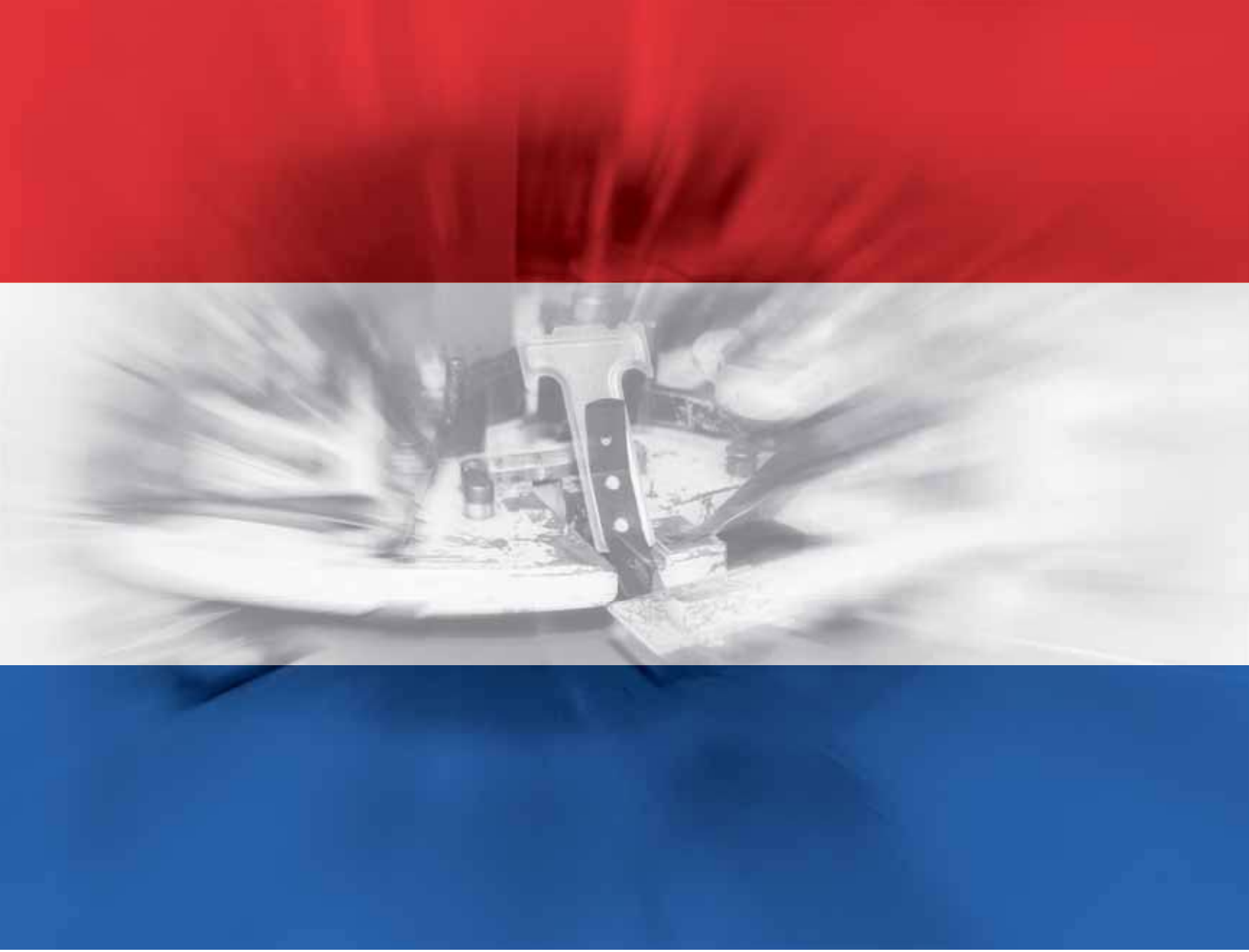
Area of Use

It is used in plasterboard, suspended ceiling and wall connection systems.

Product storage conditions

All joints and detail profiles are painted to avoid surface sensitivity, and galvanized profiles to avoid contact with water and in order to obtain a flat surface, it must be kept in a way that it will not be subjected to impact.

Our aluminum white painted products are in Ral 9016 code. Optional special color production can be done.



PROAKS METAL

Proaks Metal Yapı Sistemleri San. Tic. Ltd. Şti.

Beylikdüzü, Birlik Sanayi Sitesi 5. Cadde No:29 PK: 34524 İstanbul TÜRKİYE

Tel: 0090 212 541 0924
info@proaksmetal.com.tr

Faks: 0090 212 426 7803
www.proaksmetal.com.tr

