



**EXTREME
DUTY**

**Engineered durability,
extreme duty 4x4 performance.**



Application: GMP12200-XPB, GMP12200-XCB

Fitting Instructions for Isuzu MU-X 2013 On

1. Remove tail pipe and muffler assembly from vehicle.
2. Remove intermediate pipe from the vehicle.
3. Remove RHF wheel.
4. Lock the steering wheel in the straight ahead position.
5. Remove the steering shaft joiner as shown in Figure 1.



Figure 1.

6. Remove the engine pipe from the vehicle.
7. Refit the steering shaft joiner as shown in figure 1, and tension bolts to factory specifications.
8. Remove the lower portion of the cat support bracket from the engine Refer Figure2

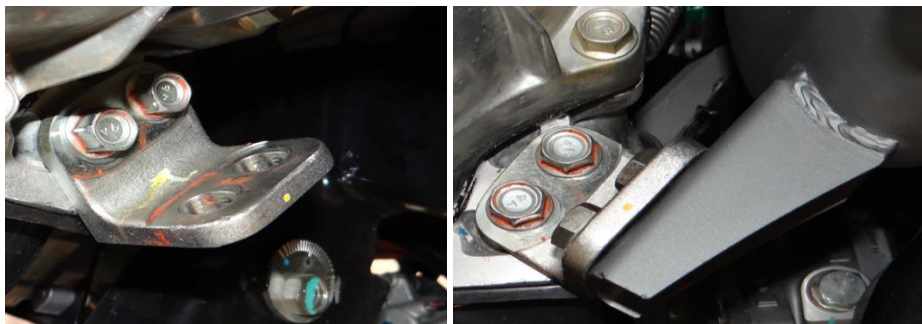


Figure 2.

9. Remove the exhaust rubber hangers from the vehicle.

ProMan

A ROCK SOLID REPUTATION

70-84 Miller Street, Epping, Victoria 3076
Phone (+61 3) 8401 8500 Facsimile (+61 3) 9401 4869

Issue Date September 2017



redbackexhausts.com.au



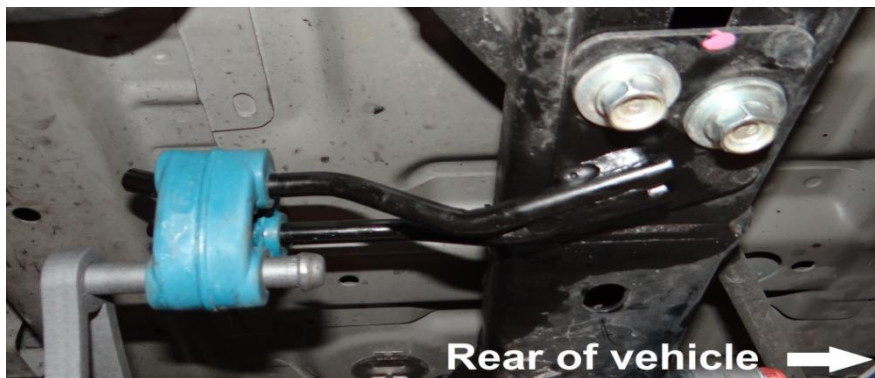
**EXTREME
DUTY**

**Engineered durability,
extreme duty 4x4 performance.**



Application: GMP12200-XPB, GMP12200-XCB

10. Remove the muffler support hanger from the vehicle cross member forward of the muffler and rotate 180 degrees and refit using the standard bolts. Refer Figure 3.



11. Fit replacement exhaust rubber hangers to the vehicle.
12. Fit engine pipe to turbocharger outlet with the standard nuts bolts and gasket.
13. Fit two M12x1.75x30mm bolts, four M12 flat washers, two spring washers and M12x1.75 nuts to the engine pipe support bracket. Refer Figure 2.
14. Fit exhaust temp and O² sensor plugs to the engine pipe.
15. Fit first intermediate pipe to engine pipe with four M8x1.25x35mm bolts and eight M8 flat washers, tighten M8x1.25 lock nuts tighten finger tight.
16. Fit second intermediate pipe to first intermediate pipe with four M8x1.25x35mm bolts and eight M8 flat washers, tighten M8x1.25 lock nuts tighten finger tight.
17. Fit muffler to second intermediate pipe using four M8x1.25x35mm bolts, eight M8 flat washers, tighten M8x1.25 lock nuts tighten finger tight.
18. Fit tail pipe to muffler using four M8x1.25x35mm bolts, eight M8 flat washers, tighten M8x1.25 lock nuts tighten finger tight.
19. Tighten all bolts and nuts from front to back of vehicle ensuring all flanges are lined up with each other and test for leaks.

NOTE: WE RECOMMEND FITTING THIS PRODUCT EITHER ON A 4 POST HOIST OR ON THE GROUND

ProMan

A ROCK SOLID REPUTATION

70-84 Miller Street, Epping, Victoria 3076
Phone (+61 3) 8401 8500 Facsimile (+61 3) 9401 4869



redbackexhausts.com.au

Issue Date September 2017