



**EXTREME
DUTY**

**Engineered durability,
extreme duty 4x4 performance.**

Application: NIP50200-XPB

Fitting Instructions for Nissan Patrol Ute and Wagon TD42-T

1. Remove rear tail pipe from vehicle.
2. Remove intermediate pipe from vehicle.
3. Remove engine pipe from vehicle.
4. Remove standard exhaust mount bracket from under left hand gearbox mount.
5. Remove rubber isolators from standard exhaust mount bracket.
6. Install standard rubber isolators in the new gold gearbox mount bracket.
7. Install the new gearbox mount bracket under the left hand gearbox mount, refit standard bolts finger tight. Refer Figure 1.



Figure 1.

8. Install the new rubber isolator to the new muffler mount bracket using two M6x1.0 flange nuts, tighten finger tight. Refer Figure 2.
9. Install the new muffler flange bracket to the previously fitted rubber isolator using two M6x1.0 flange nuts, tighten finger tight. Refer Figure 2.



Figure 2.

ProMan

A ROCK SOLID REPUTATION

70-84 Miller Street, Epping, Victoria 3076
Phone (+61 3) 8401 8500 Facsimile (+61 3) 9401 4869

Issue Date September 2017



redbackexhausts.com.au



**EXTREME
DUTY**

**Engineered durability,
extreme duty 4x4 performance.**

Application: NIP50200-XPB

10. Install the new muffler mount bracket and muffler flange bracket previously assembled to the two standard captive nuts in the chassis rail positioned rearward of the front tubular cross member, with two M8x1.25x20mm flange bolts and tighten. Refer Figure 3.

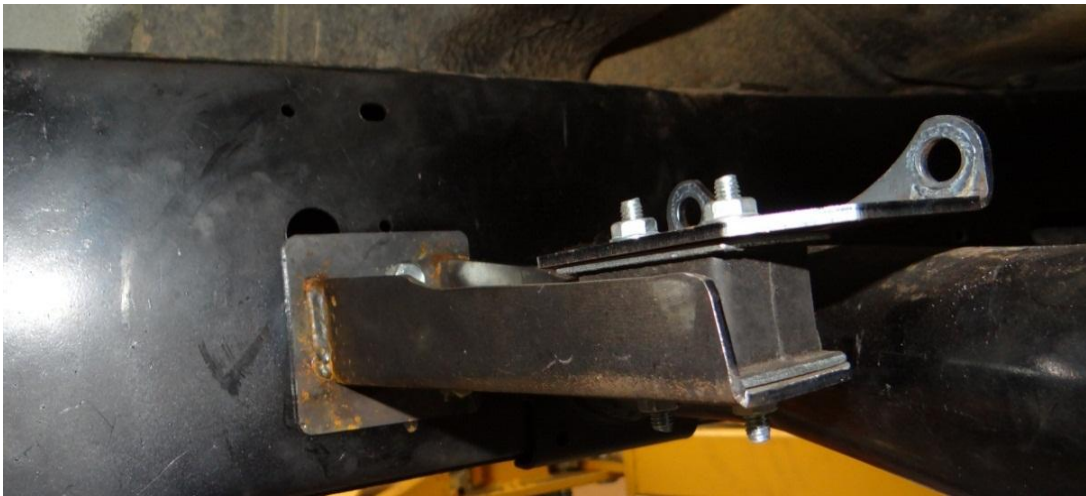


Figure 3

11. Install the new intermediate rear bracket to the standard captive nuts in the rear of the existing exhaust mount using two M8x1.25.20mm flange bolts and fit exhaust rubber hanger using two M6x1.0 flange nuts, tighten finger tight. Refer Figure 4.



Figure 4.

ProMan

A ROCK SOLID REPUTATION

70-84 Miller Street, Epping, Victoria 3076
Phone (+61 3) 8401 8500 Facsimile (+61 3) 9401 4869

Issue Date September 2017



redbackexhausts.com.au



**EXTREME
DUTY**

**Engineered durability,
extreme duty 4x4 performance.**

Application: NIP50200-XPB

12. Fit new tail pipe bracket to the underside of the standard rear exhaust hanger bracket and align the half circle cut out with the factory hanger hole and secure with vice grips. Refer Figure 5.

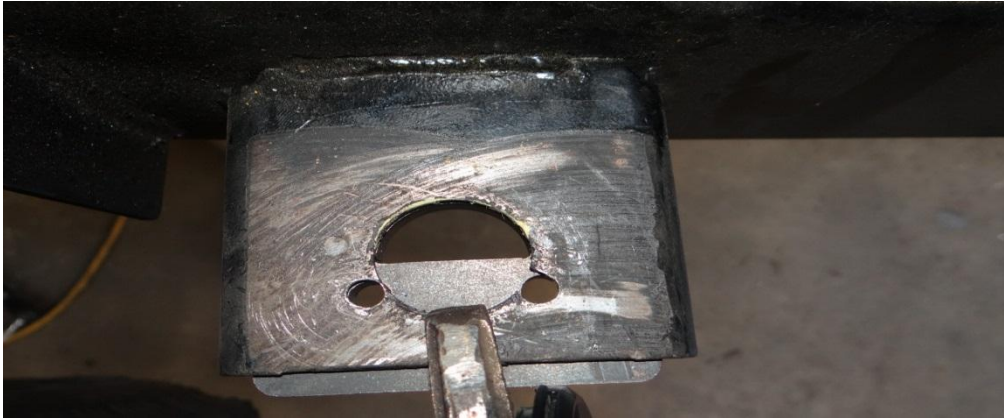


Figure 5

13. Drill two new holes in the standard vehicle hanger bracket using the new tail pipe bracket as a template with a 7mm drill bit and fit a new rubber hanger, using M6x1.0 flange nuts, tighten finger tight. Refer Figure 6



Figure 6

14. Remove the front sway bar from the vehicle to assist with the installation of the new engine pipe.
15. Fit engine pipe to turbocharger outlet with supplied three M10x16mm O.D flat washers and three M10x1.25 lock nuts tighten finger tight.
16. Fit exhaust temp and o² sensor plugs to engine pipe.
17. Fit first intermediate pipe to engine pipe with four M8x1.25x35mm bolts and eight M8 flat washers, Tighten M8x1.25 lock nuts finger tight.
18. Fit two M8x1.25x35mm bolts with two M8x25mm O/D washers to the previously fitted gearbox mount bracket rubber isolators, Tighten M8x1.25 lock nuts finger tight.

ProMan

A ROCK SOLID REPUTATION

70-84 Miller Street, Epping, Victoria 3076
Phone (+61 3) 8401 8500 Facsimile (+61 3) 9401 4869

Issue Date September 2017



redbackexhausts.com.au



**EXTREME
DUTY**

**Engineered durability,
extreme duty 4x4 performance.**

Application: NIP50200-XPB

19. Fit muffler to intermediate pipe using only the top flange holes with M8x1.25x35mm bolts, four M8 flat washers and M8x1.25 lock nuts
20. Fit two M8x1.25x40mm bolts, four M8 flat washers and two M8x1.25 lock nuts to the lower flange holes and the muffler flange bracket, tighten finger tight
21. Fit second intermediate pipe to muffler with four M8x1.25x35mm bolts, eight M8 flat washers and four M8x1.25 lock nuts, tighten finger tight.
22. Fit tail pipe to second intermediate pipe with M8x1.25x35mm bolts, eight M8 washers and M8x1.25 lock nuts, tighten finger tight fit tail pipe support bracket to the vehicle as shown in Figure 7.



Figure 7.

23. Test fit both small and large intermediate pipe support brackets under the gearbox mount to determine correct size. Refer Figure 8.
24. Fit correct intermediate pipe support bracket to intermediate pipe. Refer Figure 8.



Figure 8.

25. Fit two M8x1.25x35mm bolts with two M8x25mm O/D washers to the gearbox mount bracket rubber isolators, Tighten M8x1.25 lock nuts finger tight.
26. Tighten all bolts and nuts from front to back of vehicle and test for leaks.

NOTE: WE RECOMMEND FITTING THIS PRODUCT EITHER ON A FOUR POST HOIST OR ON THE GROUND

ProMan

A ROCK SOLID REPUTATION

70-84 Miller Street, Epping, Victoria 3076
Phone (+61 3) 8401 8500 Facsimile (+61 3) 9401 4869



redbackexhausts.com.au

Issue Date September 2017