



**EXTREME
DUTY**

**Engineered durability,
extreme duty 4x4 performance.**



Application: TYP42200-XPB, TYP42200-XCB
Fitting Instructions for Toyota Hilux 25 Series 2005 onwards

1. Remove the tail pipe/muffler from vehicle.
2. Remove intermediate pipe from vehicle.
3. Remove engine pipe from vehicle.
4. Remove turbo outlet pipe from vehicle.
5. Fit replacement rubber exhaust hangers.
6. Fit o² and exhaust temp sensor plugs to engine pipe.
7. Fit engine pipe to the turbo charger with three M8 washers, three M8x1.25 nuts and tighten finger tight.
8. Fit the engine pipe support bracket to the engine pipe and the bellhousing using one M8x1.25x16mm bolt and tighten finger tight. Refer Figure 1.

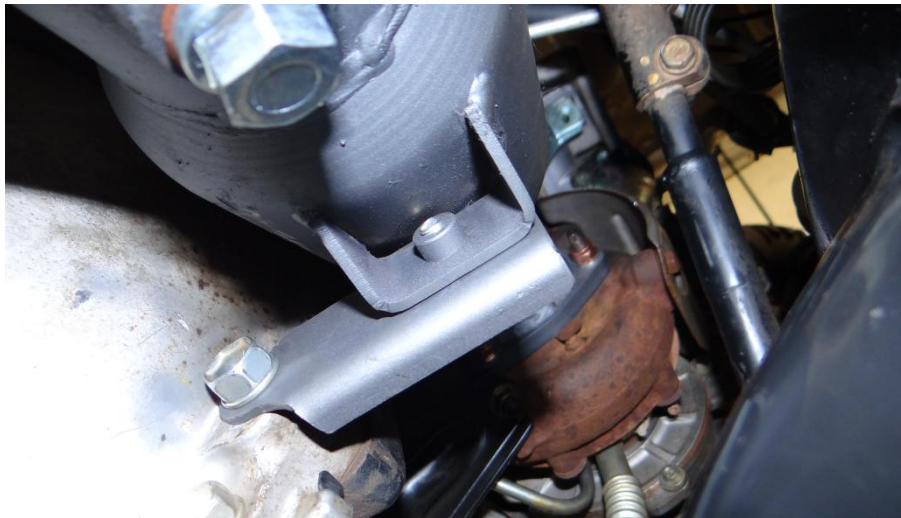


Figure 1.

9. Fit front intermediate pipe to engine pipe with four M8x1.25x35mm bolts, eight M8 washers and tighten M8x1.25 lock nuts finger tight.
10. Fit muffler/muffler replacement to the front intermediate pipe with four M8x1.25x35mm bolts, eight M8 flat washers and tighten M8x1.25 lock nuts finger tight.
11. Fit rear intermediate pipe to vehicle with four M8x1.25x35mm bolts, eight M8 flat washers and tighten M8x1.25 lock nuts finger tight.
12. Fit tail pipe to vehicle with four M8x1.25x35mm bolts, eight M8 flat washers and tighten M8x1.25 lock nuts finger tight.
13. Tighten all bolts and nuts from front to back of the vehicle and test for leaks.

ProMan

A ROCK SOLID REPUTATION

70-84 Miller Street, Epping, Victoria 3076
Phone (+61 3) 8401 8500 Facsimile (+61 3) 9401 4869



redbackexhausts.com.au

Issue Date Oct 2017