



**EXTREME
DUTY**

**Engineered durability,
extreme duty 4x4 performance.**



Application: TYP46600-XPB, TYP46600-XCB

Fitting Instructions for Toyota Landcruiser 79 series twin system

1. Remove tail pipe and muffler assembly from vehicle.
2. Remove intermediate pipe from vehicle
3. Remove engine pipe from vehicle
4. Remove all three studs from the turbo
5. Remove all standard rubber exhaust hangers.
6. Fit turbo adaptor flange and turbo gasket to turbo using two M10x1.25x20mm cap screws and two M10x1.25x29mm long studs and tighten as shown in figure 1.



Figure 1.

7. Remove Fuel cooler and mounting brackets from the chassis rail as shown in Figure 2.
8. Remove steel fuel lines as shown in Figure 2.

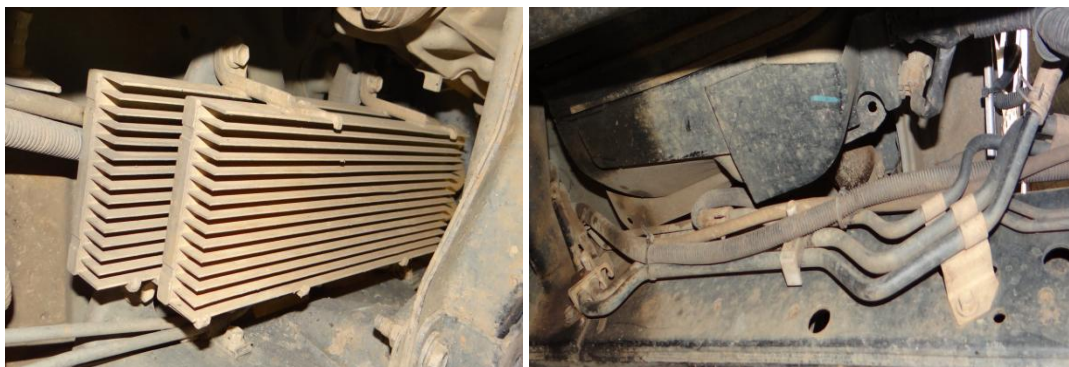


Figure 2.

9. Fit new fuel cooler bracket to chassis rail using three M8x1.25x20mm long bolts and tighten. Refer Figure 3.

ProMan

A ROCK SOLID REPUTATION

70-84 Miller Street, Epping, Victoria 3076
Phone **(+61 3) 8401 8500** Facsimile **(+61 3) 9401 4869**

Issue Date September 2017



redbackexhausts.com.au



**EXTREME
DUTY**

Engineered durability,
extreme duty 4x4 performance.



Application: TYP46600-XPB, TYP46600-XCB



Figure 3.

10. Fit fuel cooler to fuel cooler bracket using five M8x1.25x20mm long bolts and tighten. Refer Figure 4.

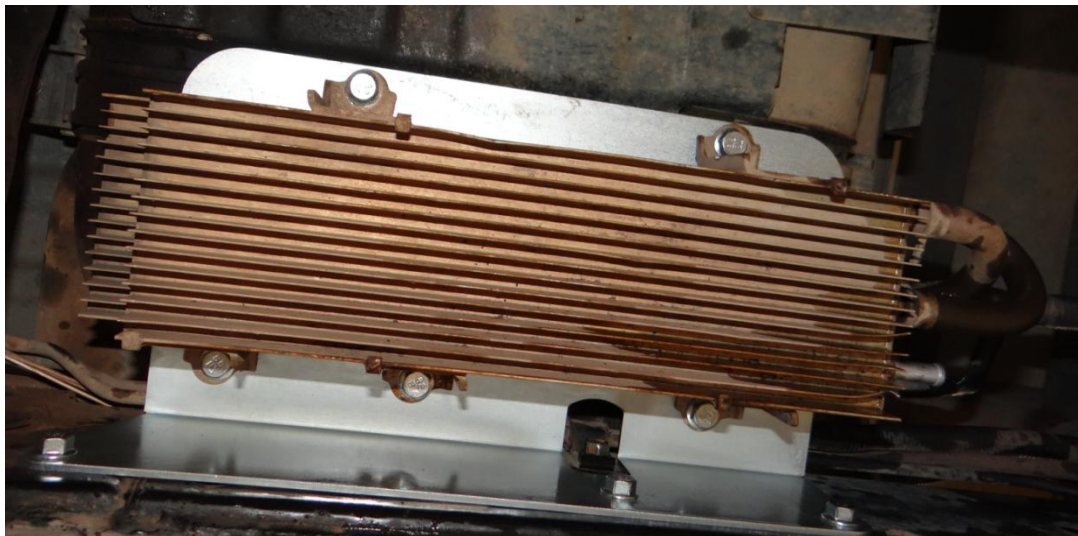


Figure 4.

11. Fit new 9.5mm I/D fuel line to the upper cooler outlet and the fuel tank control solenoid. Refer Figure 5.

ProMan

A ROCK SOLID REPUTATION

70-84 Miller Street, Epping, Victoria 3076
Phone (+61 3) 8401 8500 Facsimile (+61 3) 9401 4869

Issue Date September 2017



redbackexhausts.com.au



**EXTREME
DUTY**

**Engineered durability,
extreme duty 4x4 performance.**



Application: TYP46600-XPB, TYP46600-XCB

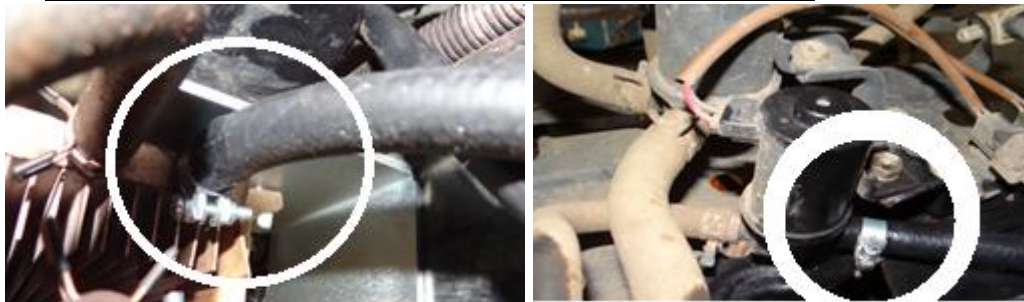


Figure 5.

12. Fit new 9.5mm I/D fuel line to the lower fuel cooler outlet and the fuel supply line
Refer Figure 6.

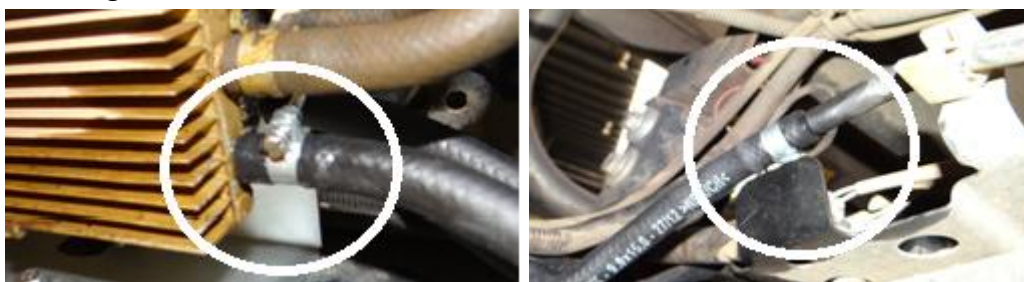


Figure 6.

13. Fit the new 7.5mm I/D breather line to the steel fuel filler breather and the steel breather hose. Refer Figure 7.



Figure 7.

14. Secure newly fitted rubber fuel and breather hoses to the brake line with the supplied cable ties. Refer figure 8.

ProMan

A ROCK SOLID REPUTATION

70-84 Miller Street, Epping, Victoria 3076
Phone (+61 3) 8401 8500 Facsimile (+61 3) 9401 4869

Issue Date September 2017



redbackexhausts.com.au



**EXTREME
DUTY**

**Engineered durability,
extreme duty 4x4 performance.**



Application: TYP46600-XPB, TYP46600-XCB

15. Relocate wiring and connectors attached to the fuel tank guard and secure on the inner side of the chassis rail. Refer Figure 8.

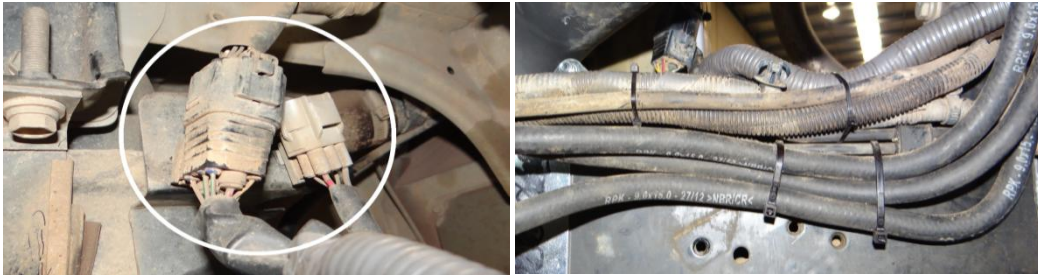


Figure 8.

16. Fit M8x1.25x20mm long bolt with M8x25mm O/D washer to the outer corner of the fuel tank and fit 52mm washer and M8x1.25 nut with the flat edge facing outwards. Refer figure 9.



Figure 9.

17. Fit right hand side tail pipe support bracket to the two towbar mount holes. If vehicle is not fitted with a tow bar fit the supplied spacer between the bracket and the chassis rail. Refer figure 10.



Figure 10.

18. Remove rear brake line and T block from the diff housing and the proportioning valve. Refer figure 11.

ProMan

A ROCK SOLID REPUTATION

70-84 Miller Street, Epping, Victoria 3076
Phone (+61 3) 8401 8500 Facsimile (+61 3) 9401 4869

Issue Date September 2017



redbackexhausts.com.au



**EXTREME
DUTY**

**Engineered durability,
extreme duty 4x4 performance.**



Application: TYP46600-XPB, TYP46600-XCB



Figure 11.

19. Fit the supplied brake line T block and mounting bracket to the diff housing and the rear steel brake lines using one M8x1.25x35mm bolt two M8 flat washers and one M8x1.25 locknut and the standard bolt in the diff housing. Refer Figure 12.



Figure 12.

20. Fit the supplied replacement brake line to the proportioning valve and the previously fitted T block and tighten to manufactures specifications. Refer figure 13.

ProMan

A ROCK SOLID REPUTATION

70-84 Miller Street, Epping, Victoria 3076
Phone **(+61 3) 8401 8500** Facsimile **(+61 3) 9401 4869**

Issue Date September 2017



redbackexhausts.com.au



**EXTREME
DUTY**

**Engineered durability,
extreme duty 4x4 performance.**



Application: TYP46600-XPB, TYP46600-XCB



Figure 13.

21. Reposition diff breather mounting bracket. Refer figure 14.



Figure 14.

22. Fit all new exhaust rubber hangers to the vehicle.
23. Remove the load sensing bracket from the diff, fit the supplied extended load sensing bracket using the standard nuts bolts and washers and one M8x1.25x35mm bolt
Refer Figure 15.



Figure 15.

24. Fit the twin engine pipe to turbo outlet using three M10x16mm O/D washers, two M10x1.25 nuts and one M10x1.25x45mm bolt and tighten finger tight.

ProMan

A ROCK SOLID REPUTATION

70-84 Miller Street, Epping, Victoria 3076
Phone (+61 3) 8401 8500 Facsimile (+61 3) 9401 4869

Issue Date September 2017



redbackexhausts.com.au



**EXTREME
DUTY**

**Engineered durability,
extreme duty 4x4 performance.**



Application: TYP46600-XPB, TYP46600-XCB

Refer Figure 16.



Figure 16.

25. Fit exhaust temp and O² sensor plugs to the engine pipe.
26. Fit left hand side first intermediate pipe to engine pipe using four M8x1.25x35mm bolts, four M8x1.25 lock nuts and eight M8 flat washers and tighten finger tight.

Refer Figure 17.



Figure 17.

27. Fit the left hand side second intermediate pipe using four M8x1.25x35mm bolts, four M8x1.25 lock nuts and eight M8 flat washers and tighten finger tight. Refer Figure 18.



Figure 18.

28. Fit twin resonator/pipe assembly to second intermediate pipe using four M8x1.25x35mm bolts, four M8x1.25 lock nuts and eight M8 flat washers and tighten finger tight. Refer Figure 19.

ProMan

A ROCK SOLID REPUTATION

70-84 Miller Street, Epping, Victoria 3076
Phone (+61 3) 8401 8500 Facsimile (+61 3) 9401 4869

Issue Date September 2017



redbackexhausts.com.au



**EXTREME
DUTY**

**Engineered durability,
extreme duty 4x4 performance.**



Application: TYP46600-XPB, TYP46600-XCB



Figure 19.

29. Fit left hand intermediate tail pipe to the twin resonator/pipe using four M8x1.25x35mm bolts, four M8x1.25 lock nuts and eight M8 flat washers and tighten finger tight. Refer Figure 20.



Figure 20.

30. Fit left hand tail pipe to the left hand intermediate tail pipe using four M8x1.25x35mm bolts, four M8x1.25 lock nuts and eight M8 flat washers and tighten finger tight. Refer Figure 21.



Figure 21.

31. Fit the right hand first intermediate pipe to the engine pipe using four M8x1.25x35mm bolts, four M8x1.25 lock nuts and eight M8 flat washers and tighten finger tight. Refer Figure 22.

ProMan

A ROCK SOLID REPUTATION

70-84 Miller Street, Epping, Victoria 3076
Phone **(+61 3) 8401 8500** Facsimile **(+61 3) 9401 4869**

Issue Date September 2017



redbackexhausts.com.au



**EXTREME
DUTY**

**Engineered durability,
extreme duty 4x4 performance.**



Application: TYP46600-XPB, TYP46600-XCB



Figure 22.

32. Fit the right hand second intermediate pipe to the right hand first intermediate pipe using four M8x1.25x35mm bolts, four M8x1.25 lock nuts and eight M8 flat washers and tighten finger tight. Refer Figure 23.



Figure 23.

33. Fit the right hand third intermediate pipe to the right hand second intermediate pipe using four M8x1.25x35mm bolts, four M8x1.25 lock nuts and eight M8 flat washers and tighten finger tight. Refer Figure 24.



Figure 24.

34. Fit the right hand fourth intermediate pipe to the right hand third intermediate pipe using four M8x1.25x35mm bolts, four M8x1.25 lock nuts and eight M8 flat washers. Fit fourth intermediate pipe to the previously fitted twin resonator/pipe using two M8x1.25x35mm bolts, two M8x1.25x40mm bolts, eight flat washers and four

ProMan

A ROCK SOLID REPUTATION

70-84 Miller Street, Epping, Victoria 3076
Phone (+61 3) 8401 8500 Facsimile (+61 3) 9401 4869

Issue Date September 2017



redbackexhausts.com.au



**EXTREME
DUTY**

**Engineered durability,
extreme duty 4x4 performance.**



Application: TYP46600-XPB, TYP46600-XCB

M8x1.25 lock nuts and tighten finger tight. Refer figure 25.



Figure 25.

35. Fit the right hand intermediate tail pipe to the twin resonator/pipe using four M8x1.25x35mm bolts, four M8x1.25 lock nuts and eight M8 flat washers tighten finger tight. Refer Figure 26.



Figure 26.

36. Fit the tail pipe to the intermediate tail pipe using four M8x1.25x35mm bolts, four M8x1.25 lock nuts and eight M8 flat washers tighten finger tight. Refer Figure 27.

Note: right hand rear mud guard may need to be cut to allow for the new tail pipe.



Figure 27.

37. Fit the right hand third intermediate pipe support bracket to the chassis rail using one M8x1.25x20mm bolt, position bracket aligned with the bracket on the pipe. Refer Figure 28.

ProMan

A ROCK SOLID REPUTATION

70-84 Miller Street, Epping, Victoria 3076
Phone (+61 3) 8401 8500 Facsimile (+61 3) 9401 4869

Issue Date September 2017



redbackexhausts.com.au



**EXTREME
DUTY**

**Engineered durability,
extreme duty 4x4 performance.**



Application: TYP46600-XPB, TYP46600-XCB



Figure 28.

38. Fit the rubber exhaust hanger to the previously fitted bracket.
39. Inspect all wiring and fuel lines have sufficient clearance from the exhaust pipe.
40. Tighten all nuts and bolts from the front of the vehicle to the back ensuring all flanges are aligned with each other and test for leaks.
41. Bleed brakes as per factory specifications.

NOTE: WE RECOMMEND FITTING THIS PRODUCT EITHER ON A 4 POST HOIST OR ON THE GROUND

ProMan

A ROCK SOLID REPUTATION

70-84 Miller Street, Epping, Victoria 3076
Phone (+61 3) 8401 8500 Facsimile (+61 3) 9401 4869

Issue Date September 2017



redbackexhausts.com.au