



**EXTREME
DUTY**

Engineered durability,
extreme duty 4x4 performance.



Application: TYP47500-XPB, TYP47500-XCB

Fitting Instructions for Toyota Landcruiser 79 series twin system

1. Remove tail pipe and muffler assembly from vehicle.
2. Remove intermediate pipe from vehicle.
3. Remove engine pipe from vehicle.
4. Remove all three studs from the turbo.
5. Remove all standard rubber exhaust hangers.
6. Fit supplied replacement rubber exhaust hangers.
7. Fit turbo adaptor flange and turbo gasket to turbo using two M10x1.25x20mm cap screws and two M10x1.25x29mm long studs and tighten as shown in Figure 1.



Figure 1.

8. Fit right hand side tail pipe support bracket to the two towbar mount holes. If vehicle is not fitted with a tow bar fit the supplied spacer between the bracket and the chassis rail. Refer Figure 2.



Figure 2.

9. Remove rear brake line and T block from the diff housing and the proportioning valve. Refer figure 3.

ProMan

A ROCK SOLID REPUTATION

70-84 Miller Street, Epping, Victoria 3076
Phone (+61 3) 8401 8500 Facsimile (+61 3) 9401 4869

Issue Date September 2017



redbackexhausts.com.au

Application: TYP47500-XPB, TYP47500-XCB



Figure 3.

10. Fit the supplied brake line T block and mounting bracket to the diff housing and the rear steel brake lines using one M8x1.25x35mm bolt two M8 flat washers and one M8x1.25 locknut and the standard bolt in the diff housing. Refer Figure 4.



Figure 4.

11. Fit the supplied replacement brake line and tighten to manufactures specifications. Refer Figure 5.



**EXTREME
DUTY**

Engineered durability,
extreme duty 4x4 performance.



Application: TYP47500-XPB, TYP47500-XCB



Figure 5.

12. Remove the large grey connector from its standard mounting position and secure it to the wiring loom above using the supplied cable ties. Connector shown in figure 6.

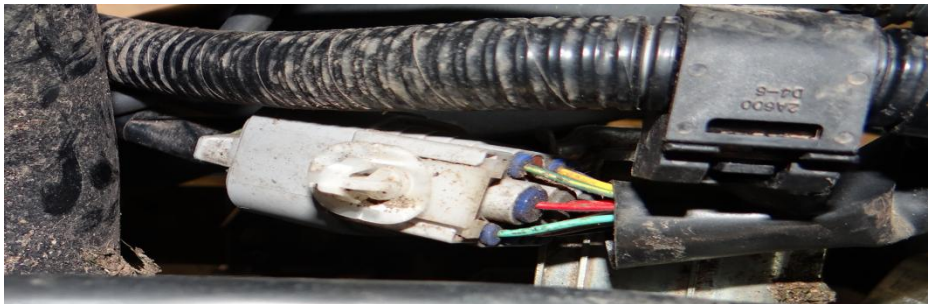


Figure 6.

13. Remove wiring bracket located forward of the fuel tank on the driver's side of the vehicle shown in Figure 7 and secure the wiring with the cable ties supplied.



Figure 7.

14. Remove the most rearward fuel line securing bracket bolt and fit the supplied fuel line relocation bracket to the chassis rail and the fuel line securing bracket using two M8x1.25x20mm bolts. Refer Figure 8.

ProMan

A ROCK SOLID REPUTATION

70-84 Miller Street, Epping, Victoria 3076
Phone (+61 3) 8401 8500 Facsimile (+61 3) 9401 4869

Issue Date September 2017



redbackexhausts.com.au



**EXTREME
DUTY**

Engineered durability,
extreme duty 4x4 performance.



Application: TYP47500-XPB, TYP47500-XCB



Figure 8.

15. Relocate the wheel speed sensor and diff lock wiring and connectors and secure with supplied cable ties. As shown in Figure 9.



Figure 9.

16. Remove the load sensing bracket from the differential and fit the supplied extended load sensing bracket using the standard nuts bolts and washers and one M8x1.25x35mm bolt Refer Figure 10.

ProMan

A ROCK SOLID REPUTATION

70-84 Miller Street, Epping, Victoria 3076
Phone (+61 3) 8401 8500 Facsimile (+61 3) 9401 4869

Issue Date September 2017



redbackexhausts.com.au



**EXTREME
DUTY**

Engineered durability,
extreme duty 4x4 performance.



Application: TYP47500-XPB, TYP47500-XCB



Figure 10.

17. Fit supplied engine pipe support bracket to the bell housing of the gearbox using the standard bolts and tighten finger tight . Refer Figure 11.



Figure 11.

18. Fit the twin engine pipe to turbo outlet using four M10x16mm O/D washers, two M10x1.25 nuts, one M10x1.25x45mm bolt and one M10x1.25x20mm bolt and tighten finger tight. Refer Figure 12.

ProMan

A ROCK SOLID REPUTATION

70-84 Miller Street, Epping, Victoria 3076
Phone (+61 3) 8401 8500 Facsimile (+61 3) 9401 4869

Issue Date September 2017



redbackexhausts.com.au



**EXTREME
DUTY**

Engineered durability,
extreme duty 4x4 performance.



Application: TYP47500-XPB, TYP47500-XCB



Figure 12.

19. Fit exhaust temp and O² sensor plugs to the engine pipe.
20. Fit both front intermediate pipes to the engine pipe using the outside four bolt holes with four M8x1.25x35mm bolts, four M8x1.25 lock nuts and eight M8 flat washers and tighten finger tight. Refer Figure 13.



Figure 13.

21. Fit the supplied pipe support bracket to the inner side of the first intermediate flanges using two M8x1.25x45mm bolts and two 4mm spacers fitted to the passenger side flange and two M8x1.25x40mm bolts, four M8x1.25 lock nuts and eight M8 flat washers and tighten finger tight. Refer figure 14.

ProMan

A ROCK SOLID REPUTATION

70-84 Miller Street, Epping, Victoria 3076
Phone (+61 3) 8401 8500 Facsimile (+61 3) 9401 4869

Issue Date September 2017



redbackexhausts.com.au



**EXTREME
DUTY**

Engineered durability,
extreme duty 4x4 performance.



Application: TYP47500-XPB, TYP47500-XCB

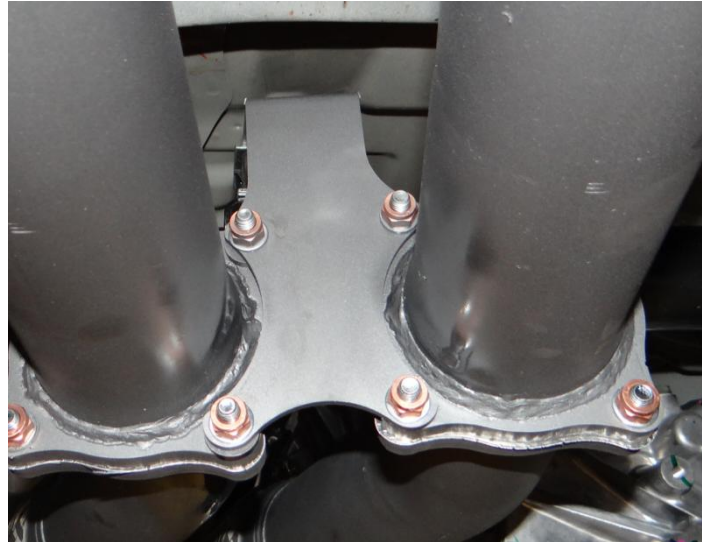


Figure 14.

22. Fit twin resonator/pipe assembly to first intermediate pipes using six M8x1.25x35mm bolts, six M8x1.25 lock nuts and twelve M8 flat washers and tighten finger tight.

Refer Figure 15.



Figure 15.

23. Fit supplied muffler support bracket to the exhaust hanger and the flange using two M8x1.25x40mm bolts two M8x1.25 lock nuts and four M8 flat washers and tighten

ProMan

A ROCK SOLID REPUTATION

70-84 Miller Street, Epping, Victoria 3076
Phone (+61 3) 8401 8500 Facsimile (+61 3) 9401 4869

Issue Date September 2017



redbackexhausts.com.au



**EXTREME
DUTY**

Engineered durability,
extreme duty 4x4 performance.



Application: TYP47500-XPB, TYP47500-XCB

finger tight. Refer Figure 16.

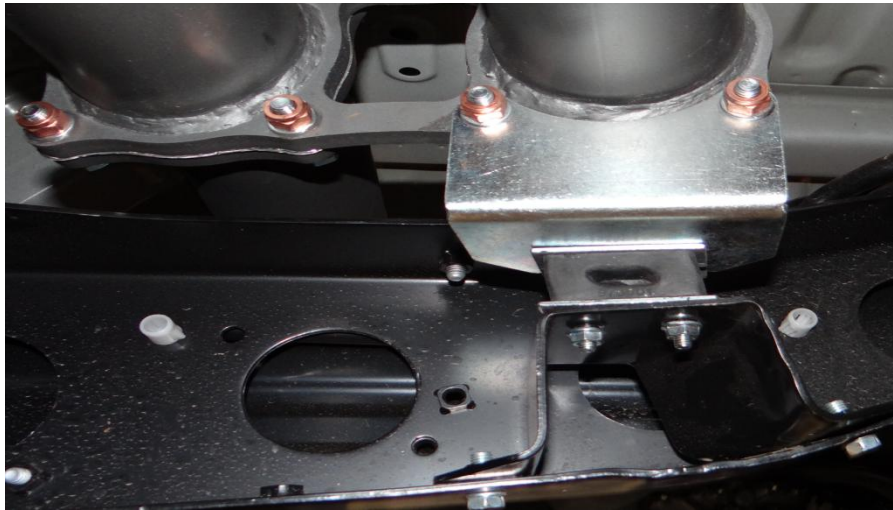


Figure 16.

24. Fit passenger side intermediate tail pipe to the twin resonator/pipe using four M8x1.25x35mm bolts, four M8x1.25 lock nuts and eight M8 flat washers and tighten finger tight. Refer Figure 17.



Figure 17.

25. Fit passenger side tail pipe to the passenger side intermediate tail pipe using four M8x1.25x35mm bolts, four M8x1.25 lock nuts and eight M8 flat washers and tighten finger tight. Refer Figure 18.

ProMan

A ROCK SOLID REPUTATION

70-84 Miller Street, Epping, Victoria 3076
Phone (+61 3) 8401 8500 Facsimile (+61 3) 9401 4869

Issue Date September 2017



redbackexhausts.com.au

Application: TYP47500-XPB, TYP47500-XCB



Figure 18.

26. Fit the driver's side intermediate tail pipe to the twin resonator/pipe using four M8x1.25x35mm bolts, four M8x1.25 lock nuts and eight M8 flat washers tighten finger tight. Refer Figure 19.



Figure 19.

27. Fit the driver's side tail pipe to the driver's side intermediate tail pipe using four M8x1.25x35mm bolts, four M8x1.25 lock nuts and eight M8 flat washers tighten finger tight. Refer Figure 20. **Note: driver's side rear mud guard may need to be cut to allow for the new tail pipe.**



**EXTREME
DUTY**

Engineered durability,
extreme duty 4x4 performance.



Application: TYP47500-XPB, TYP47500-XCB



Figure 20.

28. Fit the rubber exhaust hanger to the previously fitted bracket.
29. Inspect all wiring and fuel lines have sufficient clearance from the exhaust pipe.
30. Tighten all nuts and bolts from the front of the vehicle to the back ensuring all flanges are aligned with each other and test for leaks.
31. Bleed brakes as per factory specifications.

NOTE: WE RECOMMEND FITTING THIS PRODUCT EITHER ON A 4 POST HOIST OR ON THE GROUND

ProMan

A ROCK SOLID REPUTATION

70-84 Miller Street, Epping, Victoria 3076
Phone (+61 3) 8401 8500 Facsimile (+61 3) 9401 4869

Issue Date September 2017



redbackexhausts.com.au