



**EXTREME
DUTY**

Engineered durability,
extreme duty 4x4 performance.



Application: TYP47700-XPB, TYP47700-XCB

Fitting Instructions for Toyota Landcruiser 76 series twin system

1. Remove tail pipe and muffler assembly from vehicle.
2. Remove intermediate pipe from vehicle.
3. Remove engine pipe from vehicle.
4. Remove all three studs from the turbo.
5. Remove all standard rubber exhaust hangers.
6. Fit supplied replacement rubber exhaust hangers.
7. Fit turbo adaptor flange and turbo gasket to turbo using two M10x1.25x20mm cap screws and two M10x1.25x29mm long studs and tighten as shown in Figure 1.



Figure 1.

8. Fit the supplied engine pipe support bracket to the bell housing of the gearbox using the standard bolts and tighten finger tight. Refer Figure 2.



Figure 2.

9. Fit right hand side tail pipe support bracket and the securing bracket over the chassis rail forward of the rear spring shackle and secure using one M8x1.25x25mm bolt, one

ProMan

A ROCK SOLID REPUTATION

70-84 Miller Street, Epping, Victoria 3076
Phone (+61 3) 8401 8500 Facsimile (+61 3) 9401 4869



redbackexhausts.com.au



**EXTREME
DUTY**

**Engineered durability,
extreme duty 4x4 performance.**



Application: TYP47700-XPB, TYP47700-XCB

M8 Flat washer and tighten finger tight. Refer Figure 3.



Figure 3.

10. Fit rear support bracket to the two captive nuts in the chassis rail positioned forward of the tubular rear cross member with two M8x1.25x20mm bolts finger tight. Refer Figure 4.

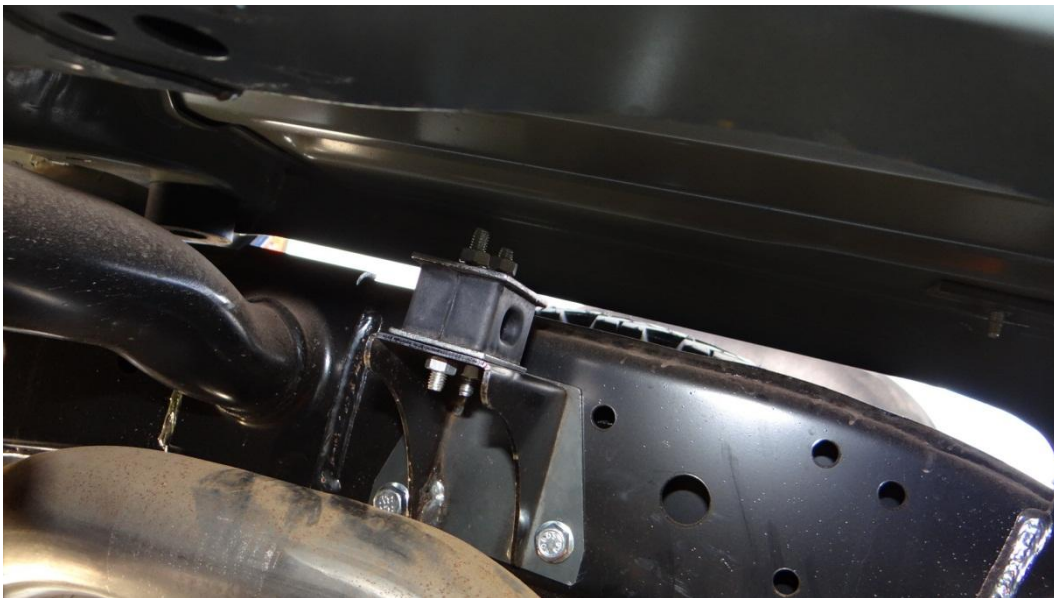


Figure 4.

ProMan

A ROCK SOLID REPUTATION

70-84 Miller Street, Epping, Victoria 3076
Phone (+61 3) 8401 8500 Facsimile (+61 3) 9401 4869



redbackexhausts.com.au

Application: TYP47700-XPB, TYP47700-XCB

11. Remove rear brake line from the diff and the proportioning valve. Refer figure 5.

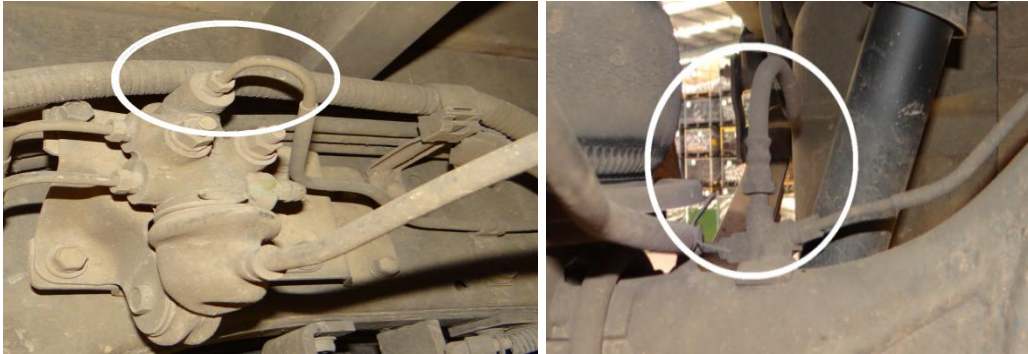


Figure 5.

12. Fit the supplied brake line T block and mounting bracket to the diff housing and the rear steel brake lines using one M8x1.25x35mm bolt two M8 flat washers and one M8x1.25 locknut and the standard bolt in the diff housing. Refer Figure 6.



Figure 6.

13. Fit the supplied replacement brake line to the proportioning valve and the previously fitted T block and tighten to manufactures specifications. Refer figure 7.



**EXTREME
DUTY**

Engineered durability,
extreme duty 4x4 performance.



Application: TYP47700-XPB, TYP47700-XCB



Figure 7.

14. Remove the most rearward fuel line securing bracket bolt and fit the supplied fuel line relocation bracket to the chassis rail and the fuel line securing bracket using two M8x1.25x20mm bolts. Refer Figure 8. **Note: If the vehicle is built before 2012 disregard this step.**



Figure 8.

15. Relocate the wheel speed sensor and diff lock wiring and connectors and secure with supplied cable ties. As shown in Figure 9. **Note: If the vehicle is built before 2012 disregard this step.**

ProMan

A ROCK SOLID REPUTATION

70-84 Miller Street, Epping, Victoria 3076
Phone (+61 3) 8401 8500 Facsimile (+61 3) 9401 4869



redbackexhausts.com.au



**EXTREME
DUTY**

Engineered durability,
extreme duty 4x4 performance.



Application: TYP47700-XPB, TYP47700-XCB



Figure 9.

16. Remove the load sensing bracket from the diff and fit the supplied extended load sensing bracket using the standard nuts bolts and washers and one M8x1.25x35mm bolt Refer Figure 10.



Figure 10.

17. Fit the twin engine pipe to turbo outlet using three M10x16mm O/D washers, two M10x1.25 nuts, one M10x1.25x45mm bolt and tighten finger tight. Refer Figure 11.

ProMan

A ROCK SOLID REPUTATION

70-84 Miller Street, Epping, Victoria 3076
Phone (+61 3) 8401 8500 Facsimile (+61 3) 9401 4869



redbackexhausts.com.au



**EXTREME
DUTY**

Engineered durability,
extreme duty 4x4 performance.



Application: TYP47700-XPB, TYP47700-XCB



Figure 11.

18. Fit one M10x1.25x20mm bolt to the engine pipe support bracket and tighten finger tight.
19. Fit exhaust temp and O² sensor plugs to the engine pipe.
20. Fit both front intermediate pipes to the engine pipe using the outside four bolt holes with four M8x1.25x35mm bolts, four M8x1.25 lock nuts and eight M8 flat washers and tighten finger tight. Refer Figure 12.

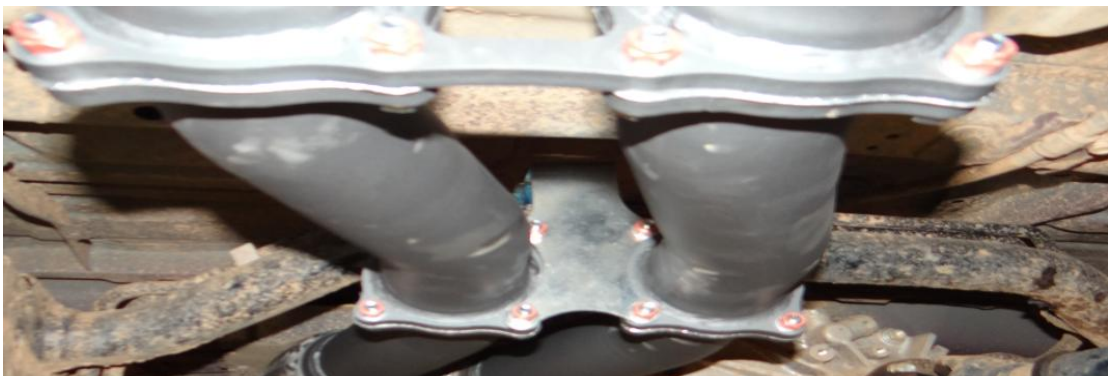


Figure 12.

21. Fit the supplied pipe support bracket to the inner side of the first intermediate flanges using two M8x1.25x45mm bolts fitted to the passenger side flange , two 4mm spacers fitted to the passenger side flange, two M8x1.25x40mm bolts, four M8x1.25

ProMan

A ROCK SOLID REPUTATION

70-84 Miller Street, Epping, Victoria 3076
Phone (+61 3) 8401 8500 Facsimile (+61 3) 9401 4869



redbackexhausts.com.au



**EXTREME
DUTY**

**Engineered durability,
extreme duty 4x4 performance.**



Application: TYP47700-XPB, TYP47700-XCB

lock nuts, eight M8 flat washers and tighten finger tight. Refer Figure 13.

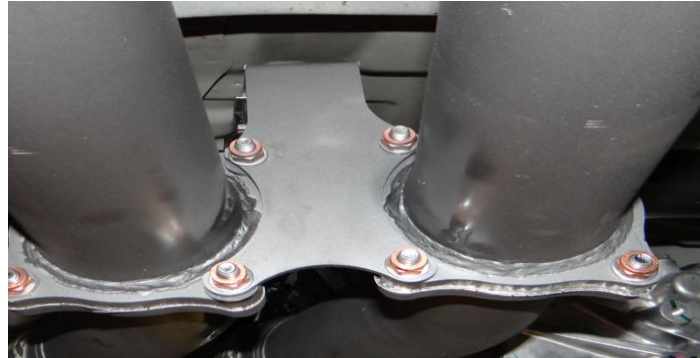


Figure 13.

22. Fit twin resonator/pipe assembly to first intermediate pipes using six M8x1.25x35mm bolts, eight M8x1.25 lock nuts and fourteen M8 flat washers and tighten finger tight. Refer Figure 14.



Figure 14.

23. Fit the passenger side rear intermediate tail pipe to the vehicle using four M8x1.25x35mm bolts, four M8x1.25 lock nuts and eight M8 flat washers and tighten finger tight.
24. Fit the passenger rear tail pipe to the vehicle using four M8x1.25x35mm bolts, four M8x1.25 lock nuts and eight M8 flat washers and tighten finger tight.
25. Fit the driver's side rear intermediate pipe to the twin resonator/pipe using four M8x1.25x35mm bolts, four M8x1.25 lock nuts and eight M8 flat washers tighten finger tight. Refer Figure 15.

ProMan

A ROCK SOLID REPUTATION

70-84 Miller Street, Epping, Victoria 3076
Phone (+61 3) 8401 8500 Facsimile (+61 3) 9401 4869



redbackexhausts.com.au



**EXTREME
DUTY**

**Engineered durability,
extreme duty 4x4 performance.**



Application: TYP47700-XPB, TYP47700-XCB



Figure 15.

26. Fit the right hand rear intermediate pipe to the driver's side rear intermediate pipe using four M8x1.25x35mm bolts, four M8x1.25 lock nuts and eight M8 flat washers tighten finger tight.
27. Fit the right hand rear tail pipe to the driver's side rear intermediate pipe using four M8x1.25x35mm bolts, four M8x1.25 lock nuts and eight M8 flat washers tighten finger tight.
28. Remove the right hand rear mud flap and trim the inner edge to allow for the new right hand exhaust pipe and refit mud flap.
29. Inspect all wiring and fuel lines have sufficient clearance from the exhaust pipe.
30. Tighten all nuts and bolts from the front of the vehicle to the back ensuring all flanges are aligned with each other and test for leaks.
31. Bleed brakes as per factory specifications.
32. Test drive the vehicle.

NOTE: WE RECOMMEND FITTING THIS PRODUCT EITHER ON A 4 POST HOIST OR ON THE GROUND

ProMan

A ROCK SOLID REPUTATION

70-84 Miller Street, Epping, Victoria 3076
Phone (+61 3) 8401 8500 Facsimile (+61 3) 9401 4869



redbackexhausts.com.au