



SAFARI R-SPEC SNORKEL

SS225R

01/04/15

ITEM	DESCRIPTION	QTY	PART NO
1	BODY – SNORKEL	1	760-133-000R
2	DUCT - INNER	1	760-124-000
3	CUFFED HOSE – 82mm I.D x 260mm	1	000-887-026
4	3" AIR RAM ASSEMBLY	1	000-135-050
5	BRACKET - UPPER MOUNTING	1	770-032-000
6	GUIDE FIXTURE	1	760-032-900
7	EDGING - RUBBER - 300MM	1	000-953-030
8	INSERT - PLASTIC	3	000-960
9	STUD - S/S - 8MM x 1.25 x 25MM - O/L	2	000-110
10	WASHER - BODY - 8MM x 30MM	3	000-311-300
11	NUT - NYLOC - 8MM x 1.25	3	000-205-300
12	BOLT - HEX - 6MM x 1.0 X 14MM	4	000-002-100
15	BOLT – HEX 8mm x 1.25mm x 120mm BL/ZN	1	000-050-100
16	SCREW - S/7 4.2MM X 13MM	3	000-951
17	CLAMP - HOSE - 70/90	2	000-908
18	TEMPLATE	1	760-017-000
19	WASHER – FLAT 8mm S/S	1	000-302-300
20	HOSE CLAMP - SIZE 48 (BLACK)	1	000-918/B

WARNING!!

**IT IS AN INSTALLER
RESPONSIBILITY TO VERIFY
ALL COMPONENTS, AND
PARTICULARLY THE
TEMPLATE ARE CORRECT,
BEFORE STARTING ANY PART
OF THE SNORKEL
INSTALLATION.**

**(CHECK TEMPLATE AGAINST
SNORKEL BODY)**



SAFARI R-SPEC SNORKEL

SS225R

HOLDEN JACKAROO

3.2L V6 PETROL ENGINE

Fitment to: Left hand side
Fitting time: Approximately 120 minutes
Special Tools: 89mm holesaw
92mm holesaw
Step drill

Instructions:

1. Remove left front wheel arch liner and air cleaner assembly. Remove air entry duct and pre-spinner from air cleaner housing.
2. Tape template to upper rear corner of left hand guard. Mark the hole positions using a felt pen. Drill a 4mm pilot hole for each hole position. Drill main hole to 89mm using the holesaw. Drill the 2 mounting holes to 16mm using the step drill. De-burr and paint holes.
3. To mark hole on inner guard, bolt the guide fixture to 2 existing holes (see drawing) and mark hole centre through third hole on fixture. Drill a 4mm

pilot hole. Drill hole to 92mm using the holesaw. De-burr and paint hole. Install rubber edging.

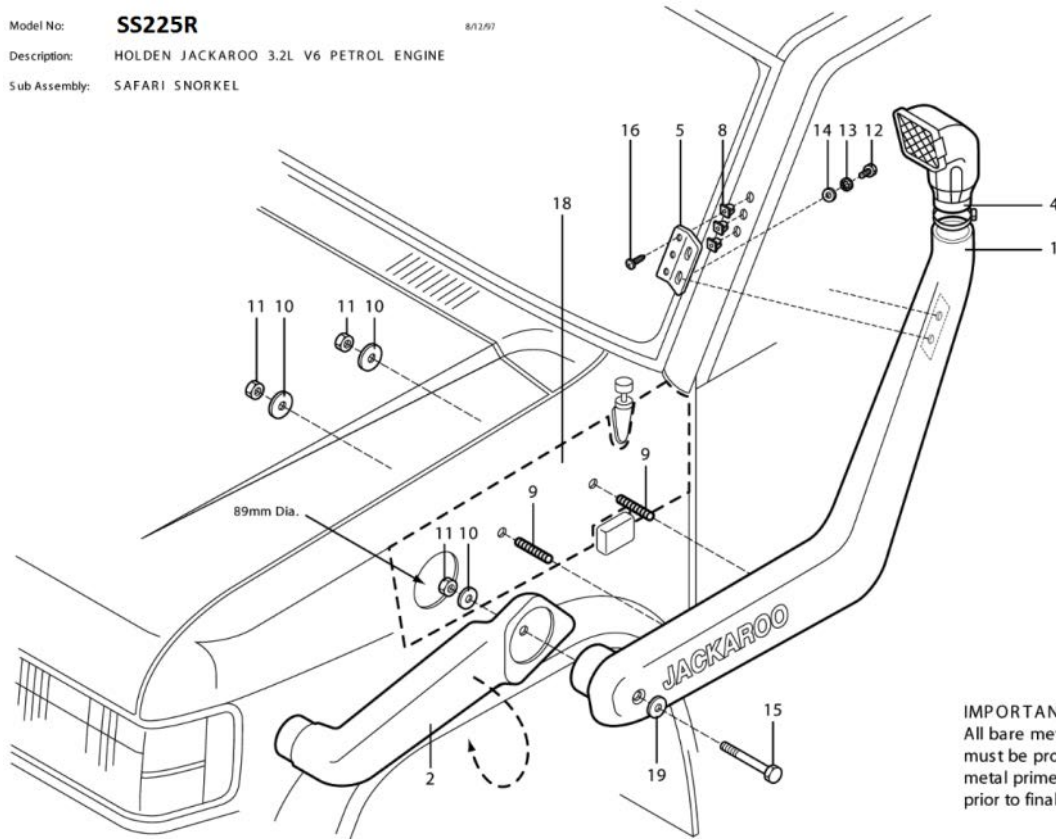
4. Install mounting studs and upper mounting bracket to snorkel. Position on guard and mark around outside of upper mounting bracket on "A" pillar. Remove snorkel and place bracket on "A" pillar. Carefully mark 3 hole positions. Drill to 8mm. De-burr and paint holes. Insert plastic plugs and secure upper mounting bracket to "A" pillar.
5. Install snorkel to guard and fasten using necessary hardware. Install inner duct to wheel arch and position onto snorkel. Clamp together by using the 8mm x 120mm bolt. (Do not overtighten.)
 - Use silicone for a waterproof finish.
6. Install flexible duct to air cleaner housing and refit assembly. Connect flexible ducting to snorkel duct and fasten hose clamp. (Do not overtighten.)
7. Refit wheelarch liner. Install air ram to snorkel and fasten.

SAFARI

4X4 ENGINEERING

Model No: **SS225R**
Description: HOLDEN JACKAROO 3.2L V6 PETROL ENGINE
Sub Assembly: SAFARI SNORKEL

8/12/97



IMPORTANT
All bare metal surfaces
must be protected with
metal primer or paint
prior to final installation.

SAFARI

4X4 ENGINEERING

Model No: **SS225R** 8/12/97
Description: **HOLDEN JACKAROO 3.2L V6 PETROL ENGINE**
Sub Assembly: **SAFARI SNORKEL**

IMPORTANT
All bare metal surfaces
must be protected with
metal primer or paint
prior to final installation

