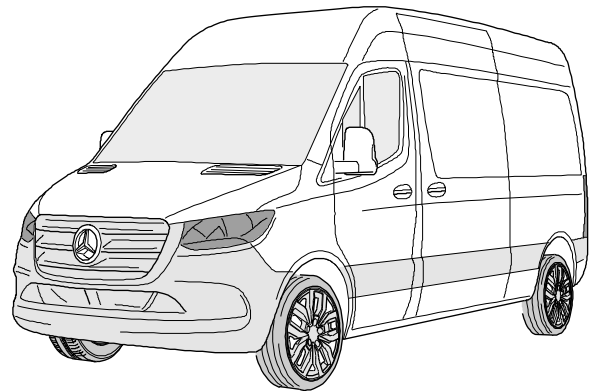
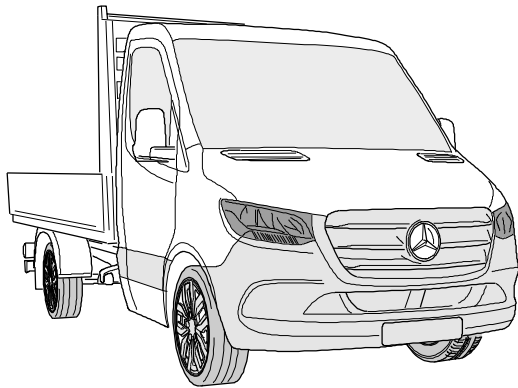




ERICH JAEGER

Installation instructions



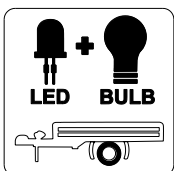
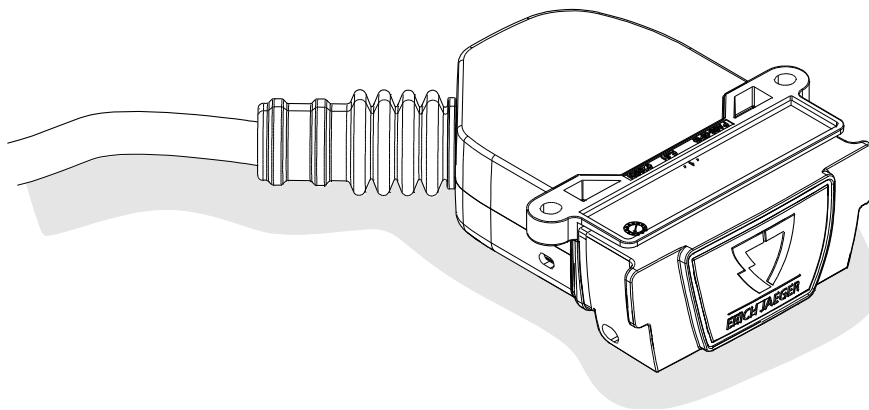
750112

MERCEDES BENZ Sprinter W907 / W910

06/18 >>



SCAN FOR
LATEST
INSTRUCTIONS



Reference:

The following information must be reviewed before beginning the assembly:

The installation instructions are to be thoroughly read.

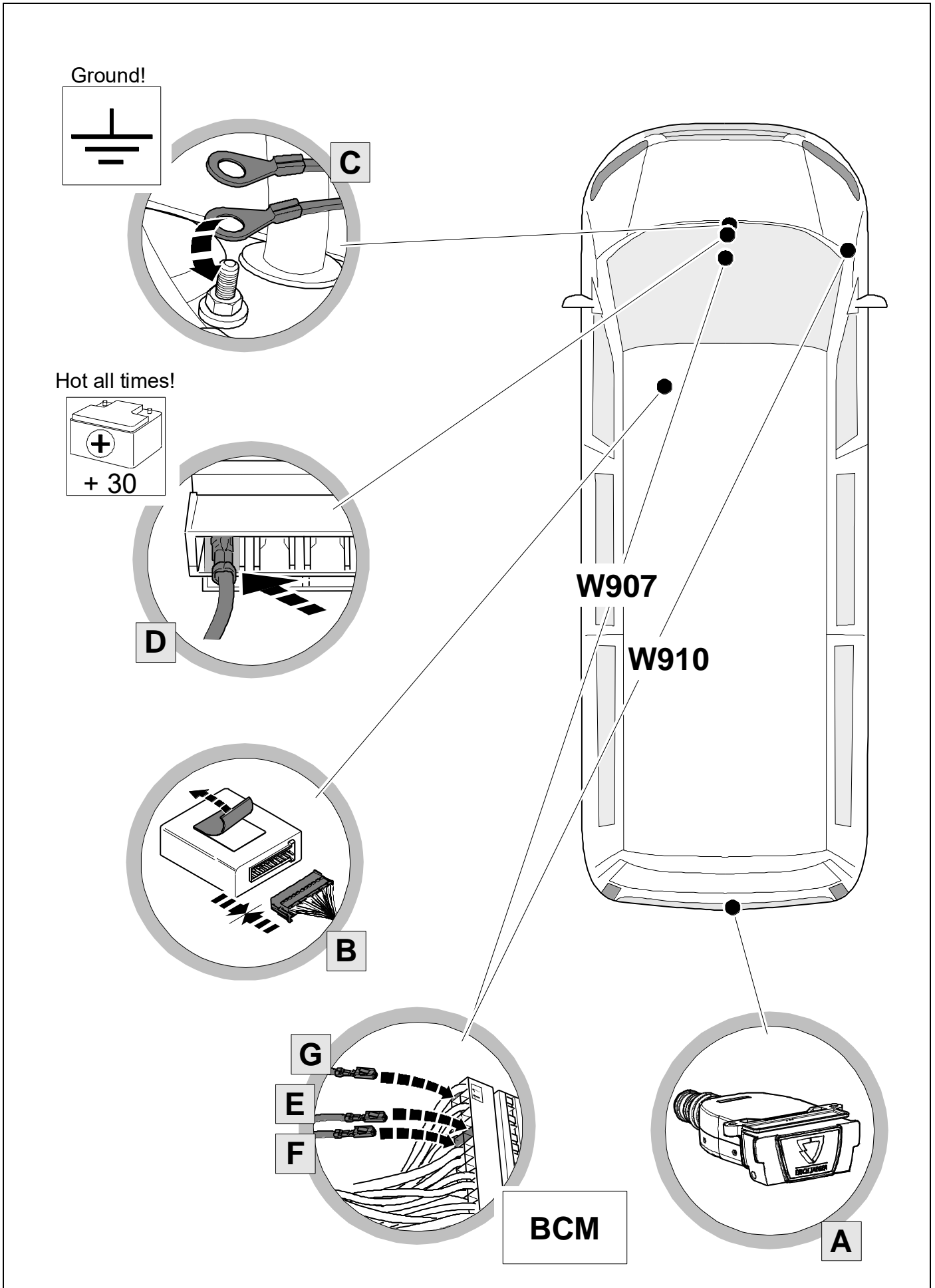
The installation should be carried out by qualified personnel with the relevant technical knowledge.

The vehicle manufacturers' current technical notices and information on retrofitting must be followed.

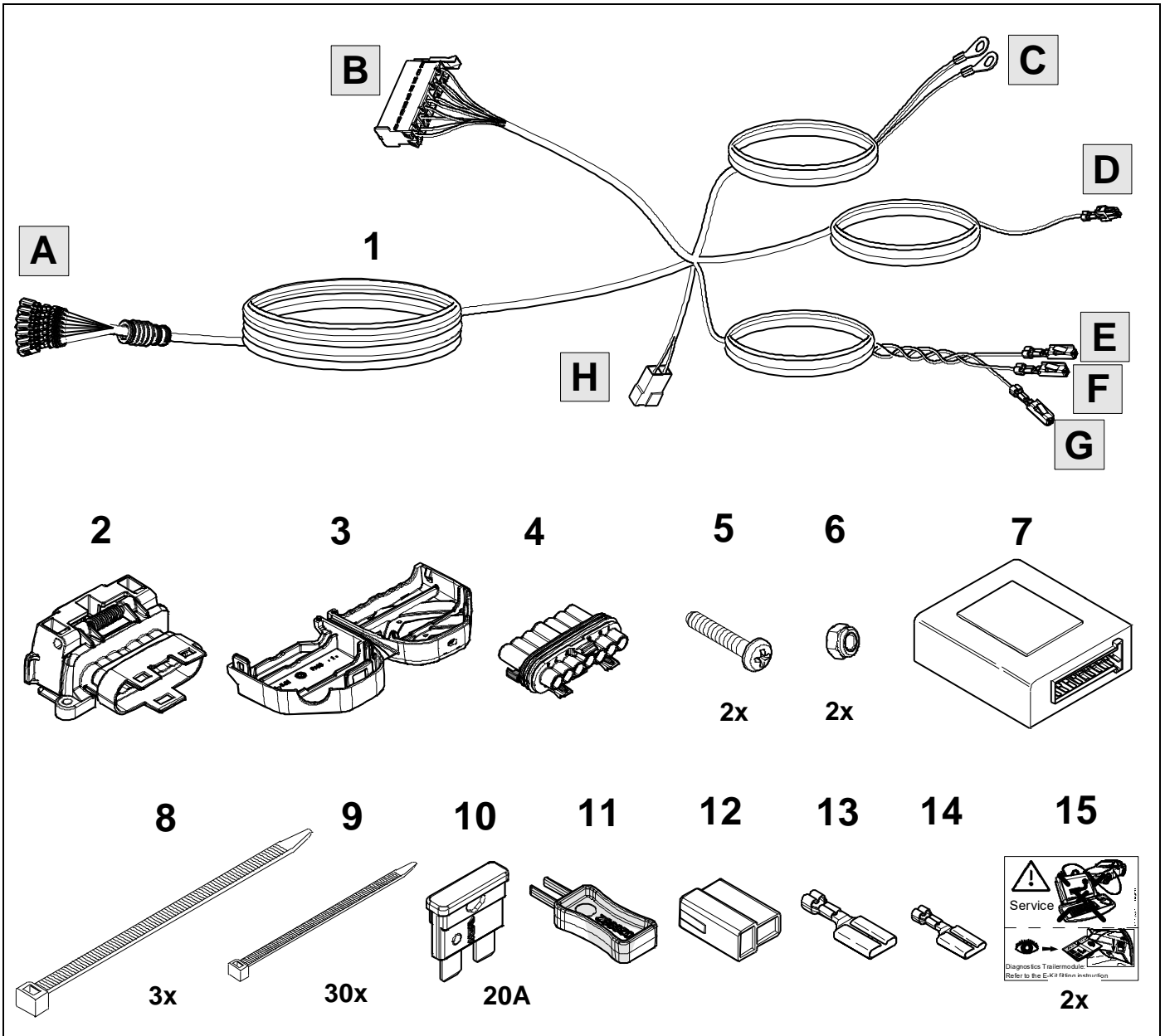
The removal and replacement instructions found in the current repair manuals must be followed.

It must be ensured that the vehicle is technically suitable for the installation of a trailer hitch.

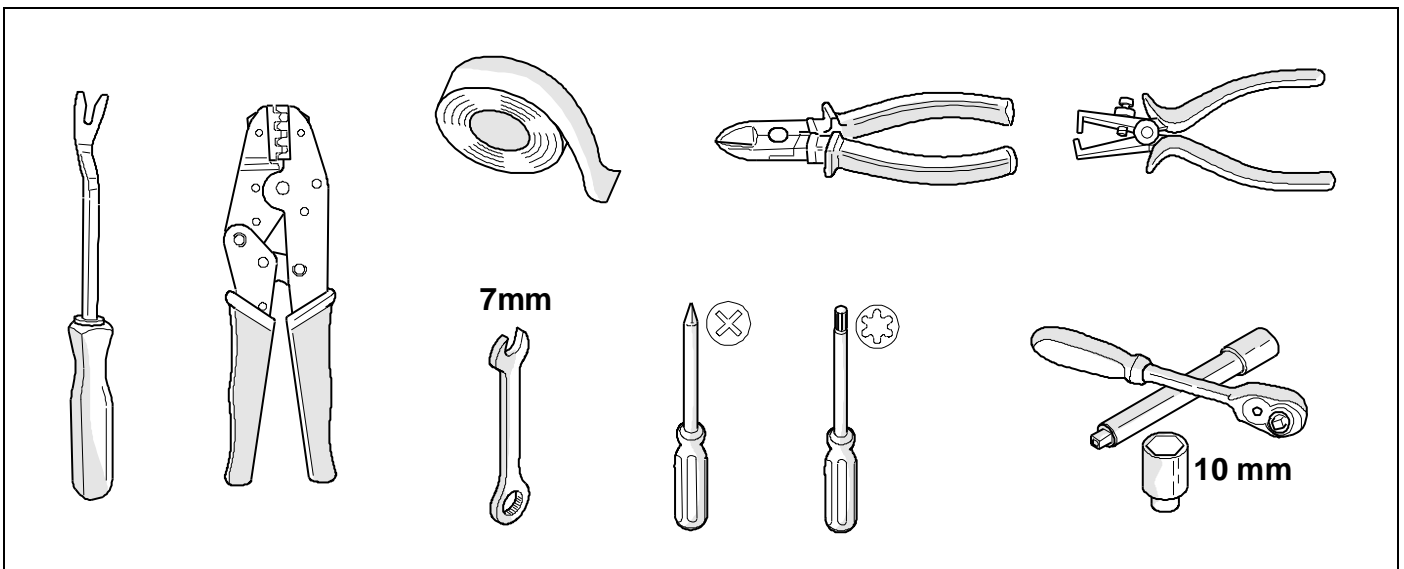
OVERVIEW



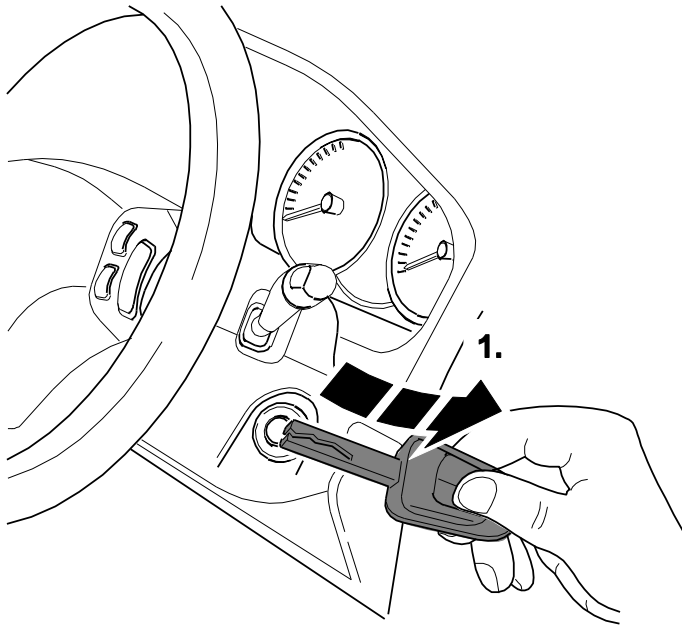
KIT



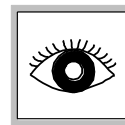
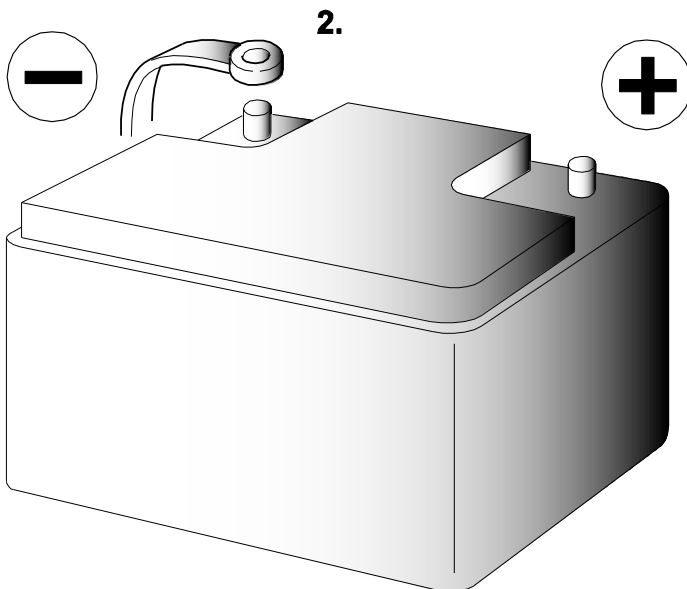
TOOLS



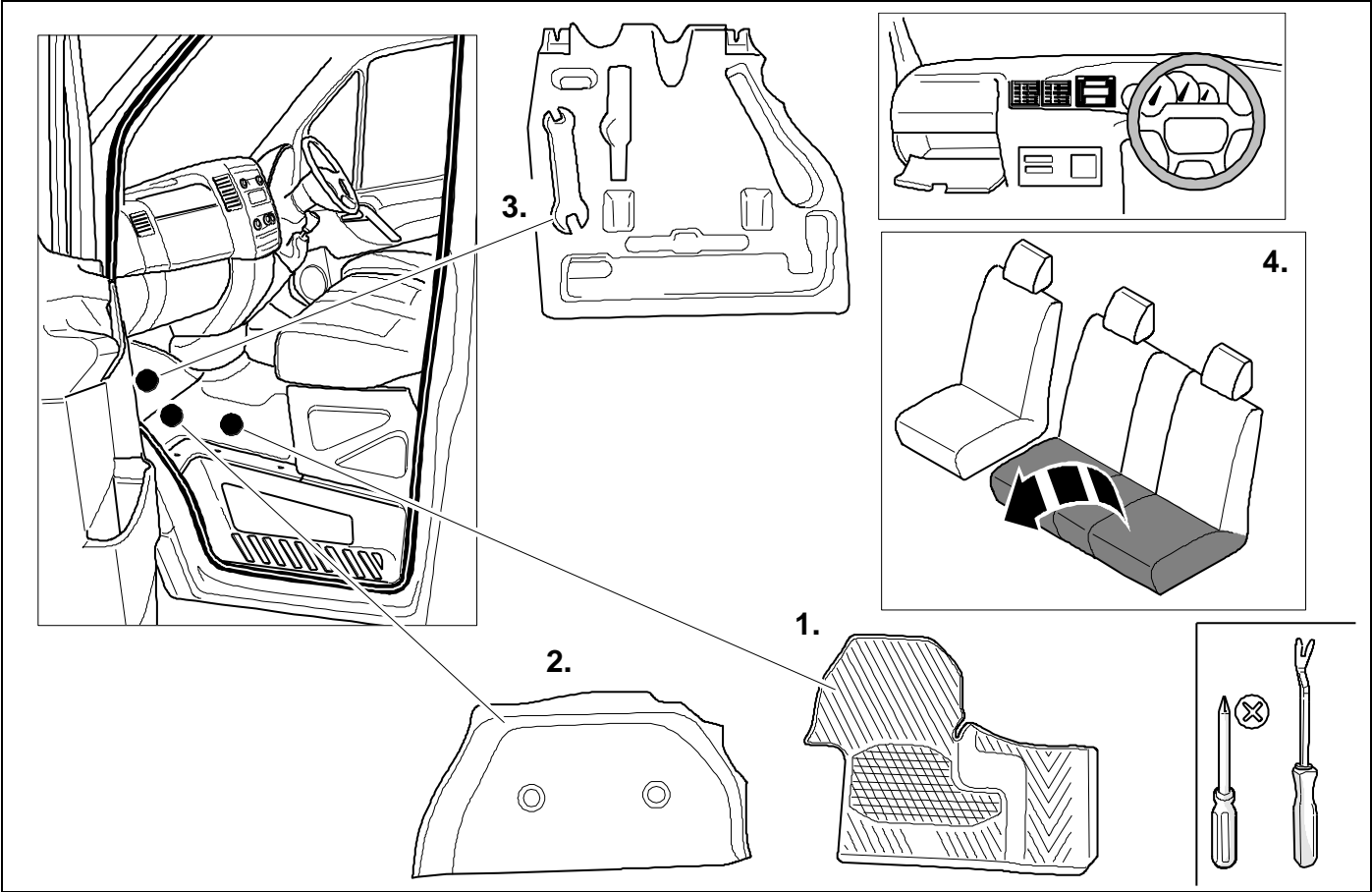
1



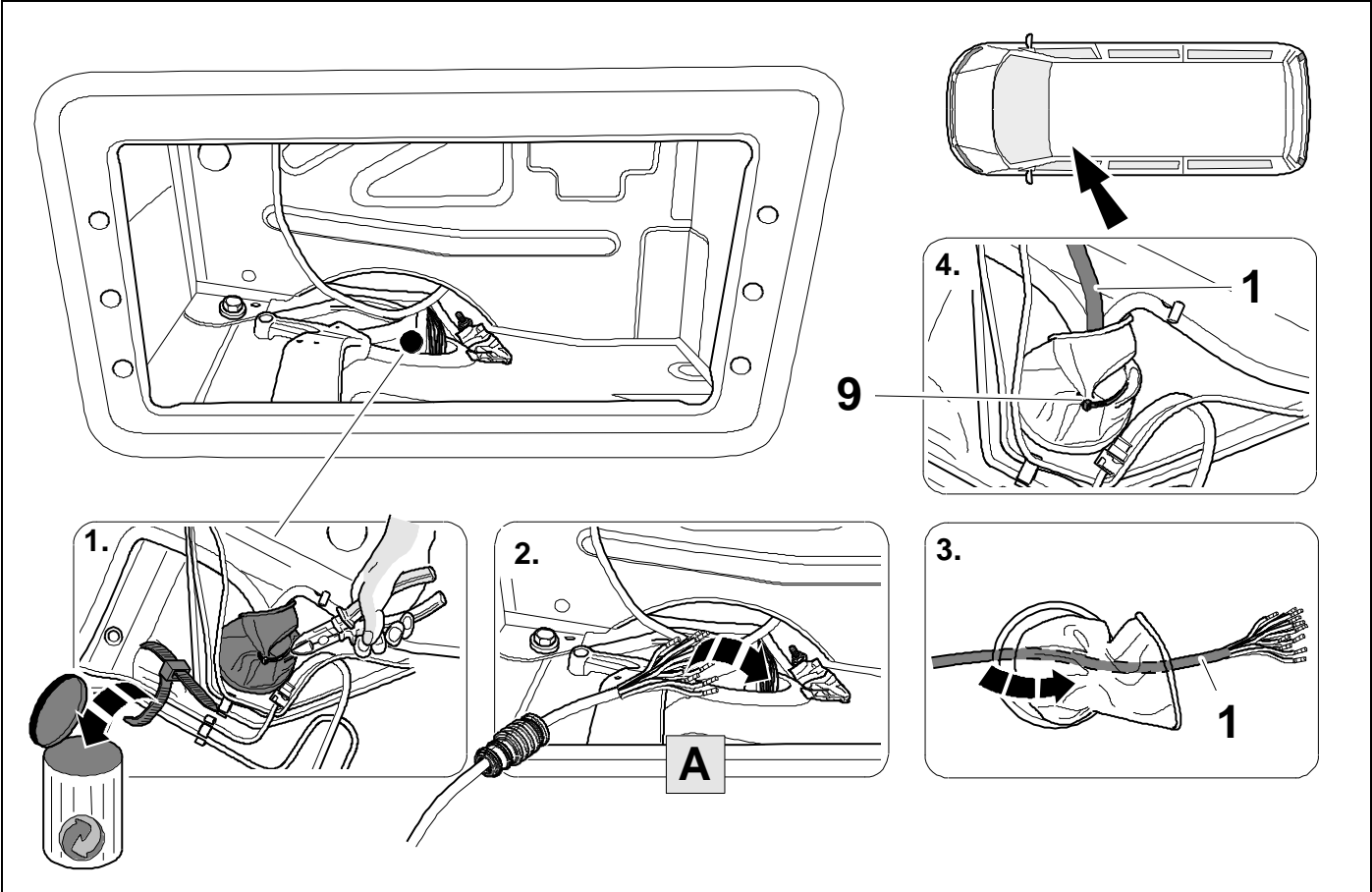
ATTENTION!



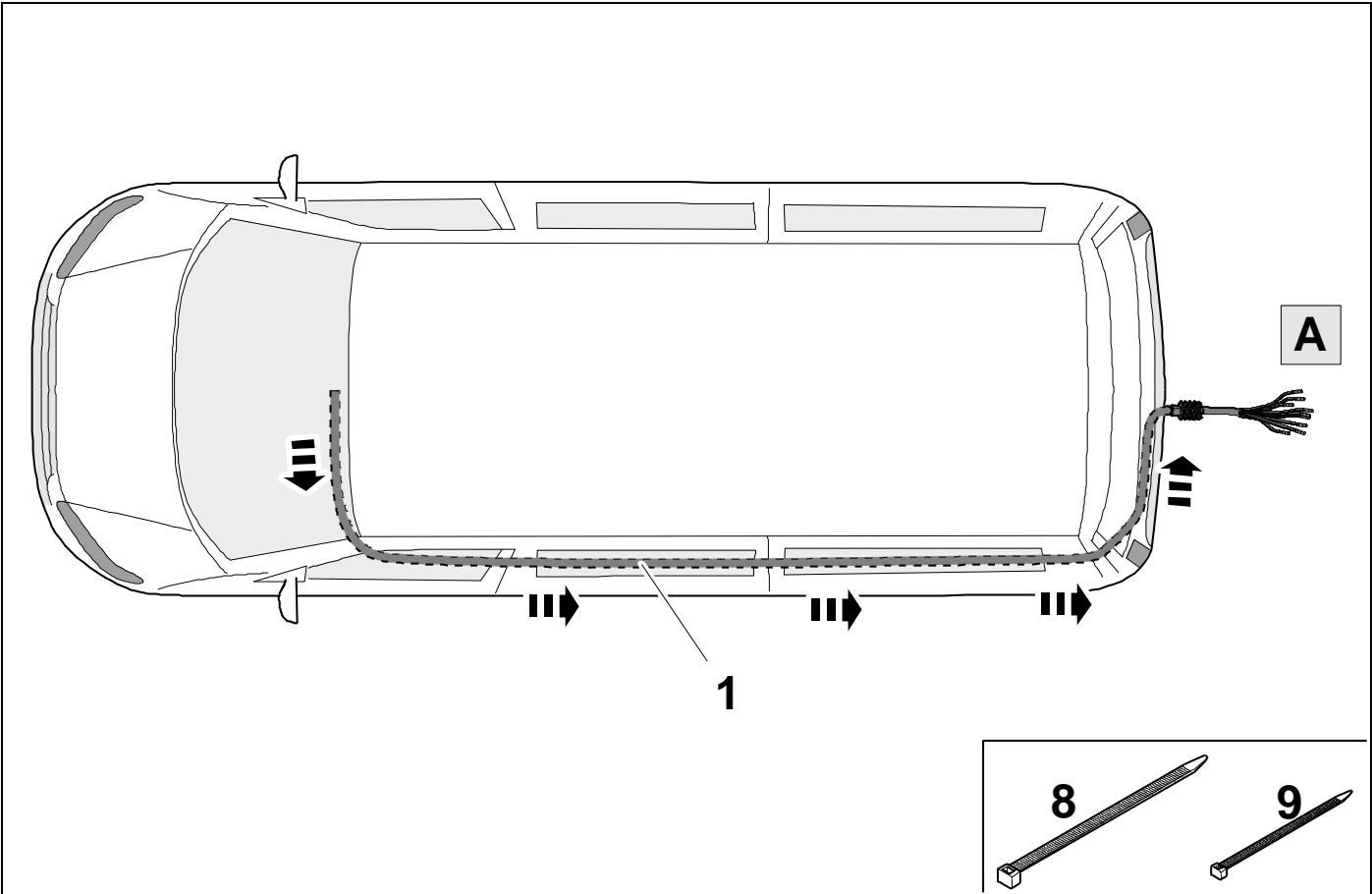
Be careful! If you don't disconnect the battery, the vehicle will show a lot of error messages in instrument panel!

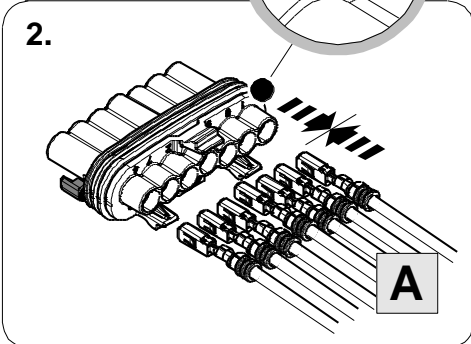
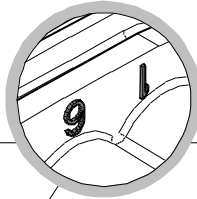
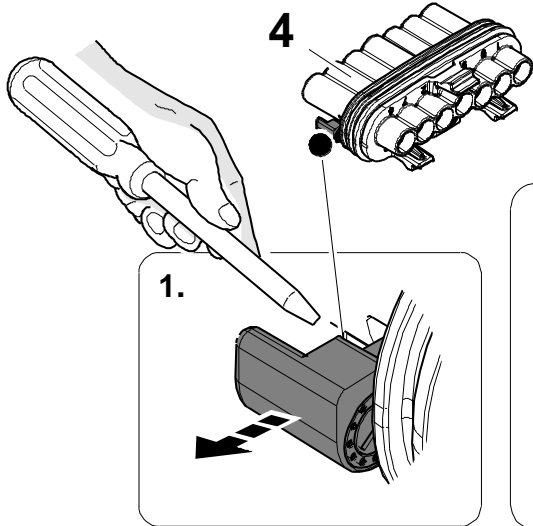


3

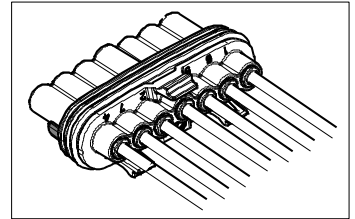
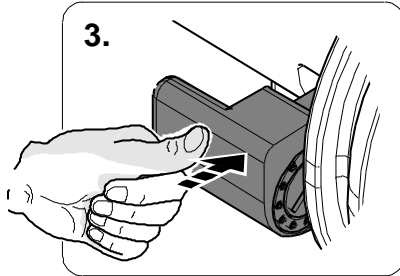
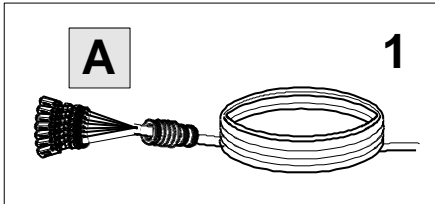


4

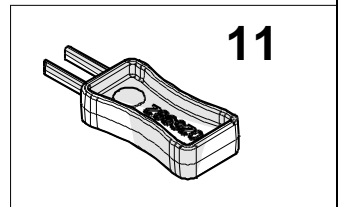
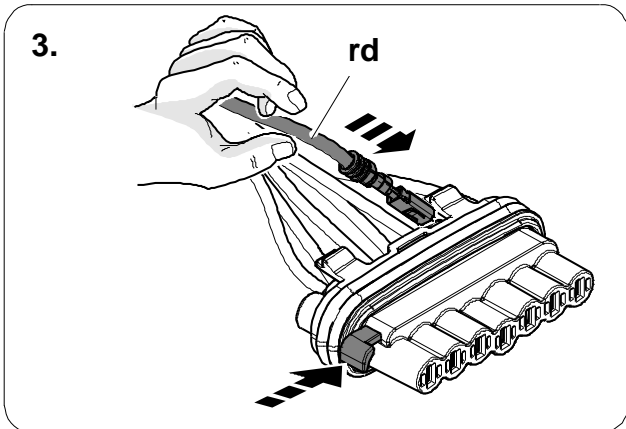
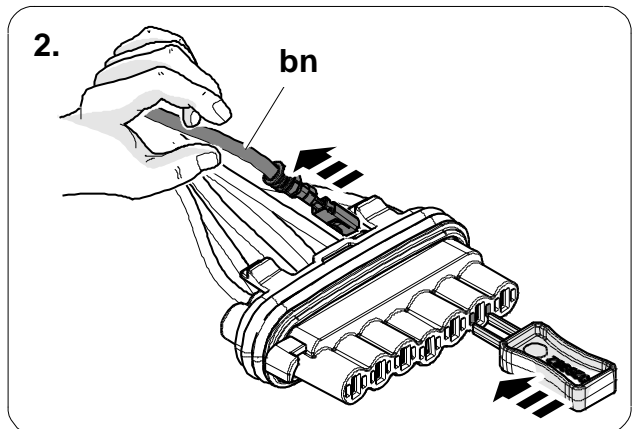
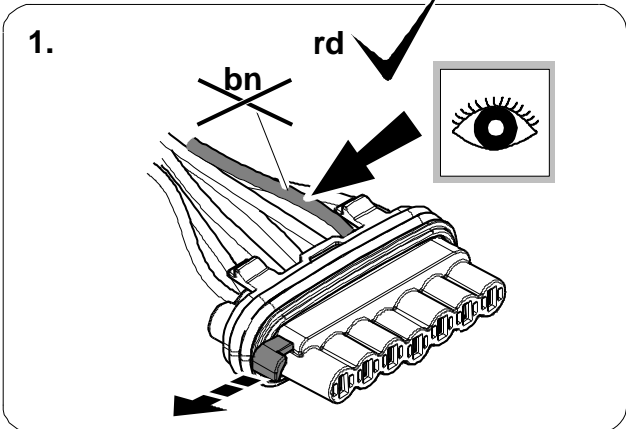




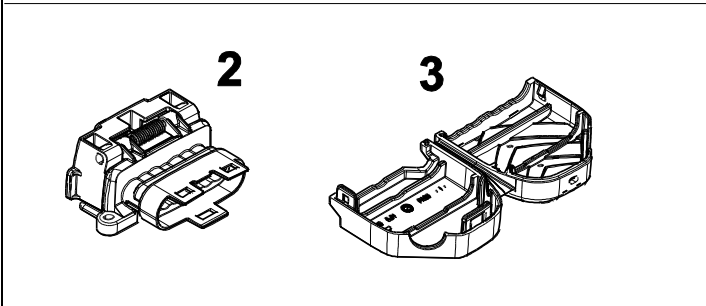
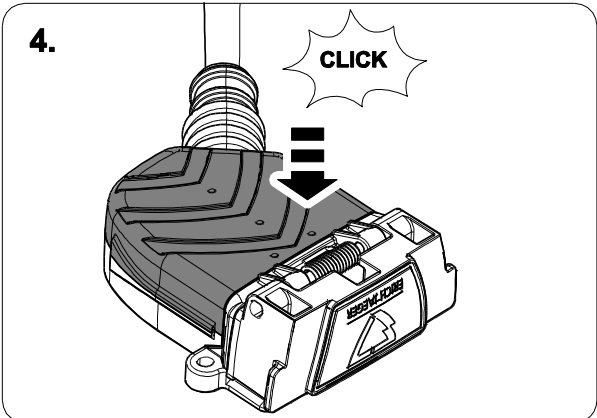
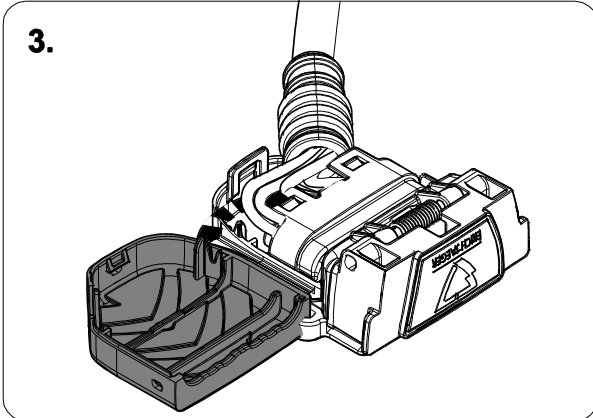
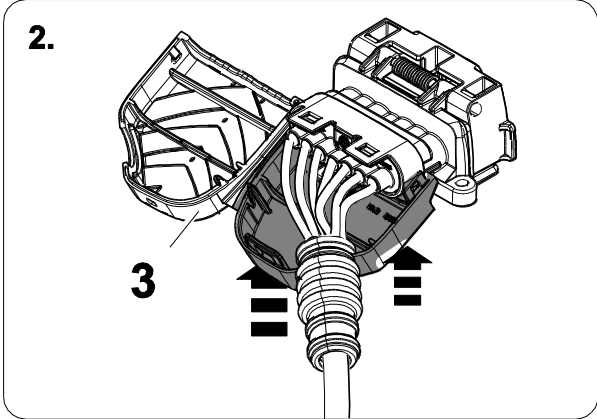
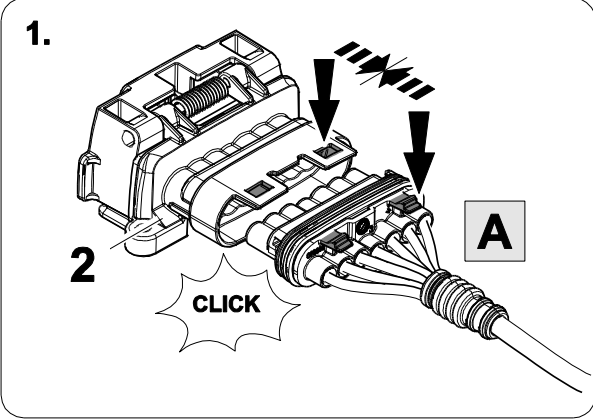
ye	1	
rd	6	
bu	5	
wh	3	
bk	2	
bn	7	
gn	4	



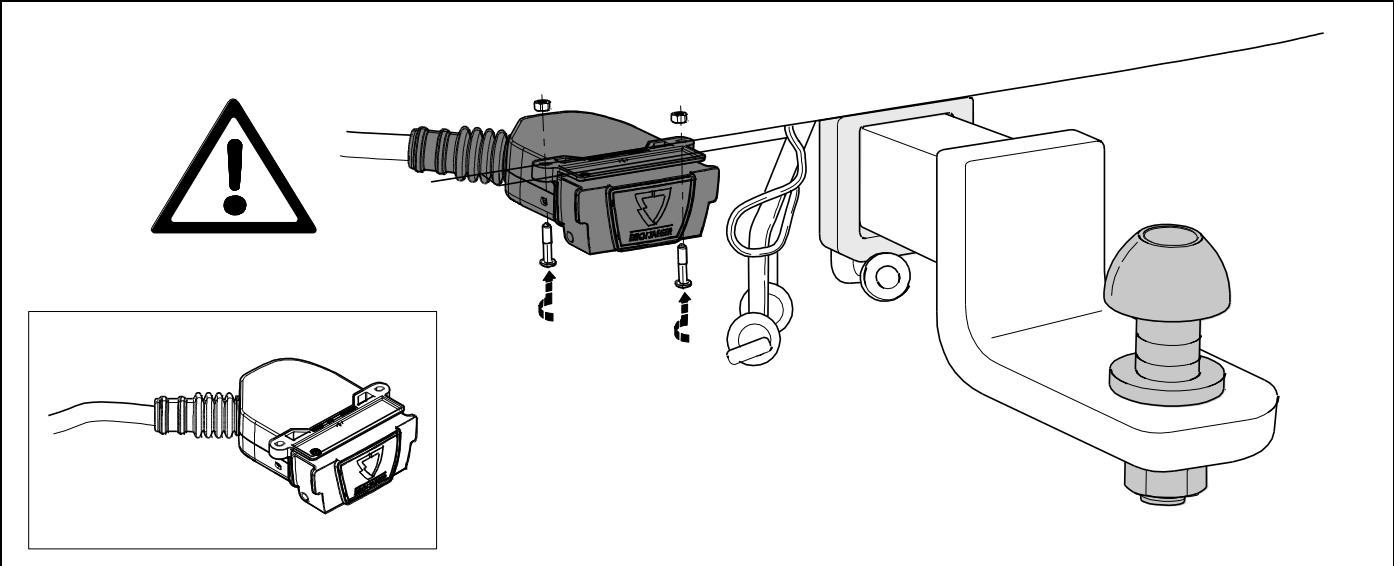
In case of wrong pin insert:



6



7



8



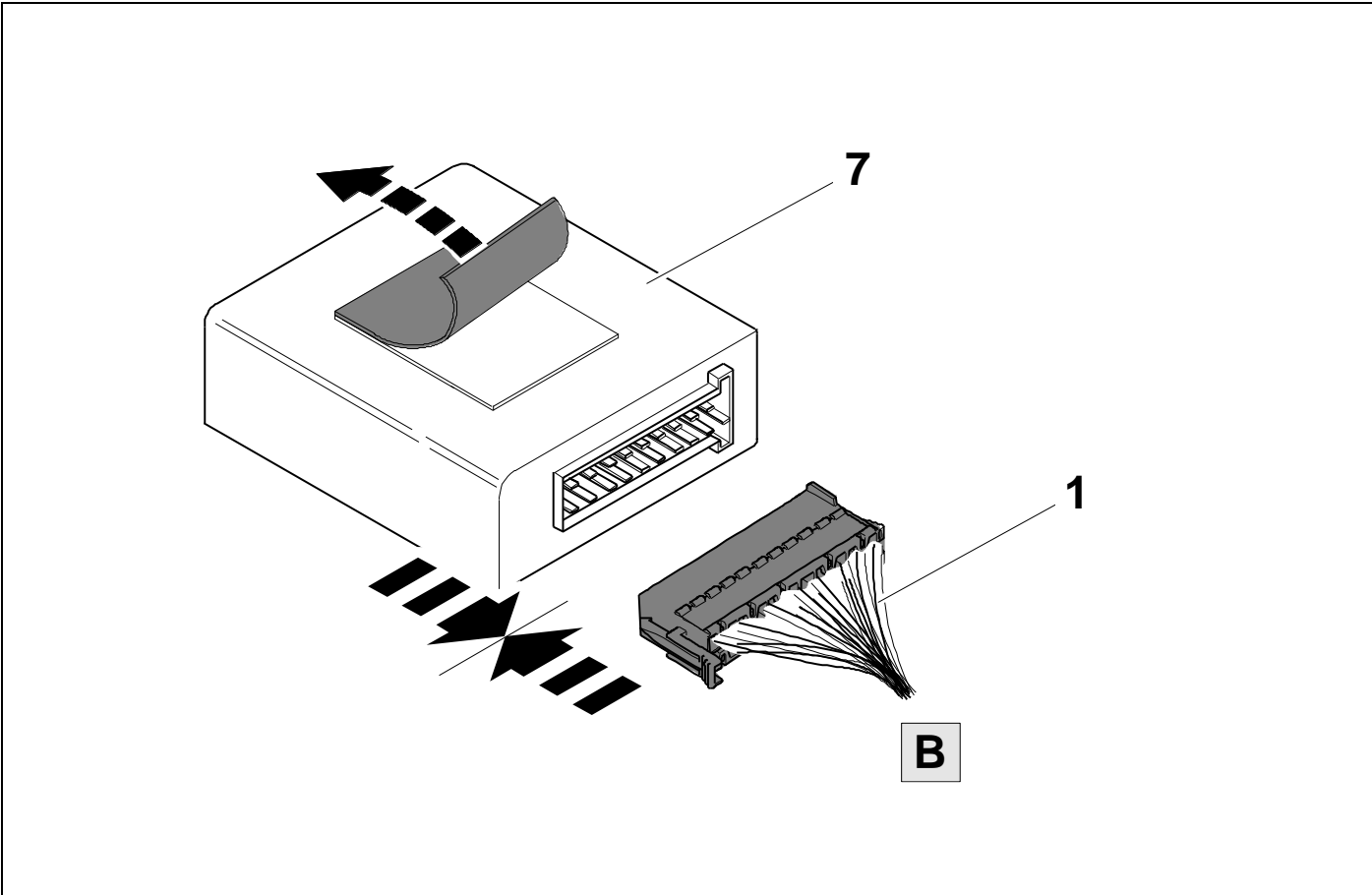
9

1	ye	
2	bk	
3	wh	
4	gn	
5	bu	
6	rd	
7	bn	

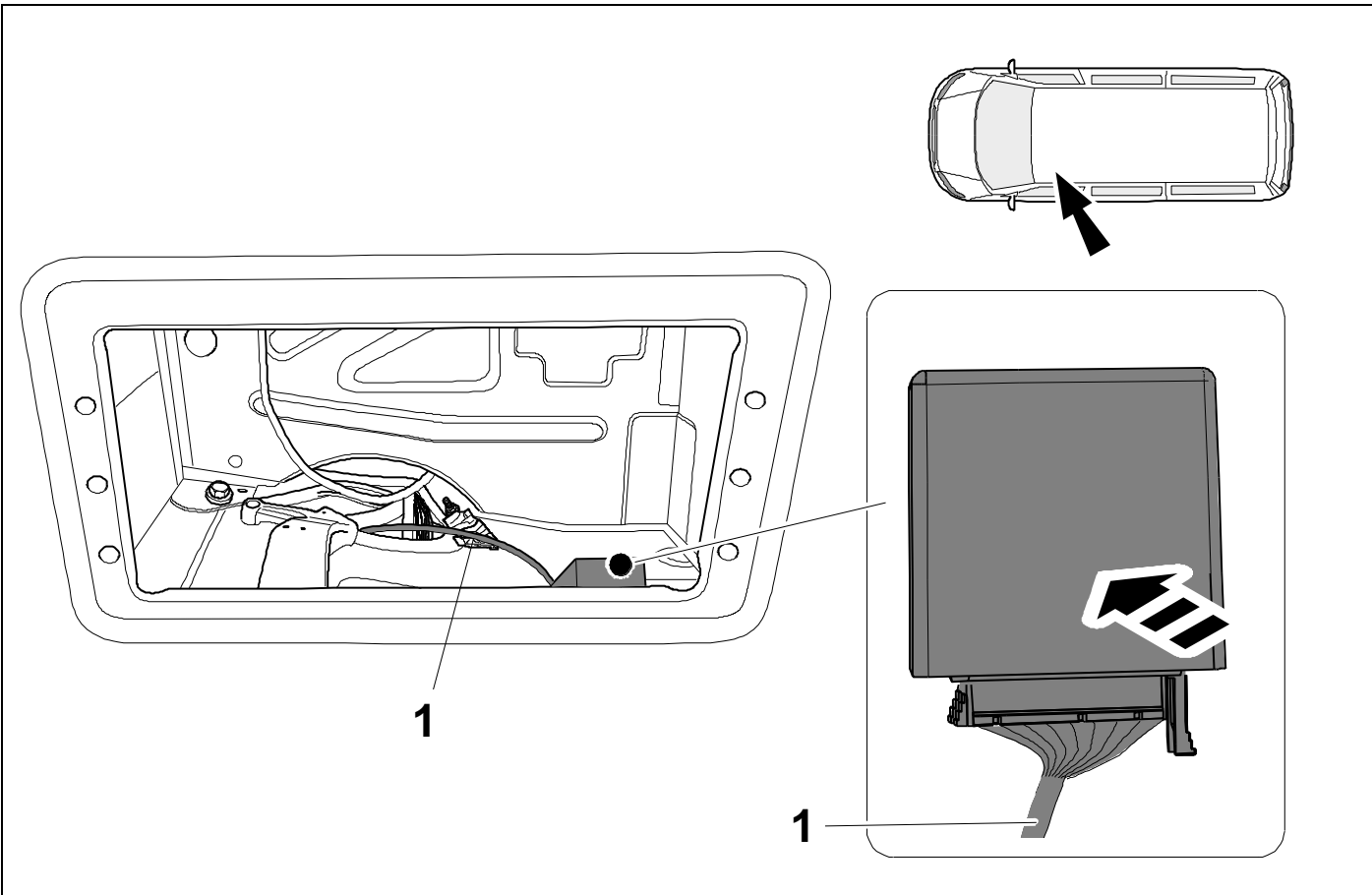
9	bk	wh	gy	gn	rd	bu	ye	bn	pu	or	no
---	----	----	----	----	----	----	----	----	----	----	----

	black	white	grey	green	red	blue	yellow	brown	purple	orange	not occupied
--	-------	-------	------	-------	-----	------	--------	-------	--------	--------	--------------

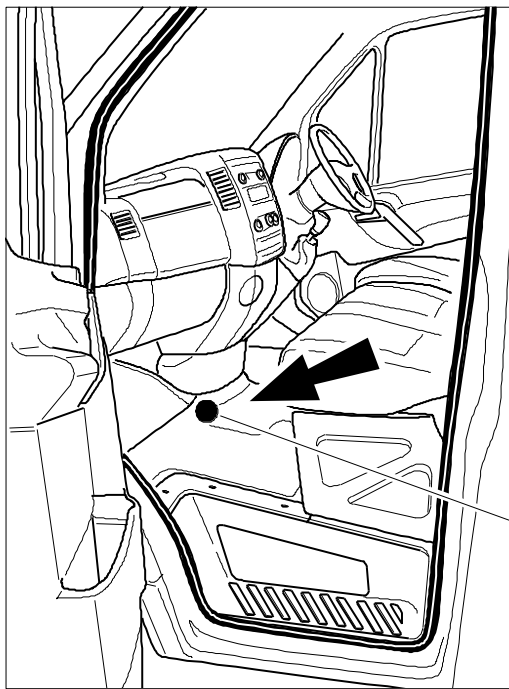
10



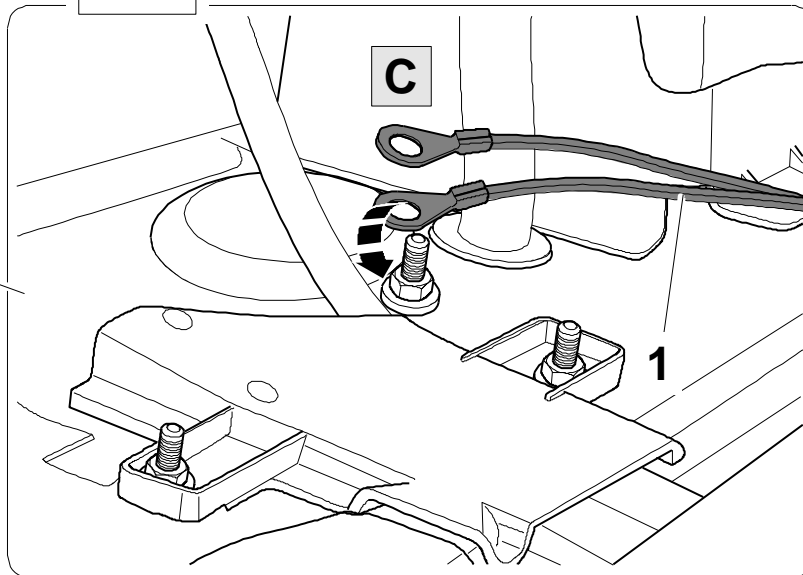
11



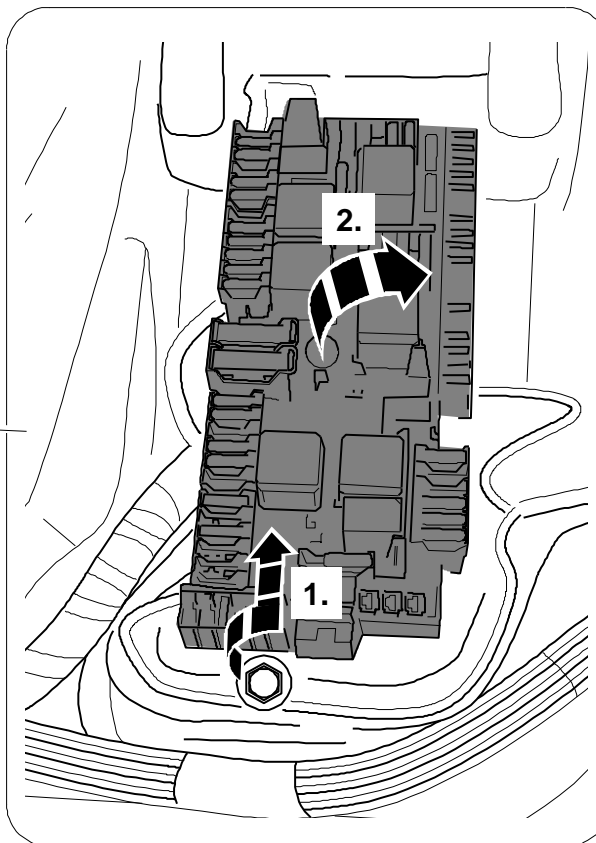
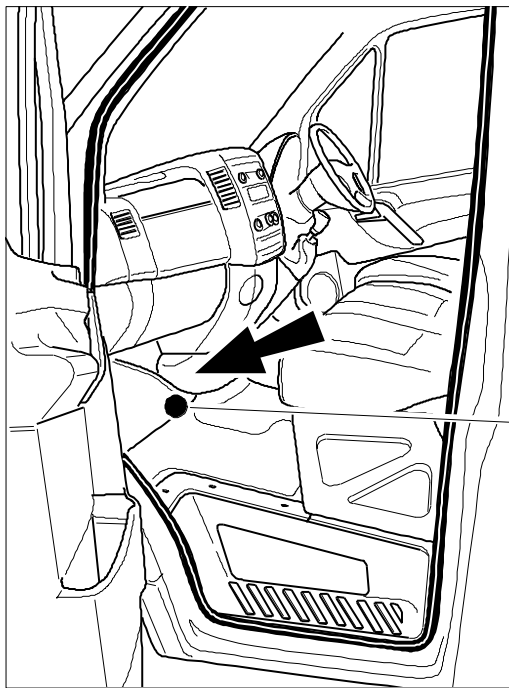
12



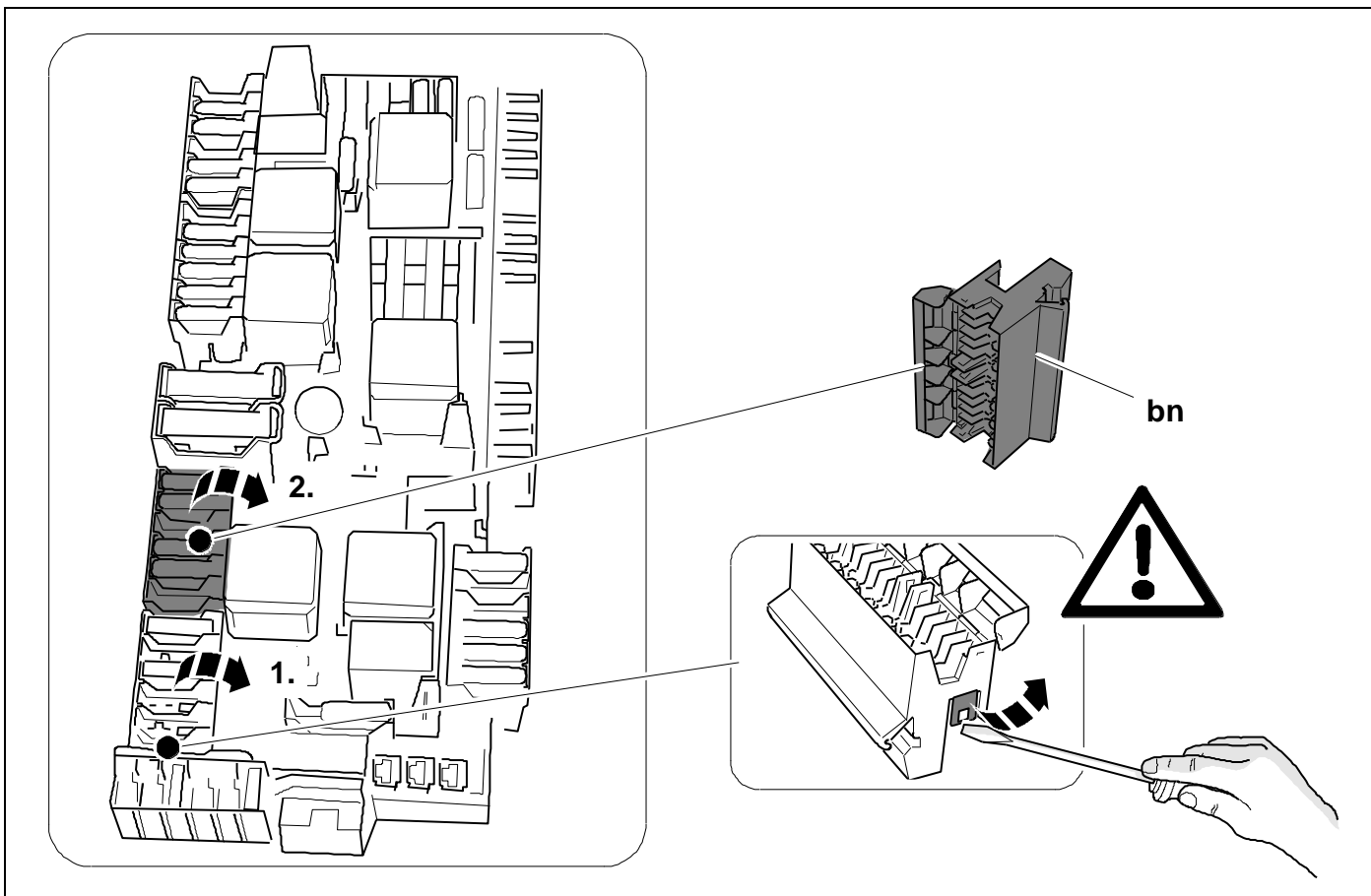
Ground!



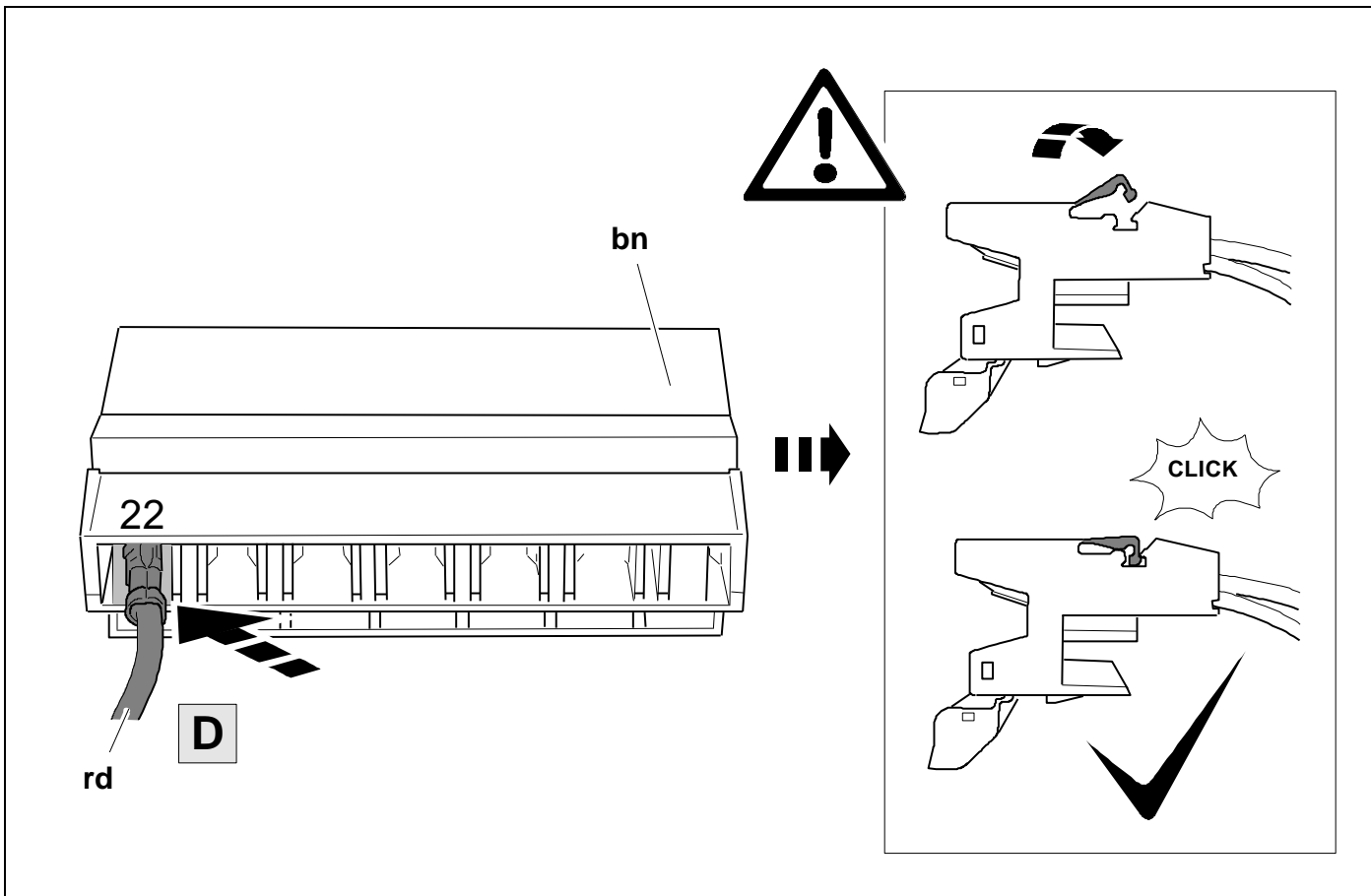
13



14



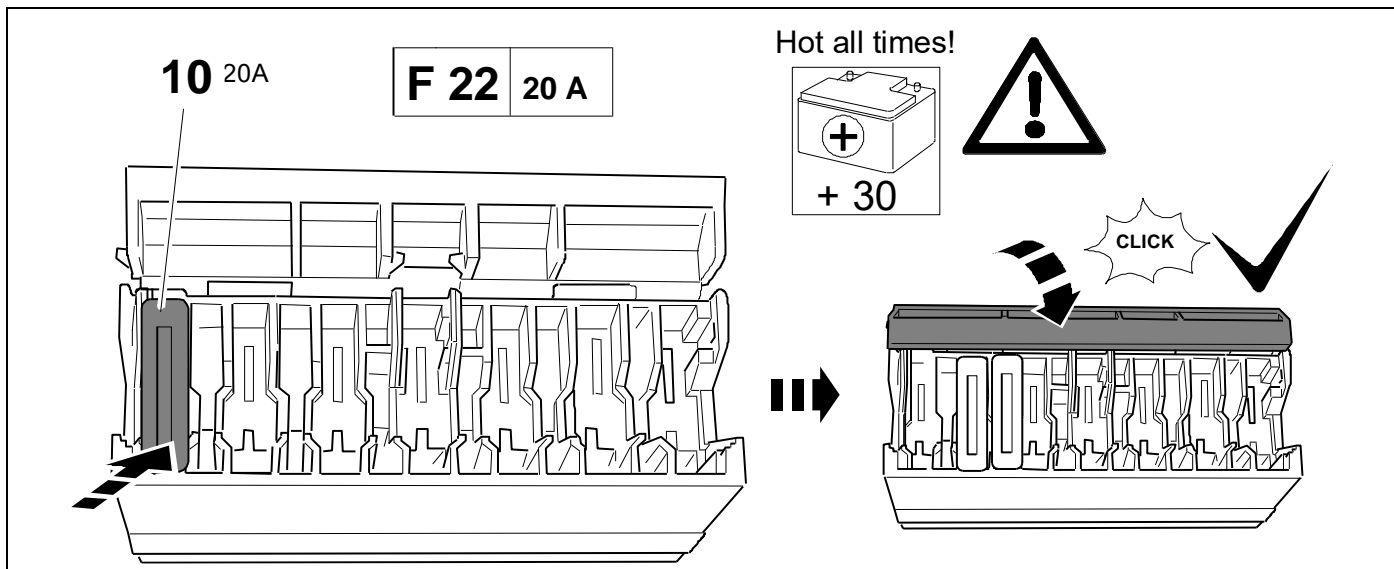
15



16

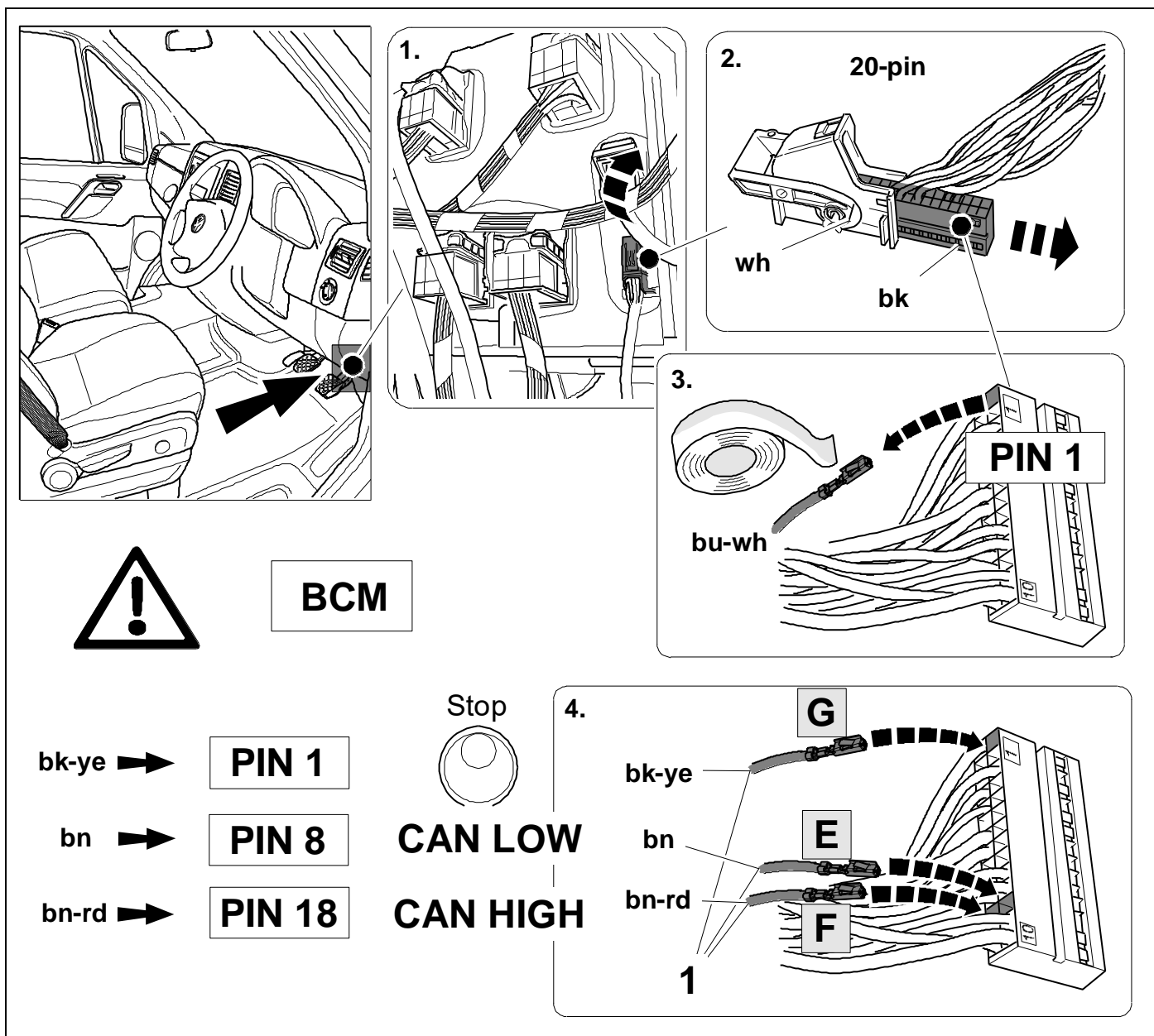


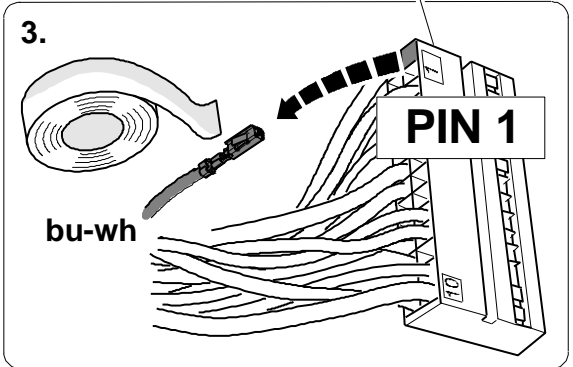
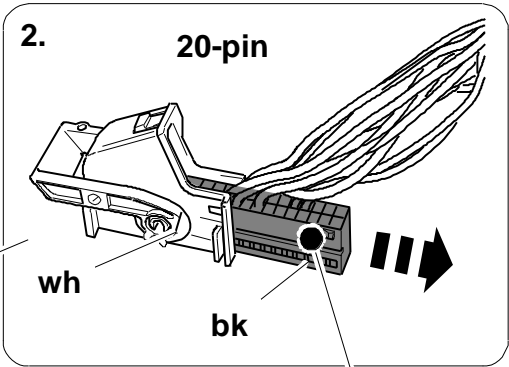
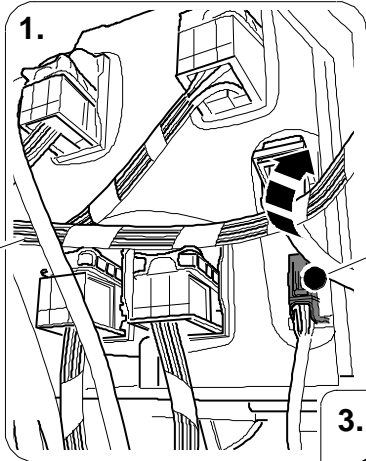
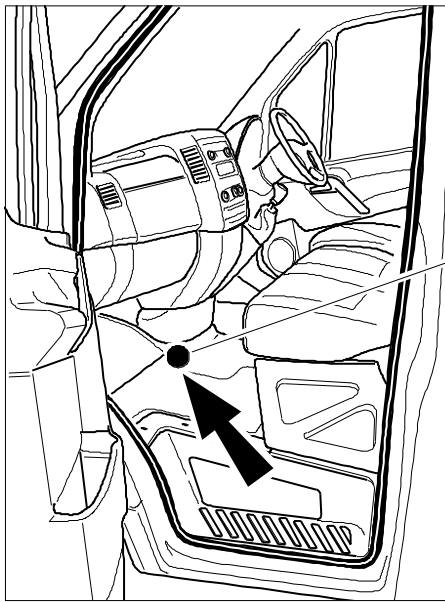
24



17

W907





BCM

bk-ye →

PIN 1

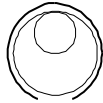
bn →

PIN 8

bn-rd →

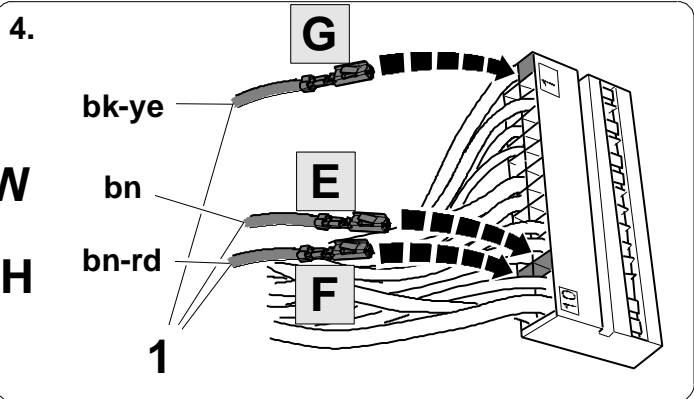
PIN 18

Stop



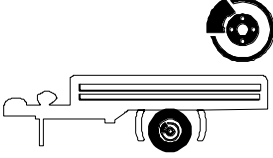
CAN LOW

CAN HIGH

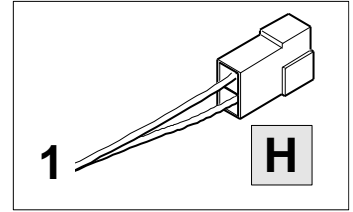




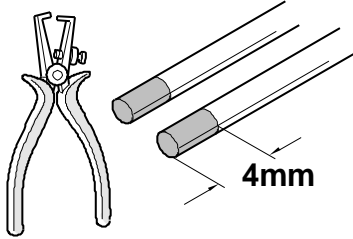
**BRAKE
CONTROLLER
PREPARED**



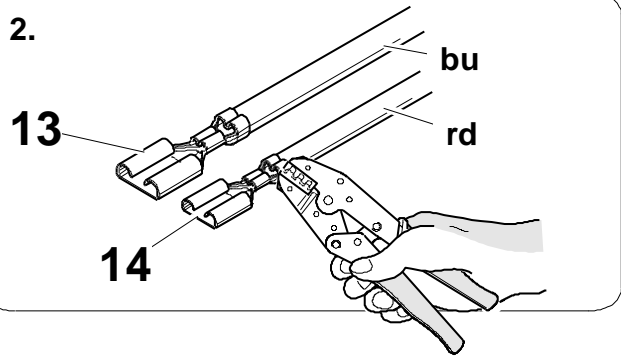
Trailer Brake Preparation



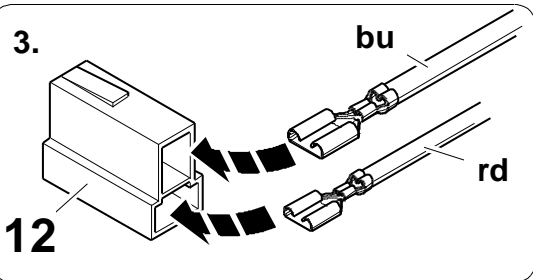
1.



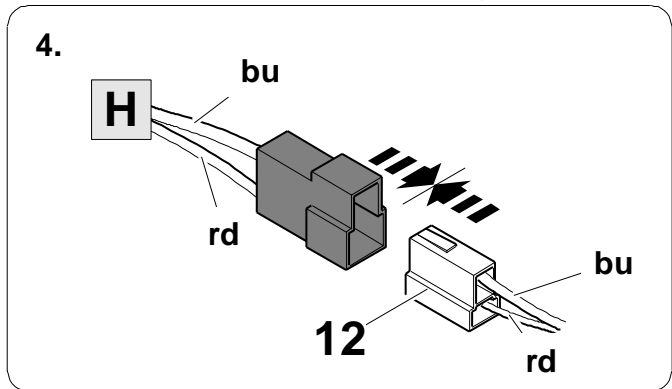
2.



3.



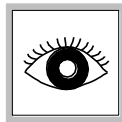
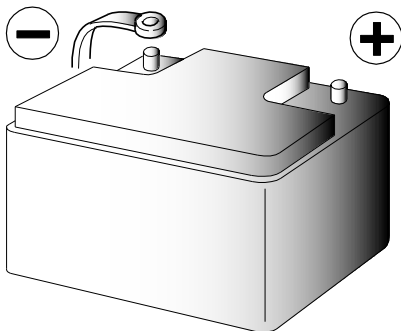
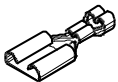
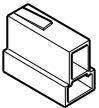
4.



12

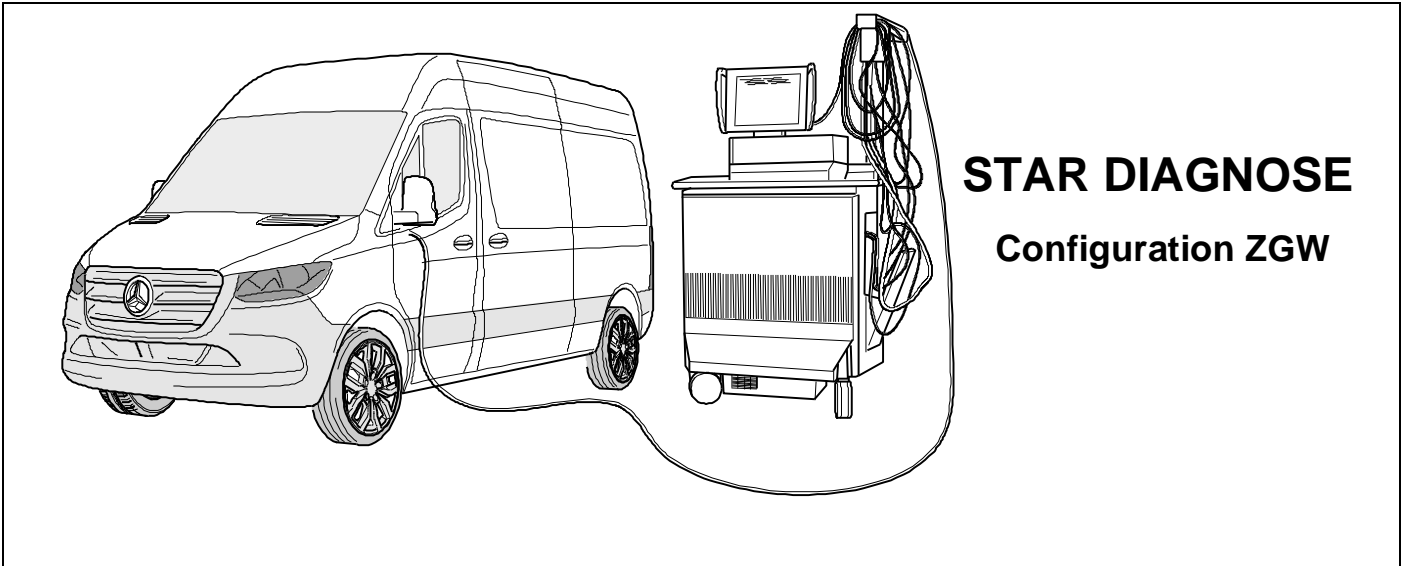
13

14

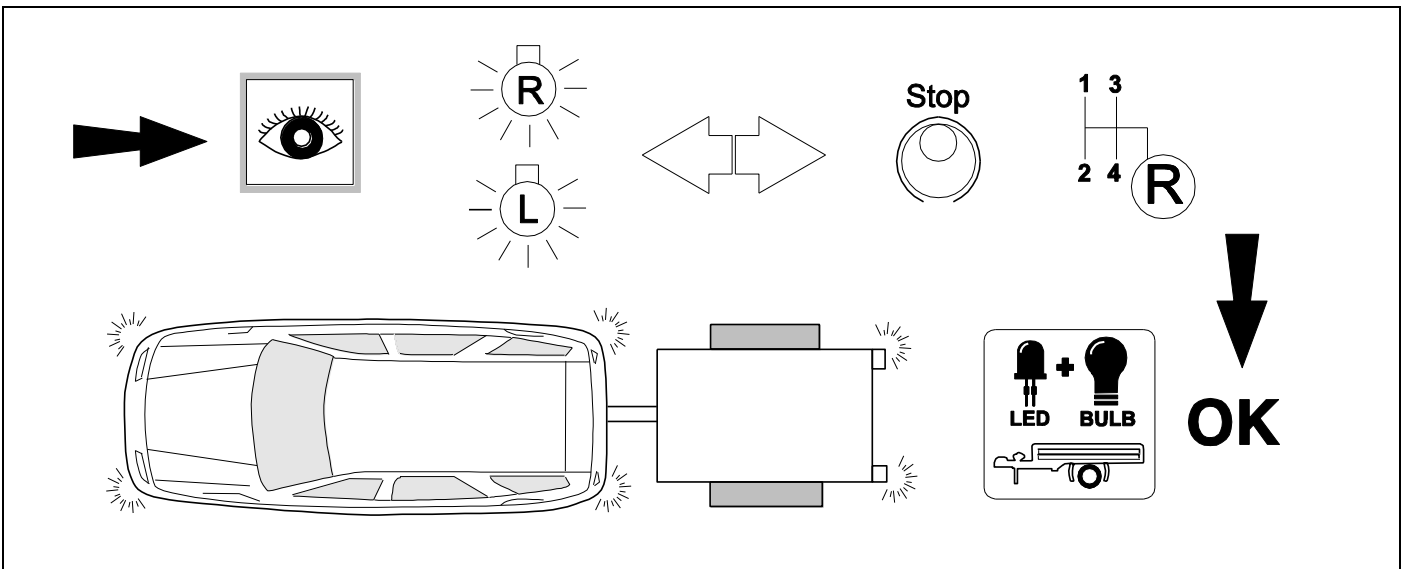


21 CODING

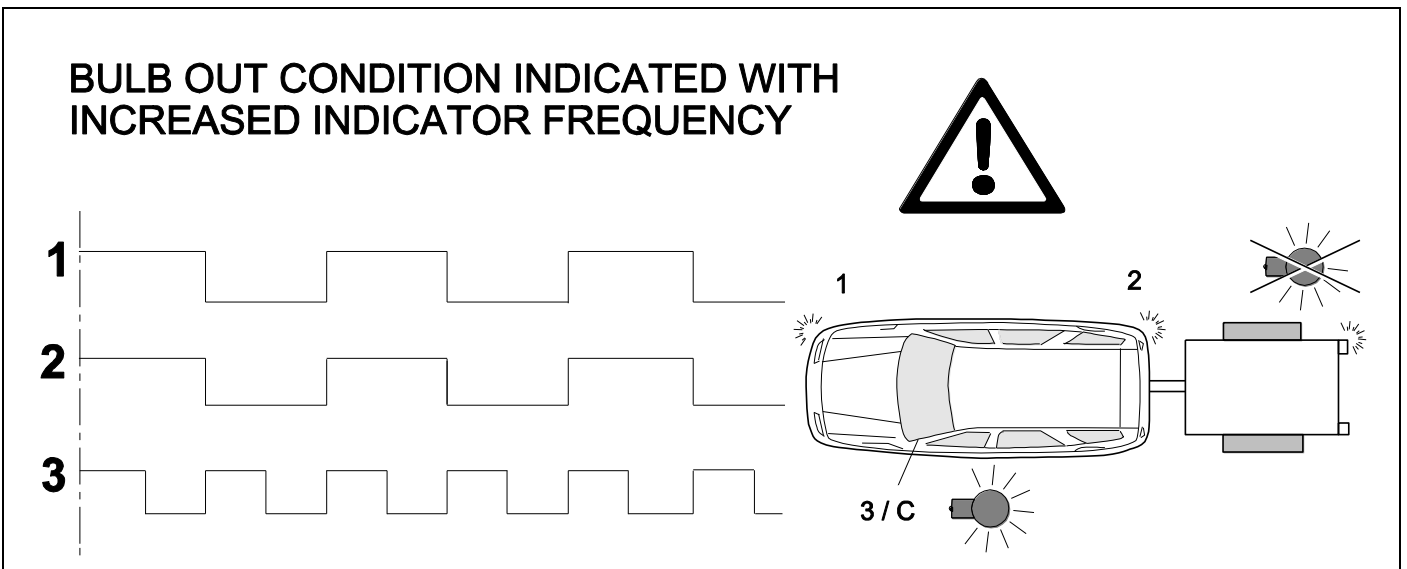
Optional only for PDC deactivation



22 CHECK ALL LIGHTING FUNCTIONS

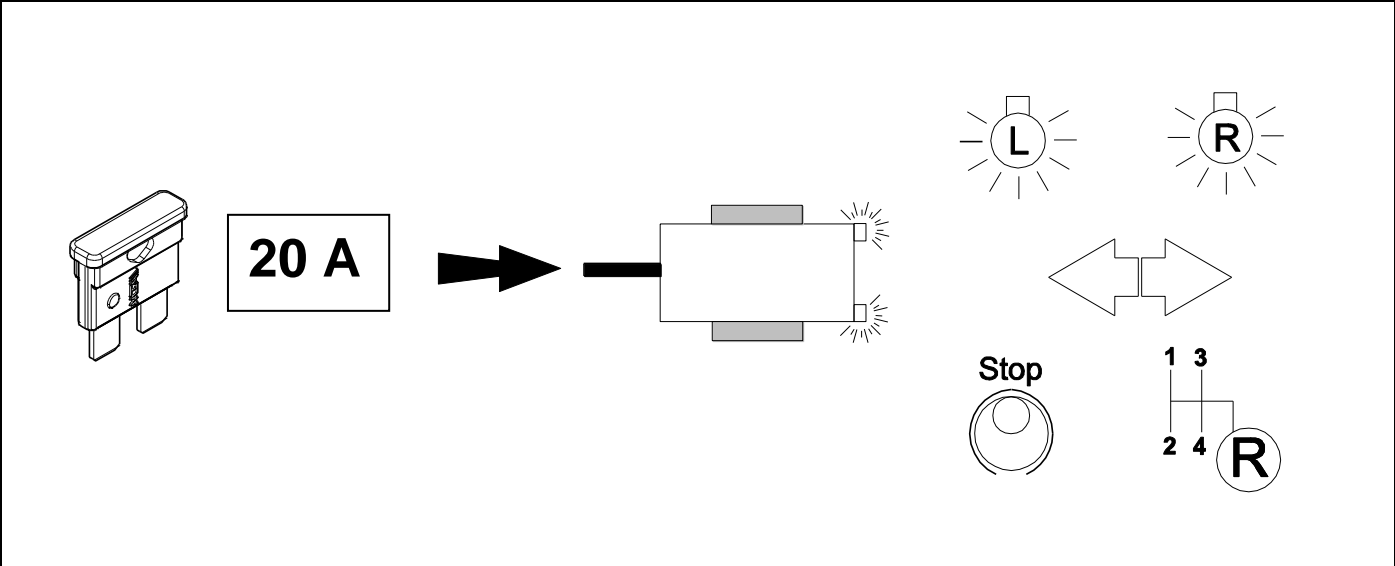


23 CHECK BULB OUT DETECTION

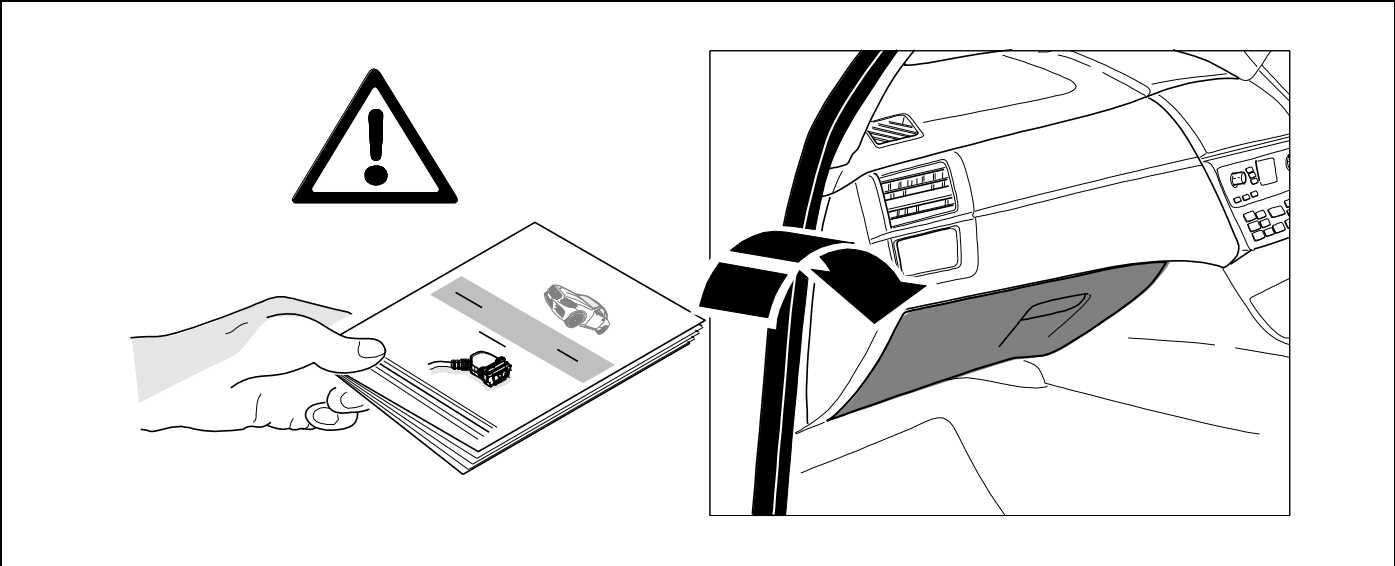


24

⇒ 16



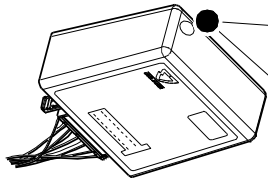
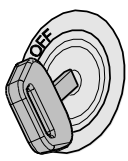
25



Subject to change in terms of construction, equipment and colour, and may contain errors.
 The information and illustrations are non-binding.

Status LED for self-diagnosis

Operation support

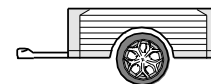
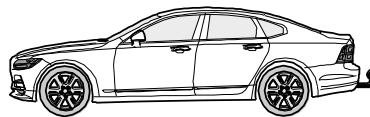
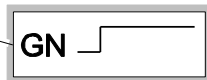
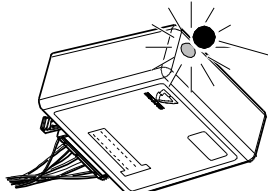


No CAN-Data =

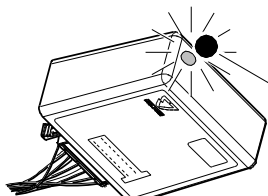
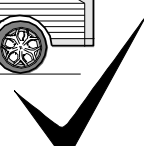


Standby / Sleepmode

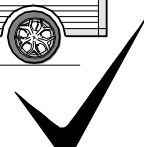
Ignition OFF



Ignition ON

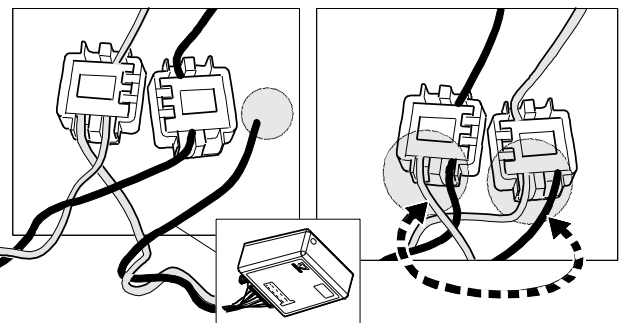
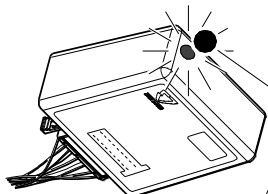


Ignition ON

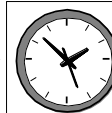
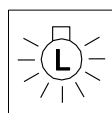
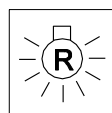
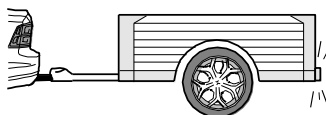


Failure support

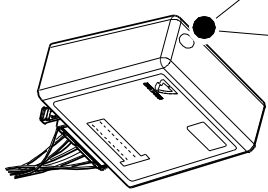
Check CAN-Data Wire



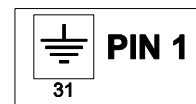
Ignition ON



1x max 5 min.



oder / or



Ignition ON

