
KIA CERATO

Sedan

(2013-ON)

Part number T2K618

Maximum towing capacity 1200 kg

Maximum ball load 75 kg

Bar weight 17 kg

Fitting Instructions

Warning:

Safety First: Always use correct safety equipment.

This towbar is NOT to be drilled, cut, welded or modified.

Check the surrounding area before drilling into chassis or body panels for fuel lines, wiring harnesses and other components that may be a hazard.

General:

Before fitting this towbar read fitting instructions and check installation hardware is correct.

Check that the towbar is suitable for the vehicle and be wary of any changes to the vehicle design that may conflict with the fitting of this towbar.

After drilling, blow any filings clear, remove any swarf and treat exposed metal with a rust inhibitor.

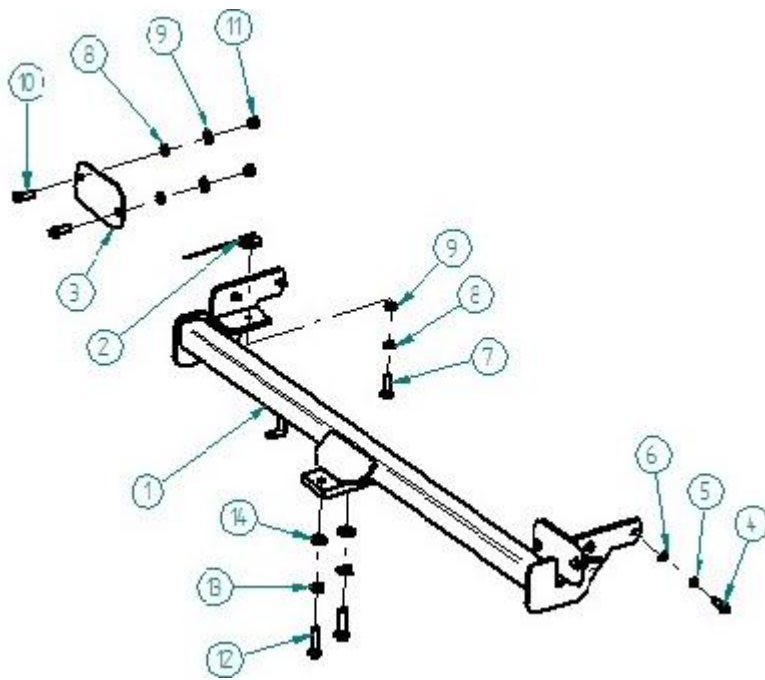
If this vehicle requires a bumper cut out, please check to make sure that you measure twice and check twice before cutting any panels as some bumper profiles can change.

If you are not sure then ask your towbar supplier.

Tighten all bolts as specified on the last page.



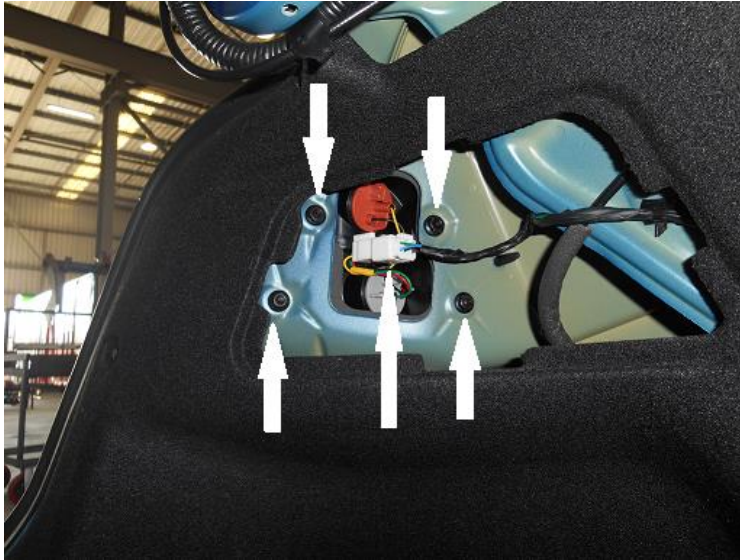
KIA CERATO SEDAN (2013-ON)



Scheme1

T2K618 Hardware KIT	
Item	Quantity
1. Towbar	1
2. Nut plate	2
3. Plate	2
4. M10 x 35 x 125 pitch bolt	4
5. M10 spring washer	4
6. M10 flat washer	4
7. M12 x 40 x 15 pitch bolt	2
8. M12 spring washer	6
9. M12 flat washer	6
10. M12 x 30 x 15 pitch bolt	4
11. M12 x 15 nut	4
12. M16 x 50 bolt	2
13. M16 spring washer	2
14. M16 flat washer	2
15. L269C tongue	1
16. Compliance plate	1
17. Door sticker	1

1.



Pic.1

1.1 Remove tail light plug as shown on Pic.1

1.2 Remove four tail light nuts as shown on Pic.1

1.3 Remove tail lights by pulling them straight out

2.



Pic.2

2.1 Remove scrivenets from passenger side as shown on Pic.2 (if reversing camera fitted)

2.2 Undo reversing camera sensor plug (if reversing camera fitted)

3.



Pic.3

3.1 Remove bumper bar scrivets as shown on Pic.3

3.2 Remove scrivets from rear passenger and driver side mud guard

4.



Pic.4

4.1 Remove the under tray from left rear end as shown on Pic.4

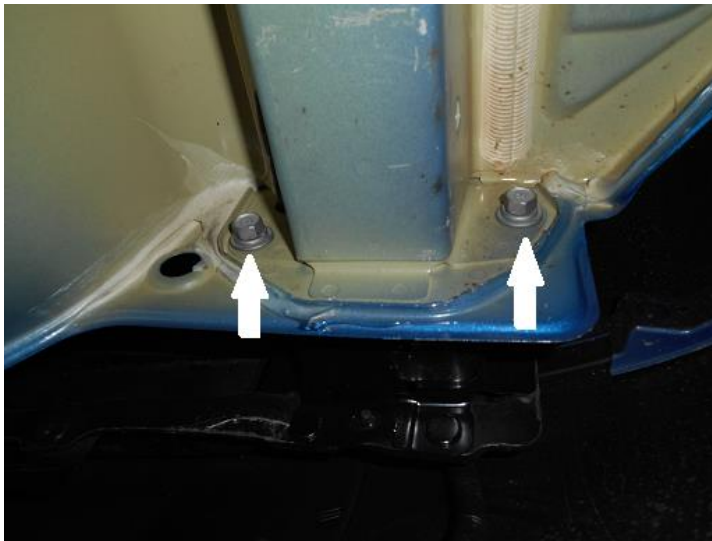
5.



Pic.5

5.1 Remove scrivet and screw as shown on Pic.5 from both side

6.

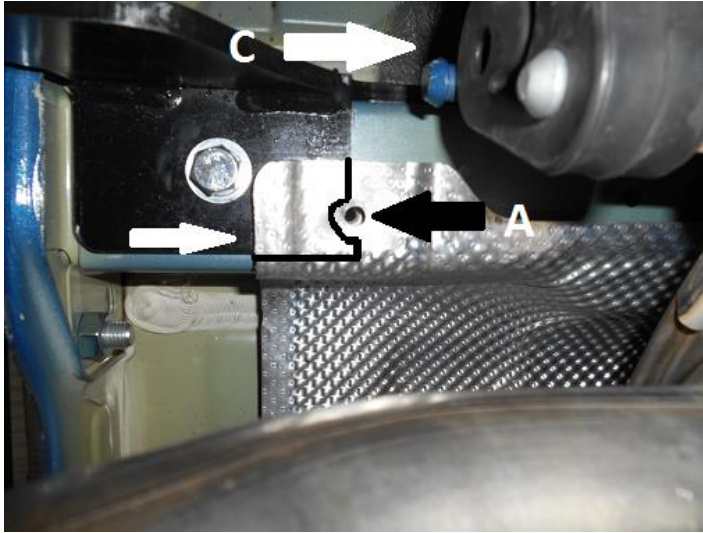


Pic.6

6.1 Remove impact beam bolts as shown on Pic.6 from both side

6.2 Remove bumper bar with impact beam, if needed use assistance

7.

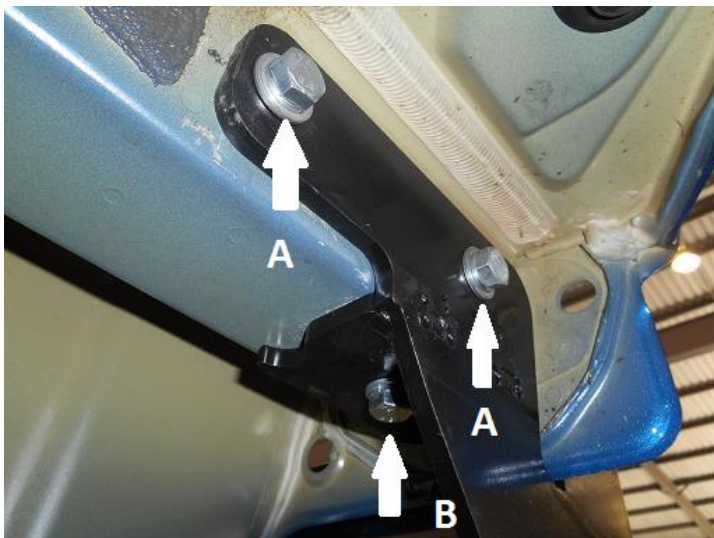


Pic.7

7.1 Remove the exhaust rubber C as shown on Pic.7

7.2 Remove heat guard bolt A as shown on Pic.7

8.



Pic.8

8.1 Lift the towbar up against the chassis rail and insert bolts A as shown on Pic.8 and Scheme 1 and tighten bolts loosely

8.2 Using the towbar as a guide mark the hole for bolt B and drill a hole into the chassis rail (both sides)

9.



Pic.9

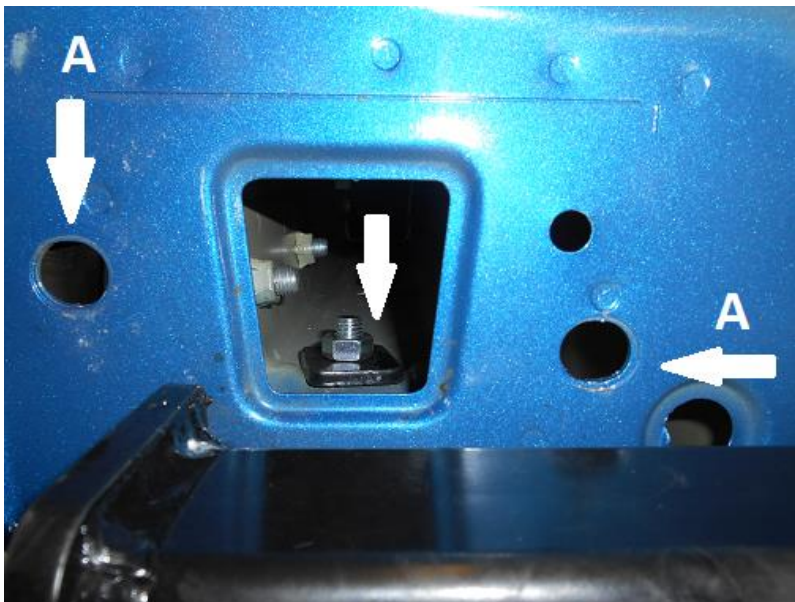
9.1 Mark the heat guard like shown on Pic.9

9.2 Remove heat guard

9.3 Cut the heat guard like shown on Pic.9

9.4 Refit heat guard

10.



Pic.10

10.1 Tighten bolts with the torque wrench.

10.2 Use impact beam bolt holes A as shown on Pic.10 to cover the chassis rail holes with the Plate as shown on Scheme 1 and Pic.10

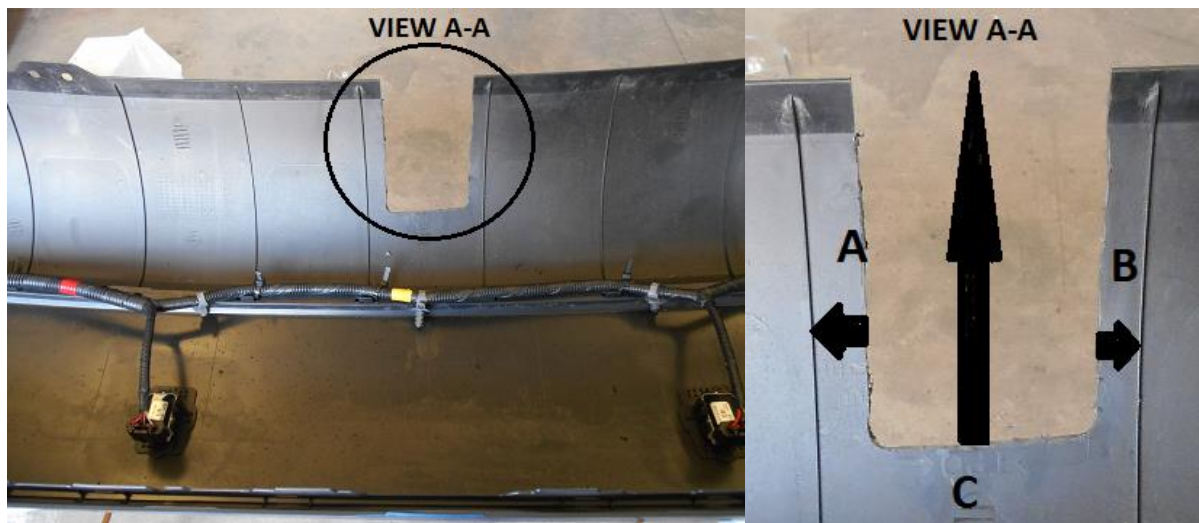
11.



Pic.11

11.1 Remove both impact beam scrivets as shown on Pic.11 and discard the impact beam

12.



Pic.12

12.1 Use zip ties to fasten reversing camera sensor wiring loom to the bumper bar by using upper and lower bumper bar mounting points

12.2 Make a cut out to the bumper with given measurements **A= 20 MM; B=15 MM; C=135 MM**

Measurements are given from inside of the bumper bar and cut out is not in the centre of ribs

13.

13.1 Fit supplied compliance plate to the towbar and door sticker inside of the driver's door pillar.

13.2 Refit the bumper bar, under tray and tail lights in reverse order

13.3 Mount the lug mount to the towbar

Torque table for bolt tightening

Metric GRADE 8.8	UNC GRADE 8
M6 - 12.5 Nm	3/8 - 50 Nm
M8 - 30 Nm	1/2 - 125 Nm
M10 - 60 Nm	5/8 - 245 Nm
M12 - 103 Nm	
M14 - 167 Nm	
M16 - 270 Nm	