
MAZDA 3

Sedan/ Hatch

02/2014-ON

Part number T2M625

Maximum towing capacity 1200 kg

Maximum ball load 90 kg

Bar weight 19 kg



Fit with wiring harness part No. xxxxxx

Fitting Instructions

Warning:

Safety First: Always use correct safety equipment.

This towbar is NOT to be drilled, cut, welded or modified in any way.

Check the surrounding area before drilling into chassis or body panels for fuel lines, wiring harnesses and other components that may be a hazard.

General:

Before fitting this towbar read fitting instructions and check installation hardware is correct.

Check that the towbar is suitable for the vehicle and be wary of any changes to the vehicle design that may conflict with the fitting of this towbar.

After drilling, blow any filings clear, remove any swarf and treat exposed metal with a rust inhibitor.

If this vehicle requires a bumper cut out, please check to make sure that you measure twice and check twice before cutting any panels as some bumper profiles can change.

If you are not sure then ask your towbar supplier.

Tighten all bolts as specified on the last page.

1.

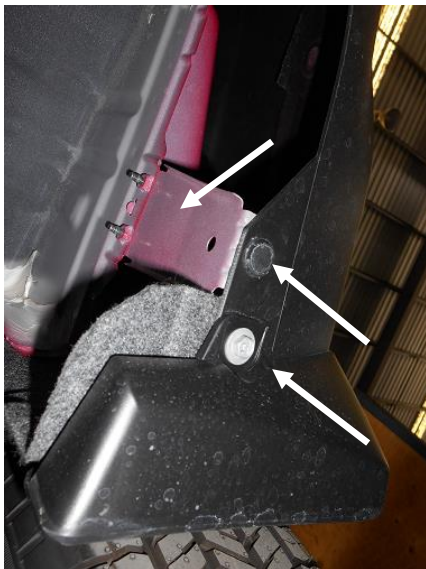


Pic.1

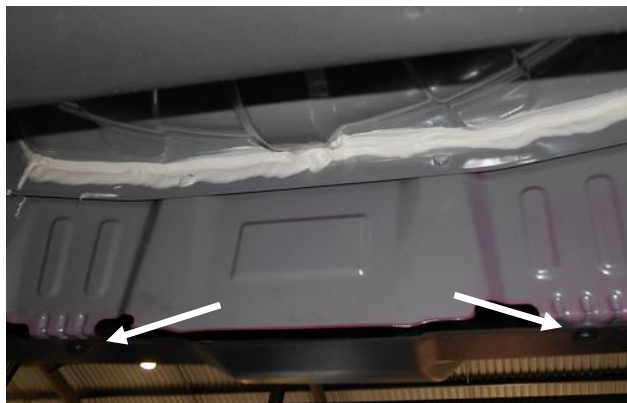
1.1 Undo taillight by undoing nuPic.1

1.2 Remove plastic wheel well trim by pulling it and undo screw as shown on Pic.2

2.



Pic.3



Pic.4

2.2 Remove plastic scrivenets and screws as shown on Pic.3 and Pic.4

3.



Pic.5

3.1 Undo screw as shown on Pic.5

3.2 Remove bumper bar

4.



Pic.6

4.1 Remove and impact beam as shown on Pic.6

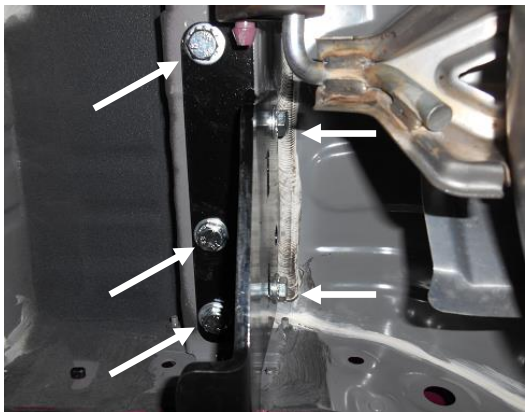
5.



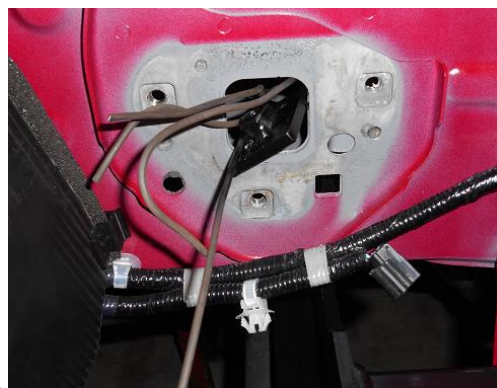
Pic.7

5.1 Undo and discard towing loop as shown on Pic.7

6.



Pic.8.1



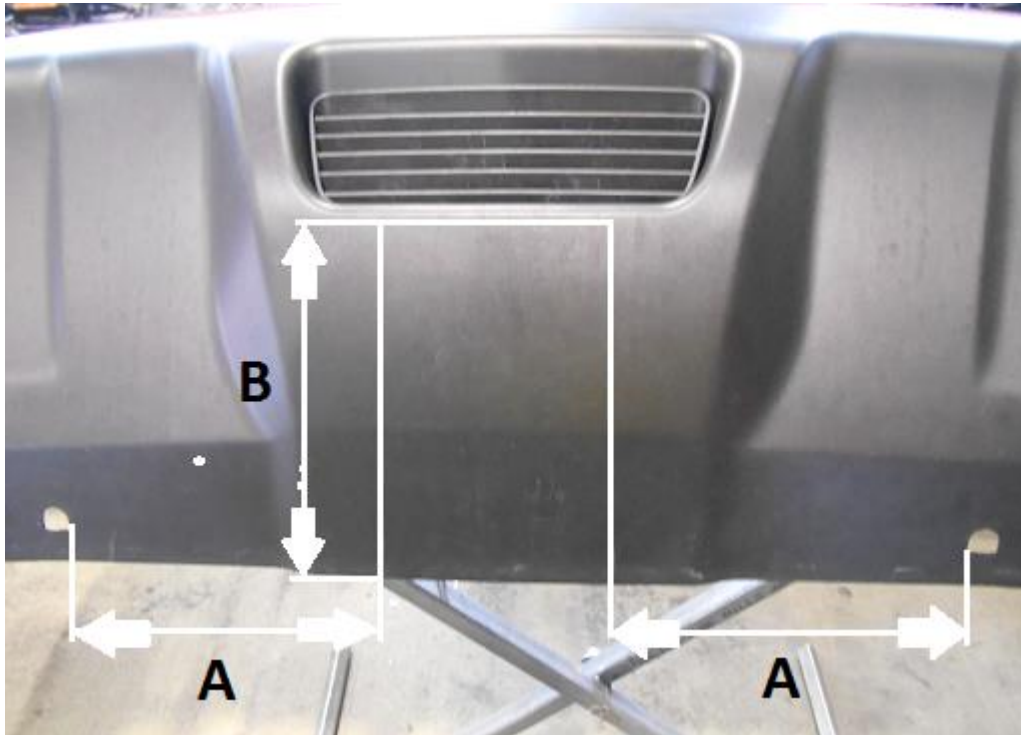
Pic.8.2

5.1 Slide the towbar between the chassis rails and insert fasteners as shown on Pic.8.1 and Scheme 1

5.2 Use supplied nut plates for the passenger side as shown on Pic.8.2 and Scheme 1

5.3 Tighten all bolts as specified in torque table

7.



Pic.8

(This vehicle requires a bumper cut out, please check to make sure that you measure twice and check twice before cutting any panels as some bumper profiles can change)

7.1 **A**- 145 mm; **B** – 155 mm make the bumper cut with given measurements, use the holes on the bottom of the bumper bar as a guide as shown on Pic.8)

8.

8.1 Fit supplied compliance plate to the towbar and door sticker inside of the driver's door pillar

8.2 Refit bumper bar, reversing sensor, exhaust rubber, bottom plastic covers and wheel well plastic covers in reverse order.

8.3 Mount the ball mount to the towbar

Torque table for bolt tightening

Metric GRADE 8.8	UNC GRADE 8
M6 – 12.5 Nm	3/8 – 50 Nm
M8 – 30 Nm	1/2 - 125 Nm
M10 – 60 Nm	5/8 – 245 Nm
M12 – 103 Nm	
M14 – 167 Nm	
M16 – 270 Nm	