
SUBARU IMPREZA

HATCH

01/2016-ON

Part number T2S646

Maximum towing capacity 1200 kg

Maximum ball load 120 kg

Bar weight 12 kg



Fit with wiring harness part No. xxxxxx

Fitting Instructions

Warning:

Safety First: Always use correct safety equipment.

This towbar is NOT to be drilled, cut, welded or modified in any way.

Check the surrounding area before drilling into chassis or body panels for fuel lines, wiring harnesses and other components that may be a hazard.

General:

Before fitting this towbar read fitting instructions and check installation hardware is correct.

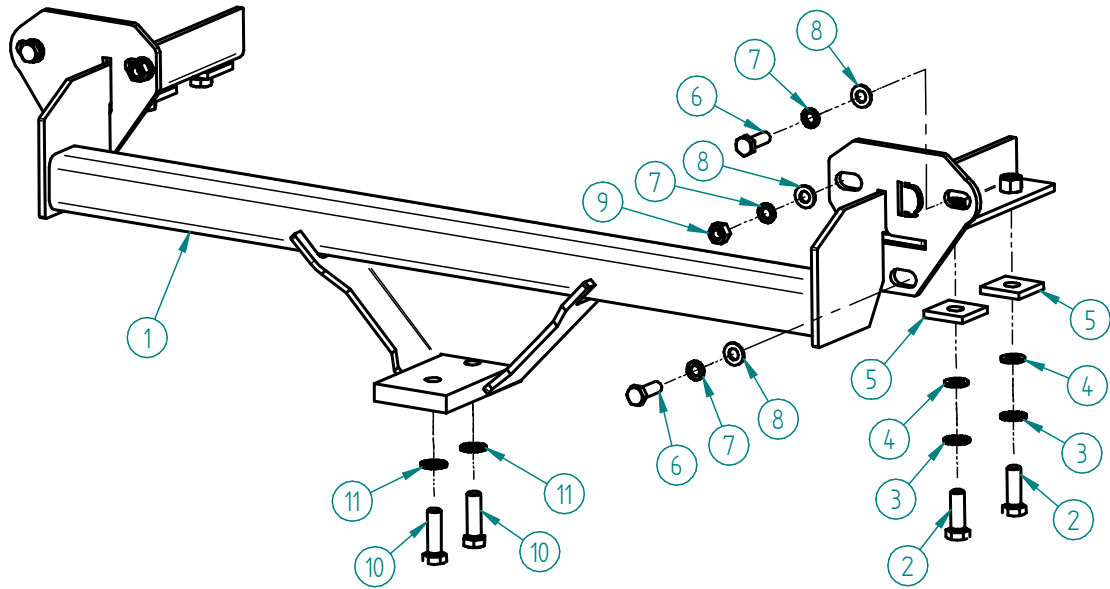
Check that the towbar is suitable for the vehicle and be wary of any changes to the vehicle design that may conflict with the fitting of this towbar.

After drilling, blow any filings clear, remove any swarf and treat exposed metal with a rust inhibitor.

If this vehicle requires a bumper cut out, please check to make sure that you measure twice and check twice before cutting any panels as some bumper profiles can change.

If you are not sure then ask your towbar supplier.

Tighten all bolts as specified on the last page.



Scheme1

| T2S646 Hardware KIT | |
|-------------------------------|----------|
| Item | Quantity |
| 1. Towbar | 1 |
| 2. M12 x 35 x 1.5 pitch bolt | 4 |
| 3. M12 shakeproof washer | 4 |
| 4. M12 flat washer | 4 |
| 5. Plate | 4 |
| 6. M10 x 30 x 1.25 pitch bolt | 4 |
| 7. M10 shakeproof washer | 6 |
| 8. M10 flat washer | 6 |
| 9. M10 x 1.25 pitch nut | 2 |
| 10. M16 x 40 x 2 pitch bolt | 2 |
| 11. M16 spring washer | 2 |
| 12. L268C lug | 1 |
| 13. Compliance plate | 1 |
| 14. Door sticker | 1 |

1.



Pic.1

1.1 Remove tail lights by undoing two screws as shown on Pic.1 and pull them to the side

1.2 Remove tail light plugs

2.



Pic.2.1



Pic.2.2

2.1 Remove screw from the wheel arch as shown on Pic.2.1

2.2 Remove plastic scrivets from the bottom corner of the bumper bar as shown on Pic.2.2

2.3 Remove plastic scrivets from the bottom centre of the bumper bar

2.4 Remove bumper bar

2.5 Remove and discard the impact beam

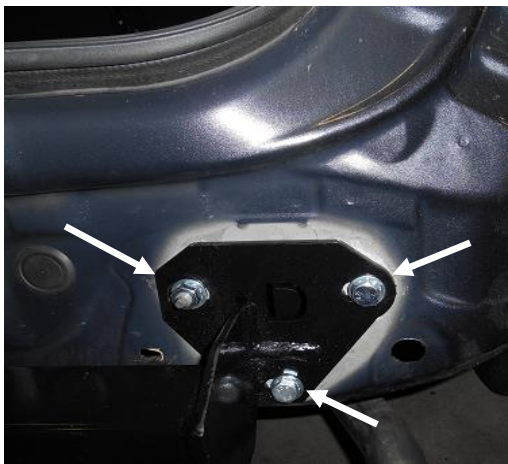
3.



Pic.3

3.1 Clear the chassis insert panel as shown on Pic.3

4.



Pic.4.1



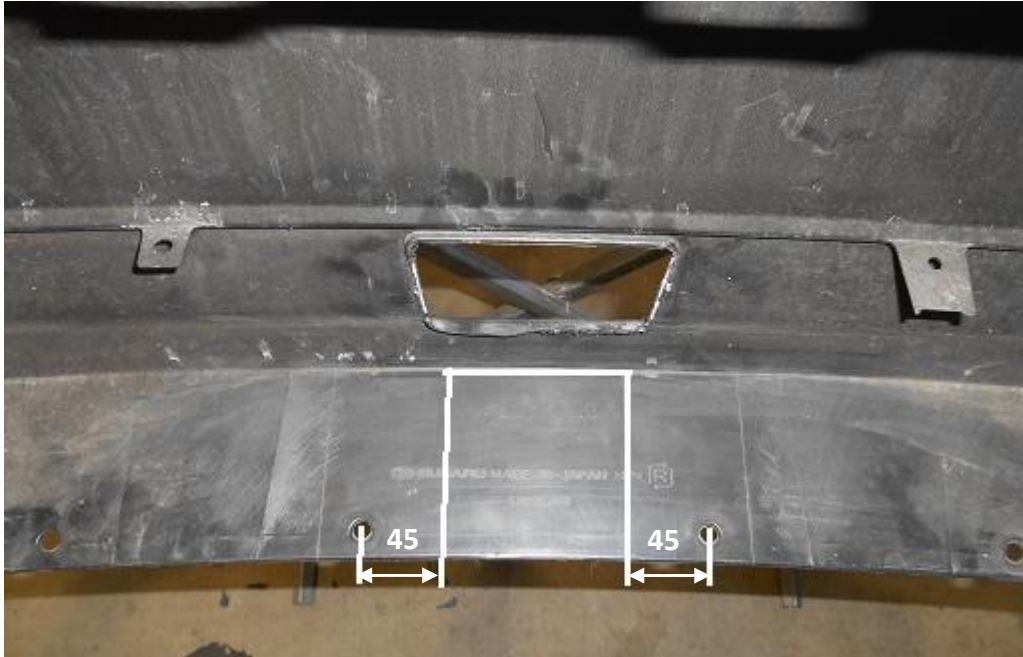
Pic.4.2

4.1 Slide towbar endplates into the chassis rails

4.2 Insert fasteners as shown on Pic.4.1, Pic.4.2 and Scheme 1 (insert all fasteners before tightening them)

4.3 Tighten all bolts as specified on the last page

5.



Pic.5

5.1 Measure from the holes towards the centre of the bumper bar 45 mm as shown on Pic.5

5.2 Mark and cut the bumper bar (fog light bracket does not have to be cut off)

6.

6.1 Fit supplied compliance plate to the towbar and door sticker inside of the driver's door pillar

6.2 Refit bumper bar, reversing sensor and tail lights in reverse order

6.3 Mount L268C ball mount to the towbar

Torque table for bolt tightening

| Metric GRADE 8.8 | UNC GRADE 8 |
|-------------------------|--------------------|
| M6 – 12.5 Nm | 3/8 – 50 Nm |
| M8 – 30 Nm | 1/2 - 125 Nm |
| M10 – 60 Nm | 5/8 – 245 Nm |
| M12 – 103 Nm | |
| M14 – 167 Nm | |
| M16 – 270 Nm | |