
FORD TRANSIT

CUSTOM

12/2013-ON

Part number T4F622

Maximum towing capacity 2500 kg

Maximum ball load 250 kg

Bar weight 17.5 kg



Fit with wiring harness part No. xxxx

Fitting Instructions

Warning:

Safety First: Always use correct safety equipment.

This towbar is NOT to be drilled, cut, welded or modified in any way.

Check the surrounding area before drilling into chassis or body panels for fuel lines, wiring harnesses and other components that may be a hazard.

General:

Before fitting this towbar read fitting instructions and check installation hardware is correct.

Check that the towbar is suitable for the vehicle and be wary of any changes to the vehicle design that may conflict with the fitting of this towbar.

After drilling, blow any filings clear, remove any swarf and treat exposed metal with a rust inhibitor.

If this vehicle requires a bumper cut out, please check to make sure that you measure twice and check twice before cutting any panels as some bumper profiles can change.

If you are not sure then ask your towbar supplier.

Tighten all bolts as specified on the last page.

1.



Pic.1

1.1 Remove and discard bolts from both sides as shown on Pic.1

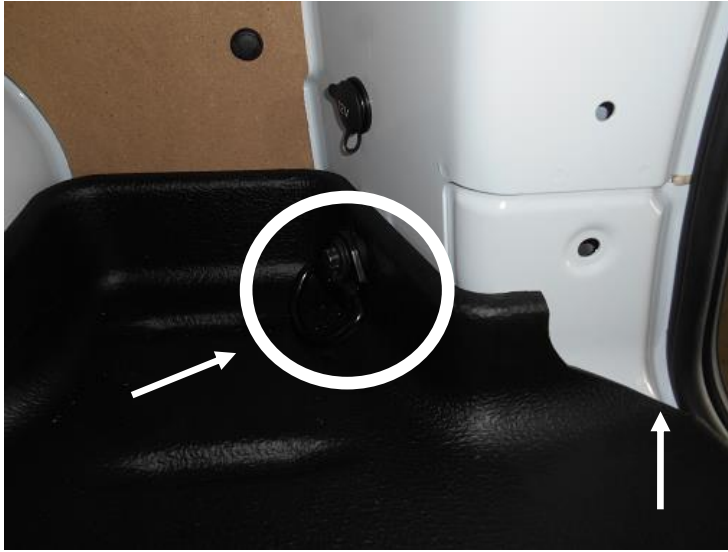
2.



Pic.2

2.1 Loosen bumper bracket bolts from both sides as shown on Pic.2

3.



Pic.3

3.1 Undo tie down loops from both sides and lift the floor matt edge up as shown on Pic.3

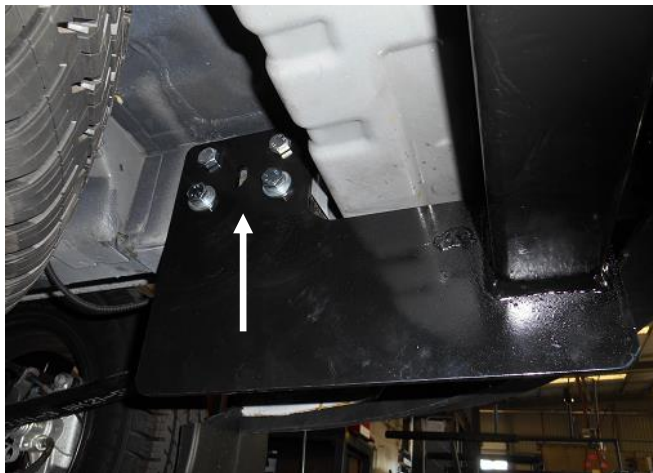
4.



Pic.4

4.1 Drill a hole through the floor panel by using holes as guides as shown on Pic.4 (driver and passenger side)

5.

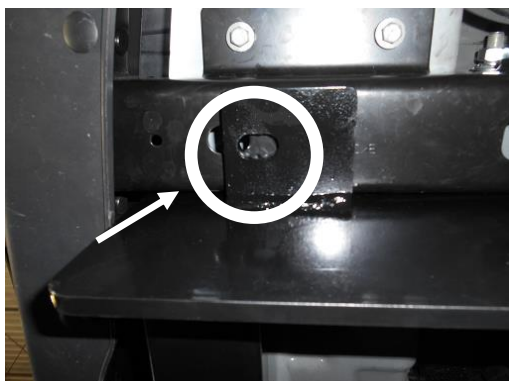


Pic.5

5.1 Lift the towbar up between chassis rail and insert bolt as shown on Pic.5

6.

(Driver side)



Pic.6.1



Pic.6.2

6.1 Mark and drill the hole into the bumper bracket as shown on Pic.6.1 (necessary only when the drill bit did not reach through the bracket when the hole was drilled through the floor panel shown on Pic.4)

6.2 Insert the bolts as shown on Pic.6.2

6.3 Tighten all bolts as specified on the torque table

7.

7.1 Fit supplied compliance plate to the towbar and door sticker inside of the driver's door pillar.

7.2 Tighten bumper bracket bolts and tie down loops

7.3 Mount the ball mount to the towbar

Torque table for bolt tightening

Metric GRADE 8.8	UNC GRADE 8
M6 – 12.5 Nm	3/8 – 50 Nm
M8 – 30 Nm	1/2 - 125 Nm
M10 – 60 Nm	5/8 – 245 Nm
M12 – 103 Nm	
M14 – 167 Nm	
M16 – 270 Nm	