

# FITTING INSTRUCTIONS



Colorado 7/Trailblazer/Mu-x 11/13-on – T7H731

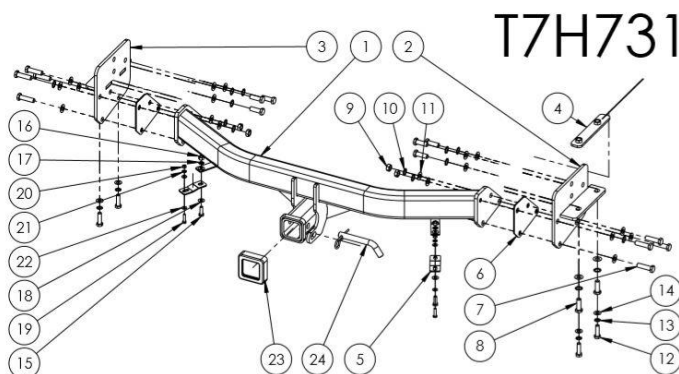
<b>Max Towing Capacity:</b> 3500kg	<b>Towbar Weight:</b> 20kg
<b>Max Ball Load:</b> 350kg	<b>Wiring Harness Part #:</b> Holden - 750024EJ      Isuzu – UNT285



## Tools Required:

- Spanners, Sockets, Torque Wrench, Air saw

Kit Contents					
Item No.	Description	Qty	Item No.	Description	Qty
1.	Main Bar Subassembly	1	14.	M10 Flat Washer	4
2.	End Plate DS	1	15.	M8x1.25x25 Bolt	2
3.	End Plate PS	1	16.	M8x1.25 Nut	2
4.	Nut Plate on Wire	1	17.	M8 Shake Proof Washer	2
5.	Bumper Connector Plate	2	18.	M8 Flat Washer	4
6.	Spacer 3mm	2	19.	M6x1x25 Bolt	2
7.	M12x1.25x45 Bolt	8	20.	M6x1 Nut	2
8.	M12x1.25x35 Bolt	8	21.	M6 Shake Proof Washer	2
9.	M12x1.25 Nut	6	22.	M6 Flat Washer	4
10.	M12 Shake Proof Washer	16	23.	Hitch Collar Cover	1
11.	M12 Flat Washer	22	24.	Pin & Clip	1
12.	M10x1.25x35 Bolt	4	...	D-Shackles	2
13.	M10 Shake Proof Washer	4	...	Compliance Sticker	1



## Warning:

- This product is for towing purposes only and must only be loaded as shown in your vehicle Owners Manual.
- This towbar is NOT to be drilled, cut, welded or modified in any way.
- Check behind chassis rail and body panels before drilling to ensure no hazards are present

## General:

- Before fitting this towbar read fitting instructions and check installation hardware is correct.
- Check that the towbar is suitable for the vehicle and be wary of any changes to the vehicle design that may conflict with the fitting of this towbar.
- After drilling, blow any filings clear, remove any swarf and treat exposed metal with a rust inhibitor.
- If this vehicle requires a bumper cut out, please check to make sure that you measure twice and check twice before cutting any panels as some bumper profiles can change. If you are not sure, then please ask your towbar supplier

# FITTING INSTRUCTIONS

Colorado 7/Trailblazer/Mu-x 11/13-on – T7H731

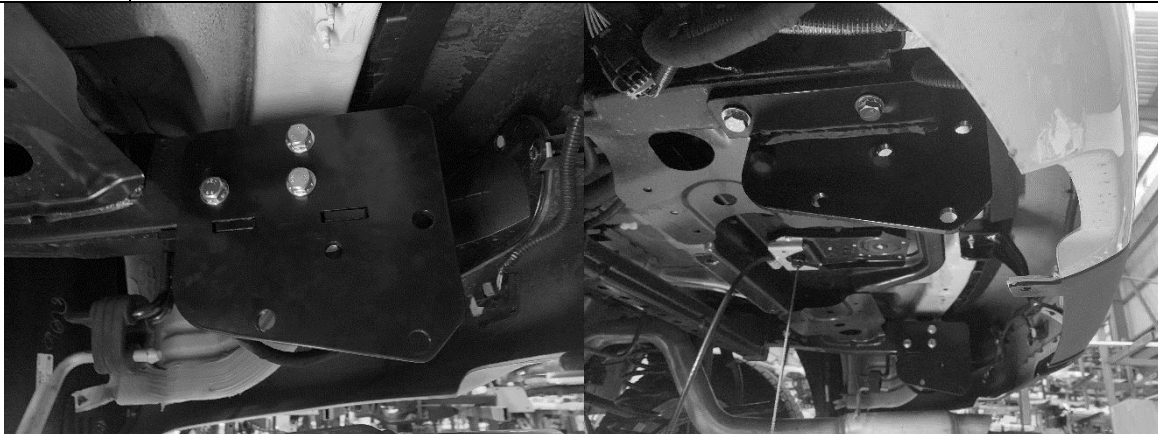


## Step 1 | Remove Shipping Hooks and Bumper Supports



Instructions	Tools	Torque Spec
Remove the factory shipping hook from the chassis rail and also the 3 bumper supports. These parts and the corresponding hardware can be discarded of. Drop the spare tire to make space for fitting the bumper.	Spanners, Sockets	NA

## Step 2 | Fit Towbar End Plates



Instructions	Tools	Torque Spec
Loosely secure both towbar end plates to the chassis. <ul style="list-style-type: none"> <li>- Using 3x M12x35 Bolts, Flat and Shake Proof Washers into the captive nuts in the side of each chassis rail</li> </ul> For Holdens: <ul style="list-style-type: none"> <li>- Using 2x M10 Bolts, Flat and Shake Proof Washers into the captive nuts in the bottom of each chassis rail</li> </ul> For Isuzus: <ul style="list-style-type: none"> <li>- Using 2x M10 Bolts, Flat and Shake Proof Washers into the captive nuts in the bottom of the Passenger side chassis rail</li> <li>- Using 2x M12x35 Bolts, Flat and Shake Proof Washers through the bottom of the Drivers side chassis rail, into the nut plate on wire.</li> </ul> Tighten the bolts to hold the end plates against the chassis rails. <b>DO NOT tighten to torque spec.</b>	Spanners, Sockets	NA

# FITTING INSTRUCTIONS

Colorado 7/Trailblazer/Mu-x 11/13-on – T7H731



Step 3	Determine if Spacers are Required		
<b>Instructions</b>	<b>Tools</b>	<b>Torque Spec</b>	
Position the Towbar centre section between the two end plates. If there is more than approx. 3mm clearance between the parts on each side, then spacers will be required. If the clearance is less than this, spacers will not be required between the parts.	NA	NA	

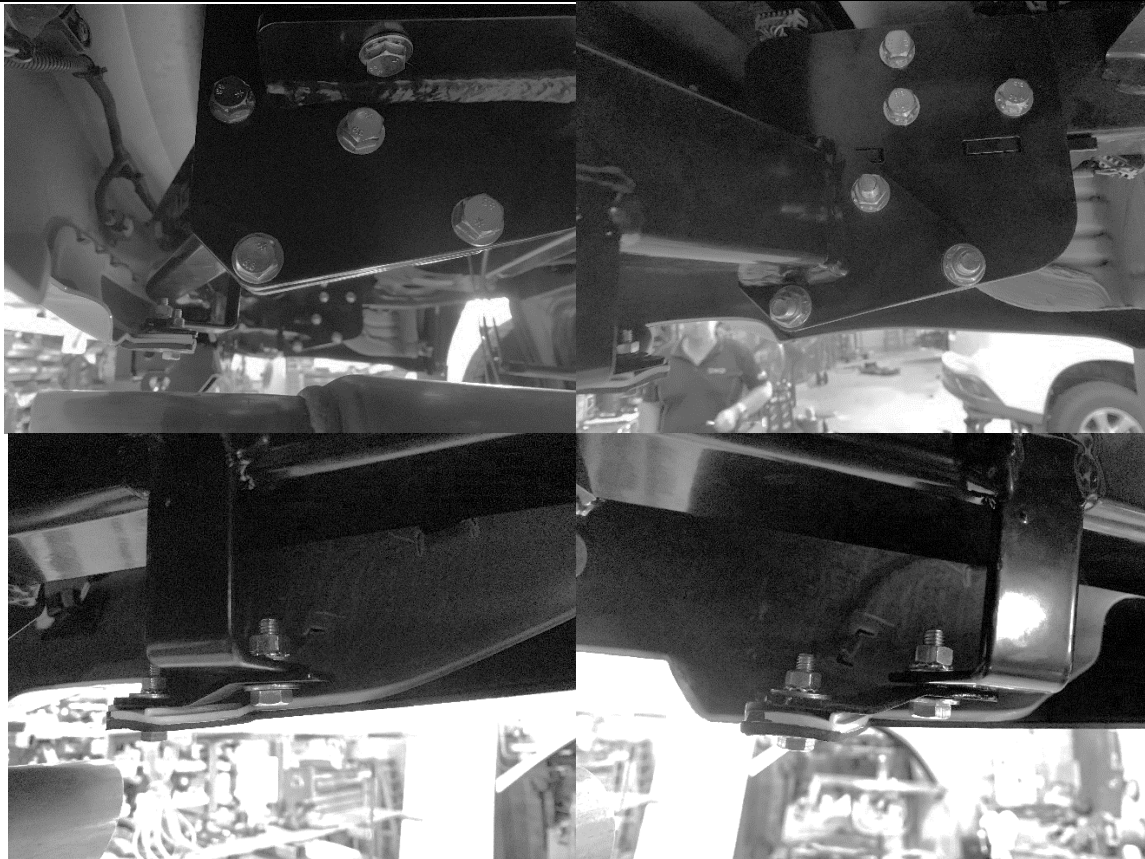
Step 4	Perform Bumper Cut		
<b>Instructions</b>	<b>Tools</b>	<b>Torque Spec</b>	
Carefully perform bumper cut as indicated in the diagram above. Please note this is only an indication, bumpers can vary between models and the fitter should take their own measurements.	Air Saw	NA	

# FITTING INSTRUCTIONS

Colorado 7/Trailblazer/Mu-x 11/13-on – T7H731



## Step 5 | Secure Towbar Centre Section and Support Bumper



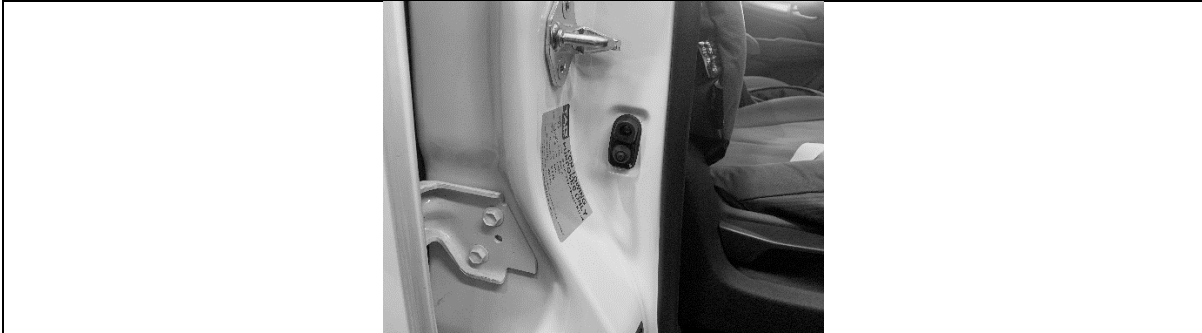
Instructions	Tools	Torque Spec
<p>Secure Towbar Centre section to the end plates:</p> <ul style="list-style-type: none"> <li>- Using 4x M12x45 Bolts, Shake Proof Washers, 3x M12 Nuts, 6x M12 Flat Washers, and 1x Spacer (if required) per side. Ensure centre section is right side up with the chain mount below the hitch receiver</li> </ul> <p>When all hardware is in place, tighten <b>all</b> bolts (including those into the chassis rails) to the torque specified.</p> <p>Support the bumper by fixing it to the towbar:</p> <ul style="list-style-type: none"> <li>- Using Bumper connector plates with M8 hardware on the towbar side and M6 Hardware on the bumper side</li> </ul> <p>Lift spare tire back into place.</p>	<p>Spanner, Sockets, Torque Wrench</p>	<p>M12 = 100Nm M10 = 60Nm M8 = 30Nm M6 = 12.5Nm</p>

# FITTING INSTRUCTIONS

Colorado 7/Trailblazer/Mu-x 11/13-on – T7H731



## Step 6 | Apply door sticker



Instructions	Tools	Torque Spec
Apply Towbar info label to the inside of the driver's side door Jam.	N/A	N/A



## WARRANTY STATEMENT

The manufacturer of TAG branded products, warrants your TAG Towbar for its full product life under the following conditions:

- You can show proof of purchase.
- The towbar has been correctly installed by a suitably qualified installer.
- The towbar has not been modified or abused in any way and has only been used for the purpose intended.
- The towbar was not fitted second hand to your vehicle.

The extent of this warranty includes materials and workmanship used in the manufacture of the towbar and is to the equivalent value of current, full replacement cost.

Nothing stated or implied in this warranty limits in any way, the statutory rights that you may have.

To make a claim visit the original installer in the first instance or, if you are unable to or are not satisfied with their help, then contact us directly by email at [warranty@tagtowing.com](mailto:warranty@tagtowing.com)