

# Fitting Instructions



SKU

PRODUCT

**T2H619**

**TAG Standard Duty Towbar  
to suit Holden Commodore  
(01/2013 - 10/2017)**



Scan for latest  
version of these  
instructions

## SPECIFICATIONS

- Towbar Class: Standard Duty
- Towing Capacity: 1600kg

## IN THIS GUIDE

- Fitment Instructions
- Torque Settings
- Warranty Info

# Towbar Fitting Instructions



## Step-By-Step Instructions

### Warning:

Safety First: Always use correct safety equipment.

This towbar is NOT to be drilled, cut, welded or modified in any way.

Check the surrounding area before drilling into chassis or body panels for fuel lines, wiring harnesses and other components that may be a hazard.

### General:

Before fitting this towbar read fitting instructions and check installation hardware is correct.

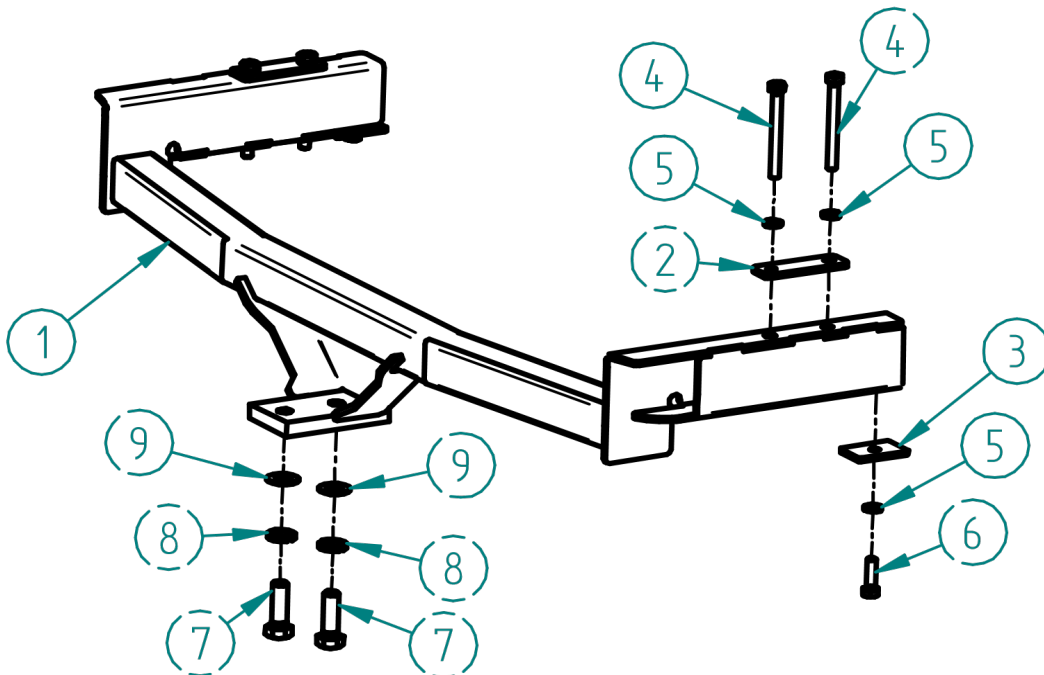
Check that the towbar is suitable for the vehicle and be wary of any changes to the vehicle design that may conflict with the fitting of this towbar.

After drilling, blow any filings clear, remove any swarf and treat exposed metal with a rust inhibitor.

If this vehicle requires a bumper cut out, please check to make sure that you measure twice and check twice before cutting any panels as some bumper profiles can change.

If you are not sure then ask your towbar supplier.

Tighten all bolts as specified on the last page.



*Scheme 1*

# Towbar Fitting Instructions



T2H619 Hardware KIT	
Item	Quantity
1. Towbar	1
2. Plate	2
3. Top Plate	2
4. M10 x 110 x 1.5 pitch bolt	4
5. M10 spring washer	6
6. M10 x 35 x 1.5 pitch bolt	2
7. M16 x 50 bolt	2
8. M16 spring washer	2
9. M16 flat washer	2
10. L269C tongue	1
11. Compliance plate	1
12. Door sticker	1

## 1. (Necessary ONLY when connecting wiring harness)



Pic.1.1



Pic.1.2

1.1 Remove plastic screw and pin from both sides as shown on Pic.1.1

1.2 Remove rear beaver panel inner boot trim, pull it upwards as shown on Pic.1.2

## 2. (Necessary ONLY when connecting wiring harness)



Pic.2.1



Pic.2.2

# Towbar Fitting Instructions



2.1 Remove three plastic pins from driver and passenger side as shown on Pic.2.1

2.2 Pull fabric cover away from driver and passenger side as shown on Pic.2.2

3.



Pic.3

3.1 Remove hex screws from wheel well as shown on Pic.3

4.



Pic.4.1



Pic.4.2

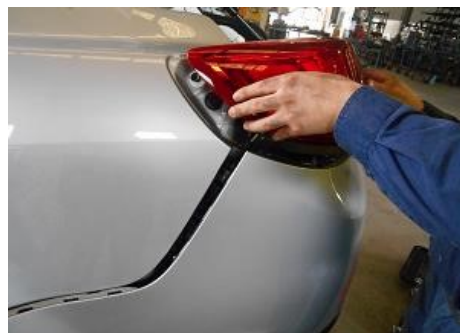
4.1 Remove plastic scrivets from underside of the Bumper as shown on Pic.4.1

4.2 Loosen bumper bar sides as shown on Pic.4.2

5. (Necessary ONLY when connecting wiring harness)



Pic.5.1



Pic 5.1

# Towbar Fitting Instructions



5.1 Undo tail light plug and remove three nuts as shown on Pic.5.1

5.2 Remove tail light as shown on Pic.5.1 (NB! Tail light clips on to the bumper bar)

5.3 Remove bumper bar (undo reversing sensor plug from passenger's side cavity of the bumper, if fitted as shown on Pic.5.1)

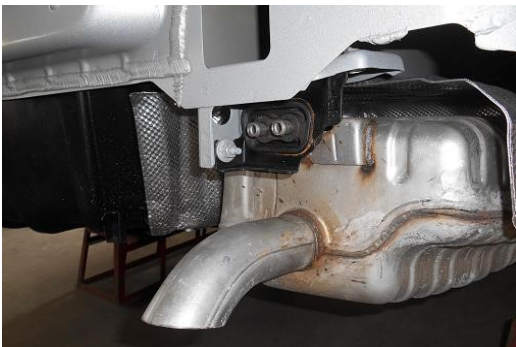
6.



Pic.6

6.1 Remove and discard foam as shown on Pic.6

7.



Pic.7

7.1 Remove muffler bracket by undoing the nut and bolt as shown on Pic.7 7.2 Remove heat shield

8.



Pic.8

8.1 Slide towbar endplates into chassis rail



# Towbar Fitting Instructions



9.



Pic.9.1



Pic.9.2

9.1 Remove and discard dust guard as shown on Pic.9.1

9.2 Align holes on the towbar and chassis rail and place Plate and fasteners as shown on Pic.9.2 and Scheme 1

9.3 Tighten bolts loosely

10.



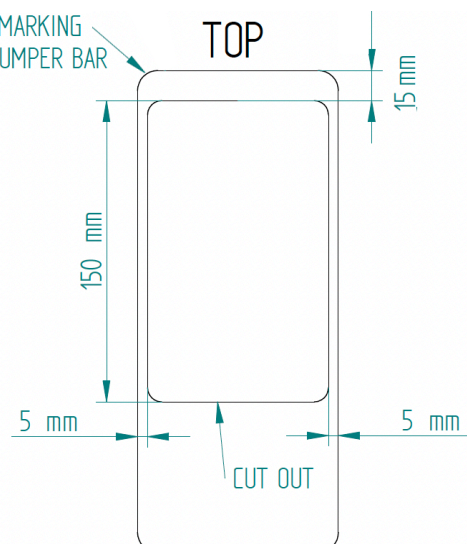
Pic.10

10.1 Place Top plate and fasteners under the chassis rail as shown on Pic.10 and Scheme 1

10.2 Tighten bolts as specified on the torque table

11.

CUT OUT MARKING  
ON THE BUMPER BAR



Scheme2

# Towbar Fitting Instructions



11.1 Make the bumper bar cut out by using Scheme 2

## 12.

12.1 Fit supplied compliance plate to the towbar and door sticker inside of the driver's door pillar.

12.2 Refit the bumper bar and tail lights in reverse order

12.3 Mount the lug mount to the towbar

## Torque Table for Bolt Tightening

<b>Metric GRADE 8.8</b>	<b>UNC GRADE 8</b>
M6 – 12.5 Nm	3/8 – 50 Nm
M8 – 30 Nm	1/2 – 125 Nm
M10 – 60 Nm	5/8 – 245 Nm
M12 – 103 Nm	
M14 – 167 Nm	

## **TAG Warranty Statement**

SWD warrants your TAG Towbar for its full product life under the following conditions:

- You can show proof of purchase.
- The towbar has been correctly installed by a suitably qualified installer.
- The towbar has not been modified or abused in any way and has only been used for the purpose intended.
- The towbar was not fitted second hand to your vehicle.

The extent of this warranty includes materials and workmanship used in the manufacture of the towbar and is to the equivalent value of current, full replacement cost.

Nothing stated or implied in this warranty limits in any way, the statutory rights that you may have.

To make a claim visit the original installer in the first instance or, if you are unable to or are not satisfied with their help, then contact us direct by phone on 1300 669122 or visit [www.swd.com.au](http://www.swd.com.au)