

Fitting Instructions



SKU

PRODUCT

T4D627

TAG Heavy Duty Towbar to suit Nissan X-TRAIL (12/2013 - on)



Scan for latest
version of these
instructions

SPECIFICATIONS

- Towbar Class: Heavy Duty
- Towing Capacity: 00kg

IN THIS GUIDE

- Fitment Instructions
- Torque Settings
- Warranty Info

Towbar Fitting Instructions



Step-By-Step Instructions

Warning:

Safety First: Always use correct safety equipment.

This towbar is NOT to be drilled, cut, welded or modified in any way.

Check the surrounding area before drilling into chassis or body panels for fuel lines, wiring harnesses and other components that may be a hazard.

General:

Before fitting this towbar read fitting instructions and check installation hardware is correct.

Check that the towbar is suitable for the vehicle and be wary of any changes to the vehicle design that may conflict with the fitting of this towbar.

After drilling, blow any filings clear, remove any swarf and treat exposed metal with a rust inhibitor.

If this vehicle requires a bumper cut out, please check to make sure that you measure twice and check twice before cutting any panels as some bumper profiles can change.

If you are not sure then ask your towbar supplier.

Tighten all bolts as specified on the last page.

1.



Pic.1



Pic.2

1.1 Remove hex screws as shown on Pic.1

1.2 Remove plastic wheel well trim by pulling it and undo screw as shown on Pic.2

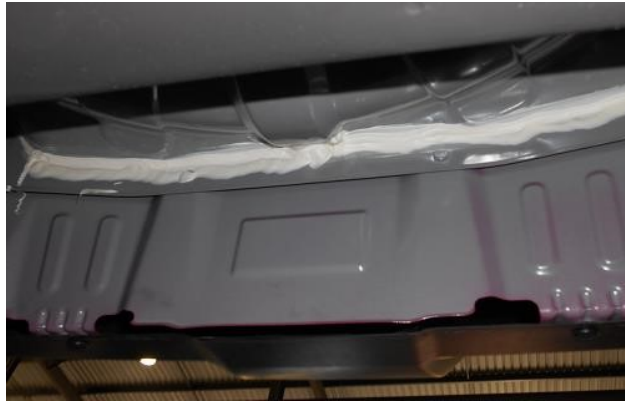
Towbar Fitting Instructions



2.



Pic.3



Pic.4

2.2 Remove plastic scrivets and screws as shown on Pic.3 and Pic.4

3.



Pic.5

3.1 Undo screw as shown on Pic.5

3.2 Remove bumper bar

Towbar Fitting Instructions



4.



Pic.6

4.1 Remove and impact beam as shown on Pic.6

5.



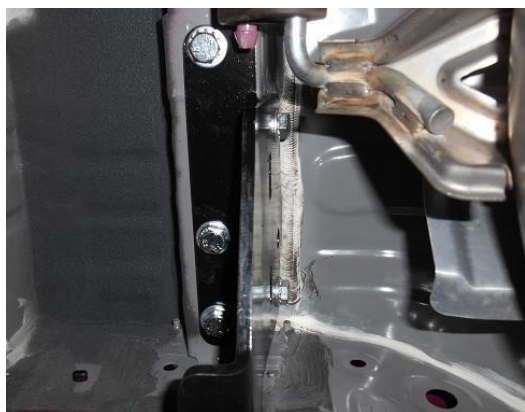
Pic.7

5.1 Undo and discard towing loop as shown on Pic.7

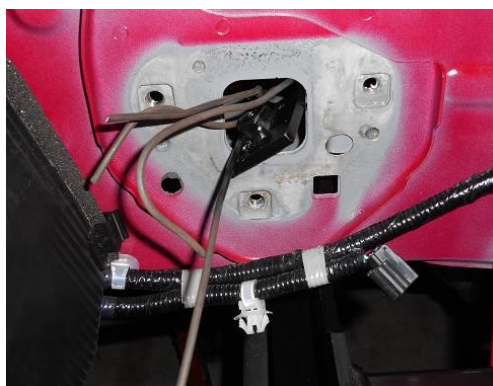
Towbar Fitting Instructions



6.



Pic.8.1



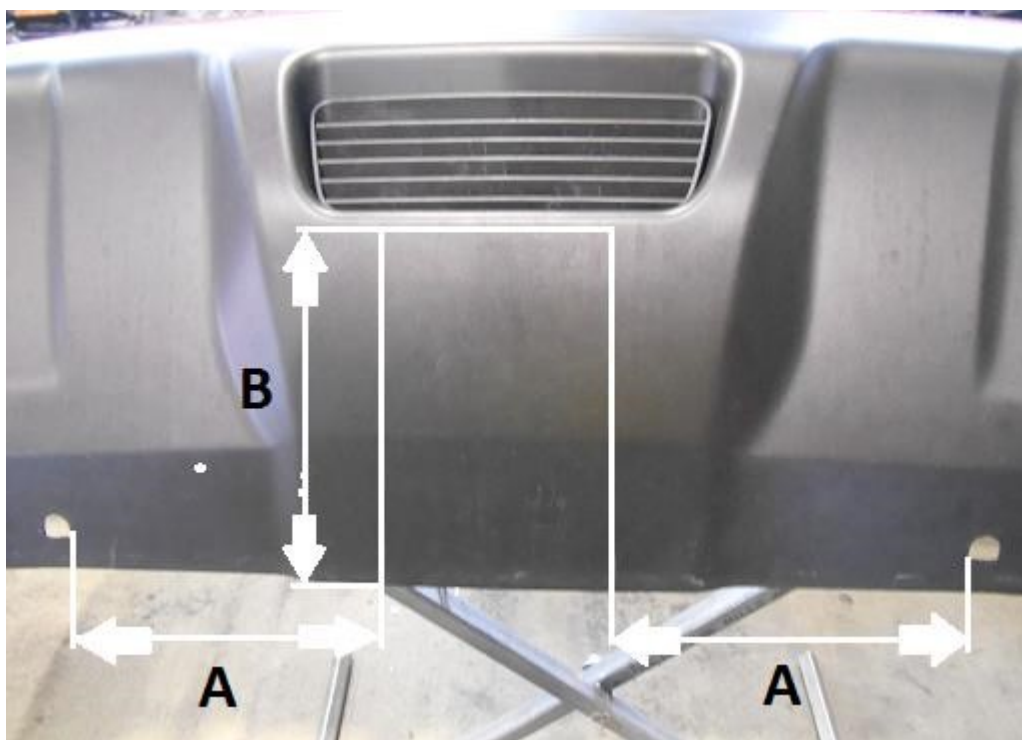
Pic.8.2

5.1 Slide the towbar between the chassis rails and insert fasteners as shown on Pic.8.1 and Scheme 1

5.2 Use supplied nut plates for the passenger side as shown on Pic.8.2 and Scheme 1 5.3

Tighten all bolts as specified in torque table

7.



Pic.8

(This vehicle requires a bumper cut out, please check to make sure that you measure twice and check twice before cutting any panels as some bumper profiles can change)

7.1 **A**- 145 mm; **B** – 155 mm make the bumper cut with given measurements, use the holes on the bottom of the bumper bar as a guide as shown on Pic.8)

Towbar Fitting Instructions



8.

8.1 Fit supplied compliance plate to the towbar and door sticker inside of the driver's door pillar

8.2 Refit bumper bar, reversing sensor, exhaust rubber, bottom plastic covers and wheel well plastic covers in reverse order.

8.3 Mount the ball mount to the towbar

Torque table for bolt tightening

Metric GRADE 8.8	UNC GRADE 8
M6 – 12.5 Nm	3/8 – 50 Nm
M8 – 30 Nm	1/2 – 125 Nm
M10 – 60 Nm	5/8 – 245 Nm
M12 – 103 Nm	
M14 – 167 Nm	
M16 – 270 Nm	

TAG Warranty Statement

SWD warrants your TAG Towbar for its full product life under the following conditions:

- You can show proof of purchase.
- The towbar has been correctly installed by a suitably qualified installer.
- The towbar has not been modified or abused in any way and has only been used for the purpose intended.
- The towbar was not fitted second hand to your vehicle.

The extent of this warranty includes materials and workmanship used in the manufacture of the towbar and is to the equivalent value of current, full replacement cost.

Nothing stated or implied in this warranty limits in any way, the statutory rights that you may have.

To make a claim visit the original installer in the first instance or, if you are unable to or are not satisfied with their help, then contact us direct by phone on 1300 669122 or visit www.swd.com.au