

# Fitting Instructions



SKU

PRODUCT

**T2K618**

**TAG Standard Duty Towbar  
to suit KIA Cerato (08/2013 -  
03/2018)**



T2K618

Scan for latest  
version of these  
instructions

## SPECIFICATIONS

- Towbar Class: Standard Duty
- Towing Capacity: 1200kg

## IN THIS GUIDE

- Fitment Instructions
- Torque Settings
- Warranty Info

# Towbar Fitting Instructions



## Step-By-Step Instructions

### Warning:

Safety First: Always use correct safety equipment.

This towbar is NOT to be drilled, cut, welded or modified in any way.

Check the surrounding area before drilling into chassis or body panels for fuel lines, wiring harnesses and other components that may be a hazard.

### General:

Before fitting this towbar read fitting instructions and check installation hardware is correct.

Check that the towbar is suitable for the vehicle and be wary of any changes to the vehicle design that may conflict with the fitting of this towbar.

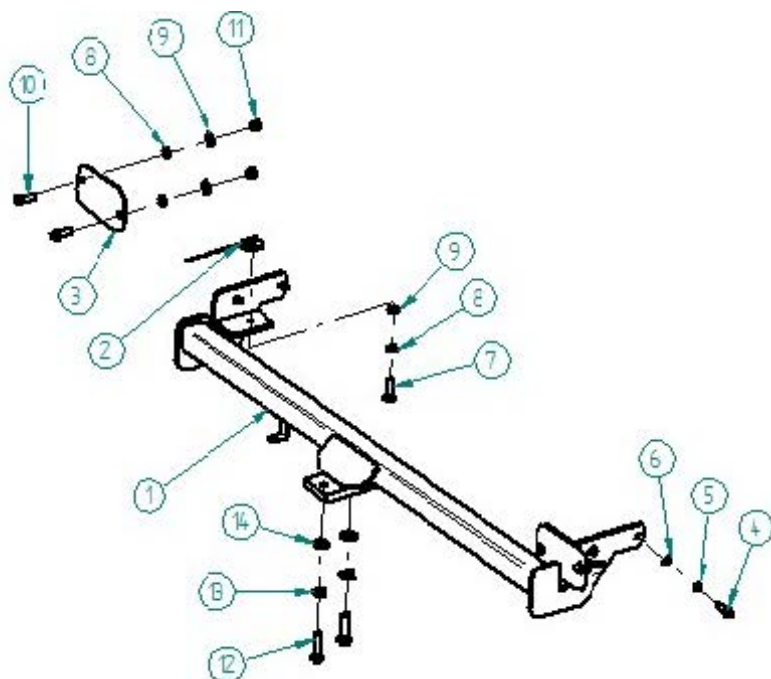
After drilling, blow any filings clear, remove any swarf and treat exposed metal with a rust inhibitor.

If this vehicle requires a bumper cut out, please check to make sure that you measure twice and check twice before cutting any panels as some bumper profiles can change.

If you are not sure then ask your towbar supplier.

Tighten all bolts as specified on the last page.

# Towbar Fitting Instructions

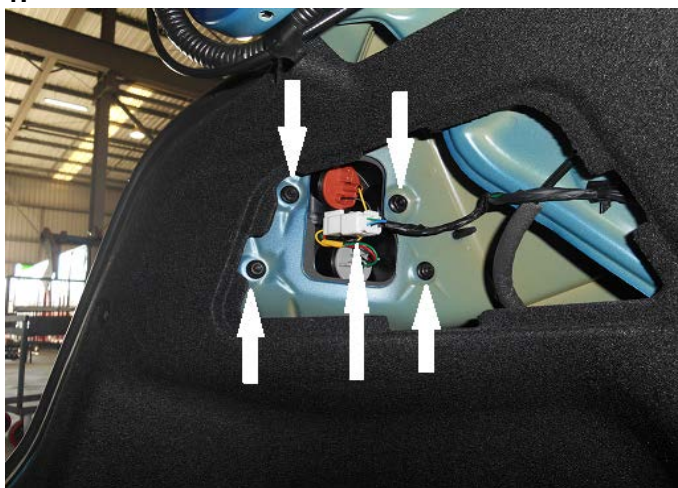


| KIT CONTENTS                  |          |
|-------------------------------|----------|
| Item                          | Quantity |
| 1. Towbar                     | 1        |
| 2. Nut plate                  | 2        |
| 3. Plate                      | 2        |
| 4. M10 x 35 x 1.25 pitch bolt | 4        |
| 5. M10 spring washer          | 4        |
| 6. M10 flat washer            | 4        |
| 7. M12 x 40 x 1.5 pitch bolt  | 2        |
| 8. M12 spring washer          | 6        |
| 9. M12 flat washer            | 6        |
| 10. M12 x 30 x 1.5 pitch bolt | 4        |
| 11. M12 x 1.5 nut             | 4        |
| 12. M16 x 50 bolt             | 2        |
| 13. M16 spring washer         | 2        |
| 14. M16 flat washer           | 2        |
| 15. L269C tongue              | 1        |
| 16. Compliance plate          | 1        |
| 17. Door sticker              | 1        |

# Towbar Fitting Instructions



1.



Pic.1

- 1.1 Remove tail light plug as shown on Pic.1
- 1.2 Remove four tail light nuts as shown on Pic.1
- 1.3 Remove tail lights by pulling them straight out

2.



Pic.2

- 2.1 Remove scriveners from passenger side as shown on Pic.2 (if reversing camera fitted)
- 2.2 Undo reversing camera sensor plug (if reversing camera fitted)

3.



Pic.3

- 3.1 Remove bumper bar scriveners as shown on Pic.3
- 3.2 Remove scriveners from rear passenger and driver side mud guard

# Towbar Fitting Instructions



4.



Pic.4

4.1 Remove the under tray from left rear end as shown on Pic.4

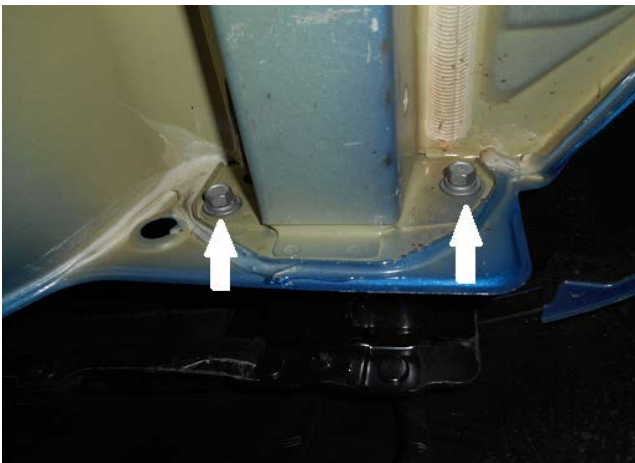
5.



Pic.5

5.1 Remove scrivet and screw as shown on Pic.5 from both side

6.



Pic.6

6.1 Remove impact beam bolts as shown on Pic.6 from both side

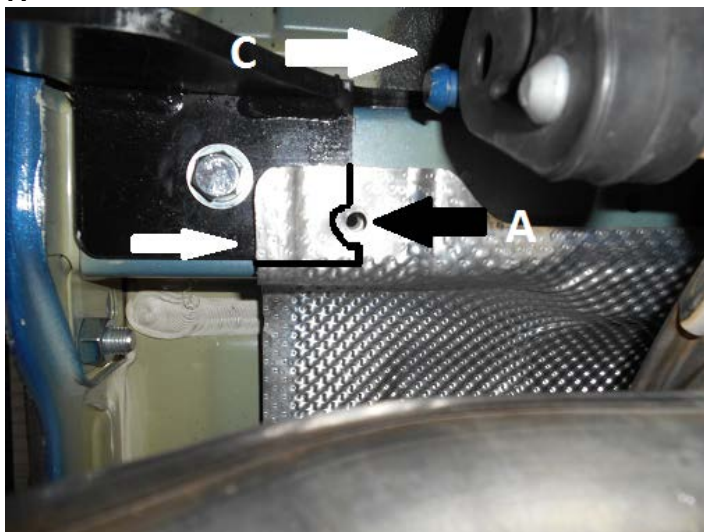
6.2 Remove bumper bar with impact beam, if needed use assistance



# Towbar Fitting Instructions



7.

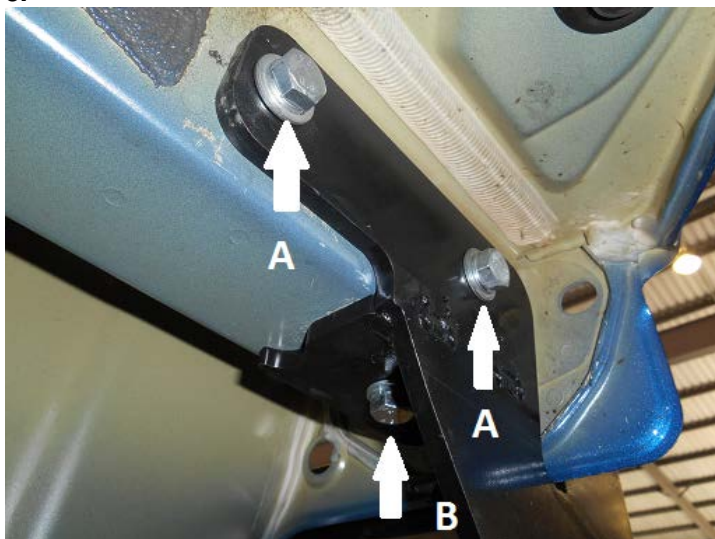


Pic.7

7.1 Remove the exhaust rubber C as shown on Pic.7

7.2 Remove heat guard bolt A as shown on Pic.7

8.



Pic.8

8.1 Lift the towbar up against the chassis rail and insert bolts A as shown on Pic.8 and Scheme 1 and tighten bolts loosely

8.2 Using the towbar as a guide mark the hole for bolt B and drill a hole into the chassis rail (both sides)

# Towbar Fitting Instructions



9.



Pic.9

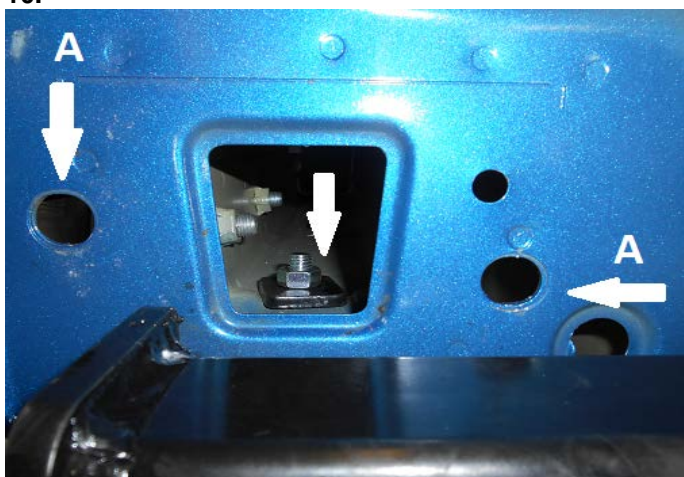
9.1 Mark the heat guard like shown on Pic.9

9.2 Remove heat guard

9.3 Cut the heat guard like shown on Pic.9

9.4 Refit heat guard

10.



Pic.10

10.1 Tighten bolts with the torque wrench.

10.2 Use impact beam bolt holes A as shown on Pic.10 to cover the chassis rail holes with the Plate as shown on Scheme 1 and Pic.10

11.



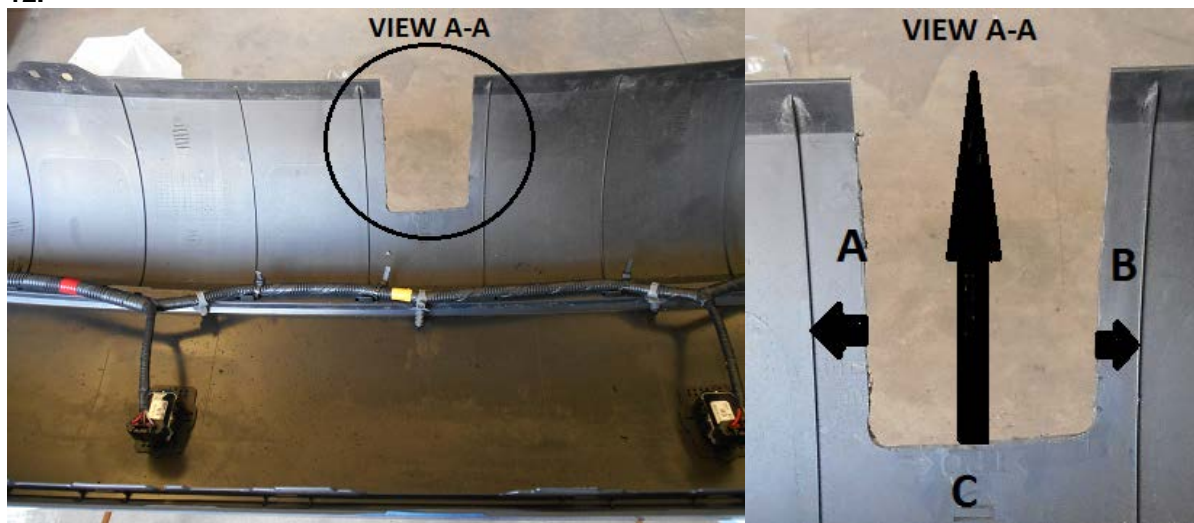
Pic.11

11.1 Remove both impact beam scrivenets as shown on Pic.11 and discard the impact beam

# Towbar Fitting Instructions



12.



Pic.12

12.1 Use zip ties to fasten reversing camera sensor wiring loom to the bumper bar by using upper and lower bumper bar mounting points

12.2 Make a cut out to the bumper with given measurements **A= 20 MM; B=15 MM; C=135 MM**

Measurements are given from inside of the bumper bar and cut out is not in the centre of ribs

13.

13.1 Fit supplied compliance plate to the towbar and door sticker inside of the driver's door pillar.

13.2 Refit the bumper bar, under tray and tail lights in reverse order

13.3 Mount the lug mount to the towbar

## Torque table for bolt tightening

| Metric GRADE 8.8 | UNC GRADE 8  |
|------------------|--------------|
| M6 – 12.5 Nm     | 3/8 – 50 Nm  |
| M8 – 30 Nm       | 1/2 – 125 Nm |
| M10 – 60 Nm      | 5/8 – 245 Nm |
| M12 – 103 Nm     |              |
| M14 – 167 Nm     |              |
| M16 – 270 Nm     |              |



# Towbar Fitting Instructions



## TAG Warranty Statement

SWD warrants your TAG Towbar for its full product life under the following conditions:

- You can show proof of purchase.
- The towbar has been correctly installed by a suitably qualified installer.
- The towbar has not been modified or abused in any way and has only been used for the purpose intended.
- The towbar was not fitted second hand to your vehicle.

The extent of this warranty includes materials and workmanship used in the manufacture of the towbar and is to the equivalent value of current, full replacement cost.

Nothing stated or implied in this warranty limits in any way, the statutory rights that you may have.

To make a claim visit the original installer in the first instance or, if you are unable to or are not satisfied with their help, then contact us direct by phone on 1300 669 122 or visit [www.swd.com.au](http://www.swd.com.au)