

Fitting Instructions



SKU

PRODUCT

T7D693

TAG Heavy Duty Towbar to suit Nissan X-TRAIL (12/2013 - on)



Scan for latest
version of these
instructions

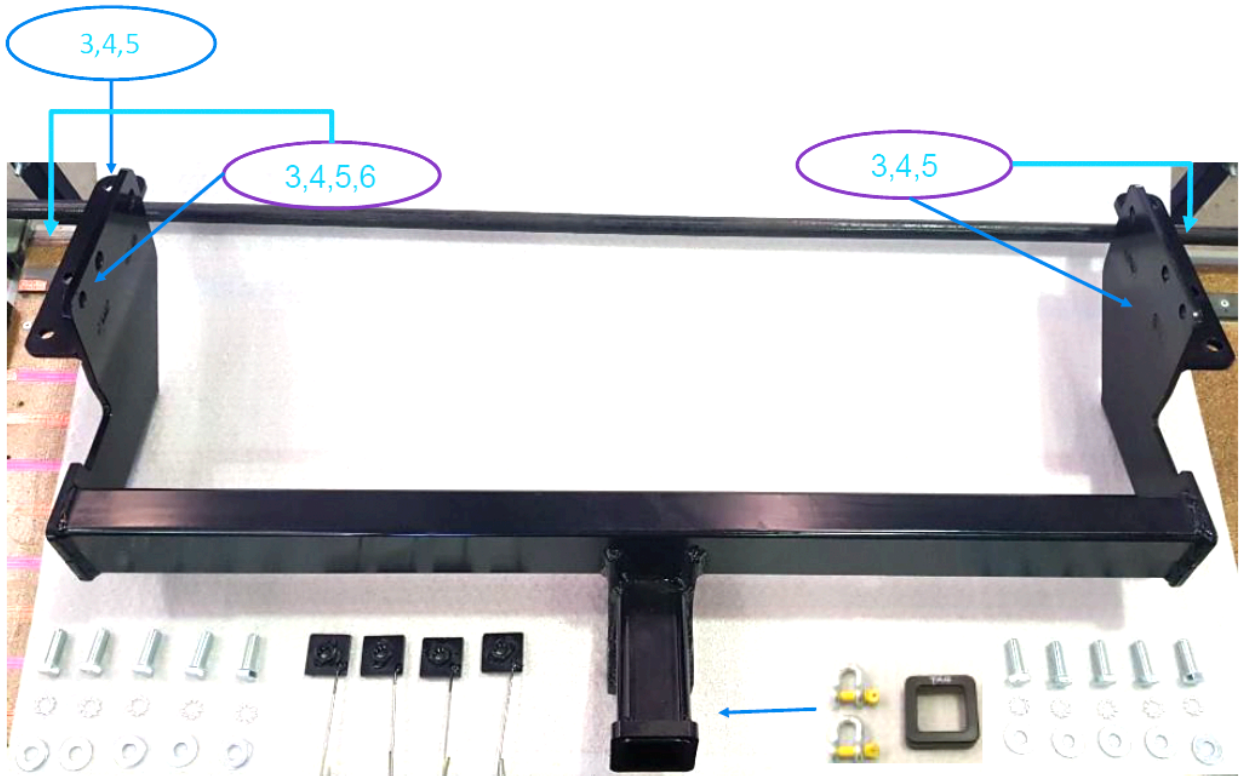
SPECIFICATIONS

- Towbar Class: Standard Duty
- Towing Capacity: 1500kg

IN THIS GUIDE

- Fitment Instructions
- Torque Settings
- Warranty Info

Towbar Fitting Instructions



Tools Required: Spanners, Sockets, Screwdriver, Torque wrench

<i>Item Number</i>	<i>Item</i>	<i>Quantity</i>
1	Towbar – T4D627 / T7D693	1
2	Ball Mount – L4120	1
3	M12 X 1.25 X 35 Bolt	10
4	M12 Shake proof	10
5	M12 Flat Washer	10
6	Top plate with wire & M12 X 1.25 Nut	4
9	Class 4 Pin	1
10	Spare label bag x 1	1

Step-By-Step Instructions

Warning:

- This product is for towing purposes only and must only be loaded as shown in your vehicle Owner's Manual.
- This towbar is NOT to be drilled, cut, welded, or modified in any way.
- Check behind chassis rail and body panels before drilling to ensure no hazards are present
- All load ratings shown are under the assumption your trailer has a functional braking system installed
- When installed in positions other than the one depicted in these instructions the Tow Ball Mount may interfere or obstruct certain features of your vehicle (tailgate opening, Chassis clearance, etc.)

General:

- Before fitting this towbar read fitting instructions and check installation hardware is correct.
- Check that the towbar is suitable for the vehicle and be wary of any changes to the vehicle design that may conflict with the fitting of this towbar. (Tray, Canopy, Suspension etc.)
- After drilling, blow any filings clear, remove any swarf and treat exposed metal with a rust inhibitor.
- The high tensile fasteners supplied with this product are an integral feature to achieving the specified rating, if replacement is required ensure that fasteners of the same grade (8.8) & quality are used. Contact an authorised TAG distributor or the TAG fitment centre - (07) 3208 3022 - if further information is required.

Towbar Maintenance and Care:

It is recommended, when not in use, the Tow Ball Mount assembly and class 4 Pin and Clip is stored inside the car away from moisture to prevent standing water from forming rust. Inspect to ensure, on regular basis, fasteners are torqued to the specifications below and in good condition.

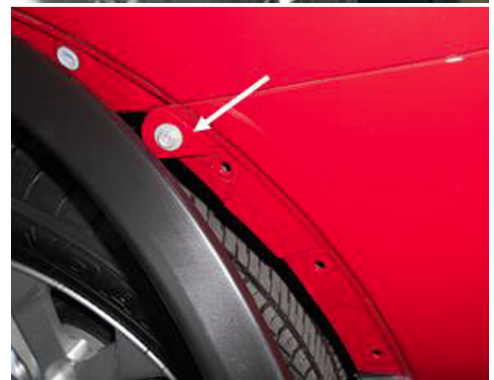
**Ensure that the fitting instructions are read and understood prior to fitment
Place these instructions in the vehicle's glovebox after installation is completed**

Towbar Fitting Instructions



Step 1. Remove Bumper

- a. Remove 3x hex screws from each wheel arch
- b. Remove each plastic wheel arch trim up past the top of the bumper by gently releasing it from the guard to reveal Hex head screw. Remove screws.
- c. Remove plastic scrivenets and screws from behind each mudflap.
- d. Remove plastic scrivenets from rearmost lower edge of bumper.
- e. Lift tail gate and remove 1x screw either side if boot access.
- f. Beginning at each wheel arch, carefully peel bumper away from body and remove from vehicle.
- g. Disconnect any harnesses.
- h. Remove & discard the impact beam.
- i. Remove and discard the tow hook from the chassis.

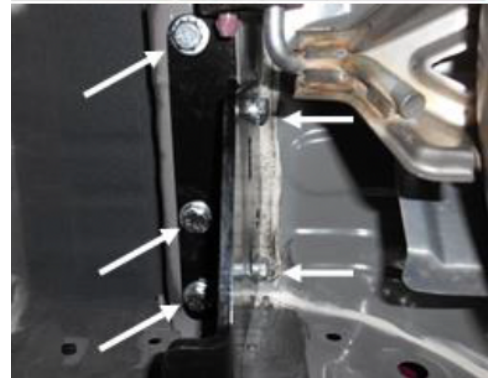
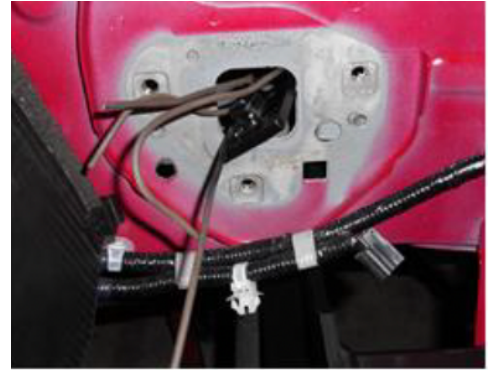


Towbar Fitting Instructions



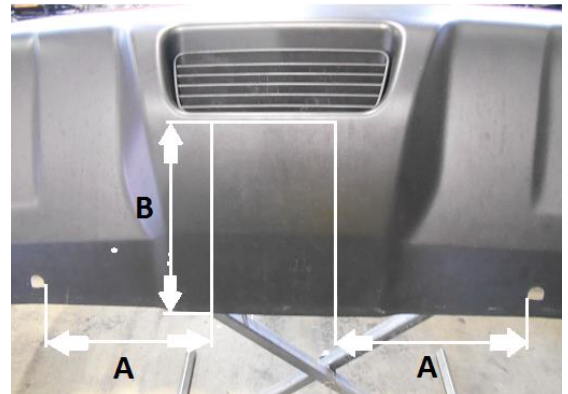
Step 2. Fit Towbar

- Lift towbar up to chassis and align with holes on PS & captive threads on DS.
- Insert M12x35 into DS chassis & secure loosely.
- Insert 4x tapped plates on wire into PS chassis & align with holes. Insert M12x35 bolts and secure loosely.
- Tighten all bolts to the torque specification on table.



Step 3. Cut Bumper

The towbar installer is ultimately responsible for the location & quality of the bumper cut. To avoid mistakes, please use the following measurements as a guide only. We suggest making small incremental cuts and regularly test fit the bumper to ensure an accurate and tidy appearance. The additional application of rubber pinch-weld around the cut edge ensures a neat & tidy look.



- Establish the centreline of the bumper and mark. Measure 45mm either side of centre & 155 high from the bottom edge of the bumper. See picture. (A=145mm, B= 155mm)
- Cut the bumper using an air saw or similar. Deburr all cut edges.
- Refit bumper in reverse of steps 1a-g.
- Attach plastic hitch surround.
- Insert ball mount into receiver and secure with pull pin & clip.

Step 4. Apply Door Sticker

- a. Apply one of the compliance labels to the pillar of the driver's door. Leave the remaining label & the fitting instructions in the vehicle handbook.



Torque table for bolt tightening

Diameter	Pitch	Grade	Torque	Unit
M8	1.25	8.8	29	Nm
M10	1.25	8.8	57	Nm
M10	1.50	8.8	44	Nm
M12	1.25	8.8	101	Nm
M12	1.50	8.8	97	Nm
M12	1.75	8.8	77	Nm
M14	2.00	8.8	122	Nm
M16	2.00	8.8	190	Nm

TAG Warranty Statement

SWD warrants your TAG Towbar for its full product life under the following conditions:

- You can show proof of purchase.
- The towbar has been correctly installed by a suitably qualified installer.
- The towbar has not been modified or abused in any way and has only been used for the purpose intended.
- The towbar was not fitted second hand to your vehicle.

The extent of this warranty includes materials and workmanship used in the manufacture of the towbar and is to the equivalent value of current, full replacement cost.

Nothing stated or implied in this warranty limits in any way, the statutory rights that you may have.

To make a claim visit the original installer in the first instance or, if you are unable to or are not satisfied with their help, then contact us direct by phone on 1300 669122 or visit www.swd.com.au