

Fitting Instructions



SKU

PRODUCT

T4P568

**TAG Heavy Duty Towbar to
suit Jeep Grand Cherokee
(11/2010 - on**



Scan for latest
version of these
instructions

SPECIFICATIONS

- Towbar Class: Heavy Duty
- Towing Capacity: 3500kg

IN THIS GUIDE

- Fitment Instructions
- Torque Settings
- Warranty Info

Step-By-Step Instructions

Warning:

Safety First: Always use correct safety equipment.

This towbar is NOT to be drilled, cut, welded or modified in any way.

Check the surrounding area before drilling into chassis or body panels for fuel lines, wiring harnesses and other components that may be a hazard.

General:

Before fitting this towbar read fitting instructions and check installation hardware is correct.

Check that the towbar is suitable for the vehicle and be wary of any changes to the vehicle design that may conflict with the fitting of this towbar.

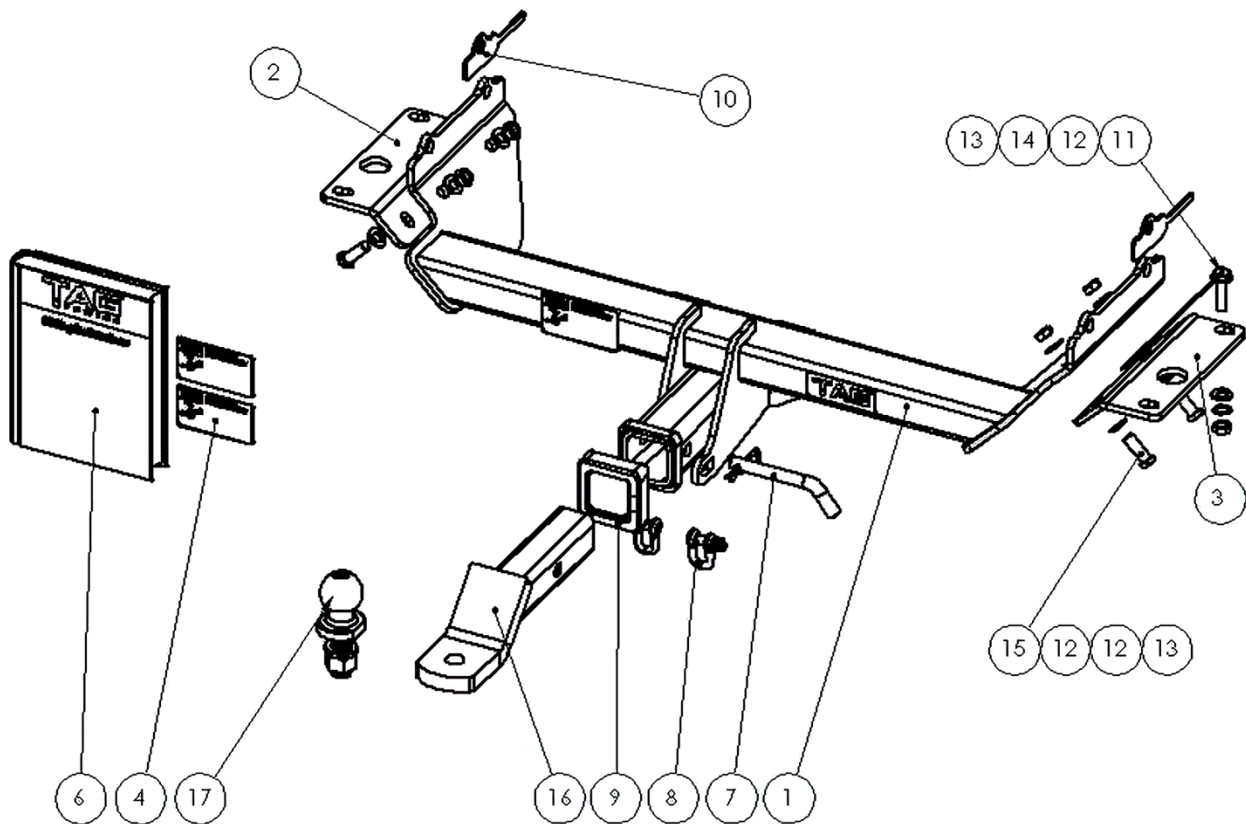
After drilling, blow any filings clear, remove any swarf and treat exposed metal with a rust inhibitor.

If this vehicle requires a bumper cut out, please check to make sure that you measure twice and check twice before cutting any panels as some bumper profiles can change.

If you are not sure then ask your towbar supplier.

Tighten all bolts as specified on the last page.

Towbar Fitting Instructions



Tools Required: Spanners, Screwdriver, Sockets, Torque wrench

ITEM NO.	DESCRIPTION	QTY.	ITEM NO.	DESCRIPTION	QTY.
1	Welded Assembly for T4P568	1	10	Chassis Spacer	2
2	Chassis Base Plate	1	11	M12x 1.25x 45 Bolt on 250mm Wire	1
3	Chassis Base Plate DS	1	12	M12 Flat Washer	9
4	TAG Compliance Sticker	3	13	M12x1.25 Nut	5
5	TAG STICKER - 100 X 40	1	14	M12 Shakeproof Washer	1
6	Fitting Instruction	1	15	M12x 1.25x 35 Bolt	4
7	Class 4 Pin & Clip	1	16	L4045 Ball Mount	1
8	D-Shackle - 10mm. 1000kg	2	17	50mm TAG Tow Ball with Flat edge	1
9	Cover Hitch Receiver Collar TAG	1			

Step-By-Step Instructions

Warning:

- This product is for towing purposes only and must only be loaded as shown in your vehicle Owner's Manual.
- This towbar is NOT to be drilled, cut, welded, or modified in any way.
- Check behind chassis rail and body panels before drilling to ensure no hazards are present
- All load ratings shown are under the assumption your trailer has a functional braking system installed
- When installed in positions other than the one depicted in these instructions the Tow Ball Mount may interfere or obstruct certain features of your vehicle (tailgate opening, Chassis clearance, etc.)

General:

- Before fitting this towbar read fitting instructions and check installation hardware is correct.
- Check that the towbar is suitable for the vehicle and be wary of any changes to the vehicle design that may conflict with the fitting of this towbar. (Tray, Canopy, Suspension etc.)
- After drilling, blow any filings clear, remove any swarf and treat exposed metal with a rust inhibitor.
- The high tensile fasteners supplied with this product are an integral feature to achieving the specified rating, if replacement is required ensure that fasteners of the same grade (8.8) & quality are used. Contact an authorised TAG distributor or the TAG fitment centre - (07) 3208 3022 - if further information is required.

Towbar Maintenance and Care:

It is recommended, when not in use, the Tow Ball Mount assembly and class 4 Pin and Clip is stored inside the car away from moisture to prevent standing water from forming rust. Inspect to ensure, on regular basis, fasteners are torqued to the specifications below and in good condition.

**Ensure that the fitting instructions are read and understood prior to fitment
Place these instructions in the vehicle's glovebox after installation is completed**

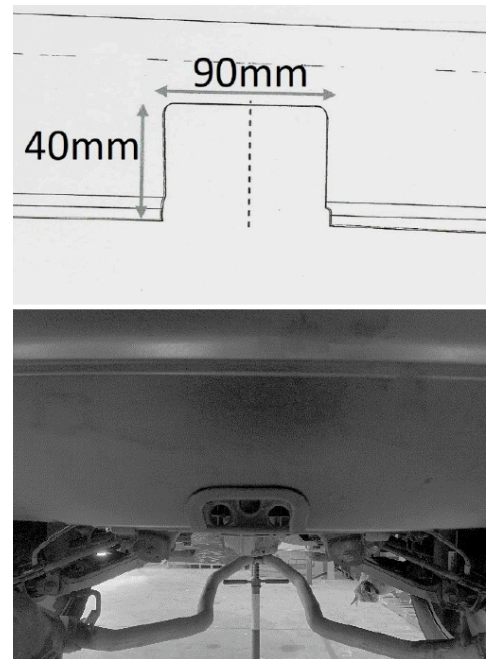
Step 1. Drop Exhaust & Remove Shipping Hook

- a. Support the centre of the exhaust near the differential.
- b. Disconnect the 2 rearmost exhaust hangers on each side of the vehicles and allow the rear section of the exhaust to hang lower, giving space to access towbar mounting points.
- c. Remove the shipping hook from the passenger side of the vehicle as well as the corresponding bolts on the other side. Retain all bolts to use for fitting the towbar end plates in the next step. Shipping hook can be discarded.

Step 2. Cut Bumper

The towbar installer is ultimately responsible for the location & quality of the bumper cut. To avoid mistakes, please use the following measurements as a guide only. We suggest making small incremental cuts and regularly test fit the bumper to ensure an accurate and tidy appearance. The additional application of rubber pinch-weld around the cut edge ensures a neat & tidy look.

- a. Establish the centreline of the bumper and mark using measurements.
- b. Cut the bumper with an air saw or similar.



Step 3. Fit Towbar

- a. Loosely fasten the chassis base plates to the outside face of the towbar end plates with 2x M12x 1.25x 35 Bolt flat washers & nuts per side.
- b. Lift bar up to chassis and insert OEM bolts to mount towbar to the inside of the chassis rails (2x per side). Insert the small 3mm chassis spacers between the inner face of each chassis rail & the vertical face of the end plate.

Towbar Fitting Instructions



- c. Align holes of loose chassis base plates to existing holes in chassis and insert the remaining 3x OEM bolts.
- d. Drill the remaining front-most hole in the bottom of the driver's side chassis rail. Feed the M12 bolt on wire, up through the hole in the chassis, to align with the drilled hole. Fasten loosely with M12 nut, flat and shake proof washers.
- e. Tighten the bolts to torque spec (back page).

Step 4. Apply Compliance Label

- a. Apply one of the compliance labels to the pillar of the driver's door. Leave the remaining label and the fitting instructions in the vehicle handbook



Torque table for bolt tightening

Diameter	Pitch	Grade	Torque	Unit
M8	1.25	8.8	29	Nm
M10	1.25	8.8	57	Nm
M10	1.50	8.8	44	Nm
M12	1.25	8.8	101	Nm
M12	1.50	8.8	97	Nm
M12	1.75	8.8	77	Nm
M14	2.00	8.8	122	Nm
M16	2.00	8.8	190	Nm
Imperial Bolt Torque Settings				
3/8"	UNC	8	44.75	Nm
1/2"	UNC	8	108.5	Nm

TAG Warranty Statement

SWD warrants your TAG Towbar for its full product life under the following conditions:

- You can show proof of purchase.
- The towbar has been correctly installed by a suitably qualified installer.
- The towbar has not been modified or abused in any way and has only been used for the purpose intended.
- The towbar was not fitted second hand to your vehicle.

The extent of this warranty includes materials and workmanship used in the manufacture of the towbar and is to the equivalent value of current, full replacement cost.

Nothing stated or implied in this warranty limits in any way, the statutory rights that you may have.

To make a claim visit the original installer in the first instance or, if you are unable to or are not satisfied with their help, then contact us direct by phone on 1300 669122 or visit www.swd.com.au